

**Country Profile on
Disability**

PEOPLE'S REPUBLIC OF CHINA

**March 2002
Japan International Cooperation Agency
Planning and Evaluation Department**

Country Profile on Disabilities

People's Republic of China

Table of Contents

Figures	ii
Table.....	ii
Abbreviations.....	iii
1. Basic Profile.....	1
1-1. Basic Indicators	1
1-2. Indicators on Disability	3
2. Issues on Disability.....	6
2-1. Definition of Disability in China.....	6
2-2. Current Situation.....	6
2-3. Documentation and Survey on Disability.....	7
3. Administration and Policy on Disability.....	8
3-1. Administration on Disability	8
3-2. Laws and Regulations on Disability.....	11
3-3. Policies on Disability.....	12
3-4. Measures on Disability	14
3-5. Experts and Workers in the Field of Disability.....	29
4. Disability-related Organizations and Activities	31
4-1. Activities by Disability-related Organizations.....	31
4-3. Cooperation Projects on Disability Organized by International Donors and Others	32
5. References.....	34

Figures

Figure 1: Types of Disability out of total 60 million Persons with Disabilities.....	3
Figure 2: Number of Each Type of Disability Aged Between 0-14 (Total 9 million Children with Disabilities).....	3
Figure 3: Percentage of Intellectual Disability (Total 11.82 million) Caused by Heredity	5

Table

Table 1: Number of Persons with Disabilities by Provinces	4
Table 2: Women with Disabilities in China.....	5
Table 3: Number of Children with Disabilities Students.....	7

Abbreviations

CPPCC	Chinese People’s Political Consultative Conference
CBR	Community-based Rehabilitation
CWDs	Children with disabilities
ESCAP	Economic and Social Commission for Asia and the Pacific
GGP	Grant Assistance for Grassroots Projects
JICA	Japan International Cooperation Agency
NGO	Non-governmental Organization
NPC	National People’s Congress
OT	Occupational Therapist
PT	Physiotherapist
PWDs	Persons with disabilities
UNDP	United Nations Development Programme
UNICEF	United Nations Children’s Fund
UNESCO	United Nations Educational, Scientific and Cultural Organization
USAID	United States Agency for International Development
WHO	World Health Organization

1. Basic Profile

1-1. Basic Indicators

Public Sector Expenditure¹

Health	2.0%	1996-98
Education	2.3%	1997
Social welfare	2.5%	1998
Defense	2.2%	1997

Population¹

Population (total)	1.3 billion	2000
% of women	48.4%	2000
% of urban population	32%	1999
Life Expectancy ² (total)	70.2	1999
Male	68.3	1999
Female	72.5	1999

Medical Care

Medical care personnel ²		
Population/Doctor	617	1990-99
Population/Nurse & midwife	1,136	1992-95

¹ World Bank. World Development Report 2000-2001

² UNDP. Human Development Report 2001

Education

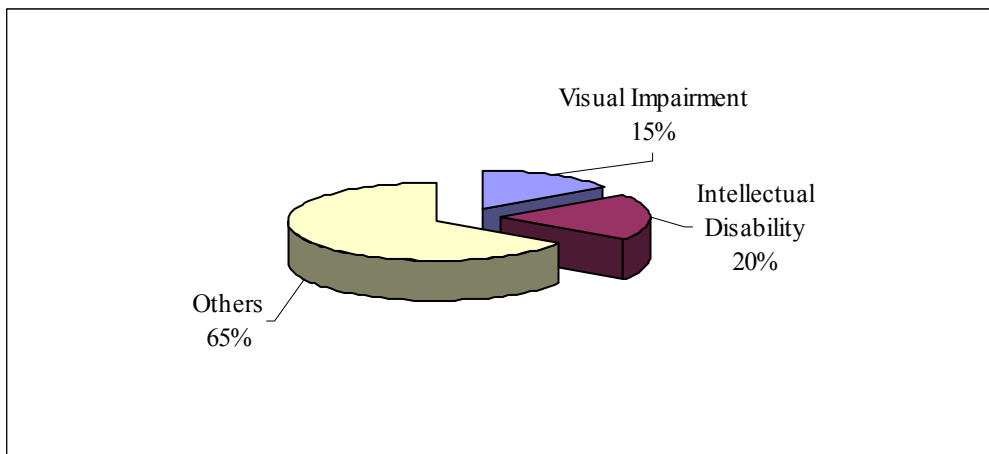
Education system ³		
Primary education	5 year	
Compulsory education	9 year	
Adult literacy rate ¹		
Male	91%	1998
Female	75%	1998
Enrollment ratio ³		
Primary education (Net enrollment ratio)		
Total	100%	1997
Male	99%	1995-99
Female	99%	1995-99
Primary education ⁴ (Gross enrollment ratio)		
Total	123%	1997
Male	122%	1997
Female	123%	1997
Secondary education (Net enrollment ratio)		
Total	70%	1997
Male	100%	1996
Female	100%	1996
Higher education (Gross enrollment ratio)		
Total	5.6%	1996
Male	7.3%	1996
Female	3.9%	1996

³ UNESCO. Statistical Yearbook 1999⁴ USAID ESDS. GED2000 Retrieved February 21, 2002, from <http://quesdb.cdie.org/ged/index.html>

1-2. Indicators on Disability

Disability-specific Data

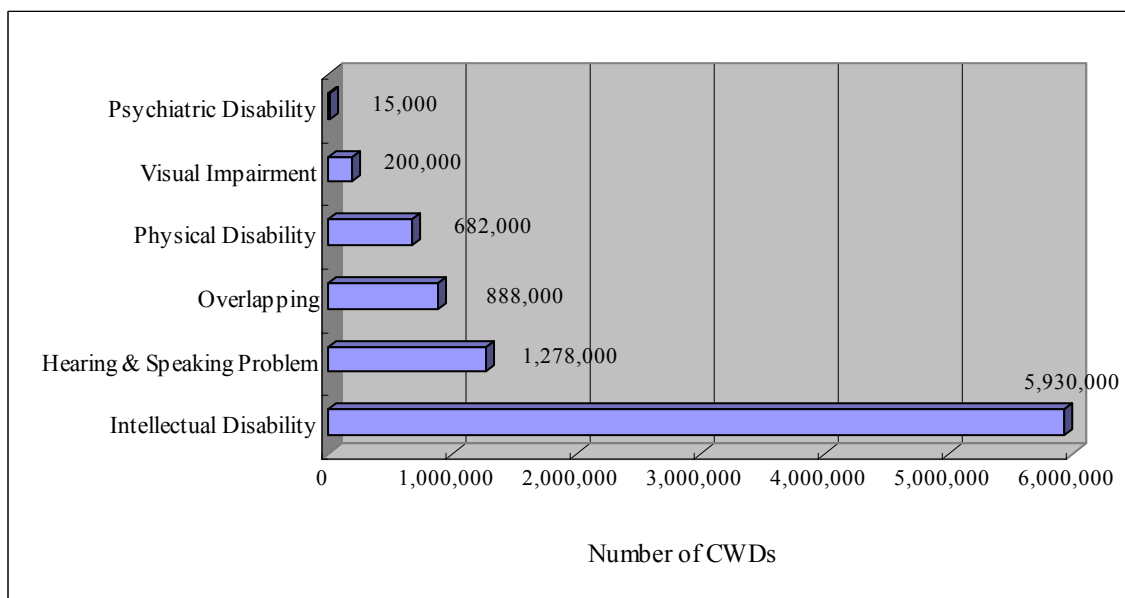
Figure 1: Types of Disability out of total 60 million Persons with Disabilities



Source: State Council, Coordination Committee for PWD (1996), *The Ninth 5-year Development Plan for PWD projects*.

Age-specific Data

Figure 2: Number of Each Type of Disability Aged Between 0-14 (Total 9 million Children with Disabilities)



Source: JICA (2001), *Country Profile on People with Disability in China*.

Area-specific Data

Table 1: Number of Persons with Disabilities by Provinces

Area	Provinces	Population (thousand)	Ratio of Persons with Disabilit ies (%)	Number of Persons with Disabilities (thousand)
North	Beijing	12,570	4.5	566
	Tianjing	9,590	4.2	403
	Hebei	66,140	5.2	3,439
	Shanxi	32,040	4.4	141
	Neimenggu	23,620	4.0	945
East west	Liaoning	41,710	4.0	166.8
	Jilin	26,580	5.7	1,515
	Heilongjiang	37,920	3.5	1,327
East	Shanghai	14,740	4.0	590
	Jiangsu	72,130	4.8	3,462
	Zhejiang	44,750	4.7	2,103
	Anhui	62,370	4.6	2,869
	Fujian	33,160	4.7	1,559
	Jiangxi	42,310	4.5	1,904
	Shandong	88,830	4.4	3,909
Mid south	Henan	93,870	5.7	5,351
	Hubei	59,380	6.4	380
	Hunan	65,320	4.8	3,135
	Guangdong	72,700	4.0	2,908
	Guangxi	47,130	5.5	2,592
	Hainan	7,620	3.9	297
West south	Chongqing	30,750	5.4	1,661
	Sichuan	85,500	5.4	4,617
	Guizhou	37,100	4.5	167
	Yunnan	41,920	6.3	2,641
	Tibet	2,560	7.2	184
West north	Shaanxi	36,180	5.0	1,809
	Guansu	25,430	5.1	1,297
	Qinghai	5,100	4.3	219
	Ningxia	5,430	3.4	185
	Xinjiang	17,740	3.8	674
Total		1,259,090	4.8	60,709

Source : Child Disabled Persons' Federation, Ministry of Civil Affairs

According to the surveys of China Disabled Persons' Federation and Ministry of Civil

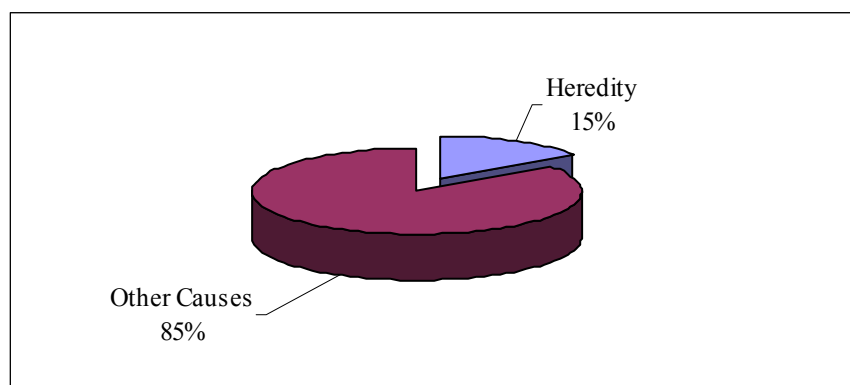
Affairs in 1987,1993, and experts' estimations, the number of persons with of disabilities such as Visual Impairment, Hearing and Speaking Problem , Intellectual and psychiatric disabilities, Overlapping, Physical disability in China are the above.

Grade-specific Data

N/A

Cause-specific Data

Figure 3: Percentage of Intellectual Disability (Total 11.82 million) Caused by Heredity



Source: State Council, Coordination Committee for PWD (1996), *The Ninth 5-year Development Plan for PWD projects*.

Gender-specific Data

Table 2: Women with Disabilities in China

Types of Disability	Number of Women with Disabilities (thousand)	Ratio of Total (%)	Ratio of Persons with Disabilities by Gender (Women : Total)
Visual Impairment	5,520	18.2	62.16%
Hearing and Speaking Problem	9,970	32.8	47.91%
Intellectual Disability	5,710	18.8	47.78%
Physical Disability	3,600	11.9	40.59%
Psychiatric Disability	1,270	4.2	55.46%
Overlapping	4,270	14.1	53.98%
Total	30,340	100	49.97%

Source: China Disabled Persons' Federation (1999)

2. Issues on Disability

2-1. Definition of Disability in China

In China, a person with disability is defined as “a person who has lost all or part of his/her ability to perform normal activities due to loss or impairment of psychological or physiological functions.”

Disability is categorized according to type and level of disability, as follows⁵:

1. Visual Impairment: Depending on the level of the disability, further divided into blindness or low vision.
 - a Blindness: There are 2 levels of blindness. Level 1 means corrected eyesight is less than 0.02, and the inability to sense light, or the peripheral vision is less than 5 degrees. Level 2 indicates the corrected eyesight is from 0.02 to 0.05, and the peripheral vision is less than 10 degrees.
 - b Low vision: There are 2 levels of low vision. Eyesight measuring 0.05 to 0.1 is level 1, and 0.3 to 0.1 for level 2.
2. Hearing and speaking impairment: Further categorized into deafness and hard-of-hearing, depending on listening ability.
 - a Deafness: There are 2 levels of deafness. Level 1 audibility points to more than 91 decibels, with level 2 from 71 to 90 decibels.
 - b Hard-of-hearing: There are 2 levels of hard-of-hearing. The audibility of 56 to 70 decibels is categorized as level 1, and level 2 for audibility of 41 to 55 decibels.
3. Physical disability: Categorized into 4 levels depending on the degree of amputation, paralysis, or functional disorder.
4. Intellectual disability: No information obtained on this category.
5. Psychiatric disability: No information obtained on this category.

2-2. Current Situation

It is estimated that there are more than 60 million persons with disabilities suffering after-effects from increasing industrial and traffic accidents that occur daily. Although 70% of these victims are guaranteed a basic standard of living, approximately 18 million persons with disabilities live without any guarantee. Three hundred thousand of those live in urban areas

⁵ Kexue jishu Wenxian Chubanshe *Xiandai Kangfu yixue (Current Medical Treatment)*

and 2.73 million in rural areas, for a total of 3.04 million living under severe conditions.⁶ Moreover, the number of children with disabilities aged 0 to 14 is estimated to be approximately 9 million, which is equivalent to 2.66 % of the total population of this age group. The number of children with disabilities includes 200,000 visually disabled, 1.278 million people with hearing and speaking impairments, 5.93 million intellectually-disabled, 682,000 physically-disabled, 15,000 psychiatrically-disabled, and 888,000 persons with multiple disabilities. Eighty percent of children with disabilities live in rural areas under impoverished conditions.

2-3. Documentation and Survey on Disability

National Census

A national census has been conducted since 1949, including 1953, 1964, 1982, 1990 and 2000. It is not known if they contain statistics on persons with disabilities, because of the unavailability of census data.

⁶ State Council, Coordination Committee for PWD (1996). *The Ninth 5-year Development Plan for PWD projects*. (in Chinese)

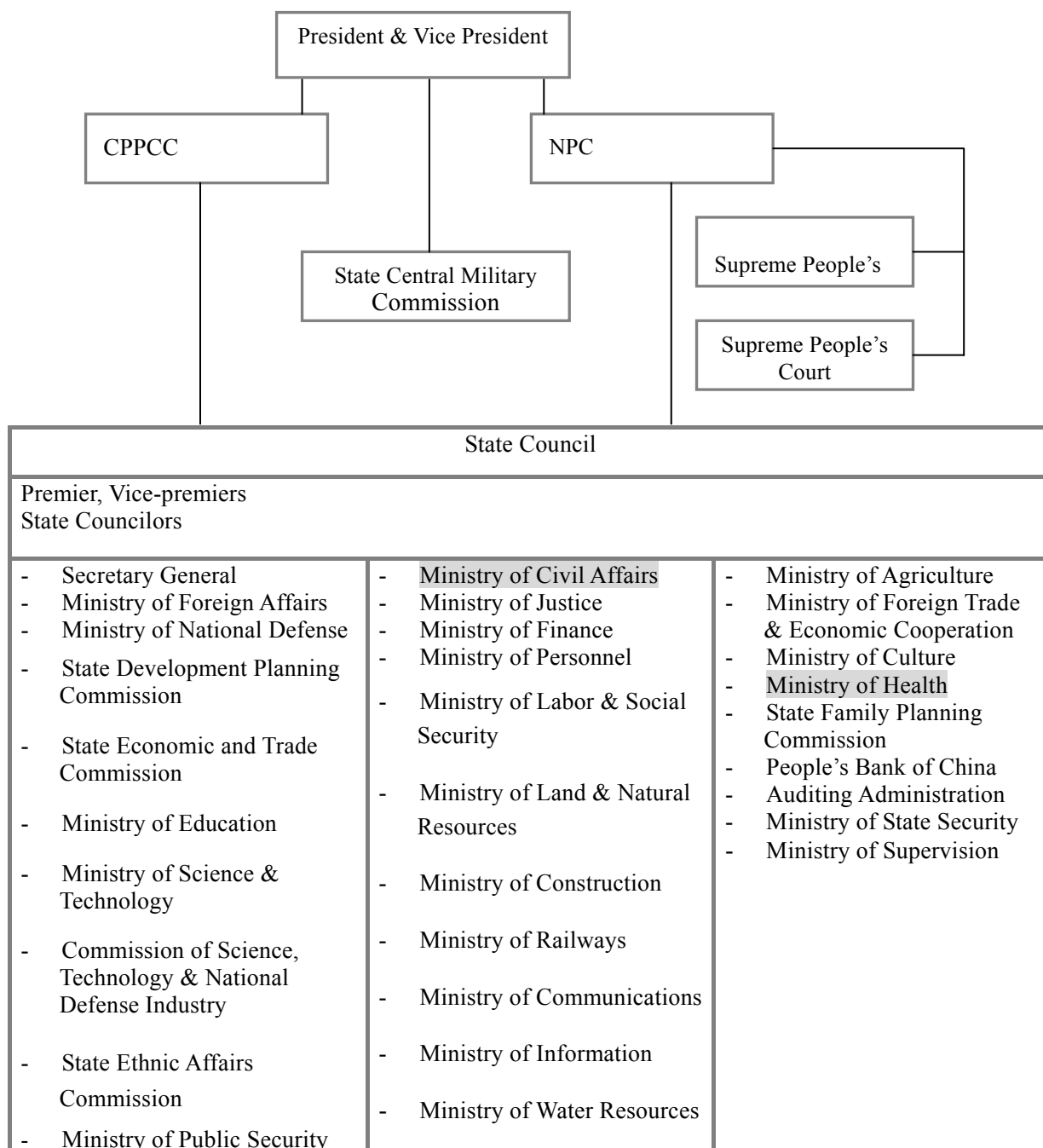
3. Administration and Policy on Disability

3-1. Administration on Disability

* See Annex 1 for a list of governmental organizations

Central Government

【Organizational chart】



The Ministry of Civil Affairs and Ministry of Health (both highlighted in the figure above) are

responsible for persons with disabilities welfare, but the China Disabled Persons' Federation is in charge of social welfare services for persons with disabilities. The Ministry of Education manages rehabilitative medical education.

【Disability-related Central Governmental Organizations】

【Name】	【Description】
Ministry of Health	Establishes and implements policy and regulations for persons with disabilities. *see below for more details
Ministry of Civil Affairs	Controls welfare services for the elderly, orphans, and persons with disabilities. Main tasks include social security, registration of social organizations and the manufacture of assistive devices etc. ⁷
China Disabled Persons' Federation	Established in 1988. Apart from rehabilitation administration, it manages welfare services for persons with disabilities. Each province/autonomous region/municipality, city, prefecture, or town has local organizations. Primary activities include: comprehensive studies and information analyses of persons with disabilities projects, policy recommendations, drafting of policies and regulations, research on the current situation of persons with disabilities, development and sales of disability-related products, academic interchanges, the training of rehabilitative personnel, formulation of education and employment plans for persons with disabilities, and cultural/sports/art activities.
Ministry of Education	Rehabilitative medical education
National Coordination Committee of Disability	Established in 1993. Consists of 32 (34 according to ESCAP) representatives from each Ministry and executives of the China Disabled Persons' Federation. Tasks include policy-making, theory formation and the drafting, implementation and coordination of laws.

*Ministry of Health

According to the State Council's "*Regulations for the function, internal structure and staff allocation of the Ministry of Health*," there are 225 administration officers and 10 departments (bureaus) with the following duties. In addition, the Ministry operates 11 medical colleges, a large number of research institutes, such as the Chinese Academy of Medical Sciences and the Chinese Academy of Preventive Medicine, as well as hospitals such as the Beijing Hospital, China-Japan Friendship Hospital, and others.⁸

⁷ "*Gendai Chugoku Jiten*" Iwanami Shoten ("Modern Chinese Dictionary" Iwanami Books)

⁸ *Ibid.*

【Internal Departments of the Ministry of Health】

Department of General Office	Studies and forms comprehensive policies. Manages financial affairs, administration, public information, and statistics.
Department of Personnel Resources	Plans human resource development, formulates organizational flow in health organizations and allocates salaries and welfare for health-related personnel.
Department of Planning and Financial	Studies development plans of health projects, and supervises community health activities. Sets regulations on financial management.
Department of Health Laws and Supervision	Formulates laws, regulations and technical standards. Supervises contagious disease control, foods, employment, working conditions and school health. Establishes quality and certification standards for foods and cosmetics.
Department of Primary Health and Maternal and Child Health	Reviews rural health service development plans and improves urban health service systems.
Department of Medicine	Reviews reforms of medical organizations, and establishes development plans and administrative regulations for these organizations. Sets service and qualification standards for medical personnel.
Department of Disease Prevention (National Committee of Health Activities, General Office)	Establishes preventive regulations and measures for contagious, endemic and chronic diseases.
Department of Scientific Education	Reviews national priorities in choosing medical technologies and education plans and establishes priority areas. Formulates policies and measures on basic research, priority disease research, and the application of research.
Department of International Coordination	Guides domestic or international exchanges in the fields of medical health.
Department of Health	Responsible for medical health activities formulated by the Central Health Committee.
Department of Social Welfare and Social Affairs	Formulates and implements social welfare policy and regulations, targeting the elderly, persons with disabilities, orphans, and those who are insured by “the 5 support system” (which guarantees clothing, food, shelter, medical treatment and funerals for those without family or those unable to work).

【Availability of national coordination committee】	Available
【Committee name】	National Coordination Committee on Persons with Disabilities (established in 1993)
【Plan and implemented activities】	Law-making, rehabilitation, education, vocational training and employment, information, accessibility of facilities, prevention of disability, and international regional cooperation activities.

Local Government

【Organizational chart】

N/A

【Disability-related Local Governmental Organizations】

N/A

3-2. Laws and Regulations on Disability

* See Annex 3. for other laws

【Title】	China Persons with Disabilities Security Law
【Year legislated】	1991
【Description】	Regulations on rehabilitation, education, employment, welfare, the environment and persons with disabilities responsibility.

【Title】	Rehabilitative Medical Education Plan
【Year legislated】	1992
【Description】	Regulations on training and education of rehabilitation doctors and therapists, physiotherapists and occupational therapists.

【Title】	Persons with Disabilities Education Act
【Year legislated】	1994
【Description】	Ensures the rights of persons with disabilities to education and aims to develop persons with disabilities-related educational projects. Regulations on pre-school, formal, occupational, and adult education. Also, the regulation of teachers.

【Title】	Provisional Regulations of the Qualification System for Prosthetists and Orthotists
【Year legislated】	1997

<p>【Description】 Aims to improve the production of artificial limbs, assistive devices, wheelchairs and canes. Aims to standardize production.</p>

【Title】	Regulations Related to the Control of Rehabilitation Services in General Hospitals
【Year legislated】	1997
<p>【Description】 Obliges large general hospitals to set up rehabilitation units and makes arrangements for physiotherapists and occupational therapists.</p>	

【Title】	Provisional Regulations for the Testing of Medical Doctors
【Year legislated】	1999
<p>【Description】 Regulation of exam administration and application procedures; practical and written skills for the testing and certifying of medical doctors.</p>	

【Title】	Provisional Regulations for the Registration of Medical Doctors
【Year legislated】	1999
<p>【Description】 Regulates procedures for registration, cancellation and change of information for medical doctors.</p>	

【Title】	Provisionary Regulations for the Faculty of Clinical Medical Schools
【Year legislated】	N/A
<p>【Description】 Institution regulations cover the following:</p> <ul style="list-style-type: none"> - The number of beds (must have more than 150) - Qualifications (95% of doctors must be graduates of regular or technical medical schools, and 20% must be professors or assistant professors) - Clinical education facilities, including educational consulting rooms, classrooms, laboratories, model workshops, practice rooms, rooms for duty students, student residences, canteens and so on. - Audio-visual aids, such as video cameras, slide projectors, projectors, cable TV systems, computers and software. - Teachers - Educational administration unit. 	

3-3. Policies on Disability

National Development Plan**1. Person with Disabilities Projects in China, “The 10th Five-year Plan”**

National policies, objectives and strategies on persons with disabilities projects are revised every 5 years. Priority issues in the latest Five-year Plan are the improvement the quality of life of persons with disabilities, rehabilitation, formal education, employment and construction of regional facilities.

2. Poverty Program for Persons with Disabilities in Rural Areas

80% of persons with disabilities live in rural areas, half of which live in impoverished conditions. Although poverty alleviation was one of the objectives of the 9th Five-year Plan, it has once again been named as a priority in the 10th Plan. In persons with disabilities-related activities, poverty alleviation must be considered in all areas, with activities designed to improve the quality of life for poor persons with disabilities. Poverty alleviation in the western region should be considered when making policy and allocating the budget.

【Title】	Persons with disabilities Projects in China, “The 9 th Five-year Plan” Outline and Implementation Plan
【Period】	1996-2000
【Items on Disability】	Persons with disabilities projects required not only for adjustment to the socialist market economy system, but also for poverty eradication and improvement of the quality of life. Projects must also aim to narrow economic disparities and solve physical and mental barriers to the social participation of Persons with disabilities.

【Title】	Persons with disabilities Projects in China, “The 10 th Five-year Plan” Outline
【Period】	2001-2005

【Items on Disability】

Strengthening of Persons with disabilities projects, support for rehabilitation, school entrance and employment support, as well as preparation for social participation. Objectives during the period are as follows:

1. To achieve economic security for persons with disabilities in economical developed areas. In developing areas, people shall achieve basic subsistence.
2. To deliver rehabilitation services to 5.1 million people.
3. To improve enrollment ratio of formal education.
4. To provide employment and training to the unemployed and to achieve an employment rate of 85%.
5. To extend the construction of facilities for persons with disabilities to cities and municipalities.