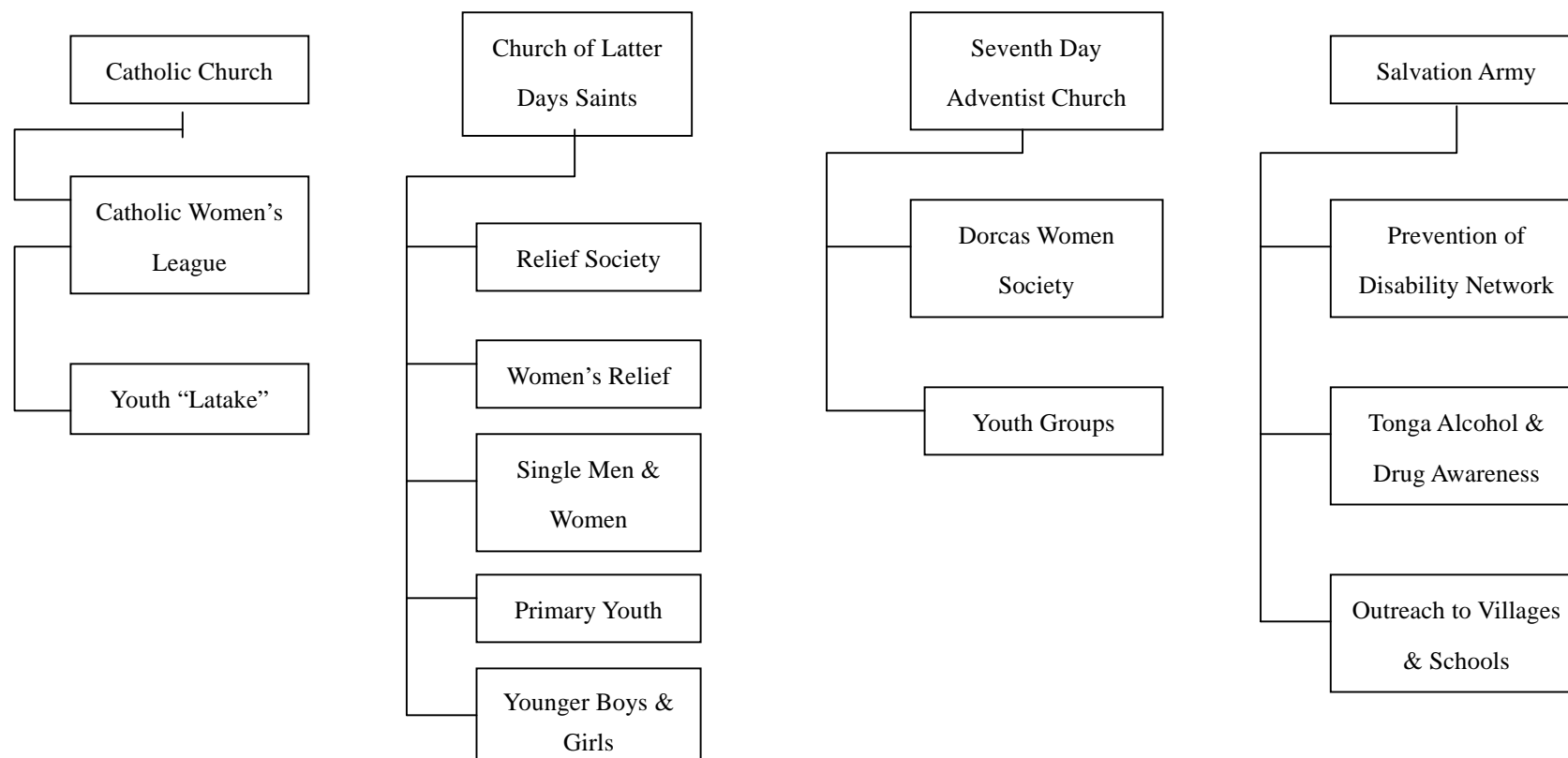


## Annex 1. Lists of Disability-related Organizations

### 1-1. Community Level Disability-related Services<sup>1</sup>



<sup>1</sup> There is no service or resource coordination between community groups.

### 1-2. List of Disability-related Educational Facilities

Name	Target		Capacity	Number of Students	Contact Address
	Education Grade	Classrooms			
OFA Tui Amanaki Centre (OTA)	Kindergarten Primary School Secondary School Outreach Programme	4	Physical Visual Intellectual Others	35 2 38 16	Ms Pale Fifita OTA Centre Nuku'alofa, Tonga Ph: (676) 21950
Petesaita/Alonga Disabled Centre for Adults	Handicraft Package Computer Farming Outreach	4	Physical Visual Intellectual Psychiatric	44 7 32 2	Ms Lavenia Satini Alonga Centre Nuku'alofa, Tonga Ph: (676) 29180
Red Cross Hearing Impaired Group	Primary	2	Hearing	5	Ms Solonga Nuku'alofa, Tonga Ph: (676) 21610
Government Psychiatric Group	All Ages	4	Mental	133	Dr Mape Puloka Vaiola Hospital Nuku'alofa, Tonga

*Note: Some services, under the auspices of the Tonga Red Cross and OTA are provided in the outer islands of Vava'u, Haapai, E'ua and Niua.*

1-3. List of Disability-related Organizations

No.	Name	Contact	Budget (TD\$) <sup>2</sup>	Description of Activity														
				Type of org.			Type of activity				Field of activity					Other comments		
				Organization of PWDs	Organization for PWDs	International Organization	Program Implementation	Advocacy	Financial Support	Others	Rehabilitation			Supportive Devices	Communication Tools		Sport & culture	Others
							Medical	Educational	Vocational	Social	CBR							
1	Tonga Red Cross Society	Sione Taumoefolau P O Box 456. Nuku'alofa, Tonga Ph: (676) 21360 Fax: (676) 23120	\$43,000															Coordination, Disaster Prevention, First Aid, Blood Bank, Social Welfare, Youth Development
2	Petesaita/ Alonga Disabled Centre for Adults	Lavenia Satini Petesaita/Alonga Disabled Centre Nuku'alofa, Tonga Ph: (676) 29180	\$39,000															Occupational Rehabilitation, Home Visits for disabled adults

<sup>2</sup> 1 Tonga Pa'anga = 61.35 JPY as of end March 2002

No.	Name	Contact	Budget (TD\$) <sup>2</sup>	Description of Activity															
				Type of org.			Type of activity				Field of activity						Other comments		
				Organization of PWDs	Organization for PWDs	International Organization	Program Implementation	Advocacy	Financial Support	Others	Medical	Rehabilitation	Educational	Vocational	Social	CBR		Supportive Devices	Communication Tools
3	Ofa Tui Amanaki Centre for Handicapped Children (OTA) Tongatapu	Pale Fifita P O Box 1252 Nuku'alofa, Tonga Ph: (676) 21950	\$35,000																Kindergarten, Primary School, Secondary School, Home Visit
4	OTA – Vava'u	Peauafi Pifeleti	\$3,000																Care and Education
5	OTA – Ha'apai	Vacant	\$2,000																Home Care and Education
6	OTA – Niua	Losaline Pongi	\$1,000																Home Care
7	Catholic Church	Sione Foliaki, Betty Blake, Box 1978 Fax/Ph.25991 Nuku'alofa, Tonga	\$20,000																Education Women's Rights
8	Mormon Church (Latter Day Saints)	Pita Hopoate Nukualofa, Tonga	\$10,000																Home Visits Donations

No.	Name	Contact	Budget (TD\$) <sup>2</sup>	Description of Activity																
				Type of org.			Type of activity				Field of activity						Other comments			
				Organization of PWDs	Organization for PWDs	International Organization	Program Implementation	Advocacy	Financial Support	Others	Medical	Rehabilitation	Educational	Vocational	Social	CBR		Supportive Devices	Communication Tools	Sport & culture
9	Seventh Day Adventist Church	Teti Pahulu, P O Box 15 Mangaia SDA Nuku'alofa, Tonga	\$5,000																	Dorcas Home Visit, Donations
10	Tokaikolo Women's Group	President Tokaikolo Women's Group Nuku'alofa, Tonga	\$1,000																	Women's Group, Home Visits
11	Salvation Army	P O Box 1035 Nuku'alofa, Tonga Ph: (676) 2124	\$30,000																	Preventive programs on alcohol, drugs and health
12	Free Church of Tonga	Alifereti Mone Nuku'alofa, Tonga	\$1,000																	Youth Groups, Home Visits
13	Royal Household Support	Her Majesty The Queen ,Royal Palace Nuku'alofa, Tonga	\$2,000-\$5,000																	Support in-cash or in-kind land, vehicles
14	Business House	C/- Alonga Centre	\$4,000																	Donations

No.	Name	Contact	Budget (TD\$) <sup>2</sup>	Description of Activity																
				Type of org.			Type of activity				Field of activity						Other comments			
				Organization of PWDs	Organization for PWDs	International Organization	Program Implementation	Advocacy	Financial Support	Others	Medical	Rehabilitation	Educational	Vocational	Social	CBR		Supportive Devices	Communication Tools	Sport & culture
15	Group Local Farmers Support Groups	C/- Alonga Centre	\$2,000																	Food and Materials support
16	Parents of Clients Group	OTA Centre	\$2,000																	Fundraising, love and care
17	Parents and Teachers Association	OTA Centre	\$2,000																	Technical Assistance
18	Private Families	Red Cross Society	\$1,000																	Donations

## Annex 2. List of Disability-related Aid Projects

No	Donor	Project	Implementing Organization	Budget	Duration	Description
<b>Multilateral Organizations</b>						
1	United Nations, FAO	Chicken Farm	FAO	N/A	1998	Agricultural/vocational rehabilitation for adult PWDs.
<b>Bilateral Organizations</b>						
1	British Embassy	Computer Skill Training		N/A	2001	Provision of alternative skills and vocational rehabilitation for adult PWDs.
2	CIDA	Pig Farm		N/A	1999	Agricultural rehabilitation programs for adult PWDs.
3	Japan Grant Assistance for Grassroots program	Dormitory	Japanese Embassy	TD\$7,000	1991	Boarding facilities for 40 adult PWDs during in-centre training
4	Japan Grant Assistance for Grassroots program	School Bus	Central Planning	TD\$11,000	1996	School Transport for CWDs
5	Australian Government	Training	Prime Minister's Establishment Division	TD\$5,000	Annually	Teachers to gain more knowledge

No	Donor	Project	Implementing Organization	Budget	Duration	Description
6	British High Commission	Therapy Mats	OTA	TD\$20,000	1995	For physiotherapy exercises
7	British High Commission	Photocopier	OTA	TD\$10,000	1999	To help produce teaching aids.
<b>Other Donors</b>						
1	Queen	Outreach Programs (Bus)	Japan Outreach	TD\$3,900	1999	Disabled Centre outreach transportation
2	Women	Workshop	Local	TD\$2,000	1980	Vocational Rehabilitation, music and other groups employment (Packaging for B.H.)
3	Queen	Hall	Japan Outreach	TD\$7,500	1998	Open rehabilitation workshop on crafts and in-centre activities.
4	CBM Germany	Braille Equipment	OTA	\$2,000 Euro	Annually	Education equipment for the blind.
5	Tonga Medical Mission	E-mail Bedding School Supplies	OTA	TD\$10,000	1999	Support for teaching communication etc.
6	Tonga	Land and Building	Royal Household	TD\$20,000	1970	Capital development costs.