

Guyana's Low Carbon Development Strategy

**Andrew Bishop,
Office of the President, Guyana**

**Land Policy and Administration Conference
World Bank, Washington D.C
April 26-27, 2010**

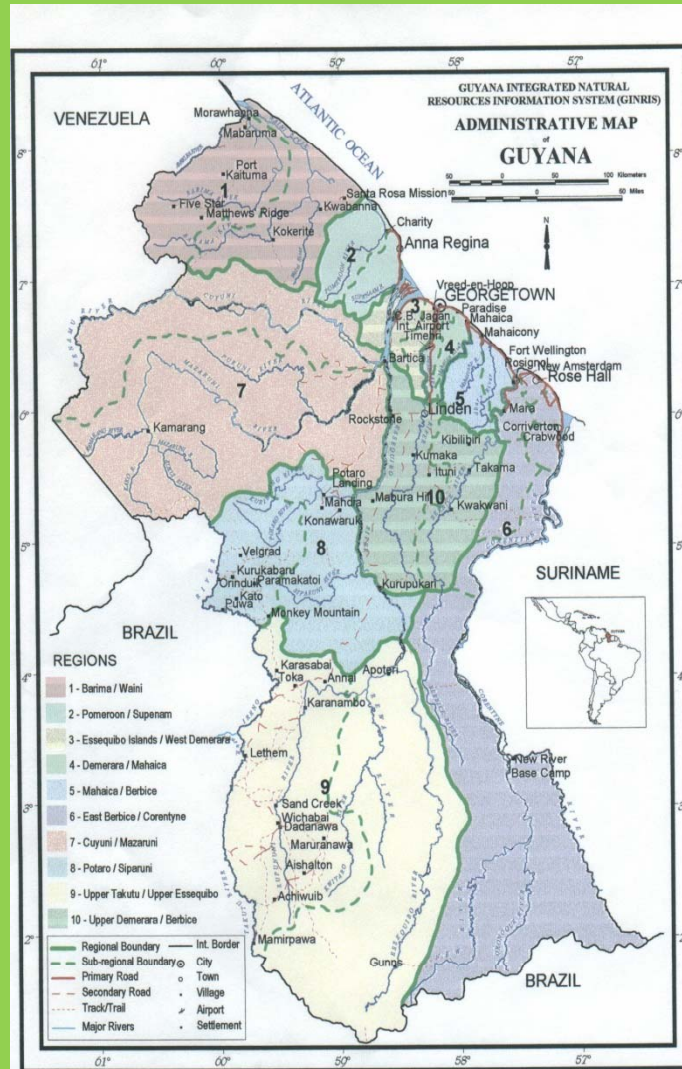
OVERVIEW

- Country background
- Policy context
- Low Carbon Development Strategy
- Role of Land Administration

Location in South America

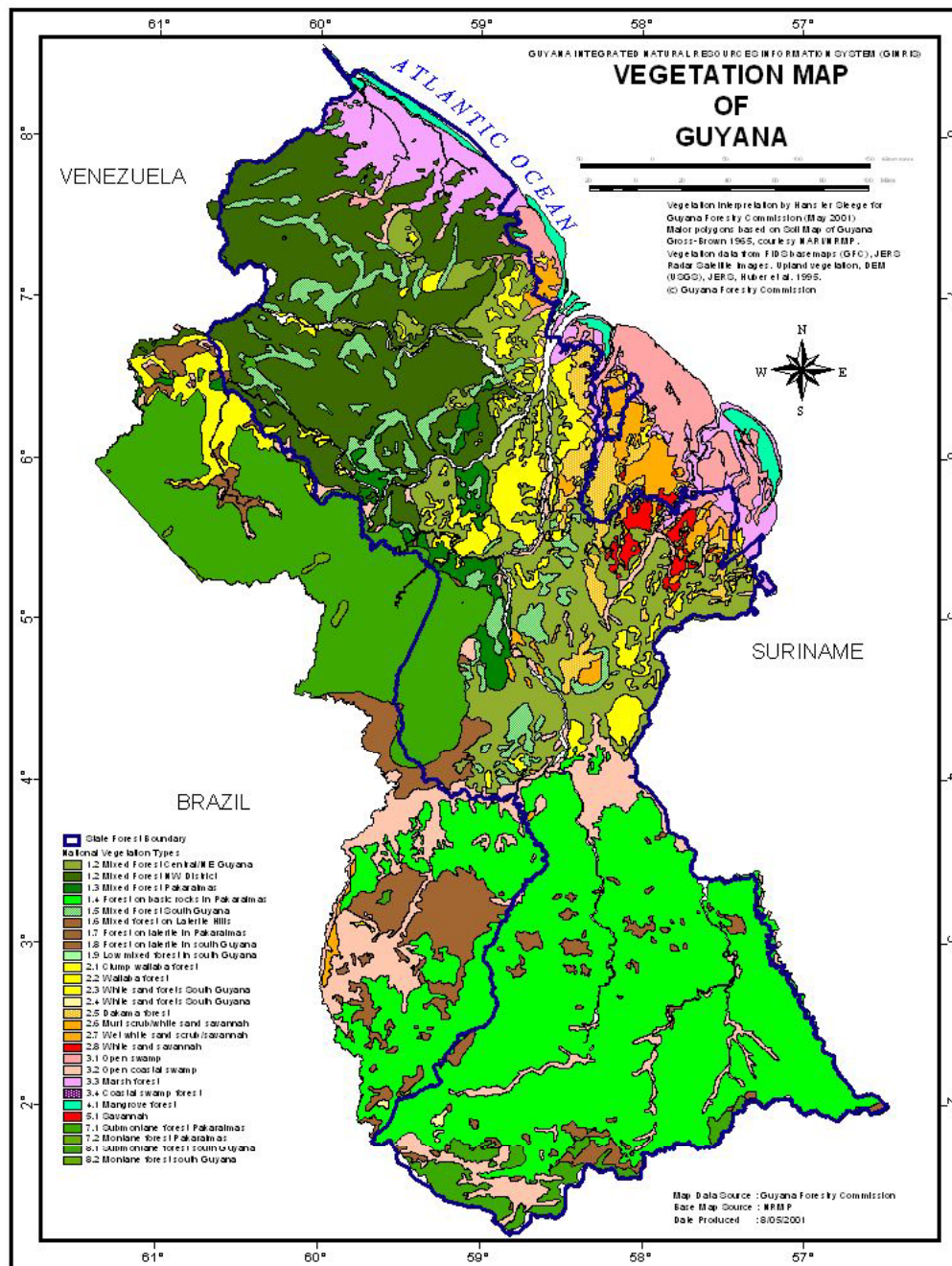


Guyana Map



Basic Profile

Land area	215,000 sq. km or 83,000 Sq miles
Populated area	1.5m below sea level
Rainfall	2500mm average
Population	741,000
Population density (sq. km)	3.6 sq km
Population growth (annual %)	0.6



Institutional Framework

Forestry Commission

Administer and regulate State Forest Estate

Geology and Mines Commission

Regulate mining – gold, diamond, bauxite

Lands and Surveys Commission

Administer and regulate public lands

Lands and Surveys Commission

- Established 2001 as Autonomous Agency
- Charge of all public lands
- Survey function – topographic, hydrographic and cadastral
- Land Information system
- Land Use Planning function
- Land administration function – leasing of public lands
Land tenure regularization –
security of tenure as land development strategy

Amerindian land titling

- 97 Villages titled to date; 70 surveyed
- Land demarcations ongoing
- Of 27 remaining, 16 in process
- Rest sub-judice or declined surveys.

Amerindian land extensions

- Ongoing review of requests for extensions
- Process for extension consistent with the Act
- Requests assessed on justified need

Amerindian untitled Communities

- Act provides for community councils
- Status of a body corporate
- Can regulate and manage their resources
- Parity and benefits as a Village council

Subsurface rights

- Subsurface rights vested in State
- Consultation among Govt, Developer, Village
- EIA and mitigation of impacts
- 7% tribute plus negotiated benefits

Free Prior and Informed Consent

- Govt upholds free prior and informed consent in Amerindian areas.
- Villages free to opt in/not opt in to a REDD scheme
- Free prior and informed consultation in areas contiguous to titled villages
- Multi-stakeholder Steering Committee
- IIED monitor report – highly transparent

Guyana's Low Carbon Development Strategy

Links with Climate Change
 Forests
 Economic development

Climate change is occurring globally

- Rising levels of GHG's
 - Rising temperatures (+ 0.8 C since 1800's)
 - Changes in rainfall patterns
 - Rising sea levels (3.1 mm per yr)
 - Decreasing snow cover
 - More extreme weather events
-

Effects of climate change

Impacts on human communities and livelihoods

Increased vulnerability to natural disasters (land slides, hurricanes).

Increased spread of diseases such as malaria, dengue

Vulnerability of low-lying islands and flat delta regions at mouths of large rivers.

Food security, hunger, malnutrition



Link with Forests - mitigate climate change

Deforestation and land use change are a significant (and growing source of GHGs)
> 14 million ha deforested each year, releasing about 2.2 billion tons of CO₂ per year

Because deforestation and land use changes account for roughly 20% of global GHG emissions, forests have to be part of the climate 'solution'

Tropical forests offer cheapest abatement solution



GUYANA'S FORESTS

Total land area	21.5 million hectares
Total forested area	18.6 million hectares
State Forest area	12.9 million hectares
Area allocated	7.8 million hectares
Unallocated State Forest	5.1 million hectares
Forest types	Rainforest; Savannah forest, Montane forest, Mangrove forest, Marsh forest Swamp forest Seasonal
Area deforested	Less than 1 percent per annum

Two global forces : the development dilemma

Economic development

- Guyana wants to increase incomes and standard of living..
- New economic opportunities are emerging in Guyana - infrastructure development and globally increasing commodity prices.
- Unconstrained economic development could endanger Guyana's standing forests.

**Done poorly,
development could
cause deforestation**

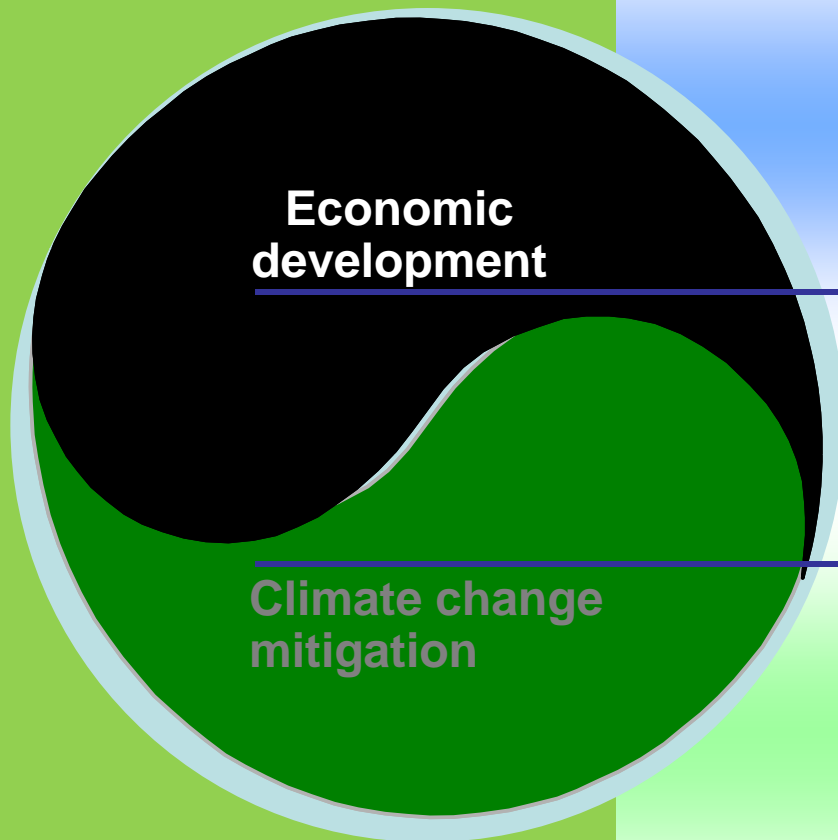


Climate change mitigation

- Urgent action is needed to address climate change.
- REDD is one of the most cost-effective solutions.
- Guyana can be part of the solution by putting up its forest for climate change
- However, our forests are our greatest asset, and we also have to develop .

**Done poorly,
climate policy could stunt
development**

The Low Carbon Development Strategy: Reconciling this dichotomy



- Substantial growth in incomes and employment, driven by a cleaner, more diversified and internationally competitive industrial base
- Positive incentives and payments for forest conservation and protection
- Global financing for adaptation measures

- Maintenance of carbon storage and biodiversity in standing natural forests
- Limited emissions growth across all sectors of the economy driven by significant efficiency gains and international assistance, including carbon finance
- Managing adaptation requirements

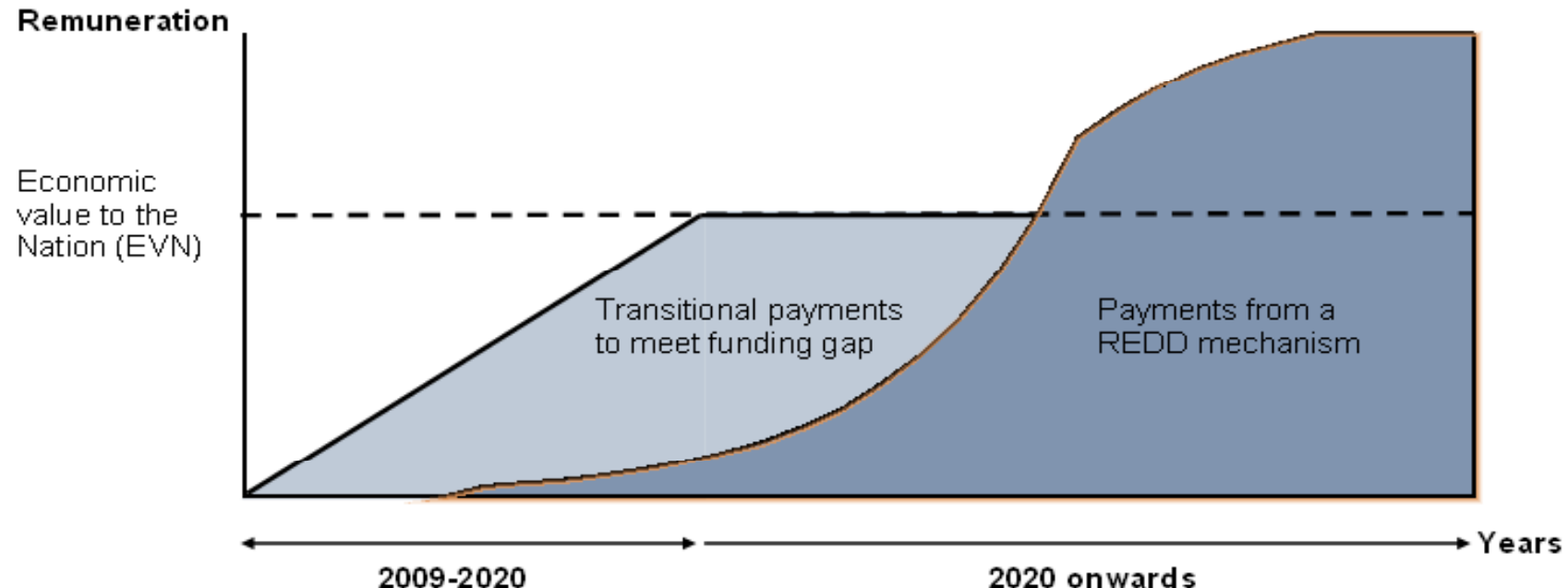
VALUE OF GUYANA'S FOREST

- Forest is our greatest asset
- McKinsey valuation Study
- \$588M economic value to the nation
- \$40B EVW economic value to the world

How will the Strategy attract financial resources?

Potential flow of payments from transitional funding sources to an at-scale REDD mechanism

ILLUSTRATIVE



- Funding gap met through transitional payments from strategic partners and/or global fund(s)
- Payments ramp-up to reach EVN by 2020

- Increasing payments from a REDD mechanism
- Transitional payments ramp down but provide the "gap funding" required to meet EVN
- REDD payments eventually meets or exceeds EVN (transitional funding no longer required)

SOURCE: "Climate Change: Financing Global Forests: The Eliasch Review", Government of the United Kingdom (2008)

MAJOR ELEMENTS

- Standing Forests, avoided deforestation
- Reducing emissions from deforestation and degradation
- Conservation
- Sustainable management of forests

MAJOR ELEMENTS

Energy

- Hydropower Amaila Falls project

- Solar Remote locations

- Wind

Biomass, biofuels Link with agriculture

MAJOR ELEMENTS

- Low impact agriculture
- Ecotourism
- Information technology

LCDS Process

- Countrywide stakeholder consultations
- Awareness campaign using various media
- Multi stakeholder Steering Committee
- Independent monitoring
- Iterative drafting based on consultations

Role Of Land Administration/Agency

- Low carbon investment support
 - Soil capability
 - Land suitability
 - Surveys
 - Mapping
 - Zoning
 - Land Use Planning
- Land allocation
 - Leasing of lands for low carbon development

Thank You!