



SOCIAL DEVELOPMENT DEPARTMENT  
The World Bank

# Empowering People by Transforming Institutions:

*Rural institutions and sustainable livelihoods*



# Rural Institutions & Sustainable Livelihoods

- ARD + SDV initiative: external literature review & internal stocktaking (desk review) in 2006
- Identify the World Bank experience in Mobilizing Local Institutional Capabilities to Sustain and Enhance Rural Livelihoods

## **Internal stocktaking and external review**

1. Better understand World Bank approaches to support Rural Institutions
2. Lessons learned from projects experience on what forms of rural institutions are most appropriate to engage in improved service provision in rural areas
3. State of literature on rural institutions (N.Uphoff)

# Applied research on rural institutions for 2007-2008

## TFESSD: mobilizing Rural Institutions for Sustainable Livelihoods and Equitable Development

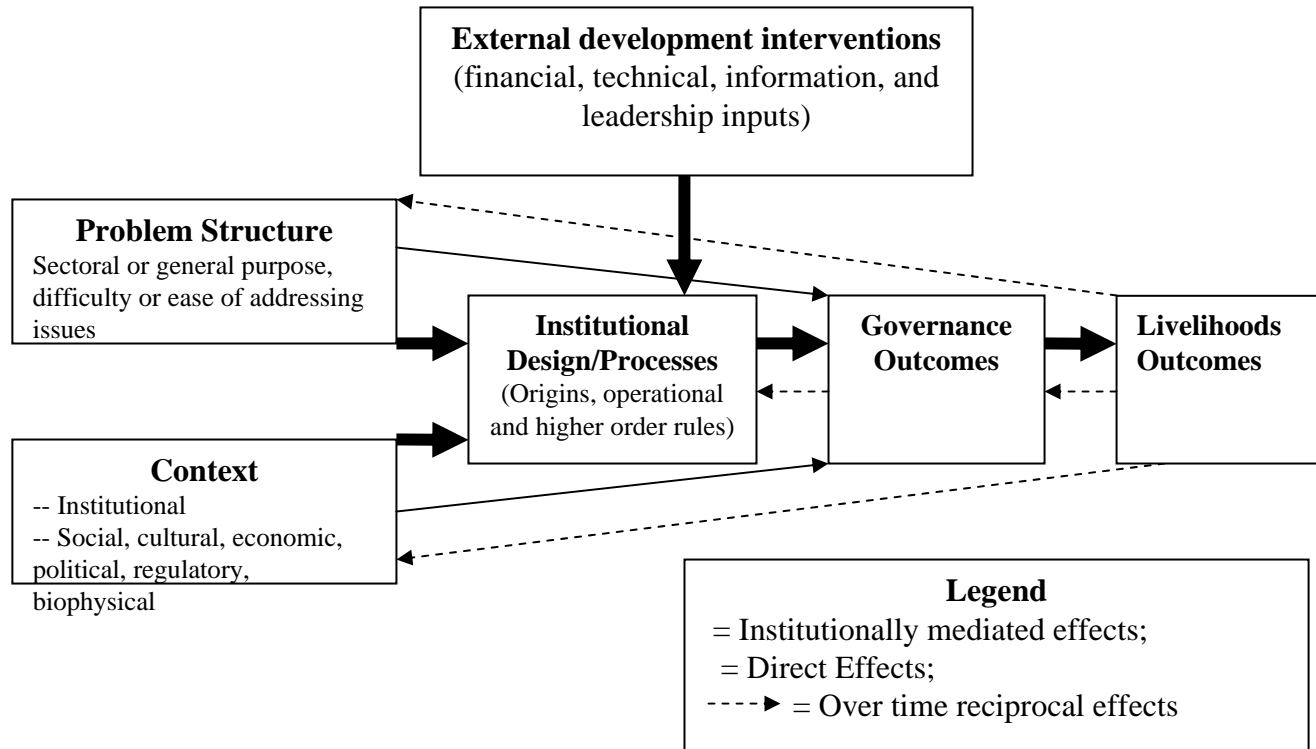
### ■ Activities:

- Workshop in February 2007 to distill current research of **CGIAR** centers
- Develop benchmarking tool for Ag. Innovation systems with nation indicators and piloting implementation to strengthen institutions and track impacts on rural poor.
- In depth analytical work in 5 countries: Ethiopia, Vietnam, Yemen, Afghanistan, India
  - Mapping of LLIs rural populations rely on for Natural Resource Management, livelihoods and Governance
  - Develop a series of country specific recommendations on mobilizing RIs for sustainable livelihood and equitable development

# Objectives of the study

- Look at rural institutions as a resource through a series of country-specific recommendations and measures
- Increase the ability of clients and the WB to effectively support rural institutions.

# Institutional Analysis, Governance, and Livelihoods Framework



# Typology of institutions used in the study

|          | Public   | Market   | Collective   |
|----------|--|--|--|
| Formal   | <ol style="list-style-type: none"> <li>1. Local administrative organizations</li> <li>2. Local government organizations</li> <li>3. Education and training institutions</li> </ol> | <ol style="list-style-type: none"> <li>1. Service organizations</li> <li>2. Private voluntary organizations</li> <li>3. Private businesses</li> <li>4. Banks</li> <li>5. Contract farming arrangements</li> </ol>  | <ol style="list-style-type: none"> <li>1. Membership organizations</li> <li>2. Cooperatives (producer, savings, consumer, labor, marketing)</li> <li>3. NGOs</li> <li>4. Women's, youth, religion, and ethnic group based organizations</li> </ol>                   |
| Informal | <ol style="list-style-type: none"> <li>1. Discussion meetings</li> <li>2. Political party networks</li> </ol>  | <ol style="list-style-type: none"> <li>1. Exchange groups/norms</li> <li>2. Marketing arrangements</li> <li>3. Technology sharing arrangements (tractors, ploughs, cell phones)</li> <li>4. Share cropping arrangements</li> <li>5. Information sharing norms</li> </ol> | <ol style="list-style-type: none"> <li>1. Community based organizations</li> <li>2. Self help groups</li> <li>3. Savings and credit associations/revolving funds</li> <li>4. User groups</li> <li>5. Gender and work norms</li> <li>6. Caste institutions</li> </ol> |

# Institutional domains

- - Governance
- - Agriculture services and production
- - Renewable resources

| Country Name | Institutional Domains for Study   |
|--------------|---|
| Ethiopia     | Rural producer cooperatives (RPOs), Irrigation cooperatives (NRM), Cooperative governance arrangements (governance) |
| Vietnam      | Forest protection committees (NRM), Agriculture cooperatives (RPOs), Democracy committees (governance)              |
| Yemen        | Agriculture cooperatives (RPOs), District local councils (DLCs), Water Users' Associations (NRM)                    |
| India        | Gram Panchayats (governance), Pani Panchayats (NRM); Self Help Groups (RPOs)  |
| Afghanistan  | Community Development Councils (governance)   |

# Institutional Maps

- Institutional mapping for rural governance and livelihoods is the *visual presentation of different institutions and their relationships* in a given social context.
- Specific Domains
- Specific Geographical Areas
- Social Network Analysis
  - Local rural organizations = nodes
  - Their interactions (power, people, services...) as ties
  - & Provide information on the local context (regulatory framework, governance, opportunities, etc).

# Scope and themes covered

- 1. Importance of local institutions as **development partner** (interface, facilitator, and/or conduit for external interventions);
- 2. **Trade-offs** between improvements in **inclusiveness/participation, and efficiency** of institutional functioning?
- 3. **Role of representation, participation, and accountability** (downward vs upward) in improving both the quality of governance and livelihoods;
- 4. **Nature and sequence of external resources** and interventions to promote local capacity and autonomy;
- 5. **Adaptation of external interventions to local contexts** for greater effectiveness in improving governance and livelihoods outcomes.

# Thank you

[Http://worldbank.org/mobilizinginstitutions](http://worldbank.org/mobilizinginstitutions)