

# The Process



Design and Modeling



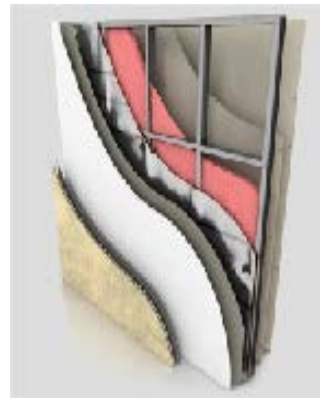
Software / Detailing



Roll forming



Building Materials



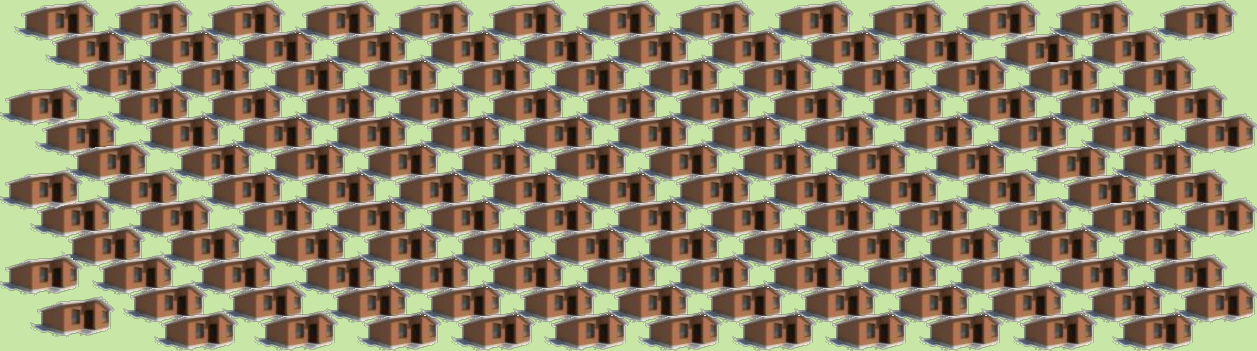


Building assemblies



Construction

# Increased Productivity & Building Efficiencies

Time	Production	
1 Shift = 8 Hrs		6.4 houses per shift
1 Week = 7 Days x 2 Shifts = 112 Hours		90 houses per week
1 Year = 50 Weeks =5600 Hours		4500 houses per annum

# Getting Close to Our Customers

● Customers

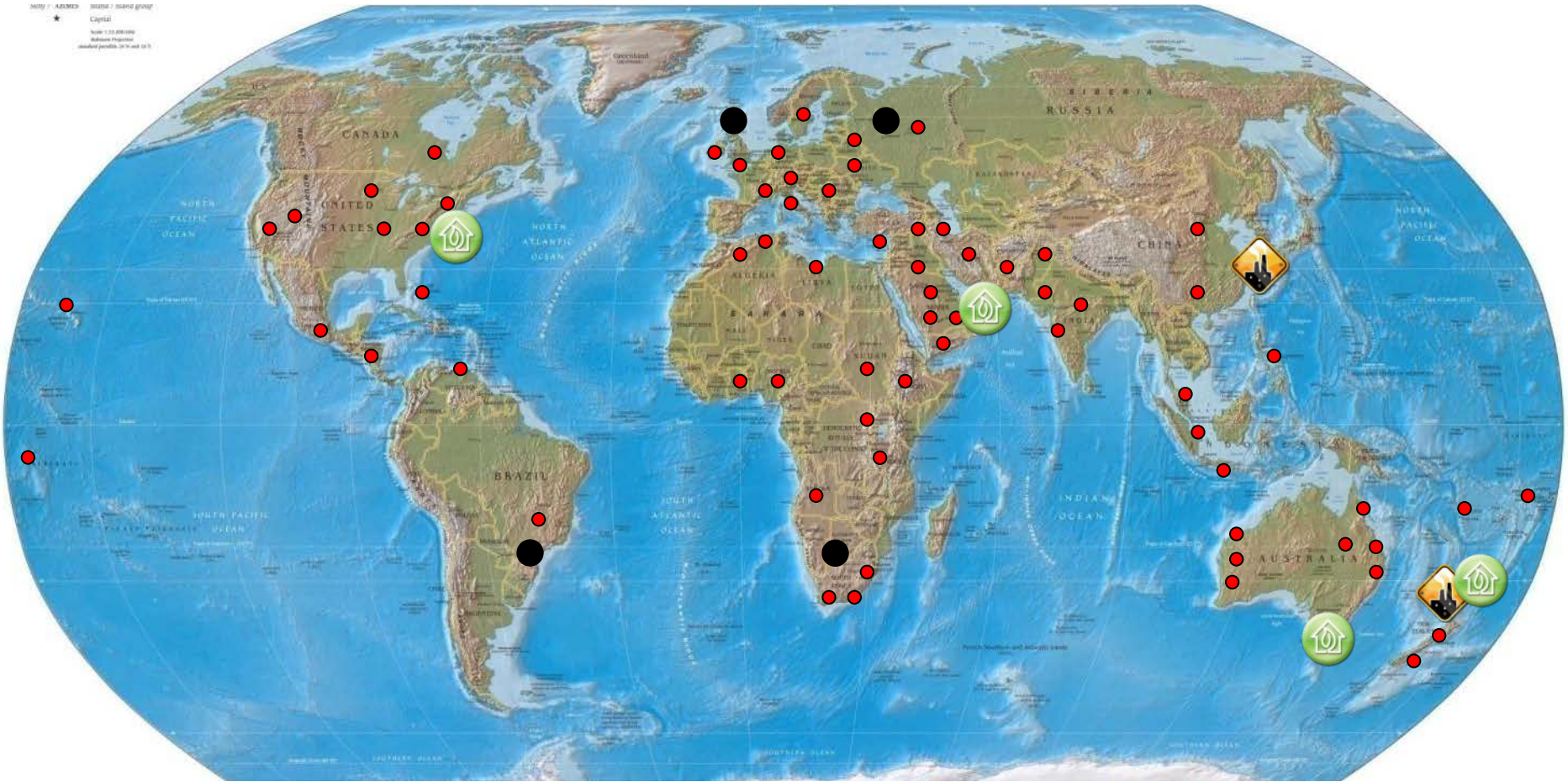
● Distributors



Manufacturing Plant



FRAMECAD Offices (incl. Dubai Beachhead)



Currently export to over 60 countries.

## Why FRAMECAD CFS (Cold Formed Steel)?

### Basic Material Attributes

**Strong** – highest strength to weight ratio of any building material. Meets very tough performance standards

**Inorganic** – will not rot, warp, split, crack, creep, support mold growth, or be eaten by termites and other insects

**Dimensionally Stable** – does not expand or contract with moisture content

**Consistent Material Quality** – No regional variance in composition performance. International standards, global requirements.

**Noncombustible** – does not burn and will not contribute fuel to the spread of a fire.

**Earthquake Resistance** - Superior seismic performance due to steel's ductility



# Why FRAMECAD® CFS (Cold Formed Steel)?

## Benefits to the Builder/ Developer

**Speed** – Faster erection and delivery time  
Up to 25% faster than wood  
Up to 50% faster than concrete

**Weight** – Lighter than other framing materials  
Up to 30% lighter than wood  
Up to 60% lighter than concrete

**Scrap** – Less scrap and waste

**Quality** – Higher quality offering to the consumer

**Green** - Steel framing is “Green” because it is recycled and recyclable

**Safer Construction** – Lighter material & controlled operations

**Call-Backs** – Straight walls, square corners, *fewer call-backs*



# Machines



- **Fully self contained mobile factory for rapid deployment**

- Suitable for construction in remote locations or disaster relief
- Certified shipping container with internal gantry
- Diesel generator, air-conditioned workspace, and complete set of tools



- **Specifications**

- 1 x 40 foot High Cube – Double Doors both ends, double side door. Certified for shipping.
- 1 x 400VAC power outlet with main switch
- 3 x 230VAC Double Power points
- Plywood floor with 2 coats of epoxy sealer
- 6 x flush mounted tie downs fixed to floor
- 2mm PVC Curtains for end door cavity

