



IDA15

**MULTILATERAL DEBT RELIEF INITIATIVE (MDRI):
UPDATE ON DEBT RELIEF BY IDA
AND DONOR FINANCING TO DATE**

**International Development Association
Resource Mobilization (FRM)**

February 2007

Selected Abbreviations and Acronyms

AfDF	African Development Fund
FRM	Resource Mobilization Department
FY	Fiscal year
HIPC	Heavily Indebted Poor Countries
IDA	International Development Association
IMF	International Monetary Fund
MDRI	Multilateral Debt Relief Initiative
PAYG	Pay-as-you-go
SDR	Special Drawing Right

TABLE OF CONTENTS

Executive Summary	i
I. Introduction	1
II. Debt Relief by IDA under the MDRI	2
III. Donor Financing Commitments to the MDRI	3

Charts

Chart 1: Updated Time Profile of Forgone Credit Reflows of IDA (FY06-44, USD million equiv.)	3
Chart 2: Level of Donor Financing Commitments to the HIPC Initiative (USD million equiv.)	4
Chart 3: Level of Donor Financing Commitments to the MDRI (USD million equiv.)	6

Tables

Table A: MDRI Financing Summary – IoCs Received (USD)	5
Table 1: Total Debt Relief to be Delivered by IDA: Estimated Volume since Inception of the HIPC Initiative (FY1996-2044)	
Table 1a: in SDR	7
Table 1b: in USD	8
Table 2: Estimated HIPC and MDRI Debt Relief by IDA, from IDA14 Period (FY07-44) By HIPC Country	
Table 2a: in SDR	9
Table 2b: in USD	10
Table 3: Estimated HIPC and MDRI Debt Relief by IDA, from IDA14 Period (FY06-44) By Fiscal Year	
Table 3a: in SDR	11
Table 3b: in USD	12
Table 4: Estimated HIPC and MDRI Debt Relief by IDA, from IDA14 Period (FY06-44) By HIPC Country and IDA Replenishment	
Table 4a: in SDR	13
Table 4b: in USD	14
Table 5: Estimated HIPC Debt Relief by IDA, from IDA14 Period (FY06-44) By HIPC Country and IDA Replenishment	
Table 5a: in SDR	15
Table 5b: in USD	16

Table 6:	Estimated MDRI Debt Relief by IDA, from IDA14 Period (FY07-44) By HIPC Country and IDA Replenishment	
	Table 6a: in SDR	17
	Table 6b: in USD	18
Table 7:	MDRI Financing Summary – IoCs Received (SDR equiv. millions).....	19
Table 8:	Donor Pledges to the MDRI	
	Table 8a: in SDR	20
	Table 8b: in National Currency.....	21
Table 9:	Donor Financing of IDA’s Forgone Reflows due to the MDRI: Total Financing Commitments Received	
	Table 9a: in SDR	22
	Table 9b: in USD	23
	Table 9c: in National Currency.....	24
Table 10:	Donor Financing of IDA’s Forgone Reflows due to the MDRI: Firm Financing Commitments Received (Unqualified IoCs), by Period	
	Table 10a: in SDR	25
	Table 10b: in USD	26
	Table 10c: in National Currency.....	27
Table 11:	Irrevocable MDRI Debt Relief Provided by IDA vs. Firm Donor Financing Received	
	Table 11a: in SDR	28
	Table 11b: in USD	29

EXECUTIVE SUMMARY

- 1. Since the inception of the HIPC Initiative in 1996, total debt relief provided by IDA under the HIPC Initiative and the MDRI is currently estimated at about USD 53.6 billion, including USD 36.4 billion under the MDRI.** The current MDRI estimate is about USD 250 million lower than the original estimates at the time of MDRI approval in mid-2006.
- 2. As of December 31, 2006, 21 HIPC countries have reached the HIPC completion point, receiving a total of USD 40.3 billion of irrevocable debt relief by IDA, equivalent to about 75 percent of the total debt relief to be provided by IDA.** Of this amount, USD 28.3 billion has been provided under the MDRI and the balance of USD 12.0 billion under the HIPC Initiative. The remaining 19 HIPC countries will benefit from the MDRI upon reaching the completion point.
- 3. As of December 31, 2006, donors provided unqualified, firm financing commitments representing 47 percent of the originally projected MDRI costs of IDA over the 10-year disbursement horizon of IDA14 (FY07-16).** Another 26 percent of forgone credit reflows over that horizon are covered by qualified financing commitments, bringing total donor financing commitments to 73 percent of original MDRI costs over the 10-year disbursement horizon of IDA14. Over the four decades of MDRI implementation, aggregate donor financing commitments received are currently equivalent to 66 percent of total original MDRI costs of IDA; this includes firm, unqualified financing commitments from donors of USD 3.8 billion, covering 10 percent of total MDRI costs over four decades.
- 4. Thirty-four donor countries have pledged to contribute to the MDRI replenishment of IDA. As of December 31, 2006, 28 of these donors have provided their Instrument of Commitment, for a total commitment volume of USD 24.3 billion.** This compares with total target contributions for all donors of USD 33.7 billion net of the structural financing gap, based on the original MDRI cost estimates. Donors will need to discuss how to close the structural financing gap of 8.0 percent under the MDRI replenishment, which represents USD 2.9 billion based on the original MDRI cost estimates.
- 5. As of December 31, 2006, donors have provided firm financing commitments of USD 3.8 billion over the four decades of MDRI implementation. This compares against a volume of irrevocable debt relief provided by IDA under the MDRI of currently USD 28.3 billion.**

MULTILATERAL DEBT RELIEF INITIATIVE (MDRI):

UPDATE ON DEBT RELIEF BY IDA AND DONOR FINANCING TO DATE

I. INTRODUCTION

1. The Multilateral Debt Relief Initiative (MDRI) was proposed by G8 Heads of States in July 2005 and subsequently welcomed by the Development Committee in September 2005. The MDRI provides 100 percent cancellation of IDA, AfDF, and IMF debt for countries that reach the HIPC completion point. Its objectives are twofold: Deepening debt relief to HIPCs, while safeguarding the long-term financial capacity of IDA and the AfDF; and encouraging the best use of additional donor resources for development by allocating them to low-income countries on the basis of policy performance. Debt relief provided under the MDRI is in addition to existing debt relief commitments by IDA and other creditors under the Enhanced HIPC Debt Initiative. Under the financing package for the MDRI, donors agreed to finance IDA's MDRI costs on a 'dollar-for-dollar' basis.

2. The Board of Executive Directors of IDA approved IDA's participation in the MDRI on March 28, 2006.¹ IDA's Board of Governors adopted on April 21, 2006 the Resolution authorizing an increase in IDA resources to cover MDRI-related costs.² The Board of Executive Directors of IDA approved IDA's implementation of the MDRI as of July 1, 2006, the beginning of fiscal year 2007.³ The MDRI replenishment of IDA became effective as of August 4, 2006.

3. This report responds to the request by donors for ongoing monitoring of donor contributions to the MDRI and to review the status of MDRI financing at the beginning of the IDA15 discussions.⁴ It also responds to the request by IDA Deputies at the IDA14 Mid-term Review in November 2006 for a review of the status of MDRI implementation by IDA. Section II of this report provides updated estimates of the volume of debt relief provided by IDA under the MDRI. Section III offers updated information on donor financing commitments received under the MDRI replenishment of IDA.

4. The data contained in this report are as of December 31, 2006. They are shown in nominal value terms as this forms the basis for donors' compensatory contributions to IDA over time. Data are presented in SDR and in USD equivalent terms, as well as in national currency terms, where applicable.⁵

¹ "IDA's Implementation of the Multilateral Debt Relief Initiative," IDA/R2006-0042, March 17, 2006.

² "Additions to Resources: Financing the Multilateral Debt Relief Initiative," Resolution No. 211 adopted on April 21, 2006.

³ "Implementation Start Date of the Multilateral Debt Relief Initiative (MDRI)," IDA/R2006-0122, June 9, 2006.

⁴ See paras. 25 and 40, respectively, of Resolution No. 211 adopted on April 21, 2006.

⁵ The MDRI cancels the portion of IDA credits remaining after applying HIPC debt relief. The bulk of IDA credits cancelled are denominated in SDR, while HIPC debt relief is denominated in USD terms. As a result, the USD equivalent volume of debt relief provided under the MDRI will vary with foreign exchange rates. Current cost estimates are based on the foreign exchange reference rate of USD/SDR 1.47738 agreed under the MDRI replenishment of IDA.

II. DEBT RELIEF BY IDA UNDER THE MDRI

5. **Total debt relief.** Since the inception of the HIPC Initiative in 1996, total debt relief to be provided by IDA under HIPC and MDRI combined is currently estimated at about USD 53.6 billion (see the enclosed [Table 1b](#)).^{6 7 8} This total amount can be broken down into two elements:

- From July 1, 2006, over the implementation period of the MDRI (FY07-44), IDA is estimated to provide a total of USD 49.6 billion in debt relief, including USD 36.4 billion under the MDRI and USD 13.2 billion under the HIPC Initiative. Donors have committed to finance these amounts over time as reflow losses occur.
- In addition, prior to July 1, 2006, IDA has already provided about USD 4.0 billion of HIPC debt relief. The bulk of this amount has been financed through IBRD net income transfers to the HIPC Trust Fund, complemented by bilateral donor financing.

6. **Irrevocable debt relief to completion point HIPCs.** As of December 31, 2006, 21 HIPC countries have reached the HIPC completion point. These countries have received a total of USD 40.3 billion of irrevocable debt relief from IDA, equivalent to about 75 percent of the total debt relief to be provided by IDA. Of this amount, an estimated USD 28.3 billion has been provided under the MDRI and the balance of USD 12.0 billion under the HIPC Initiative (see [Table 1b](#)).

7. **Donor financing for IDA's debt relief costs.** Donor financing for IDA's debt relief under the *HIPC Initiative* was introduced in the IDA14 replenishment, beginning in *FY06*. Donor financing of *MDRI*-related costs of IDA began in *FY07*, at the start of IDA's implementation of the MDRI, and is scheduled to end by FY44 when the last IDA credit eligible for cancellation under the MDRI would have matured. Over the period FY06-44, IDA will provide an estimated total amount of debt relief of USD 50.1 billion (see [Table 2b](#)); this amount is composed of USD 49.6 billion of debt relief over the MDRI implementation period (FY07-44) plus HIPC debt relief costs during FY06 of USD 0.5 billion. IDA's debt relief is broken down into an estimated credit principal volume of USD 44.9 billion (representing about 90 percent of total debt relief) and USD 5.2 billion of forgone service charges (see [Table 2b](#)). For the 21 completion-point countries, SDR-denominated credits represent about 95 percent of total credits cancelled, with USD-denominated credits representing the balance.⁹

⁶ Estimates of debt relief under the HIPC Initiative and the MDRI are for potentially eligible countries. Estimates are subject to change as a result of future reviews of countries' debt stocks and the timing of expected decision and completion point dates.

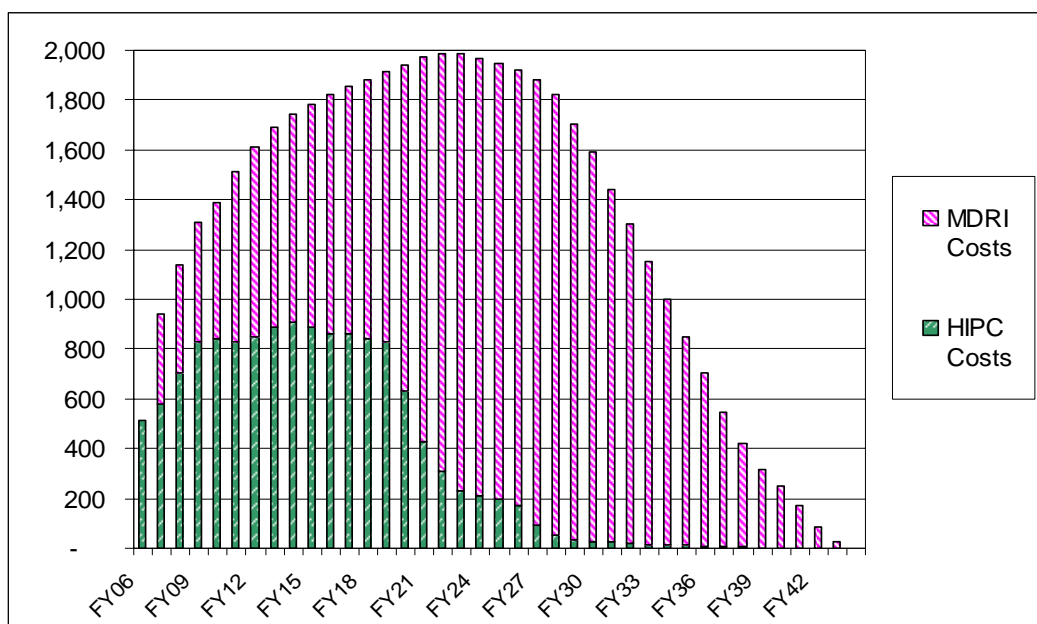
⁷ Current estimates for IDA's HIPC and MDRI debt relief are based on a list of 40 HIPC countries, including 10 pre-decision point HIPCs that meet the income and indebtedness criteria based on end-2004 figures and that might wish to be considered for HIPC debt relief. Prior estimates for IDA's MDRI debt relief included 42 potential HIPC countries. Following a meeting of the IDA Board on the HIPC Sunset Clause on September 7, 2006, two countries originally included in list of 42 HIPCs have been excluded from this list: Myanmar, due to insufficient data to assess debt ratios against the HIPC thresholds; and Lao PDR, which had expressed its desire not to participate in the HIPC Initiative.

⁸ This amount excludes USD 0.8 billion of IDA credit arrears of pre-decision point HIPCs.

⁹ IDA credits approved prior to August 1, 1980 were denominated in US Dollars.

8. **Time profile of forgone credit reflows.** The annual volume of forgone credit reflows of IDA under the HIPC Initiative equaled USD 513 million in FY06 (see [Table 3b](#)). For FY07, with the MDRI being implemented, the combined volume is expected to increase to an estimated USD 938 million. Annual volumes of forgone credit reflows of IDA due to the HIPC Initiative and the MDRI are projected to increase to USD 2.0 billion by FY23, then decrease to about USD 1.0 billion by FY34 and further to zero after FY44. Over the first decade of FY06-16, IDA is projected to forgo credit reflows of about USD 15.4 billion, equivalent to about 31 percent of the total volume of forgone credit reflows over the four decades of FY06-44. [Chart 1](#) illustrates the updated time profile of forgone credit reflows of IDA due to the HIPC Initiative and the MDRI.

Chart 1: Updated Time Profile of Forgone Credit Reflows of IDA (FY06-44, USD million equiv.)



9. **Credit reflows forgone by IDA replenishment period.** Over the IDA14 commitment period (FY06-08), the total volume of forgone credit reflows due to debt relief provided by IDA is estimated at USD 2,590 million (see [Table 4b](#)). This includes forgone credit reflows due to the HIPC Initiative of USD 1,798 million (see [Table 5b](#)). That HIPC-related amount over three years is being financed under the IDA14 replenishment framework through donor contributions and through a final transfer from IBRD net income. Over the first decade of the MDRI (FY07-16), the volume of IDA’s forgone credit reflows due to debt relief under the MDRI is estimated at USD 6,757 million (see [Table 6b](#)). Donors have agreed to finance this 10-year amount under the MDRI replenishment, preferably through firm financing commitments.

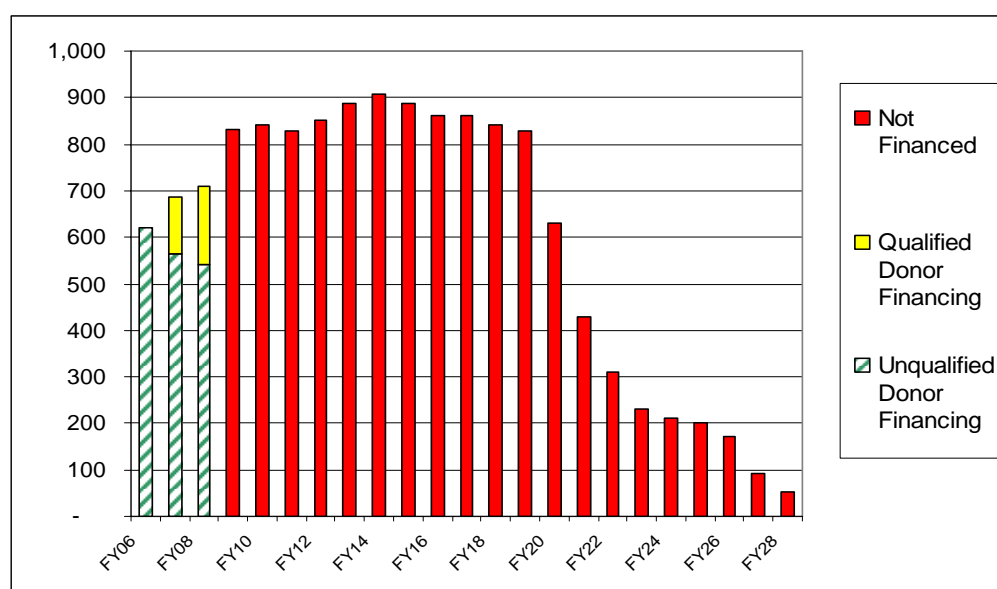
III. DONOR FINANCING COMMITMENTS TO THE MDRI

10. This section provides information about the current status of donor financing commitments received for IDA’s debt relief costs. These donor commitments are based on estimates for HIPC costs of IDA as established at the time of concluding the IDA14 discussions in February 2005, and estimates for MDRI costs of IDA as of the time of concluding the MDRI

replenishment discussions in March 2006, respectively. Original cost estimates are being used in this section for ease of reference and to ensure comparability of volumes of donor financing received over time. Section II provided updated cost estimates, as of December 31, 2006. IDA's cost estimates for debt relief will be updated once again as of June 30, 2007, then providing the basis for donors' further financing commitments during the IDA15 period.

11. **HIPC financing within IDA14.** IDA14 was the first replenishment for donors to finance IDA's forgone credit reflows due to the HIPC Initiative.¹⁰ Donor financing of HIPC costs occurs on a pay-as-you-go basis, over the 3-year commitment period of each IDA replenishment. Over the 3-year commitment period of IDA14 (FY06-08), IDA forgoes an estimated USD 1,798 million of credit reflows due to the HIPC Initiative. After using remaining resources of USD 384 million from prior IBRD transfers to the HIPC Trust Fund, a balance of about USD 1,414 million of HIPC costs during FY06-08 will be financed by donor commitments received under IDA14. Chart 2 illustrates the time profile of HIPC-related costs of IDA and the current level of donor financing commitments received.

Chart 2: Level of Donor Financing Commitments to the HIPC Initiative (USD million equiv.)



12. **The MDRI replenishment of IDA.** To finance IDA's forgone credit reflows under the MDRI, donors established a separate MDRI replenishment, spanning four decades (FY07-44). In order to preserve IDA's advance commitment capacity - under which IDA uses its stream of available future credit reflows to back disbursements on approved credits and grants - donors

¹⁰ In IDA14, donors reaffirmed the intent of the Development Committee that HIPC costs should not damage IDA's finances (see: *Development Committee Communique*, dated September 27, 1999). In IDA14, donors also supported the arrangement whereby the IDA Deputies had agreed that the financing of IDA's HIPC debt relief costs would be addressed in 2004, in conjunction with the IDA14 replenishment discussions (see: *Chairman's Summary, HIPC Technical Meeting*, Paris, October 24, 2002).

acknowledged the need to provide unqualified, firm MDRI financing commitments over a rolling decade, thereby matching the disbursement period of each future IDA replenishment.¹¹ The long-term nature of MDRI financing commitments may present a challenge for some donors who cannot make firm commitments over such a long time period due to legislative or budgetary constraints.

13. **MDRI financing summary.** As of December 31, 2006, donors have provided unqualified, firm financing commitments representing 47 percent of the original projected MDRI costs over the 10-year disbursement horizon of IDA14 (FY07-16) (see [Table A](#) below and enclosed [Table 7](#))¹². Another 26 percent of forgone credit reflows over that horizon are covered by qualified financing commitments, bringing total donor financing commitments to 73 percent of MDRI costs over the 10-year disbursement horizon of IDA14.¹³ Over the four decades of MDRI implementation, aggregate donor financing commitments received are currently equivalent to 66 percent of total estimated MDRI costs of IDA; this includes firm, unqualified financing commitments covering 10 percent of total estimated MDRI costs over four decades. [Chart 3](#) illustrates the time profile of MDRI-related costs of IDA and the current level of donor financing commitments received.

Table A: MDRI Financing Summary – IoCs Received as of December 31, 2006
USD million equiv.

Financing received from IDA donors	Remaining IDA14 Period (FY07-08)		Remainder of First Decade (FY09-16)		Sub-total for First Decade (FY07-16)		Subsequent 3 Decades (FY17-44)		Total MDRI Costs (FY07-44)	
	USDm	in %	USDm	in %	USDm	in %	USDm	in %	USDm	in %
Unqualified Financing	608	75.4%	3,028	43.4%	3,636	46.7%	172	0.6%	3,808	10.4%
Qualified Financing	153	19.0%	1,879	26.9%	2,032	26.1%	18,443	63.9%	20,475	55.9%
Subtotal	762	94.4%	4,907	70.3%	5,668	72.8%	18,615	64.5%	24,283	66.3%
To be committed	45	5.6%	2,069	29.7%	2,114	27.2%	10,236	35.5%	12,351	33.7%
Total	807	100.0%	6,975	100.0%	7,782	100.0%	28,851	100.0%	36,634	100.0%

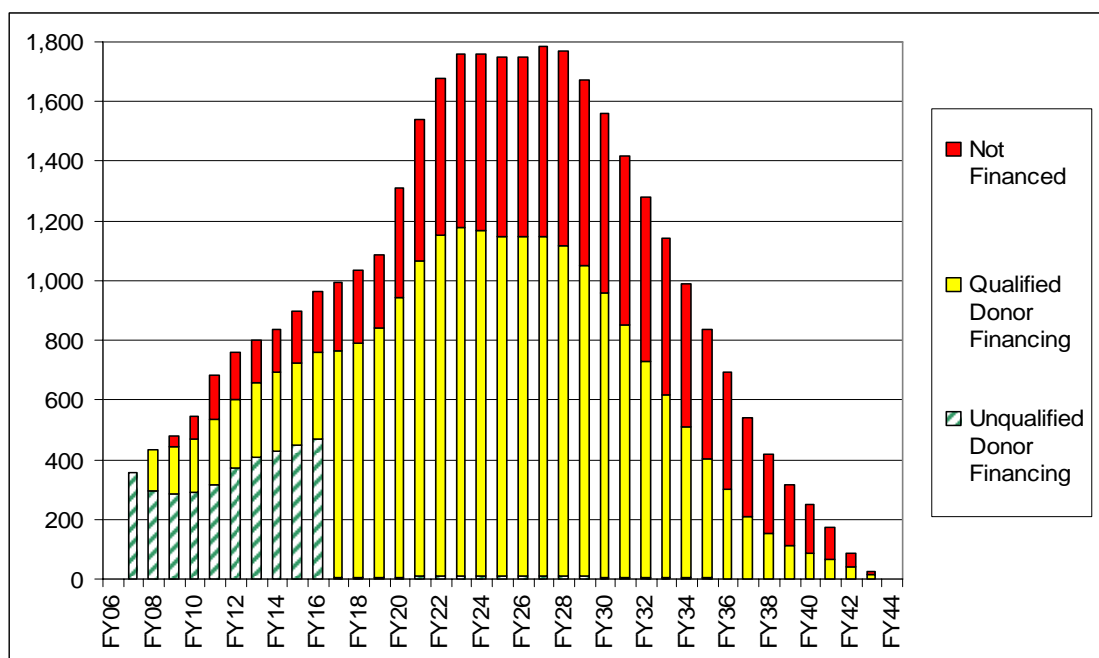
Note: Based on original MDRI cost estimates

¹¹ The annual encashment of donor contributions to finance MDRI-related costs of IDA will occur on a pay-as-you-go basis, matching the actual forgone reflows of IDA during each year.

¹² In addition, in January 2007, IDA received the Instrument of Commitment of the Republic of Korea for an amount of USD equiv. 334 million, including an unqualified commitment for the first 2 years of MDRI financing. In February 2007, Luxembourg unqualified all remaining amounts of its 40-year MDRI commitment.

¹³ Under the MDRI replenishment of IDA, donors agreed that a ‘qualified’ financing commitment could be provided without prior parliamentary or legislative approval. This differs from regular replenishments of IDA where issuance of a ‘qualified’ commitment occurs after required parliamentary or legislative authorization.

**Chart 3: Level of Donor Financing Commitments to the MDRI
(USD million equiv.)**



14. **Donor pledges to the MDRI.** A total of 34 donor countries have pledged to contribute to the MDRI replenishment of IDA. As of December 31, 2006, 28 of these donor countries have provided an Instrument of Commitment for the MDRI replenishment, while the remaining 6 donor countries are in the process of securing required approvals to issue their Instrument of Commitment (see [Tables 8a/b](#)).

15. **Total financing commitments received.** As of December 31, 2006, donors have provided total Instruments of Commitments (qualified and unqualified) to the MDRI for a volume of USD 24.3 billion (see [Table 9b](#)). This compares with total target contributions for all donors of about USD 33.7 billion net of the structural financial gap, based on the original MDRI cost estimates. Donors will need to discuss how to close the structural financing gap (of currently 8.0 percent) under the MDRI replenishment, which represents about USD 2.9 billion based on the original MDRI cost estimates.

16. **Firm financing commitments received.** As of December 31, 2006, donors have provided firm, unqualified financing commitments to the MDRI of USD 3.8 billion over the four decades of MDRI implementation (see [Table 10b](#)). This compares against a volume of irrevocable debt relief provided by IDA under the MDRI of currently USD 28.3 billion (see [Table 11b](#)).

Table 1a

**International Development Association
Total Debt Relief to be Delivered by IDA:
Estimated Volume since Inception of the HIPC Initiative (FY1996-2044)
as of December 31, 2006
(SDReq. millions)**

	Total	HIPC Debt Relief			MDRI Debt Relief	HIPC + MDRI Costs
	Debt Relief by IDA (A+B+C)	Total HIPC (A+B)	Delivered pre-July 2006 (A)	To be Delivered post July 1, 2006 (B)	To be Delivered Post July 1, 2006 (C)	To be Financed by Donors Post July 1, 2006 (B+C)
Completion Point Countries (21)						
Benin	551	83	29	54	468	522
Bolivia	1,225	192	81	111	1,033	1,145
Burkina Faso	782	280	154	127	501	628
Cameroon	758	201	65	135	557	693
Ethiopia	2,453	868	114	753	1,585	2,339
Ghana	3,001	974	137	836	2,027	2,863
Guyana	217	89	49	40	128	168
Honduras	922	114	76	39	808	847
Madagascar	1,504	299	62	237	1,205	1,442
Malawi	1,498	670	76	593	828	1,421
Mauritania	490	116	26	90	373	463
Mali	1,055	195	96	98	860	958
Mozambique	1,591	699	678	20	893	913
Nicaragua	781	258	33	225	523	748
Niger	782	276	43	233	506	739
Rwanda	716	478	56	422	238	660
Senegal	1,372	109	55	54	1,263	1,317
Republic of Sierra Leone	419	157	22	135	262	396
Tanzania	2,689	778	184	594	1,912	2,506
Uganda	2,548	658	317	341	1,890	2,231
Zambia	1,870	596	97	498	1,274	1,773
Sub-Total	27,222	8,088	2,451	5,637	19,134	24,771
Decision Point Countries (9)						
Burundi	535	522	12	510	13	523
Chad	577	72	19	53	506	559
Congo, Republic of	163	48	1	47	115	162
Congo, Democratic Republic of	1,358	695	66	629	662	1,292
Gambia, The	166	21	8	13	145	158
Guinea	902	157	44	113	745	858
Guinea-Bissau	205	121	19	102	84	186
Haiti	327	14	-	14	313	327
Sao Tome and Principe	56	31	5	26	25	51
Sub-Total	4,290	1,681	174	1,507	2,609	4,116
Pre-Decision Point Countries (10)						
Central African Republic	284	211	-	211	72	284
Cote d'Ivoire*	1,298	262	-	262	1,036	1,298
Eritrea	253	140	-	140	113	253
Kyrgyz Republic	395	111	-	111	284	395
Liberia*	56	24	-	24	32	56
Nepal	890	237	-	237	653	890
Somalia*	243	192	-	192	52	243
Sudan*	719	433	-	433	286	719
Togo*	444	117	-	117	327	444
Union of the Comoros	78	46	-	46	32	78
Sub-Total	4,659	1,773	-	1,773	2,887	4,659
Total	36,171	11,542	2,625	8,916	24,629	33,546

* Excludes arrears on principal and charges overdue which will need to be cleared prior to the country reaching decision point under the HIPC Initiative.
Note: Foreign exchange rates are based on MDRI and HIPC FX reference rates.

Table 1b

**International Development Association
Total Debt Relief to be Delivered by IDA:
Estimated Volume since Inception of the HIPC Initiative (FY1996-2044)
as of December 31, 2006
(USDeq. millions)**

	Total	HIPC Debt Relief			MDRI Debt Relief	HIPC + MDRI Costs
	Debt Relief by IDA (A+B+C)	Total HIPC (A+B)	Delivered pre-July 2006 (A)	To be Delivered post July 1, 2006 (B)	To be Delivered Post July 1, 2006 (C)	To be Financed by Donors Post July 1, 2006 (B+C)
<u>Completion Point Countries (21)</u>						
Benin	815	124	44	80	691	771
Bolivia	1,814	287	122	165	1,526	1,692
Burkina Faso	1,160	420	232	188	741	928
Cameroon	1,122	299	99	201	823	1,024
Ethiopia	3,630	1,288	173	1,116	2,342	3,458
Ghana	4,440	1,446	208	1,238	2,994	4,233
Guyana	322	133	74	59	189	248
Honduras	1,366	172	114	58	1,194	1,251
Madagascar	2,225	444	93	351	1,780	2,131
Malawi	2,217	994	115	878	1,223	2,102
Mauritania	725	173	40	133	552	685
Mali	1,562	292	146	146	1,270	1,416
Mozambique	2,374	1,055	1,025	30	1,319	1,349
Nicaragua	1,155	383	50	333	773	1,105
Niger	1,157	410	65	345	748	1,093
Rwanda	1,061	709	84	625	351	976
Senegal	2,030	164	83	81	1,866	1,947
Republic of Sierra Leone	620	233	34	200	387	586
Tanzania	3,981	1,157	277	880	2,824	3,704
Uganda	3,776	984	478	505	2,792	3,298
Zambia	2,768	885	147	738	1,882	2,620
Sub-Total	40,320	12,051	3,702	8,349	28,268	36,617
<u>Decision Point Countries (9)</u>						
Burundi	792	773	19	754	19	773
Chad	854	107	28	78	747	826
Congo, Republic of	241	71	1	70	170	240
Congo, Democratic Republic of	2,010	1,031	100	931	979	1,910
Gambia, The	246	32	12	20	214	234
Guinea	1,334	234	66	167	1,100	1,268
Guinea-Bissau	304	180	29	151	125	275
Haiti	484	21	-	21	462	484
Sao Tome and Principe	84	46	8	38	38	76
Sub-Total	6,348	2,494	263	2,231	3,854	6,085
<u>Pre-Decision Point Countries (10)</u>						
Central African Republic	419	312	-	312	107	419
Cote d'Ivoire*	1,919	388	-	388	1,531	1,919
Eritrea	374	207	-	207	166	374
Kyrgyz Republic	584	164	-	164	420	584
Liberia*	83	36	-	36	47	83
Nepal	1,314	350	-	350	964	1,314
Somalia*	359	283	-	283	76	359
Sudan*	1,062	639	-	639	423	1,062
Togo*	656	174	-	174	483	656
Union of the Comoros	115	68	-	68	47	115
Sub-Total	6,886	2,621	-	2,621	4,264	6,886
Total	53,553	17,166	3,965	13,201	36,387	49,588

* Excludes arrears on principal and charges overdue which will need to be cleared prior to the country reaching decision point under the HIPC Initiative.

Note: Foreign exchange rates are based on MDRI and HIPC FX reference rates.

Table 2a

International Development Association
Estimated HIPC and MDRI Debt Relief by IDA, from IDA14 Period (FY06-44)
By HIPC Country
as of December 31, 2006
(SDReq. million)

Completion Point countries (21)	Actual/Estimated Completion Point Date	Total Debt Relief by IDA	HIPC	MDRI	Principal	Charges	Credit Currency	
			Debt Relief	Debt Relief			SDR	USD
Benin	03/31/2003	527	60	468	474	53	497	31
Bolivia	06/30/2001	1,154	121	1,033	1,033	121	1,114	40
Burkina Faso	04/30/2002	640	139	501	568	72	631	9
Cameroon	04/30/2006	695	137	557	619	76	599	96
Ethiopia	04/30/2004	2,377	792	1,585	2,104	273	2,242	136
Ghana	07/31/2004	2,900	873	2,027	2,597	303	2,821	78
Guyana	12/31/2003	170	42	128	152	17	170	-
Honduras	04/30/2005	853	45	808	756	97	819	34
Madagascar	10/31/2004	1,455	250	1,205	1,297	157	1,350	105
Malawi	08/31/2006	1,438	609	828	1,290	147	1,361	77
Mauritania	03/31/2003	468	95	373	418	50	452	16
Mali	06/30/2002	968	108	860	866	102	930	37
Mozambique	09/30/2001	919	27	893	815	105	919	-
Nicaragua	01/31/2004	756	233	523	666	90	731	25
Niger	06/30/2004	750	244	506	666	84	699	51
Rwanda	06/30/2005	673	435	238	599	74	622	51
Senegal	04/30/2004	1,329	66	1,263	1,190	139	1,253	77
Republic of Sierra Leone	12/31/2006	403	141	262	358	45	269	134
Tanzania	11/30/2001	2,538	626	1,912	2,274	264	2,309	229
Uganda	05/31/2000	2,251	361	1,890	2,007	244	2,251	-
Zambia	04/30/2005	1,797	522	1,274	1,597	200	1,777	19
Sub-total		25,060	5,926	19,134	22,347	2,712	23,816	1,244
Decision Point countries (9)								
Burundi	06/30/2007	529	517	13	477	52		
Chad	12/30/2007	563	57	506	504	59		
Congo, Republic of	12/30/2009	163	48	115	148	15		
Congo, Democratic Republic of	06/30/2007	1,315	652	662	1,166	149		
Gambia, The	05/31/2007	160	15	145	144	15		
Guinea	05/30/2007	867	122	745	784	83		
Guinea-Bissau	12/30/2009	190	106	84	173	17		
Haiti	10/30/2009	327	14	313	300	27		
Sao Tome and Principe	03/31/2007	52	27	25	47	5		
Sub-total		4,166	1,557	2,609	3,743	423		
Pre-decision Point countries (10)								
Central African Republic	06/30/2010	284	211	72	260	24		
Cote d'Ivoire*	05/30/2010	1,298	262	1,036	1,179	119		
Eritrea	12/30/2010	253	140	113	223	30		
Kyrgyz Republic	02/28/2008	395	111	284	357	38		
Liberia*	06/30/2010	56	24	32	52	4		
Nepal	12/30/2010	890	237	653	814	76		
Somalia*	06/30/2010	243	192	52	224	20		
Sudan*	06/30/2010	719	433	286	663	56		
Togo *	10/31/2010	444	117	327	408	36		
Union of the Comoros	05/30/2010	78	46	32	71	7		
Sub-total		4,659	1,773	2,887	4,249	410		
GRAND TOTAL		33,885	9,256	24,629	30,339	3,546		

* Excludes arrears on principal and charges overdue which will need to be cleared prior to the country reaching decision point under the HIPC Initiative.

Note: Foreign exchange rates are based on MDRI and HIPC FX reference rates.

Table 2b

International Development Association
Estimated HIPC and MDRI Debt Relief by IDA, from IDA14 Period (FY06-44)
By HIPC Country
as of December 31, 2006
(USDeq. million)

Completion Point countries (21)	Actual/Estimated Completion Point Date	Total Debt Relief by IDA	HIPC Debt Relief	MDRI Debt Relief	Principal	Charges	Credit Currency	
							SDR	USD
Benin	03/31/2003	780	89	691	701	78	734	45
Bolivia	06/30/2001	1,706	180	1,526	1,528	179	1,647	59
Burkina Faso	04/30/2002	947	206	741	841	106	933	14
Cameroon	04/30/2006	1,027	204	823	915	112	886	141
Ethiopia	04/30/2004	3,516	1,175	2,342	3,112	404	3,316	201
Ghana	07/31/2004	4,288	1,293	2,994	3,840	447	4,172	116
Guyana	12/31/2003	251	62	189	225	26	251	-
Honduras	04/30/2005	1,261	67	1,194	1,117	143	1,210	50
Madagascar	10/31/2004	2,151	370	1,780	1,918	232	1,996	155
Malawi	08/31/2006	2,126	903	1,223	1,909	218	2,012	114
Mauritania	03/31/2003	1,431	160	1,270	1,280	150	1,380	50
Mali	06/30/2002	692	141	552	618	75	666	27
Mozambique	09/30/2001	1,359	40	1,319	1,205	155	1,359	-
Nicaragua	01/31/2004	1,118	345	773	984	134	1,081	37
Niger	06/30/2004	1,109	361	748	985	124	1,034	75
Rwanda	06/30/2005	996	644	351	886	110	921	75
Senegal	04/30/2004	1,965	99	1,866	1,759	206	1,852	113
Republic of Sierra Leone	12/31/2006	596	209	387	529	67	398	198
Tanzania	11/30/2001	3,753	929	2,824	3,363	389	3,415	338
Uganda	05/31/2000	3,327	535	2,792	2,967	360	3,327	-
Zambia	04/30/2005	2,657	774	1,882	2,361	295	2,628	28
Sub-total		37,054	8,786	28,268	33,044	4,010	35,218	1,836
Decision Point countries (9)								
Burundi	06/30/2007	783	765	19	706	77		
Chad	12/30/2007	832	84	747	745	87		
Congo, Republic of	12/30/2009	241	71	170	218	23		
Congo, Democratic Republic of	06/30/2007	1,945	966	979	1,725	220		
Gambia, The	05/31/2007	236	22	214	214	23		
Guinea	05/30/2007	1,281	181	1,100	1,159	123		
Guinea-Bissau	12/30/2009	281	157	125	256	26		
Haiti	10/30/2009	484	21	462	443	40		
Sao Tome and Principe	03/31/2007	77	39	38	69	8		
Sub-total		6,161	2,307	3,854	5,535	626		
Pre-decision Point countries (10)								
Central African Republic	06/30/2010	419	312	107	385	35		
Cote d'Ivoire*	05/30/2010	1,919	388	1,531	1,742	177		
Eritrea	12/30/2010	374	207	166	329	45		
Kyrgyz Republic	02/28/2008	584	164	420	527	57		
Liberia*	06/30/2010	83	36	47	77	6		
Nepal	12/30/2010	1,314	350	964	1,203	112		
Somalia*	06/30/2010	359	283	76	331	29		
Sudan*	06/30/2010	1,062	639	423	979	83		
Togo *	10/31/2010	656	174	483	603	53		
Union of the Comoros	05/30/2010	115	68	47	104	11		
Sub-total		6,886	2,621	4,264	6,279	607		
GRAND TOTAL		50,101	13,714	36,387	44,859	5,242		

* Excludes arrears on principal and charges overdue which will need to be cleared prior to the country reaching decision point under the HIPC Initiative.

Note: Foreign exchange rates are based on MDRI and HIPC FX reference rates.

Table 3a

International Development Association
Estimated HIPC and MDRI Debt Relief by IDA, from IDA14 Period (FY06-44)
By Fiscal Year
as of December 31, 2006
(SDReq. million)

	21 CP HIPCs	9 DP HIPCs	10 pre-DP HIPCs	Total 40 Countries	Of which		Of which	
					HIPC	MDRI	Principal	Charges
FY06	289	50	-	339	339	-	305	35
FY07	557	67	3	626	383	243	455	171
FY08	601	95	66	761	468	293	569	192
FY09	650	111	126	888	562	325	690	198
FY10	686	127	124	938	569	368	742	195
FY11	732	134	156	1,022	560	462	820	202
FY12	782	137	173	1,092	577	515	893	199
FY13	818	146	178	1,143	601	542	951	192
FY14	851	149	180	1,180	614	565	995	185
FY15	871	152	186	1,209	600	608	1,031	178
FY16	890	153	189	1,233	582	651	1,063	170
Subtotal, to FY16	7,727	1,321	1,381	10,430	5,856	4,574	8,514	1,915
FY17	906	153	196	1,256	584	672	1,095	162
FY18	920	154	198	1,272	570	702	1,119	153
FY19	940	154	202	1,296	561	736	1,152	145
FY20	953	154	207	1,315	426	888	1,178	137
FY21	966	155	213	1,334	291	1,043	1,205	129
FY22	981	156	208	1,345	209	1,136	1,226	119
FY23	982	163	202	1,347	157	1,191	1,238	109
FY24	971	163	199	1,334	144	1,190	1,234	100
FY25	961	161	197	1,318	136	1,183	1,228	91
FY26	949	158	194	1,301	116	1,185	1,220	82
FY27	939	156	178	1,272	62	1,209	1,200	72
FY28	918	152	164	1,235	36	1,199	1,171	63
FY29	870	136	149	1,154	21	1,133	1,100	55
FY30	818	119	139	1,077	19	1,058	1,030	47
FY31	747	107	122	976	16	960	937	39
FY32	670	100	110	880	12	868	847	32
FY33	593	89	98	781	9	772	755	26
FY34	513	81	84	678	8	670	658	20
FY35	438	72	65	575	8	567	559	16
FY36	363	59	52	475	6	469	463	12
FY37	290	48	34	372	5	367	363	8
FY38	225	37	24	286	4	281	280	6
FY39	168	33	14	215	1	214	211	4
FY40	126	30	12	168	-	168	166	2
FY41	82	27	8	117	-	117	116	1
FY42	32	22	5	59	-	59	58	0
FY43	11	4	2	17	-	17	17	0
FY44	-	1	1	2	-	2	2	0
Total, FY07-44	25,060	4,166	4,659	33,885	9,256	24,629	30,339	3,546

Note: Foreign exchange rates are based on MDRI and HIPC FX reference rates.

Table 3b

International Development Association
Estimated HIPC and MDRI Debt Relief by IDA, from IDA14 Period (FY06-44)
By Fiscal Year
as of December 31, 2006
(USDeq. million)

	21 CP HIPCs	9 DP HIPCs	10 pre-DP HIPCs	Total 40 Countries	Of which		Of which	
					HIPC	MDRI	Principal	Charges
FY06	437	76	-	513	513	-	460	53
FY07	833	101	4	938	578	359	684	253
FY08	899	142	99	1,140	707	433	855	284
FY09	961	164	186	1,311	831	480	1,019	292
FY10	1,014	188	183	1,385	841	544	1,097	288
FY11	1,081	198	231	1,510	827	683	1,211	299
FY12	1,155	202	256	1,613	852	761	1,319	294
FY13	1,209	216	264	1,689	888	801	1,405	284
FY14	1,257	220	266	1,743	908	835	1,470	273
FY15	1,287	224	275	1,786	887	899	1,523	262
FY16	1,315	227	279	1,821	860	961	1,570	251
Subtotal, to FY16	11,447	1,958	2,043	15,448	8,690	6,757	12,615	2,833
FY17	1,339	227	290	1,856	863	993	1,617	239
FY18	1,359	227	293	1,879	842	1,037	1,653	227
FY19	1,389	228	298	1,915	829	1,087	1,701	214
FY20	1,409	228	306	1,942	630	1,312	1,740	202
FY21	1,427	229	315	1,971	430	1,541	1,781	190
FY22	1,450	230	308	1,988	309	1,679	1,812	176
FY23	1,451	241	299	1,990	231	1,759	1,829	162
FY24	1,435	241	294	1,970	213	1,758	1,822	148
FY25	1,420	237	291	1,948	201	1,747	1,814	134
FY26	1,403	233	287	1,922	172	1,751	1,802	121
FY27	1,387	230	262	1,879	92	1,787	1,772	107
FY28	1,357	225	243	1,824	53	1,772	1,731	93
FY29	1,285	201	220	1,705	31	1,674	1,625	81
FY30	1,209	176	205	1,590	28	1,563	1,521	69
FY31	1,104	157	181	1,442	24	1,418	1,384	58
FY32	989	148	162	1,300	18	1,282	1,252	48
FY33	877	132	144	1,153	13	1,140	1,115	38
FY34	758	120	124	1,002	12	990	972	30
FY35	647	107	96	849	11	838	826	23
FY36	537	88	77	701	8	693	684	17
FY37	428	71	50	549	7	542	537	12
FY38	332	54	36	422	6	416	414	9
FY39	248	49	20	317	1	316	311	6
FY40	186	45	18	249	-	249	245	3
FY41	121	40	12	173	-	173	171	2
FY42	47	33	7	87	-	87	86	1
FY43	16	6	3	25	-	25	25	0
FY44	-	1	2	3	-	3	3	0
Total, FY06-44	37,054	6,161	6,886	50,101	13,714	36,387	44,858	5,242

Note: Foreign exchange rates are based on MDRI and HIPC FX reference rates.

Table 4a

International Development Association
Estimated HIPC and MDRI Debt Relief by IDA, from IDA14 Period (FY06-44)
By HIPC Country and IDA Replenishment
as of December 31, 2006
(SDReq. million)

HIPC and MDRI Relief by IDA	IDA14 FY06-08	IDA15 FY09-11	IDA16 FY12-14	First Decade FY06-16	Total Relief FY06-44
<u>Completion Point countries (21)</u>					
Benin	35	50	57	181	527
Bolivia	60	98	119	368	1,154
Burkina Faso	42	47	62	195	640
Cameroon	36	58	59	199	695
Ethiopia	140	185	219	697	2,377
Ghana	181	255	299	946	2,900
Guyana	10	14	18	55	170
Honduras	39	61	75	230	853
Madagascar	83	129	144	454	1,455
Malawi	86	134	153	481	1,438
Mali	58	84	98	309	968
Mauritania	27	40	46	144	468
Mozambique	42	64	80	250	919
Nicaragua	33	49	61	189	756
Niger	47	62	70	229	750
Rwanda	45	57	66	215	673
Senegal	79	122	136	431	1,329
Sierra Leone	23	28	35	114	403
Tanzania	161	222	268	839	2,538
Uganda	120	179	224	686	2,251
Zambia	101	133	161	516	1,797
Sub-total	1,447	2,069	2,451	7,727	25,060
<u>Decision Point countries (9)</u>					
Burundi	36	54	60	190	529
Chad	17	46	54	157	563
Congo, Rep. of	5	10	15	45	163
Congo, Dem. Rep. of	83	107	122	398	1,315
Gambia, The	8	15	17	52	160
Guinea	43	87	96	291	867
Guinea-Bissau	13	18	21	66	190
Haiti	4	31	41	104	327
Sao Tome and Principe	3	5	6	18	52
Sub-total	212	373	432	1,321	4,166
<u>Pre-decision Point countries (10)</u>					
Central African Republic	9	33	38	106	284
Cote d'Ivoire*	37	99	124	354	1,298
Eritrea	2	11	19	46	253
Kyrgyz Republic	10	29	30	94	395
Liberia*	-	7	9	22	56
Nepal	-	51	109	238	890
Somalia*	-	30	33	84	243
Sudan*	-	93	105	267	719
Togo*	10	47	56	151	444
Union of the Comoros	1	5	8	20	78
Sub-total	68	406	532	1,381	4,659
GRAND TOTAL	1,727	2,847	3,415	10,430	33,885

* Excludes arrears on principal and charges overdue which will need to be cleared prior to the country reaching decision point under the HIPC Initiative.

Note: Foreign exchange rates are based on MDRI and HIPC FX reference rates.

Table 4b

International Development Association
Estimated HIPC and MDRI Debt Relief by IDA, from IDA14 Period (FY06-44)
By HIPC Country and IDA Replenishment
as of December 31, 2006
(USDeq. million)

HIPC and MDRI Relief by IDA	IDA14 FY06-08	IDA15 FY09-11	IDA16 FY12-14	First Decade FY06-16	Total Relief FY06-44
<u>Completion Point countries (21)</u>					
Benin	52	74	84	268	780
Bolivia	90	144	176	545	1,706
Burkina Faso	63	69	91	289	947
Cameroon	53	86	86	294	1,027
Ethiopia	210	273	323	1,033	3,516
Ghana	271	376	442	1,402	4,288
Guyana	15	21	26	81	251
Honduras	58	89	111	341	1,261
Madagascar	124	190	213	672	2,151
Malawi	130	198	227	713	2,126
Mali	87	124	144	457	1,431
Mauritania	40	58	67	213	692
Mozambique	62	95	119	369	1,359
Nicaragua	49	72	91	280	1,118
Niger	71	92	103	339	1,109
Rwanda	69	84	98	319	996
Senegal	118	180	201	638	1,965
Sierra Leone	34	41	52	169	596
Tanzania	241	328	397	1,243	3,753
Uganda	179	265	331	1,015	3,327
Zambia	152	196	239	766	2,657
Sub-total	2,168	3,056	3,621	11,447	37,054
<u>Decision Point countries (9)</u>					
Burundi	54	79	88	282	783
Chad	26	68	79	232	832
Congo, Rep. of	8	15	23	67	241
Congo, Dem. Rep. of	125	158	180	590	1,945
Gambia, The	12	23	25	77	236
Guinea	64	128	142	431	1,281
Guinea-Bissau	19	26	32	98	281
Haiti	7	46	60	154	484
Sao Tome and Principe	5	7	9	27	77
Sub-total	319	551	638	1,958	6,161
<u>Pre-decision Point countries (10)</u>					
Central African Republic	14	49	56	157	419
Cote d'Ivoire*	56	147	183	524	1,919
Eritrea	2	17	29	68	374
Kyrgyz Republic	15	42	45	139	584
Liberia*	-	11	13	32	83
Nepal	-	76	161	352	1,314
Somalia*	-	44	48	124	359
Sudan*	-	137	156	395	1,062
Togo*	15	69	83	223	656
Union of the Comoros	2	7	12	29	115
Sub-total	103	600	786	2,043	6,886
GRAND TOTAL	2,590	4,206	5,045	15,448	50,101

* Excludes arrears on principal and charges overdue which will need to be cleared prior to the country reaching decision point under the HIPC Initiative.

Note: Foreign exchange rates are based on MDRI and HIPC FX reference rates.

Table 5a

International Development Association
Estimated HIPC Debt Relief by IDA, from IDA14 Period (FY06-44)
By HIPC Country and IDA Replenishment
as of December 31, 2006
(SDReq. million)

HIPC Relief by IDA	IDA14 FY06-08	IDA15 FY09-11	IDA16 FY12-14	First Decade FY06-16	Total Relief FY06-44
<u>Completion Point countries (21)</u>					
Benin	17	20	22	60	60
Bolivia	31	40	46	121	121
Burkina Faso	26	22	28	97	139
Cameroon	18	26	26	91	137
Ethiopia	124	155	183	590	792
Ghana	117	142	162	535	873
Guyana	6	7	8	27	42
Honduras	19	24	2	45	45
Madagascar	42	51	54	184	250
Malawi	72	111	127	398	609
Mali	29	34	38	108	108
Mauritania	16	19	21	69	95
Mozambique	21	6	-	27	27
Nicaragua	25	31	35	119	233
Niger	37	44	49	164	244
Rwanda	42	52	60	195	435
Senegal	39	27	-	66	66
Sierra Leone	19	21	25	85	141
Tanzania	102	120	136	452	626
Uganda	60	70	82	272	361
Zambia	77	85	100	339	522
Sub-total	939	1,104	1,205	4,043	5,926
<u>Decision Point countries (9)</u>					
Burundi	35	51	58	184	517
Chad	13	18	19	57	57
Congo, Rep. of	5	7	9	29	48
Congo, Dem. Rep. of	77	88	97	329	652
Gambia, The	5	6	3	15	15
Guinea	29	37	40	122	122
Guinea-Bissau	13	15	16	55	106
Haiti	4	10	-	14	14
Sao Tome and Principe	3	4	5	14	27
Sub-total	185	237	247	819	1,557
<u>Pre-decision Point countries (10)</u>					
Central African Republic	9	31	32	94	211
Cote d'Ivoire*	37	83	63	230	262
Eritrea	2	11	17	42	140
Kyrgyz Republic	8	17	19	59	111
Liberia*	-	6	5	14	24
Nepal	-	44	64	155	237
Somalia*	-	29	29	76	192
Sudan*	-	82	74	205	433
Togo*	10	42	30	102	117
Union of the Comoros	1	5	7	18	46
Sub-total	66	350	340	994	1,773
GRAND TOTAL	1,190	1,691	1,792	5,856	9,256

* Excludes arrears on principal and charges overdue which will need to be cleared prior to the country reaching decision point under the HIPC Initiative.

Note: Foreign exchange rates are based on MDRI and HIPC FX reference rates.

Table 5b

International Development Association
Estimated HIPC Debt Relief by IDA, from IDA14 Period (FY06-44)
By HIPC Country and IDA Replenishment
as of December 31, 2006
(USDeq. million)

HIPC Relief by IDA	IDA14 FY06-08	IDA15 FY09-11	IDA16 FY12-14	First Decade FY06-16	Total Relief FY06-44
<u>Completion Point countries (21)</u>					
Benin	26	29	33	89	89
Bolivia	47	59	68	180	180
Burkina Faso	40	33	42	145	206
Cameroon	27	39	38	134	204
Ethiopia	187	229	270	876	1,175
Ghana	176	209	240	795	1,293
Guyana	9	10	13	40	62
Honduras	29	35	3	67	67
Madagascar	64	75	79	273	370
Malawi	108	164	187	590	903
Mali	45	51	56	160	160
Mauritania	24	27	30	103	141
Mozambique	31	9	-	40	40
Nicaragua	38	45	52	176	345
Niger	55	65	73	243	361
Rwanda	64	76	89	290	644
Senegal	59	40	-	99	99
Sierra Leone	29	31	36	126	209
Tanzania	155	177	202	671	929
Uganda	90	104	122	403	535
Zambia	116	125	148	503	774
Sub-total	1,419	1,632	1,780	6,004	8,786
<u>Decision Point countries (9)</u>					
Burundi	53	76	85	273	765
Chad	20	27	29	84	84
Congo, Rep. of	8	11	13	43	71
Congo, Dem. Rep. of	116	129	144	488	966
Gambia, The	8	9	5	22	22
Guinea	44	55	59	181	181
Guinea-Bissau	19	23	24	82	157
Haiti	7	15	-	21	21
Sao Tome and Principe	4	5	7	21	39
Sub-total	279	350	365	1,216	2,307
<u>Pre-decision Point countries (10)</u>					
Central African Republic	14	46	48	139	312
Cote d'Ivoire*	56	123	92	341	388
Eritrea	2	16	25	62	207
Kyrgyz Republic	12	25	28	87	164
Liberia*	-	9	7	21	36
Nepal	-	65	95	229	350
Somalia*	-	42	42	112	283
Sudan*	-	121	110	303	639
Togo*	15	63	44	151	174
Union of the Comoros	2	7	10	26	68
Sub-total	100	517	502	1,470	2,621
GRAND TOTAL	1,798	2,499	2,647	8,690	13,714

* Excludes arrears on principal and charges overdue which will need to be cleared prior to the country reaching decision point under the HIPC Initiative.

Note: Foreign exchange rates are based on MDRI and HIPC FX reference rates.

Table 6a

International Development Association
Estimated MDRI Debt Relief by IDA, from July 2006 (FY07-44)
By HIPC Country and IDA Replenishment
as of December 31, 2006
(SDRReq. million)

MDRI Relief by IDA	IDA14 FY07-08	IDA15 FY09-11	IDA16 FY12-14	First Decade FY07-16	Total Relief FY07-44
<u>Completion Point countries (21)</u>					
Benin	18	30	35	122	468
Bolivia	29	57	73	247	1,033
Burkina Faso	16	25	33	98	501
Cameroon	18	32	33	108	557
Ethiopia	16	30	36	106	1,585
Ghana	64	113	137	411	2,027
Guyana	4	7	9	28	128
Honduras	20	37	73	185	808
Madagascar	41	77	90	270	1,205
Malawi	14	23	27	83	828
Mali	29	50	60	201	860
Mauritania	11	21	25	75	373
Mozambique	21	58	80	223	893
Nicaragua	7	18	26	70	523
Niger	11	18	21	65	506
Rwanda	3	5	6	19	238
Senegal	40	95	136	365	1,263
Sierra Leone	4	7	11	29	262
Tanzania	59	102	132	387	1,912
Uganda	60	109	141	414	1,890
Zambia	24	48	61	178	1,274
Sub-total	507	964	1,246	3,684	19,134
<u>Decision Point countries (9)</u>					
Burundi	1	3	2	6	13
Chad	4	28	34	100	506
Congo, Rep. of	-	3	7	16	115
Congo, Dem. Rep. of	6	19	24	69	662
Gambia, The	2	9	14	37	145
Guinea	14	49	56	169	745
Guinea-Bissau	-	2	5	11	84
Haiti	-	21	41	90	313
Sao Tome and Principe	0	1	2	4	25
Sub-total	27	136	184	502	2,609
<u>Pre-decision Point countries (10)</u>					
Central African Republic	-	2	6	12	72
Cote d'Ivoire*	-	16	61	124	1,036
Eritrea	-	0	2	4	113
Kyrgyz Republic	2	12	11	35	284
Liberia*	-	1	4	7	32
Nepal	-	7	45	84	653
Somalia*	-	1	4	8	52
Sudan*	-	11	31	62	286
Togo*	-	4	26	49	327
Union of the Comoros	-	0	1	2	32
Sub-total	2	56	192	387	2,887
GRAND TOTAL	536	1,156	1,623	4,574	24,629

* Excludes arrears on principal and charges overdue which will need to be cleared prior to the country reaching decision point under the HIPC Initiative.

Note: Foreign exchange rates are based on MDRI and HIPC FX reference rates.

Table 6b

International Development Association
Estimated MDRI Debt Relief by IDA, from July 2006 (FY07-44)
By HIPC Country and IDA Replenishment
as of December 31, 2006
(USDeq. million)

MDRI Relief by IDA	IDA14 FY07-08	IDA15 FY09-11	IDA16 FY12-14	First Decade FY07-16	Total Relief FY07-44
<u>Completion Point countries (21)</u>					
Benin	26	45	51	180	691
Bolivia	43	85	109	365	1,526
Burkina Faso	23	36	49	145	741
Cameroon	26	48	49	160	823
Ethiopia	23	44	53	157	2,342
Ghana	95	167	202	607	2,994
Guyana	6	11	14	41	189
Honduras	29	54	108	274	1,194
Madagascar	60	114	133	399	1,780
Malawi	21	35	40	123	1,223
Mali	43	73	88	297	1,270
Mauritania	16	31	37	110	552
Mozambique	31	86	119	329	1,319
Nicaragua	11	27	39	104	773
Niger	16	27	31	96	748
Rwanda	5	8	9	29	351
Senegal	59	140	201	539	1,866
Sierra Leone	6	11	16	43	387
Tanzania	87	151	195	572	2,824
Uganda	89	161	209	611	2,792
Zambia	36	71	90	262	1,882
Sub-total	749	1,424	1,841	5,443	28,268
<u>Decision Point countries (9)</u>					
Burundi	1	4	3	9	19
Chad	5	41	51	148	747
Congo, Rep. of	-	4	10	23	170
Congo, Dem. Rep. of	9	28	36	102	979
Gambia, The	4	13	20	55	214
Guinea	20	73	83	250	1,100
Guinea-Bissau	-	4	8	16	125
Haiti	-	31	60	132	462
Sao Tome and Principe	1	2	2	6	38
Sub-total	40	201	273	742	3,854
<u>Pre-decision Point countries (10)</u>					
Central African Republic	-	3	9	18	107
Cote d'Ivoire*	-	24	91	183	1,531
Eritrea	-	1	3	6	166
Kyrgyz Republic	3	18	17	52	420
Liberia*	-	2	5	11	47
Nepal	-	11	66	124	964
Somalia*	-	2	6	12	76
Sudan*	-	16	46	91	423
Togo*	-	7	39	72	483
Union of the Comoros	-	0	2	3	47
Sub-total	3	82	284	572	4,264
GRAND TOTAL	792	1,708	2,397	6,757	36,387

* Excludes arrears on principal and charges overdue which will need to be cleared prior to the country reaching decision point under the HIPC Initiative.

Note: Foreign exchange rates are based on MDRI and HIPC FX reference rates.

Table 7

**International Development Association
MDRI Financing Summary
IoCs Received as of December 31, 2006*
(SDR equivalent millions)**

Financing received from IDA donors	Remaining IDA14 Period (FY07-08)		Remainder of First Decade (FY09-16)		Sub-total for First Decade (FY07-16)		Subsequent 3 Decades (FY17-44)		Total MDRI Costs (FY07-44)	
	SDRm	in %	SDRm	in %	SDRm	in %	SDRm	in %	SDRm	in %
Unqualified Financing	412	75.4%	2,049	43.4%	2,461	46.7%	116	0.6%	2,577	10.4%
Qualified Financing	104	19.0%	1,272	26.9%	1,375	26.1%	12,484	63.9%	13,859	55.9%
Subtotal	515	94.4%	3,321	70.3%	3,837	72.8%	12,600	64.5%	16,437	66.3%
To be committed	31	5.6%	1,400	29.7%	1,431	27.2%	6,929	35.5%	8,360	33.7%
Total	546	100.0%	4,721	100.0%	5,268	100.0%	19,529	100.0%	24,796	100.0%

* Based on original MDRI cost estimates

Table 8a

**International Development Association
Donor Pledges to the MDRI*
as of December 31, 2006
(SDR millions)**

Donors	Remaining IDA14 Period (FY07-08)			Remainder of First Decade (FY09-16)			Subsequent 3 Decades (FY17-44)			Grand Total (FY07-44)	
	Qualified	Unqualified	Total	Qualified	Unqualified	Total	Qualified	Unqualified	Total	Amount	Share
IoCs Received To Date											
Australia	-	8.8	8.8	-	75.9	75.9	-	-	-	84.7	0.34%
Austria	-	4.3	4.3	-	36.8	36.8	-	-	-	41.1	0.17%
Belgium	-	8.5	8.5	-	-	-	-	-	-	8.5	0.03%
Canada	-	19.9	19.9	49.7	-	49.7	-	-	-	69.5	0.28%
Czech Republic	-	0.3	0.3	-	2.4	2.4	9.8	-	9.8	12.4	0.05%
Denmark	-	9.5	9.5	-	82.3	82.3	340.5	-	340.5	432.4	1.74%
Finland	-	3.6	3.6	-	31.3	31.3	-	-	-	34.9	0.14%
France	-	30.9	30.9	-	291.3	291.3	1,204.9	-	1,204.9	1,527.2	6.16%
Germany	-	46.5	46.5	-	467.3	467.3	1,933.0	-	1,933.0	2,446.8	9.87%
Greece	-	0.7	0.7	-	6.0	6.0	24.9	-	24.9	31.7	0.13%
Iceland	-	0.2	0.2	-	1.9	1.9	-	-	-	2.1	0.01%
Ireland	-	1.1	1.1	-	9.4	9.4	-	38.8	38.8	49.3	0.20%
Italy	-	19.8	19.8	187.0	-	187.0	773.3	-	773.3	980.1	3.95%
Japan	-	71.6	71.6	-	-	-	-	-	-	71.6	0.29%
Luxembourg	-	0.5	0.5	4.7	-	4.7	19.5	-	19.5	24.8	0.10%
Netherlands	-	15.7	15.7	-	135.5	135.5	560.3	-	560.3	711.5	2.87%
New Zealand	-	0.7	0.7	-	6.3	6.3	25.9	-	25.9	32.8	0.13%
Norway	5.2	3.9	9.2	79.2	-	79.2	-	-	-	88.4	0.36%
Poland	-	0.2	0.2	-	1.4	1.4	5.9	-	5.9	7.5	0.03%
Portugal	-	1.2	1.2	-	10.4	10.4	-	43.1	43.1	54.7	0.22%
Russian Fed.	-	0.5	0.5	-	4.2	4.2	-	17.2	17.2	21.9	0.09%
Slovak Republic	-	0.1	0.1	-	-	-	-	-	-	0.1	0.00%
Slovenia	-	0.2	0.2	1.4	-	1.4	5.9	-	5.9	7.4	0.03%
South Africa	-	0.5	0.5	-	4.2	4.2	-	17.2	17.2	21.9	0.09%
Spain	-	10.8	10.8	-	93.8	93.8	387.9	-	387.9	492.6	1.99%
Sweden	-	15.8	15.8	-	136.5	136.5	564.7	-	564.7	717.0	2.89%
United Kingdom	-	77.1	77.1	-	652.5	652.5	2,698.9	-	2,698.9	3,428.4	13.83%
United States	98.5	58.9	157.4	949.8	-	949.8	3,928.2	-	3,928.2	5,035.4	20.31%
Sub-total	103.7	411.8	515.4	1,271.8	2,049.3	3,321.1	12,483.6	116.4	12,600.0	16,436.5	66.29%
IoCs Not Yet Received											
Hungary	-	0.3	0.3	2.8	-	2.8	-	-	-	3.1	0.01%
Korea, Rep. of	-	5.5	5.5	-	47.4	47.4	196.1	-	196.1	249.0	1.00%
Kuwait	-	0.8	0.8	-	7.3	7.3	30.2	-	30.2	38.3	0.15%
Saudi Arabia	-	2.2	2.2	-	5.0	5.0	-	-	-	7.2	0.03%
Singapore	-	0.8	0.8	-	6.7	6.7	27.7	-	27.7	35.2	0.14%
Switzerland	14.6	-	14.6	-	-	-	-	-	-	14.6	0.06%
Sub-total	14.6	9.6	24.2	2.8	66.4	69.2	254.0	-	254.0	347.5	1.40%
Total Pledges	118.3	421.3	539.7	1,274.6	2,115.7	3,390.4	12,737.6	116.4	12,854.0	16,784.0	67.69%
Financing gap			6.5			1,331.0			6,674.8	8,012.4	32.31%
Total MDRI Costs of IDA			546.2			4,721.4			19,528.8	24,796.4	100.00%

* Based on original MDRI cost estimates
Note: Totals may not add up due to rounding.

Table 8b

**International Development Association
Donor Pledges to the MDRI***
as of December 31, 2006
(National Currency millions)

Donors	Curr.	Remaining IDA14 Period (FY07-08)			Remainder of First Decade (FY09-16)			Subsequent 3 Decades (FY17-44)			Grand Total (FY07-44)	
		Qualified	Unqualified	Total	Qualified	Unqualified	Total	Qualified	Unqualified	Total	Amount	Share
IoCs Received To Date												
Australia	AUD	-	17.0	17.0	-	146.8	146.8	-	-	-	163.8	0.34%
Austria	SDR	-	4.3	4.3	-	36.8	36.8	-	-	-	41.1	0.17%
Belgium	EUR	-	10.1	10.1	-	-	-	-	-	-	10.1	0.03%
Canada	CAD	-	35.9	35.9	89.8	-	89.8	-	-	-	125.8	0.28%
Czech Republic	CZK	-	9.7	9.7	-	84.1	84.1	347.9	-	347.9	441.7	0.05%
Denmark	DKK	-	84.5	84.5	-	730.4	730.4	3,021.1	-	3,021.1	3,836.1	1.74%
Finland	EUR	-	4.3	4.3	-	37.2	37.2	-	-	-	41.5	0.14%
France	EUR	-	36.8	36.8	-	346.8	346.8	1,434.5	-	1,434.5	1,818.2	6.16%
Germany	SDR	-	46.5	46.5	-	467.3	467.3	1,933.0	-	1,933.0	2,446.8	9.87%
Greece	EUR	-	0.8	0.8	-	7.2	7.2	29.7	-	29.7	37.7	0.13%
Iceland	ISK	-	22.8	22.8	-	178.2	178.2	-	-	-	200.9	0.01%
Ireland	EUR	-	1.3	1.3	-	11.2	11.2	-	46.2	46.2	58.6	0.20%
Italy	EUR	-	23.5	23.5	222.6	-	222.6	920.7	-	920.7	1,166.8	3.95%
Japan	JPY	-	11,564.2	11,564.2	-	-	-	-	-	-	11,564.2	0.29%
Luxembourg	EUR	-	0.7	0.7	5.6	-	5.6	23.3	-	23.3	29.5	0.10%
Netherlands	EUR	-	18.7	18.7	-	161.3	161.3	667.1	-	667.1	847.0	2.87%
New Zealand	NZD	-	1.5	1.5	-	13.1	13.1	54.3	-	54.3	68.9	0.13%
Norway	NOK	49.6	37.4	86.9	751.5	-	751.5	-	-	-	838.4	0.36%
Poland	PLN	-	0.9	0.9	-	6.9	6.9	28.5	-	28.5	36.2	0.03%
Portugal	EUR	-	1.4	1.4	-	12.4	12.4	-	51.3	51.3	65.2	0.22%
Russian Fed.	SDR	-	0.5	0.5	-	4.2	4.2	-	17.2	17.2	21.9	0.09%
Slovak Republic	SKK	-	3.3	3.3	-	-	-	-	-	-	3.3	0.00%
Slovenia	EUR	-	0.2	0.2	1.7	-	1.7	7.0	-	7.0	8.9	0.03%
South Africa	ZAR	-	4.6	4.6	-	39.8	39.8	-	164.6	164.6	209.0	0.09%
Spain	EUR	-	12.9	12.9	-	111.7	111.7	461.8	-	461.8	586.4	1.99%
Sweden	SEK	-	174.5	174.5	-	1,508.6	1,508.6	6,239.8	-	6,239.8	7,922.9	2.89%
United Kingdom	GBP	-	62.5	62.5	-	529.1	529.1	2,188.4	-	2,188.4	2,780.0	13.83%
United States	USD	145.5	87.0	232.5	1,403.3	-	1,403.3	5,803.5	-	5,803.5	7,439.3	20.31%
IoCs Not Yet Received												
Hungary	HUF	-	95.7	95.7	826.9	-	826.9	-	-	-	922.5	0.01%
Korea, Rep. of	KRW	-	8,252.7	8,252.7	-	71,338.3	71,338.3	295,069.2	-	295,069.2	374,660.2	1.00%
Kuwait	KWD	-	0.4	0.4	-	3.2	3.2	13.0	-	13.0	16.5	0.15%
Saudi Arabia	USD	-	3.2	3.2	-	7.4	7.4	-	-	-	10.6	0.03%
Singapore	SGD	-	1.9	1.9	-	16.5	16.5	68.3	-	68.3	86.7	0.14%
Switzerland	CHF	27.0	-	27.0	-	-	-	-	-	-	27.0	0.06%

* Based on original MDRI cost estimates

Table 9a

International Development Association
Donor Financing of IDA's Forgone Reflows due to the MDRI:
Total Financing Commitments Received*
as of December 31, 2006
(SDR equivalent millions)

Donors	Shares	A			B	A-B
		Financing Commitments Received			Target Contributions, Based on Original MDRI Cost Estimates	Surplus/ (Shortfall) vs. Original Costs
		Unqualified	Qualified	Total Received		
SDRm	SDRm	SDRm	SDRm (1)	SDRm		
Australia	1.49%	84.71	-	84.71	369.29	(284.58)
Austria	0.78%	41.08	-	41.08	193.41	(152.33)
Belgium	1.55%	8.47	-	8.47	384.34	(375.88)
Canada	3.90%	19.87	49.66	69.53	968.05	(898.53)
Czech Republic	0.05%	2.63	9.76	12.40	12.40	0.00
Denmark	1.74%	91.85	340.52	432.37	432.37	0.00
Finland	0.61%	34.88	-	34.88	152.05	(117.17)
France	6.16%	322.25	1,204.94	1,527.19	1,527.19	0.00
Germany	9.87%	513.80	1,933.00	2,446.80	2,446.80	0.00
Greece	0.13%	6.73	24.93	31.66	31.66	0.00
Hungary	0.06%	-	-	-	14.73	(14.73)
Iceland	0.04%	2.13	-	2.13	9.94	(7.81)
Ireland	0.20%	49.26	-	49.26	49.26	0.00
Italy	3.95%	19.76	960.30	980.07	980.07	0.00
Japan	13.17%	71.64	-	71.64	3,265.40	(3,193.75)
Korea, Republic of	0.91%	-	-	-	226.16	(226.16)
Kuwait	0.14%	-	-	-	34.79	(34.79)
Luxembourg	0.10%	0.55	24.25	24.80	24.80	0.00
Netherlands	2.87%	151.14	560.34	711.49	711.49	0.00
New Zealand	0.13%	6.97	25.86	32.84	32.84	0.00
Norway	1.68%	3.94	84.42	88.36	415.95	(327.59)
Poland	0.03%	1.60	5.86	7.46	7.46	0.00
Portugal	0.22%	54.73	-	54.73	54.73	0.00
Russian Federation	0.09%	21.89	-	21.89	21.89	0.00
Saudi Arabia	0.39%	-	-	-	97.81	(97.81)
Singapore	0.14%	-	-	-	35.21	(35.21)
Slovak Republic	0.01%	0.07	-	0.07	3.27	(3.20)
Slovenia	0.03%	0.17	7.27	7.44	7.44	0.00
South Africa	0.09%	21.89	-	21.89	21.89	0.00
Spain	1.99%	104.64	387.93	492.57	492.57	0.00
Sweden	2.89%	152.31	564.65	716.96	716.96	0.00
Switzerland	2.44%	-	-	-	603.93	(603.93)
United Kingdom	13.83%	729.57	2,698.87	3,428.44	3,428.44	0.00
United States	20.31%	58.91	4,976.53	5,035.43	5,035.44	0.00
Sub-total					22,810.03	
Structural gap	8.01%				<u>1,986.39</u>	
TOTAL	100.00%	2,577.45	13,859.10	16,436.55	24,796.42	(6,373.47)

* Based on original MDRI cost estimates

Note: Totals may not add up due to rounding.

Exchange rates used: MDRI Replenishment Foreign Exchange Rate, USD/SDR: 1.47738

(1) According to "Additions to IDA Resources : Financing the Multilateral Debt Relief Initiative, March 28,2006"

(2) Source: Resource Mobilization Department (FRM)

Table 9b

International Development Association
Donor Financing of IDA's Forgone Reflows due to the MDRI:
Total Financing Commitments Received*
as of December 31, 2006
(USD equivalent millions)

Donors	Shares	A			B	A-B
		Financing Commitments Received			Target Contributions, Based on Original MDRI Cost Estimates	Surplus/ (Shortfall) vs. Original Costs
		Unqualified	Qualified	Total Received		
USDm	USDm	USDm	USDm (1)	USDm		
Australia	1.49%	125.16	-	125.16	545.58	(420.43)
Austria	0.78%	60.69	-	60.69	285.74	(225.05)
Belgium	1.55%	12.51	-	12.51	567.82	(555.31)
Canada	3.90%	29.36	73.36	102.72	1,430.18	(1,327.46)
Czech Republic	0.05%	3.89	14.43	18.32	18.32	0.00
Denmark	1.74%	135.70	503.07	638.77	638.77	0.00
Finland	0.61%	51.54	-	51.54	224.64	(173.10)
France	6.16%	476.09	1,780.15	2,256.24	2,256.24	0.00
Germany	9.87%	759.08	2,855.78	3,614.85	3,614.85	0.00
Greece	0.13%	9.94	36.83	46.77	46.78	0.00
Hungary	0.06%	-	-	-	21.76	(21.76)
Iceland	0.04%	3.15	-	3.15	14.69	(11.54)
Ireland	0.20%	72.77	-	72.77	72.77	0.00
Italy	3.95%	29.20	1,418.73	1,447.93	1,447.94	0.00
Japan	13.17%	105.84	-	105.84	4,824.23	(4,718.39)
Korea, Republic of	0.91%	-	-	-	334.13	(334.13)
Kuwait	0.14%	-	-	-	51.40	(51.40)
Luxembourg	0.10%	0.81	35.83	36.63	36.63	0.00
Netherlands	2.87%	223.30	827.84	1,051.14	1,051.14	0.00
New Zealand	0.13%	10.30	38.21	48.52	48.51	0.00
Norway	1.68%	5.82	124.73	130.54	614.51	(483.97)
Poland	0.03%	2.36	8.65	11.01	11.02	0.00
Portugal	0.22%	80.86	-	80.86	80.86	0.00
Russian Federation	0.09%	32.34	-	32.34	32.34	0.00
Saudi Arabia	0.39%	-	-	-	144.51	(144.51)
Singapore	0.14%	-	-	-	52.03	(52.03)
Slovak Republic	0.01%	0.11	-	0.11	4.84	(4.73)
Slovenia	0.03%	0.25	10.75	10.99	10.99	0.00
South Africa	0.09%	32.34	-	32.34	32.34	0.00
Spain	1.99%	154.59	573.12	727.71	727.71	0.00
Sweden	2.89%	225.02	834.21	1,059.23	1,059.22	0.00
Switzerland	2.44%	-	-	-	892.23	(892.23)
United Kingdom	13.83%	1,077.85	3,987.26	5,065.11	5,065.11	(0.01)
United States	20.31%	87.03	7,352.22	7,439.25	7,439.25	0.00
Sub-total					33,699.08	
Structural gap	8.01%				<u>2,934.65</u>	
TOTAL	100.00%	3,807.88	20,475.16	24,283.03	36,633.73	(9,416.04)

* Based on original cost estimates

Note: Totals may not add up due to rounding.

Exchange rates used: MDRI Replenishment Foreign Exchange Rate, USD/SDR: 1.47738

(1) According to "Additions to IDA Resources : Financing the Multilateral Debt Relief Initiative, March 28,2006"

(2) Source: Resource Mobilization Department (FRM)

Table 9c

**International Development Association
Donor Financing of IDA's Forgone Reflows due to the MDRI:
Total Financing Commitments Received***
as of December 31, 2006
(National Currency millions)

Donors	Shares	Currency	A			B	A-B
			Financing Commitments Received			Target Contributions, Based on Original MDRI Cost Estimates	Surplus/ (Shortfall) vs. Original Costs
			<u>Unqualified</u> millions	<u>Qualified</u> millions	<u>Total Received</u> millions	millions (1)	million
Australia	1.49%	AUD	163.76	-	163.76	713.86	(550.10)
Austria	0.78%	SDR	41.08	-	41.08	193.41	(152.33)
Belgium	1.55%	EUR	10.08	-	10.08	457.57	(447.49)
Canada	3.90%	CAD	35.94	89.82	125.76	1,751.00	(1,625.24)
Czech Republic	0.05%	CZK	93.83	347.86	441.69	441.69	0.00
Denmark	1.74%	DKK	814.92	3,021.14	3,836.06	3,836.06	0.00
Finland	0.61%	EUR	41.53	-	41.53	181.02	(139.49)
France	6.16%	EUR	383.65	1,434.50	1,818.15	1,818.15	0.00
Germany	9.87%	SDR	513.80	1,933.00	2,446.80	2,446.80	0.00
Greece	0.13%	EUR	8.01	29.68	37.69	37.69	0.00
Hungary	0.06%	HUF	-	-	-	4,342.51	(4,342.51)
Iceland	0.04%	ISK	200.92	-	200.92	937.88	(736.96)
Ireland	0.20%	EUR	58.64	-	58.64	58.64	0.00
Italy	3.95%	EUR	23.53	1,143.26	1,166.79	1,166.79	0.00
Japan	13.17%	JPY	11,564.24	-	11,564.24	527,091.41	(515,527.17)
Korea, Republic of	0.91%	KRW	-	-	-	340,268.52	(340,268.52)
Kuwait	0.14%	KWD	-	-	-	15.01	(15.01)
Luxembourg	0.10%	EUR	0.65	28.87	29.52	29.52	0.00
Netherlands	2.87%	EUR	179.94	667.10	847.04	847.04	0.00
New Zealand	0.13%	NZD	14.64	54.29	68.93	68.93	0.00
Norway	1.68%	NOK	37.36	801.05	838.41	3,946.66	(3,108.25)
Poland	0.03%	PLN	7.76	28.45	36.21	36.21	0.00
Portugal	0.22%	EUR	65.16	-	65.16	65.16	0.00
Russian Federation	0.09%	SDR	21.89	-	21.89	21.89	0.00
Saudi Arabia	0.39%	USD	-	-	-	144.51	(144.51)
Singapore	0.14%	SGD	-	-	-	86.68	(86.68)
Slovak Republic	0.01%	SKK	3.33	-	3.33	151.14	(147.81)
Slovenia	0.03%	EUR	0.20	8.66	8.86	8.86	0.00
South Africa	0.09%	ZAR	208.98	-	208.98	208.98	0.00
Spain	1.99%	EUR	124.57	461.84	586.41	586.41	0.00
Sweden	2.89%	SEK	1,683.10	6,239.78	7,922.88	7,922.88	0.00
Switzerland	2.44%	CHF	-	-	-	1,113.24	(1,113.24)
United Kingdom	13.83%	GBP	591.57	2,188.38	2,779.95	2,779.95	0.00
United States	20.31%	USD	87.03	7,352.22	7,439.25	7,439.25	0.00
Sub-total							
Structural gap	8.01%						
TOTAL	100.00%						

* Based on original MDRI cost estimates

Note: Totals may not add up due to rounding.

(1) According to "Additions to IDA Resources : Financing the Multilateral Debt Relief Initiative, March 28,2006"

(2) Source: Resource Mobilization Department (FRM)

Table 10a

International Development Association
Donor Financing of IDA's Forgone Reflows due to the MDRI:
Firm Financing Commitments Received (Unqualified IoCs), by Period
as of December 31, 2006
(SDR equivalent millions)

Donors	Shares	Firm Financing Received (Unqualified IoCs)				Contributions, Based on Original MDRI Cost Estimates				Surplus/(Shortfall) vs. Original MDRI Cost Estimates			
		Remaining IDA14 period FY07-08 A SDRm	Remainder of first decade FY09-16 B SDRm	Subsequent 3 decades FY17-44 C SDRm	Total FY07-44 D SDRm	Remaining IDA14 period FY07-08 E SDRm	Remainder of first decade FY09-16 F SDRm	Subsequent 3 decades FY17-44 G SDRm	Total FY07-44 H SDRm	Remaining IDA14 period FY07-08 A-E SDRm	Remainder of first decade FY09-16 B-F SDRm	Subsequent 3 decades FY17-44 C-G SDRm	Total FY07-44 D-H SDRm
Australia	1.49%	8.78	75.93	0.00	84.71	8.78	75.93	284.58	369.29	0.00	0.00	(284.58)	(284.58)
Austria	0.78%	4.26	36.82	0.00	41.08	4.26	36.83	152.32	193.41	(0.00)	(0.01)	(152.32)	(152.33)
Belgium	1.55%	8.47	0.00	0.00	8.47	8.47	73.18	302.70	384.34	0.00	(73.18)	(302.70)	(375.88)
Canada	3.90%	19.87	0.00	0.00	19.87	19.87	184.61	763.58	968.05	(0.00)	(184.61)	(763.58)	(948.18)
Czech Republic	0.05%	0.27	2.36	0.00	2.63	0.27	2.36	9.76	12.40	0.00	(0.00)	(9.76)	(9.76)
Denmark	1.74%	9.52	82.33	0.00	91.85	9.52	82.33	340.52	432.37	0.00	0.00	(340.52)	(340.52)
Finland	0.61%	3.62	31.26	0.00	34.88	3.62	31.26	117.17	152.05	0.00	0.00	(117.17)	(117.17)
France	6.16%	30.94	291.31	0.00	322.25	30.95	291.31	1,204.93	1,527.19	(0.00)	(0.00)	(1,204.93)	(1,204.93)
Germany	9.87%	46.50	467.30	0.00	513.80	46.51	467.33	1,932.96	2,446.80	(0.01)	(0.03)	(1,932.96)	(1,933.00)
Greece	0.13%	0.70	6.03	0.00	6.73	0.70	6.03	24.94	31.66	(0.00)	0.00	(24.94)	(24.93)
Hungary	0.06%	0.00	0.00	0.00	-	0.32	2.80	11.60	14.73	(0.32)	(2.80)	(11.60)	(14.73)
Iceland	0.04%	0.24	1.89	0.00	2.13	0.24	1.89	7.81	9.94	0.00	(0.00)	(7.81)	(7.81)
Ireland	0.20%	1.08	9.38	38.79	49.26	1.08	9.38	38.79	49.26	(0.00)	0.00	(0.00)	(0.00)
Italy	3.95%	19.76	0.00	0.00	19.76	19.76	186.97	773.34	980.07	0.00	(186.97)	(773.34)	(960.31)
Japan	13.17%	71.64	0.00	0.00	71.64	71.64	621.81	2,571.94	3,265.40	0.00	(621.81)	(2,571.94)	(3,193.75)
Korea, Republic of	0.91%	0.00	0.00	0.00	-	5.49	42.97	177.71	226.16	(5.49)	(42.97)	(177.71)	(226.16)
Kuwait	0.14%	0.00	0.00	0.00	-	0.84	6.61	27.34	34.79	(0.84)	(6.61)	(27.34)	(34.79)
Luxembourg	0.10%	0.55	0.00	0.00	0.55	0.55	4.72	19.53	24.80	(0.00)	(4.72)	(19.53)	(24.25)
Netherlands	2.87%	15.67	135.47	0.00	151.14	15.67	135.47	560.34	711.49	0.00	(0.00)	(560.34)	(560.34)
New Zealand	0.13%	0.72	6.25	0.00	6.97	0.72	6.25	25.86	32.84	0.00	(0.00)	(25.86)	(25.86)
Norway	1.68%	3.94	0.00	0.00	3.94	9.16	79.20	327.59	415.95	(5.22)	(79.20)	(327.59)	(412.01)
Poland	0.03%	0.18	1.42	0.00	1.60	0.18	1.42	5.86	7.46	0.00	0.00	(5.86)	(5.86)
Portugal	0.22%	1.21	10.42	43.10	54.73	1.21	10.42	43.10	54.73	0.00	0.00	(0.00)	0.00
Russian Federation	0.09%	0.48	4.17	17.24	21.89	0.48	4.17	17.24	21.89	(0.00)	0.00	(0.00)	(0.00)
Saudi Arabia	0.39%	0.00	0.00	0.00	-	2.15	18.62	77.03	97.81	(2.15)	(18.62)	(77.03)	(97.81)
Singapore	0.14%	0.00	0.00	0.00	-	0.78	6.71	27.73	35.21	(0.78)	(6.71)	(27.73)	(35.21)
Slovak Republic	0.01%	0.07	0.00	0.00	0.07	0.07	0.62	2.58	3.27	0.00	(0.62)	(2.58)	(3.20)
Slovenia	0.03%	0.17	0.00	0.00	0.17	0.16	1.42	5.86	7.44	0.00	(1.42)	(5.86)	(7.27)
South Africa	0.09%	0.48	4.17	17.24	21.89	0.48	4.17	17.24	21.89	(0.00)	(0.00)	0.00	0.00
Spain	1.99%	10.85	93.79	0.00	104.64	10.85	93.79	387.93	492.57	0.00	0.00	(387.93)	(387.93)
Sweden	2.89%	15.79	136.52	0.00	152.31	15.79	136.52	564.65	716.96	0.00	0.00	(564.65)	(564.65)
Switzerland	2.44%	0.00	0.00	0.00	-	14.65	114.73	474.55	603.93	(14.65)	(114.73)	(474.55)	(603.93)
United Kingdom	13.83%	77.07	652.50	0.00	729.57	77.06	652.50	2,698.88	3,428.44	0.00	(0.00)	(2,698.88)	(2,698.87)
United States	20.31%	58.91	0.00	0.00	58.91	156.89	949.84	3,928.71	5,035.44	(97.98)	(949.84)	(3,928.71)	(4,976.53)
Sub-total									22,810.03				
Structural gap	8.01%								1,986.39				
TOTAL	100.00%	411.76	2049.32	116.37	2,577.45	539.19	4,344.16	17,926.68	24,796.42	(127.43)	(2,294.84)	(17,810.31)	(20,232.58)

Exchange rates used: MDRI Replenishment Foreign Exchange Rate, USD/SDR: 1.47738

Table 10b

International Development Association
Donor Financing of IDA's Forgone Reflows due to the MDRI:
Firm Financing Commitments Received (Unqualified IoCs), by Period
as of December 31, 2006
(USD equivalent millions)

Donors	Shares	Firm Financing Received (Unqualified IoCs)				Contributions, Based on Original MDRI Cost Estimates				Surplus/(Shortfall) vs. Original MDRI Cost Estimates			
		Remaining IDA14 period FY07-08	Remainder of first decade FY09-16	Subsequent 3 decades FY17-44	Total FY07-44	Remaining IDA14 period FY07-08	Remainder of first decade FY09-16	Subsequent 3 decades FY17-44	Total FY07-44	Remaining IDA14 period FY07-08	Remainder of first decade FY09-16	Subsequent 3 decades FY17-44	Total FY07-44
		A	B	C	D	E	F	G	H	A-E	B-F	C-G	D-H
		USDm	USDm	USDm	USDm	USDm	USDm	USDm	USDm	USDm	USDm	USDm	USDm
Australia	1.49%	12.98	112.18	0.00	125.16	12.98	112.18	420.43	545.58	0.00	0.00	(420.43)	(420.43)
Austria	0.78%	6.29	54.40	0.00	60.69	6.29	54.41	225.04	285.74	(0.00)	(0.01)	(225.04)	(225.05)
Belgium	1.55%	12.51	0.00	0.00	12.51	12.51	108.12	447.20	567.82	0.00	(108.12)	(447.20)	(555.31)
Canada	3.90%	29.36	0.00	0.00	29.36	29.36	272.74	1,128.09	1,430.18	(0.00)	(272.74)	(1,128.09)	(1,400.83)
Czech Republic	0.05%	0.40	3.49	0.00	3.89	0.40	3.49	14.43	18.32	0.00	(0.00)	(14.43)	(14.43)
Denmark	1.74%	14.07	121.63	0.00	135.70	14.07	121.63	503.07	638.77	0.00	0.00	(503.07)	(503.07)
Finland	0.61%	5.35	46.19	0.00	51.54	5.34	46.19	173.11	224.64	0.01	0.00	(173.11)	(173.10)
France	6.16%	45.72	430.38	0.00	476.09	45.72	430.38	1,780.13	2,256.24	(0.01)	(0.00)	(1,780.13)	(1,780.14)
Germany	9.87%	68.70	690.38	0.00	759.08	68.71	690.42	2,855.71	3,614.85	(0.02)	(0.04)	(2,855.71)	(2,855.77)
Greece	0.13%	1.03	8.91	0.00	9.94	1.03	8.91	36.84	46.78	(0.00)	0.00	(36.84)	(36.84)
Hungary	0.06%	0.00	0.00	0.00	-	0.48	4.14	17.14	21.76	(0.48)	(4.14)	(17.14)	(21.76)
Iceland	0.04%	0.36	2.79	0.00	3.15	0.36	2.79	11.54	14.69	0.00	(0.00)	(11.54)	(11.54)
Ireland	0.20%	1.60	13.86	57.31	72.77	1.60	13.86	57.31	72.77	(0.00)	0.01	(0.00)	(0.00)
Italy	3.95%	29.20	0.00	0.00	29.20	29.20	276.22	1,142.52	1,447.94	0.00	(276.22)	(1,142.52)	(1,418.74)
Japan	13.17%	105.84	0.00	0.00	105.84	105.84	918.65	3,799.73	4,824.23	0.00	(918.65)	(3,799.73)	(4,718.39)
Korea, Republic of	0.91%	0.00	0.00	0.00	-	8.10	63.48	262.55	334.13	(8.10)	(63.48)	(262.55)	(334.13)
Kuwait	0.14%	0.00	0.00	0.00	-	1.25	9.77	40.39	51.40	(1.25)	(9.77)	(40.39)	(51.40)
Luxembourg	0.10%	0.81	0.00	0.00	0.81	0.81	6.98	28.85	36.63	(0.00)	(6.98)	(28.85)	(35.83)
Netherlands	2.87%	23.16	200.14	0.00	223.30	23.15	200.15	827.84	1,051.14	0.00	(0.00)	(827.84)	(827.84)
New Zealand	0.13%	1.07	9.23	0.00	10.30	1.07	9.24	38.21	48.51	0.00	(0.00)	(38.21)	(38.21)
Norway	1.68%	5.82	0.00	0.00	5.82	13.54	117.01	483.97	614.51	(7.72)	(117.01)	(483.97)	(608.69)
Poland	0.03%	0.27	2.09	0.00	2.36	0.27	2.09	8.66	11.02	0.00	0.00	(8.66)	(8.66)
Portugal	0.22%	1.79	15.40	63.67	80.86	1.78	15.40	63.68	80.86	0.01	0.00	(0.01)	0.00
Russian Federation	0.09%	0.71	6.16	25.47	32.34	0.71	6.16	25.47	32.34	(0.00)	0.00	(0.00)	(0.00)
Saudi Arabia	0.39%	0.00	0.00	0.00	-	3.18	27.52	113.81	144.51	(3.18)	(27.52)	(113.81)	(144.51)
Singapore	0.14%	0.00	0.00	0.00	-	1.15	9.91	40.97	52.03	(1.15)	(9.91)	(40.97)	(52.03)
Slovak Republic	0.01%	0.11	0.00	0.00	0.11	0.11	0.92	3.81	4.84	0.00	(0.92)	(3.81)	(4.73)
Slovenia	0.03%	0.25	0.00	0.00	0.25	0.24	2.09	8.66	10.99	0.01	(2.09)	(8.66)	(10.74)
South Africa	0.09%	0.71	6.16	25.47	32.34	0.71	6.16	25.47	32.34	(0.00)	(0.00)	0.00	0.00
Spain	1.99%	16.03	138.56	0.00	154.59	16.03	138.56	573.12	727.71	0.00	0.00	(573.12)	(573.12)
Sweden	2.89%	23.33	201.68	0.00	225.02	23.33	201.68	834.21	1,059.22	0.00	0.00	(834.21)	(834.21)
Switzerland	2.44%	0.00	0.00	0.00	-	21.64	169.50	701.09	892.23	(21.64)	(169.50)	(701.09)	(892.23)
United Kingdom	13.83%	113.86	963.99	0.00	1,077.85	113.85	963.99	3,987.27	5,065.11	0.01	(0.00)	(3,987.27)	(3,987.26)
United States	20.31%	87.03	0.00	0.00	87.03	231.78	1,403.27	5,804.20	7,439.25	(144.75)	(1,403.27)	(5,804.20)	(7,352.22)
Sub-total									33,699.08				
Structural gap	8.01%								2,934.65				
TOTAL	100.00%	608.33	3027.62	171.92	3,807.88	796.60	6,417.97	26,484.51	36,633.73	(188.26)	(3,390.35)	(26,312.59)	(29,891.21)

Exchange rates used: MDRI Replenishment Foreign Exchange Rate, USD/SDR: 1.47738

Table 11a

**International Development Association
Irrevocable MDRI Debt Relief Provided by IDA
vs. Firm Donor Financing Received
as of December 31, 2006
(SDR equivalent millions)**

Updated MDRI Cost Estimates	Irrevocable MDRI Debt Relief Already Provided by IDA			Future MDRI Debt Relief to be Provided by IDA			Total MDRI Debt Relief by IDA SDRm
	Principal SDRm	Charges SDRm	Total SDRm	Principal SDRm	Charges SDRm	Total SDRm	
Completion-point Countries (21)	16,584	2,550	19,134				19,134
Decision-point Countries (9)				2,256	353	2,609	2,609
Pre-decision Point Countries (10)				2,664	222	2,887	2,887
Total MDRI Costs	16,584	2,550	19,134	4,920	575	5,495	24,629

Donor Financing as per MDRI Resolution	Donors Financing Status		Total Donor Financing for the MDRI SDRm
	Firm Financing Received SDRm	Firm Financing To Be Provided SDRm	
Unqualified IoCs	2,577		2,577
<u>Qualified IoCs</u>		13,859	<u>13,859</u>
Total IoCs Received			16,437
Costs To Be Financed		8,360	8,360
Total MDRI Financing	2,577	22,219	24,796

Updated MDRI Costs Estimates vs. Donor Funding per MDRI Resolution	-167
--	------

Exchange rates used: MDRI Replenishment Foreign Exchange Rate, USD/SDR: 1.47738

Table 11b

**International Development Association
Irrevocable MDRI Debt Relief Provided by IDA
vs. Firm Donor Financing Received
as of December 31, 2006
(USD equivalent millions)**

Updated MDRI Cost Estimates	Irrevocable MDRI Debt Relief Already Provided by IDA			Future MDRI Debt Relief to be Provided by IDA			Total MDRI Debt Relief by IDA USDm
	Principal USDm	Charges USDm	Total USDm	Principal USDm	Charges USDm	Total USDm	
Completion-point Countries (20)	24,501	3,767	28,268				28,268
Decision-point Countries (11)				3,333	521	3,854	3,854
Pre-decision Point Countries (9)				3,936	329	4,264	4,264
Total MDRI Costs	24,501	3,767	28,268	7,269	850	8,118	36,387

Donor Financing as per MDRI Resolution	Donors Financing Status		Total Donor Financing for the MDRI USDm
	Firm Financing Received USDm	Firm Financing To Be Provided USDm	
Unqualified IoCs	3,808		3,808
<u>Qualified IoCs</u>		20,475	<u>20,475</u>
Total IoCs Received			24,283
Costs To Be Financed		12,351	12,351
Total MDRI Financing	3,808	32,826	36,634

Updated MDRI Costs Estimates vs. Donor Funding per MDRI Resolution	-247
--	------

Exchange rates used: MDRI Replenishment Foreign Exchange Rate, USD/SDR: 1.47738