

People with Disabilities in India: From Commitments to Outcomes

"The problem is not how to wipe out the differences but how to unite with the differences intact". – Rabindranath Tagore

Philip O'Keefe
Lead Social Protection Specialist
World Bank, November 2007



The disability study – Background and sources

Main sources –

- Analysis of NSS disability rounds and census
- Administrative data
- Commissioned survey of villages in UP and TN in 2005 (with DFID TF financing)
- Series of background papers
- Reviews of secondary literature
- Field visits to 6 states during preparation
- Lots of inputs and support from NGO/DPO community

Disability study – main sections

- ◆ Definitions
- ◆ Socio-economic profile
- ◆ Attitudes to disability and disabled people
- ◆ Education
- ◆ Employment
- ◆ Health
- ◆ Social security
- ◆ Institutions and policies
- ◆ Accessibility

Key messages of the report

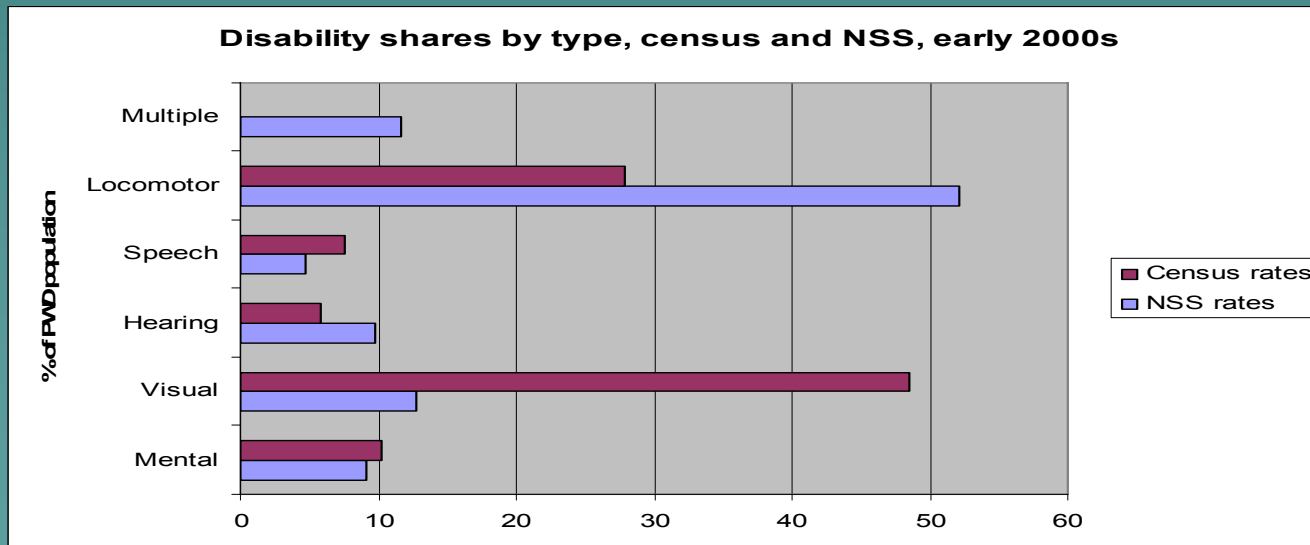
- ◆ *The number of people with disabilities in India is substantial and likely to grow - disability does not "go away" as countries get richer*
- ◆ *People with disabilities in India are subject to deprivation in many dimensions of their lives.*
- ◆ *Social attitudes and stigma play an important role in limiting the opportunities of disabled people for full participation in social and economic life, often even within their own families.*
- ◆ *India has one of the more progressive disability policy frameworks in the developing world. However, there remain huge challenges in operationalizing the policy framework*

Key messages of the report

- ◆ *Increasing the status and social and economic participation of people with disabilities would have positive effects on everyone, not just disabled people.*
- ◆ *India has a vibrant and growing disability rights movement and NGO/DPO and civil society involvement in service delivery for people with disabilities.*
- ◆ *While there is a long way to go, focusing on “getting the basics right” on disability policy would allow for significant progress in the foreseeable future.*

The number of people with disabilities in India is substantial and likely to grow

- ◆ **Official disability rates remarkably low** – as in most of SAR -- 2.13 % of individuals in census and 1.8 % NSS
- ◆ **BUT** – even with this, NSS says 8.4 % of rural HH and 6.1 % of urban have a disabled member
- ◆ **Major divergence on composition of disability between official sources**



The number of people with disabilities in India is substantial and likely to grow

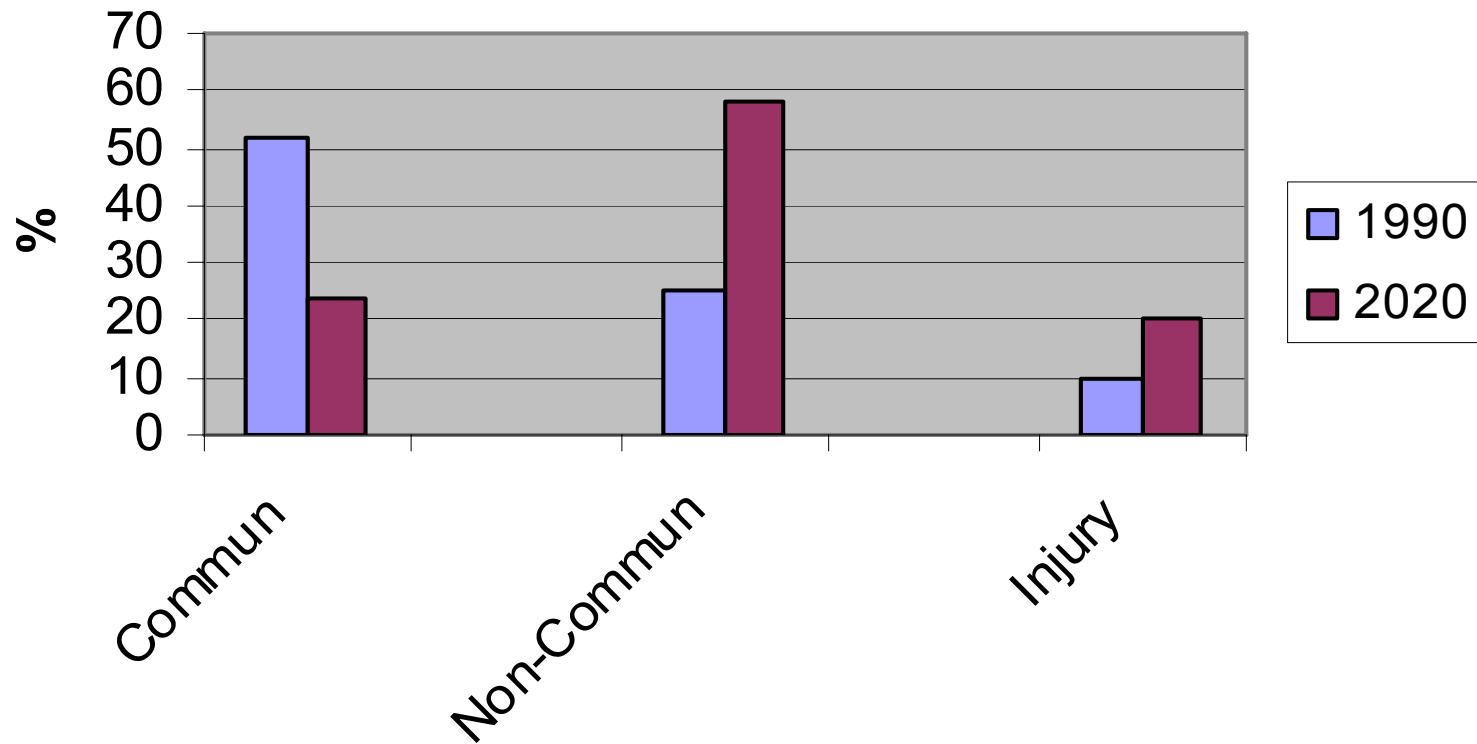
The report estimates a wide range of 4-8 percent of the population with a disability

Why the difference ?

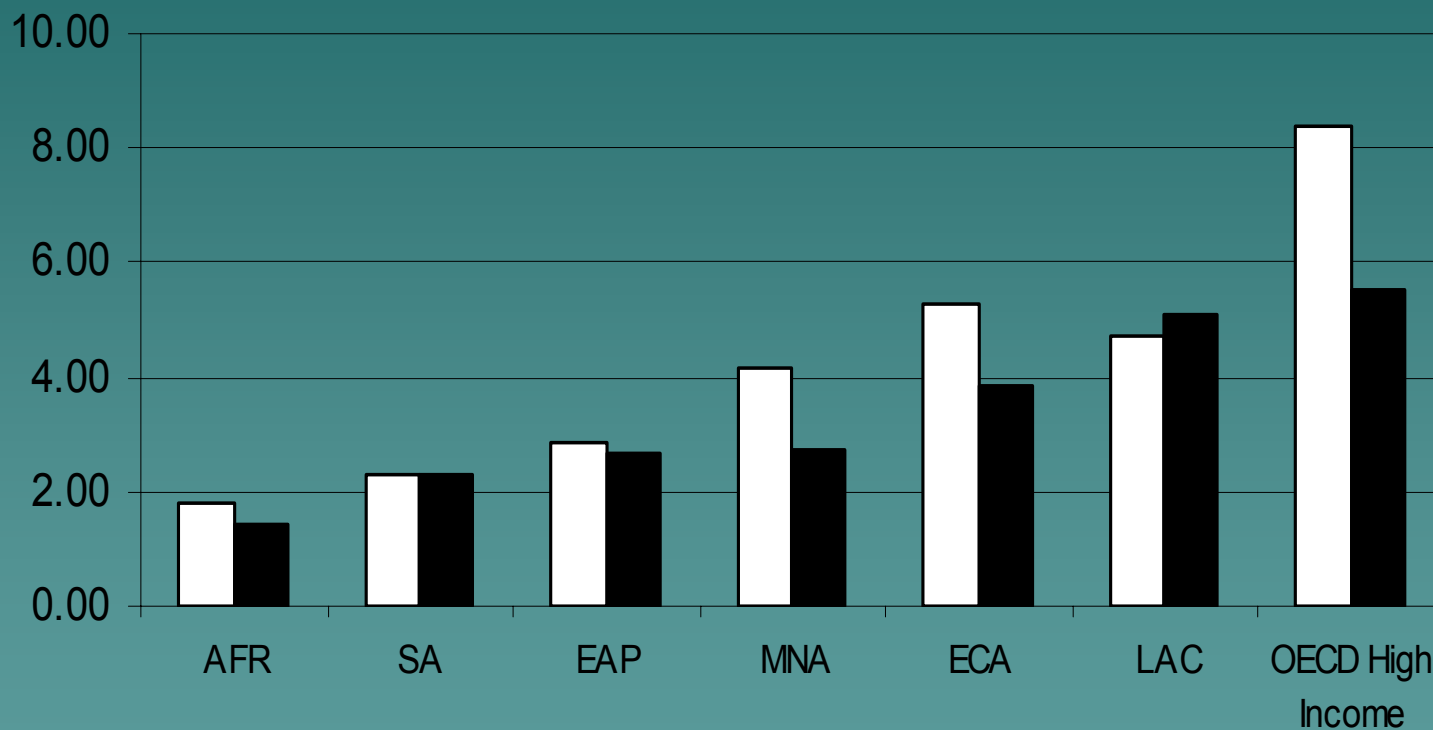
- ◆ Measurement methods used in official surveys/census
- ◆ Based on previous reliable surveys of specific disabilities
- ◆ Social attitudes and stigma
- ◆ International evidence
- ◆ Much of the "gap" is driven by mental retardation and mental health measurement

The Disability Profile is Changing

Share of Disability Adjusted Life Years by Cause



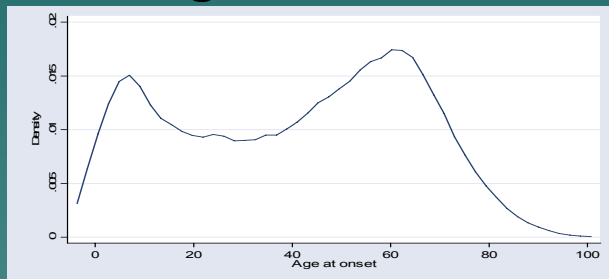
Disability does not go away as countries get richer



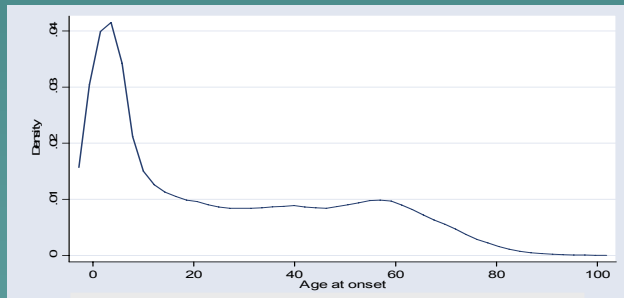
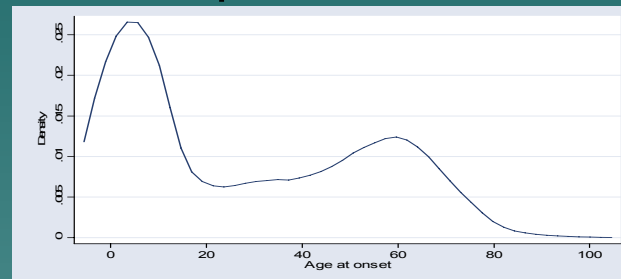
□ Average disability rate ■ pop. w ighted avg. disability rate

Disabled People are a Heterogeneous Group

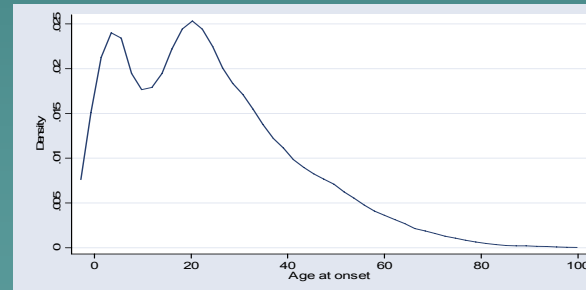
Hearing



Speech

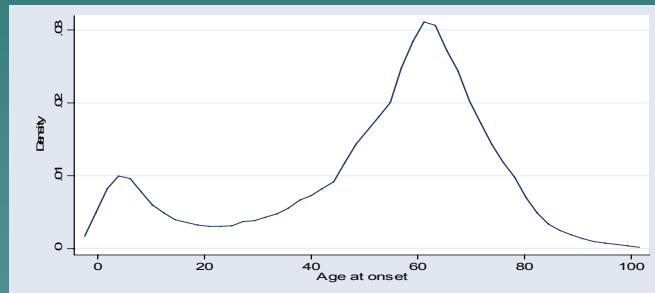


Locomotor



Mental

Disabled People are a Heterogeneous Group



Visual

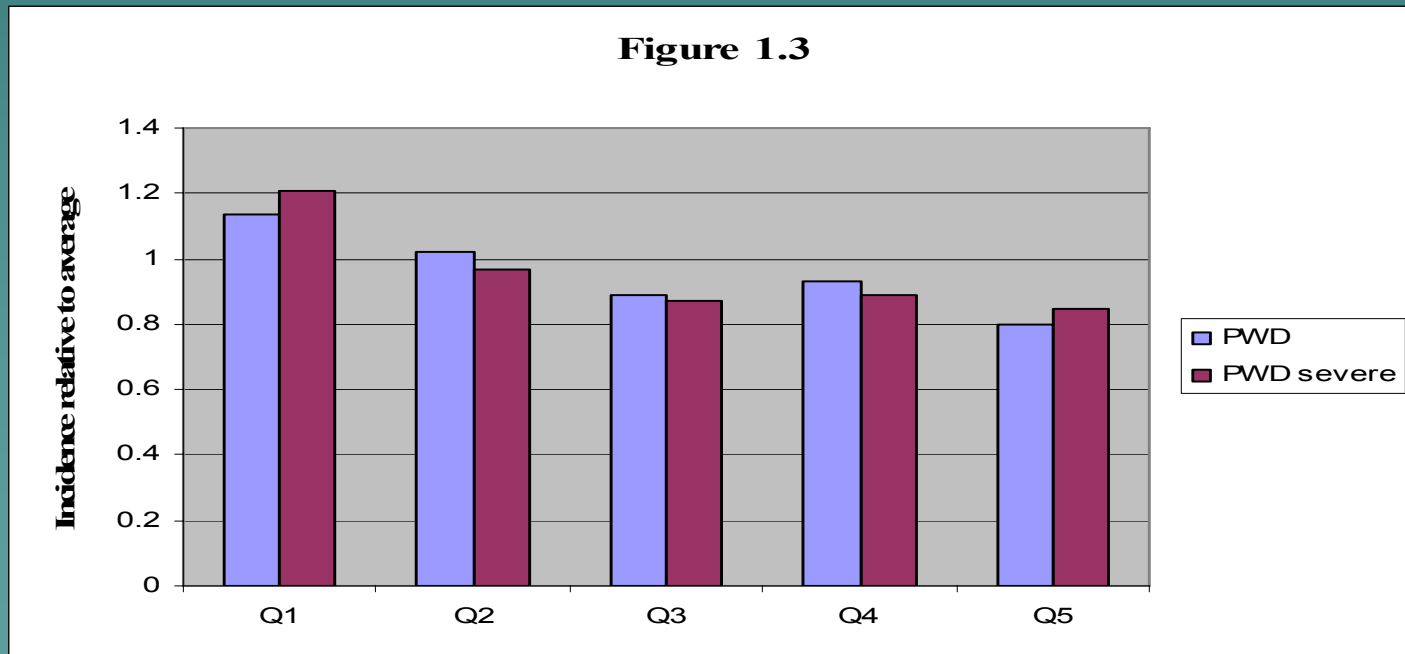
Disabled People are a Heterogeneous Group

Extent of disability	Share of all PWD
Can not for self even with aid	13.6%
Can care for self only with aid	17.2
Can care for self w/out aid	60.2
Aid/appliance not available	9.0

People with Disabilities are Subject to Multiple Deprivations

They are Poorer and have “conversion handicap”

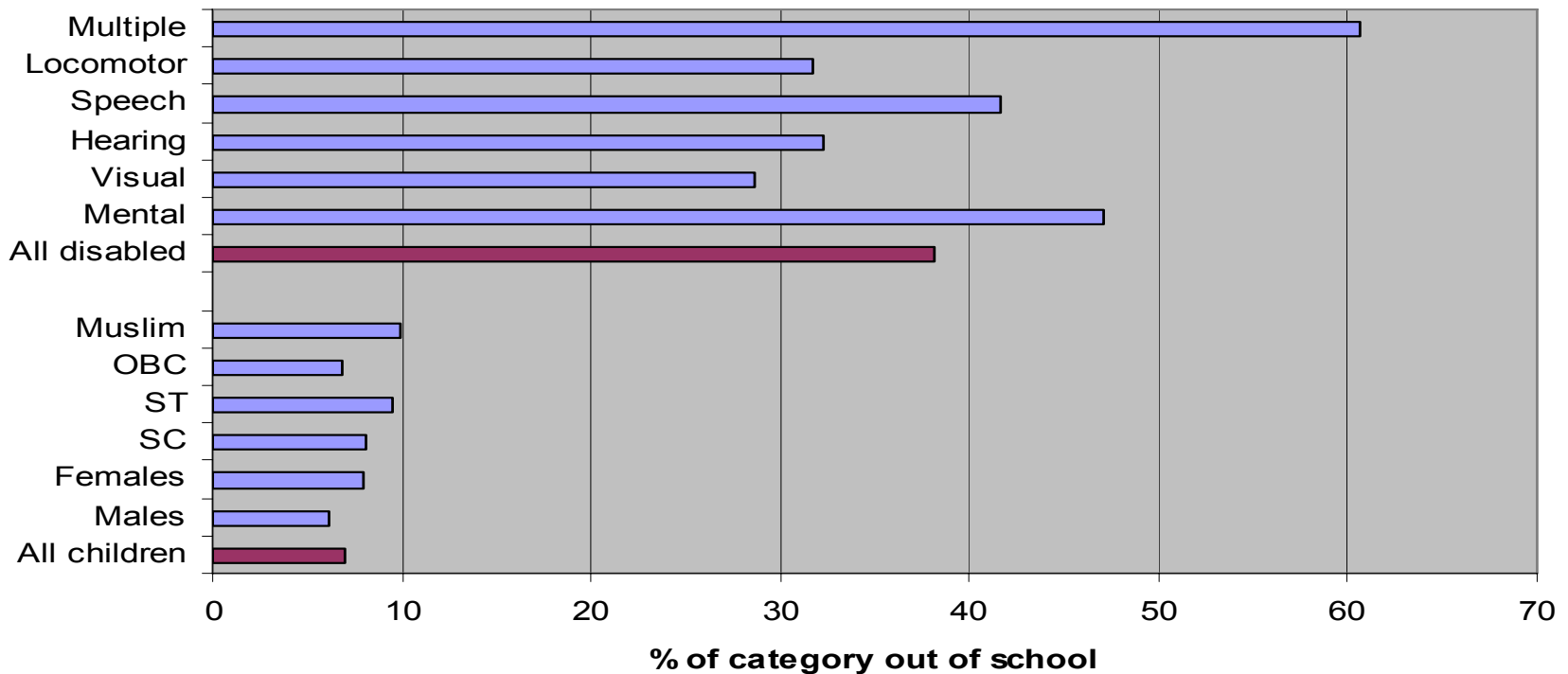
- ◆ Households with PWD one quarter less likely to report 3 meals a day year round
- ◆ They are more likely to be in low income groups



People with Disabilities are Subject to Multiple Deprivations

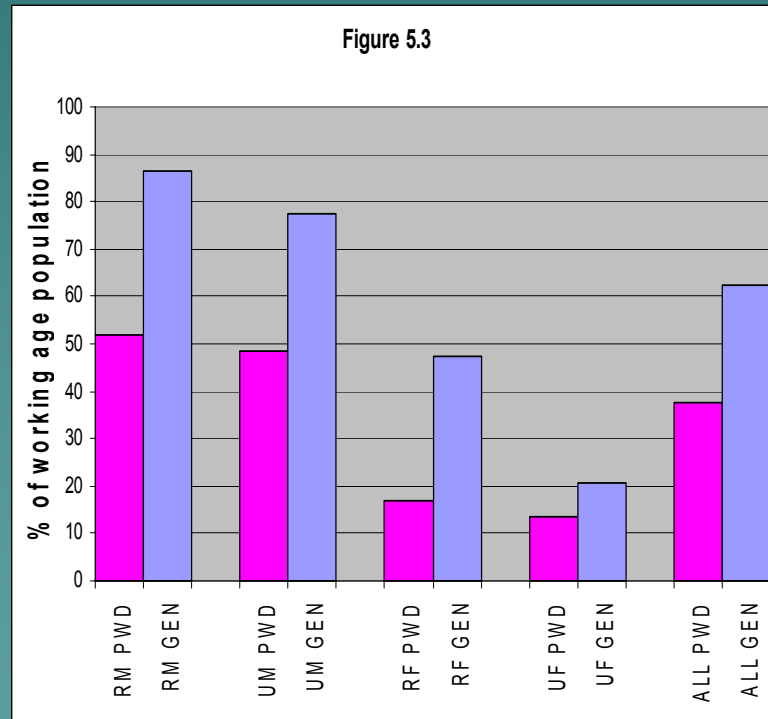
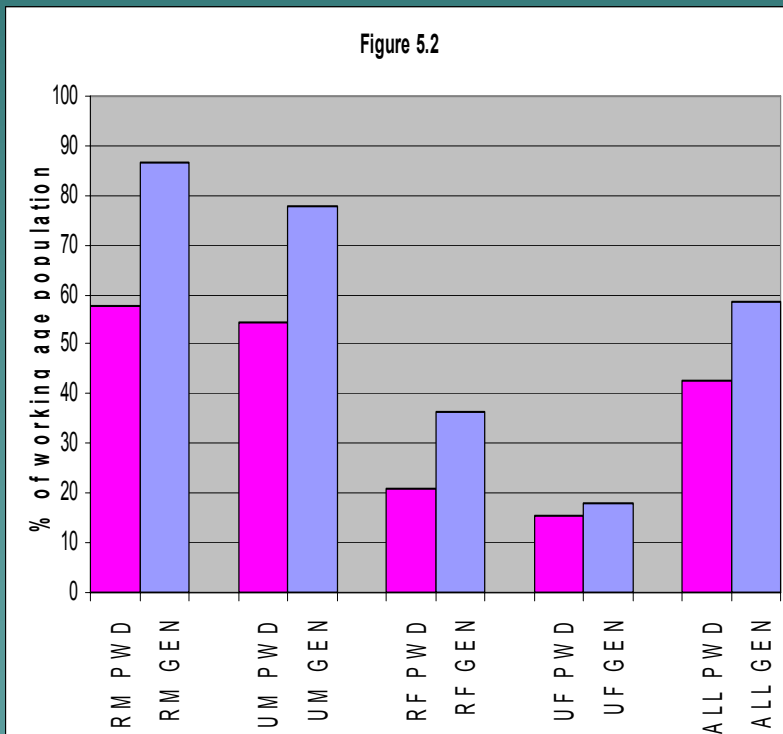
They are much more likely to be illiterate and out of school

Figure *.*: Share of 6-13 year olds out of school by social category, 2005



People with Disabilities are Subject to Multiple Deprivations

They have much lower employment rates and the gap to the general population has grown

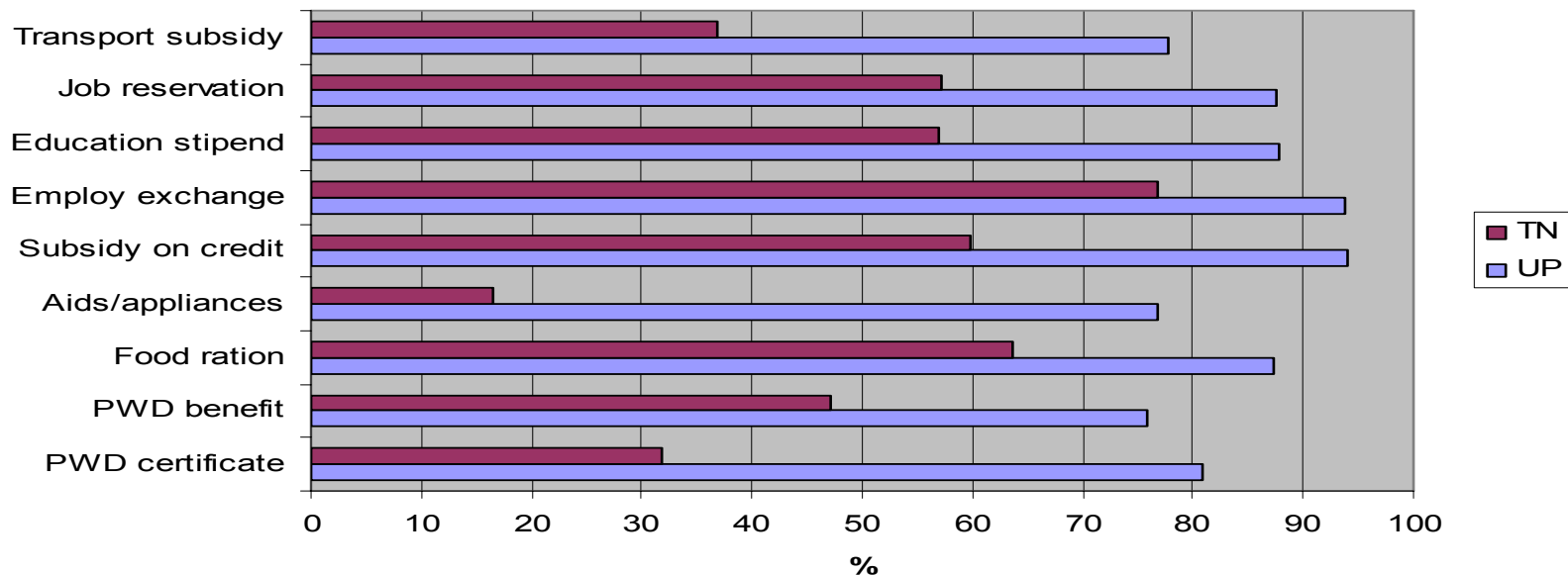


People with Disabilities are Subject to Multiple Deprivations

They often have low awareness of rights and entitlements

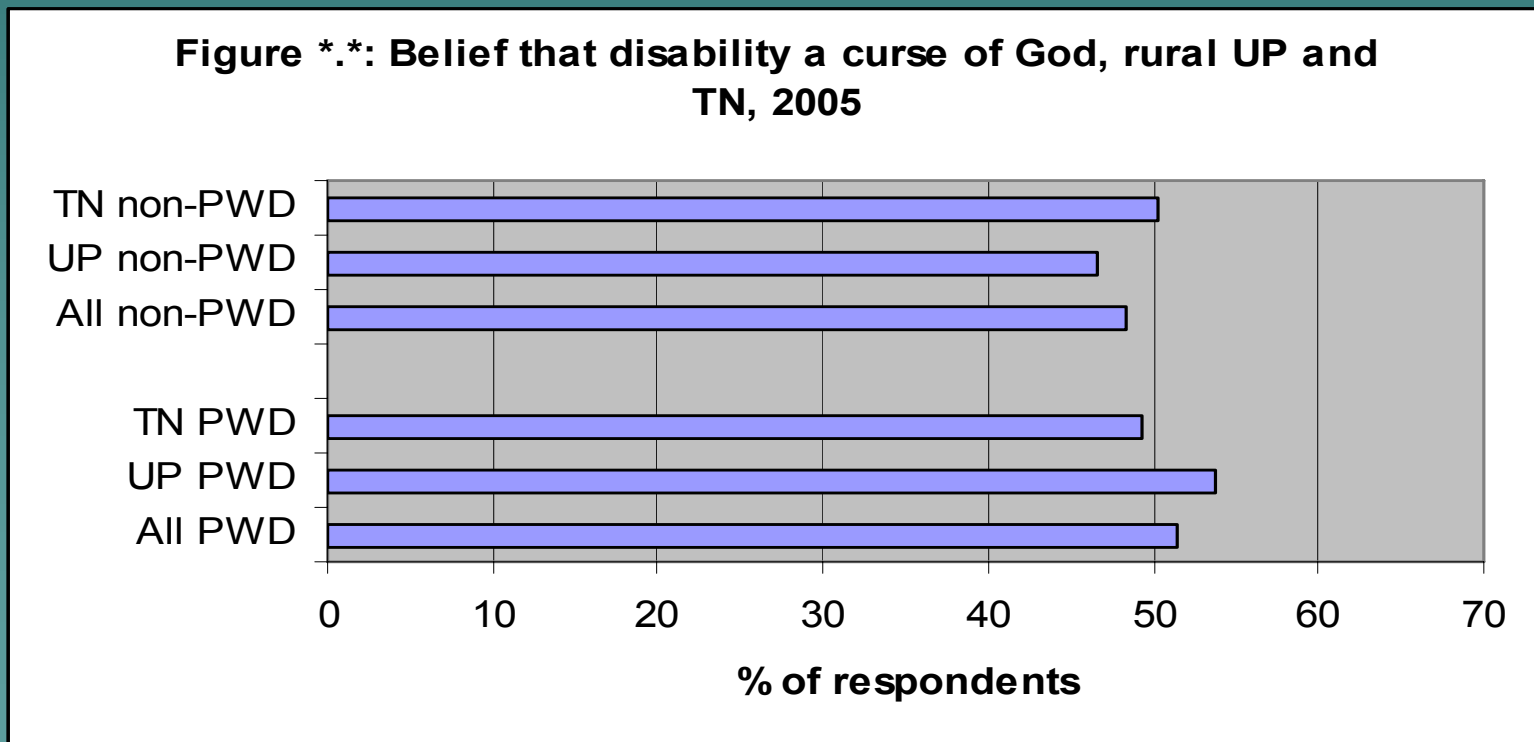
- ◆ 94% of HH with disabled member have not heard of PWD Act in rural TN and UP

Figure *.*: Share of PWD HHs not aware of entitlements



People with Disabilities are Subject to Multiple Deprivations

- ◆ They are subject to strong social stigma within community and families which is often internalized



India has one of the more progressive disability policy frameworks in the developing world

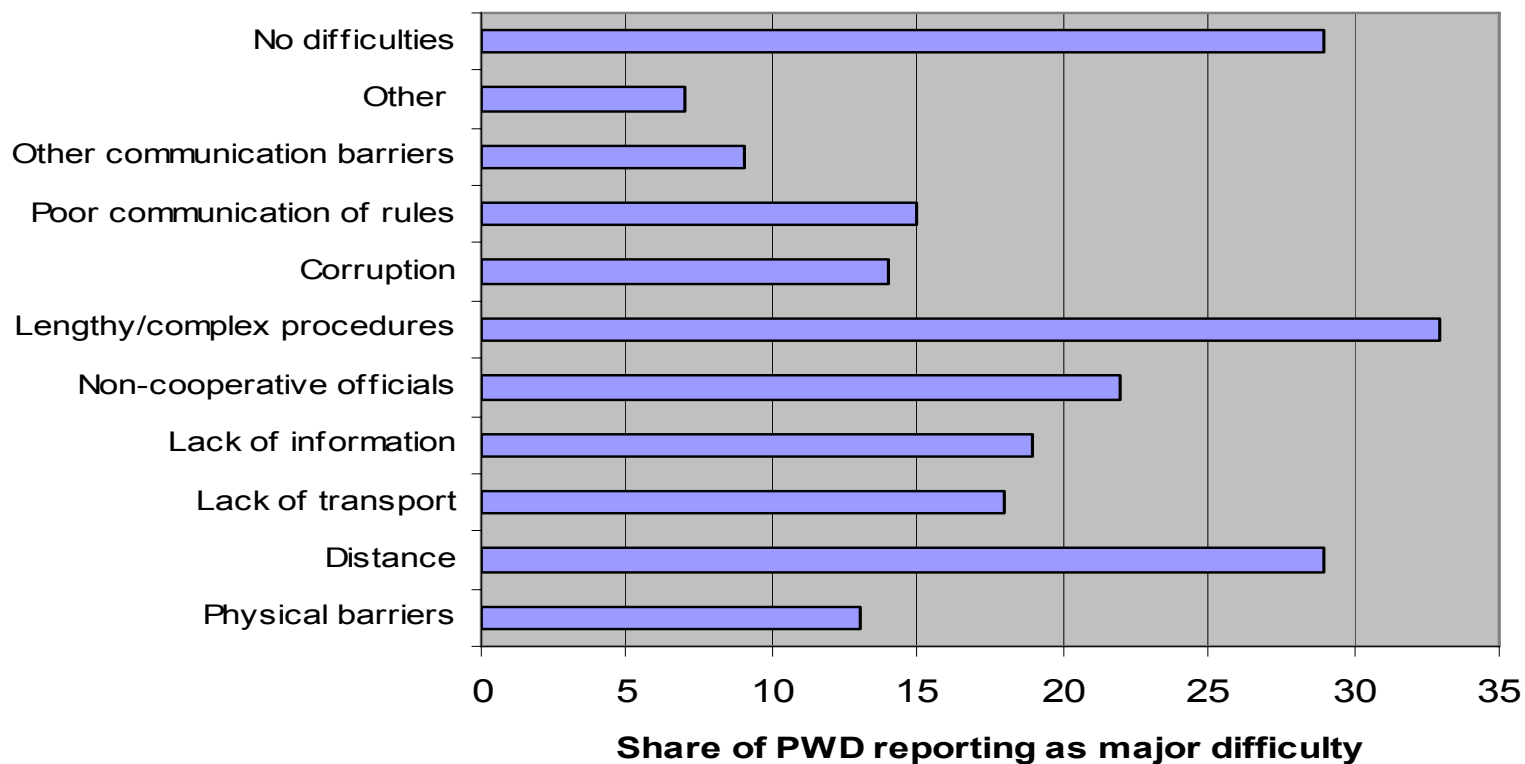
- ◆ PWD Act, 1995
- ◆ National Policy on Persons with Disabilities, 2005
- ◆ Ratification of UN Convention on Rights of Persons with Disabilities (Oct. 2007)
- ◆ State Policies starting (e.g. Chhattisgarh)
- ◆ Sector-specific policies emerging – e.g. National Action Plan for Inclusion in Education of Children and Youth with Disabilities – 2005/06

But there remain huge challenges in operationalizing the policy framework

- ◆ Inherent challenges of inter-sectoral coordination
- ◆ Awareness among service providers, officials and PWD often low
- ◆ Executive Coordination Structures very weak in most states
- ◆ Commissioners' offices usually under-resourced in funds and people
- ◆ Mechanisms for service outreach below district level remain under-developed - unclear PRI strategy
- ◆ NGO sector vibrant but challenges to expand into rural areas and to strengthen business processes

But there remain huge challenges in operationalizing the policy framework

Figure *.*: Top difficulties in applying for PWD benefits and services, UP and TN, 2005



Key recommendation of the report: “Get the basics right”

What does that mean in practice ?

- ◆ **Preventive care** - both for mothers through nutritional interventions, and infants through both nutrition and basic immunization coverage. Improve road and workplace safety
- ◆ **Identifying people with disabilities** as soon as possible after onset - the system needs major improvements in this most basic function
- ◆ **Major improvements in early intervention**, which can cost effectively transform the lives of disabled people, their families, and the communities they live and work in
- ◆ **Getting all children with special needs into school** and giving young disabled adults the skills to participate fully in family and economic life
- ◆ Expanding efforts to **improve societal attitudes** to people with disabilities, relying on public-private partnerships that build on successful models already operating in India

The Good News...

- ◆ A lot of these things are already happening through many initiatives
 - ◆ Good practice states like TN, AP and Karnataka show that major improvements can be made at scale
 - ◆ The question is how to mobilize social commitment and how to develop delivery systems which can work at scale, especially in rural areas
- 