

Tajikistan Gender Profile

Since independence in 1991, Tajikistan has experienced a significant reversal in economic and social gains made during the Soviet period, leading to extremely high levels of poverty. Although the human cost of both transition and conflict has been high for everyone, women have been more adversely affected. Gender disparities are reflected in troubling declines in education enrollment rates and access to reproductive health, as well as dramatic increases in maternal, under-five and infant mortality rates.

Poverty:

- 80% of population lives in poverty and 17% lives in extreme poverty.
- Female headed households are nearly 30% more likely to be poor than those headed by men.

Labor Market:

- Female employment as a percent of total employment has increased in the past decade.
- The gender wage gap is very high and is partly unexplained by differences in productivity.
- There is evidence of gender disparities in access to some parts of the labor market with women highly concentrated in semi-skilled positions¹.

Reproductive Health:

- Infant mortality, under-five mortality, and maternal mortality rates are one of the highest in the region. Women's access to antenatal care is the lowest in the region (a number comparable to that of sub-Saharan Africa).
- The percentage of births attended by skilled professionals is the lowest in the region and fast declining.
- HIV/AIDS growth rate is very high.

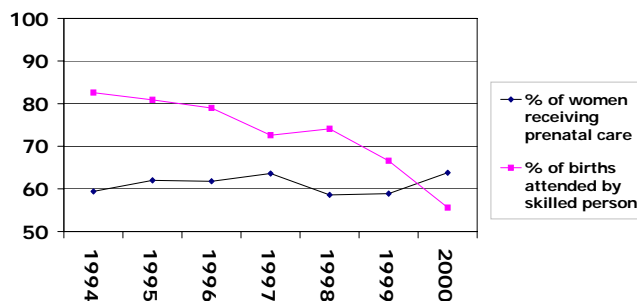
Education:

- Largest gender gap in education attainment in the region and growing.
- Gender disparities in enrollment rates are even greater at secondary and higher education.

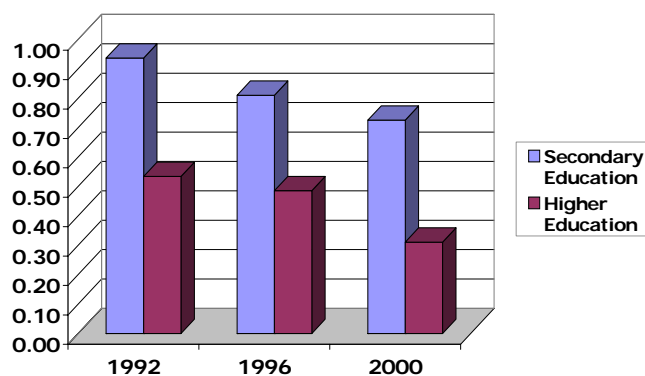
Access to Resources:

- There are large gender disparities in access to land (and arable land), irrigation, livestock, and capital.

Percent of Women Receiving Prenatal Care and Assistance at Delivery 1994-2000



Ratio of Girls to Boys Enrollment Rates in Secondary and Higher Education 1992, 1996, 2000



¹ Women in Tajikistan, Asian Development Bank, 2000.

Tajikistan Gender Profile

Western Europe***

Basic	1990	1995	2000	1990	1995	2000
Females per 100 males	101.2	100.5	100.0	105.9	105.0	104.3
Male-Female Gap in Life Expectancy (females minus males)	5.1	5.5	4.7	5.84	5.74	5.58
Mortality	1990	1995	2000	1990	1995	2000
Infant mortality rate (per 1,000 live births)						
<i>TMD</i>	40.7	30.9	36.7	7.8	5.9	4.9
<i>UNICEF childinfo</i>	57	57	54.0			
<i>MICS 2000</i>	..	**89	..			
Under 5 mortality rate (per 1,000 births)						
<i>TMD</i>	61.5	41.3	30.4	9.2	6.8	6.4
<i>UNICEF childinfo</i>	78.0	78.0	73.0			
<i>MICS 2000</i>	..	**126	..			
<i>TSL 1999</i>	*120			
Maternal Mortality (per 100,000 live births)						
<i>TMD</i>	41.8	58.2	12	..
<i>TLSS 1999</i>	*65.5			
Reproductive Health	1990	1995	2000	1990	1995	2000
Total fertility rate						
<i>TMD</i>	5.05	4.38	3.68	1.61	1.44	1.43
Percent of pregnant women receiving some pregnancy consultations						
<i>TMD</i>	63.9	62.0	63.8	98
<i>MICS 2000</i>			71.3			
Percent of births attended by trained personnel						
<i>TMD</i>	*93.6	80.9	55.6	98
<i>MICS 2000</i>	71.3			
Education	1990	1995	2000	1990	1995	2000
Ratio of girls' enrollment rates to boys in basic education						
<i>TMD</i>	0.98	0.97	0.89	1.01	1.00	1.00
<i>TSL 1999</i>	*0.92			
Ratio of girls' enrollment rates to boys in secondary education						
<i>TMD</i>	..	0.81	0.73	1.01	1.07	1.11
<i>TSL 1999</i>	*0.73			
Ratio of girls' enrollment rates to boys in higher education						
<i>TMD</i>	0.62	0.37	0.31	0.96	1.08	1.19
<i>SSA, Gender Statistics in Tajikistan</i>	0.58	0.37	..			
Labor	1990	1995	2000	1990	1995	2000
Females as % of estimated total number of employed persons						
<i>TMD</i>	40	44	..			
Female labor force participation rate (LFS)						
<i>ILO</i>	58.6	58.4	*60.3
<i>WB 2000</i>	57.1	60.0	..			
<i>TLSS 1999</i>	*43.9			
Male labor force participation rate (LFS)						
<i>ILO</i>	81.7	79.3	*79.5
<i>WB 2000</i>	79.0	78.7	..			
<i>TLSS 1999</i>	*69.1			
Gender wage gap						
<i>University of Sussex</i>	*69.0			
of which unexplained differentials	25.0			

Sources:

TMD= TransMonee Database

TLSS= 1999 Tajikistan Living Standards Survey

TSL 1999 = Tajikistan Living Standards Survey. May-June'99 jointly by the State Statistical Agency.

SSA=State Statistical Agency, Tajikistan

MICS 2000 = Tajikistan Multiple Indicator Cluster Survey.

ILO = Key Indicators of the Labor Market 2002

UNICEF/childinfo = Infant and under 5 mortality rate, per 1,000 live births

University of Sussex = The Gender Pay Gap in Selected Transitional Economies: A Quantile Regression Approach, Barry Reilly, 2003.

WB 2000 - country admin data = Balancing Protection and Opportunity - A strategy for social Protection in Transition Countries (pg 58).

Gender wage gap is expressed as a percent of female wages

Basic Education Enrollment (gross rates, % of relevant population) 7-15 year olds.

*Where no baseline data exist, the value for the closest year for which data exist was used

**The estimates for 1993 appear to be the most recent figures that can be used with some confidence

***Countries used to compute average for Western Europe include Germany, Greece, Italy, Sweden and United Kingdom.