

Guyana

Environment at a Glance 2008



General Facts

	2003	2004	2005	2006
Population (millions)	0.738	0.739	0.739	0.739
GDP (US\$ millions)	742	786	794	896
GNI per capita (US\$, Atlas)	920	940	1,040	1,150
Gross Saving (% of GNI)	13.9	16.2	9.7 ..	
Net Nat. Saving (% of GNI)	4.0	5.3	-0.2 ..	
Adjust. Net Sav. (% of GNI)	-5.5	-9.5	-13.0 ..	

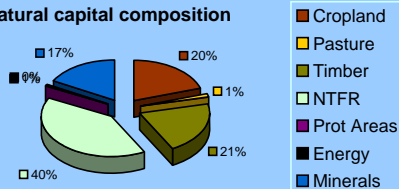
Additional information

Guyana is a Lower middle income country in Latin America and Caribbean. As highlighted in this factsheet, natural resources play an important role in the country's total wealth composition. Main environmental issues include: poor access to water, poor access to sanitation, among others.

Where is the Wealth of Guyana?

	US\$ per capita (2005)
Total Wealth	15,383
Produced Capital	3,713
Natural Capital	26,278
Intangible Capital	-14,607

Natural capital composition



* Source: World Bank, 2006, *Where is the Wealth of Nations?*, World Bank: Washington DC

International Commitments

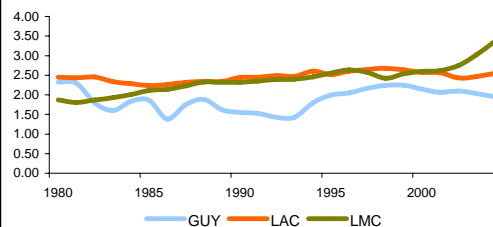
	Year Ratified
Vienna Convention (ozone)	..
UNFCCC (climate change)	..
UNCLOS (law of the sea)	..
UNCCD (desertification treaty)	..
Ramsar Convention (wetlands)	..
Kyoto Protocol (climate change)	..
Convention on Biological Diversity	..
CMS (migratory species treaty)	..
CITES (species trade treaty)	..
Stockholm Convention (POPs)	..
Montreal Protocol (ozone)	..

Pollution

Emissions

	Year	GUY	Latin America and Caribbean	Lower middle income
CO2 Emissions (kt)	2004	1,443	1,381,845	7,508,454
CO2 Emissions (metric tons per capita)	2004	2.0	2.5	3.4
CO2 Em. (kg p/ 2000 US\$ of GDP)	2004	0.6	0.3	0.8
Methane emissions (1000 kt.mt of CO2 eq.)
NOx emissions (1000 mt of CO2 eq.)	2000	795	418,797	1,242,323

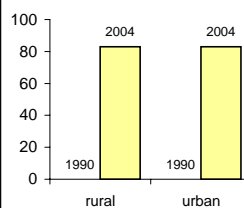
CO2 emissions (metric tons per capita)



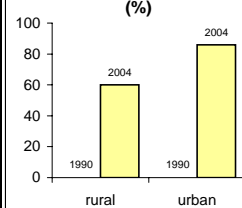
Access to Water and Sanitation

	Year	GUY	Latin America and Caribbean	Lower middle income
Access to improved water source				
% of population with access	2004	83.0	90.9	80.8
% of rural population with access	2004	83.0	73.0	70.8
% of urban population with access	2004	83.0	96.0	93.1
Access to improved sanitation facilities				
% of population with access	2004	70.0	77.0	55.4
% of rural population with access	2004	60.0	48.6	38.7
% of urban population with access	2004	86.0	85.7	76.2

Access to Improved Water Source (%)



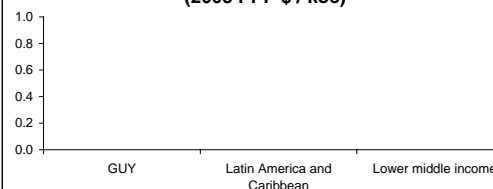
Access to Improved Sanitation Facilities (%)



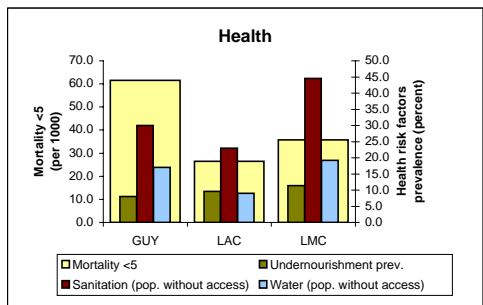
Transport and Energy

	Year	GUY	Latin America and Caribbean	Lower middle income
GDP / energy use (2005 PPP \$ / koe)
Energy use per capita (koe)
Average annual % growth (1990-2005)	0.9	1.7
Electric power cons. (kwh per capita)
Comb. ren. and waste (% of tot. en. use)
Motor vehicles (per 1,000 people)
Passenger cars (per 1,000 people)	2000	82.0	101.5	17.1

GDP per unit of energy use (2005 PPP \$ / koe)

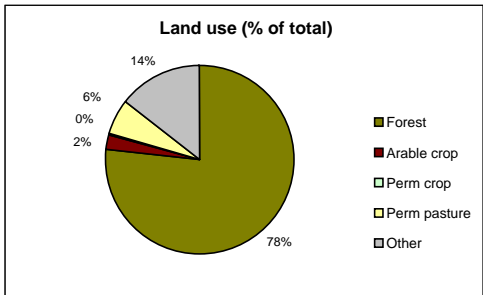


Environmental Health	Year	GUY	Latin America	Lower
			and Caribbean	middle income
Mortality rate, under 5 (per 1,000)	2006	61.6	26.4	35.8
Mortality rate, infant (per 1,000 live births)	2006	46.0	22.3	27.5
Diarrhea treatment (% of children under 5)	2000	39.7
ARI treat. (% of children under 5)	2000	77.6
Undernourishment prev. (% of population)	2004	8.0	9.6	11.4
PM10 concentration (micrograms/m3)	2005	35	37	69.0
PM10 health damages (% of GNI)	2006	0.4	0.4	1.1

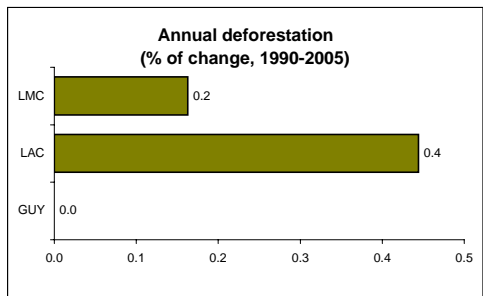


Natural Resources

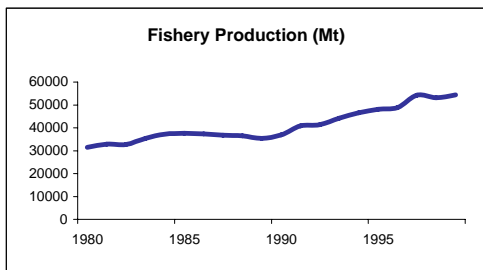
Rural Space	Year	GUY	Latin America	Lower
			and Caribbean	middle income
Rural population (% of total)	2006	71.7	22.3	52.7
Land area (sq.km)	2006	196,850	20,156,480	27,976,588
Arable cropland area (%)	2005	2.4	7.2	11.4
Permanent cropland area (%)	2005	0.2	1.0	1.9
Permanent pasture area (%)	2003	6.2	28.0	30.8
Irrigated land (% of cropland)	2003	29.4	12.5	26.3
Fertilizer cons. (100 g/ha arable land)	2005	163	1,003	2,057
Tractors per 100 km2 of arable land	2003	76	122	92
Land under cereal production (1000 ha)	2006	155,778	48,012,663	176,112,626
Cereal yield (kg per ha)	2006	1,774



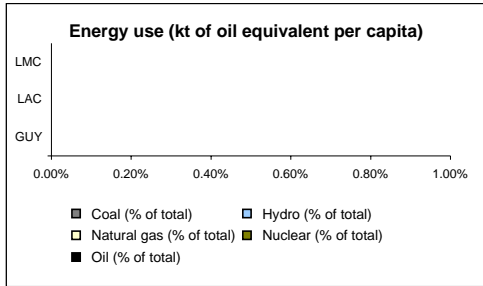
Forests and Biodiversity	Year	GUY	Latin America	Lower
			and Caribbean	middle income
Forest Area (sq.km)	2005	151,040	9,147,420	7,413,180
Annual deforestation (% of change)	2005	0.0	0.4	0.2
National protected area (% of land area)	2004	2.5	19.7	12.8
Mammals species, number	2004	237
Mammal species, number threatened	2004	13
Bird species, number	2004	786
Bird species, threatened	2004	3
Plant species, number	2004	6,409
Plant species, threatened	2004	23



Fisheries	Year	GUY	Latin America	Lower
			and Caribbean	middle income
Total Fish Catch - Production (Mt)	1999	54,450
Total Fish Catch - Exports (Mt)	1999	785
Total Fish Catch - Imports (Mt)	1999	4
Marine Protected Areas (% of surface area)	2006



Energy Sources	Year	GUY	Latin America	Lower
			and Caribbean	middle income
Total energy production (koe)
Energy use (koe)
Net energy imports (% of energy use)
Electricity production (kwh in millions)
Sources of electricity:				
Coal (% of total)
Hydro (% of total)
Natural gas (% of total)
Nuclear (% of total)
Oil (% of total)



Water Resources	Year	GUY	Latin America	Lower
			and Caribbean	middle income
Freshwater res. per capita (cubic m.)	2005	325,908	24,471	5,769
Freshwater use (% of total)	2002	0.7	2.0	7.3
Agricultural water use (% of use)	2002	97.6	70.6	75.0
Domestic water use (% of use)	2002	1.8	19.0	7.9
Industrial water use (% of use)	2002	0.6	10.3	17.1

