

Benin

Environment at a Glance 2008



General Facts

	2003	2004	2005	2006
Population (millions)	7.962	8.224	8.490	8.760
GDP (US\$ millions)	3,558	4,047	4,287	4,775
GNI per capita (US\$, Atlas)	370	450	510	530
Gross Saving (% of GNI)	10.6	10.4	10.7 ..	
Net Nat. Saving (% of GNI)	2.4	2.0	2.3 ..	
Adjust. Net Sav. (% of GNI)	4.6	4.9	4.3 ..	

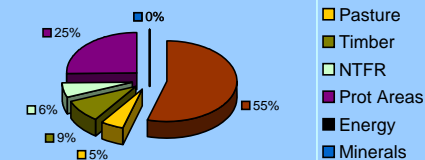
Additional information

Benin is a Low income country in Sub-Saharan Africa. As highlighted in this factsheet, natural resources play an important role in the country's total wealth composition. Main environmental issues include: poor access to water, poor access to sanitation, high use of biomass fuels, among others.

Where is the Wealth of Benin?

US\$ per capita (2005)	
Total Wealth	6,058
Produced Capital	576
Natural Capital	1,415
Intangible Capital	4,067

Natural capital composition



* Source: World Bank, 2006, *Where is the Wealth of Nations?*, World Bank: Washington DC

International Commitments

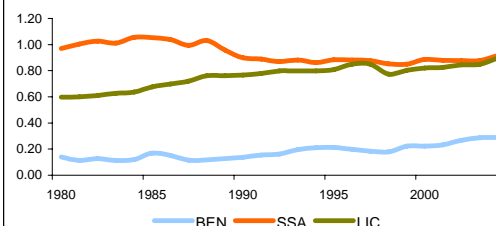
Commitment	Year Ratified
Vienna Convention (ozone)	1993
UNFCCC (climate change)	1994
UNCLOS (law of the sea)	1997
UNCCD (desertification treaty)	1996
Ramsar Convention (wetlands)	2000
Kyoto Protocol (climate change)	2002
Convention on Biological Diversity	1994
CMS (migratory species treaty)	1986
CITES (species trade treaty)	1984
Stockholm Convention (POPs)	2004
Montreal Protocol (ozone)	1993

Pollution

Emissions

	Year	BEN	Sub-Saharan Africa	Low income
CO2 Emissions (kt)	2004	2,385	673,223	2,082,851
CO2 Emissions (metric tons per capita)	2004	0.3	0.9	0.9
CO2 Em. (kg p/ 2000 US\$ of GDP)	2004	0.2	0.6	0.5
Methane emissions (1000 kt.mt of CO2 eq.)	2005	5	..	1,527
NOx emissions (1000 mt of CO2 eq.)	2000	2,704	353,802	910,770

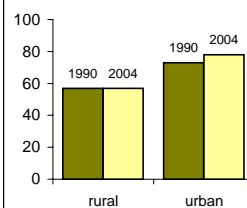
CO2 emissions (metric tons per capita)



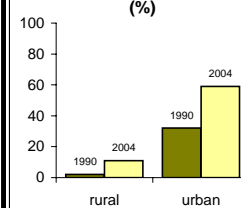
Access to Water and Sanitation

	Year	BEN	Sub-Saharan Africa	Low income
Access to improved water source				
% of population with access	2004	67.0	56.1	75.0
% of rural population with access	2004	57.0	42.4	69.4
% of urban population with access	2004	78.0	80.1	88.1
Access to improved sanitation facilities				
% of population with access	2004	33.0	37.1	38.3
% of rural population with access	2004	11.0	28.1	28.4
% of urban population with access	2004	59.0	53.3	60.4

Access to Improved Water Source (%)



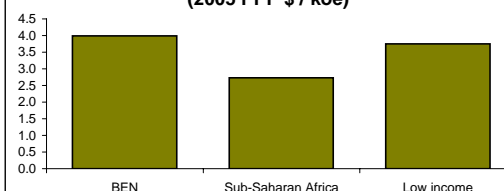
Access to Improved Sanitation Facilities (%)



Transport and Energy

	Year	BEN	Sub-Saharan Africa	Low income
GDP / energy use (2005 PPP \$ / koe)	2005	4.0	2.7	3.8
Energy use per capita (koe)	2005	304.3	680.7	486.2
Average annual % growth (1990-2005)		-0.4	-0.2	0.9
Electric power cons. (kwh per capita)	2005	69.4	542.2	390.7
Comb. ren. and waste (% of tot. en. use)	2005	64.7	56.3	41.7
Motor vehicles (per 1,000 people)
Passenger cars (per 1,000 people)	2002	13.0	..	7.7

GDP per unit of energy use (2005 PPP \$ / koe)



Environmental Health

	Year	BEN	Sub-Saharan Africa	Low income
Mortality rate, under 5 (per 1,000)	2006	148.0	157.5	112.3
Mortality rate, infant (per 1,000 live births)	2006	87.8	94.2	74.2
Diarrhea treatment (% of children under 5)	2001	41.7
ARI treat. (% of children under 5)	2006	35.7
Undernourishment prev. (% of population)	2004	12.0	29.8	24.4
PM10 concentration (micrograms/m3)	2005	41	60	73.9
PM10 health damages (% of GNI)	2006	0.4	0.4	0.7

Natural Resources

Rural Space

	Year	BEN	Sub-Saharan Africa	Low income
Rural population (% of total)	2006	59.5	64.2	69.6
Land area (sq.km)	2006	110,620	23,606,115	28,147,451
Arable cropland area (%)	2005	24.9	8.0	14.1
Permanent cropland area (%)	2005	2.4	0.9	1.3
Permanent pasture area (%)	2003	5.0	35.7	30.3
Irrigated land (% of cropland)	2003	0.4	3.5	24.0
Fertilizer cons. (100 g/ha arable land)	2005	0
Tractors per 100 km2 of arable land	2003	1	12	89
Land under cereal production (1000 ha)	2006	830,187	85,645,893	231,907,417
Cereal yield (kg per ha)	2006	1,125

Forests and Biodiversity

	Year	BEN	Sub-Saharan Africa	Low income
Forest Area (sq.km)	2005	23,510	6,263,250	6,713,690
Annual deforestation (% of change)	2005	1.9	0.6	0.5
National protected area (% of land area)	2004	23.9	11.3	9.9
Mammals species, number	2004	159
Mammal species, number threatened	2004	6
Bird species, number	2004	485
Bird species, threatened	2004	2
Plant species, number	2004	2,500
Plant species, threatened	2004	14

Fisheries

	Year	BEN	Sub-Saharan Africa	Low income
Total Fish Catch - Production (Mt)	1999	40,436
Total Fish Catch - Exports (Mt)	1999	0
Total Fish Catch - Imports (Mt)	1999	0
Marine Protected Areas (% of surface area)	2006

* Source: FAO, Faostat

Energy Sources

	Year	BEN	Sub-Saharan Africa	Low income
Total energy production (koe)	2005	1,672	748,038	1,146,966
Energy use (koe)	2005	2,584	462,627	1,110,650
Net energy imports (% of energy use)	2005	35.3	-61.7	-3.3
Electricity production (kwh in millions)	2005	107	349,008	1,082,413
Sources of electricity:				
Coal (% of total)
Hydro (% of total)	2005	0.9	20.1	24.8
Natural gas (% of total)
Nuclear (% of total)
Oil (% of total)	2005	99.1	4.1	7.4

Water Resources

	Year	BEN	Sub-Saharan Africa	Low income
Freshwater res. per capita (cubic m.)	2005	1,213	5,093	3,077
Freshwater use (% of total)	2002	1.3	3.1	16.9
Agricultural water use (% of use)	2002	45.4	86.6	88.5
Domestic water use (% of use)	2002	31.5	10.4	6.3
Industrial water use (% of use)	2002	23.1	3.0	5.2

