



Integrating Gender into Project Monitoring & Evaluation Handouts

Promoting Women's Economic Empowerment Workshop
Tunis, 21-23 May 2009

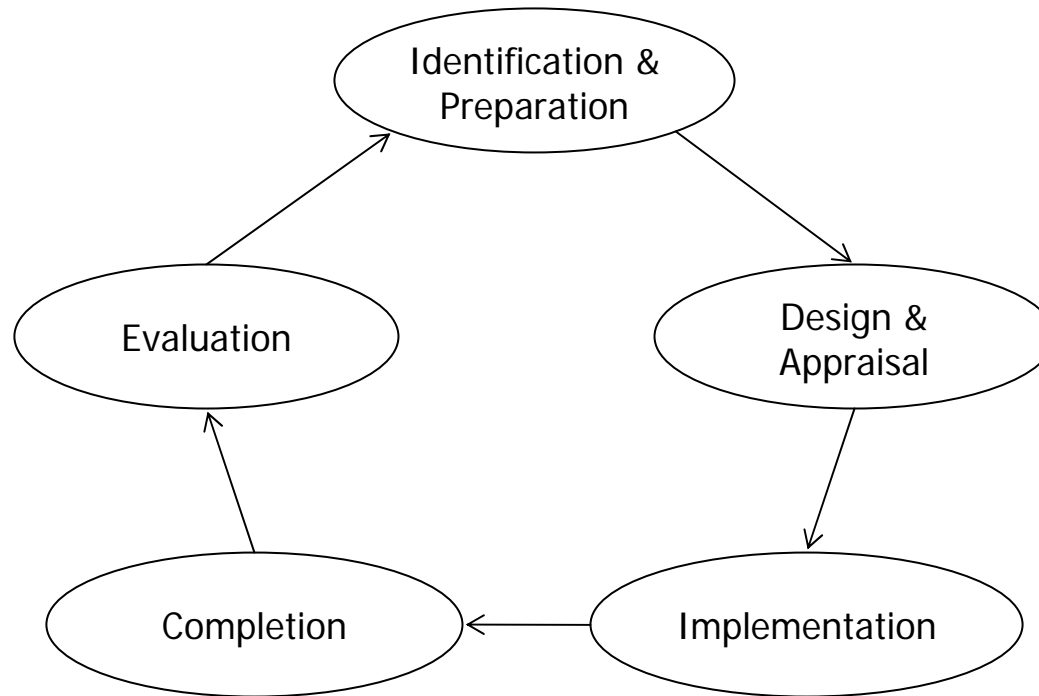
Lucía Fort
Sr. Gender Specialist
The World Bank
lfort@worldbank.org



Examples of Monitoring

	<i>Infant Health</i>	<i>Girls' Education</i>
Policy Monitoring	Decreasing Infant Mortality Rates	Increasing girls education attainment
Program Monitoring	Information on pre-natal care targeted to pregnant women	Expanding capability of school facilities
Project Monitoring	Awareness of good pre-natal care in 6 targeted villages	Number of girls completing primary education

The Project Cycle



THROUGHOUT THE PROJECT CYCLE, PROMOTE PARTICIPATION AND CONSULTATION AMONG STAKEHOLDERS

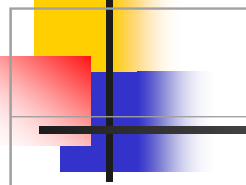


Generic Project Results Framework

	Narrative Summary	Performance Indicators	Means of Verification	Important/Key Assumptions
Development Objective	Goal at the policy or national level	Measures to verify results	Data for verifying goals, objectives, outputs and activities	External factors that may positively or negatively impact project performance and results
Project Objectives			Who will collect and report Sources	Out of the project's control
Components / Outputs			Periodicity	
Sub-components Activities		<i>Inputs</i>		

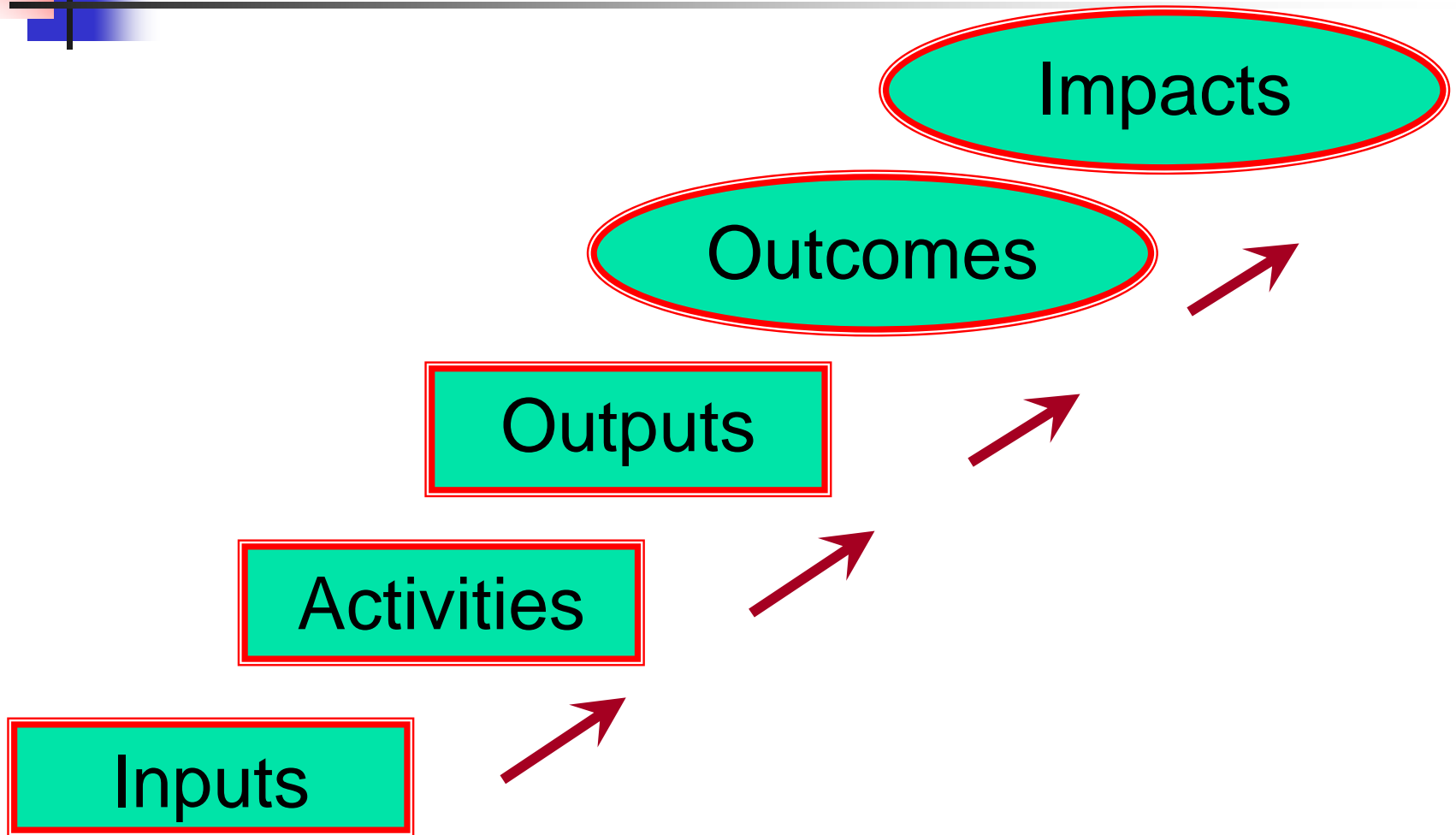
Source: Helen Hambly Odame. 2000. *Engendering the Logical Framework*. International Service for National Agricultural Research (ISNAR)

Key Questions for “Engendering” the Project Results Framework

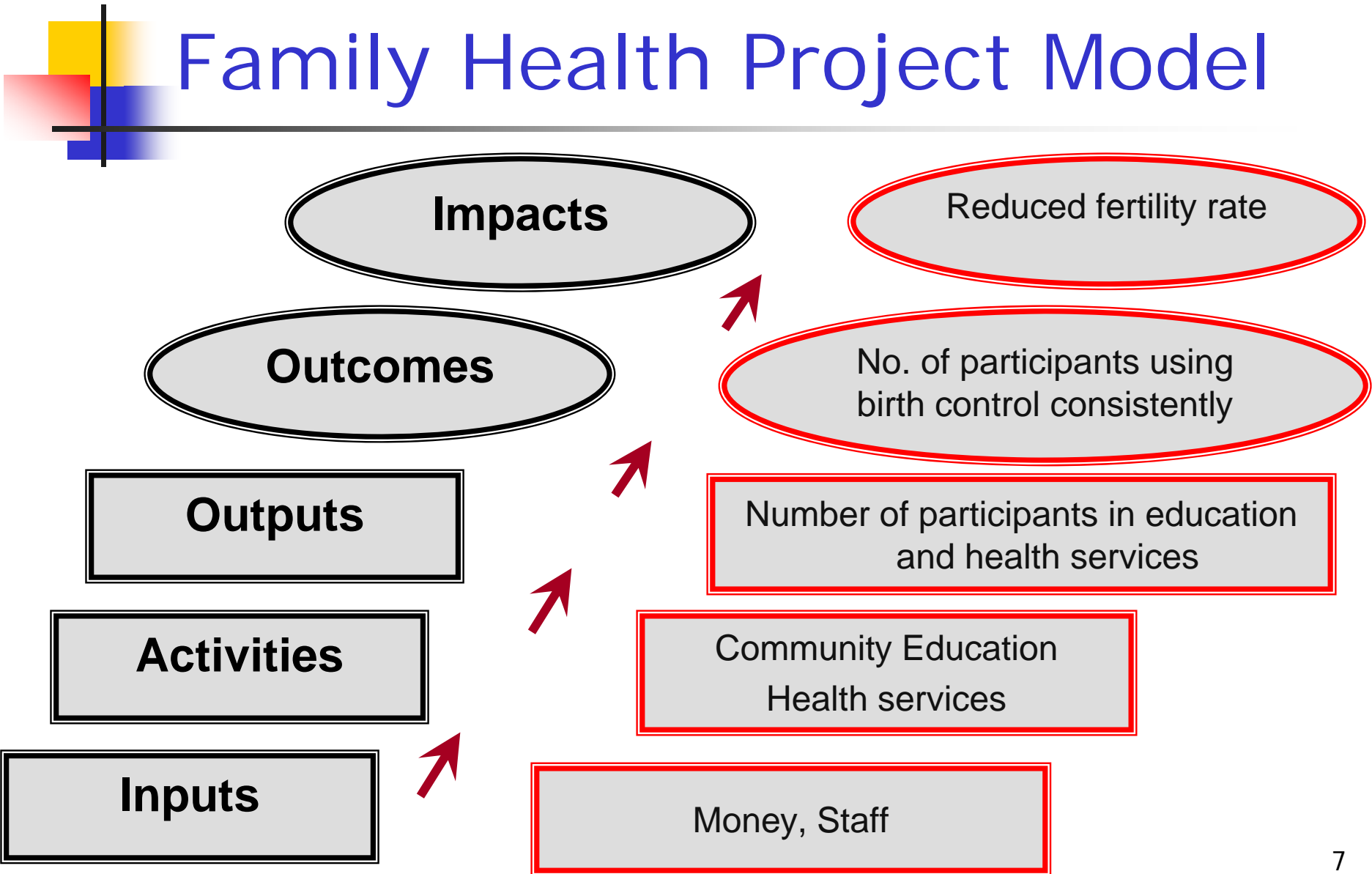


	Narrative Summary	Performance Indicators	Means of Verification	Important Assumptions
CAS Goal	Do gender relations influence in any way the goal at the policy/national level?	What measures can verify achievement of the gender-sensitive goal?	<p>Are data for verifying the goal, objectives, outputs and activities sex-disaggregated and analyzed in terms of gender?</p> <p>What gender analysis tools will be appropriate?</p>	What important external factors are necessary for sustaining the gender responsive objective(s)?
Project Objectives	Does the project have gender-responsive objective(s)?	What measures can verify achievement of the gender responsive objectives(s)?		What important external factors are necessary for sustaining the gender responsive objectives(s)?
Component s/Outputs	Is the distribution of benefits taking into account gender roles and relations?	What measures can verify that project benefits accrue to women as well as men, and to different groups of women?		What important external factors are necessary for achieving project benefits (especially benefits for women)?
Sub-components Activities	Are gender issues clarified in the implementation of the project?	<p><i>Inputs:</i></p> <ul style="list-style-type: none"> • What resources do project beneficiaries contribute to the project? • Is the contribution of women as well as men accounted for? • Are there external resources that account for women’s access and control over resources? 		What important external factors are necessary for achieving the activities and especially ensuring continued involvement of men and women participants in the project?

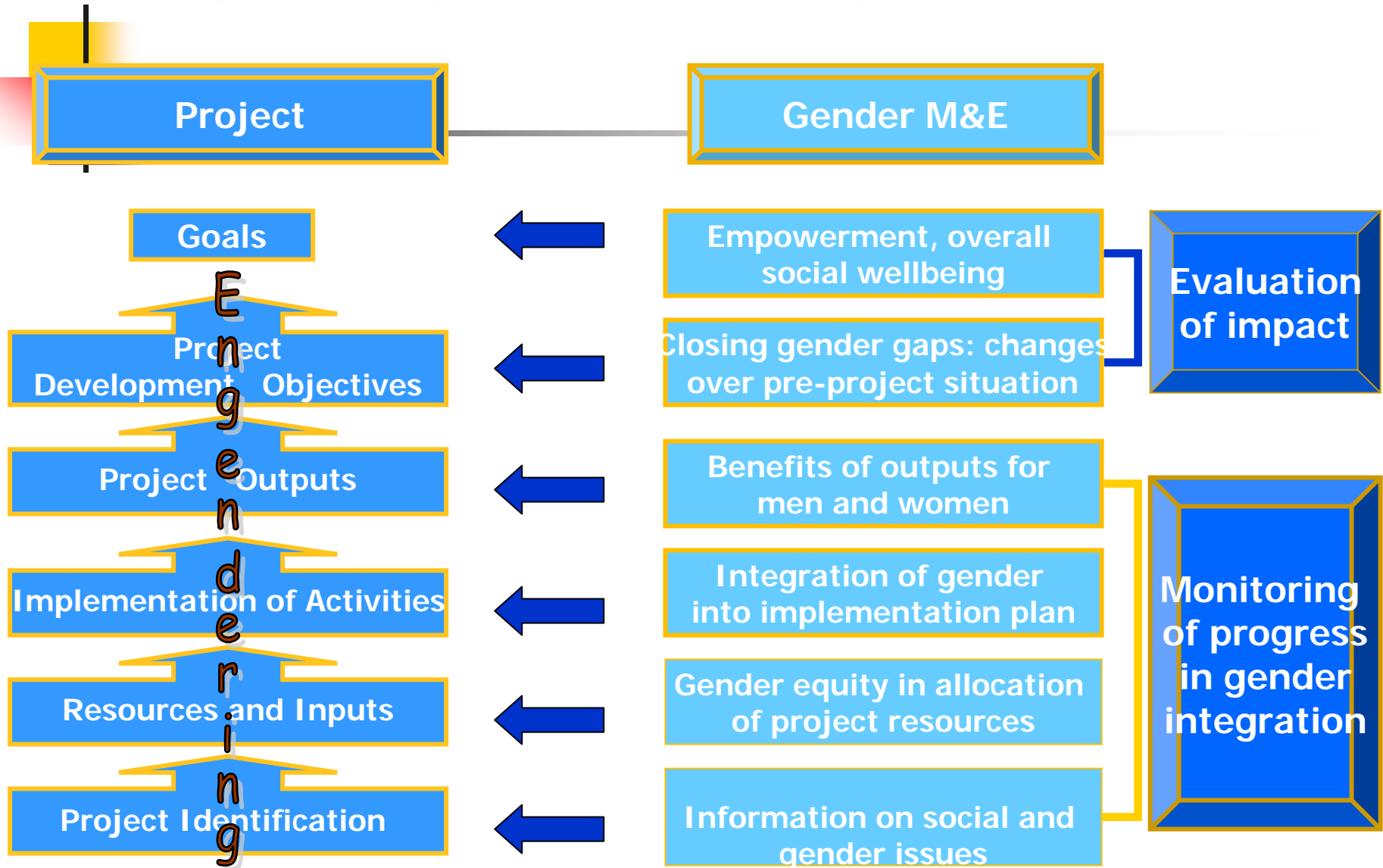
Generic Program Model



Family Health Project Model



“Engendering” the Project Logical Framework





Capacity Check List

- ✓ Do planning and implementing agencies have the capacity to identify and address gender issues? Has staff received gender-sensitive training? Will they?
- ✓ Have guidelines for gender related activities been developed and implemented?
- ✓ Are funds being allocated for gender capacity building?
- ✓ Is there an incentive structure (including rewards and sanctions) to encourage staff to address gender concerns?
- ✓ Is there a gender focal point or staff in charge of gender concerns within the PMU and PIUs, and Ministry?



Checklist for Assessing Gender Sensitivity of Data Collection

<i>Situations/Issues to avoid</i>	<i>Actions to ensure methods adequately address gender issues</i>
<ul style="list-style-type: none">▪ Sex disaggregated data is available but not used▪ Information is not collected from the right people▪ Household surveys are not the appropriate data collection method▪ Inadequate analysis of gender differences in control of resources within the household	<ul style="list-style-type: none">• Assess the availability of gender-responsive data before considering the need to collect new data.• Include additional questions on gender-specific topics• Use special methods to analyze gender differences in household decision-making and control of resources.• Use special methods to study domestic and public violence• Budget time and resources for follow-up field visits to interpret and further explore statistical findings.

Checklist for Incorporation of Gender into M&E



- ✓ Identify the gender dimensions of policy interventions for their potential impact
 - Do the policy interventions address women's and men's needs?
- ✓ Identify needs and opportunities for
 - increasing women's and men's productivity and production,
 - access to and control of resources, and
 - access to and control of benefits.
- ✓ Take into account cultural factors regarding the role of men and women in relation to project activities

Checklist for Incorporation of Gender into M&E (Continued)



- ✓ Take into account men's and women's views in the process of goal setting and program design and implementation.
 - Consult different groups and organizations representing women's and men's interests
- ✓ Do the performance indicators reflect gender concerns? If not, how might they do so?
- ✓ Involve both women and men in the participatory monitoring of these indicators
- ✓ Take measures to build the capacity for gender integration and analysis of planning and implementing agencies

“Engendering” the Project Logical Framework

