

Identifying and Setting up Gender Indicators for Monitoring and Evaluation at the Country Level

Lucía Fort
Sr. Gender Specialist
The World Bank
lfort@worldbank.org



International Instruments

- Convention for Elimination of Discrimination Against Women (CEDAW, 1979)
- Beijing Declaration and Platform for Action (1995)
- **Millennium Development Goals (2001)**



Millennium Development Goals (MDGs)

1. Eradicate extreme poverty and hunger
2. Achieve universal primary education
3. **Promote gender equality and empower women**
4. Reduce child mortality
5. Improve maternal health
6. Combat HIV/AIDS, malaria and other diseases
7. Ensure environmental sustainability
8. Develop a global partnership for development

Note: MDGs are mutually reinforcing; progress toward one goal affects progress toward the others. But, the third goal addresses gender equality specifically.



MDG 3: *Promote gender equality and empower women*

Official Indicators

- **Target 3A:**

Eliminate gender disparities in primary and secondary education, preferably by 2005, and in all levels of education by no later than 2015

Household	Economy and market	Society
Ratio of girls' to boys' enrollment in primary, secondary, and tertiary education	Share of women in wage employment in the non-agricultural sector	Proportion of seats held by women in national parliament



MDG3: Effect on Other MDGs

- Gender equality and women's empowerment are channels to attaining other MDGs —
 - universal primary education (MDG2A),
 - lower under-five mortality (MDG4A),
 - improved maternal health (MDG5A and B),
 - lower likelihood of contracting HIV/AIDS (MDG6A),
 - Reduce biodiversity loss (MDG7B).

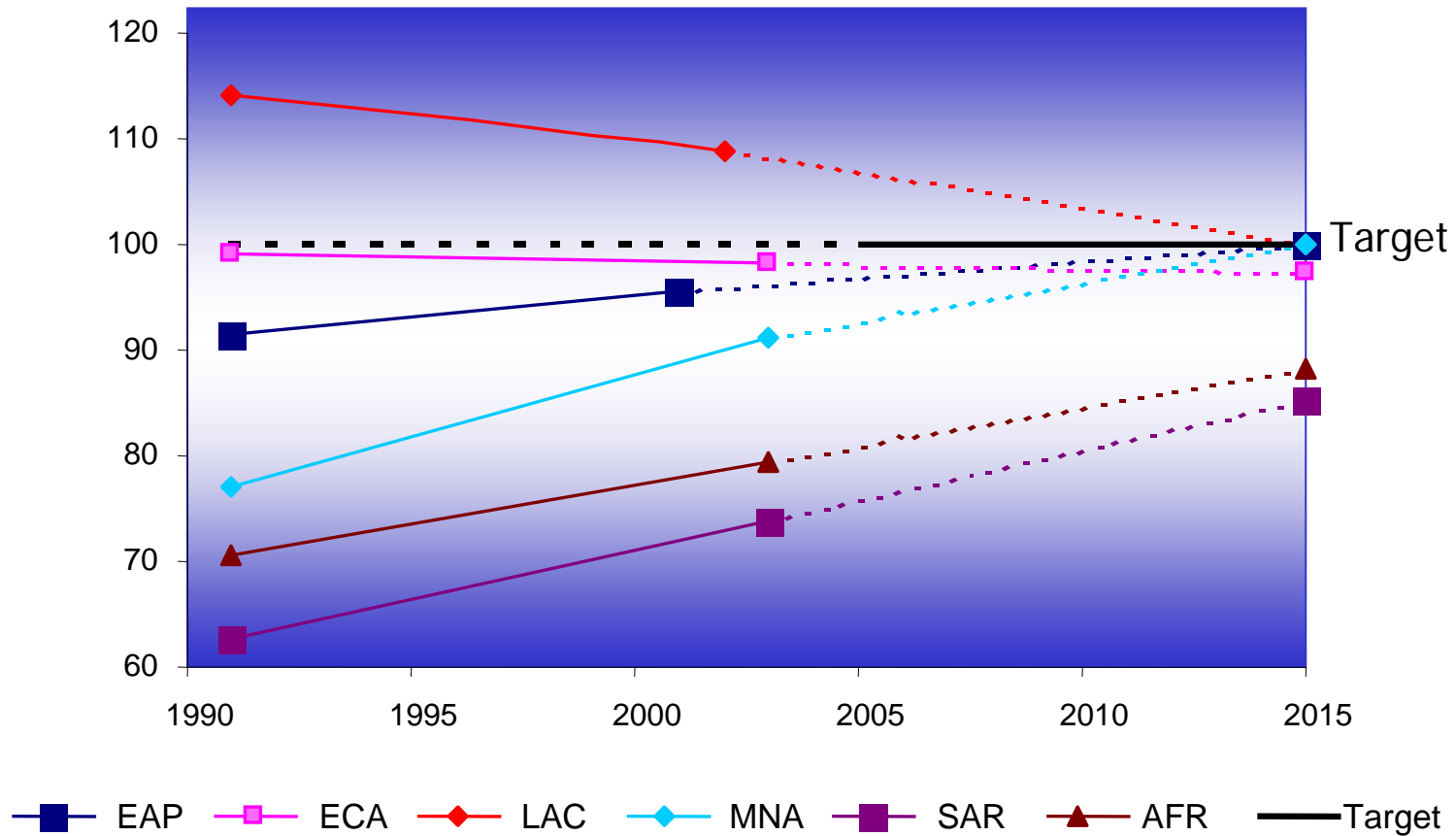


Progress towards MDG3

- **Progress in MDG3 and the four associated indicators**
 - Ratio of girls to boys in primary, secondary and tertiary education
 - Ratio of literate females to males among 15-24 year olds
 - Share of women in wage employment in the non-agricultural sector
 - Proportion of seats held by women in national parliaments
- **Inequality in progress**
 - By region
 - By income group
 - Fragile states
 - Within-country variation, for example, rural and urban areas
- **Key outliers in meeting the goal: Best and worst cases**

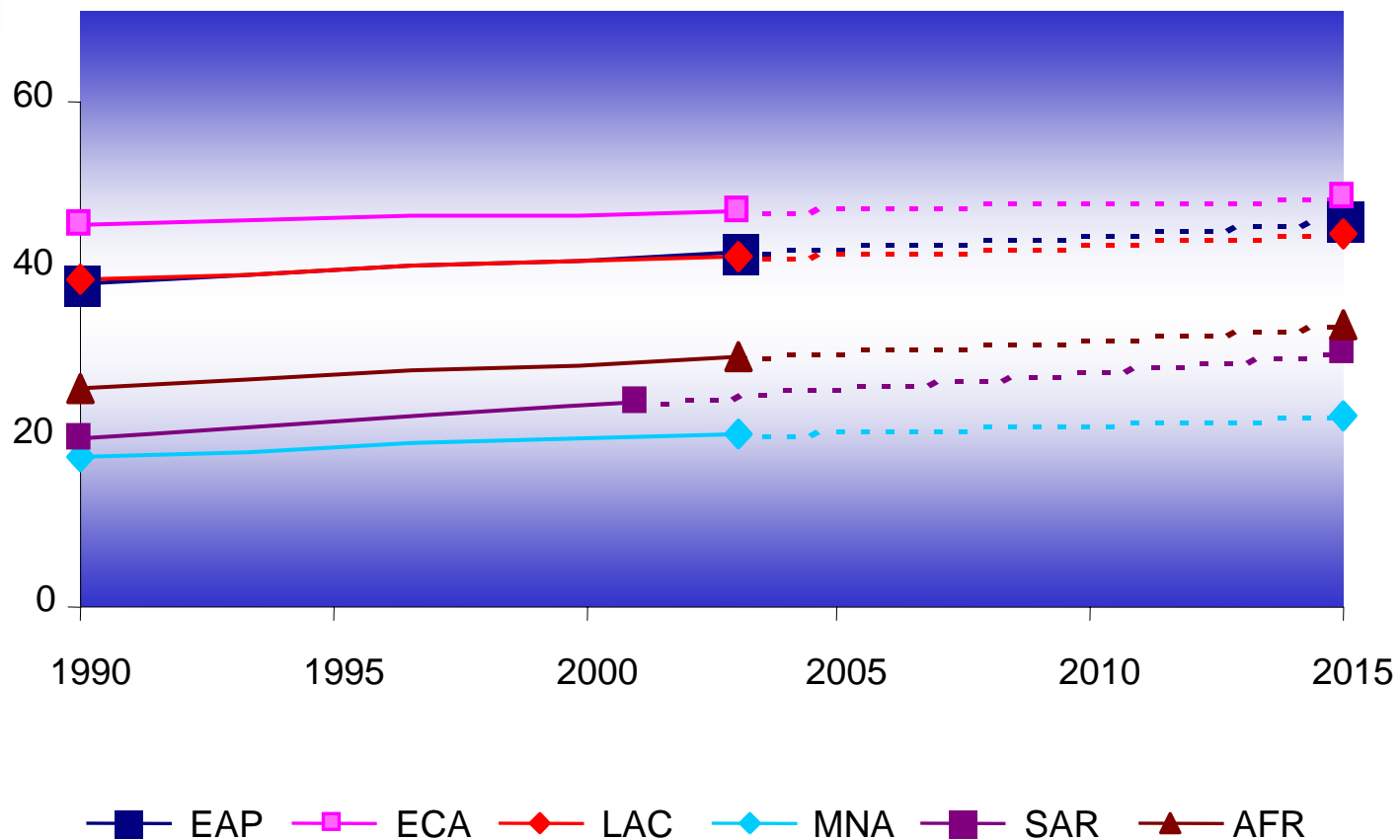
Ratio Female to Male Secondary Enrollment

(by region and target)



Source: World Development Indicators. The World Bank. DDP (Retrieved September 2006)

Women in Non-agriculture Wage Employment (% by region)



Source: World Development Indicators. The World Bank. DDP (Retrieved September 2006)

Limitations of the Official MDG3 Indicators



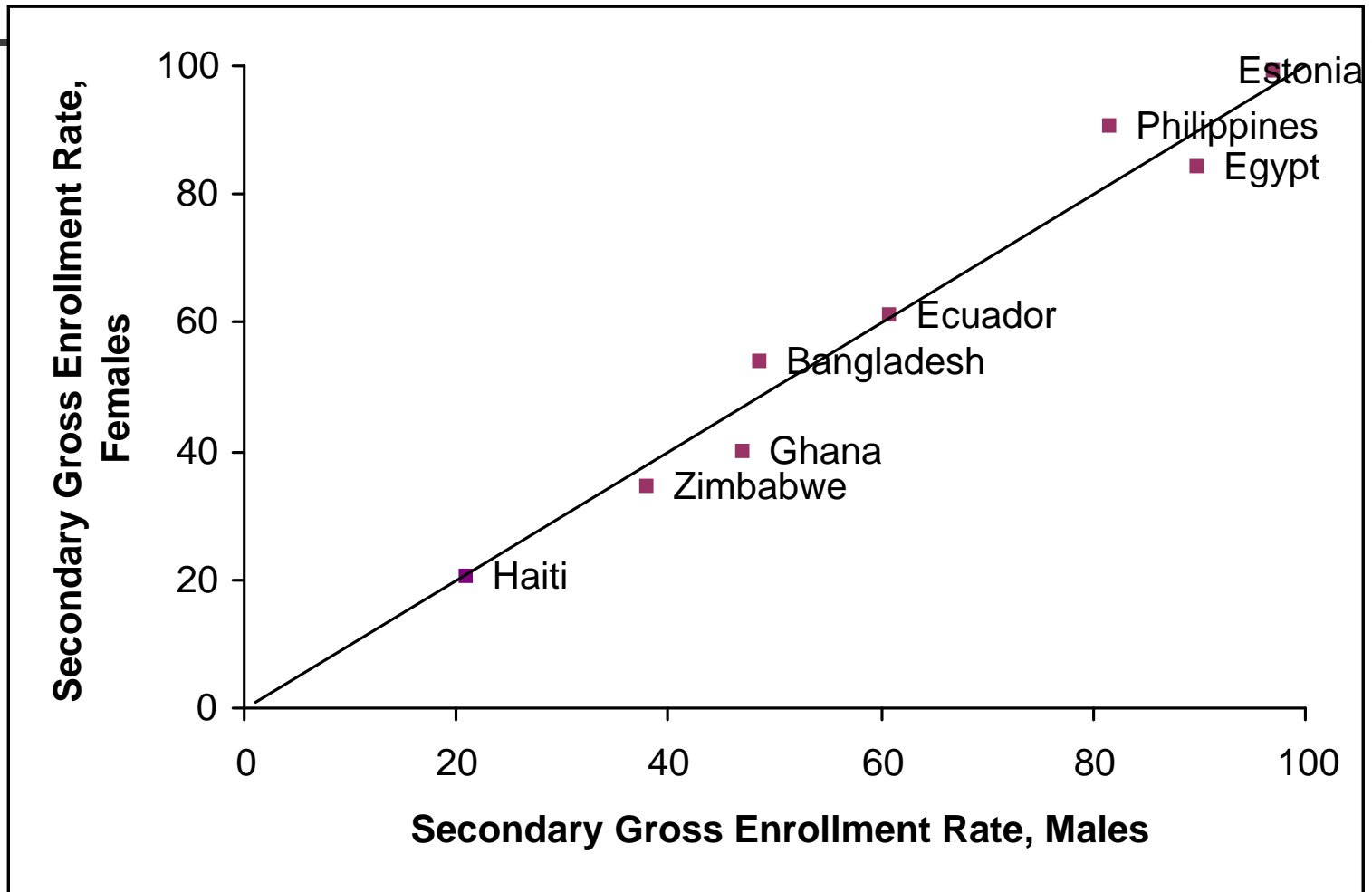
- Only partially measure gender equality
- Do not monitor key elements of gender equality (health outcomes and disparities in access to productive resources such as land, credit, and technology)
- Inadequate measurement of empowerment
- National-level indicators (averages) can mask inequalities within countries and among particular subgroups

Official MDG3 Target: Education



- **Ratio of girls' to boys' enrollment in primary, secondary, and tertiary education**
 - nothing about educational outcomes (Completion? Getting a job?)
 - difficult to interpret changes in indicators based on parity ratios are difficult to interpret.
 - measures women's status relative to men, rather than whether women are empowered

'Good' parity levels may hide huge enrollment challenges for both females and males



Source: World Development Indicators 2006



Other Indicators' limitations:

- **Share of women in non/agricultural wage employment**
 - Does not take into account each country's circumstances – such as share of non-agricultural employment as a percent of total employment.
 - Limited use for low-income countries where wage employment is not a main source of jobs.
 - Does not capture job quality/ability of women to work for pay (economic empowerment)
 - Does not quantify barriers inhibiting women from participating in the labour force.
 - Does not reflect women's the ability to control their fertility
- **Proportion of seats held by women in national parliaments**
 - Captures political participation only at the national level, but not at provincial or local levels

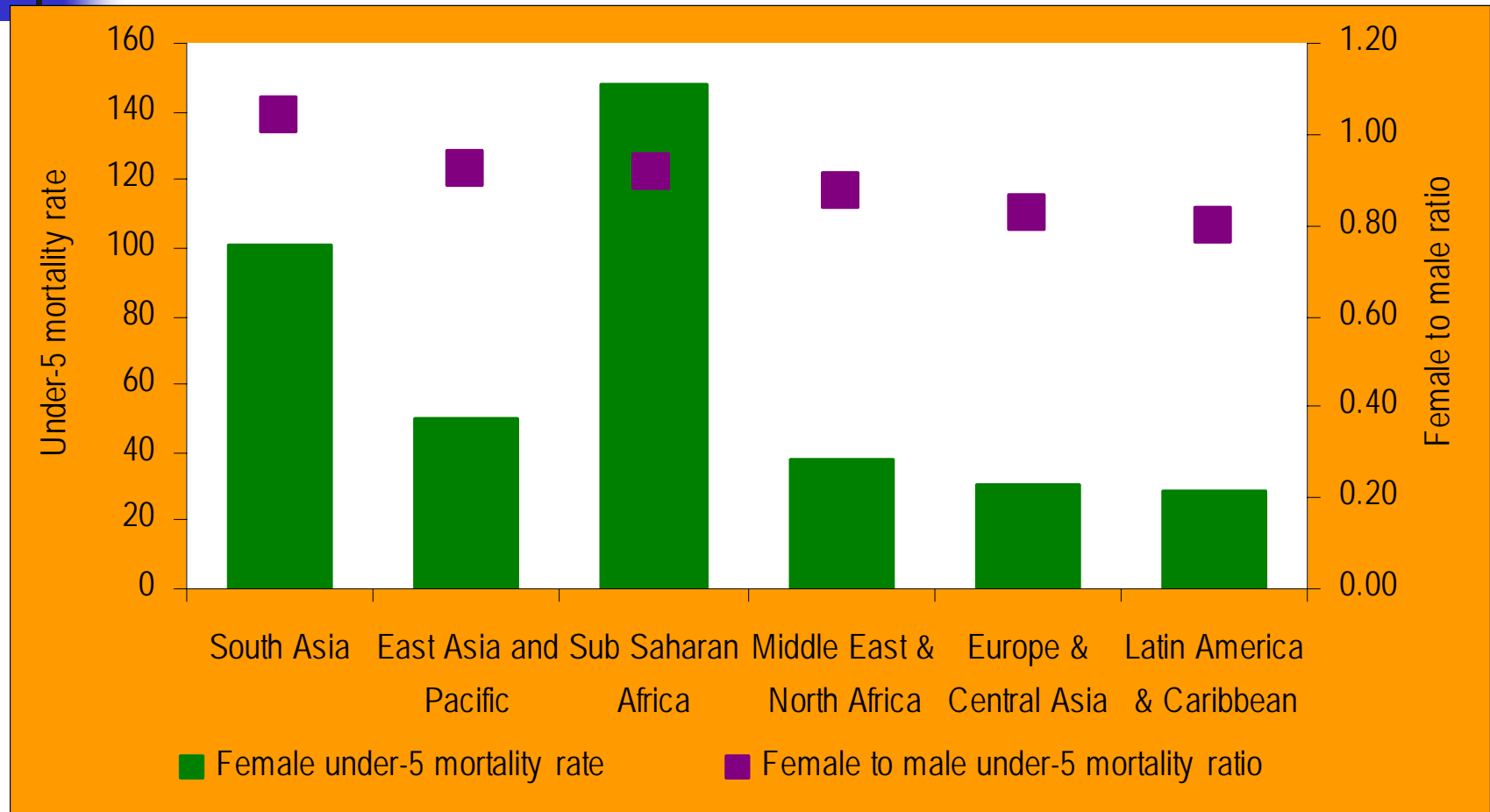


Recommended additional MDG3 indicators

Household		Economy and markets
<i>Modifications of official MDG indicators</i>	<i>Additional indicators</i>	<i>Additional indicators</i>
Primary completion rate of girls and boys (MDG 2)	Percentage of 15-19 year-old girls who are mothers or pregnant with their first child	Labor force participation rates among women and men aged 20-24 and 25-49
Under five mortality rate for girls and boys (MDG 4)		
Percentage of reproductive-age women, and their sexual partners, using <i>modern</i> contraceptives (MDG 6)		

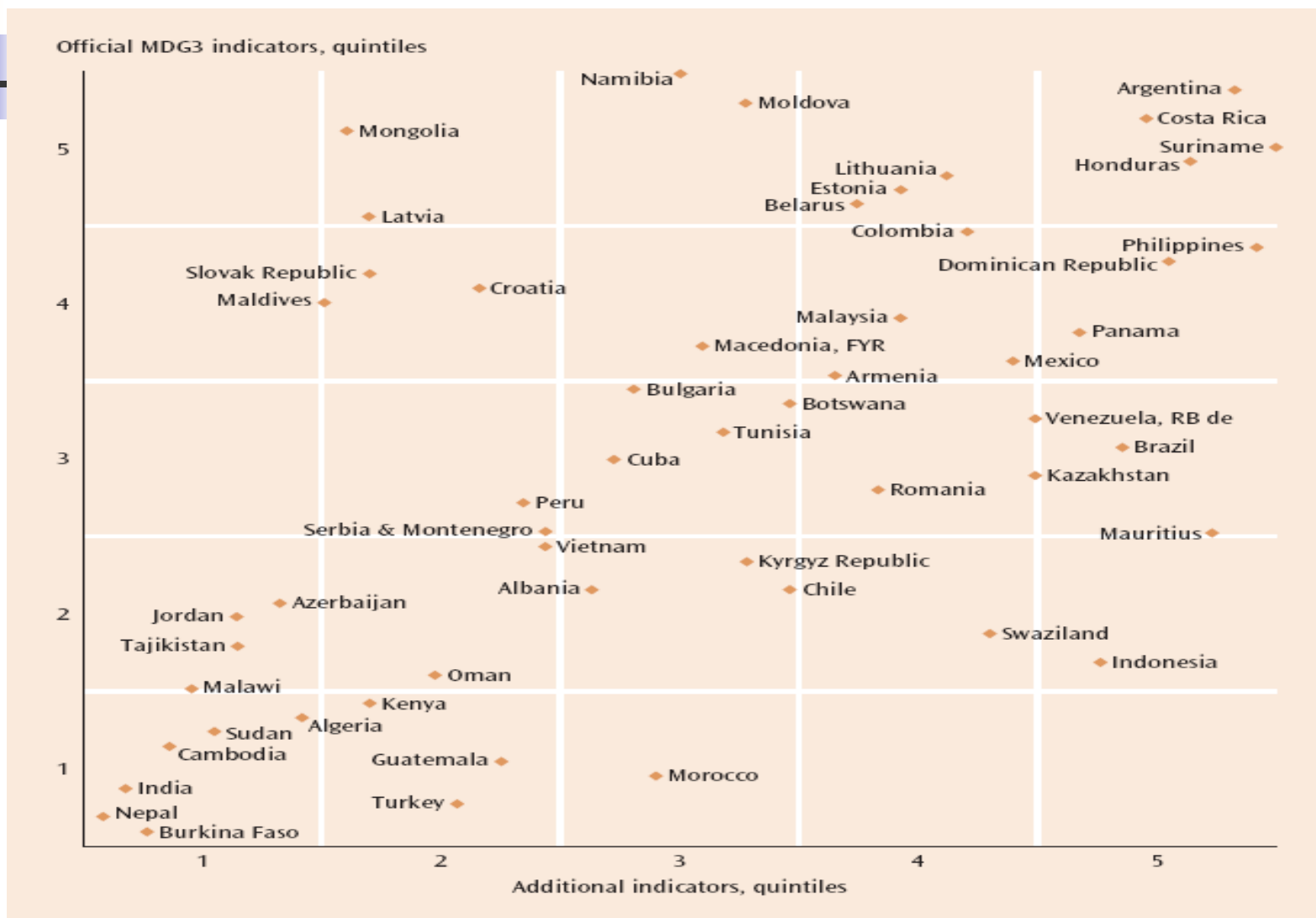
Monitoring child mortality reveals additional problem regions

Female under-5 mortality rate and female to male ratio, 2004



Source: World Population Prospects 2004.

Countries rank differently in official and in additional indicators



Source: World Development Indicators 2006



Gender Indicators for Monitoring and Evaluation at the Country Level: an example

- Bangladesh Bureau of Statistics
- Steps:
 - Status and Needs Assessment
 - Policy Frameworks
 - Data Availability
 - Technical quality control
 - Framework
 - Resources
 - Capacity Building
- Institutionalization of the process



Improving Gender Statistics and Indicators

- Availability
 - Social but not economic sectors
 - National averages but little regional, local, or income and ethnic differences
 - Data are collected by sex but not compiled, reported, analyzed or disseminated
 - Gender-relevant data may not be collected



Improving Gender Statistics and Indicators

■ Data Developers

- International Agency and Expert Group on Gender Statistics, IAEGGS – Global Forum
- UN System Agencies and ILO: UNICEF, UNESCO, etc.
- UN Economic Commissions
- Multilateral development banks
- Bilateral Donors, e.g., USAID
- National Statistical Offices
- Others



International Instruments' Monitoring & data sources

- MDGs: 2008 Gender Equality and Women's Empowerment Progress Chart (handout)
- UN Millennium Development Goals Report 2008
- UN CSW & DAW: CEDAW, Beijing Platform for Action
- UNDP: MDGs, PRS
- OECD-DAC Gender Equality Group
- UN Economic Commissions: ESCWA, UNECE, ECLAC
- World Bank GenderStats



Improving Gender Statistics and Indicators

- Current and Future Plans
 - Reviewing key instruments and data collection tools for gender integration: PRS, household questionnaires, etc.
 - Partnerships to develop data for new areas
 - Violence against women
 - Informal or vulnerable employment
 - Access to assets, credit, property
 - Entrepreneurship
 - Infrastructure access and use
 - Sharing knowledge, experience and databases -- Gender Statistics and Data Portal
 - Capacity building at international, national, local levels