

World Development Report 2012

and its implications for the World Bank Group

Jeni Klugman
Director
Gender and Development Group
World Bank

Outline

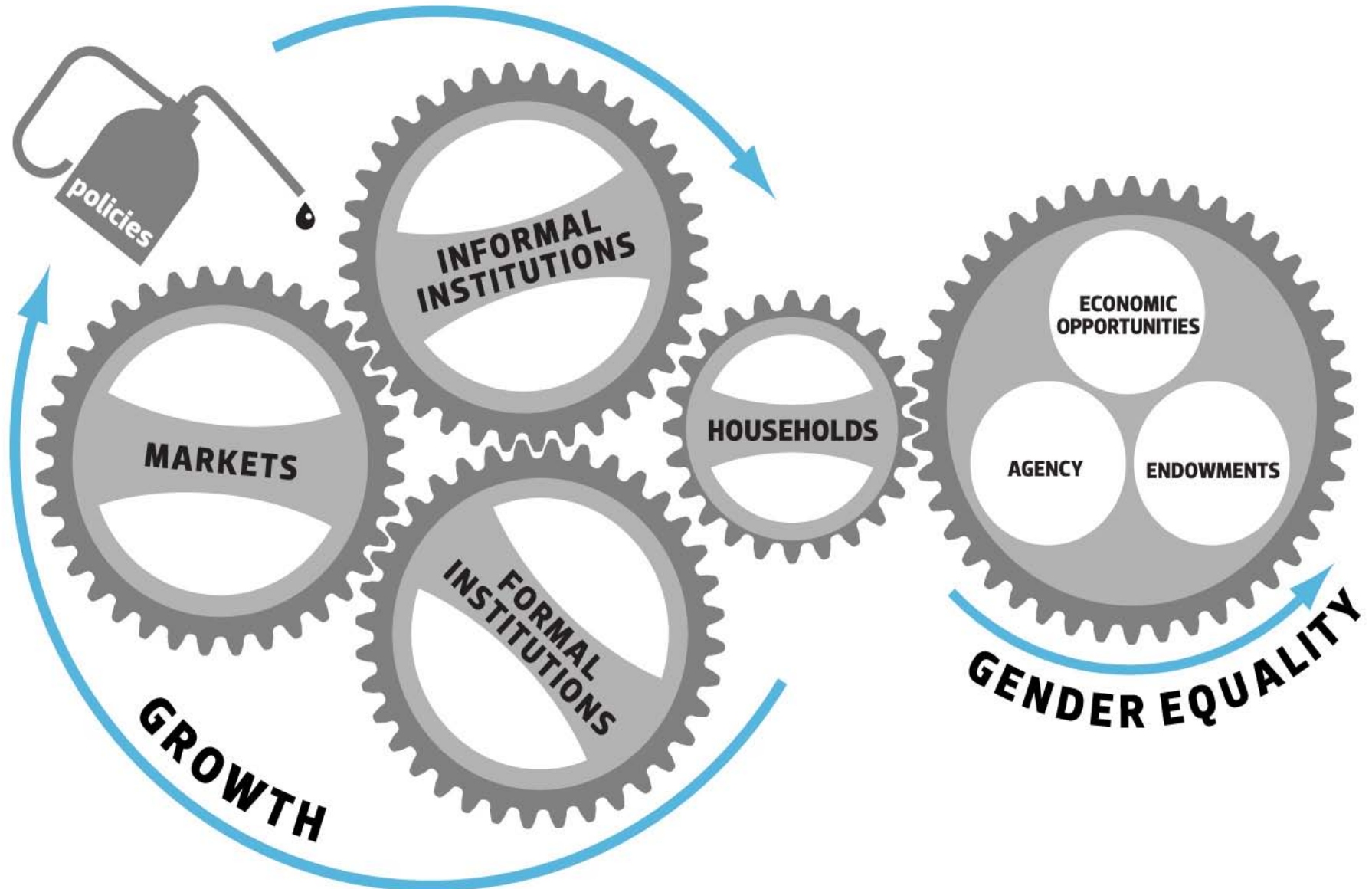
1. WDR 2012 Main Messages
2. Policy implications of the WDR 2012
3. Five strategic implications for the World Bank
4. What the World Bank was already doing on gender
5. Conclusion

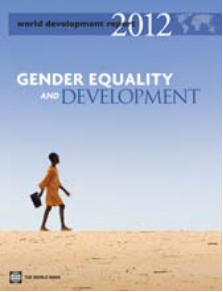
WDR 2012 Main Messages

Gender equality matters in its own right ...and also matters for development:

- ✓ **Productivity** gains
- ✓ Impact on **next generation**
- ✓ Rising **economic cost** of gender inequality with globalization
- ✓ **Women's voice can** lead to different policy choices

Analytical framework:





Progress and remaining challenges

Progress:

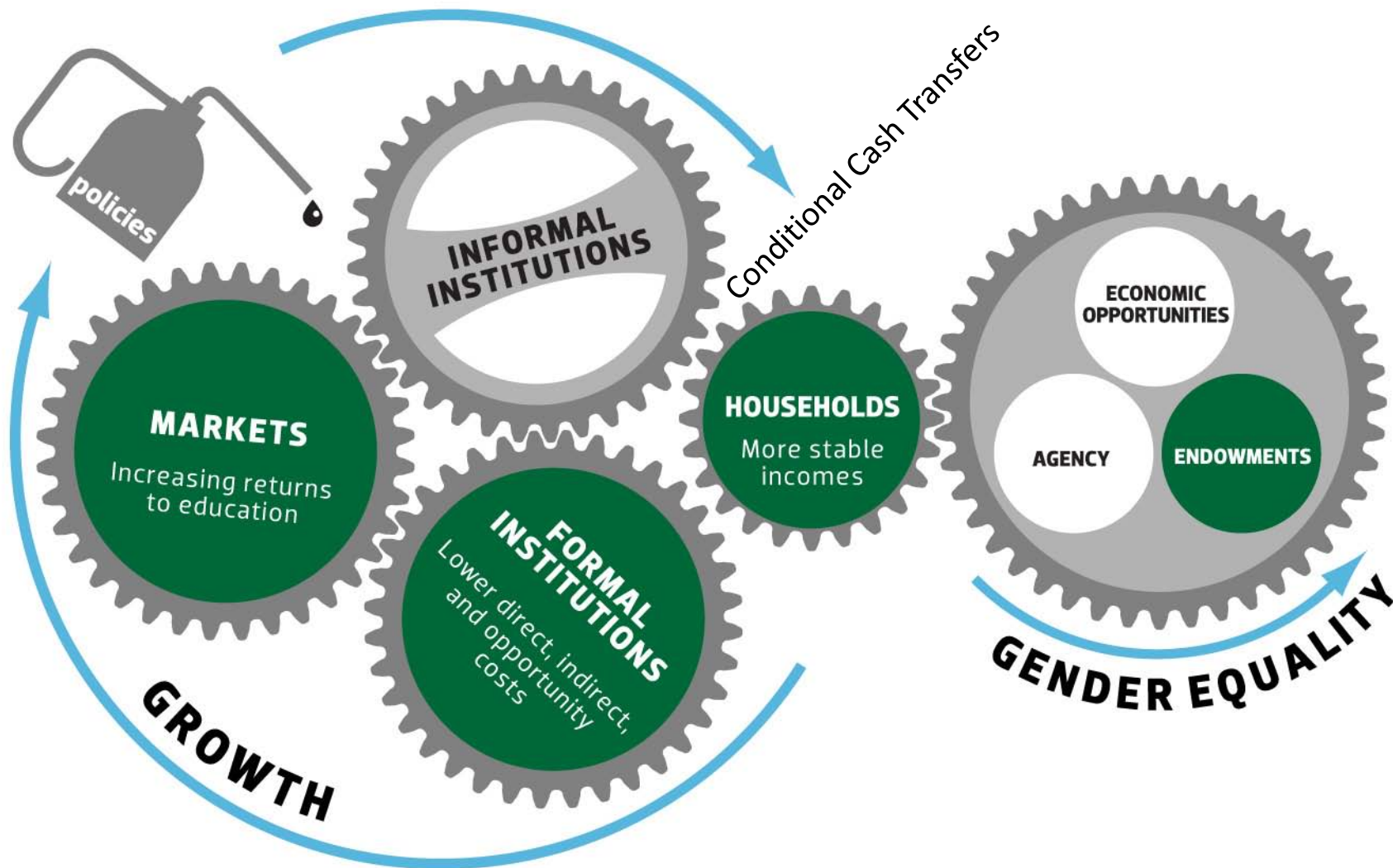
- Recognition of women's **rights**
- More girls in **school**
- Sharp decline in **fertility**
- More women in the **labor force**
- ... and pace of change is **faster**

But gaps persist:

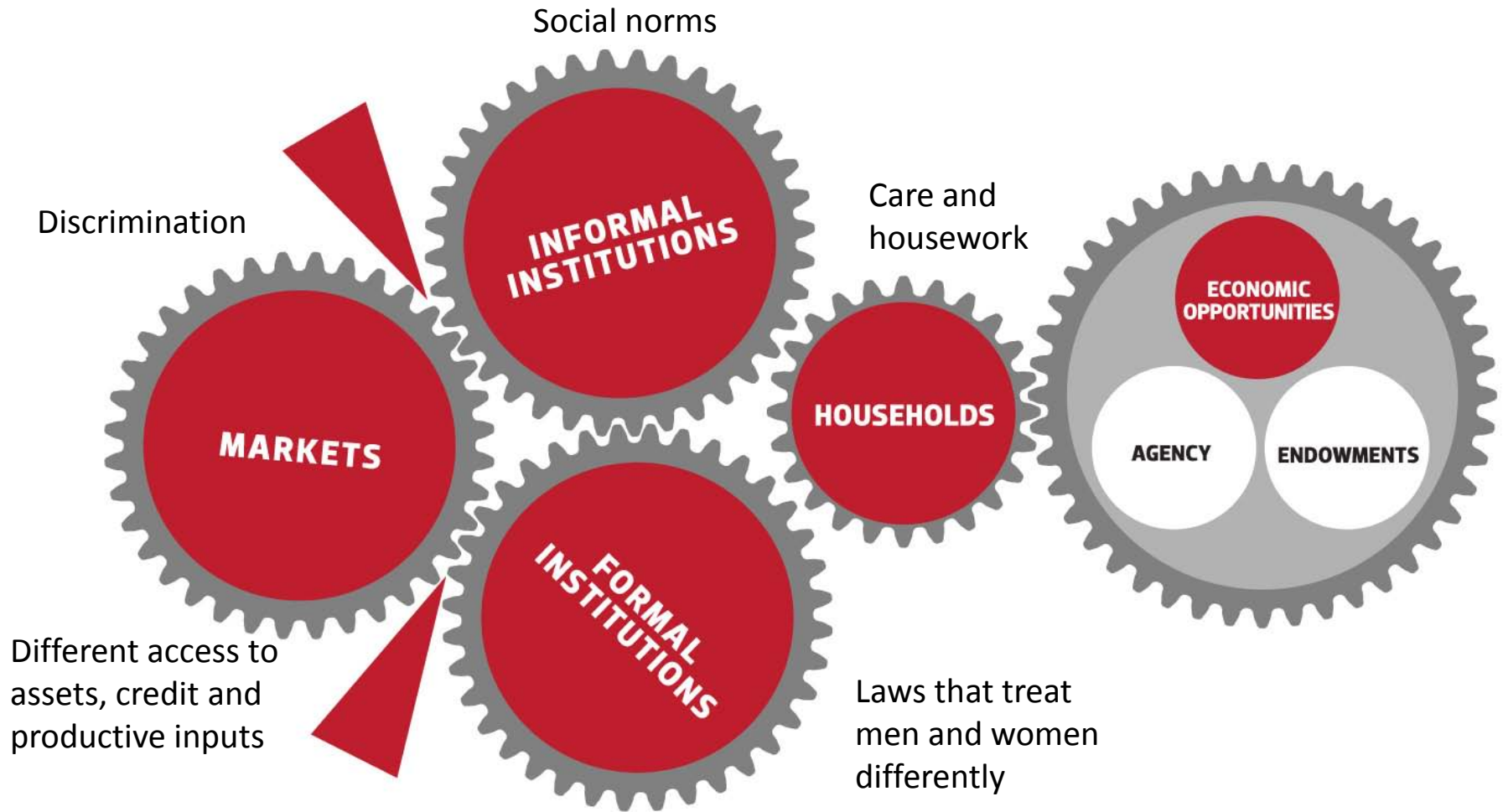
- Persistent **education gaps** for some disadvantaged groups
- Excess **female mortality** (at birth, in infancy, and in the reproductive years)
- Segregation in **employment and earnings** gaps
- Differences in **voice and decision-making power** (agency) in households and in society

Using the framework to understand progress:

The case of education



Using the framework to understand lack of progress: Employment segregation



Policy implications of the WDR 2012

Domestic policy priorities

- Reduce excess female mortality and close education gaps.
- Improve access to economic opportunities
- Increase women's voice and agency
- Limit the reproduction of gender inequality over time.

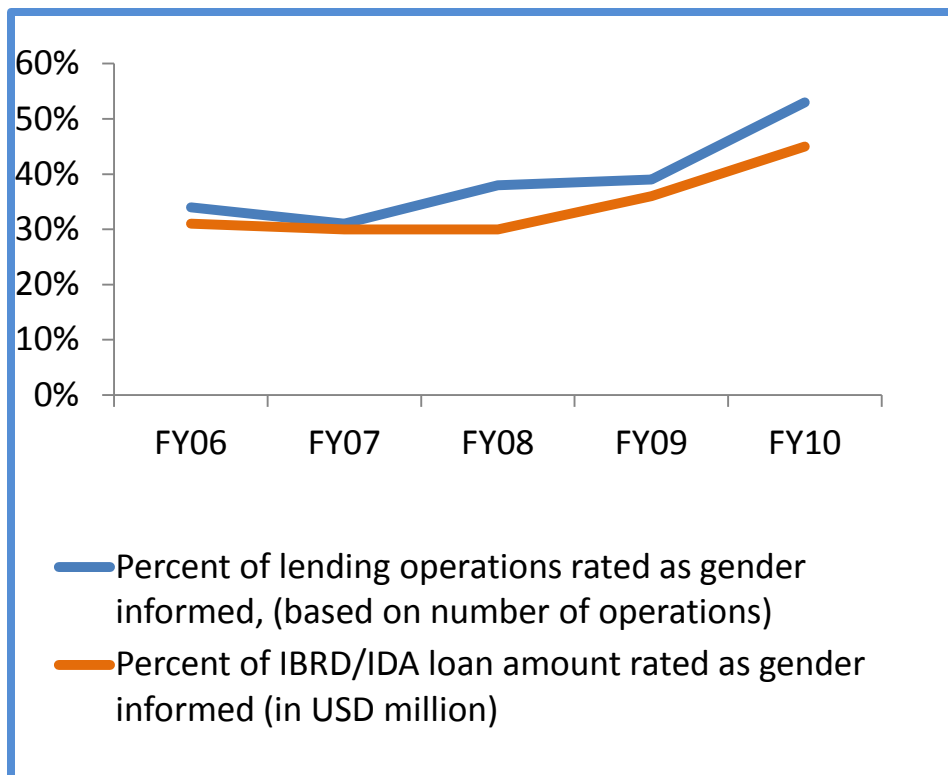
Role of the international community

- Support domestic efforts, through:
 - Financing
 - Knowledge and evidence
 - Fostering innovation and learning
 - Partnerships

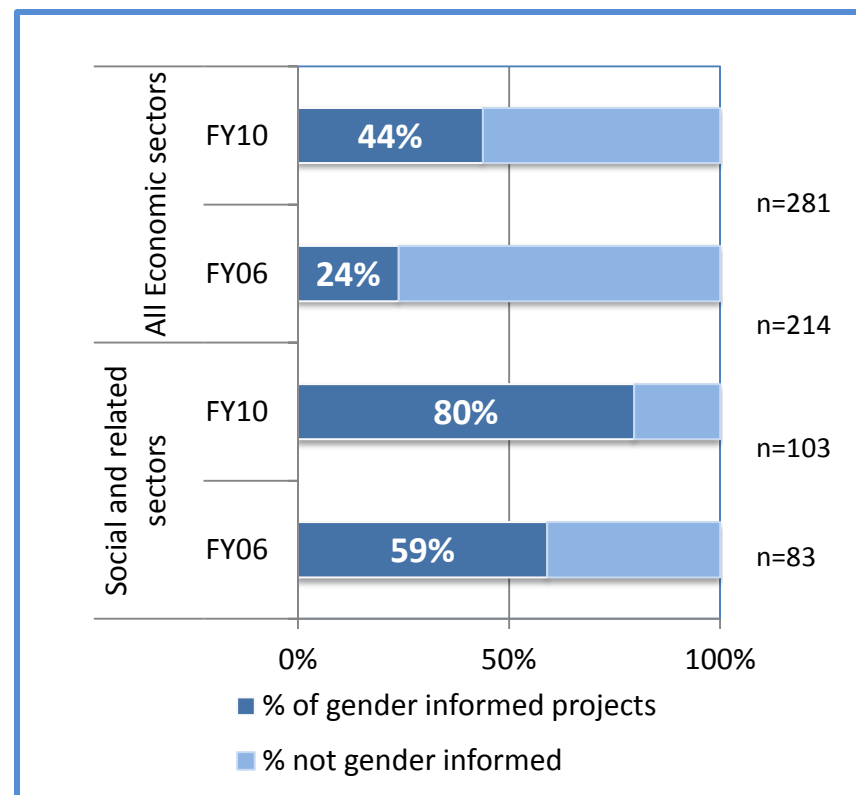
What the World Bank was already doing on gender

Over the last 5 yrs, the WBG allocated more than US\$ 65 billion, or 37% of its lending to operations to improve girls' education, women's and mothers' health, and women's access to credit, land, agricultural extension services, jobs, and infrastructure.

Percent of lending operations and loan amount rated as gender-informed



Trend of Gender Mainstreaming in Lending Portfolio



What the World Bank was already doing on gender

Accelerate gender mainstreaming

- Gender equality in IDA16.
- Action plans to scale-up financing for reproductive health, education, social protection, agriculture, transport:
 - Education Strategy 2020
 - Learning for All
 - Health Development Strategy 2007-2017
 - Reproductive Health Plan 2010-2015
 - new Social Protection and Labor Strategy
 - Agriculture Action Plan FY10-12
 - New Environment Strategy
 - Guidelines for mainstreaming gender into transport
 - Gender and Energy strategies
- Improving integration of gender in Bank's CAS.
- Integrating gender into analytical work: Poverty Assessments, Investment Climate Assessments, Portfolio Expenditure Reviews.

Global initiatives to improve the evidence-base

- School-to-work transition for young women: Adolescent Girls Initiative
- Women's entrepreneurship pilots (WB-IFC)
- Increasing school enrollment of girls through CCTs.
- Results-based financing to promote better health with special focus on women

Increasing data and knowledge

Data

- Living Standard Measurement Study (LSMS) surveys
- ADePT software
- GenderStats
- Open Data Initiative

Knowledge products and toolkits

- WDR 2012
- Global, regional, and country analytical work
- Impact evaluations
- Policy notes and 'gendered' lessons from projects.
- Toolkits and guidelines to mainstream gender into operations: agriculture, transport, etc.

Strategic Implications for the WBG

1. Informing country policy dialogue and raising awareness
2. Enhancing country level gender diagnostics
3. Scaling up lending for domestic priorities
4. Increasing the availability of gender-relevant data and evidence
5. Leveraging partnerships

In sum

- Significant efforts underway – and WDR 2012 is a major opportunity to ramp up effectiveness of current policy and programs
- Other...