

Gender Equality and Development in Indonesia

By:

Chitrawati Buchori
and Lisa Cameron



THE WORLD BANK

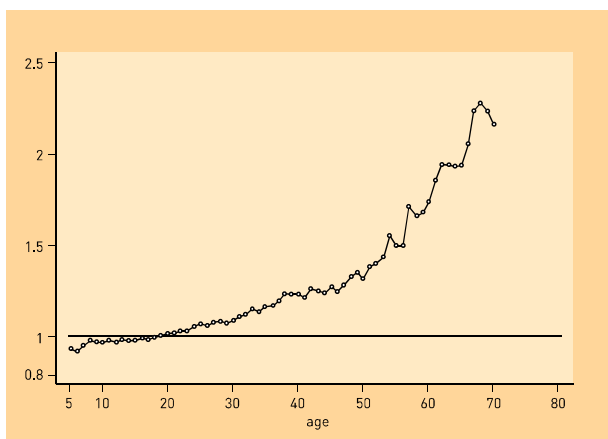
Gender Equality and Development in Indonesia

Significant progress has been made towards achieving gender balance in a number of key areas

- There has been a steady and impressive improvement in women's relative educational position over time. For those currently under-20 there is very little gender differential. Slightly more girls than boys are enrolled in primary and lower secondary school. Only at upper secondary and tertiary levels are more boys being educated than girls.

Older women remain less-educated than men

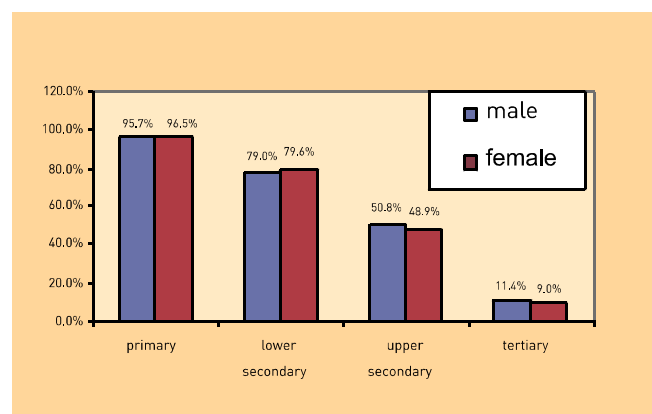
(Male/Female Ratio of Years of Education by Age)



Source: Susenas 2002.

but there is little gender gap in current enrolment rates...

(Net Enrolment Rates by Gender, 2002)

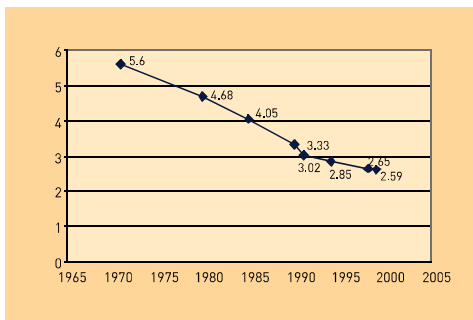


Source: Susenas 2002.

- Impressive progress has been made in reducing the fertility rate which has fallen dramatically from 5.6 births per woman in 1971 to 2.6 in 2000. It however remains above the replacement rate of 2.1. Maternal mortality rate was estimated to be 396 per 100,000 live births in 2001. This is significantly higher compared to neighboring ASEAN countries.

Women have gained more control over their fertility...

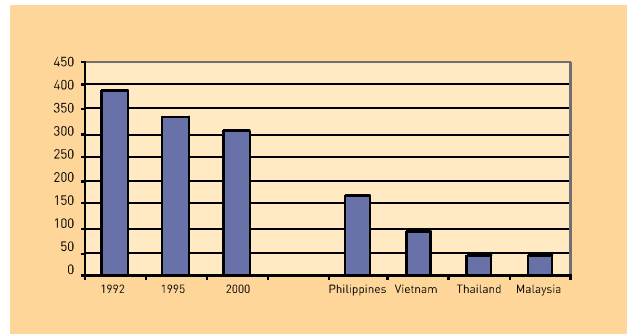
(Births per Woman)



Source: ww.bps.go.id/sector/population/table7.shtml.

Maternal mortality rates have fallen (but still high by international standards).

(Maternal deaths per 100000 births)



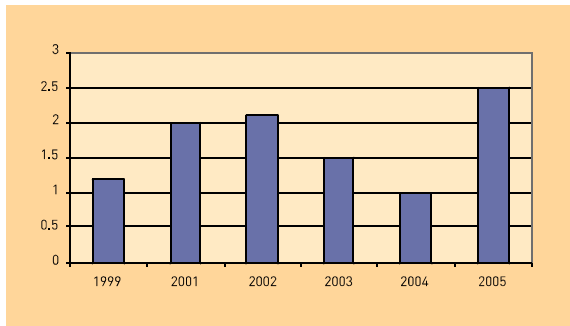
Source: UN Human Development Report 2003 and DHS 1994, 1997 and 2002.

Globalisation and decentralisation present both opportunities and further challenges for attaining gender equality

- Overseas migration is not only one of the largest and growing sources of employment among the rural poor, but it is also one of the chief safety net mechanisms with which the poor deal with economic shocks. The number of registered Indonesian overseas migrants is around 400,000 annually, and of about 80% are women. Around 90% of women migrants work in the informal sector, mostly as domestic helper. The majority of the overseas male workers worked in the formal sector as construction workers.

Remittances are an important source of foreign exchange and a growing income source for poor rural households.

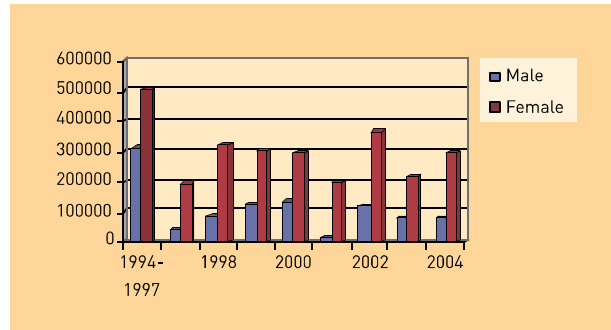
(Remittances received by Indonesia in US\$ billion)



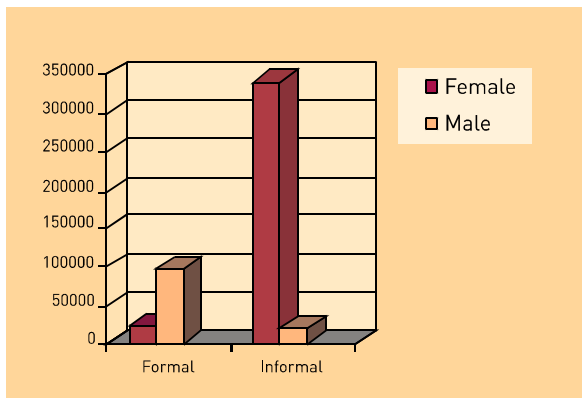
Source: Clippings from various newspaper.

Total number of overseas migrant workers are increasing over the years, and women outnumbered men.

(Numbers of Indonesian overseas migrant workers)



Source: www.tki.or.id



Overseas migration also brings with it a full range of economic, social, and rights-related problems. Severe for all Indonesian workers, these problems are particularly difficult for women migrant workers because as domestic helpers, the employment relationship with their employer is not recognized or protected. Overseas women workers are vulnerable to persistent violations of worker rights, such as rape, harassment, cuts in wages and dire working conditions.

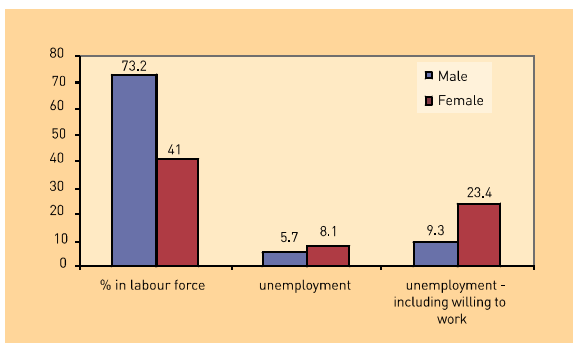
- Decentralization presents an opportunity for women to play a greater role, but it has also indirectly decreased women's participation in the executives. The civil service has a gender imbalance at the higher levels, and especially higher levels at sub-national levels. Therefore as decision-making in the public sector moves down from the Central Government to Local Governments, the level of women's participation in decision-making is decreasing. Parallel to the lower representation of women in the decision making bodies, there are growing numbers of districts issuing gender-biased local laws (*Perda Maksiat* for instance), or even those that discriminate against women. Gender perspective is lacking amongst the local government officials and other decision-making institutions, resulting in policies that are gender insensitive although most of these policies are initially meant to provide protection to women.

However, labor force discrimination remains evident across the nation

- Only 41% of women versus 73% of men are either working or looking for work. Of those in the labor market, women are more likely to be unemployed than men. However this statistic disguises the fact that many women, although not actively looking for work, would like to work. Women are over-represented in unpaid and low-paid jobs, and are underrepresented in the more lucrative formal wage sector.

Women are less-likely to work than men but are more likely to be unemployed.

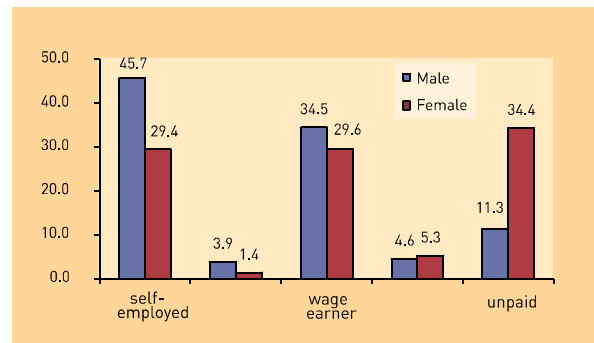
(Labour Force Statistics, percent)



Source: Susenas 2002.

Women are less likely to be working in the formal sector where earnings are highest

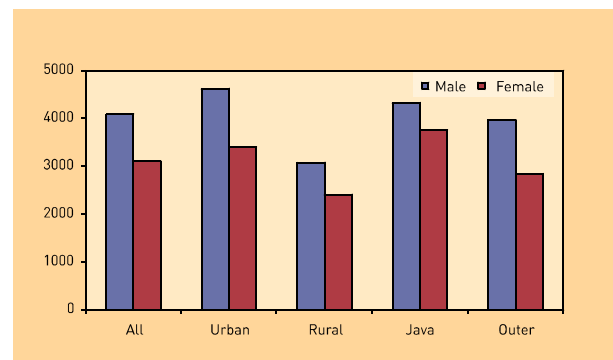
(Work Status by Gender)



Even in the formal sector, female employees earn on average only 76% of male earnings.

(Average Hourly Wages by Gender. Rp)

- Within the formal sector, women receive lower wages. This is not because women have less education or experience. On average, female employees earn only 76% of male earnings. Eighty percent of the difference between men's and women's wages is due to the unequal treatment of women. A woman with exactly the same education and experience as a man will earn on average only about 81% of what the man earns. The wage gap is larger in the outer Islands than in Java, and larger in urban areas than in rural

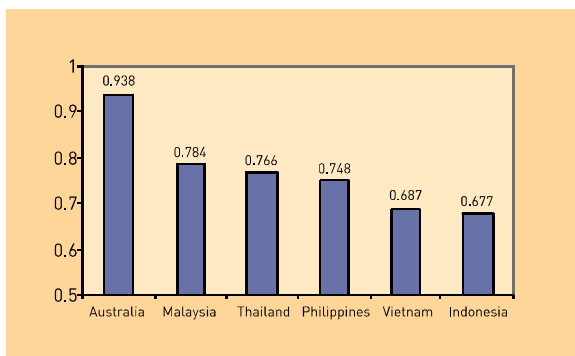


Source: Susenas 2002.

And violence against women remains prevalent

- Women are more often the victims of violence than men, and they are also often the victims of violence in regions of civic strife and military conflict. Aceh, Maluku, Poso, Papua and Central Kalimantan are among the areas where community and military violence has seriously affected the lives of women, men and children. In Aceh, 1,694 women were left widowed during military operations (DOM), and another 4,126 were left widowed during post-DOM. In Maluku, a stigma is afflicted on abandoned pregnant and child bearing women. In March 2001, there were 1.1 million internally-displaced people (IDP), most of them are women, children and the elderly.
- Reported gender-based violence is increasing. There were 5163 cases of violence in 2002, a 63% increase from the previous year. These cases include harassment to women migrant workers, domestic violence as well as crime. A year-end data at the Jakarta Police Headquarters, for instance, show that the number of reported rape cases has soared significantly – by 25% - in 2003 despite a declining trend among recorded crimes in the city. Domestic violence topped cases of abuse against local women in West Nusa Tenggara. Economic problems have been blamed for the increase of those cases. According to APIK, there were 43 cases of VAW handled by the group in 2000. This increased to 70 cases in 2001 and drastically rose to 729 cases in 2002.

Indonesia's performance on gender inequality lags behind neighboring countries



Source: UN Human Development Report 2003.

In 2002, Indonesia's GDI¹ performance ranks 91 out of 144 countries. This is because women's advantages in life expectancy were more than offset by a lower literacy rate of 86% (compared with 94% for men), women had fewer mean years of schooling than men (6.5 years compared with 7.6 years), and a smaller share of earned income (38% compared with 62%). GDI performance across the country is also irregular with significant variation even between neighbouring district.

¹ The gender-related development index (GDI) reflects the differences between males and females in terms of life expectancy, the literacy rate, mean years of schooling, and wages. The higher are these for women relative to men, the higher the value of the index.