



THE WORLD BANK



Evaluating Impact: Turning Promises into Evidence

Palestine Cash Transfer Program

**Tahani Sayyed
Rasha Qdisat
Ayman Sawalha
Khalid Barghoti
Mahmoud Abdel Hadi**

**Muhammad Shaheen
Mo'yad Ali Shehada
Adel chabab
Bohaisa Asad
Khaled Rajab**

1. Background

- A cash transfer Program is well underway in Palestine through funding from the World Bank. Beneficiaries are selected based on a Proxy Means Test Formula. The Program targets the Poorest of the poor (poorest quintile)
- Currently around 5,000 HHs received a regular benefit of US\$ 200 on average depending on family size. Additional 20,000 hh are on a waiting list pending available of funds.

- Recently a project for US\$ 5 million to support the food security of 20,000 poor HHs was funded. Each hh will get a one time benefit of US\$ 200. The Global Food & Fuel Trust Fund (GFFTF) funds the project through the World Bank.
- GFFTF requests an evaluation be carried out 3 – 6 months after the benefit was made.



2. Results Chain



Inputs

- Budget (\$5M).
- Human Resources (staff (10), social workers (104) and consultants).
- Management Information System.
- Selection and Payment Mechanisms.
- Infrastructure, i.e. computers, furniture ...

Activities

- Verification for screening and targeting.
- Home visits to verify eligible beneficiaries.
- **Update of MIS data base.**
- **Determine beneficiary households.**
- Distribute Cash benefit.
- **Prepare list and schedule of distribution.**
- Issue and deliver cheks to beneficiaries.
- Resolve payment problems, e.g. authorizations, difference in names due to typing errors ...
- Build the capacity of HR in particular social workers and technical supervisors.
- **Assess need and develop training program and schedule. Contract trainers.**
- **Develop M&E system.**

Outputs

- Clean list's of beneficiaries prepared and distributed to payment points and relevant offices.
- X number of hh receiving the benefit (\$200).
- X number of social workers trained.
- M&E system in place.

Outcomes

- Use of cash for purchase of food items.
- Increase in food consumption in terms of.
- Improvement in quality.
- Varied types of food.

Long term Outcomes

- Improved health conditions of family members, (women, children), e.g. anemia.
- Change in food consumption pattern.
- Increase in income level.
- Improvement in households assists and savings.
- Improvement in hh satisfaction.

3. Primary Research Questions

- Efficiency (process evaluation)-later
- Impact
 - Has the project result in improving the conditions of beneficiaries, and to what extent?
 - Did the level of impact vary among different beneficiaries?
- Sustainability
 - What was the duration of the impact?

4. Outcome Indicators

1. Food consumption:

- % of change in food quantity
- % of change in food variety
- % of change in food quality

2. income:

- % of change in income of HH.

3. Assets and savings:

- % of change in savings of hh.
- % of change in assets value
- Type of additional assets purchased using the cash assistance.

4.

Outcome Indicators

1. Health

- Nutrition index change
- % of families that experienced change in nutrient index.

2. Education:

- Enrollment rate
- Scores change

3. Satisfaction

- % of change in HH attitudes.

5. Identification Strategy/Method

- Methodology: discontinuity regression design (RDD).
- Why??
- Because discontinuity in the intervention activity.

6. Sample and data

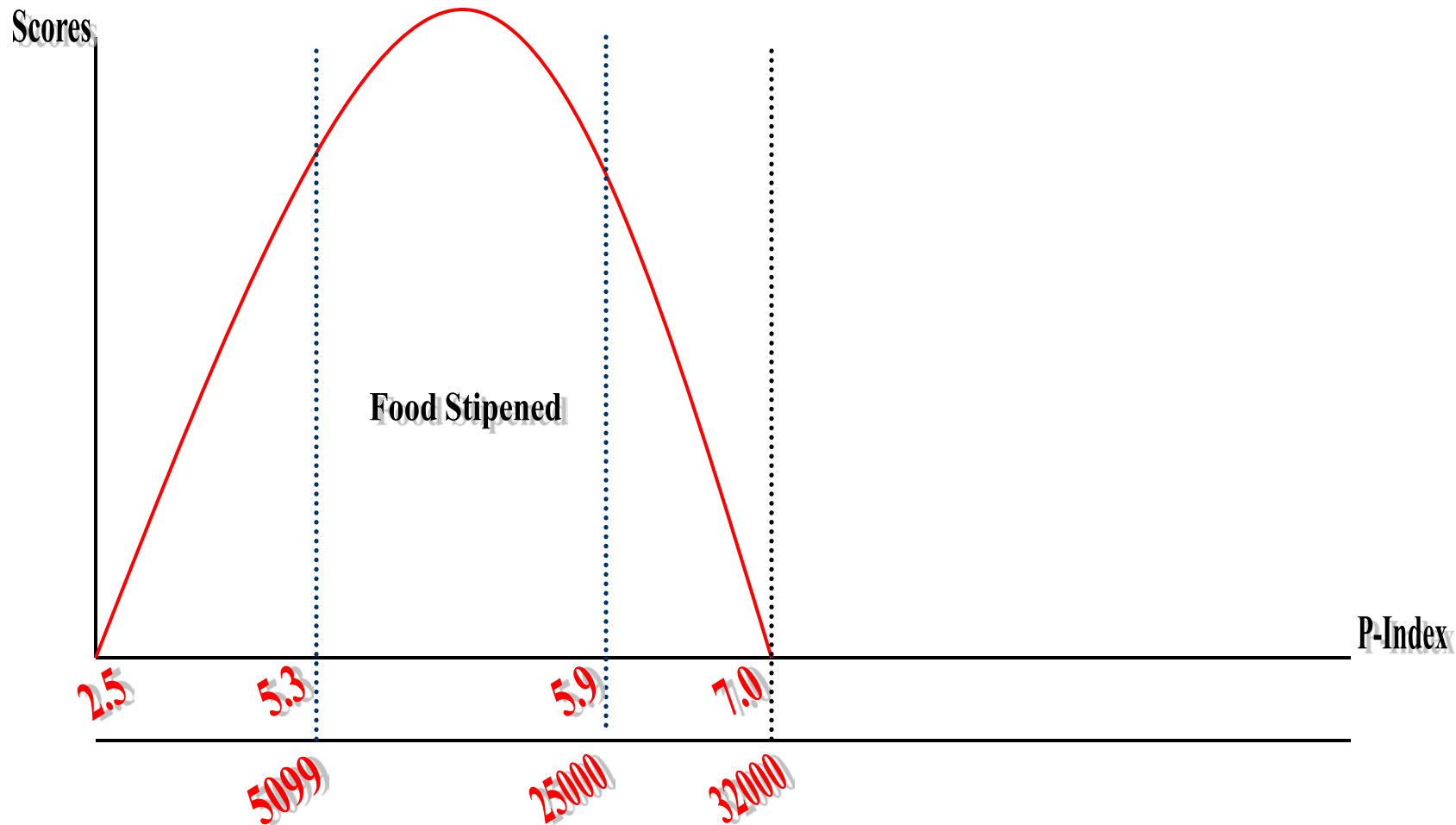
- ❑ Sample: calculated drawn randomly.
- ❑ Data collection: data will be collected through questionnaire.

❑ Before: data is available/ data base.

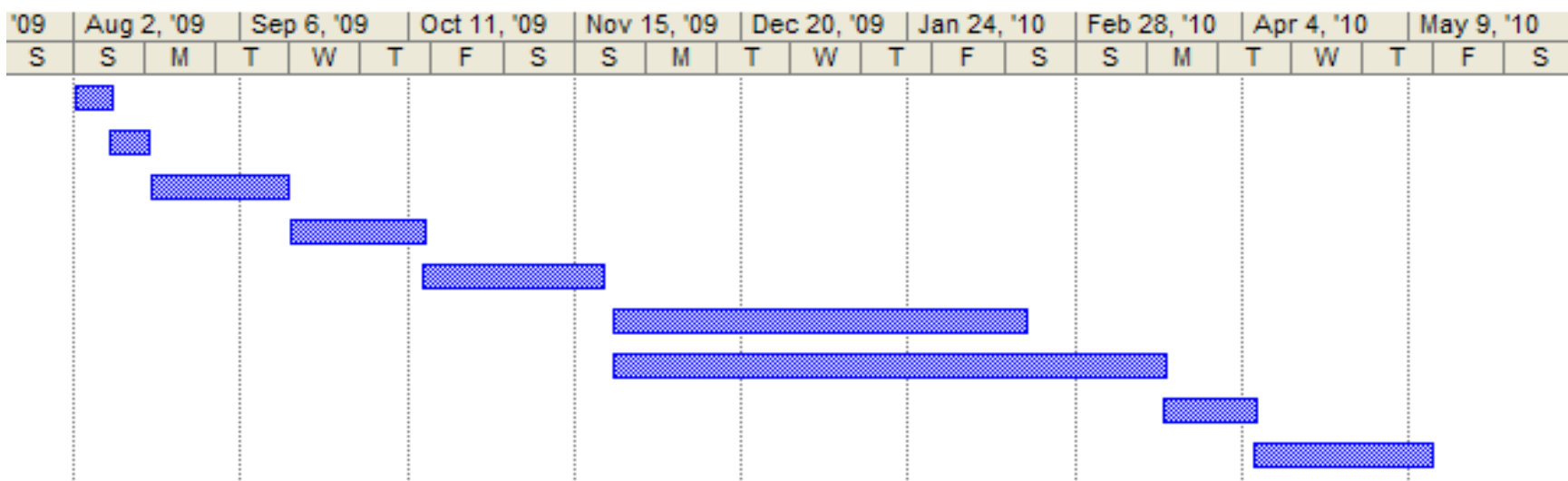
Randomly sample from:

- ❑ 5,099 beneficiaries' (regular payments)
- ❑ 20,000 beneficiaries' (1 time payment)
- ❑ 7000 identified as in eligible based on the criteria sample size will be statistically calculated.

Regression Discontinuity- Post intervention



1		Mobilization	1	7 days	Sun 8/2/09	Sun 8/9/09
2		Samples Selection	1	7 days	Sun 8/9/09	Mon 8/17/09
3		Questinnaire Development	3	21 days	Tue 8/18/09	Tue 9/15/09
4		Training of Field workes	3	21 days	Wed 9/16/09	Wed 10/14/09
5		Piloting & Review	4	28 days	Wed 10/14/09	Fri 11/20/09
6		Data Collection	9	63 days	Mon 11/23/09	Wed 2/17/10
7		Data Entry & Verification	12	84 days	Mon 11/23/09	Thu 3/18/10
8		Analyses	2	14 days	Thu 3/18/10	Tue 4/6/10
9		Reporting	4	28 days	Tue 4/6/10	Thu 5/13/10



8. Sources of Financing

- World Bank.