



*Nicaragua Poverty Assessment:
Increasing Welfare and Reducing Vulnerability*

Florencia T. Castro-Leal

LCSPP – LCCNI

The World Bank

PREM Learning Week

May 6, 2004



Nicaragua Poverty Assessment

★ *One main purpose:*

★ To be responsive to key stakeholders during HIPC (GON, WB, IMF, bilateral donors, civil society) providing key inputs into GON's PRSP, WB/IMF HIPC-CP, WB's PRSC and PRSC-TAC and and PRGF

•



Nicaragua Poverty Assessment

★ *Three broad goals:*

- ★ Update the country's poverty profile in 2001 and assessing changes between 1998 and 2001;
- ★ Review progress on targets related to the country's PRSP and MDGs, and identify policy instruments to achieve them; and,
- ★ Identify public and private strategies to support families moving out of poverty and to prevent them from falling into poverty.



Nicaragua Poverty Assessment

- ★ How did we integrate gender analysis in a country where perceptions indicated gender differences were comparatively small?



Nicaragua Poverty Assessment

- ★ Included a gender specialist and a gender economist in the team;
- ★ Talked to in-country sector specialists;
- ★ Talked to NGOs and to other civil society organizations, particularly women's groups;
- ★ Listened to bilateral donor concerns;
- ★ Asked analysts to look for indications of gender differences; and
- ★ Focused on identifying major policy instruments related to progress in poverty reduction and other MDGs.



Nicaragua Poverty Assessment

- ★ Which gender differences did we identify with major policy implications for progress in poverty reduction and other MDGs?



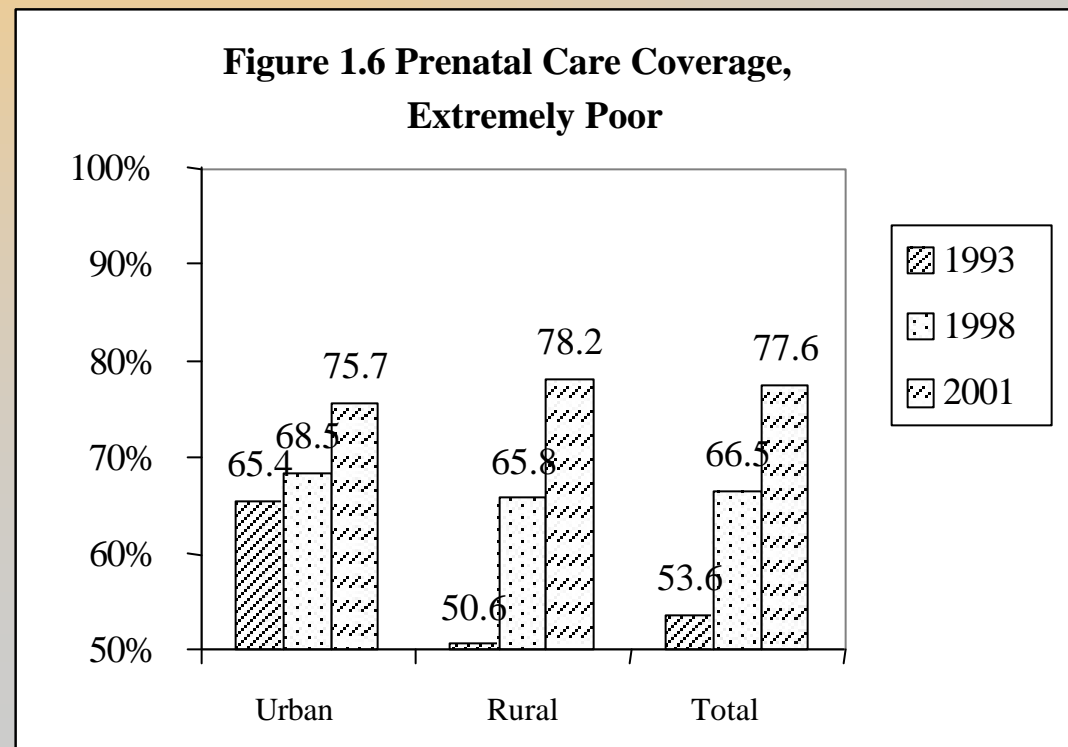
Nicaragua Poverty Assessment

- ★ Highest fertility rates in LAC (twice regional avg)
- ★ Highest adolescent pregnancy in LAC (half of all pregnancies and of all maternal deaths occur in women 15-19);
- ★ Half adolescents w/no education have been pregnant compared to 5% w/higher education;
- ★ High maternal mortality with an urban curative system rather than preventive health;
- ★ Family violence as opposed to street violence;
- ★ Boys labor hinders educational attainment; and,
- ★ Women and children share housework and are family labor for farming.



Nicaragua Poverty Assessment

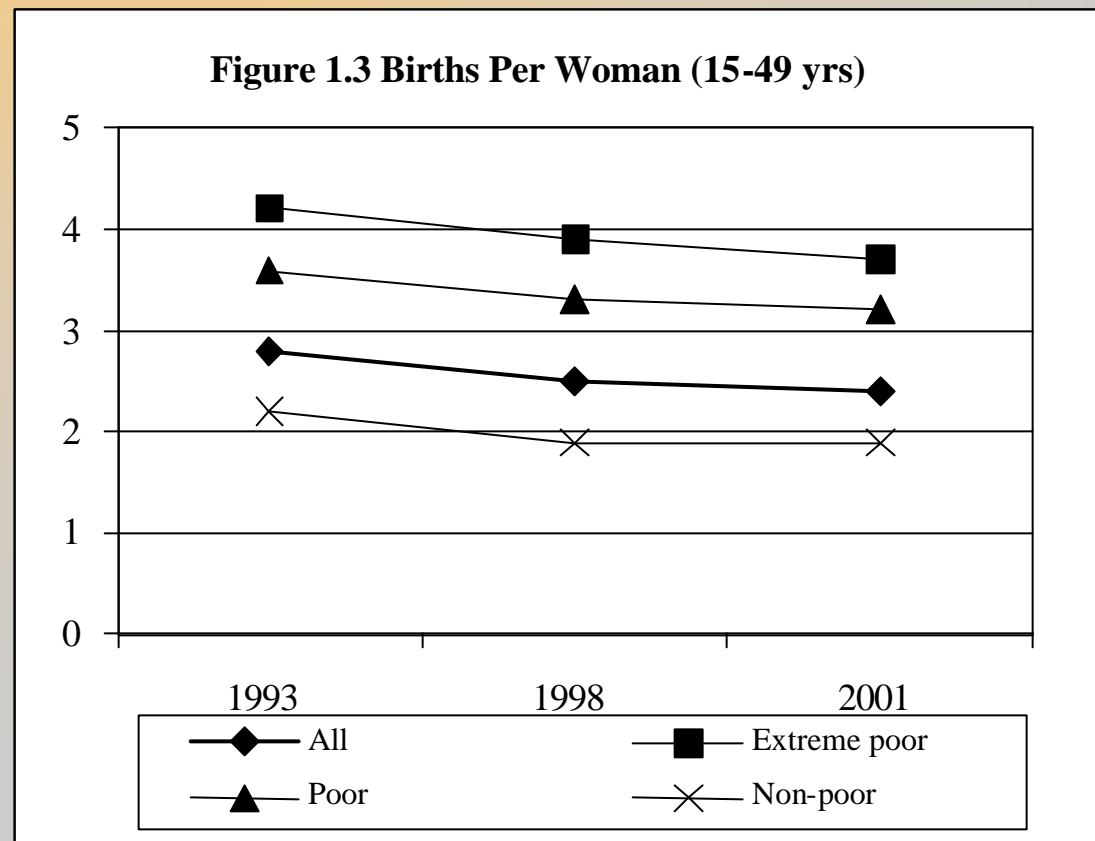
- ★ Prenatal care coverage has improved significantly, but institutional births and births attended by skilled health staff had minimal progress ...





Nicaragua Poverty Assessment

- ★ Although births per woman declined, the speed of the decline slowed down ...

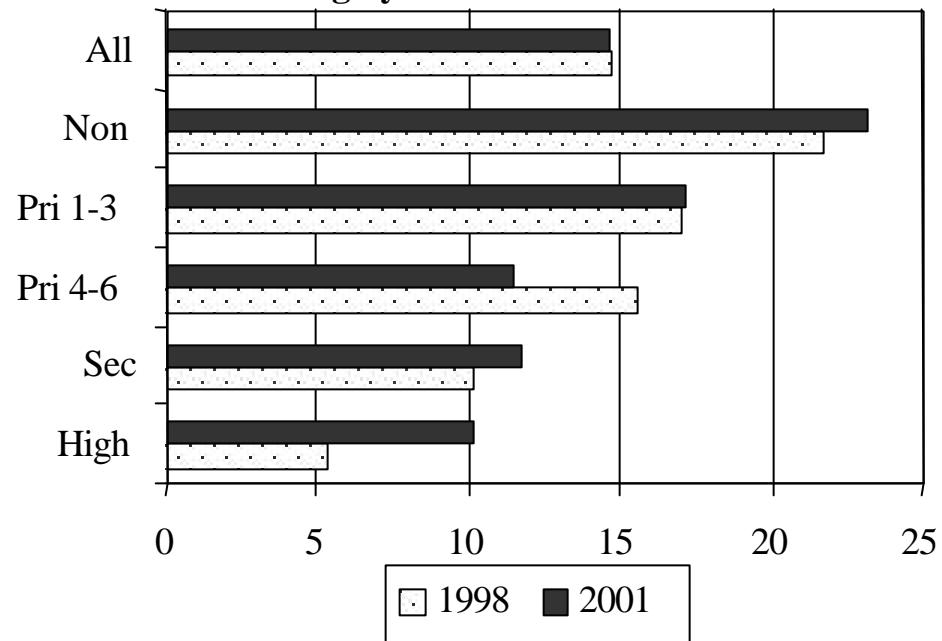




Nicaragua Poverty Assessment

- ★ Unsatisfied demand for family planning showed almost no progress and almost 1:5 women with no education are unable to limit or space childbearing...

Figure 1.4 Unsatisfied Demand for Family Planning by Women's Education





Nicaragua Poverty Assessment

- ★ What do these findings mean for our policy dialogue, for our country strategy and for our portfolio?



Nicaragua Poverty Assessment

- ★ Prioritize Education for all (EFA-EFA) in our portfolio;
- ★ Incorporate gender into productive and basic infrastructure projects to showcase labor opportunities for women;
- ★ Broaden access to micro-financial services for women in rural areas;
- ★ Incorporate population in our policy dialogue;
- ★ Prioritize maternal health in our health project;
- ★ Support fast-responding safety net interventions that can start and stop in response to sudden shocks.