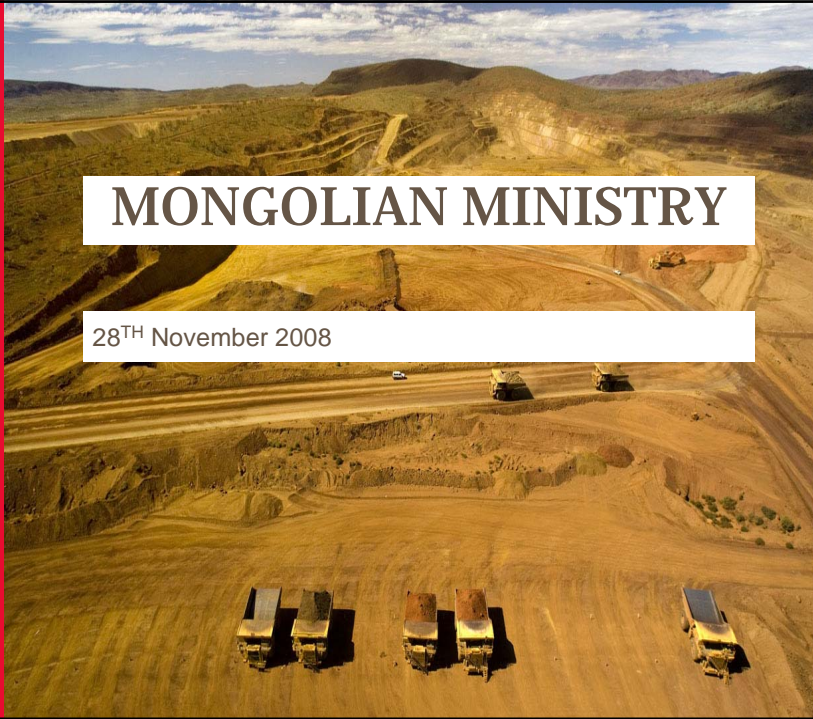


# MONGOLIAN MINISTRY

28<sup>TH</sup> November 2008



## At West Angelas safety comes first...

Our Goal is . . .



Welcome to West Angelas mine.  
Your safety while on this site is important to us.

Please observe the following rules during your visit:

- Follow the advice of your tour guide
- Wear safety glasses at all times while outside and hard hats when advised
- Wear seat belts when provided
- No smoking inside buildings or vehicles

## Muster points for administration and workshop

- M1 - car park area outside admin building (north east)
- M2 - car park area north of maintenance office building
- M3 - Otraco tyre bay
- Plant area – further explained in area orientation
- ROM pad - further explained in area orientation

Make sure you know exactly where your nearest muster points are

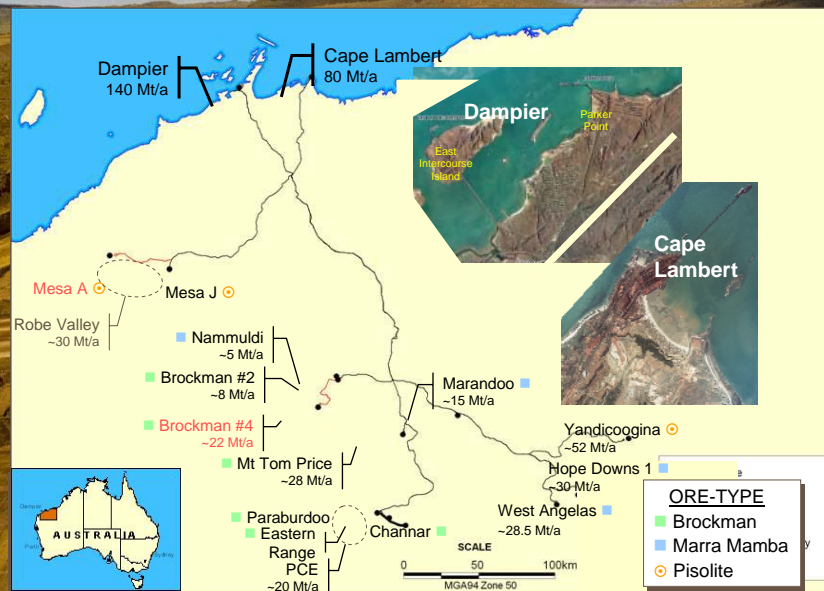


28<sup>th</sup> November 2008

Mongolian Ministry – VIP Visit

3

## Rio Tinto Iron Ore Group - operations in the Pilbara Mines, rail network and ports – after expansions approved to date



28<sup>th</sup> November 2008

Mongolian Ministry – VIP Visit

4

## Ore Reserves

### Ore Reserves

- Marra Mamba Iron Formation
  - 392 Mt
    - ❖ 202 Mt at Deposit A
    - ❖ 135 Mt at Deposit B
    - ❖ 55 Mt at Deposit E

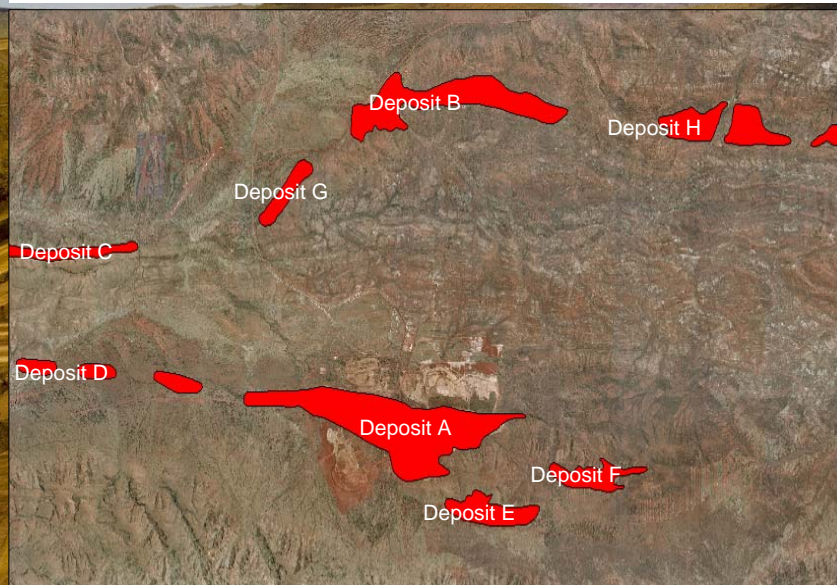
### Mineral Resources

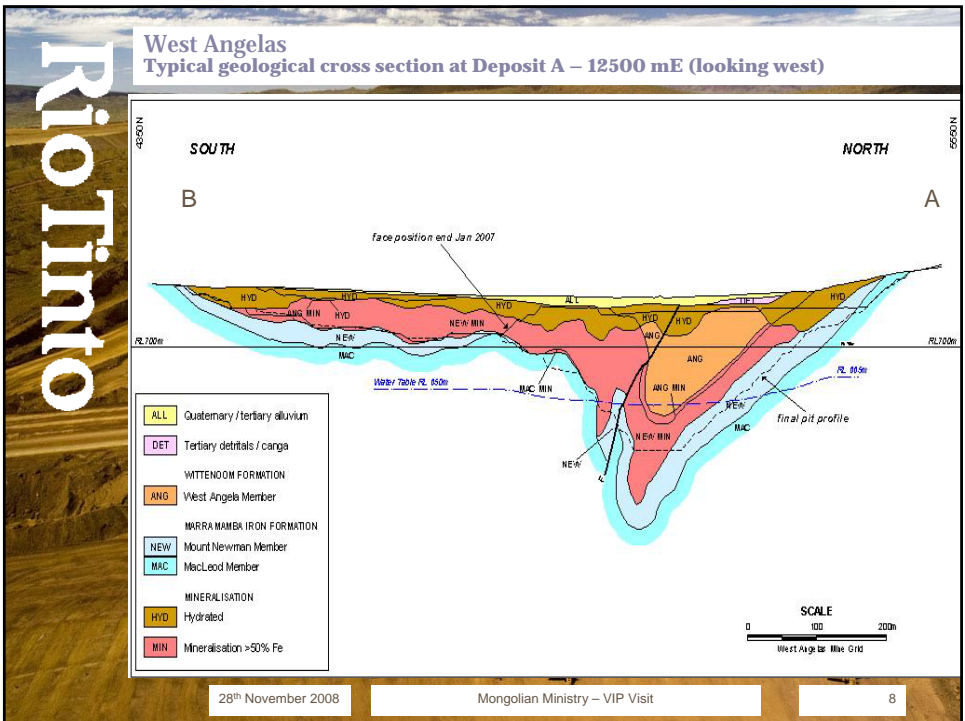
- Marra Mamba Iron Formation
    - 190 Mt at Deposits A, B, E & F
    - 265 Mt at Deposits C, D & G
    - 180 Mt at Angelo River
- as at 31 December 2007

Mineral Resources additional to Ore Reserves



## Deposit locations







## Performance review

Performance in 2007

Total material movement . . . 72.4 Mt  
 Ore production . . . . . 26.0 Mt

Planned performance 2008

Total material movement...89 Mt  
 Ore production.....28.5 Mt

Ore is railed 420km to Dampier for inclusion in Pilbara Blend



28<sup>th</sup> November 2008

Mongolian Ministry – VIP Visit

11

## Village and workforce

Employees

- Fly-in / fly-out operation
- 870 room camp
  - 460 RTIO personnel
  - 390 contractors (max)

Village

- 870-room camp
- Swimming pool, cricket nets
- Tennis courts, gymnasium
- Wet mess / dry mess



28<sup>th</sup> November 2008

Mongolian Ministry – VIP Visit

12

## Infrastructure

- Fuel Usage 43MI ytd (~ \$50MI / annum)
- Electricity consumption: 35 GWhrs ytd (~ \$2M / annum)
- Water Usage 2GI per annum
  - Water is sourced from bore fields 30km away from site
- 8MW Power Station on-site



28<sup>th</sup> November 2008

Mongolian Ministry – VIP Visit

13

## Village Upgrade

- Replacement of 174 non en-suite rooms with 162 en-suite accommodation rooms, including additional laundries and linen storage buildings.
- Kitchen upgrade
- Extended wet mess beer garden, and additional retail area
- Squash court, extended gymnasium and sports oval
- Building relocations, road and car park improvements
- Waste water treatment plant upgrade
- Landscaping, drainage, power system, water and fire water upgrades



28<sup>th</sup> November 2008

Mongolian Ministry – VIP Visit

14

## Technology trials

- Technology testing hub has been created at West Angelas
- Autonomous drills
- Autonomous haul trucks
- East Pilbara Remote Operations Centre
- Remote planning



28<sup>th</sup> November 2008

Mongolian Ministry – VIP Visit

15

# QUESTIONS?

28<sup>th</sup> November 2008

Mongolian Ministry – VIP Visit

16