



PORT WARATAH COAL SERVICES

Visitor Presentation – 2008



PWCS SITES



The header banner for 'PWCS AT A GLANCE' features a blue background with a world map and a grid pattern. On the left, there are three small images: a yellow sun, a red crane, and a red excavator. On the right, the PWCS logo is displayed, which consists of a red and blue stylized 'P' and 'W' with the letters 'PWCS' below it.

PWCS AT A GLANCE

- PWCS owns and operates the two export coal terminals in Newcastle - at Carrington and Kooragang.
- The company is owned by the Hunter Valley coal export industry - coal producers and some of their Japanese customers and is an unlisted public company.
- PWCS is the largest coal export facility in the World, with planned throughput of 95.0 million tonnes of coal in 2008.
- PWCS has a throughput capacity of 102 Mtpa.
Kooragang Terminal 77 Mtpa and Carrington Terminal 25 Mtpa.
- Since 1994, PWCS has invested over \$860 million in the expansion of throughput capacity, increasing from its original capacity at Carrington of 20 Mtpa to 102 Mtpa for the combined terminals.
- For Calendar Year 2007 PWCS loaded 84.8 million tonnes, compared to 79.8 million tonnes in Calendar Year 2006.

The header banner for 'PWCS PEOPLE' features a blue background with a world map and a grid pattern. On the left, there are three small images: a yellow sun, a red crane, and a red excavator. On the right, the PWCS logo is displayed, which consists of a red and blue stylized 'P' and 'W' with the letters 'PWCS' below it.

PWCS PEOPLE

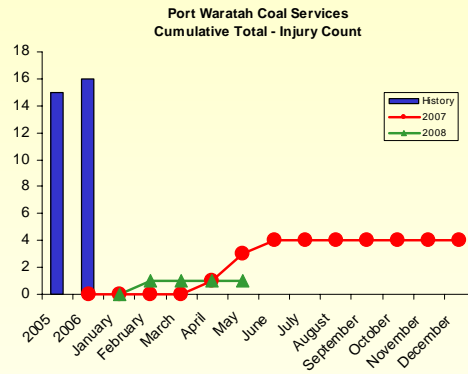
420 people are employed at PWCS supported by the equivalent of approximately 350 full time contractors

Operators and maintainers work a '4-on 4-off' shift roster to provide 24 hour / 7 day coverage to provide continuous operation of both port facilities

People are our most important asset and we are keen to develop active engagement to promote continuous improvement



PWCS is committed to improving safety.



PWCS is implementing the StepSafe Safety Management System, Interactive Safety Observation, Risk Assessment Programmes and increasing employee involvement to create a culture of safety excellence.

Carrington:

2 rail dump stations, 4 stackers, 4 reclaimers, 2 shiploaders

Kooragang:

3 rail dump stations, 5 stackers, 3 reclaimers, 3 shiploaders

PWCS has the capacity to simultaneously load five vessels



The banner features a blue background with a grid pattern. On the left, there are three small images: a yellow sun, a red crane, and a red crane. The text "PWCS AND THE ENVIRONMENT" is written in a bold, white, italicized font. On the right, there is a red and white PWCS logo.

PWCS AND THE ENVIRONMENT


PWCS uses recycled water, automatic dust suppression systems on the stockpiles and monitors water discharge into the Hunter River. PWCS operates under and complies with Government Consent Conditions.


The banner features a blue background with a grid pattern. On the left, there are three small images: a yellow sun, a red crane, and a red crane. The text "PWCS AND THE LOCAL COMMUNITY" is written in a bold, white, italicized font. On the right, there is a red and white PWCS logo.

PWCS AND THE LOCAL COMMUNITY

PWCS actively endorses community groups and projects within the vicinities of the two coal terminals. Two of our major sponsorships are:

- Hunter Medical Research Institute – this local Institute promotes medical research. PWCS sponsors researchers to examine onset of schizophrenia.
- Newcastle Surf Life Saving Club – this local club has a 100-year history in Newcastle. PWCS sponsors the purchase of new equipment.
- Other community involvement includes Scholarships for both High School and University students and Apprenticeships with “hands-on” work.
- \$ for \$ (employees and company) donating to local charities
- PWCS remains committed to good neighbour principles and conducts tour programmes to offer an insight to our operations.

 PWCS OWNERSHIP		
	PWCS' Shareholders %	No. of Directors
Newcastle Coal Shippers	37%	4
Bloomfield Collieries	3%	
Coal & Allied	30%	3 (including Chairman)
Japanese Trading	18%	3
Japanese Steel	7%	
Japanese Power, Cement, Oil	5%	
Total	100%	10

 PWCS CUSTOMERS	
	% of Throughput
Xstrata Coal Australia	32%
Coal & Allied	26%
BHP Billiton	7%
Integra	4%
Anglo Coal	2-4%
Coaltrade Australia	"
Wambo Mining	"
Noble Resources	"
Constellation	"
Ashton Coal Operations	1% or less
Muswellbrook Coal	"
Centennial Coal	"
Newpac	"
EDF Trading	"
Lake Coal	"
Whitehaven	"
Austar	"
Energy Coal Marketing	"
Glencore International	"
Idemitsu Boggabri	"
Nippon Steel	"
Bloomfield Collieries	"

* (2007 Figures)



COAL IN NEW SOUTH WALES

- In NSW there are 55 mines:
 - 28 underground
 - 27 open cut
- There are 33 major development proposals, including 6 under construction, 11 expansions of existing operations and 16 potential new projects
- Total NSW Exports (2007) 96.7 Mt
 - PWCS (Jan – Dec 07) 84.8 Mt
- Domestic consumption 33.3 Mt

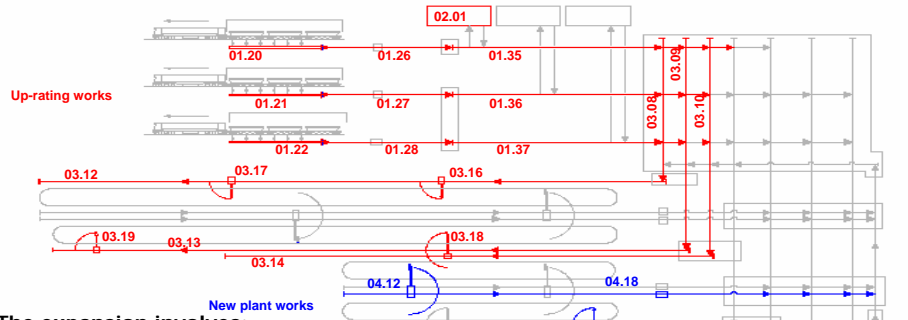
Coalfield	Reserve Mt
Hunter	4,330
Newcastle	1,440
Gunnedah	1,290
Western	1,760
Gloucester	20
Southern	670
Oaklands	1,280
Total	10,790*

* Recoverable reserves include resources where conceptual mine planning has been undertaken.

Source: NSW Dept. Mineral Resources Coal Industry Profile and Coal Services Pty Ltd

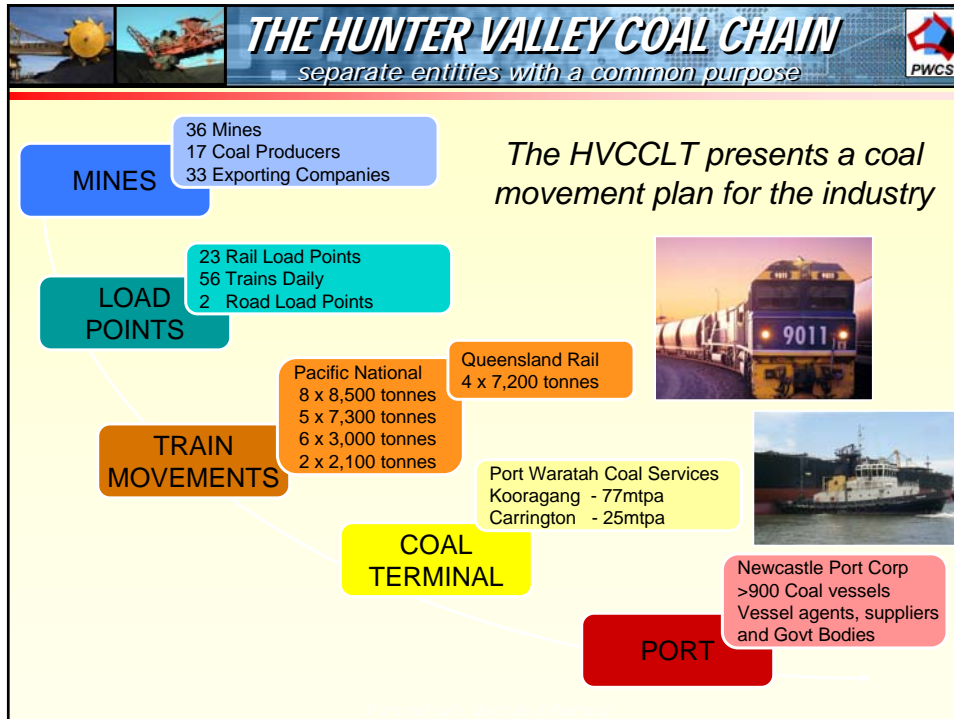


Project 3Exp Phase 1 Expansion Option – 113Mtpa

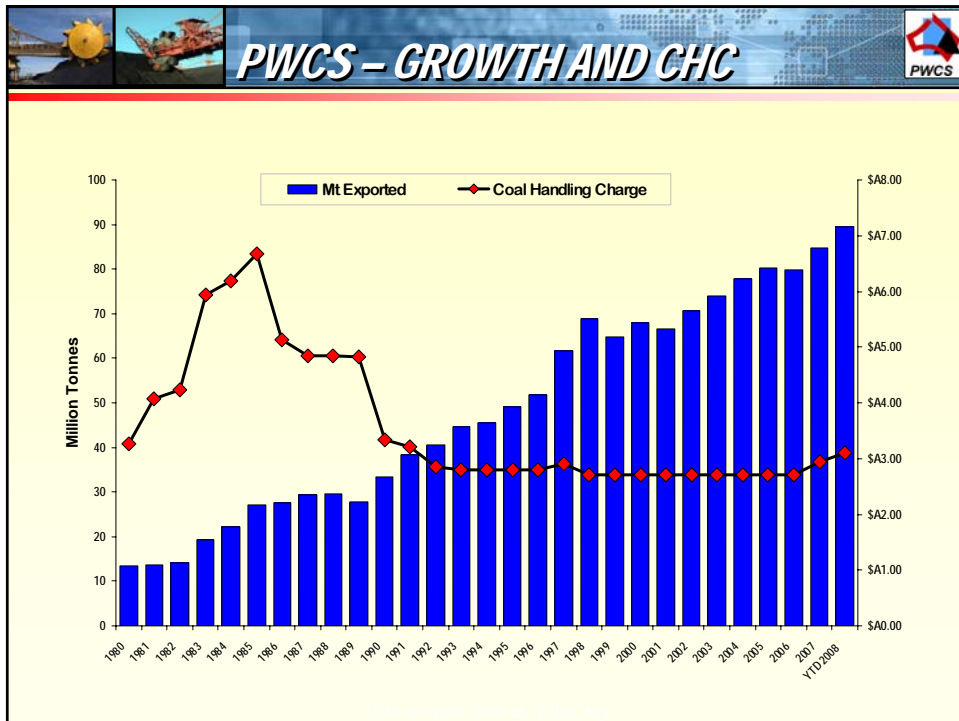


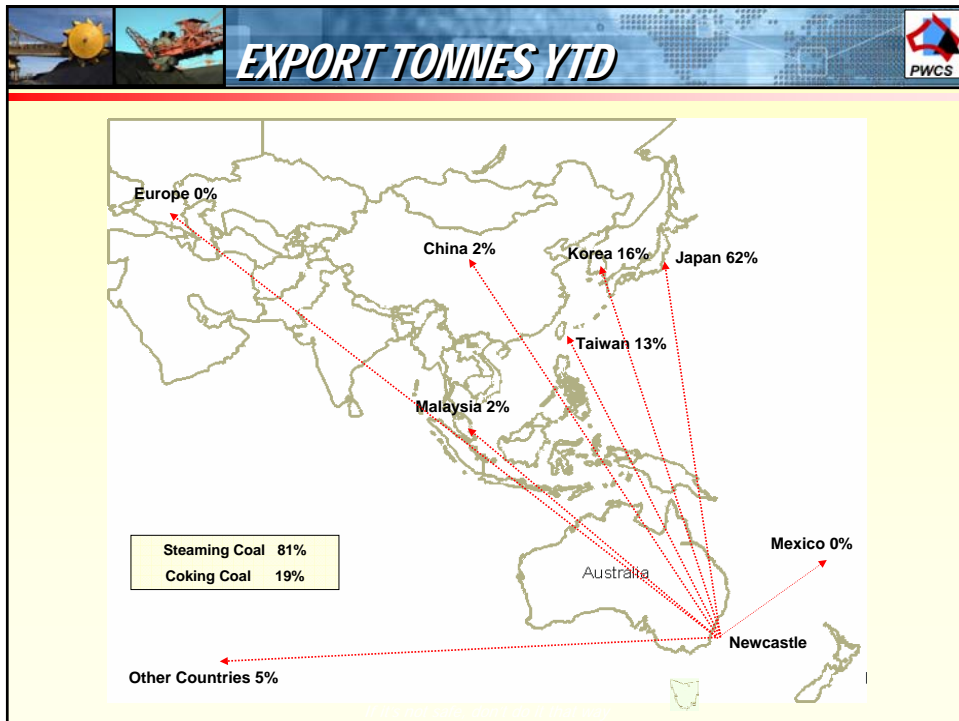
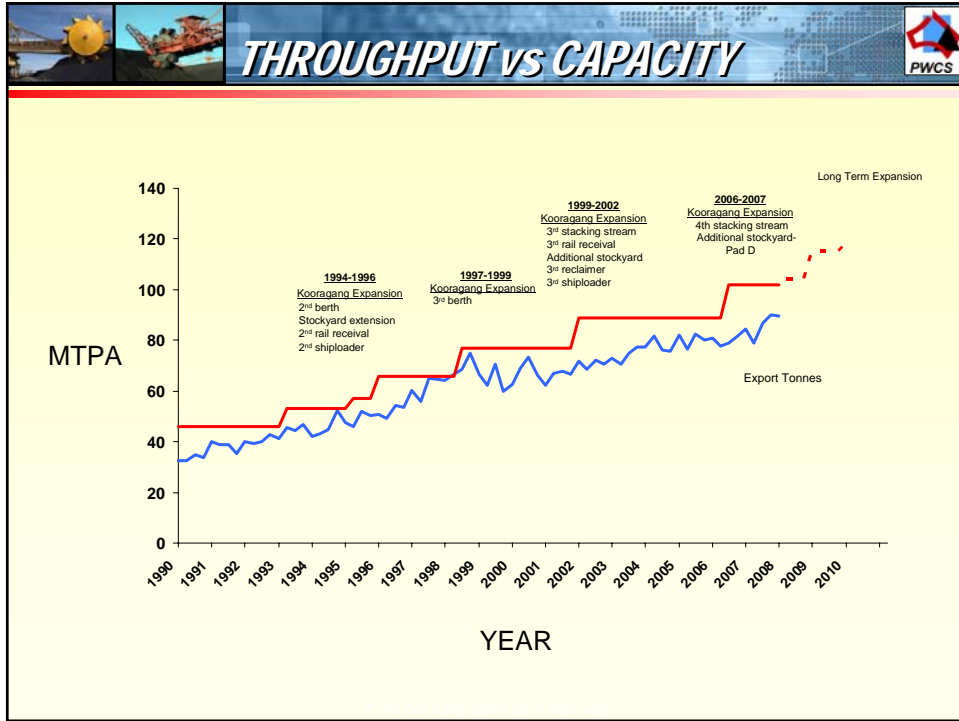
- The expansion involves:
 - Upgrade the in-loading rate from 6,600 tph to 8,500 tph and the stacker travel time from 25 metres per minute to 40 metres per minute on two stacking streams
 - One conveyor stream to remain at 6,600 tph to minimise operational impact
 - New reclaimers on Berm D and new stacker on Berm E
 - Replacement of two original reclaimers and two original stackers





-
- HVCC - THE NEXT FIVE YEARS**
- Infrastructure**
- Capital spending on track infrastructure to increase coal chain capacity including Sandgate Grade Separation
 - Load Point upgrades, Hunter Valley Load Point, Warkworth Load Point, Ulan Load Point and Liddell Load Point. Construction of a new Load Point at Wambo which has increased rail capacity
 - Additional train sets by Pacific National and Queensland Rail to increase rail capacity
 - The port has plans to deepen and widen its shipping channels in the future to allow access to larger vessels
 - Hunter Valley Coal Chain Logistics Team's work to increase the performance of all coal chain interfaces

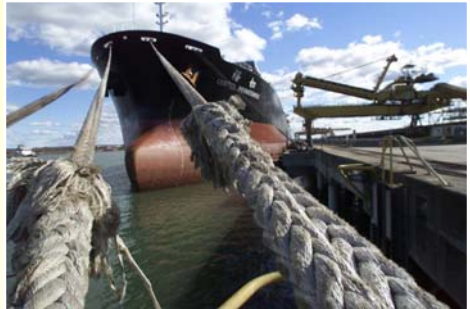






PWCS VESSEL STATISTICS

- The total number of vessels loaded in Calendar Year 2007 was 973 compared to 918 in Calendar Year 2006.
- The average shipment size is 87,179 tonnes (PANAMAX).




PWCS VESSEL STATISTICS

SHIPMENT SIZE – 2008

