

**Main output tables of
the "Household Socio-Economic Survey 2007-2008"**

Ulaanbaatar
2009

List of Tables

- 1 National poverty rates
- 2 Poverty by region
- 3 Poverty by analytical domain
- 4 Poverty estimates, 2002/03, 2007/08
- 5 Inequality and average consumption, 2002/03, 2007/08
- 6 Decomposition of poverty changes into growth and inequality components, 2002/03, 2007/08
- 7 Consumption per capita per month by main consumption categories
- 8 Consumption per capita per month by poverty status
- 9 Per capita monthly consumption by poverty status and analytical domain
- 10 Per capita monthly consumption by poverty status and region
- 11 Per capita monthly consumption by decile
- 12 Share of total consumption by decile
- 13 Poverty by quarter
- 14 Poverty by household size
- 15 Poverty by age of the household head
- 16 Poverty by gender of the household head
- 17 Poverty by highest level of education completed of the household head
- 18 Poverty by labor force participation of the household head
- 19 Poverty by sector of employment of the household head
- 20 Poverty by migrant status of the household head
- 21 Livestock holdings
- 22 Poverty by ownership of livestock
- 23 Poverty by ownership of land
- 24 Poverty by possession of savings
- 25 Poverty by type of dwelling
- 26 Poverty by access to infrastructure services
- 27 Poverty by access to infrastructure services in urban and rural areas
- 28 Transfers and remittances received by the household
- 29 Poverty by receipt of private and public transfers
- 30 Poverty by receipt of retirement pensions
- 31 Poverty by urban and rural areas
- 32 Poverty by analytical domain
- 33 Poverty by region
- 34 Poverty by quarter
- 35 Poverty by age of the household head
- 36 Poverty by gender of the household head
- 37 Poverty by highest educational attainment of the household head
- 38 Poverty by migrant status of the household head
- 39 Poverty by ownership of livestock
- 40 Poverty by possession of savings
- 41 Poverty by type of dwelling
- 42 Poverty by access to improved water sources
- 43 Poverty by access to improved sanitation
- 44 Poverty by access to electricity
- 45 Poverty by access to improved water sources, improved sanitation and electricity

Table 1. National poverty rates

	Headcount	Poverty gap	Severity
	35.2 (0.8)	10.1 (0.3)	4.0 (0.2)

Note: Standard errors taking into account the survey design are shown in parentheses.

Source: HSES 2007/08.

Table 2. Poverty by region

	National	West	Highlands	Central	East	Ulaanbaatar
Headcount	35.2 (0.8)	47.1 (2.0)	46.6 (1.8)	30.7 (1.7)	46.7 (2.8)	21.9 (1.4)
Poverty gap	10.1 (0.3)	12.8 (0.7)	13.6 (0.7)	8.4 (0.6)	14.9 (1.3)	6.3 (0.5)
Severity	4.0 (0.2)	4.7 (0.3)	5.3 (0.3)	3.3 (0.3)	6.6 (0.7)	2.6 (0.2)
<i>Memorandum items:</i>						
Population share (%)	100.0	15.4	20.7	16.3	7.4	38.4
Population ('000)	2 635.2	411.1	555.7	437.9	199.3	1 031.2
Share among the poor (%)	100.0	22.1	30.5	14.7	10.5	22.2
Poor ('000)	928.6	193.6	258.9	134.6	93.1	226.1
Household size	3.9	4.1	3.9	3.7	3.8	3.9
Dependency ratio (%)	38.9	43.3	39.7	37.8	41.0	36.4
Children (% household size)	26.4	30.8	27.7	25.1	27.8	24.0
Age of household head	44.9	44.1	44.3	44.5	44.4	45.9
Male household head (%)	78.0	84.8	82.5	78.4	78.7	71.7
Urbanization (%)	57.6	30.0	34.8	36.3	36.1	100.0

Note: Population for 2007/08 is based on administrative data and refers to the estimated population at the end of 2007.

Standard errors taking into account the survey design are shown in parentheses.

Source: HSES 2007/08.

Table 3. Poverty by analytical domain

	National	Urban			Rural		
		Total	Ulaanbaatar	Aimag centers	Total	Soum centers	Country-side
Headcount	35.2 (0.8)	26.9 (1.1)	21.9 (1.4)	34.9 (1.8)	46.6 (1.2)	42.0 (1.8)	49.7 (1.6)
Poverty gap	10.1 (0.3)	7.7 (0.4)	6.3 (0.5)	9.9 (0.7)	13.4 (0.5)	12.7 (0.7)	13.9 (0.6)
Severity	4.0 (0.2)	3.1 (0.2)	2.6 (0.2)	3.9 (0.3)	5.2 (0.2)	5.2 (0.3)	5.3 (0.3)
<i>Memorandum items:</i>							
Population share (%)	100.0	60.8	39.2	21.6	39.2	13.4	25.8
Population ('000)	2 635.2	1 601.0	1 031.2	569.8	1 034.2	354.3	679.9
Share among the poor (%)	100.0	43.9	22.2	21.8	56.1	20.7	35.4
Poor ('000)	928.6	430.3	226.1	198.9	481.7	148.8	338.2
Household size	3.9	3.9	3.9	3.9	3.9	3.9	3.8
Dependency ratio (%)	38.9	37.5	36.4	39.2	40.8	39.5	41.7
Children (% household size)	26.4	25.0	24.0	26.8	28.2	27.8	28.5
Age of household head	44.9	45.7	45.9	45.4	43.8	44.7	43.1
Male household head (%)	78.0	73.7	71.7	77.0	83.8	79.5	86.8

Note: Population for 2007/08 is based on administrative data and refers to the estimated population at the end of 2007.

Standard errors taking into account the survey design are shown in parentheses.

Source: HSES 2007/08.

Table 4. Poverty estimates, 2002/03, 2007/08

	2002/03			2007/08			
	Poverty		Population (%)	Poverty		Population (%)	
	Headcount	Gap		Headcount	Gap		Severity
National	36.1	11.0	100.0	35.2	10.1	4.0	100.0
Urban	30.3	9.2	55.4	26.9	7.7	3.1	60.8
Rural	43.4	13.2	44.6	46.6	13.4	5.2	39.2
Ulaanbaatar	27.3	8.1	30.2	21.9	6.3	2.6	38.4
Aimag centers	33.9	10.5	25.2	34.9	9.9	3.9	21.6
Soum centers	44.5	14.4	16.2	42.0	12.7	5.2	13.4
Countryside	42.7	12.6	28.4	49.7	13.9	5.3	25.8
West	51.1	14.6	17.0	47.1	12.8	4.7	15.4
Highlands	38.7	12.3	24.1	46.6	13.6	5.3	20.7
Central a/	34.4	10.1	19.5	30.7	8.4	3.3	16.3
East	34.5	12.4	9.3	46.7	14.9	6.6	7.4

a/ Excludes Ulaanbaatar.

Source: HIES/LSMS 2002/03 and HSES 2007/08.

Table 5. Inequality and average consumption, 2002/03, 2007/08

	Theil or GE(1)		Gini		GE(2)		Per capita consumption (2007/08 Tugrug per month)		Change
	2002/03	2007/08	2002/03	2007/08	2002/03	2007/08	2002/03	2007/08	
National	0.18	0.23	0.33	0.36	0.23	0.35	92 814	100 865	8.7
Urban	0.18	0.23	0.33	0.36	0.23	0.33	101 909	115 501	13.3
Rural	0.17	0.19	0.31	0.32	0.21	0.30	81 504	81 010	-0.6
Ulaanbaatar	0.19	0.23	0.33	0.36	0.24	0.34	108 612	126 494	16.5
Aimag centers	0.17	0.20	0.32	0.34	0.21	0.28	93 894	97 680	4.0
Soum centers	0.17	0.22	0.32	0.35	0.21	0.30	80 523	89 197	10.8
Countryside	0.16	0.16	0.31	0.30	0.21	0.29	82 064	75 344	-8.2
West	0.17	0.16	0.31	0.30	0.22	0.22	75 077	78 683	4.8
Highlands	0.17	0.19	0.32	0.32	0.21	0.26	86 851	80 412	-7.4
Central a/	0.16	0.22	0.31	0.35	0.19	0.36	92 901	105 505	13.6
East	0.17	0.20	0.32	0.34	0.21	0.25	89 118	81 812	-8.2

a/ Excludes Ulaanbaatar.

Note: Monetary figures from 2002/03 were updated to 2007/08 prices with the ratio between the poverty lines in both periods.

GE(a) indices refer to the Generalized Entropy class of inequality measures; the higher (lower) the value of a, the greater the sensitivity of the measure to consumption differences at the top (bottom) of the distribution. The Gini index is more sensitive to consumption differences in the middle of the distribution.

Source: HIES/LSMS 2002/03 and HSES 2007/08.

Table 6. Decomposition of poverty changes into growth and inequality components, 2002/03, 2007/08

	Headcount	Poverty gap	Severity
National			
Change in poverty	-0.9	-0.9	-0.7
Growth component	-5.0	-2.1	-1.0
Inequality component	4.2	1.2	0.4
Urban			
Change in poverty	-3.4	-1.5	-0.9
Growth component	-6.7	-2.5	-1.2
Inequality component	3.3	1.0	0.4
Rural			
Change in poverty	3.2	0.2	-0.3
Growth component	0.3	0.2	0.1
Inequality component	2.9	0.0	-0.4
Ulaanbaatar			
Change in poverty	-5.3	-1.8	-0.7
Growth component	-7.3	-2.7	-1.3
Inequality component	2.0	0.9	0.6
Aimag centers			
Change in poverty	1.0	-0.6	-0.8
Growth component	-2.6	-1.0	-0.5
Inequality component	3.7	0.3	-0.4
Soum centers			
Change in poverty	-2.5	-1.7	-1.2
Growth component	-6.7	-3.0	-1.6
Inequality component	4.2	1.3	0.4
Countryside			
Change in poverty	7.0	1.3	0.2
Growth component	6.2	2.8	1.4
Inequality component	0.8	-1.5	-1.2
West			
Change in poverty	-4.0	-1.8	-1.1
Growth component	-3.5	-1.7	-0.8
Inequality component	-0.5	-0.1	-0.3
Highlands			
Change in poverty	7.9	1.4	0.2
Growth component	4.8	2.3	1.2
Inequality component	3.1	-0.9	-1.0
Central a/			
Change in poverty	-3.7	-1.8	-1.0
Growth component	-7.9	-2.9	-1.4
Inequality component	4.2	1.2	0.4
East			
Change in poverty	12.2	2.6	0.0
Growth component	4.7	2.3	1.2
Inequality component	7.4	0.3	-1.2

a/ Excludes Ulaanbaatar.

Source: HIES/LSMS 2002/03 and HSES 2007/08.

Table 8. Consumption per capita per month by poverty status

	Total		Urban		Rural	
	Non-poor	Poor	Non-poor	Poor	Non-poor	Poor
Consumption, togrog						
Food	43 340	23 188	43 394	21 648	43 240	24 393
Alcohol and tobacco	1 965	819	1 497	541	2 834	1 036
Education	9 850	2 608	10 539	2 553	8 569	2 652
Health	6 675	1 001	6 426	1 121	7 138	907
Durable goods 1/	1 176	328	1 307	265	932	377
Rent 2/	7 965	1 177	11 418	1 651	1 554	806
Heating 3/	3 892	1 629	5 029	2 904	1 781	630
Utilities 4/	3 452	889	4 678	1 525	1 176	392
Clothing	22 650	7 053	22 379	5 998	23 152	7 878
Transportation and communication	19 166	2 665	22 290	3 190	13 367	2 255
Others 5/	11 352	3 233	12 581	3 271	9 070	3 202
Total	131 483	44 589	141 539	44 667	112 813	44 528
Shares, percent						
Food	33	52	31	48	38	55
Alcohol and tobacco	1	2	1	1	3	2
Education	7	6	7	6	8	6
Health	5	2	5	3	6	2
Durable goods 1/	1	1	1	1	1	1
Rent 2/	6	3	8	4	1	2
Heating 3/	3	4	4	7	2	1
Utilities 4/	3	2	3	3	1	1
Clothing	17	16	16	13	21	18
Transportation and communication	15	6	16	7	12	5
Others 5/	9	7	9	7	8	7
Total	100	100	100	100	100	100

1/ Estimation of the monetary value of the consumption derived from the use of durable goods.

2/ Estimation of the monetary value of the consumption derived from occupying the dwelling. If the household rents its dwelling, the actual rent will be included instead of the imputed rent.

3/ Includes central and local heating, firewood, coal and dung.

4/ Includes water, electricity and lighting. It excludes telephone.

5/ Includes recreation, entertainment, beauty and toilet articles, and household utensils.

Source: HSES 2007/08.

Table 7. Consumption per capita per month by main consumption categories

	National			Analytical domains			Geographical regions			
	Urban	Rural	Total	Ulaanbaatar	Aimag centers	Soum centers	Countrywide	West Highlands	Central	East
				a/						
Consumption, togrog										
Food	36 239	37 549	34 462	40 274	33 131	33 355	35 228	32 497	37 966	33 020
Alcohol and tobacco	1 561	1 241	1 997	1 131	1 418	2 307	1 782	1 493	2 601	1 708
Education	7 298	8 393	5 813	8 302	8 540	7 373	4 733	7 284	7 389	4 660
Health	4 676	5 000	4 236	5 023	4 963	5 610	3 285	4 413	5 823	3 992
Durable goods 1/	877	1 027	673	1 166	801	760	613	638	831	629
Rent 2/	5 573	8 793	1 206	11 322	4 692	1 555	965	1 513	3 231	1 966
Heating 3/	3 094	4 458	1 245	4 475	4 430	2 172	603	2 514	2 571	1 885
Utilities 4/	2 549	3 831	811	4 475	2 787	1 486	344	710	2 380	1 959
Clothing	17 154	17 976	16 039	18 258	17 519	17 190	15 242	15 714	18 908	16 415
Transportation and communication	13 352	17 157	8 191	20 935	11 031	10 120	6 856	6 806	14 301	7 773
Others 5/	8 491	10 079	6 337	11 133	8 369	7 268	5 693	5 100	9 505	7 804
Total	100 865	115 501	81 010	126 494	97 680	89 197	75 344	78 683	105 505	81 812
Shares, percent										
Food	36	33	43	32	34	37	47	41	36	40
Alcohol and tobacco	2	1	2	1	1	3	2	2	2	2
Education	7	7	7	7	9	8	6	9	7	6
Health	5	4	5	4	5	6	4	6	6	5
Durable goods 1/	1	1	1	1	1	1	1	1	1	1
Rent 2/	6	8	1	9	5	2	1	2	3	2
Heating 3/	3	4	2	4	5	2	1	3	2	2
Utilities 4/	3	3	1	4	3	2	0	1	2	2
Clothing	17	16	20	14	18	19	20	20	18	20
Transportation and communication	13	15	10	17	11	11	9	9	14	10
Others 5/	8	9	8	9	9	8	8	6	9	10
Total	100	100	100	100	100	100	100	100	100	100

a/ Excludes Ulaanbaatar.

1/ Estimation of the monetary value of the consumption derived from the use of durable goods.

2/ Estimation of the monetary value of the consumption derived from occupying the dwelling. If the household rents its dwelling, the actual rent will be included instead of the imputed rent.

3/ Includes central and local heating, firewood, coal and dung.

4/ Includes water, electricity and lighting. It excludes telephone.

5/ Includes recreation, entertainment, beauty and toilet articles, and household utensils.

Source: HSES 2007/08.

Table 9. Per capita monthly consumption by poverty status and analytical domain

	Total		Ulaanbaatar		Aimag centers		Soum centers		Countryside	
	Non-poor	Poor	Non-poor	Poor	Non-poor	Poor	Non-poor	Poor	Non-poor	Poor
Consumption, togrog										
Food	43 340	23 188	45 631	21 201	39 044	22 102	40 777	23 107	45 207	25 145
Alcohol and tobacco	1 965	819	1 342	381	1 800	705	3 165	1 123	2 570	985
Education	9 850	2 608	9 963	2 388	11 660	2 721	10 651	2 848	6 906	2 537
Health	6 675	1 001	6 103	1 178	7 054	1 062	8 892	1 079	5 737	807
Durable goods 1/	1 176	328	1 432	223	1 065	308	1 047	365	841	383
Rent 2/	7 965	1 177	13 944	1 987	6 507	1 309	2 024	906	1 179	748
Heating 3/	3 892	1 629	4 798	3 324	5 477	2 478	2 946	1 102	850	354
Utilities 4/	3 452	889	5 251	1 709	3 564	1 337	2 005	768	513	172
Clothing	22 650	7 053	21 932	5 179	23 248	6 833	24 433	7 190	22 130	8 281
Transportation and communication	19 166	2 665	25 718	3 909	15 626	2 459	16 059	1 918	11 216	2 451
Others 5/	11 352	3 233	13 393	3 090	11 003	3 456	10 198	3 222	8 170	3 191
Total	131 483	44 589	149 506	44 567	126 047	44 769	122 199	43 629	105 318	45 054
Shares, percent										
Food	33	52	31	48	31	49	33	53	43	56
Alcohol and tobacco	1	2	1	1	1	2	3	3	2	2
Education	7	6	7	5	9	6	9	7	7	6
Health	5	2	4	3	6	2	7	2	5	2
Durable goods 1/	1	1	1	0	1	1	1	1	1	1
Rent 2/	6	3	9	4	5	3	2	2	1	2
Heating 3/	3	4	3	7	4	6	2	3	1	1
Utilities 4/	3	2	4	4	3	3	2	2	0	0
Clothing	17	16	15	12	18	15	20	16	21	18
Transportation and communication	15	6	17	9	12	5	13	4	11	5
Others 5/	9	7	9	7	9	8	8	7	8	7
Total	100	100	100	100	100	100	100	100	100	100

1/ Estimation of the monetary value of the consumption derived from the use of durable goods.

2/ Estimation of the monetary value of the consumption derived from occupying the dwelling. If the household rents its dwelling, the actual rent will be included instead of the imputed rent.

3/ Includes central and local heating, firewood, coal and dung.

4/ Includes water, electricity and lighting. It excludes telephone.

5/ Includes recreation, entertainment, beauty and toilet articles, and household utensils.

Source: HSES 2007/08.

Table 10. Per capita monthly consumption by poverty status and region

	Total		West		Highlands		Central		East		Ulaanbaatar	
	Non-poor	Poor	Non-poor	Poor	Non-poor	Poor	Non-poor	Poor	Non-poor	Poor	Non-poor	Poor
	Consumption, togrog											
Food	43 340	23 188	39 387	24 760	40 185	23 789	44 560	23 111	42 309	22 422	45 631	21 201
Alcohol and tobacco	1 965	819	1 867	1 072	2 053	795	3 292	1 044	2 360	965	1 342	381
Education	9 850	2 608	11 366	2 700	9 976	2 727	9 400	2 858	6 828	2 187	9 963	2 388
Health	6 675	1 001	7 451	1 000	6 227	864	7 947	1 039	6 637	974	6 103	1 178
Durable goods 1/	1 176	328	870	379	994	407	1 056	324	992	215	1 432	223
Rent 2/	7 965	1 177	2 043	918	3 955	971	4 236	967	2 893	908	13 944	1 987
Heating 3/	3 892	1 629	3 553	1 348	3 286	908	3 095	1 390	2 595	1 074	4 798	3 324
Utilities 4/	3 452	889	1 013	370	1 757	614	2 998	986	2 871	920	5 251	1 709
Clothing	22 650	7 053	22 748	7 814	22 213	7 717	24 164	7 067	24 271	7 453	21 932	5 179
Transportation and communication	19 166	2 665	10 710	2 422	12 277	2 186	19 327	2 979	13 262	1 511	25 718	3 909
Others 5/	11 352	3 233	7 211	2 730	9 060	3 232	12 063	3 742	11 243	3 881	13 393	3 090
Total	131 483	44 589	108 219	45 513	111 982	44 210	132 137	45 508	116 259	42 510	149 506	44 567
Shares, percent												
Food	33	52	36	54	36	54	34	51	36	53	31	48
Alcohol and tobacco	1	2	2	2	2	2	2	2	2	2	1	1
Education	7	6	11	6	9	6	7	6	6	5	7	5
Health	5	2	7	2	6	2	6	2	6	2	4	3
Durable goods 1/	1	1	1	1	1	1	1	1	1	1	1	0
Rent 2/	6	3	2	2	4	2	3	2	2	2	9	4
Heating 3/	3	4	3	3	3	2	2	3	2	3	3	7
Utilities 4/	3	2	1	1	2	1	2	2	2	2	4	4
Clothing	17	16	21	17	20	17	18	16	21	18	15	12
Transportation and communication	15	6	10	5	11	5	15	7	11	4	17	9
Others 5/	9	7	7	6	8	7	9	8	10	9	9	7
Total	100	100	100	100	100	100	100	100	100	100	100	100

1/ Estimation of the monetary value of the consumption derived from the use of durable goods.

2/ Estimation of the monetary value of the consumption derived from occupying the dwelling. If the household rents its dwelling, the actual rent will be included instead of the imputed rent.

3/ Includes central and local heating, firewood, coal and dung.

4/ Includes recreation, entertainment, beauty and toilet articles, and household utensils.

Source: HSES 2007/08.

4/ Includes water, electricity and lighting. It excludes telephone.

Table 11. Per capita monthly consumption by decile

	National	Urban	Rural	Analytical domains				Regions			
				Ulaanbaatar	Aimag centers	Soum centers	Countryside	West	Highlands	Central	East
Poorest	30 497	32 191	29 127	33 728	30 686	28 395	29 658	31 496	29 217	31 827	24 958
II	42 854	47 787	39 070	52 242	43 196	39 028	39 106	40 375	38 483	46 449	36 540
III	52 436	60 180	46 415	66 302	53 093	47 341	45 977	47 105	45 909	57 102	44 536
IV	62 272	72 445	53 427	80 266	62 614	56 205	52 189	53 253	53 155	67 317	53 040
V	73 323	85 357	61 280	93 737	73 675	65 839	58 899	60 871	61 180	79 768	60 828
VI	85 847	99 571	70 471	110 101	85 102	77 180	66 599	70 019	70 364	92 894	70 893
VII	101 126	118 013	81 981	129 500	99 618	89 893	77 081	80 221	80 978	107 513	84 759
VIII	122 475	142 174	96 921	156 229	119 869	107 401	90 195	93 306	95 294	128 395	102 777
IX	157 957	181 093	120 558	197 876	151 762	136 626	110 732	115 154	120 939	160 431	127 172
Richest	280 033	316 457	211 048	345 151	257 942	244 471	183 170	195 595	209 057	284 035	214 092
Total	100 865	115 501	81 010	126 494	97 680	89 197	75 344	78 683	80 412	105 505	81 812

a/ Excludes Ulaanbaatar.

Note: Deciles were constructed separately for each domain. They comprise 10% of the population of the respective region.

Source: HSES 2007/08.

Table 12. Share of total consumption by decile (2007/08 real Tugrug)

	National	Urban	Rural	Analytical domains				Regions							
				Ulaanbaatar		Aimag centers		Soum centers		Countryside		West	Highlands	Central	East
															a/
Poorest	3.0	2.8	3.6	2.7	3.2	3.2	3.2	3.2	3.9	4.1	3.6	3.0	3.1		
II	4.2	4.1	4.8	4.1	4.4	4.4	4.4	4.4	5.2	5.1	4.8	4.4	4.5		
III	5.2	5.2	5.7	5.3	5.4	5.4	5.3	5.3	6.1	6.0	5.7	5.4	5.5		
IV	6.2	6.3	6.6	6.3	6.4	6.4	6.3	6.3	6.9	6.8	6.7	6.4	6.3		
V	7.3	7.4	7.6	7.4	7.5	7.5	7.4	7.4	7.8	7.7	7.6	7.6	7.4		
VI	8.5	8.6	8.7	8.7	8.8	8.8	8.7	8.7	8.8	8.9	8.8	8.8	8.7		
VII	10.0	10.2	10.1	10.2	10.1	10.1	10.1	10.1	10.2	10.2	10.0	10.2	10.3		
VIII	12.1	12.3	12.0	12.4	12.2	12.2	12.1	12.1	12.0	11.8	11.9	12.1	12.5		
IX	15.7	15.7	14.9	15.6	15.6	15.6	15.3	14.7	14.7	14.6	15.0	15.2	15.7		
Richest	27.7	27.4	26.0	27.3	26.3	26.3	27.4	24.3	24.3	24.8	25.9	26.9	25.9		
Total	100.0	100.0	100.0	100.0	100.0	100.0	100.0	100.0	100.0	100.0	100.0	100.0	100.0		

a/ Excludes Ulaanbaatar.

Note: Deciles were constructed separately for each domain. They comprise 10% of the population of the respective region.

Source: HSES 2007/08.

Table 13. Poverty by quarter

	National	Quarter I (Jul-Sep 2007)	Quarter II (Oct-Dec 2007)	Quarter III (Jan-Mar 2007)	Quarter IV (Apr-Jun 2007)
Headcount	35.2 (0.8)	25.1 (1.5)	33.3 (1.6)	40.5 (1.8)	42.1 (1.8)
Poverty gap	10.1 (0.3)	6.9 (0.5)	9.3 (0.6)	11.5 (0.6)	12.7 (0.7)
Severity	4.0 (0.2)	2.8 (0.3)	3.6 (0.3)	4.5 (0.3)	5.1 (0.3)
<i>Memorandum items:</i>					
Population share (%)	100.0	25.1	24.8	25.0	25.1
Share among the poor (%)	100.0	17.9	23.5	28.7	29.9
Household size	3.9	3.9	3.9	3.9	3.9
Dependency ratio (%)	38.9	39.1	39.5	38.6	38.3
Children (% household size)	26.4	26.9	27.0	26.3	25.4
Age of household head	44.9	44.5	44.7	44.9	45.4
Male household head (%)	78.0	79.2	77.5	78.5	76.9
Urbanization (%)	57.6	57.3	57.0	58.1	57.8

Note: Standard errors taking into account the survey design are shown in parentheses.

Source: HSES 2007/08.

Table 14. Poverty by household size

	Household size							
	1	2	3	4	5	6	7	8 plus
National								
Headcount	35.2 (0.8)	8.9 (1.1)	21.8 (1.0)	30.3 (1.1)	38.6 (1.4)	47.8 (1.9)	53.6 (2.8)	69.0 (3.1)
Poverty gap	10.1 (0.3)	1.7 (0.3)	4.9 (0.3)	7.8 (0.4)	10.8 (0.5)	14.5 (0.7)	18.1 (1.2)	24.8 (1.6)
Severity	4.0 (0.2)	0.5 (0.1)	1.6 (0.1)	2.8 (0.2)	4.1 (0.2)	5.9 (0.4)	8.0 (0.7)	11.5 (1.0)
<i>Memorandum items:</i>								
Population share (%)	100.0	1.9	16.9	27.4	21.6	12.7	6.7	6.1
Share among the poor (%)	100.0	0.5	10.4	23.6	23.7	17.2	10.1	12.0
Dependency ratio (%)	38.9	50.4	33.5	38.7	38.8	40.1	38.2	40.2
Children (% household size)	26.4	0.3	24.1	33.8	34.7	35.5	33.5	35.5
Age of household head	44.9	53.5	42.2	41.6	43.8	45.6	48.4	50.1
Male household head (%)	78.0	45.3	75.1	86.5	90.3	87.5	84.4	77.8

Note: Standard errors taking into account the survey design are shown in parentheses.

Source: HSES 2007/08.

Table 15. Poverty by age of the household head

	National	<30	30 - 39	40 - 49	50 - 59	>=60
Headcount	35.2 (0.8)	33.9 (1.6)	38.3 (1.2)	36.3 (1.1)	31.9 (1.5)	31.6 (1.6)
Poverty gap	10.1 (0.3)	9.4 (0.6)	10.9 (0.4)	10.7 (0.5)	9.4 (0.6)	8.5 (0.5)
Severity	4.0 (0.2)	3.6 (0.3)	4.2 (0.2)	4.4 (0.3)	3.8 (0.3)	3.2 (0.3)
<i>Memorandum items:</i>						
Population share (%)	100.0	11.0	28.0	31.3	16.4	13.4
Share among the poor (%)	100.0	10.5	30.5	32.2	14.8	12.0
Household size	3.9	3.2	4.0	4.4	4.1	3.1
Dependency ratio (%)	38.9	32.2	44.8	25.7	21.9	71.9
Children (% household size)	26.4	30.1	43.2	24.5	13.5	11.1
Age of household head	44.9	25.7	34.7	44.4	53.8	69.2
Male household head (%)	78.0	87.7	85.1	80.0	72.7	60.4

Note: Standard errors taking into account the survey design are shown in parentheses.

Source: HSES 2007/08.

Table 16. Poverty by gender of the household head

	National		Urban		Rural	
	Female	Male	Female	Male	Female	Male
Headcount	34.7 (1.4)	35.3 (0.9)	30.6 (1.7)	25.8 (1.1)	45.0 (2.4)	46.8 (1.3)
Poverty gap	10.3 (0.6)	10.0 (0.3)	8.9 (0.7)	7.3 (0.4)	14.0 (1.0)	13.3 (0.5)
Severity	4.2 (0.3)	4.0 (0.2)	3.6 (0.4)	2.9 (0.2)	5.7 (0.5)	5.2 (0.2)
<i>Memorandum items:</i>						
Population share (%)	17.7	82.3	22.0	78.0	12.0	88.0
Share among the poor (%)	17.5	82.5	25.1	74.9	11.5	88.5
Household size	3.1	4.1	3.3	4.1	2.8	4.1
Dependency ratio (%)	44.7	37.2	42.0	35.8	50.7	38.9
Children (% household size)	22.6	27.5	23.3	25.6	21.1	29.6
Age of household head	51.0	43.2	49.7	44.3	53.7	41.8
Married, living together (%)	10.2	92.8	11.6	92.9	6.6	92.8
Separated, divorced, widowed (%)	78.3	4.1	78.3	4.6	78.5	3.5

Note: Standard errors taking into account the survey design are shown in parentheses.

Source: HSES 2007/08.

Table 17. Poverty by highest level of educational completed of the household head

	National	None	Primary	Lower secondary	Complete secondary	Vocational	Diploma	University	Other
Headcount	35.2 (0.8)	58.0 (2.8)	51.5 (1.7)	48.1 (1.4)	34.6 (1.2)	25.3 (1.6)	9.5 (1.1)	8.8 (1.4)	6.1 (4.5)
Poverty gap	10.1 (0.3)	19.8 (1.4)	16.0 (0.7)	14.1 (0.5)	9.3 (0.4)	6.9 (0.5)	2.1 (0.3)	2.3 (0.5)	0.6 (0.4)
Severity	4.0 (0.2)	8.9 (0.9)	6.7 (0.4)	5.6 (0.3)	3.5 (0.2)	2.6 (0.3)	0.6 (0.1)	0.8 (0.2)	0.1 (0.0)
<i>Memorandum items:</i>									
Population share (%)	100.0	3.9	11.9	23.1	31.4	13.0	10.0	6.0	0.6
Share among the poor (%)	100.0	6.5	17.4	31.6	30.9	9.4	2.7	1.5	0.1
Household size	3.9	3.3	3.6	4.2	4.0	4.0	3.7	3.3	3.6
Dependency ratio (%)	38.9	52.8	49.6	37.4	35.8	36.7	38.6	32.6	30.4
Children (% household size)	26.4	22.3	20.9	29.6	30.1	25.1	19.7	26.0	24.7
Age of household head	44.9	52.8	52.6	42.7	40.9	47.1	50.0	37.9	39.8
Male household head (%)	78.0	59.9	71.2	85.5	80.9	72.2	80.1	74.7	80.9

Note: Standard errors taking into account the survey design are shown in parentheses.

Source: HSES 2007/08.

Table 18. Poverty by labor force participation of the household head

	National									
	Total	Agriculture		Employed		Unemployed				
				Industry	Services	Unspecified	Out of the labor force	Unspecified		
Headcount	35.2 (0.8)	34.3 (0.9)	49.1 (1.5)	32.8 (1.7)	20.9 (1.0)	36.1 (3.6)	54.4 (2.8)	34.9 (1.5)	35.9 (9.6)	
Poverty gap	10.1 (0.3)	9.4 (0.3)	13.7 (0.5)	9.3 (0.6)	5.3 (0.3)	10.8 (1.5)	19.6 (1.4)	10.7 (0.6)	8.8 (3.2)	
Severity	4.0 (0.2)	3.6 (0.1)	5.2 (0.3)	3.7 (0.3)	2.0 (0.2)	4.6 (0.9)	9.1 (0.9)	4.4 (0.3)	3.7 (1.9)	
<i>Memorandum items:</i>										
Population share (%)	100.0	75.7	28.5	14.5	30.3	2.4	4.2	19.9	0.3	
Share among the poor (%)	100.0	73.6	39.7	13.5	18.0	2.5	6.5	19.7	0.3	
Household size	3.9	4.0	4.0	4.1	3.9	4.2	4.1	3.5	3.4	
Dependency ratio (%)	38.9	35.4	40.0	32.5	32.2	38.6	34.1	51.4	37.2	
Children (% household size)	26.4	29.3	29.3	29.7	28.7	35.8	31.6	15.6	30.5	
Age of household head	44.9	41.0	42.2	39.8	40.6	39.3	38.6	58.8	43.2	
Male household head (%)	78.0	83.3	89.1	87.1	77.6	63.9	86.0	59.4	54.2	

Note: Standard errors taking into account the survey design are shown in parentheses.

Source: HSES 2007/08.

Table 19. Poverty by sector of employment of the household head

	National		Employed			Unemployed			Out of the labor force		Unspecified
	Herder	Private	Public	State	Unspecified	Unemployed	Pensioner	Other			
Headcount	35.2 (0.8)	49.0 (1.6)	29.2 (1.1)	22.4 (1.6)	14.6 (2.3)	44.6 (4.2)	54.4 (2.8)	32.0 (1.6)	43.7 (2.7)	35.9 (9.6)	
Poverty gap	10.1 (0.3)	13.4 (0.6)	8.0 (0.4)	5.7 (0.6)	4.5 (0.9)	15.0 (2.0)	19.6 (1.4)	9.4 (0.6)	14.9 (1.2)	8.8 (3.2)	
Severity	4.0 (0.2)	5.0 (0.3)	3.1 (0.2)	2.1 (0.3)	1.9 (0.5)	7.0 (1.3)	9.1 (0.9)	3.7 (0.3)	6.8 (0.7)	3.7 (1.9)	
<i>Memorandum items:</i>											
Population share (%)	100.0	24.4	34.7	11.4	3.4	1.8	4.2	14.9	5.0	0.3	
Share among the poor (%)	100.0	34.0	28.8	7.3	1.4	2.2	6.5	13.5	6.2	0.3	
Household size	3.9	3.9	4.1	3.9	3.9	3.7	4.1	3.3	4.0	3.4	
Dependency ratio (%)	38.9	40.8	33.0	30.7	32.2	42.4	34.1	58.3	25.9	37.2	
Children (% household size)	26.4	29.6	29.8	26.9	28.6	34.3	31.6	13.7	22.9	30.5	
Age of household head	44.9	42.0	39.9	42.3	41.0	40.3	38.6	63.6	41.1	43.2	
Male household head (%)	78.0	89.5	82.4	75.0	90.1	56.2	86.0	55.2	74.7	54.2	

Note: Pensioner refers to household heads receiving any pension or benefit from the state. Standard errors taking into account the survey design are shown in parentheses. Source: HSES 2007/08.

Table 20. Poverty by migrant status of the household head

	National		Urban		Rural	
	Non-migrant	Migrant	Non-migrant	Migrant	Non-migrant	Migrant
Headcount	40.1 (1.0)	27.8 (1.2)	27.6 (1.4)	26.3 (1.3)	49.4 (1.3)	33.9 (2.3)
Poverty gap	11.7 (0.4)	7.7 (0.4)	8.0 (0.5)	7.4 (0.5)	14.4 (0.5)	9.1 (0.8)
Severity	4.6 (0.2)	3.1 (0.2)	3.3 (0.3)	2.9 (0.2)	5.6 (0.3)	3.5 (0.4)
<i>Memorandum items:</i>						
Population share (%)	60.6	39.4	44.9	55.1	81.8	18.2
Share among the poor (%)	68.9	31.1	46.2	53.8	86.7	13.3
Household size	3.9	3.9	3.8	3.9	3.9	3.8
Dependency ratio (%)	38.2	40.0	34.0	40.3	41.3	38.7
Children (% household size)	27.5	24.6	25.6	24.6	29.0	24.8
Age of household head	43.2	47.4	43.2	47.8	43.3	45.9
Male household head (%)	79.9	75.1	73.5	73.9	84.7	79.8

Note: Standard errors taking into account the survey design are shown in parentheses.

Source: HSES 2007/08.

Table 21. Livestock holdings

	Cattle		Horses		Camels		Sheep		Goats		Bods	
	Holders (%)	Average among holders	Holders (%)	Average among holders	Holders (%)	Average among holders	Holders (%)	Average among holders	Holders (%)	Average among holders	Holders (%)	Average among holders
National	28.8	3.3	26.0	3.3	4.1	1.4	30.8	21.0	33.2	19.5	37.2	10.2
Urban	5.5	2.7	3.5	2.9	0.2	1.7	5.0	15.3	5.7	15.4	8.2	6.0
Rural	60.5	3.4	56.6	3.3	9.4	1.4	65.8	21.6	70.6	19.9	76.5	10.8
Ulaanbaatar	2.4	3.1	0.8	5.4	0.0	5.0	0.9	17.3	1.0	13.1	2.8	5.6
Aimag centers	10.5	2.5	7.9	2.5	0.5	1.7	11.6	15.1	13.3	15.7	17.0	6.1
Soum centers	40.6	2.7	30.5	2.5	2.0	1.1	39.4	12.6	45.4	12.8	54.2	6.4
Countryside	74.3	3.7	74.6	3.6	14.5	1.5	84.0	24.5	88.0	22.5	92.0	12.6
West	52.2	2.3	47.3	2.0	10.0	0.9	59.5	18.7	66.8	21.6	70.2	8.4
Highlands	49.1	4.0	45.8	3.3	2.4	1.8	52.9	21.1	55.3	16.2	59.8	10.9
Central a/	27.6	3.4	24.9	4.3	6.3	2.6	31.8	24.3	34.3	24.6	41.8	11.0
East	42.5	3.9	39.5	5.1	10.3	0.9	38.5	23.4	41.2	16.8	47.1	13.1
Non-poor	24.6	4.0	22.4	4.1	3.8	1.7	26.4	26.7	28.0	24.4	31.7	12.7
Poor	36.6	2.6	32.7	2.2	4.6	1.0	38.7	14.0	42.9	13.6	47.3	7.1

a/ Excludes Ulaanbaatar.

Note: The bod scale was used to estimate the size of the herd. These factors transform cattle, camels, sheep and goats into equivalent horses.

One horse is assumed to have the same value as one cattle, 0.67 camels, six sheep or eight goats. Cattle includes cows and yaks.

Source: HSES 2007/08.

Table 22. Poverty by ownership of livestock

	National		Urban		Rural	
	Non-herder	Herder	Non-herder	Herder	Non-herder	Herder
Headcount	29.6 (1.0)	44.8 (1.3)	26.4 (1.1)	31.7 (3.0)	46.2 (2.1)	46.7 (1.4)
Poverty gap	8.8 (0.4)	12.3 (0.5)	7.6 (0.4)	8.0 (0.9)	15.0 (0.8)	12.9 (0.5)
Severity	3.7 (0.2)	4.6 (0.2)	3.1 (0.2)	2.8 (0.4)	6.5 (0.4)	4.8 (0.3)
<i>Memorandum items:</i>						
Population share (%)	62.8	37.2	91.8	8.2	23.5	76.5
Share among the poor (%)	52.7	47.3	90.3	9.7	23.3	76.7
Household size	3.8	4.0	3.9	4.1	3.6	4.0
Dependency ratio (%)	37.2	41.8	36.9	43.6	38.5	41.6
Children (% household size)	25.0	28.9	24.9	27.2	25.6	29.1
Age of household head	45.3	44.0	45.5	47.5	44.4	43.5
Male household head (%)	73.2	86.4	72.9	83.6	74.8	86.8

Note: Standard errors taking into account the survey design are shown in parentheses.

Source: HSES 2007/08.

Table 23. Poverty by ownership of land

	National		Urban		Rural	
	No land	Land	No land	Land	No land	Land
Headcount	34.7 (0.8)	41.1 (2.5)	26.9 (1.1)	27.0 (3.8)	46.3 (1.3)	48.1 (3.0)
Poverty gap	10.0 (0.3)	11.7 (0.9)	7.6 (0.4)	8.3 (1.4)	13.4 (0.5)	13.4 (1.1)
Severity	3.9 (0.2)	4.6 (0.4)	3.1 (0.2)	3.4 (0.7)	5.2 (0.2)	5.2 (0.6)
<i>Memorandum items:</i>						
Population share (%)	91.8	8.2	95.2	4.8	87.1	12.9
Share among the poor (%)	90.4	9.6	95.2	4.8	86.7	13.3
Household size	3.8	4.4	3.9	4.3	3.8	4.4
Dependency ratio (%)	38.9	38.2	37.4	38.3	41.1	38.2
Children (% household size)	26.3	27.6	25.1	24.4	28.1	29.2
Age of household head	44.9	44.9	45.6	47.3	43.8	43.6
Male household head (%)	77.5	84.9	73.4	80.6	83.4	87.1

Note: Standard errors taking into account the survey design are shown in parentheses.

Source: HSES 2007/08.

Table 24. Poverty by possession of savings

	National		Urban		Rural	
	Non-saver	Saver	Non-saver	Saver	Non-saver	Saver
Headcount	40.6 (0.9)	18.3 (1.1)	32.6 (1.2)	10.7 (1.1)	51.0 (1.3)	30.6 (1.9)
Poverty gap	11.9 (0.3)	4.5 (0.3)	9.5 (0.5)	2.6 (0.4)	15.0 (0.5)	7.7 (0.6)
Severity	4.8 (0.2)	1.6 (0.2)	3.8 (0.2)	0.9 (0.2)	6.0 (0.3)	2.6 (0.3)
<i>Memorandum items:</i>						
Population share (%)	75.8	24.2	74.0	26.0	78.3	21.7
Share among the poor (%)	87.4	12.6	89.6	10.4	85.7	14.3
Household size	3.8	4.0	3.9	3.9	3.8	4.1
Dependency ratio (%)	38.9	38.7	37.5	37.2	40.7	41.3
Children (% household size)	25.0	30.9	23.6	29.0	26.7	34.2
Age of household head	45.6	42.4	46.6	43.3	44.5	40.8
Male household head (%)	76.7	82.4	71.6	80.0	83.1	86.7

Note: Standard errors taking into account the survey design are shown in parentheses.
Source: HSES 2007/08.

Table 25. Poverty by type of dwelling

	National			Urban			Rural					
	Ger	Apartment	House	Ger	Apartment	House	Ger	Apartment	House			
	Other	House	Other	House	Other	House	Other	House	Other			
Headcount	48.8 (1.1)	8.5 (0.8)	32.6 (1.3)	44.3 (7.7)	46.7 (1.8)	6.7 (0.8)	27.9 (1.5)	46.1 (9.9)	50.1 (1.4)	22.0 (3.1)	42.4 (2.2)	41.3 (12.2)
Poverty gap	14.6 (0.4)	2.2 (0.3)	8.6 (0.4)	12.9 (2.7)	14.2 (0.7)	1.9 (0.3)	7.4 (0.5)	14.7 (3.6)	14.8 (0.6)	5.0 (0.9)	11.4 (0.7)	9.6 (3.8)
Severity	5.9 (0.2)	0.9 (0.2)	3.3 (0.2)	4.7 (1.2)	5.9 (0.4)	0.8 (0.2)	2.8 (0.3)	5.6 (1.6)	5.9 (0.3)	1.7 (0.4)	4.2 (0.4)	3.2 (1.5)
<i>Memorandum items:</i>												
Population share (%)	45.7	20.0	33.8	0.5	28.8	30.9	39.8	0.5	68.6	5.3	25.7	0.4
Share among the poor (%)	63.3	4.8	31.3	0.6	50.0	7.7	41.3	0.9	73.8	2.5	23.4	0.4
Household size	3.9	3.5	4.2	3.4	4.0	3.5	4.2	3.4	3.8	3.7	4.1	3.3
Dependency ratio (%)	41.7	35.5	37.2	34.7	40.9	35.7	36.6	31.2	42.1	34.0	38.4	40.7
Children (% household size)	28.1	23.3	26.2	25.1	27.6	22.7	25.3	23.2	28.3	27.7	28.1	28.3
Age of household head	44.2	45.1	45.6	43.3	45.4	45.5	46.1	44.4	43.6	42.1	44.6	41.3
Male household head (%)	79.6	72.4	80.0	56.6	71.4	71.6	77.9	56.7	84.0	79.8	84.6	56.4

Note: Other includes student residences, company dormitories and any other building designed not to be inhabited by households.

Standard errors taking into account the survey design are shown in parentheses.

Source: HSES 2007/08.

Table 26. Poverty by access to infrastructure services

	Improved water sources a/		Sanitation b/		Electricity		All three	
	No	Yes	No	Yes	No	Yes	No	Yes
Headcount	44.0 (1.1)	24.8 (1.1)	48.8 (1.2)	25.0 (0.9)	51.1 (1.5)	29.7 (0.9)	43.9 (1.0)	18.3 (1.1)
Poverty gap	12.6 (0.4)	7.1 (0.4)	14.4 (0.5)	6.8 (0.3)	14.8 (0.6)	8.5 (0.3)	12.7 (0.4)	5.0 (0.4)
Severity	4.9 (0.2)	2.9 (0.2)	5.8 (0.2)	2.6 (0.2)	5.8 (0.3)	3.4 (0.2)	5.1 (0.2)	1.9 (0.2)
<i>Memorandum items:</i>								
Population share (%)	54.5	45.5	43.1	56.9	25.8	74.2	66.1	33.9
Share among the poor (%)	68.0	32.0	59.6	40.4	37.4	62.6	82.4	17.6
Household size	4.0	3.8	3.9	3.8	3.9	3.9	4.0	3.7
Dependency ratio (%)	40.1	37.4	40.4	37.8	41.8	37.8	40.1	36.7
Children (% household size)	27.3	25.4	28.2	25.1	28.6	25.6	27.4	24.6
Age of household head	44.6	45.1	43.8	45.7	43.2	45.4	44.6	45.4
Male household head (%)	80.1	75.6	81.4	75.6	85.7	75.4	79.8	74.8

a/ It refers to the percentage of the population with access to an improved water source such as household connection, public standpipe or protected well or spring. Unimproved sources include vendors, tanker trucks, water storage sites and unprotected wells and springs.

b/ Sanitation refers to the percentage of the population with access to improved sanitation facilities such as adequate excreta disposal facilities (private or shared but not public). They can range from simple but protected pit latrines to flush toilets with sewerage connection.

Note: Standard errors taking into account the survey design are shown in parentheses.

Source: HSES 2007/08.

Table 27. Poverty by access to infrastructure services in urban and rural areas

	Improved water sources a/		Sanitation b/		Electricity		All three										
	Urban		Rural		Urban		Rural										
	No	Yes	No	Yes	No	Yes	No	Yes									
Headcount	37.7 (1.6)	17.7 (1.3)	49.8 (1.4)	40.1 (1.8)	44.4 (2.1)	20.4 (1.1)	51.2 (1.5)	38.0 (1.7)	66.3 (7.0)	26.4 (1.1)	50.7 (1.6)	40.6 (1.7)	37.7 (1.5)	14.3 (1.2)	49.5 (1.3)	32.7 (2.2)	
Poverty gap	10.8 (0.6)	5.0 (0.5)	14.2 (0.6)	11.7 (0.7)	13.6 (0.9)	5.5 (0.4)	14.9 (0.6)	10.5 (0.6)	24.8 (4.2)	7.5 (0.4)	14.5 (0.6)	11.8 (0.6)	10.9 (0.6)	3.9 (0.4)	14.3 (0.5)	8.8 (0.8)	
Severity	4.4 (0.3)	2.0 (0.2)	5.5 (0.3)	4.7 (0.4)	5.8 (0.5)	2.1 (0.2)	5.8 (0.3)	4.2 (0.3)	12.6 (3.2)	3.0 (0.2)	5.6 (0.3)	4.7 (0.3)	4.4 (0.3)	1.5 (0.2)	5.6 (0.3)	3.4 (0.4)	
<i>Memorandum items:</i>																	
Population share (%)	45.8	54.2	66.3	33.7	26.9	73.1	65.1	34.9	1.2	98.8	59.1	40.9	53.8	46.2	82.7	17.3	
Share among the poor (%)	64.3	35.7	70.9	29.1	44.4	55.6	71.5	28.5	3.0	97.0	64.3	35.7	75.5	24.5	87.9	12.1	
Household size	4.1	3.7	3.9	3.8	4.2	3.8	3.8	3.9	3.7	3.9	3.9	3.9	4.1	3.7	3.9	3.9	
Dependency ratio (%)	38.5	36.6	41.6	39.2	38.7	37.0	41.2	39.9	41.1	37.4	41.9	39.2	38.5	36.4	41.4	37.7	
Children (% household size)	25.9	24.4	28.5	27.6	27.3	24.3	28.7	27.4	28.9	25.0	28.6	27.8	26.1	23.9	28.5	27.1	
Age of household head	46.0	45.5	43.4	44.4	45.3	45.8	43.0	45.2	43.4	45.7	43.2	44.5	45.8	45.6	43.6	44.6	
Male household head (%)	74.1	73.5	85.5	80.4	73.6	73.8	85.4	80.8	78.2	73.7	85.9	80.8	74.1	73.4	84.5	80.3	

a/ It refers to the percentage of the population with access to an improved water source such as household connection, public standpipe or protected well or spring.

Unimproved sources include vendors, tanker trucks, water storage sites and unprotected wells and springs.

b/ Sanitation refers to the percentage of the population with access to improved sanitation facilities such as adequate excreta disposal facilities (private or shared but not public). They can range from simple but protected pit latrines to flush toilets with a sewerage connection.

Note: Standard errors taking into account the survey design are shown in parentheses.

Source: HSES 2007/08.

Table 28. Transfers and remittances received by the household

	Households with transfers (%)	Population with transfers (%)	Among those receiving		
			Average transfer per household (Togrog per month)	Share of consumption (%)	Share of total transfers (%)
Total	91.5	94.5	72 917	25.9	100.0
Pensions and allowances	88.9	93.1	58 242	22.2	77.7
State pension	27.1	25.0	101 980	41.5	41.5
Disability pension	7.8	8.5	52 000	19.9	6.1
Survivor pension	3.4	3.7	51 841	19.5	2.6
Maternity benefit	5.3	6.4	12 201	3.9	1.0
Baby care allowance	4.1	5.1	11 344	4.1	0.7
Child allowance	70.7	81.2	19 406	6.7	20.6
Others a/	13.0	15.3	26 803	9.2	5.2
Remittances and aid	21.8	20.2	68 229	17.9	22.3
Family and friends	18.9	17.1	74 474	19.5	21.1
Others b/	3.6	3.9	22 135	6.3	1.2
From within the country	4.7	4.4	158 646	35.4	11.1
From abroad	17.7	16.4	42 360	12.8	11.2

a/ Includes special pension, unemployment benefits, illness payments, funeral payments and other benefits.

b/ Includes the government, companies and organizations, NGOs, foreign organizations or individuals, and other sources.

Source: HSES 2007/08.

Table 29. Poverty by receipt of private and public transfers

	Private				Public			
	Urban		Rural		Urban		Rural	
	No	Yes	No	Yes	No	Yes	No	Yes
Headcount	28.2 (1.2)	23.3 (1.8)	46.7 (1.3)	45.4 (2.7)	9.9 (1.6)	28.3 (1.1)	20.7 (2.3)	48.1 (1.2)
Poverty gap	8.2 (0.4)	6.4 (0.6)	13.3 (0.5)	14.2 (1.2)	2.9 (0.7)	8.1 (0.4)	5.6 (0.9)	13.9 (0.5)
Severity	3.3 (0.2)	2.6 (0.3)	5.1 (0.2)	6.3 (0.7)	1.2 (0.4)	3.2 (0.2)	2.3 (0.5)	5.4 (0.2)
<i>Memorandum items:</i>								
Population share (%)	72.5	27.5	89.6	10.4	7.9	92.1	5.6	94.4
Share among the poor (%)	76.2	23.8	89.8	10.2	2.9	97.1	2.5	97.5
Household size	4.0	3.6	3.9	3.5	2.6	4.1	2.2	4.0
Dependency ratio (%)	35.6	41.9	40.8	40.9	3.7	42.0	1.8	45.0
Children (% household size)	25.7	23.6	28.6	25.5	2.1	28.2	0.7	31.2
Age of household head	44.8	47.8	43.7	44.4	41.4	46.3	39.5	44.2
Male household head (%)	77.5	64.8	85.3	72.4	70.3	74.2	86.5	83.5

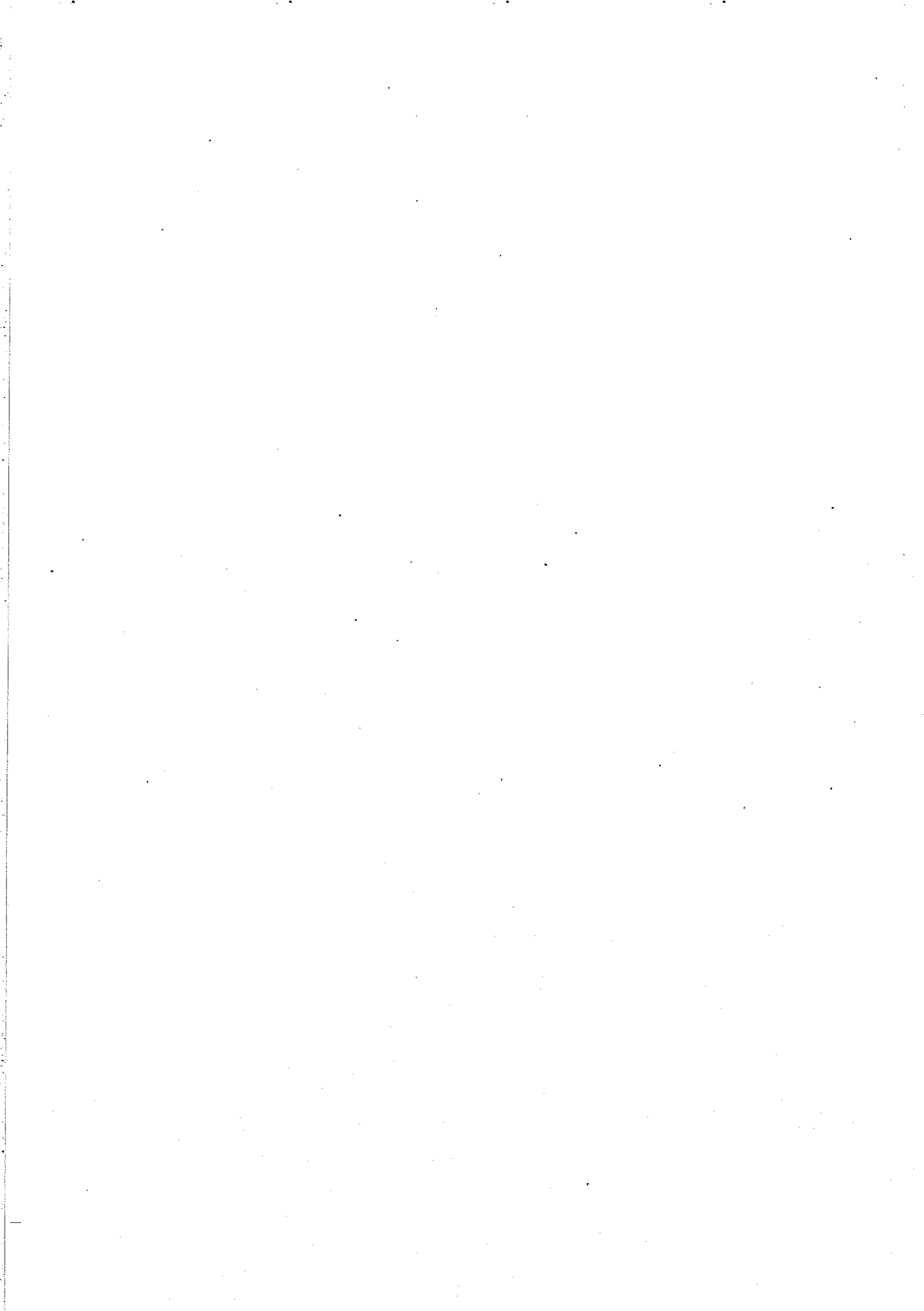
Note: Standard errors taking into account the survey design are shown in parentheses.

Source: HSES 2007/08.

Table 30. Poverty by receipt of retirement pensions

	National		Urban		Rural	
	No	Yes	No	Yes	No	Yes
Headcount	36.3 (0.9)	32.1 (1.3)	26.5 (1.2)	27.7 (1.7)	48.0 (1.3)	40.9 (1.9)
Poverty gap	10.5 (0.3)	8.8 (0.5)	7.8 (0.5)	7.5 (0.6)	13.8 (0.5)	11.6 (0.7)
Severity	4.2 (0.2)	3.3 (0.2)	3.2 (0.2)	2.8 (0.3)	5.4 (0.2)	4.4 (0.4)
<i>Memorandum items:</i>						
Population share (%)	75.0	25.0	71.0	29.0	80.5	19.5
Share among the poor (%)	77.3	22.7	70.0	30.0	82.9	17.1
Household size	4.0	3.6	3.9	3.8	4.1	3.1
Dependency ratio (%)	32.0	57.4	30.0	55.4	34.5	60.6
Children (% household size)	31.4	12.8	29.4	14.6	34.0	10.0
Age of household head	39.0	60.8	39.5	60.5	38.2	61.2
Male household head (%)	83.6	63.0	78.6	62.1	89.9	64.6

*Note: Standard errors taking into account the survey design are shown in parentheses.
Source: HSES 2007/08.*



Standard errors and confidence intervals of poverty estimates

Table 31. Poverty by urban and rural areas

					Observations	11 172
					Strata	3
					PSUs	1 249
	Estimate	Standard error	[95% confidence interval]		Obs.	
Headcount						
National	35.2	0.8	33.6	36.8		11 172
Urban	26.9	1.1	24.8	29.0		6 192
Rural	46.6	1.2	44.2	49.0		4 980
Poverty gap						
National	10.1	0.3	9.5	10.7		11 172
Urban	7.7	0.4	6.9	8.4		6 192
Rural	13.4	0.5	12.5	14.3		4 980
Severity						
National	4.0	0.2	3.7	4.3		11 172
Urban	3.1	0.2	2.7	3.5		6 192
Rural	5.2	0.2	4.8	5.7		4 980

Note: Poverty measures were calculated taking into account the survey design i.e. strata, primary sampling units and population weights.

Source: HSES 2007/08.

Table 32. Poverty by analytical domain

					Observations
					11 172
					Strata 3
					PSUs 1 249
	Estimate	Standard error	[95% confidence interval]		Obs.
Headcount					
Ulaanbaatar	21.9	1.4	19.3	24.6	3 571
Aimag centers	34.9	1.8	31.5	38.3	2 621
Soum centers	42.0	1.8	38.6	45.4	2 021
Countryside	49.7	1.6	46.6	52.8	2 959
Poverty gap					
Ulaanbaatar	6.3	0.5	5.3	7.3	3 571
Aimag centers	9.9	0.7	8.6	11.2	2 621
Soum centers	12.7	0.7	11.4	14.0	2 021
Countryside	13.9	0.6	12.7	15.1	2 959
Severity					
Ulaanbaatar	2.6	0.2	2.1	3.1	3 571
Aimag centers	3.9	0.3	3.3	4.6	2 621
Soum centers	5.2	0.3	4.5	5.8	2 021
Countryside	5.3	0.3	4.7	5.8	2 959

Note: Poverty measures were calculated taking into account the survey design i.e. strata, primary sampling units and population weights.

Source: HSES 2007/08.

Table 33. Poverty by region

				Observations	11 172
				Strata	3
				PSUs	1 249
	Estimate	Standard error	[95% confidence interval]		Obs.
Headcount					
West	47.1	2.0	43.1	51.1	1 836
Highlands	46.6	1.8	43.1	50.0	2 566
Central	30.7	1.7	27.5	34.0	2 179
East	46.7	2.8	41.2	52.2	1 020
Ulaanbaatar	21.9	1.4	19.3	24.6	3 571
Poverty gap					
West	12.8	0.7	11.4	14.2	1 836
Highlands	13.6	0.7	12.3	14.9	2 566
Central	8.4	0.6	7.2	9.5	2 179
East	14.9	1.3	12.4	17.5	1 020
Ulaanbaatar	6.3	0.5	5.3	7.3	3 571
Severity					
West	4.7	0.3	4.0	5.3	1 836
Highlands	5.3	0.3	4.7	6.0	2 566
Central	3.3	0.3	2.7	3.8	2 179
East	6.6	0.7	5.1	8.0	1 020
Ulaanbaatar	2.6	0.2	2.1	3.1	3 571

Note: Poverty measures were calculated taking into account the survey design i.e. strata, primary sampling units and population weights.

Source: HSES 2007/08.

Table 34. Poverty by quarter

				Observations	11 172
				Strata	3
				PSUs	1 249
	Estimate	Standard error	[95% confidence interval]		Obs.
Headcount					
July - September 2007	25.1	1.5	22.2	28.0	2 775
October - December 2007	33.3	1.6	30.2	36.4	2 796
January - March 2008	40.5	1.8	37.0	44.0	2 797
April - June 2008	42.1	1.8	38.6	45.6	2 804
Poverty gap					
July - September 2007	6.9	0.5	5.8	7.9	2 775
October - December 2007	9.3	0.6	8.2	10.4	2 796
January - March 2008	11.5	0.6	10.3	12.8	2 797
April - June 2008	12.7	0.7	11.3	14.0	2 804
Severity					
July - September 2007	2.8	0.3	2.2	3.3	2 775
October - December 2007	3.6	0.3	3.1	4.2	2 796
January - March 2008	4.5	0.3	3.9	5.1	2 797
April - June 2008	5.1	0.3	4.5	5.8	2 804

Note: Poverty measures were calculated taking into account the survey design i.e. strata, primary sampling units and population weights.

Source: HSES 2007/08.

Table 35. Poverty by age of the household head

					Observations
					Strata
					PSUs
					11 172
					3
					1 249
	Estimate	Standard error	[95% confidence interval]		Obs.
Headcount					
<30	33.9	1.6	30.7	37.0	1 471
30-39	38.3	1.2	36.0	40.7	3 019
40-49	36.3	1.1	34.0	38.5	3 115
50-59	31.9	1.5	28.9	34.9	1 743
60+	31.6	1.6	28.5	34.7	1 824
Poverty gap					
<30	9.4	0.6	8.2	10.6	1 471
30-39	10.9	0.4	10.0	11.7	3 019
40-49	10.7	0.5	9.8	11.6	3 115
50-59	9.4	0.6	8.2	10.5	1 743
60+	8.5	0.5	7.4	9.6	1 824
Severity					
<30	3.6	0.3	3.0	4.2	1 471
30-39	4.2	0.2	3.8	4.7	3 019
40-49	4.4	0.3	3.9	4.9	3 115
50-59	3.8	0.3	3.2	4.4	1 743
60+	3.2	0.3	2.6	3.7	1 824

Note: Poverty measures were calculated taking into account the survey design i.e. strata, primary sampling units and population weights.

Source: HSES 2007/08.

Table 36. Poverty by gender of the household head

	Estimate	Standard error	[95% confidence interval]		Obs.
					Observations 11 172
					Strata 3
					PSUs 1 249
<hr/>					
National					
Headcount					
Men	35.3	0.9	33.7	37.0	8 768
Women	34.7	1.4	32.0	37.4	2 404
Poverty gap					
Men	10.0	0.3	9.4	10.7	8 768
Women	10.3	0.6	9.3	11.4	2 404
Severity					
Men	4.0	0.2	3.6	4.3	8 768
Women	4.2	0.3	3.6	4.8	2 404
Urban and rural areas					
Headcount					
Men urban	25.8	1.1	23.6	28.1	4 605
Men rural	46.8	1.3	44.3	49.3	4 163
Women urban	30.6	1.7	27.3	34.0	1 587
Women rural	45.0	2.4	40.4	49.6	817
Poverty gap					
Men urban	7.3	0.4	6.5	8.1	4 605
Men rural	13.3	0.5	12.4	14.2	4 163
Women urban	8.9	0.7	7.6	10.2	1 587
Women rural	14.0	1.0	12.1	15.9	817
Severity					
Men urban	2.9	0.2	2.5	3.4	4 605
Men rural	5.2	0.2	4.7	5.6	4 163
Women urban	3.6	0.4	2.9	4.3	1 587
Women rural	5.7	0.5	4.8	6.7	817

Note: Poverty measures were calculated taking into account the survey design i.e. strata, primary sampling units and population weights.

Source: HSES 2007/08.

Table 37. Poverty by highest educational attainment of the household head

				Observations	11 172
				Strata	3
				PSUs	1 249
	Estimate	Standard error	[95% confidence interval]		Obs.
Headcount					
None	58.0	2.8	52.6	63.5	537
Primary	51.5	1.7	48.2	54.8	1 529
Lower secondary	48.1	1.4	45.4	50.8	2 502
Complete secondary	34.6	1.2	32.2	37.1	3 332
Vocational	25.3	1.6	22.3	28.4	1 380
Higher diploma	9.5	1.1	7.3	11.8	1 102
University	8.8	1.4	6.0	11.6	727
Other	6.1	4.5	-2.7	15.0	63
Poverty gap					
None	19.8	1.4	17.1	22.5	537
Primary	16.0	0.7	14.5	17.4	1 529
Lower secondary	14.1	0.5	13.0	15.2	2 502
Complete secondary	9.3	0.4	8.4	10.1	3 332
Vocational	6.9	0.5	5.8	7.9	1 380
Higher diploma	2.1	0.3	1.5	2.7	1 102
University	2.3	0.5	1.3	3.3	727
Other	0.6	0.4	-0.2	1.3	63
Severity					
None	8.9	0.9	7.2	10.6	537
Primary	6.7	0.4	5.9	7.5	1 529
Lower secondary	5.6	0.3	5.1	6.2	2 502
Complete secondary	3.5	0.2	3.1	3.9	3 332
Vocational	2.6	0.3	2.1	3.1	1 380
Higher diploma	0.6	0.1	0.4	0.9	1 102
University	0.8	0.2	0.4	1.3	727
Other	0.1	0.0	0.0	0.2	63

Note: Poverty measures were calculated taking into account the survey design i.e. strata, primary sampling units and population weights.

Source: HSES 2007/08.

Table 38. Poverty by migrant status of the household head

	Estimate	Standard error	[95% confidence interval]		Obs.
					Observations 11 172
					Strata 3
					PSUs 1 249
<hr/>					
National					
Headcount					
Non-migrant	40.1	1.0	38.2	42.0	6 987
Migrant	27.8	1.2	25.5	30.0	4 185
Poverty gap					
Non-migrant	11.7	0.4	10.9	12.4	6 987
Migrant	7.7	0.4	6.9	8.5	4 185
Severity					
Non-migrant	4.6	0.2	4.3	5.0	6 987
Migrant	3.1	0.2	2.6	3.5	4 185
Urban and rural areas					
Headcount					
Non-migrant urban	27.6	1.4	24.9	30.3	2 928
Non-migrant rural	49.4	1.3	46.8	52.0	4 059
Migrant urban	26.3	1.3	23.7	28.9	3 264
Migrant rural	33.9	2.3	29.4	38.4	921
Poverty gap					
Non-migrant urban	8.0	0.5	7.0	9.1	2 928
Non-migrant rural	14.4	0.5	13.4	15.4	4 059
Migrant urban	7.4	0.5	6.5	8.3	3 264
Migrant rural	9.1	0.8	7.6	10.6	921
Severity					
Non-migrant urban	3.3	0.3	2.8	3.8	2 928
Non-migrant rural	5.6	0.3	5.1	6.1	4 059
Migrant urban	2.9	0.2	2.5	3.4	3 264
Migrant rural	3.5	0.4	2.8	4.2	921

Note: Poverty measures were calculated taking into account the survey design i.e. strata, primary sampling units and population weights.

Source: HSES 2007/08.

Table 39. Poverty by ownership of livestock

					Observations
					11 172
					Strata
					3
					PSUs
					1 249
	Estimate	Standard error	[95% confidence interval]		Obs.
National					
Headcount					
Non-herder	29.6	1.0	27.6	31.5	6 878
Herder	44.8	1.3	42.3	47.3	4 294
Poverty gap					
Non-herder	8.8	0.4	8.1	9.5	6 878
Herder	12.3	0.5	11.3	13.2	4 294
Severity					
Non-herder	3.7	0.2	3.3	4.0	6 878
Herder	4.6	0.2	4.1	5.0	4 294
Urban and rural areas					
Headcount					
Non-herder urban	26.4	1.1	24.3	28.6	5 609
Non-herder rural	46.2	2.1	42.1	50.2	1 269
Herder urban	31.7	3.0	25.7	37.6	583
Herder rural	46.7	1.4	44.0	49.4	3 711
Poverty gap					
Non-herder urban	7.6	0.4	6.8	8.5	5 609
Non-herder rural	15.0	0.8	13.4	16.6	1 269
Herder urban	8.0	0.9	6.1	9.8	583
Herder rural	12.9	0.5	11.9	13.9	3 711
Severity					
Non-herder urban	3.1	0.2	2.7	3.5	5 609
Non-herder rural	6.5	0.4	5.7	7.3	1 269
Herder urban	2.8	0.4	2.0	3.6	583
Herder rural	4.8	0.3	4.4	5.3	3 711

Note: Poverty measures were calculated taking into account the survey design i.e. strata, primary sampling units and population weights.

Source: HSES 2007/08.

Table 40. Poverty by possession of savings

					Observations
					11 172
					Strata 3
					PSUs 1 249
	Estimate	Standard error	[95% confidence interval]		Obs.
National					
Headcount					
Non-saver	40.6	0.9	38.9	42.4	8 559
Saver	18.3	1.1	16.2	20.4	2 613
Poverty gap					
Non-saver	11.9	0.3	11.2	12.5	8 559
Saver	4.5	0.3	3.9	5.2	2 613
Severity					
Non-saver	4.8	0.2	4.4	5.1	8 559
Saver	1.6	0.2	1.3	1.9	2 613
Urban and rural areas					
Headcount					
Non-saver urban	32.6	1.2	30.2	34.9	4 589
Non-saver rural	51.0	1.3	48.5	53.5	3 970
Saver urban	10.7	1.1	8.6	12.9	1 603
Saver rural	30.6	1.9	26.9	34.4	1 010
Poverty gap					
Non-saver urban	9.5	0.5	8.5	10.4	4 589
Non-saver rural	15.0	0.5	14.0	16.0	3 970
Saver urban	2.6	0.4	1.9	3.3	1 603
Saver rural	7.7	0.6	6.5	8.9	1 010
Severity					
Non-saver urban	3.8	0.2	3.4	4.3	4 589
Non-saver rural	6.0	0.3	5.4	6.5	3 970
Saver urban	0.9	0.2	0.6	1.3	1 603
Saver rural	2.6	0.3	2.1	3.2	1 010

Note: Poverty measures were calculated taking into account the survey design i.e. strata, primary sampling units and population weights.

Source: HSES 2007/08.

Table 41. Poverty by type of dwelling

	Estimate	Standard error	[95% confidence interval]		Obs.
					Observations 11 172
					Strata 3
					PSUs 1 249
<hr/>					
National					
Headcount					
Ger	48.8	3.1	46.6	51.0	5 341
Apartment	8.5	0.8	6.8	10.1	2 304
House	32.6	1.3	30.1	35.1	3 464
Other	44.3	7.7	29.3	59.4	63
Poverty gap					
Ger	14.6	0.4	13.7	15.5	5 341
Apartment	2.2	0.3	1.6	2.8	2 304
House	8.6	0.4	7.8	9.5	3 464
Other	12.9	2.7	7.6	18.3	63
Severity					
Ger	5.9	0.2	5.5	6.4	5 341
Apartment	0.9	0.2	0.6	1.2	2 304
House	3.3	0.2	2.8	3.7	3 464
Other	4.7	1.2	2.4	7.0	63
Urban and rural areas					
Headcount					
Ger urban	46.7	1.8	43.2	50.2	1 831
Ger rural	50.1	1.4	47.2	52.9	3 510
Apartment urban	6.7	0.8	5.1	8.4	2 018
Apartment rural	22.0	3.1	15.9	28.1	286
House urban	27.9	1.5	24.9	30.8	2 303
House rural	42.4	2.2	38.2	46.6	1 161
Other urban	46.1	9.9	26.7	65.4	40
Other rural	41.3	12.2	17.3	65.2	23
Poverty gap					
Ger urban	14.2	0.7	12.7	15.6	1 831
Ger rural	14.8	0.6	13.7	15.9	3 510
Apartment urban	1.9	0.3	1.3	2.5	2 018
Apartment rural	5.0	0.9	3.2	6.8	286
House urban	7.4	0.5	6.3	8.4	2 303
House rural	11.4	0.7	9.9	12.8	1 161
Other urban	14.7	3.6	7.6	21.9	40
Other rural	9.6	3.8	2.2	17.0	23
Severity					
Ger urban	5.9	0.4	5.2	6.7	1 831
Ger rural	5.9	0.3	5.3	6.5	3 510
Apartment urban	0.8	0.2	0.5	1.1	2 018
Apartment rural	1.7	0.4	1.0	2.5	286
House urban	2.8	0.3	2.3	3.3	2 303
House rural	4.2	0.4	3.5	4.9	1 161
Other urban	5.6	1.6	2.4	8.7	40
Other rural	3.2	1.5	0.2	6.2	23

Note: Poverty measures were calculated taking into account the survey design i.e. strata, primary sampling units and population weights.
Source: HSES 2007/08.

Table 42. Poverty by access to improved water sources

					Observations
					11 172
					Strata
					3
					PSUs
					1 249
	Estimate	Standard error	[95% confidence interval]		Obs.
National					
Headcount					
No	44.0	1.1	41.9	46.1	6 020
Yes	24.8	1.1	22.6	26.9	5 152
Poverty gap					
No	12.6	0.4	11.8	13.4	6 020
Yes	7.1	0.4	6.3	7.9	5 152
Severity					
No	4.9	0.2	4.5	5.3	6 020
Yes	2.9	0.2	2.5	3.3	5 152
Urban and rural areas					
Headcount					
No urban	37.7	1.6	34.6	40.8	2 751
No rural	49.8	1.4	47.0	52.7	3 269
Yes urban	17.7	1.3	15.2	20.2	3 441
Yes rural	40.1	1.8	36.5	43.8	1 711
Poverty gap					
No urban	10.8	0.6	9.6	12.0	2 751
No rural	14.2	0.6	13.1	15.3	3 269
Yes urban	5.0	0.5	4.1	5.9	3 441
Yes rural	11.7	0.7	10.3	13.1	1 711
Severity					
No urban	4.4	0.3	3.7	5.0	2 751
No rural	5.5	0.3	5.0	6.0	3 269
Yes urban	2.0	0.2	1.6	2.5	3 441
Yes rural	4.7	0.4	4.0	5.4	1 711

Note: Poverty measures were calculated taking into account the survey design i.e. strata, primary sampling units and population weights.

Source: HSES 2007/08.

Table 43. Poverty by access to improved sanitation

	Estimate	Standard error	[95% confidence interval]		Obs.
					Observations 11 172
					Strata 3
					PSUs 1 249
<hr/>					
National					
Headcount					
No	48.8	1.2	46.4	51.2	4 819
Yes	25.0	0.9	23.1	26.9	6 353
Poverty gap					
No	14.4	0.5	13.5	15.4	4 819
Yes	6.8	0.3	6.1	7.5	6 353
Severity					
No	5.8	0.2	5.3	6.3	4 819
Yes	2.6	0.2	2.3	3.0	6 353
Urban and rural areas					
Headcount					
No urban	44.4	2.1	40.3	48.6	1 582
No rural	51.2	1.5	48.3	54.1	3 237
Yes urban	20.4	1.1	18.3	22.6	4 610
Yes rural	38.0	1.7	34.7	41.3	1 743
Poverty gap					
No urban	13.6	0.9	11.9	15.3	1 582
No rural	14.9	0.6	13.8	16.0	3 237
Yes urban	5.5	0.4	4.7	6.2	4 610
Yes rural	10.5	0.6	9.3	11.8	1 743
Severity					
No urban	5.8	0.5	4.9	6.7	1 582
No rural	5.8	0.3	5.3	6.4	3 237
Yes urban	2.1	0.2	1.7	2.5	4 610
Yes rural	4.2	0.3	3.5	4.8	1 743

Note: Poverty measures were calculated taking into account the survey design i.e. strata, primary sampling units and population weights.

Source: HSES 2007/08.

Table 44. Poverty by access to electricity

				Observations	11 172
				Strata	3
				PSUs	1 249
	Estimate	Standard error	[95% confidence interval]		Obs.
National					
Headcount					
No	51.1	1.5	48.1	54.2	3 046
Yes	29.7	0.9	27.9	31.5	8 126
Poverty gap					
No	14.8	0.6	13.6	16.0	3 046
Yes	8.5	0.3	7.8	9.1	8 126
Severity					
No	5.8	0.3	5.2	6.4	3 046
Yes	3.4	0.2	3.1	3.7	8 126
Urban and rural areas					
Headcount					
No urban	66.3	7.0	52.5	80.1	96
No rural	50.7	1.6	47.6	53.8	2 950
Yes urban	26.4	1.1	24.3	28.5	6 096
Yes rural	40.6	1.7	37.3	43.9	2 030
Poverty gap					
No urban	24.8	4.2	16.5	33.0	96
No rural	14.5	0.6	13.3	15.7	2 950
Yes urban	7.5	0.4	6.7	8.2	6 096
Yes rural	11.8	0.6	10.6	13.0	2 030
Severity					
No urban	12.6	3.2	6.3	19.0	96
No rural	5.6	0.3	5.0	6.2	2 950
Yes urban	3.0	0.2	2.6	3.4	6 096
Yes rural	4.7	0.3	4.1	5.4	2 030

Note: Poverty measures were calculated taking into account the survey design i.e. strata, primary sampling units and population weights.

Source: HSES 2007/08.

Table 45. Poverty by access to improved water sources, improved sanitation and electricity

	Estimate	Standard error	[95% confidence interval]		Obs.
					Observations 11 172
					Strata 3
					PSUs 1 249
<hr/>					
National					
Headcount					
No	43.9	1.0	42.0	45.9	7 353
Yes	18.3	1.1	16.1	20.4	3 819
Poverty gap					
No	12.7	0.4	12.0	13.5	7 353
Yes	5.0	0.4	4.2	5.8	3 819
Severity					
No	5.1	0.2	4.7	5.4	7 353
Yes	1.9	0.2	1.5	2.3	3 819
Urban and rural areas					
Headcount					
No urban	37.7	1.5	34.8	40.6	3 240
No rural	49.5	1.3	46.9	52.0	4 113
Yes urban	14.3	1.2	11.9	16.6	2 952
Yes rural	32.7	2.2	28.4	37.1	867
Poverty gap					
No urban	10.9	0.6	9.7	12.0	3 240
No rural	14.3	0.5	13.4	15.3	4 113
Yes urban	3.9	0.4	3.1	4.8	2 952
Yes rural	8.8	0.8	7.2	10.4	867
Severity					
No urban	4.4	0.3	3.8	5.0	3 240
No rural	5.6	0.3	5.1	6.1	4 113
Yes urban	1.5	0.2	1.1	2.0	2 952
Yes rural	3.4	0.4	2.6	4.2	867

Note: Poverty measures were calculated taking into account the survey design i.e. strata, primary sampling units and population weights.

Source: HSES 2007/08.

