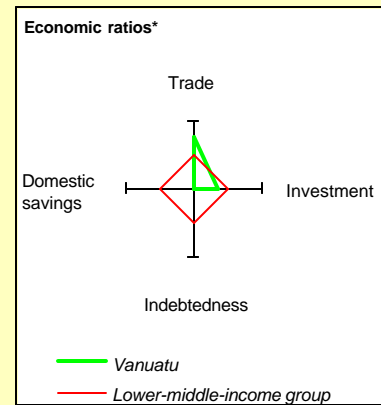
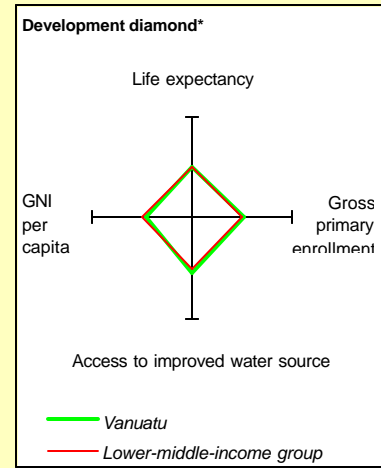


ANNEX I.

Vanuatu at a Glance

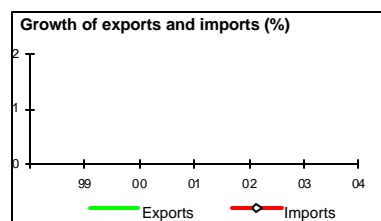
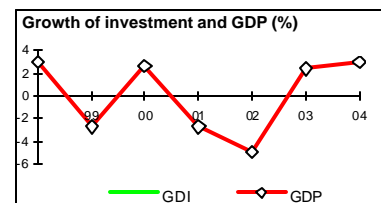
4/27/05

	Vanuatu	East Asia & Pacific	Lower-middle-income		
POVERTY and SOCIAL					
2004					
Population, mid-year (millions)	0.22	1,855	2,655		
GNI per capita (Atlas method, US\$)	1,340	1,080	1,480		
GNI (Atlas method, US\$ billions)	0.29	2,011	3,934		
Average annual growth, 1998-04					
Population (%)	2.4	1.0	0.9		
Labor force (%)	..	1.1	1.2		
Most recent estimate (latest year available, 1998-04)					
Poverty (% of population below national poverty line)		
Urban population (% of total population)	22	40	50		
Life expectancy at birth (years)	69	69	69		
Infant mortality (per 1,000 live births)	31	32	32		
Child malnutrition (% of children under 5)	..	15	11		
Access to an improved water source (% of population)	88	76	81		
Illiteracy (% of population age 15+)	..	10	10		
Gross primary enrollment (% of school-age population)	117	111	112		
Male	113	112	113		
Female	121	111	111		
KEY ECONOMIC RATIOS and LONG-TERM TRENDS					
	1984	1994	2003	2004	
GDP (US\$ billions)	0.13	0.21	0.28	0.32	
Gross domestic investment/GDP	20.1	23.8	
Exports of goods and services/GDP	58.2	46.5	
Gross domestic savings/GDP	17.1	19.0	
Gross national savings/GDP	28.1	18.0	
Current account balance/GDP	2.3	-7.2	-8.6	-3.6	
Interest payments/GDP	0.1	0.3	0.3	..	
Total debt/GDP	9.7	21.8	34.3	31.6	
Total debt service/exports	1.4	1.5	1.5	..	
Present value of debt/GDP	
Present value of debt/exports	
	1984-94	1994-04	2003	2004	2004-08
(average annual growth)					
GDP	2.8	0.3	2.4	3.0	..
GDP per capita	0.2	-2.5	0.2	0.7	..
Exports of goods and services	2.8



STRUCTURE of the ECONOMY

	1984	1994	2003	2004
(% of GDP)				
Agriculture	26.6	15.9	15.0	15.0
Industry	7.5	11.8	8.8	8.8
Manufacturing	3.5	4.9	3.6	3.6
Services	66.0	72.3	76.2	76.2
Private consumption	53.8	57.3
General government consumption	30.7	27.4
Imports of goods and services	62.8	55.0
(average annual growth)				
Agriculture	-1.1	0.9	6.2	3.0
Industry	4.7	-1.9	-0.3	3.0
Manufacturing	5.3	-4.6	0.7	3.0
Services	3.7	0.4	1.8	3.0
Private consumption	1.6
General government consumption	-0.3
Gross domestic investment	3.2
Imports of goods and services	0.1

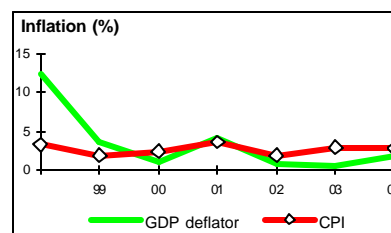


Note: 2004 data are preliminary estimates. Group data are for 2003.

* The diamonds show four key indicators in the country (in bold) compared with its income-group average. If data are missing, the diamond will be incomplete.

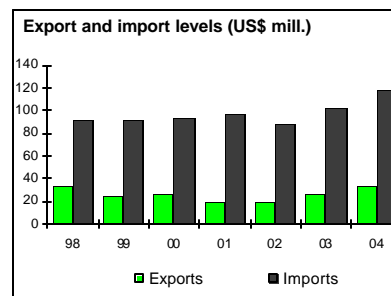
PRICES and GOVERNMENT FINANCE

	1984	1994	2003	2004
Domestic prices				
<i>(% change)</i>				
Consumer prices	5.5	2.3	3.0	2.8
Implicit GDP deflator	13.2	2.2	0.6	1.9
Government finance				
<i>(% of GDP, includes current grants)</i>				
Current revenue	..	37.3	20.9	20.9
Current budget balance	-0.5	1.8
Overall surplus/deficit	..	-3.0	-1.8	0.9



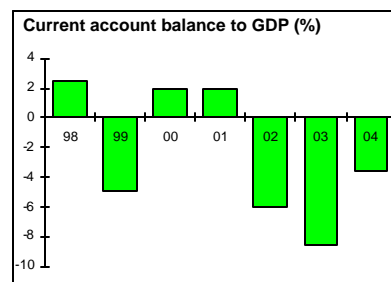
TRADE

	1984	1994	2003	2004
<i>(US\$ millions)</i>				
Total exports (fob)	..	25	27	34
Copra	..	8	2	4
Cocoa	..	2	2	1
Manufactures
Total imports (cif)	..	89	103	119
Food	12	13	27	27
Fuel and energy	..	6	15	17
Capital goods	..	26	21	27
Export price index (1995=100)
Import price index (1995=100)
Terms of trade (1995=100)



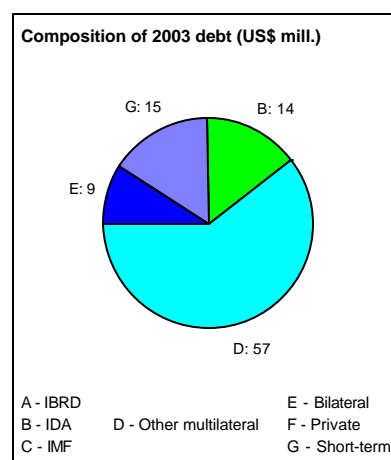
BALANCE of PAYMENTS

	1984	1994	2003	2004
<i>(US\$ millions)</i>				
Exports of goods and services	75	103	121	138
Imports of goods and services	72	108	141	150
Resource balance	3	-5	-20	-12
Net income	-19	-32	-12	-11
Net current transfers	19	22	8	12
Current account balance	3	-15	-24	-11
Financing items (net)	-6	13	19	1
Changes in net reserves	3	2	4	11
Memo:				
Reserves including gold (US\$ millions)	8	44	44	62
Conversion rate (DEC, local/US\$)	99.2	116.4	122.2	111.8



EXTERNAL DEBT and RESOURCE FLOWS

	1984	1994	2003	2004
<i>(US\$ millions)</i>				
Total debt outstanding and disbursed	13	47	95	100
IBRD	0	0	0	0
IDA	0	13	14	14
Total debt service	1	2	2	..
IBRD	0	0	0	..
IDA	0	0	0	..
Composition of net resource flows				
Official grants
Official creditors	1	1	-1	..
Private creditors	1	0	0	..
Foreign direct investment
Portfolio equity
World Bank program				
Commitments
Disbursements	0	1	0	..
Principal repayments	0	0	0	..
Net flows	0	1	0	..
Interest payments	0	0	0	..
Net transfers	0	0	0	..



Vanuatu – Social Indicators

	Latest single year			Same region/income group	
	1970-75	1980-85	1997-2003	East Asia & Pacific	Lower- middle- income
POPULATION					
Total population, mid-year (millions)	0.10	0.13	0.21	1,854.5	2,655.2
Growth rate (% annual average for period)	3.3	2.3	2.7	1.0	0.9
Urban population (% of population)	15.7	18.1	22.9	39.7	49.7
Total fertility rate (births per woman)	6.4	6.0	4.3	2.1	2.1
POVERTY					
<i>(% of population)</i>					
National headcount index
Urban headcount index
Rural headcount index
INCOME					
GNI per capita (US\$)	..	920	1,180	1,080	1,480
Consumer price index (1995=100)	..	56	118
Food price index (1995=100)	..	56	109
INCOME/CONSUMPTION DISTRIBUTION					
Gini index
Lowest quintile (% of income or consumption)
Highest quintile (% of income or consumption)
SOCIAL INDICATORS					
Public expenditure					
Health (% of GDP)	2.2	1.9	2.6
Education (% of GDP)	10.5	3.2	4.0
Social security and welfare (% of GDP)	..	0.3
Net primary school enrollment rate					
<i>(% of age group)</i>					
Total	93	92	91
Male	92	92	92
Female	94	92	91
Access to an improved water source					
<i>(% of population)</i>					
Total	88	76	81
Urban	63	93	94
Rural	94	67	70
Immunization rate					
<i>(% of children ages 12-23 months)</i>					
Measles	..	26	44	70	78
DPT	..	30	54	78	84
Child malnutrition (% under 5 years)	..	20	..	15	11
Life expectancy at birth					
<i>(years)</i>					
Total	..	62	69	69	69
Male	..	60	67	68	67
Female	..	64	70	71	71
Mortality					
Infant (per 1,000 live births)	107	77	34	32	32
Under 5 (per 1,000 live births)	160	110	42	42	40
Adult (15-59)					
Male (per 1,000 population)	240	184	214
Female (per 1,000 population)	185	129	135
Maternal (modeled, per 100,000 live births)	130
Births attended by skilled health staff (%)	68	..

Note: 0 or 0.0 means zero or less than half the unit shown. Net enrollment rate: break in series between 1997 and 1998 due to change from ISCED76 to ISCED97. Immunization: refers to children ages 12-23 months who received vaccinations before one year of age.

World Development Indicators database August 2004, World Bank

Vanuatu – Selected Indicators Table



Base-case (most likely) projection

	<i>Actual</i>			<i>Estimate</i>		<i>Projection</i>		
	2000	2001	2002	2003	2004	2005	2006	2007
Part A: Main Macro Aggregates								
<i>Annual growth rates, calculated from constant 1983 price data</i>								
GDP (mp) per capita	0.6	-4.7	-6.9	0.2	0.7
Total consumption per capita
GDP at market prices	2.7	-2.7	-4.9	2.4	3.0	2.8
Total consumption
Private consumption
Gross domestic investment (GDI)
Gross dom. fixed investment (GDFI)
Exports (GNFS)
of which Goods
Imports (GNFS)
of which Goods
<i>Savings-investment balances, as percentage of GDP</i>								
Gross Domestic investment
of which Government investment
Foreign savings	-1.9	-2.0	6.0	8.6	3.6
Gross national savings
Government savings	0.6	0.5	0.2	-0.5	1.8
Non government savings
Gross domestic savings
<i>Other</i>								
GDP inflation	1.2	4.1	0.9	0.6	1.9	8.5
Annual average exchange rate (LCU/US\$)	137.6	145.3	139.2	122.2	111.8
Index real average exchange rate (YR83 =100)
Terms of trade index (YR83 =100)
Incremental capital-output ratio (GDI based)
Import elasticity with respect to GDP
Money growth	5.4	5.6	-1.7	-0.8	7.8
Part B: Government Finance Indicators								
<i>Percentage of GDP</i>								
Total revenues, of which	22.0	21.6	22.3	20.9	20.9
Tax revenues	17.5	17.0	17.6	17.9	17.4
Total expenditures, of which	29.0	25.3	25.7	22.8	20.0
Consumption	17.7	16.9	18.1	17.1	15.7
Deficit(-)/Surplus(+)	-7.0	-3.7	-3.5	-1.8	0.9
Financing:
Foreign
Monetary sector	1.9	-0.6	1.9	-0.6	0.3
Other domestic
<i>Other</i>								
Total Debt/GDPmp
Total interest payments/Tax revenues	4.5	4.9	5.5	5.8	5.8
Part C: Debt & Liquidity Indicators								
<i>Total DOD and TDS</i>								
DOD (US\$ millions)	74.5	71.6	90.5	94.8	100.2
DOD / GDPmp ratio	30.5	30.5	38.5	34.3	31.6
TDS (US\$ millions)
TDS / exports (XGS) ratio
Total gross reserves (months' imports G&S)	2.6	2.6	3.0	3.0	3.9
Part D: External Financing Plan								
<i>(US\$, millions)</i>								
Official capital grants	10.7	11.8	6.1	4.8	6.0	4.2
Private investment (net)	21.0	13.7	7.9	16.7	17.0	17.7
Net Long term borrowing excl IMF	-20.1	-15.9	-2.2	-4.6	-6.0	-7.8
Adjustments to scheduled debt service	0.0	0.0	0.0	0.0	0.0	0.0	0.0	0.0
All other capital flows	-16.7	-11.5	8.8	2.4	-16.4	-5.9
Financing Requirements (incl IMF)	-5.1	-1.9	20.6	19.3	0.6	8.2
of which current account deficit	-4.7	-4.7	14.1	23.6	11.3	14.7

Vanuatu – Key Economic Indicators

Indicator	Actual			Estimate		Projected		
	2000	2001	2002	2003	2004	2005	2006	2007
National accounts (as % of GDP)								
Gross domestic product ^a	100	100	100	100	100	100	100	100
Agriculture	16	15	15	15	15
Industry	9	9	9	9	9
Services	75	76	76	76	76
Total Consumption
Gross domestic fixed investment
Government investment
Private investment
Exports (GNFS) ^b
Imports (GNFS)
Gross domestic savings
Gross national savings ^c
<i>Memorandum items</i>								
Gross domestic product (US\$ million at current prices)	245	235	235	276	317
GNI per capita (US\$, Atlas method)	1200	1170	1070	1150	1340
Real annual growth rates (% , calculated from 1983 prices)								
Gross domestic product at market prices	2.7	-2.7	-4.9	2.4	3.0	2.8
Gross Domestic Income
Real annual per capita growth rates (% , calculated from 1983 prices)								
Gross domestic product at market prices	0.6	-4.7	-6.9	0.2	0.7
Total consumption
Private consumption
Balance of Payments (US\$ millions)								
Exports (GNFS) ^b	157	139	101	121	138	156
Merchandise FOB	27	20	20	27	34	39
Imports (GNFS) ^b	148	151	120	141	150	165
Merchandise FOB	78	78	75	87	92	105
Resource balance	9	-12	-19	-20	-12	-8
Net current transfers	9	21	11	8	12	4
Current account balance	5	5	-14	-24	-11	-15
Net private foreign direct investment	20	18	8	15	16	17
Long-term loans (net)	-20	-16	-2	-5	-6	-8
Official	13	2	0	-1
Private	-33	-18	-2	-4
Other capital (net, incl. errors & omissions)	-5	-4	15	9	-9	-1
Change in reserves ^d	0	-3	-6	4	11	7
<i>Memorandum items</i>								
Resource balance (% of GDP)	3.6	-5.1	-7.9	-7.2	-3.7
Real annual growth rates (YR83 prices)								
Merchandise exports (FOB)
Primary
Manufactures
Merchandise imports (CIF)

(Continued)

Vanuatu – Key Economic Indicators*(Continued)*

Indicator	Actual			2003	Estimate		Projected	
	2000	2001	2002		2004	2005	2006	2007
Public finance (as % of GDP at market prices)^e								
Current revenues	22.0	21.6	22.3	20.9	20.9
Current expenditures	21.4	21.1	22.1	21.5	19.2
Current account surplus (+) or deficit (-)	0.6	0.5	0.2	-0.5	1.8
Capital expenditure	7.7	4.1	3.6	1.3	0.9
Foreign financing
Monetary indicators								
M2/GDP	100.2	104.4	107.0	103.0	105.8
Growth of M2 (%)	5.4	5.6	-1.7	-0.8	7.8
Private sector credit growth / total credit growth (%)
Price indices(YR83 =100)								
Merchandise export price index
Merchandise import price index
Merchandise terms of trade index
Real exchange rate (US\$/LCU) ^f
Real interest rates								
Consumer price index (% change)	2.5	3.7	2.0	3.0	2.8
GDP deflator (% change)	1.2	4.1	0.9	0.6	1.9	8.5

a. GDP at market prices

b. "GNFS" denotes "goods and nonfactor services."

c. Includes net unrequited transfers excluding official capital grants.

d. Includes use of IMF resources.

e. Consolidated central government.

f. "LCU" denotes "local currency units." An increase in US\$/LCU denotes appreciation.

Vanuatu – Key Exposure Indicators

Indicator	Actual			Estimate		Projected		
	2000	2001	2002	2003	2004	2005	2006	
Total debt outstanding and disbursed (TDO) (US\$m) ^a	75	72	91	95	100
Net disbursements (US\$m) ^a
Total debt service (TDS) (US\$m) ^a
Debt and debt service indicators (%)								
TDO/XGS ^b
TDO/GDP	30.5	30.5	38.5	34.3	31.6
TDS/XGS
Concessional/TDO
IBRD exposure indicators (%)								
IBRD DS/public DS
Preferred creditor DS/public DS (%) ^c
IBRD DS/XGS
IBRD TDO (US\$m) ^d	0	0	0	0	0
Of which present value of guarantees (US\$m)								
Share of IBRD portfolio (%)
IDA TDO (US\$m) ^d	13	12	13	14	14
IFC (US\$m)								
Loans								
Equity and quasi-equity /c								
MIGA								
MIGA guarantees (US\$m)								

a. Includes public and publicly guaranteed debt, private nonguaranteed, use of IMF credits and net short-term capital.

b. "XGS" denotes exports of goods and services, including workers' remittances.

c. Preferred creditors are defined as IBRD, IDA, the regional multilateral development banks, the IMF, and the Bank for International Settlements.

d. Includes present value of guarantees.

e. Includes equity and quasi-equity types of both loan and equity instruments.