


Poverty Reduction Strategy and Poverty Monitoring: Philippine Case Study

*Presented at the
Regional Conference on Poverty Monitoring in Asia
March 24-26, 2004
ADB Headquarters, Manila*

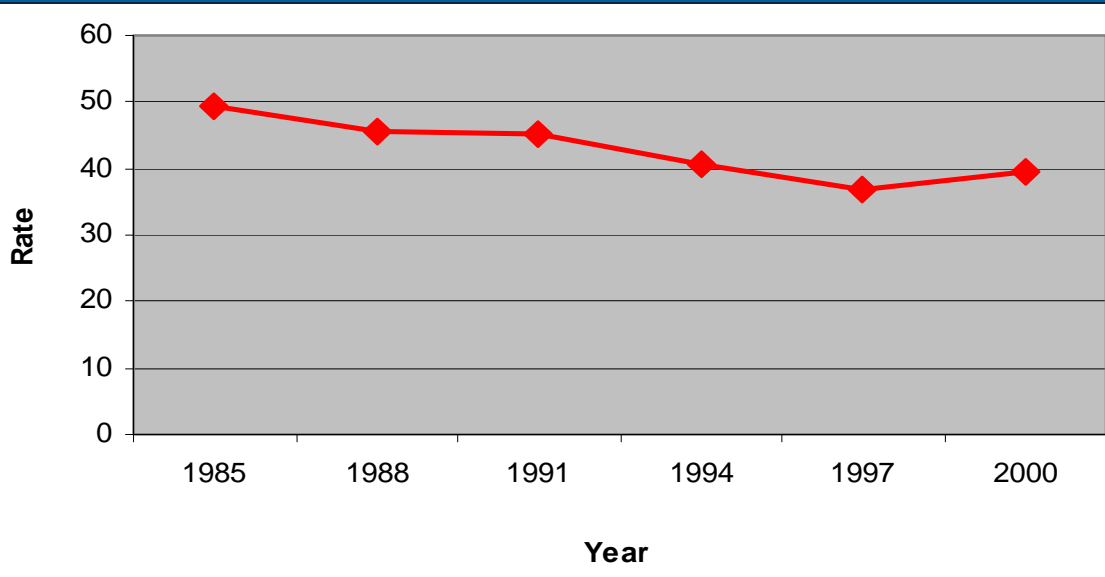
Outline of Presentation

- Poverty situation in the Philippines
 - Poverty reduction strategy and policy in the Philippines
 - State of poverty monitoring in the Philippines.
 - Concluding remarks
- 

Poverty Situation

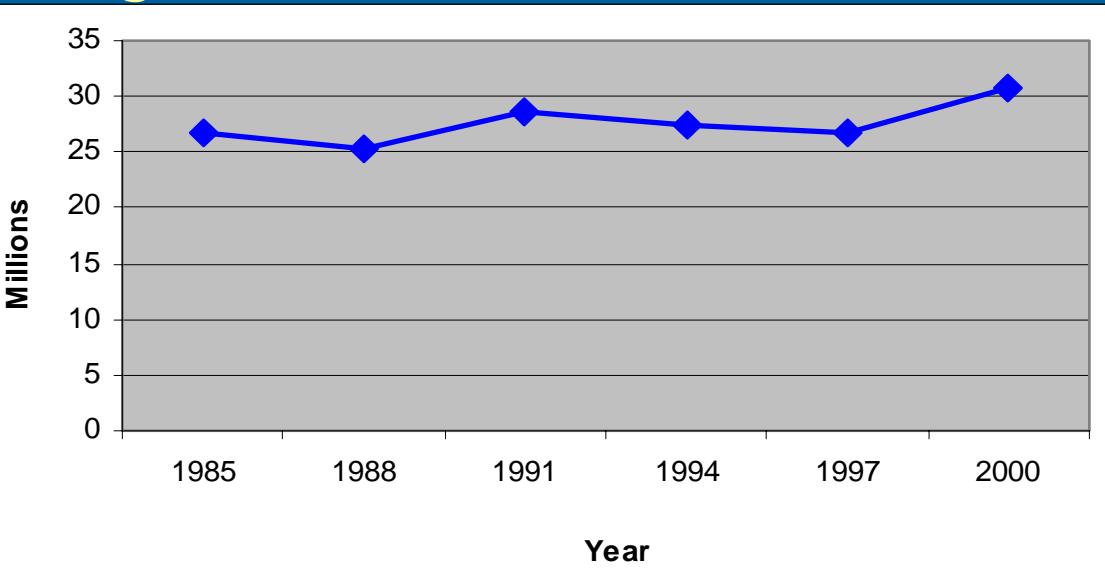
- Has been generally successful in improving the quality of life of its population.
 - There have been improvements in the different dimensions, some large and some modest.
 - However, regional disparities are still large and for some indicators have widened.
 - The population seems vulnerable to shocks as it reversed some of the positive trends.
- 

Incidence of Poor Families



While poverty incidence has declined the past 15 years, the number of poor families has actually increased.

Magnitude of Poor Families



Poverty incidence declined from 28.1% in 1997 to 28.4% in 2000 while the magnitude of poor families increased, from 3.98 million in 1997 to 4.34 million in 2000.

Incidence and Magnitude of Poor Families, 1997 and 2000

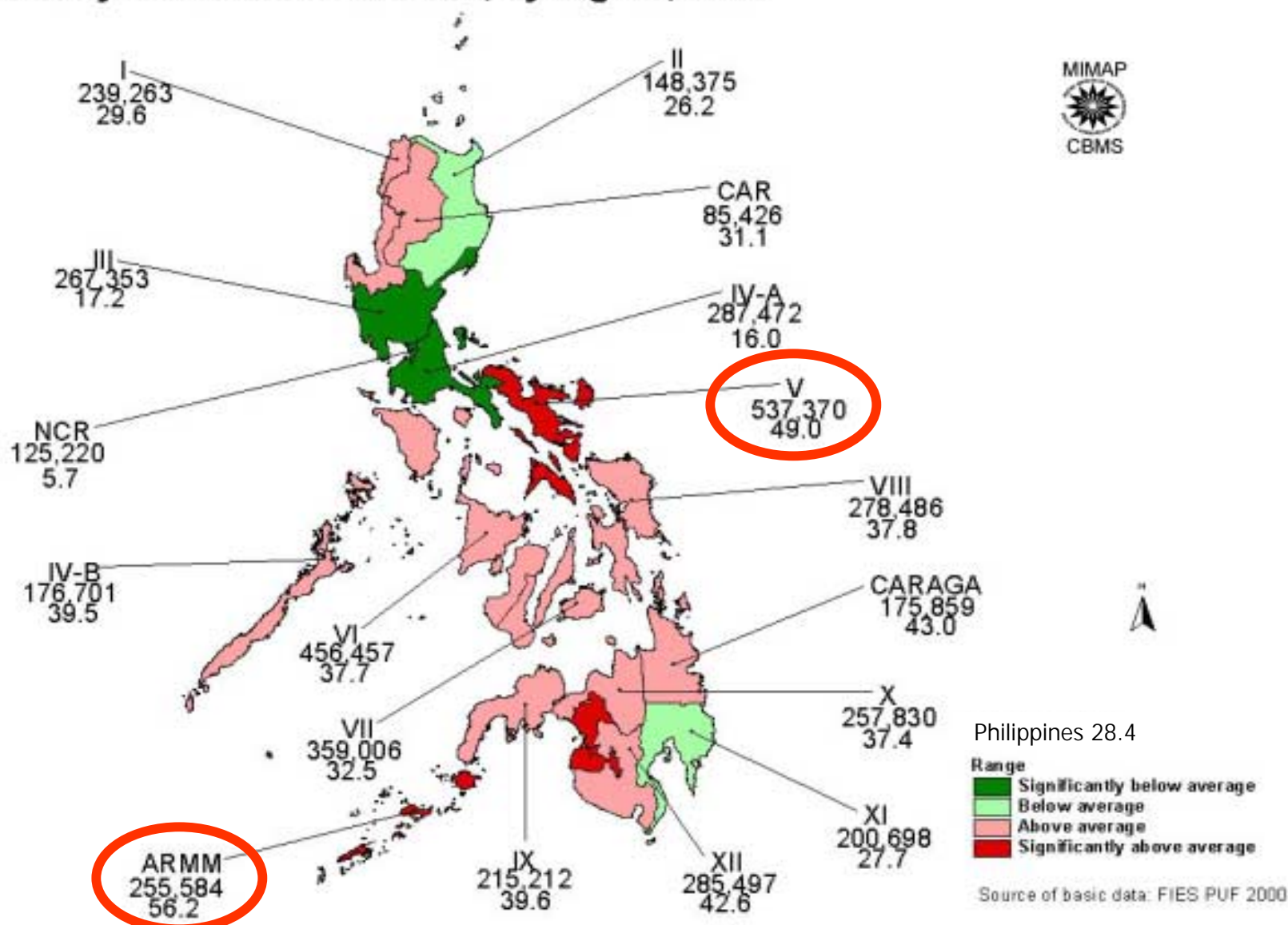
Region	Incidence		Magnitude	
	1997	2000	1997	2000
Philippines	28.1	28.4	3,982,760	4,338,780

Using the new methodology

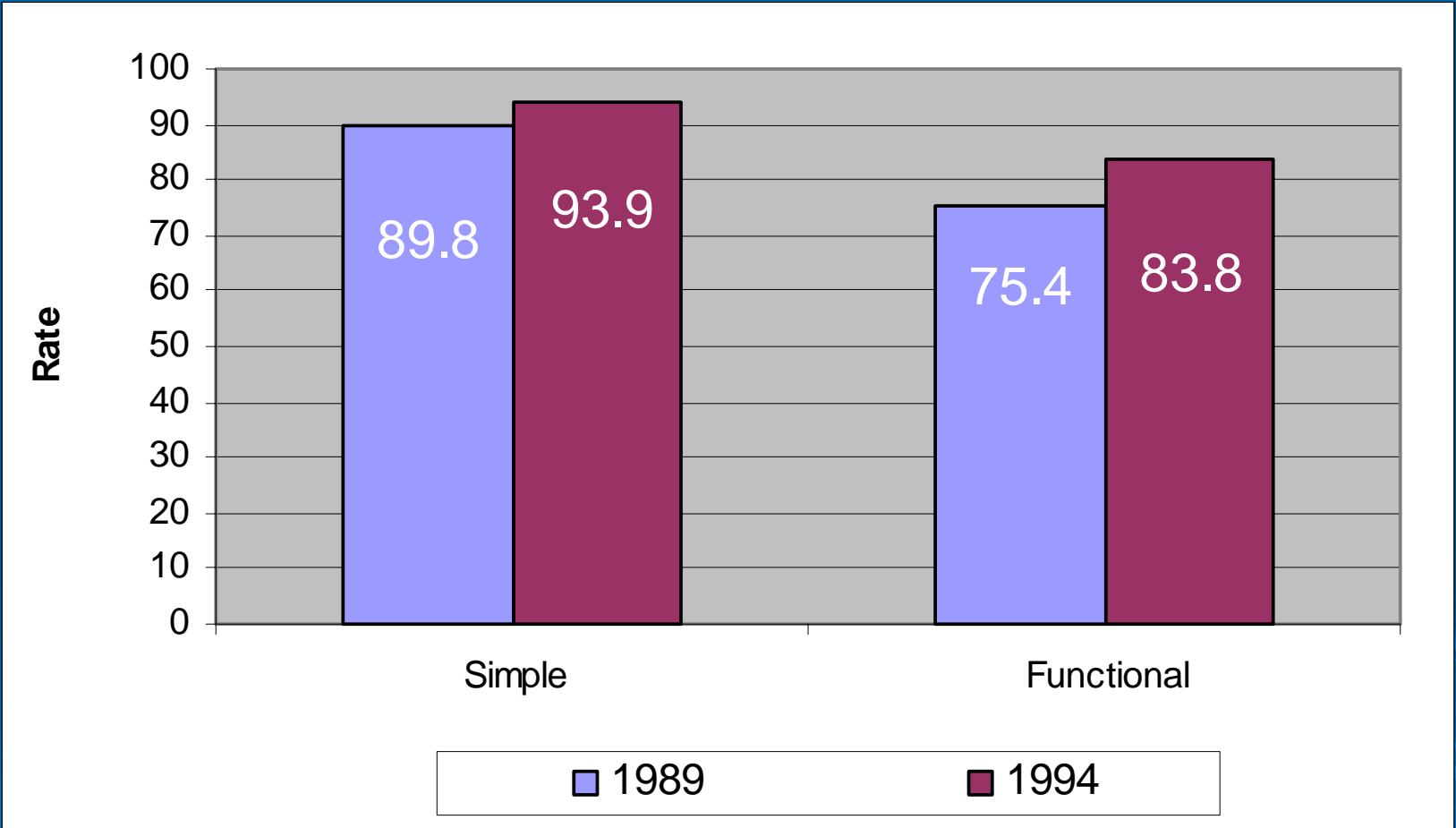
Source of data: National Statistical Coordination Board

The proportion of poor families is found to be highest in ARMM (56.2%) and Region V (49%).

Poverty Incidence of families, by region, 2000

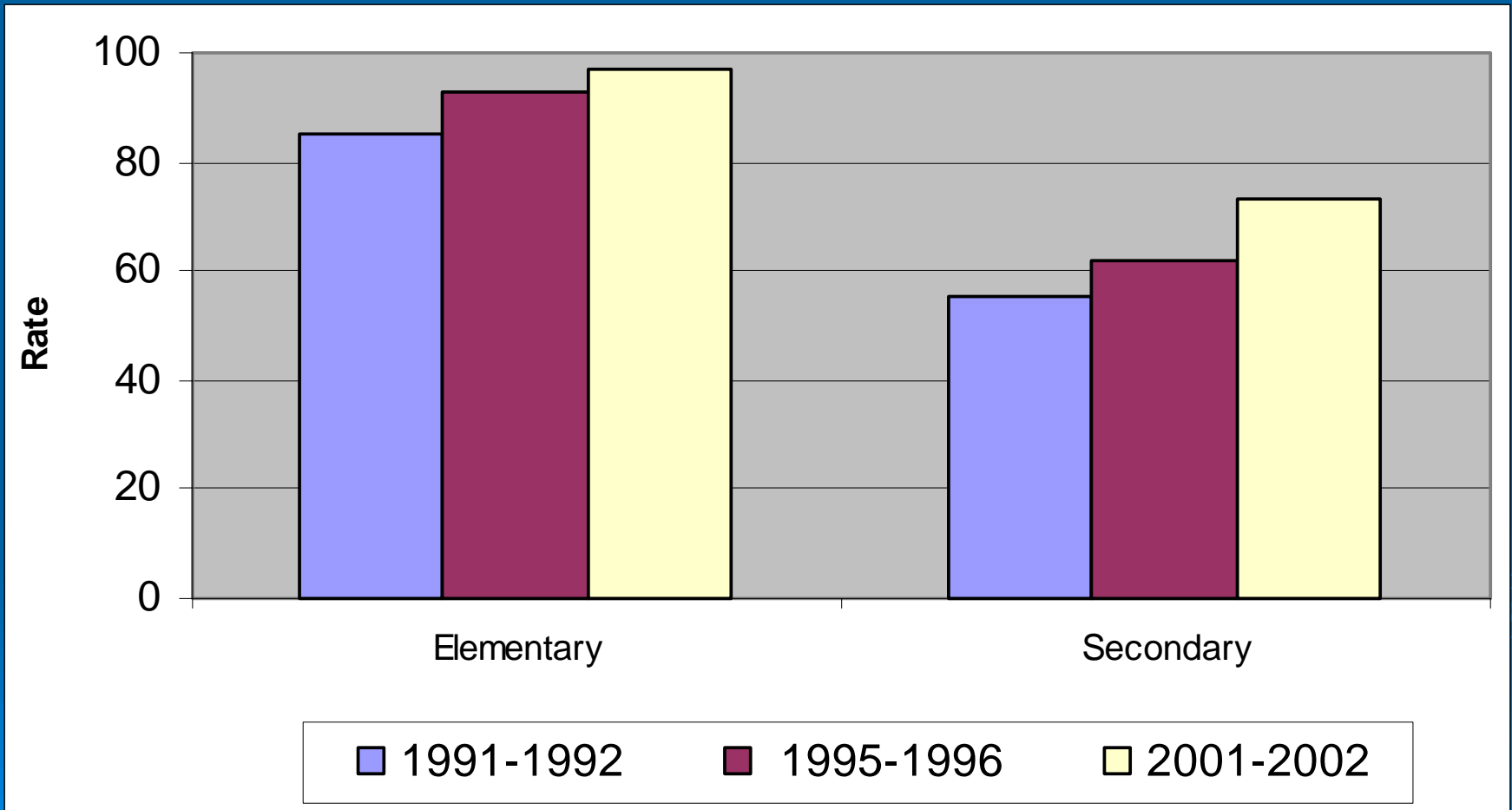


Simple and Functional Literacy Rates increased from the period 1989 to 1994.



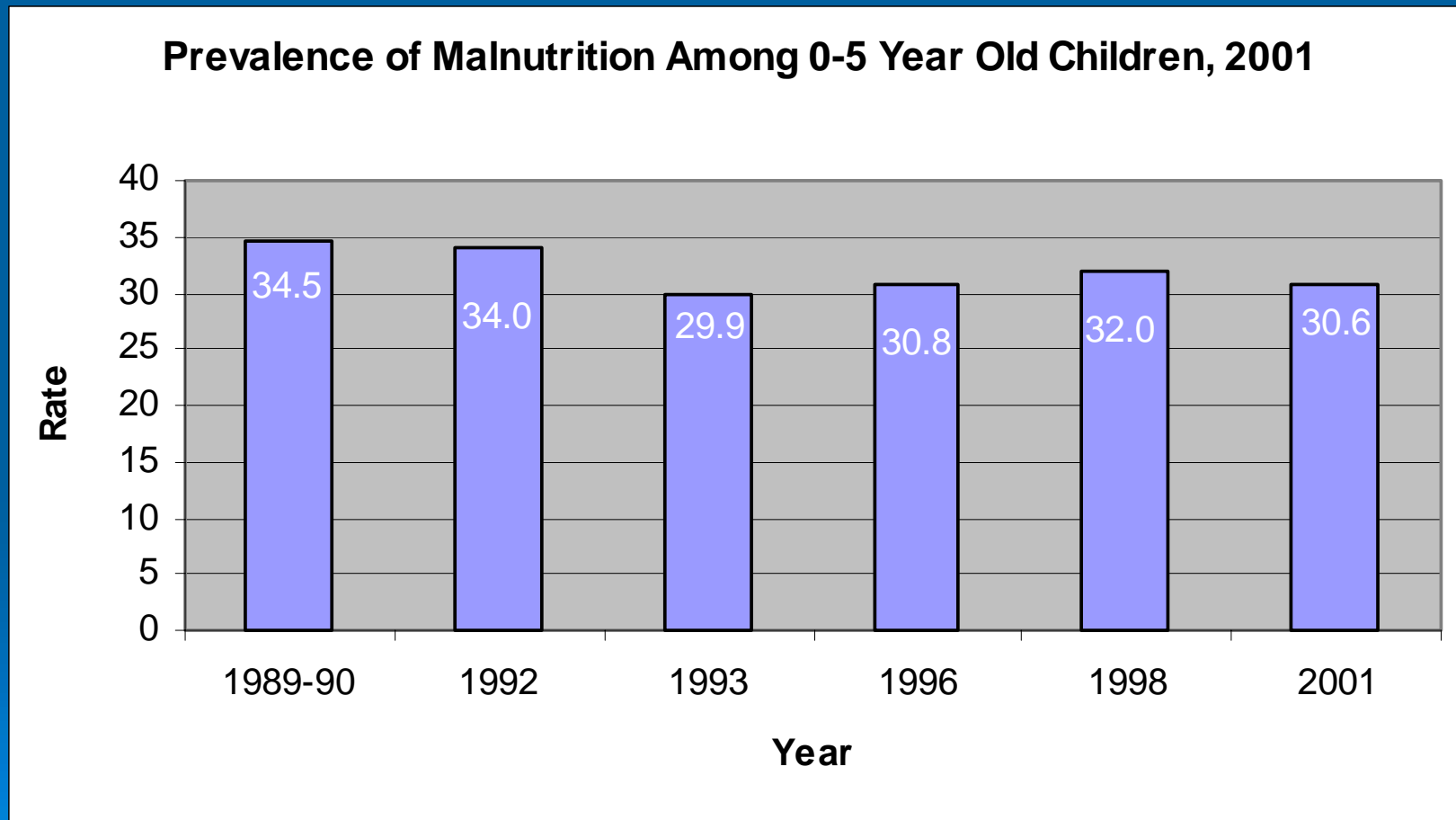
Source of Data: National Statistics Office and Department of Education

Elementary and Secondary School Participation Rates have been increasing over time.



Source of Data: Department of Education

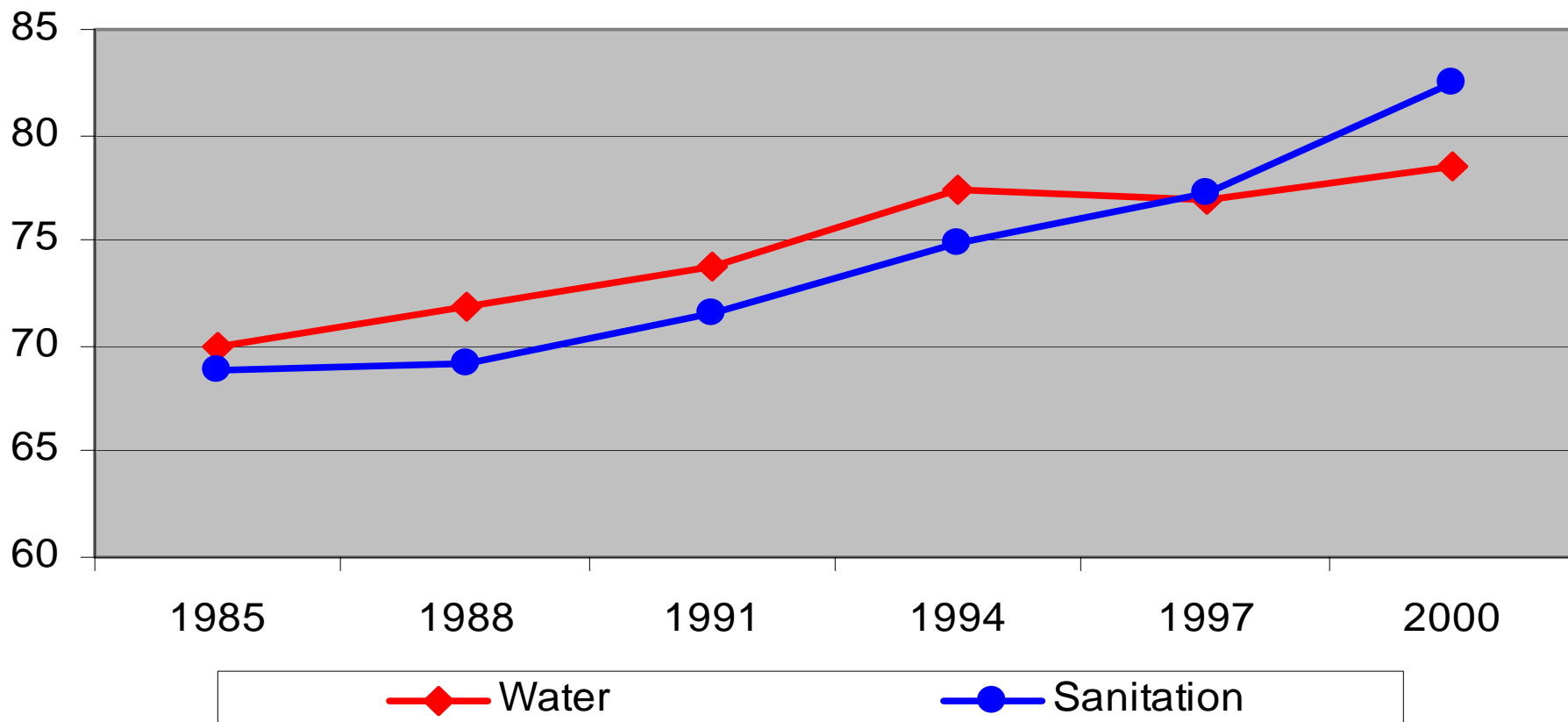
Prevalence of malnutrition among 0-5 year old children is fluctuating over the years.



Source of Data: Food and Nutrition Research Institute

Access to safe water and sanitary toilet facilities are increasing through the years.

Proportion of Families with Access to Safe Water and Sanitary Toilet Facilities



Source of Data: Family Income and Expenditures Survey, NSO

The Philippines, like the other countries, have experienced improvements in human development as measured by the human development index (HDI) .

Human Development Index Trends

Country	Year					
	1975	1980	1985	1990	1995	2000
Philippines	0.652	0.684	0.688	0.716	0.733	0.754
Malaysia	0.616	0.659	0.693	0.722	0.76	0.782
Thailand	0.604	0.645	0.676	0.713	0.749	0.762
Indonesia	0.469	0.53	0.582	0.623	0.664	0.684
Vietnam	.	.	0.583	0.605	0.649	0.688

Source of data: Human Development Indicators, HDR 2002

Poverty reduction strategy and policy

1. Asset reform
2. Human development services
3. Employment and livelihood
4. Participation in governance of basic sectors
5. Social protection and security against violence.


Poverty Programs

- Ramos administration – Social Reform Agenda
- Estrada administration – Lingap para sa mahirap program
- Arroyo administration – Kalahi and Kalahi-CIDSS Programs

Analysis

- Programs tend to be identified with a specific administration and therefore, tend to be coterminous with the administration that initiated it.
 - ✓ The practice of discontinuing programs associated with previous administrations has been disadvantageous to the poor.
 - ✓ Short lifespan of the different poverty reduction programs has made it difficult to realize the full impact of these programs.

Poverty monitoring systems in the Philippines

- Data for the different dimensions of poverty can be obtained from censuses, surveys, and administrative records of government agencies.
 - Aside from the national monitoring systems, the different government agencies also provide data.
- 

Available Sources of Data	Implementing Agency	Frequency of Collection	Data Obtained
Family Income and Expenditures Survey (FIES)	NSO	Every 3 years	Family income and living expenditures and related information affecting income and expenditure levels and patterns in the Philippines including poverty incidence.
Annual Poverty Indicator Survey (APIS)	NSO	Every year wherein FIES is not conducted	Socio-economic profile of families and other information relating to their living conditions but not poverty incidence
National Nutrition Survey (NNS)	FNRI	Every 5 years	Food situation and nutritional status of the population

Available Sources of Data	Implementing Agency	Frequency of Collection	Data Obtained
Census of Population and Housing (CPH)	NSO	Every 10 years	Size, composition and distribution of population in the Philippines
Functional Literacy, Education and Mass Media Survey (FLEMMS)	NSO	Every 5 years	Number of functionally literate population and their socio-economic characteristics
National Demographic and Health Survey (NDHS)	NSO	Every 5 years	Demographic and maternal and child health issues in the Philippines
Labor Force Survey (LFS)	NSO	Every quarter of the year	Levels and trends of employment, unemployment, and underemployment

State of PMS in the Philippines

- The sampling design of many of these surveys cover estimates of the variables only at the provincial level.
- The collection of data is few and far between, and processing adds a few more years so that its usefulness for policy design diminishes
- To address these statistical gaps, several initiatives have been pilot tested to complement the national poverty monitoring system:
 - ✓ *The implementation of monitoring systems at the local level*

Monitoring system at the community level

Community-Based Monitoring System

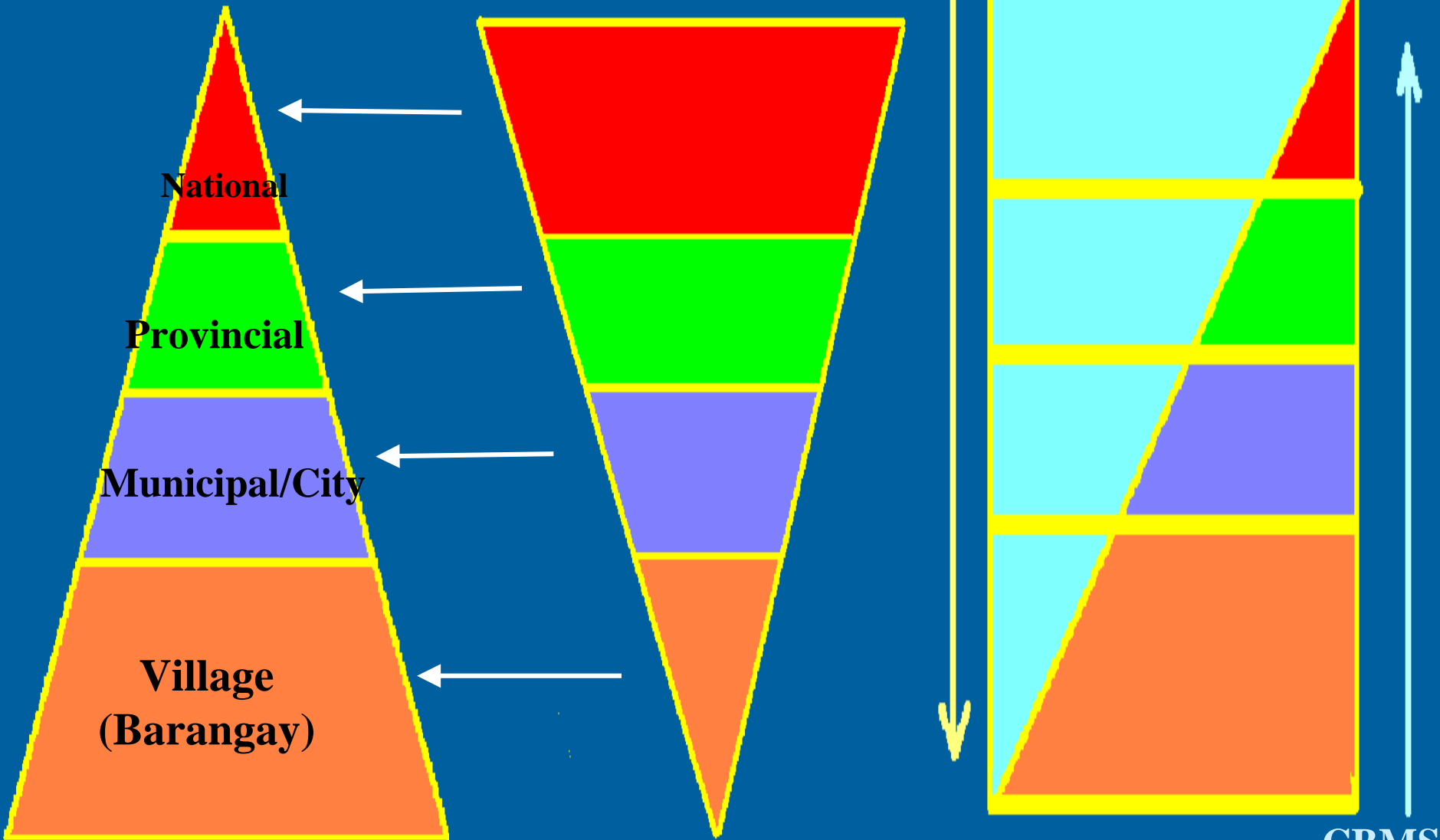
- ✓ *Initiative of the local government units.*
- ✓ *Implemented more frequently than triennial FIES.*
- ✓ *Organized way of collecting information at the local level for use of local government units, national government agencies, non-government organizations, and civil society.*
- ✓ *Builds the capacity of local governments in using poverty statistics as inputs in formulation of development plans and as basis in formulation of poverty reduction programs and projects.*

CBMS can fill the data gaps

Administrative Structure

Information Availability

National surveys



CBMS

Concluding Remarks

- Poverty reduction strategy should be accompanied by a good poverty monitoring systems.
- There is a lack of information to support national and local level poverty reduction efforts.
- Since national agencies cannot provide for all the data requirements of local governments, what should be done is to strengthen the capability of LGUs in diagnosing and monitoring poverty in their localities through CBMS.