

CDF/PRSP Country Progress for Conflict-affected Countries as at July 2001

CDF Post-conflict Countries:

Long-Term Vision and Strategy

- Does the country have a long-term vision/strategy?
- Does it target development results?, e.g., International Development Goals
- Is its content holistic and balanced and well-sequenced, e.g. linking medium- and long-term?
- Is the medium-term strategy consistent with the vision and the expenditure framework?

Enhancing Country Ownership

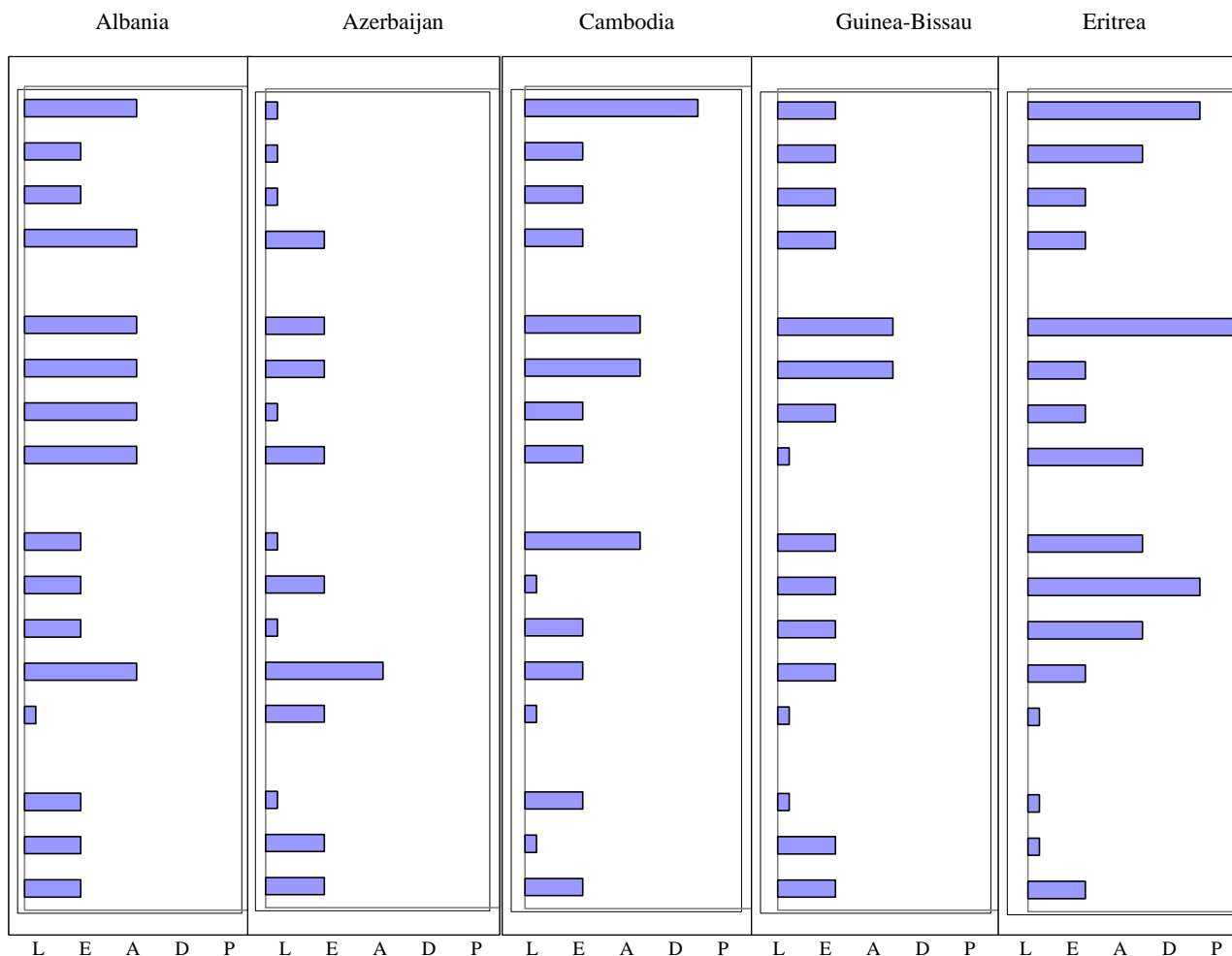
- Does the vision/strategy originate within the country?
- Has the Government involved all stakeholders?, e.g. private sector, NGOs, trade unions, etc.
- Have national institutions played a role in the strategy formulation process? e.g. Parliaments
- Does the Government have capacity to formulate and implement strategy and policy?

Partnership Among Stakeholders

- Are there effective in-country fora for partner coordination?
- Does Government lead the coordination of development partners?
- Is partners' assistance aligned with the country's strategy? e.g. CAS, analytical work, etc.
- Are partners being selective, or taking steps to reduce duplication?
- Are partners' operational policies and procedures harmonized?

Focus on Development Results

- Does the Government have an adequate development coordination information system?
- Is development information accessible to stakeholders?, e.g. media, website, etc.
- Is the Government putting mechanisms in place to track development results?



"L" means "Little or No Action" -- due to a wide variety of circumstances, including political developments, capacity limitations or unforeseen events, action has remained at a virtual standstill.

"E" means "Elements Exist or Being Considered" -- there is some basis for making progress, either through what already exists, or definite plans.

"A" means "Action Has Been or Being Taken" -- progress has or is being made, although not yet enough, and the basis exists for even more substantive progress.

"D" means "Largely Developed" -- significant action has been taken already, although some further action is needed.

"P" means "Substantially in Place" -- the activity is virtually accomplished.

CDF/PRSP Country Progress for Conflict-affected Countries as at July 2001

Low Income Countries:

Long-Term Vision and Strategy

- Does the country have a long-term vision/strategy?
- Does it target development results?, e.g., International Development Goals
- Is its content holistic and balanced and well-sequenced, e.g. linking medium- and long-term?
- Is the medium-term strategy consistent with the vision and the expenditure framework?

Enhancing Country Ownership

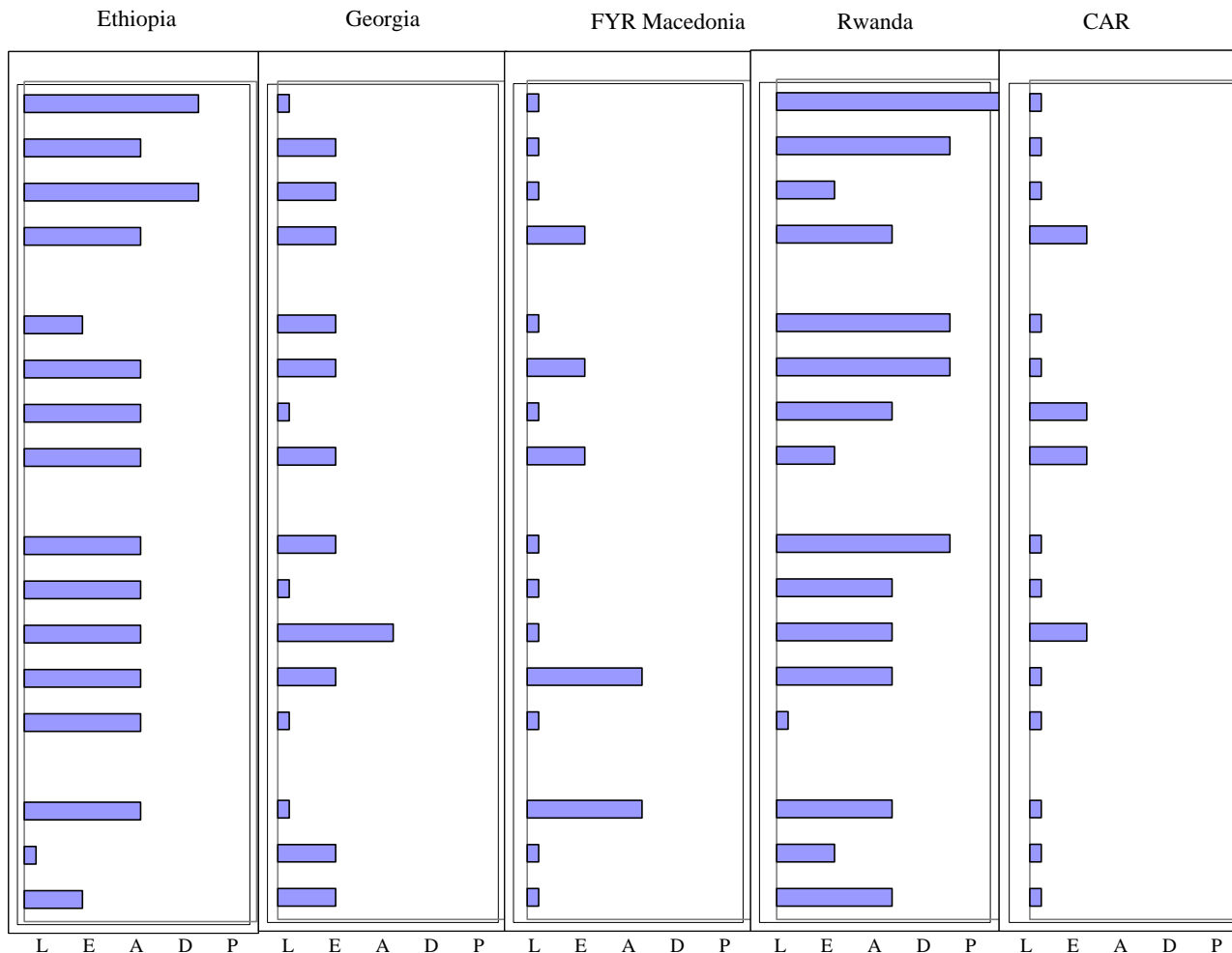
- Does the vision/strategy originate within the country?
- Has the Government involved all stakeholders?, e.g. private sector, NGOs, trade unions, etc.
- Have national institutions played a role in the strategy formulation process? e.g. Parliaments
- Does the Government have capacity to formulate and implement strategy and policy?

Partnership Among Stakeholders

- Are there effective in-country fora for partner coordination?
- Does Government lead the coordination of development partners?
- Is partners' assistance aligned with the country's strategy? e.g. CAS, analytical work, etc.
- Are partners being selective, or taking steps to reduce duplication?
- Are partners' operational policies and procedures harmonized?

Focus on Development Results

- Does the Government have an adequate development coordination information system?
- Is development information accessible to stakeholders?, e.g. media, website, etc.
- Is the Government putting mechanisms in place to track development results?



"L" means "Little or No Action" -- due to a wide variety of circumstances, including political developments, capacity limitations or unforeseen events, action has remained at a virtual standstill.

"E" means "Elements Exist or Being Considered" -- there is some basis for making progress, either through what already exists, or definite plans.

"A" means "Action Has Been or Being Taken" -- progress has or is being made, although not yet enough, and the basis exists for even more substantive progress.

"D" means "Largely Developed" -- significant action has been taken already, although some further action is needed.

"P" means "Substantially in Place" -- the activity is virtually accomplished.

CDF/PRSP Country Progress for Conflict-affected Countries as at July 2001

Low-Income Countries:

Long-Term Vision and Strategy

- Does the country have a long-term vision/strategy?
- Does it target development results?, e.g., International Development Goals
- Is its content holistic and balanced and well-sequenced, e.g. linking medium- and long-term?
- Is the medium-term strategy consistent with the vision and the expenditure framework?

Enhancing Country Ownership

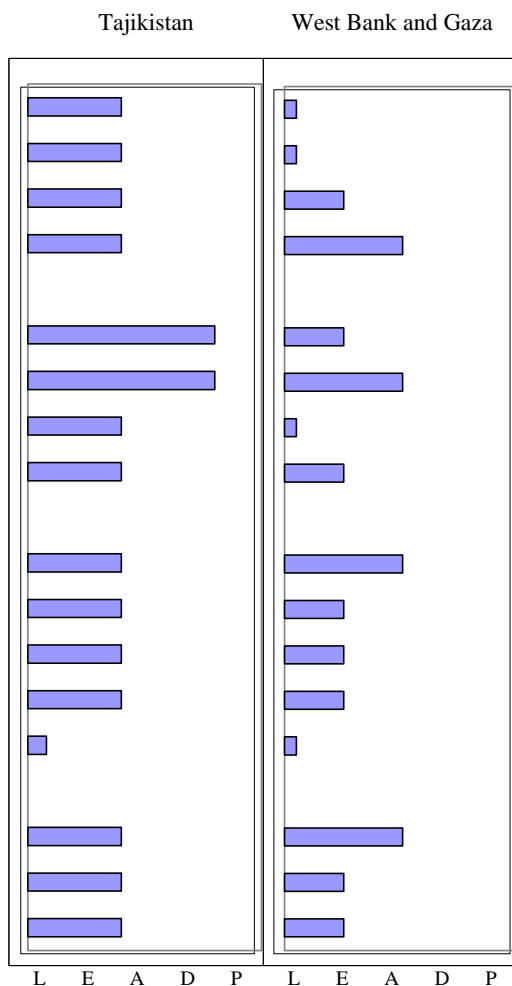
- Does the vision/strategy originate within the country?
- Has the Government involved all stakeholders?, e.g. private sector, NGOs, trade unions, etc.
- Have national institutions played a role in the strategy formulation process? e.g. Parliaments
- Does the Government have capacity to formulate and implement strategy and policy?

Partnership Among Stakeholders

- Are there effective in-country fora for partner coordination?
- Does Government lead the coordination of development partners?
- Is partners' assistance aligned with the country's strategy? e.g. CAS, analytical work, etc.
- Are partners being selective, or taking steps to reduce duplication?
- Are partners' operational policies and procedures harmonized?

Focus on Development Results

- Does the Government have an adequate development coordination information system?
- Is development information accessible to stakeholders?, e.g. media, website, etc.
- Is the Government putting mechanisms in place to track development results?



"L" means "Little or No Action" -- due to a wide variety of circumstances, including political developments, capacity limitations or unforeseen events, action has remained at a virtual standstill.

"E" means "Elements Exist or Being Considered" -- there is some basis for making progress, either through what already exists, or definite plans.

"A" means "Action Has Been or Being Taken" -- progress has or is being made, although not yet enough, and the basis exists for even more substantive progress.

"D" means "Largely Developed" -- significant action has been taken already, although some further action is needed.

"P" means "Substantially in Place" -- the activity is virtually accomplished.