

Freight Railway Operations in Brazil

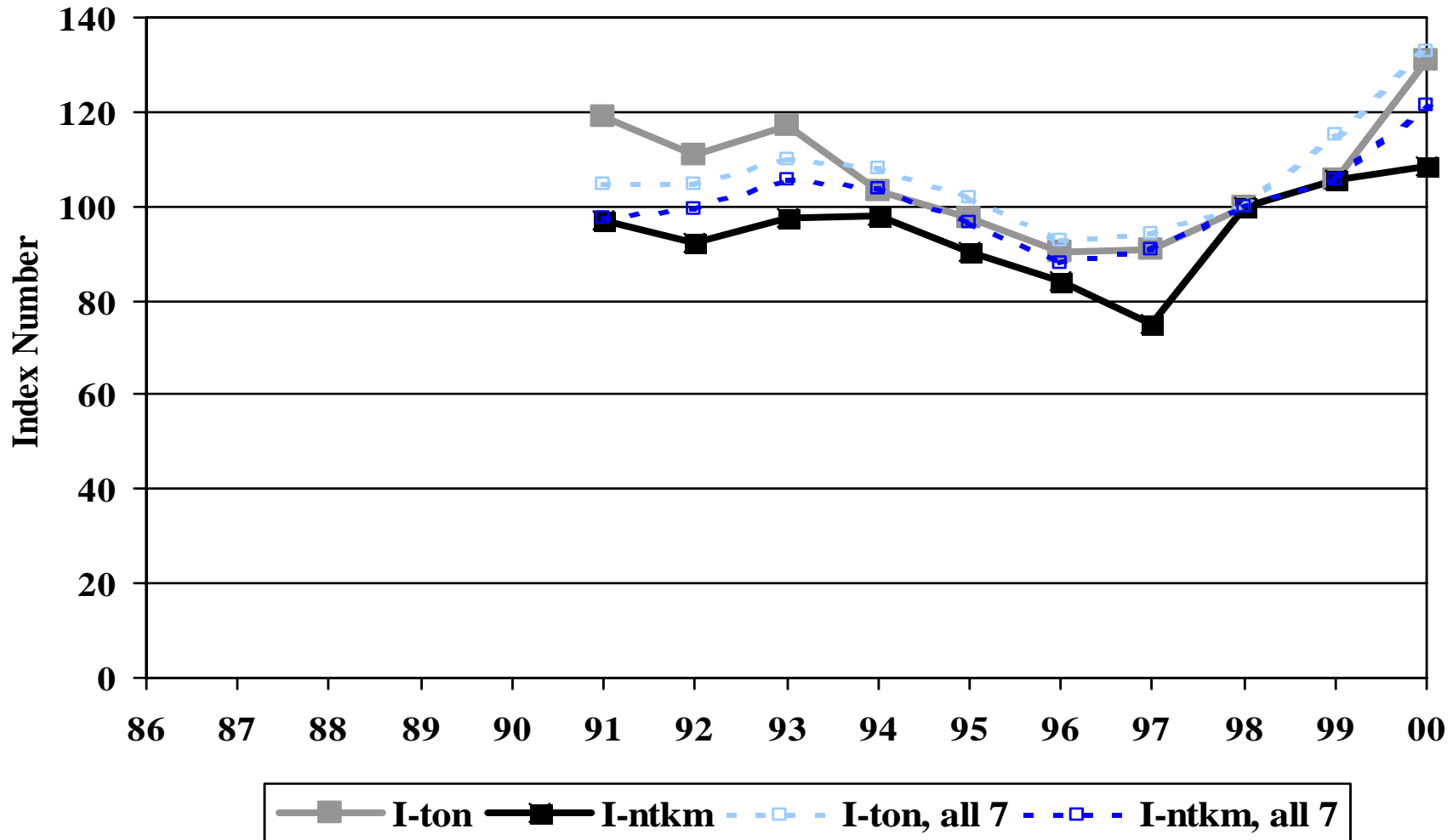
Freight Railway Operations in Brazil

Information is shown for the following railway concessions:

<u>Railway</u>	<u>Date of private operation</u>
Centro-Atlantica	September 1996
Novoeste	July 1996
Nordeste	January 1998
M.R.S. (MRS Logistica)	December 1996
A.L.L. (America Latina Logistica)	March 1997
Tereza Cristina	February 1997
Bandeirantes	January 1999

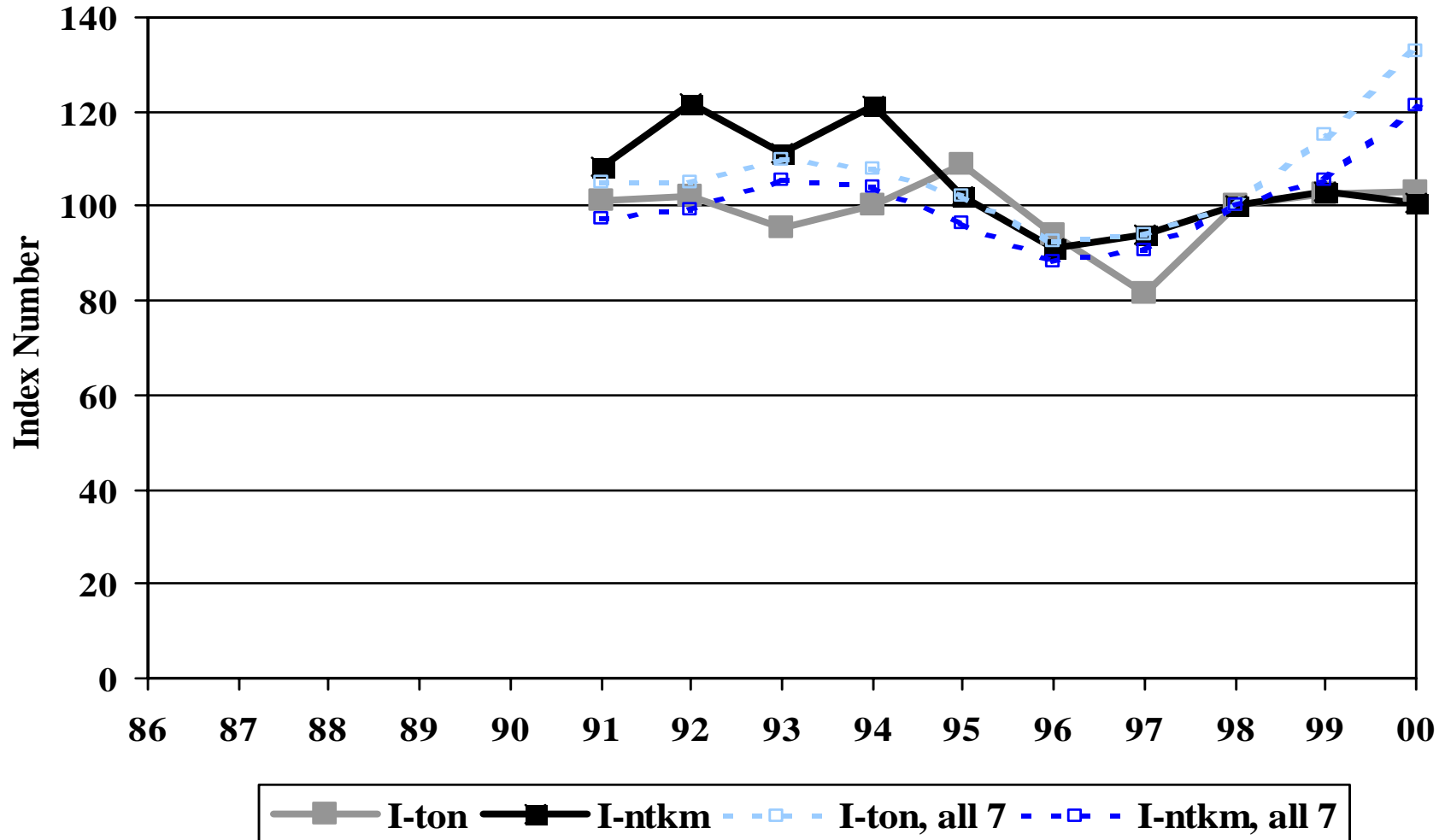
Centro-Atlantica - Output Indices

(1998 = 100)



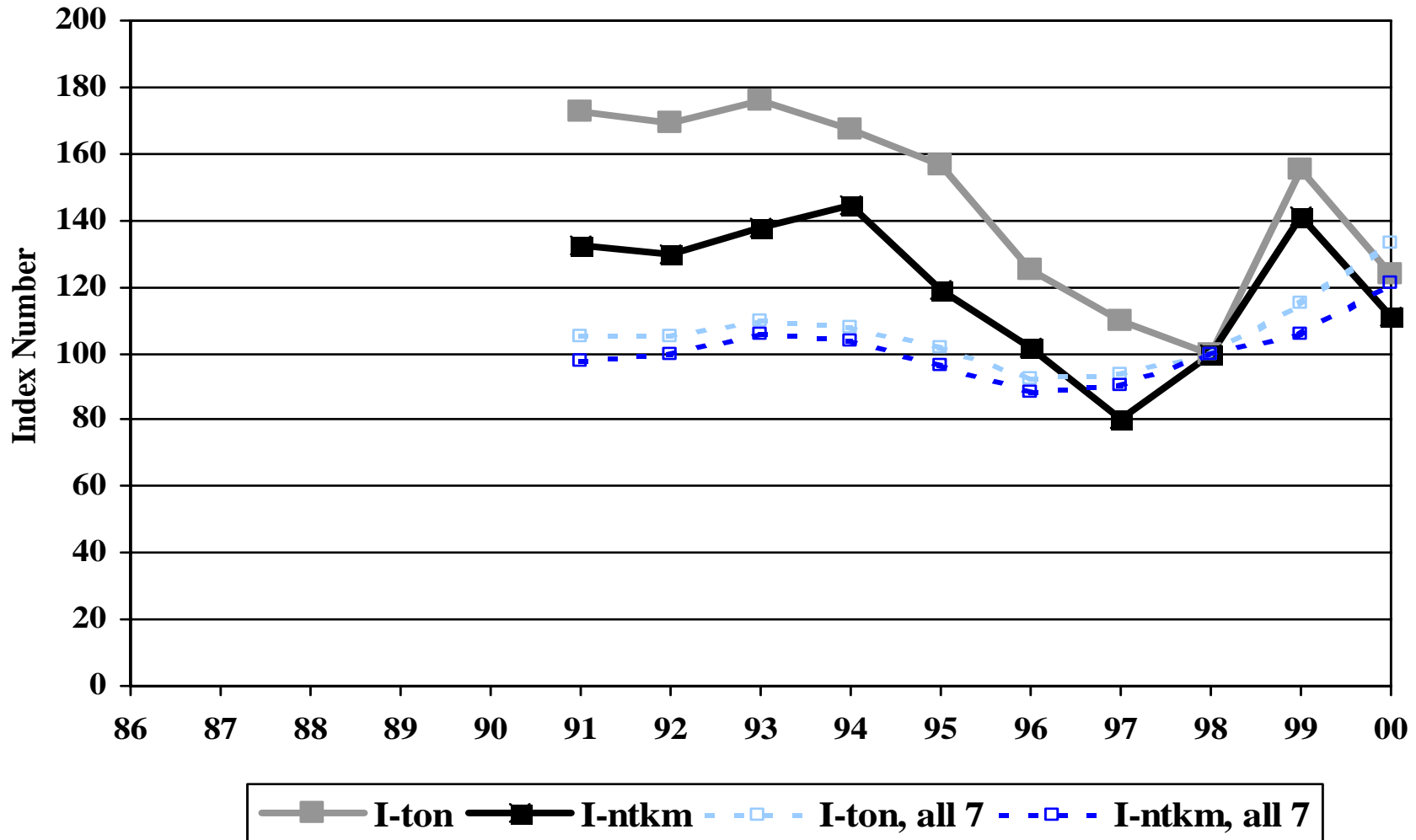
Novoeste - Output Indices

(1998 = 100)



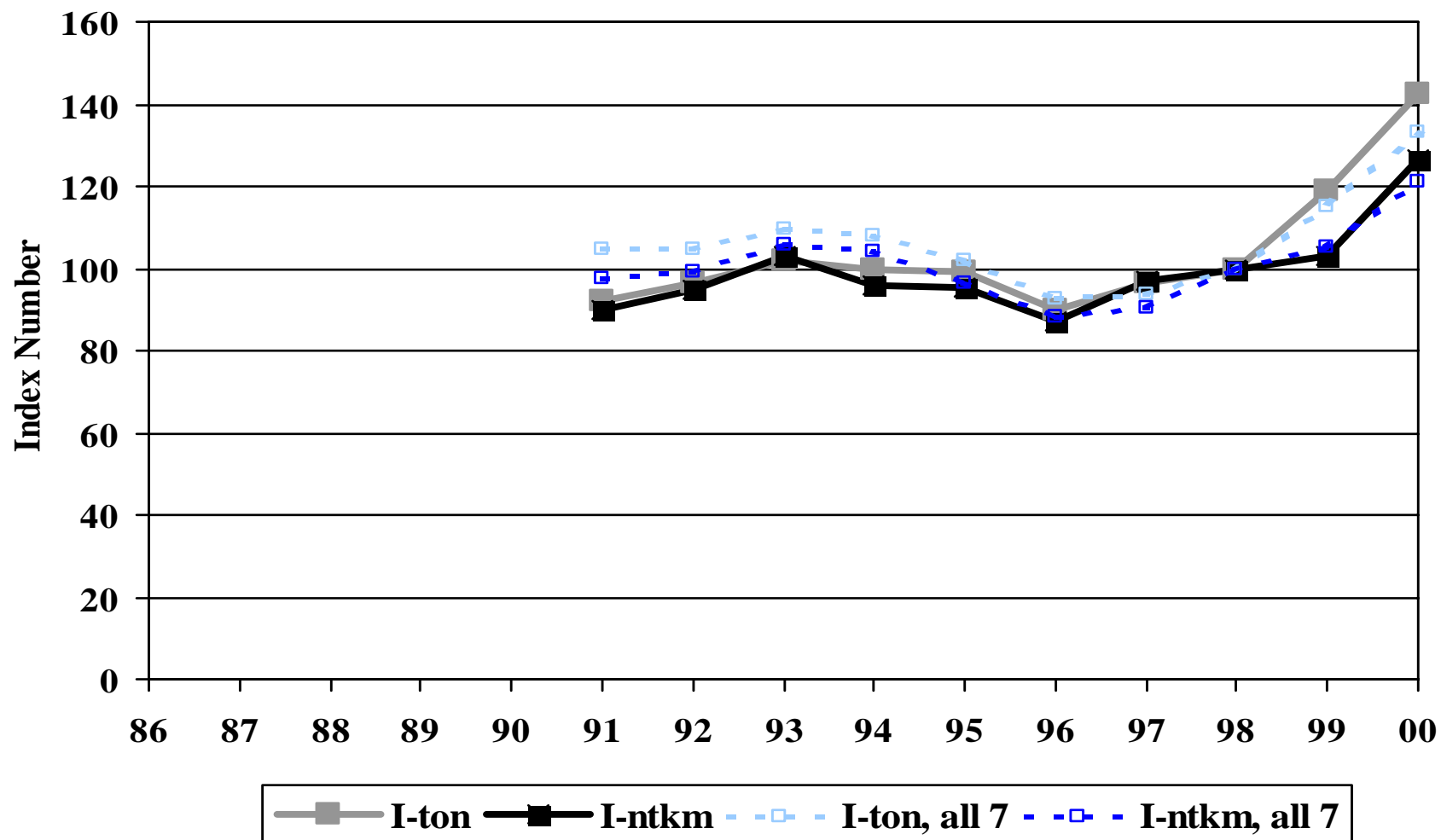
Nordeste - Output Indices

(1998 = 100)



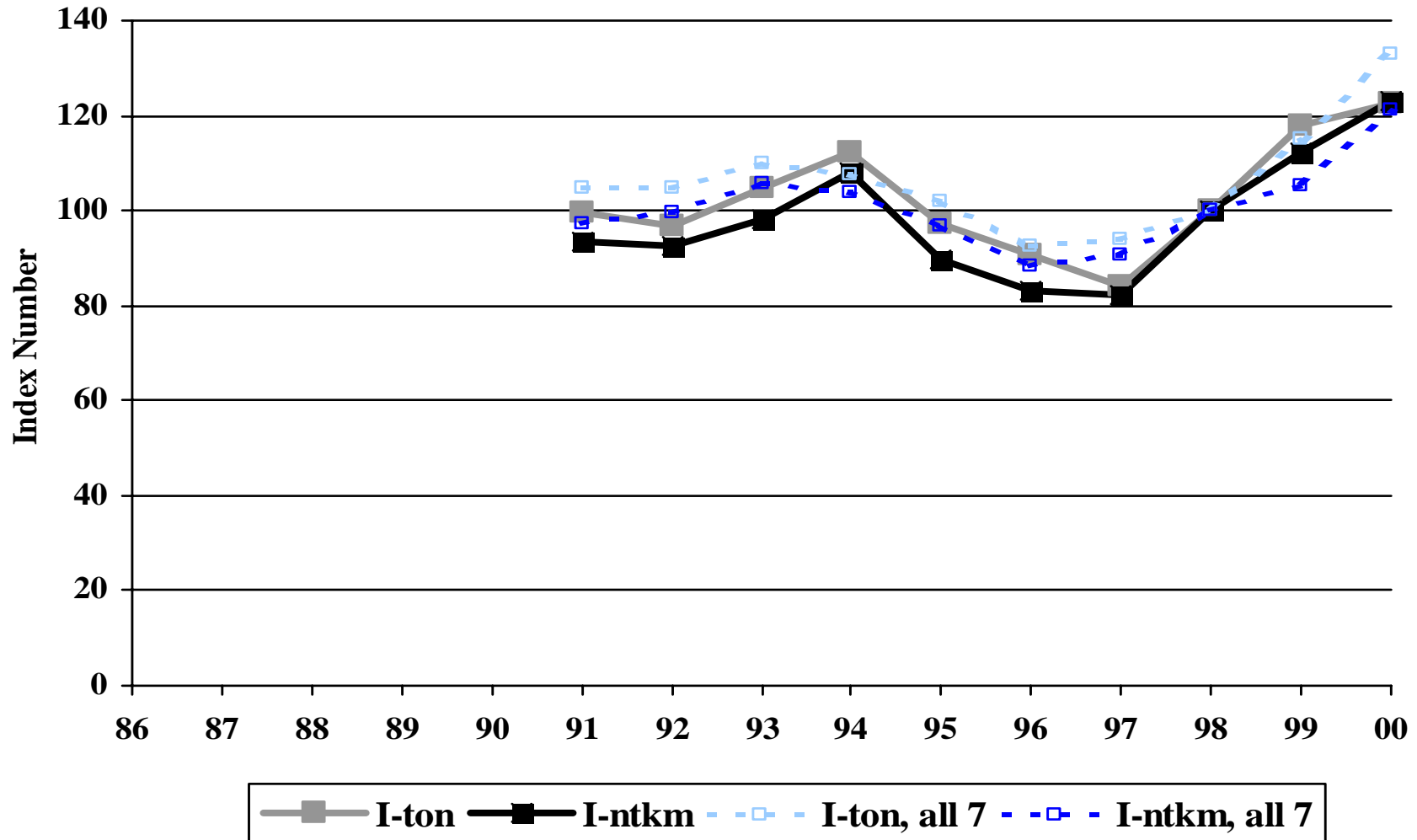
M.R.S. - Output Indices

(1998 = 100)



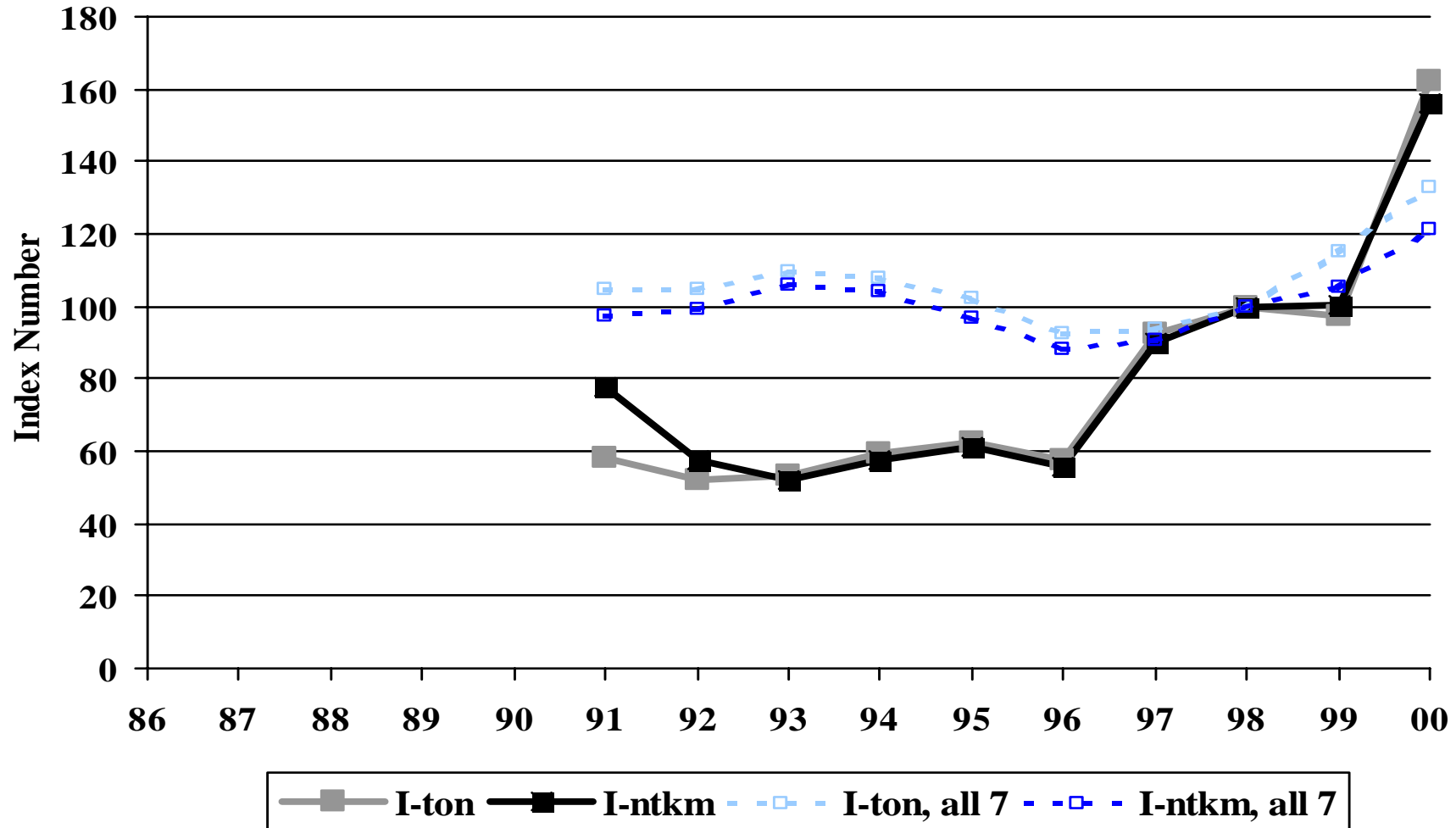
A.L.L. - Output Indices

(1998 = 100)



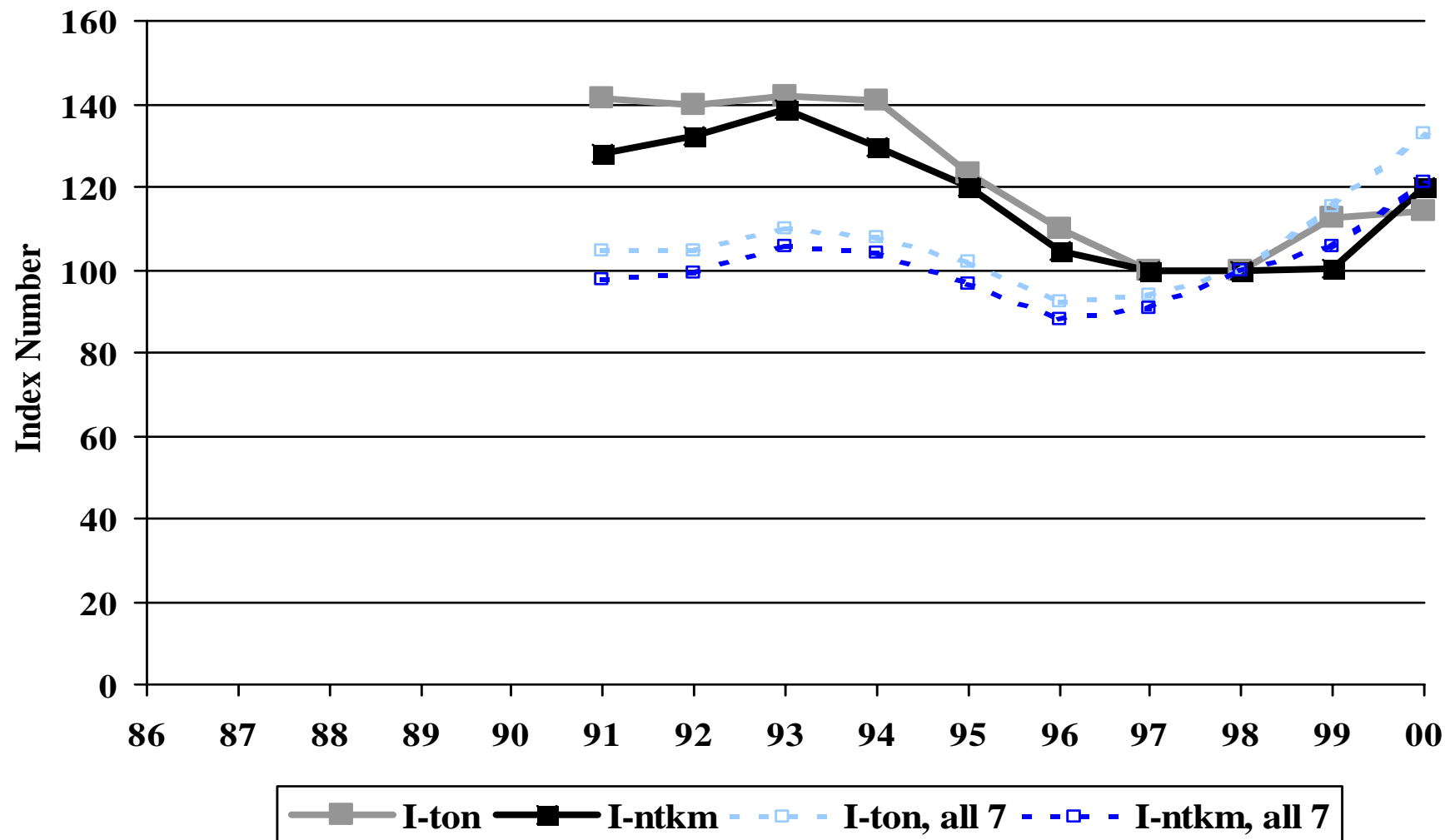
Tereza Cristina - Output Indices

(1998 = 100)



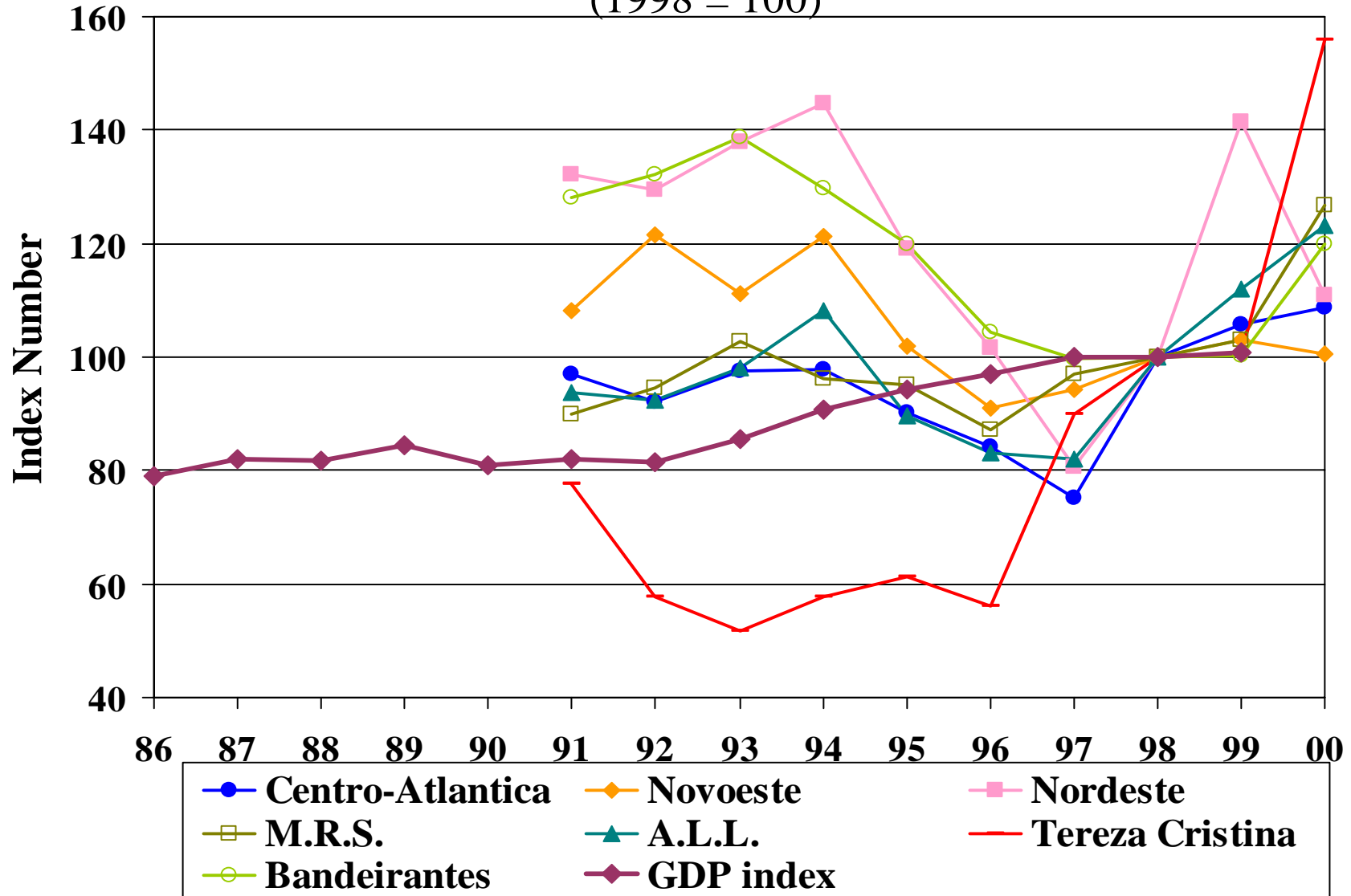
Bandeirantes - Output Indices

(1998 = 100)



Output (ntkm) and GDP

(1998 = 100)



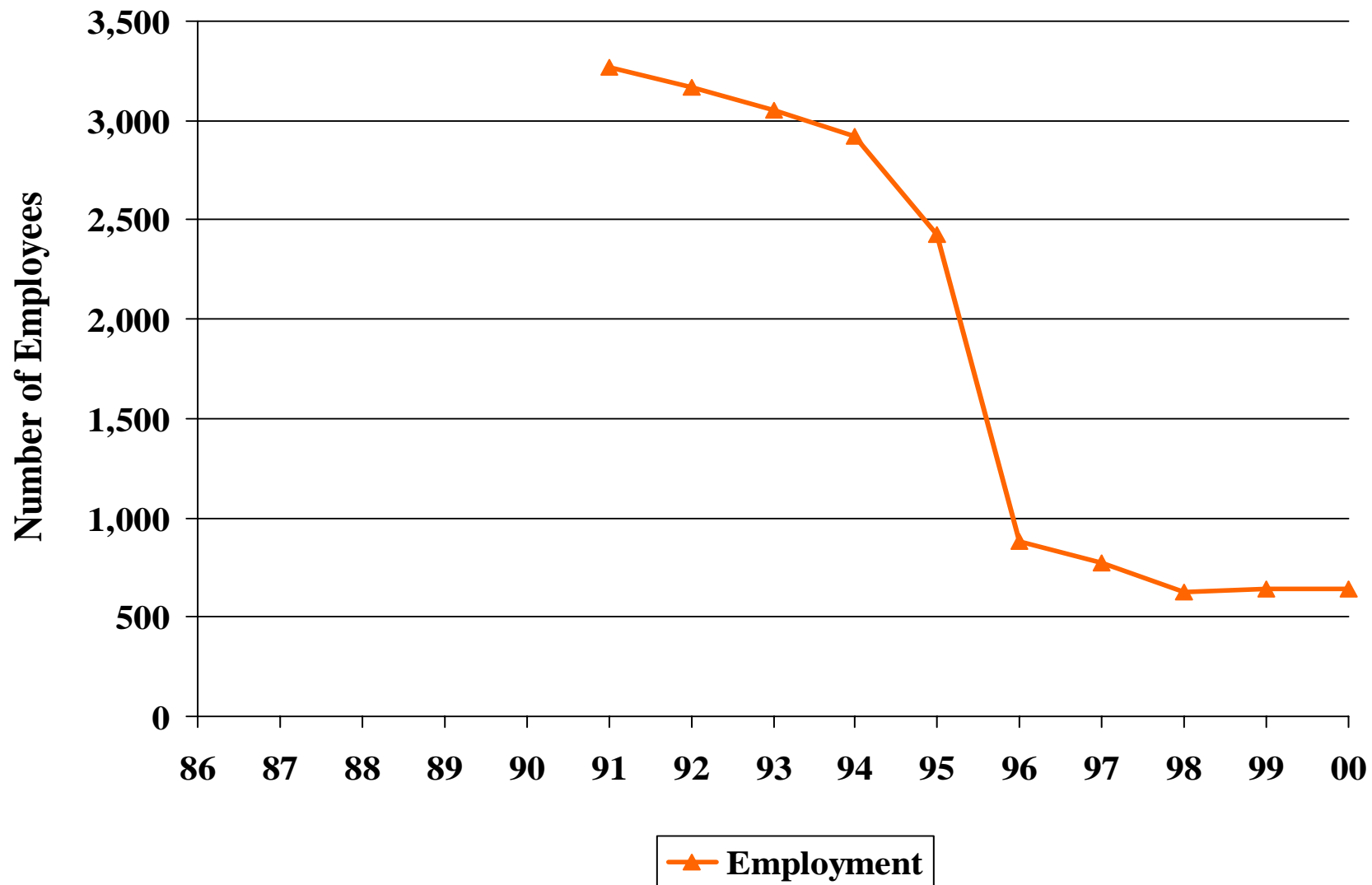
Centro-Atlantica - Employment



Private Railway Operations Database
BRAZIL - Freight

World Bank
Infrastructure and Urban Department

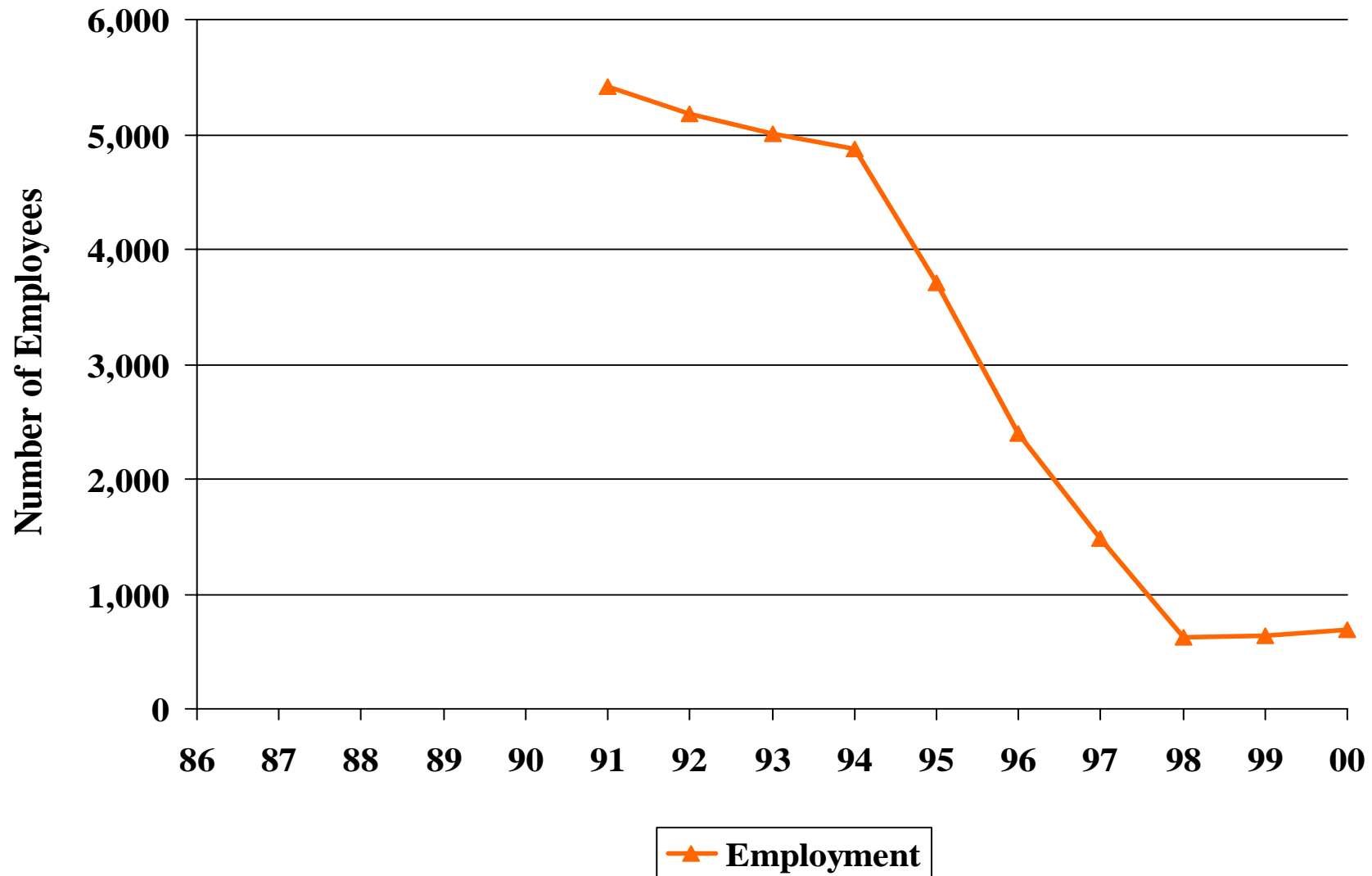
Novoeste - Employment



Private Railway Operations Database
BRAZIL - Freight

World Bank
Infrastructure and Urban Department

Nordeste - Employment



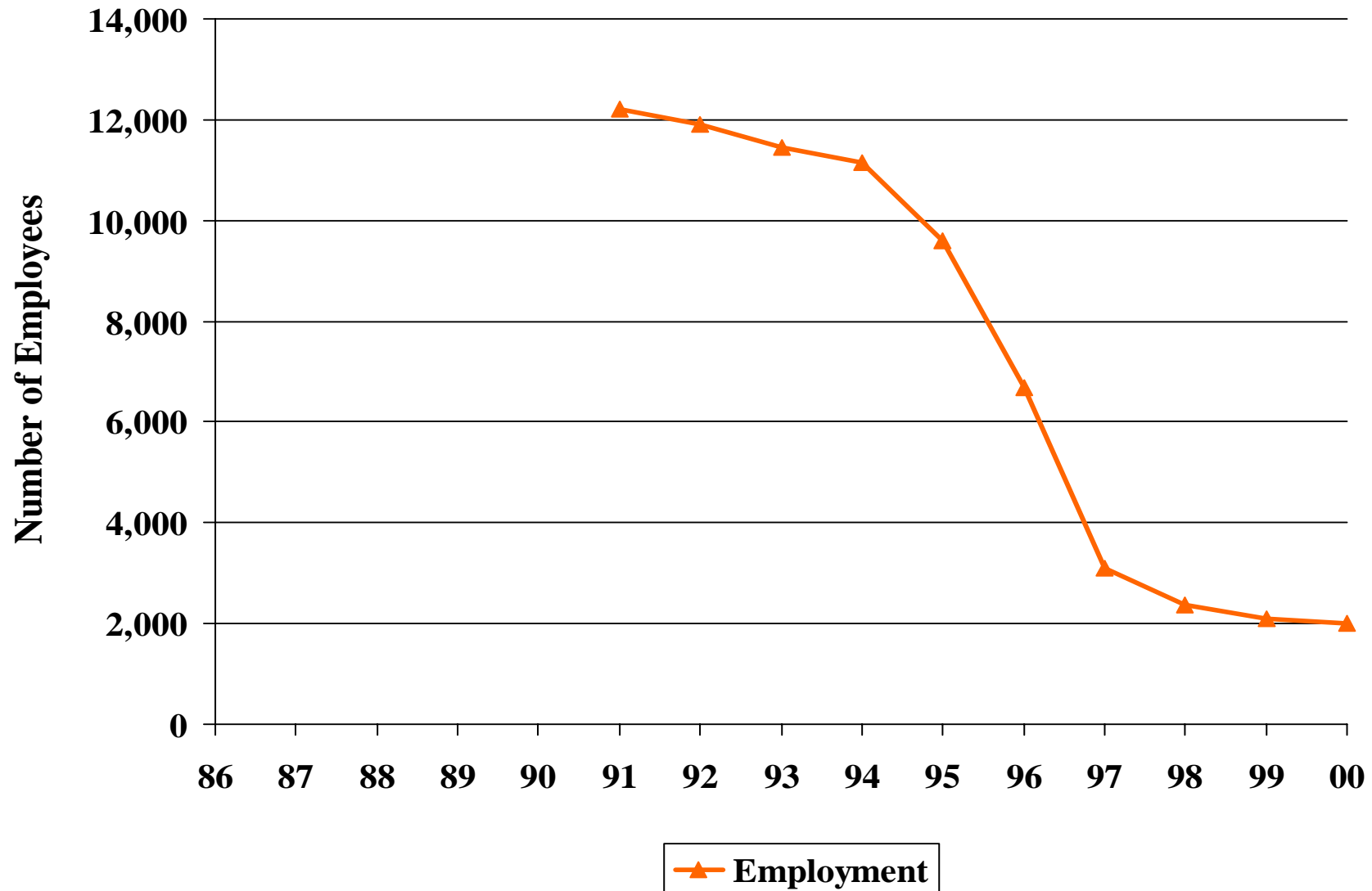
Private Railway Operations Database
BRAZIL - Freight

World Bank
Infrastructure and Urban Department

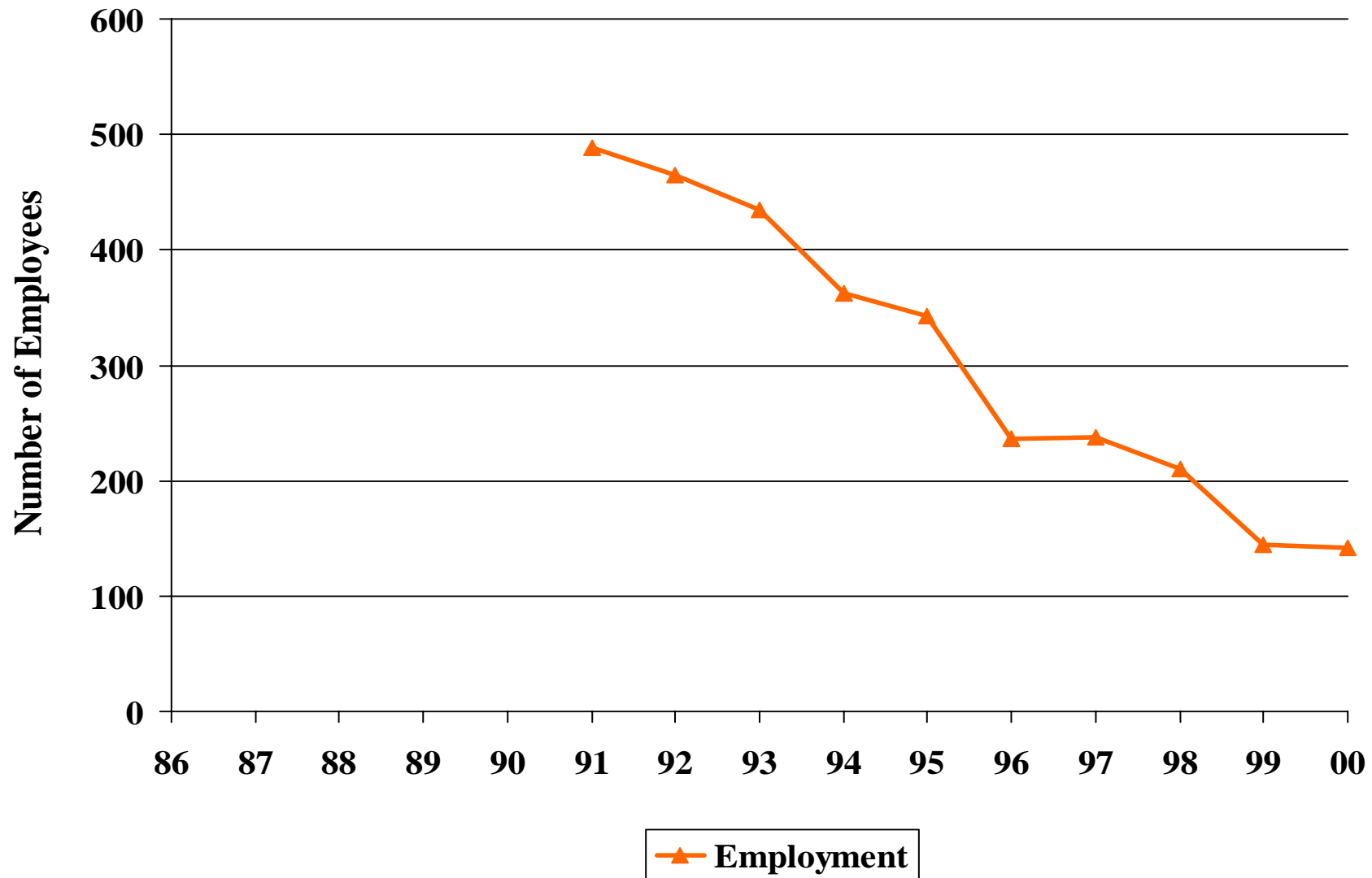
M.R.S. - Employment



A.L.L. - Employment



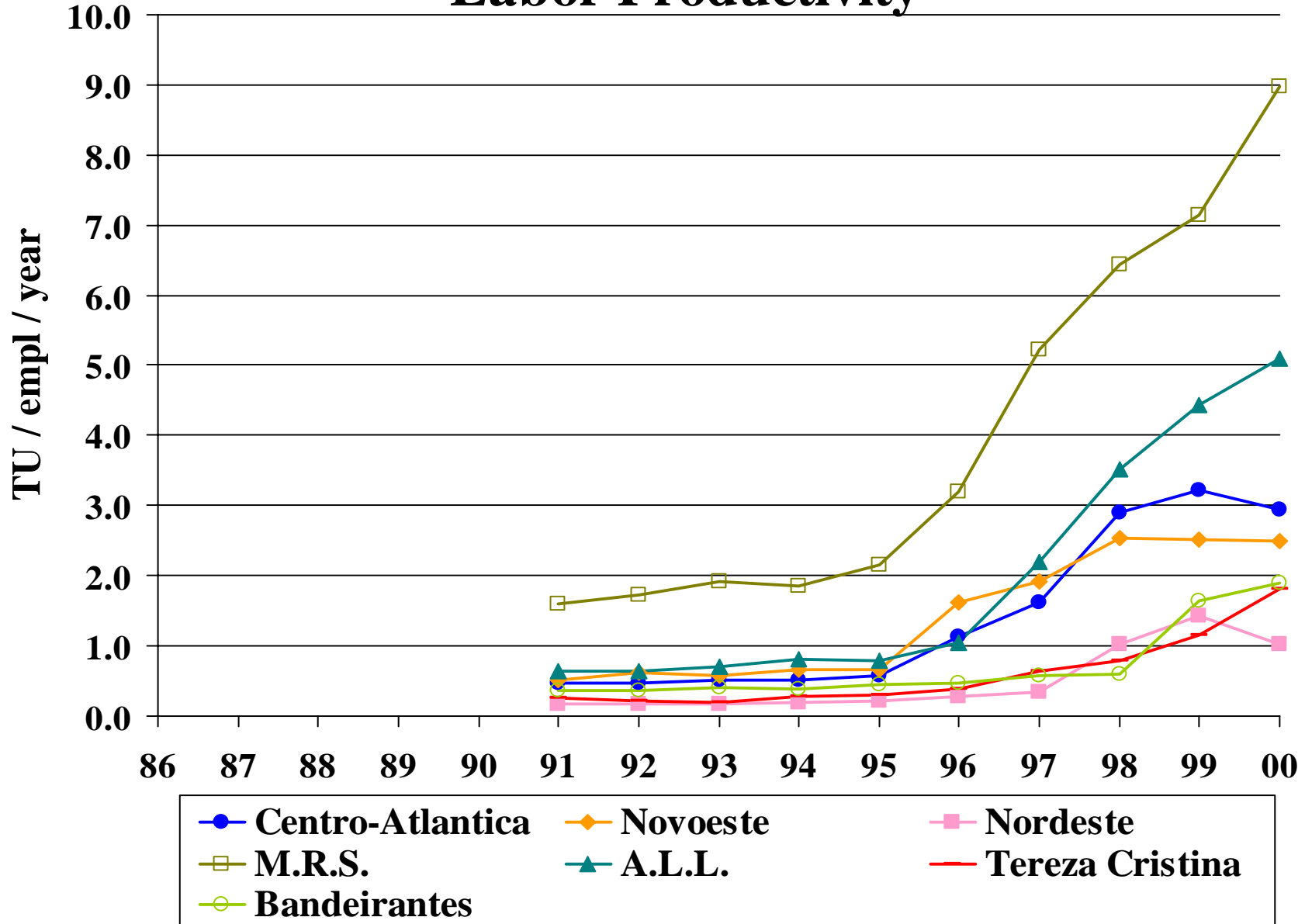
Tereza Cristina - Employment



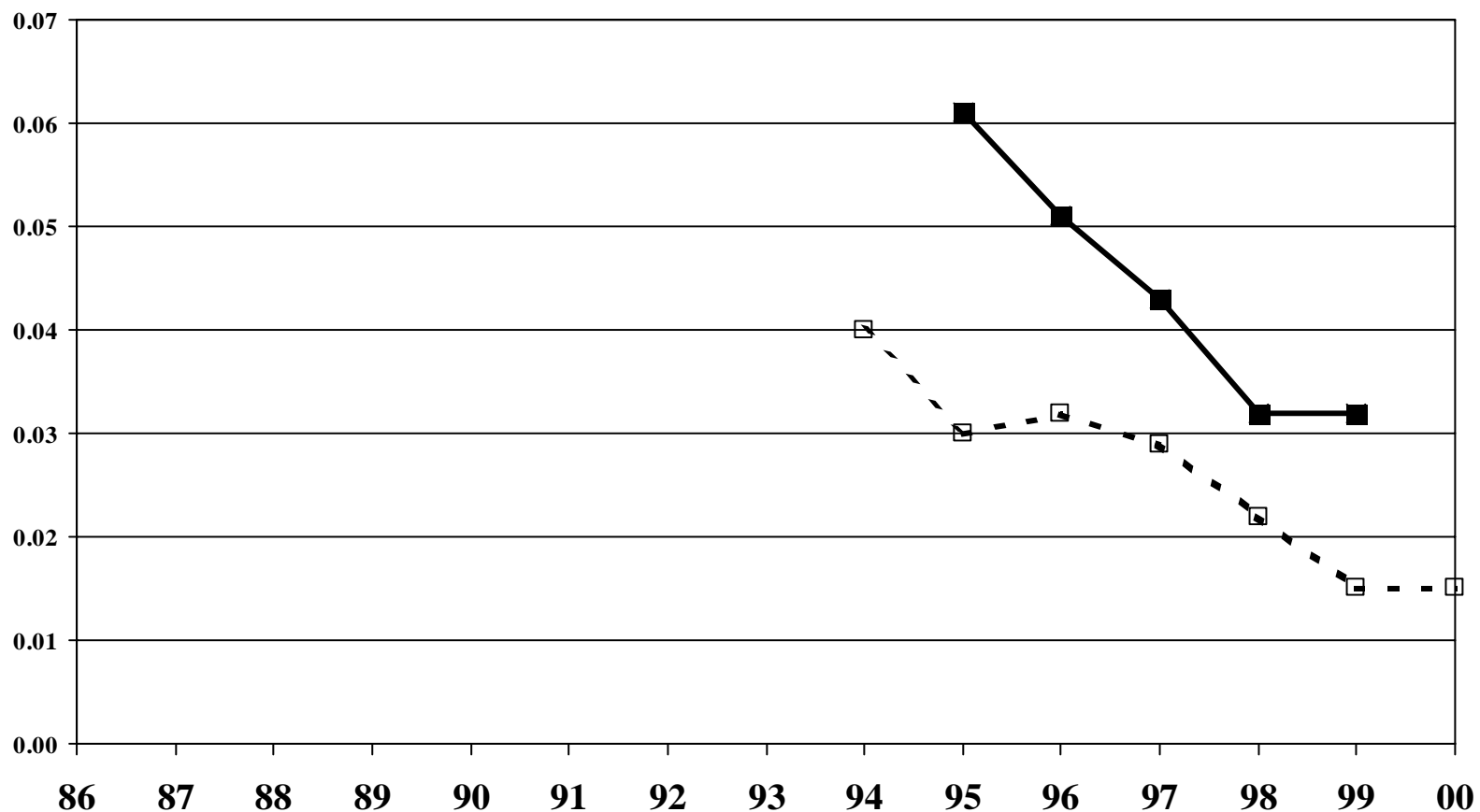
Bandeirantes - Employment



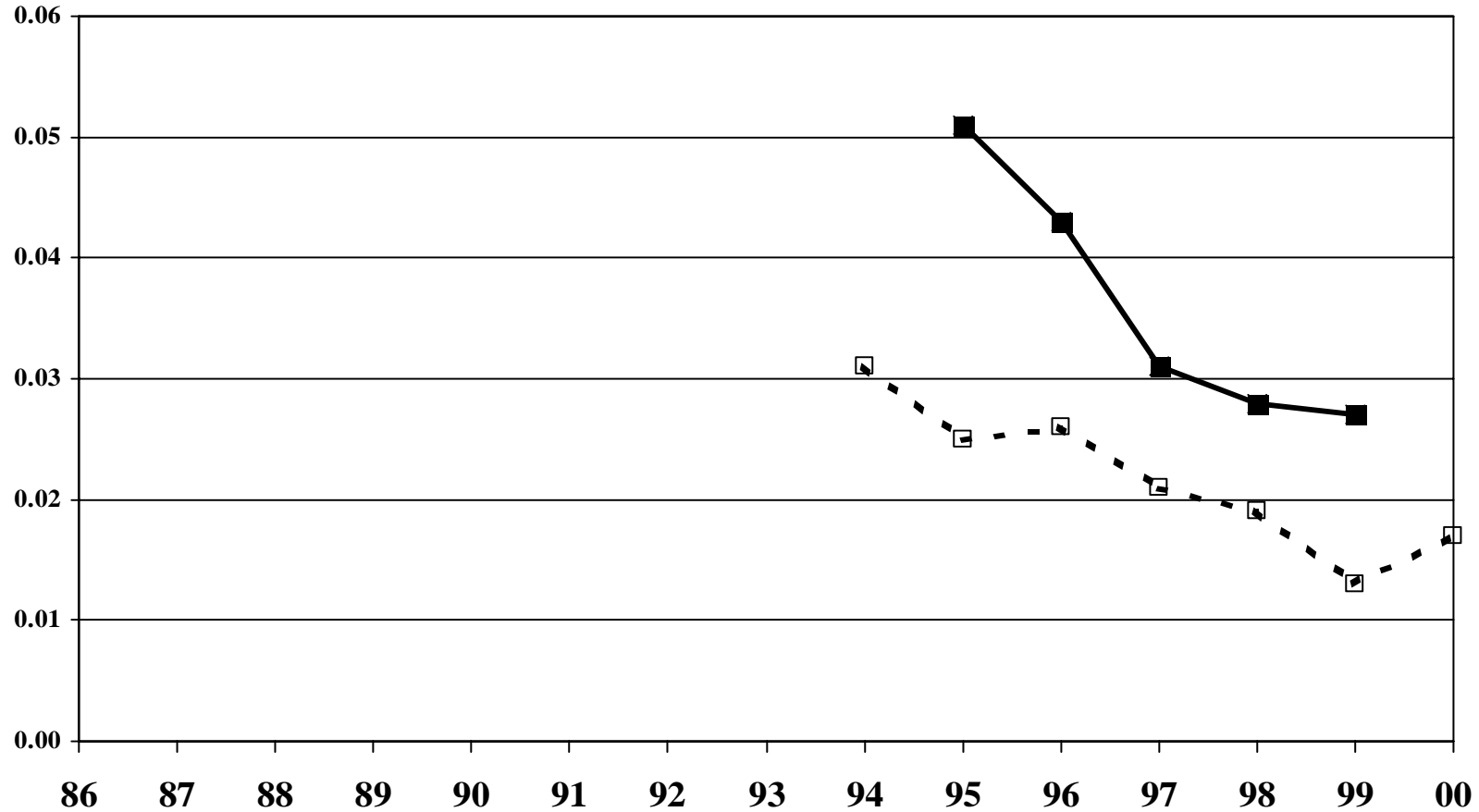
Labor Productivity



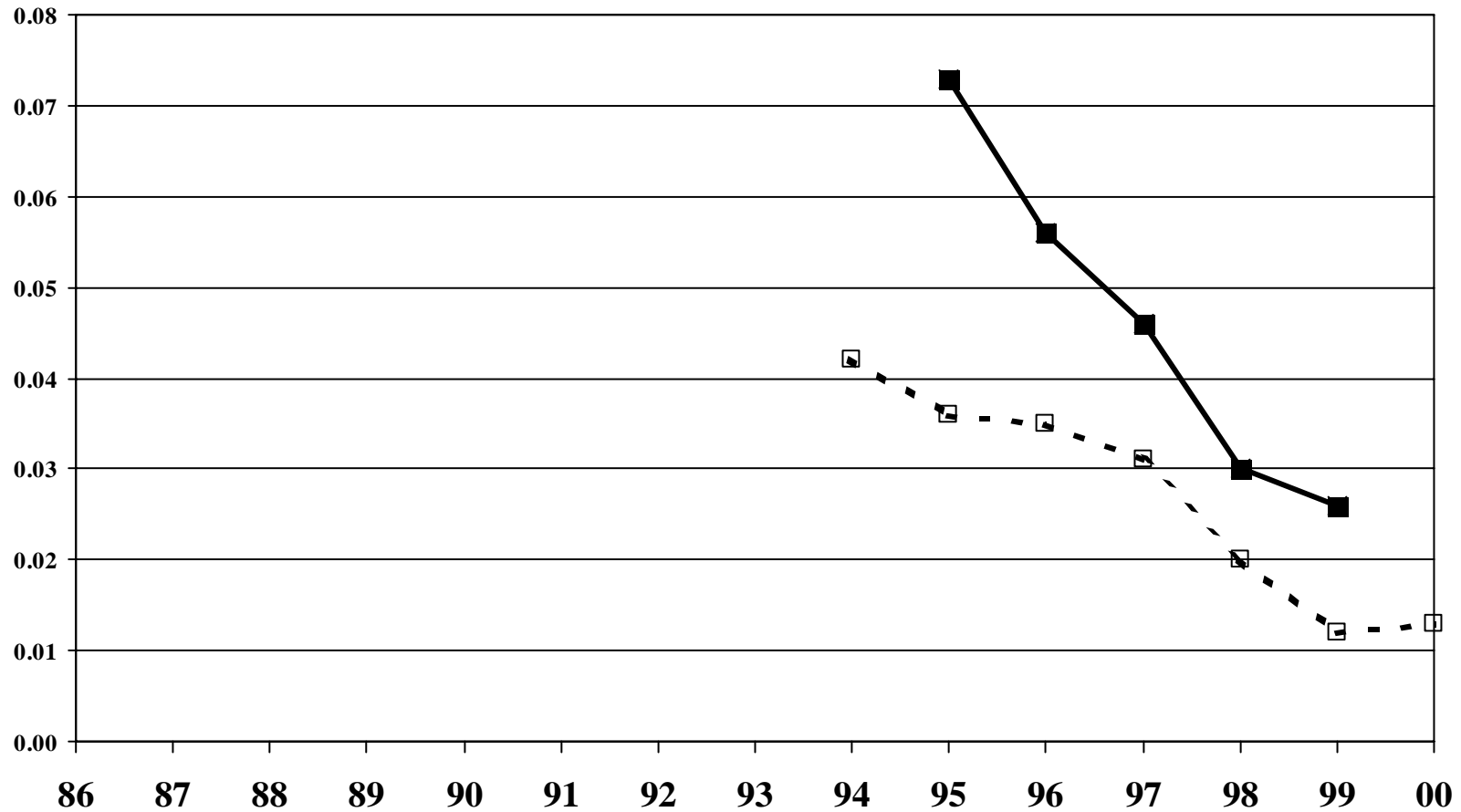
Centro-Atlantica - Price



Novoeste - Price

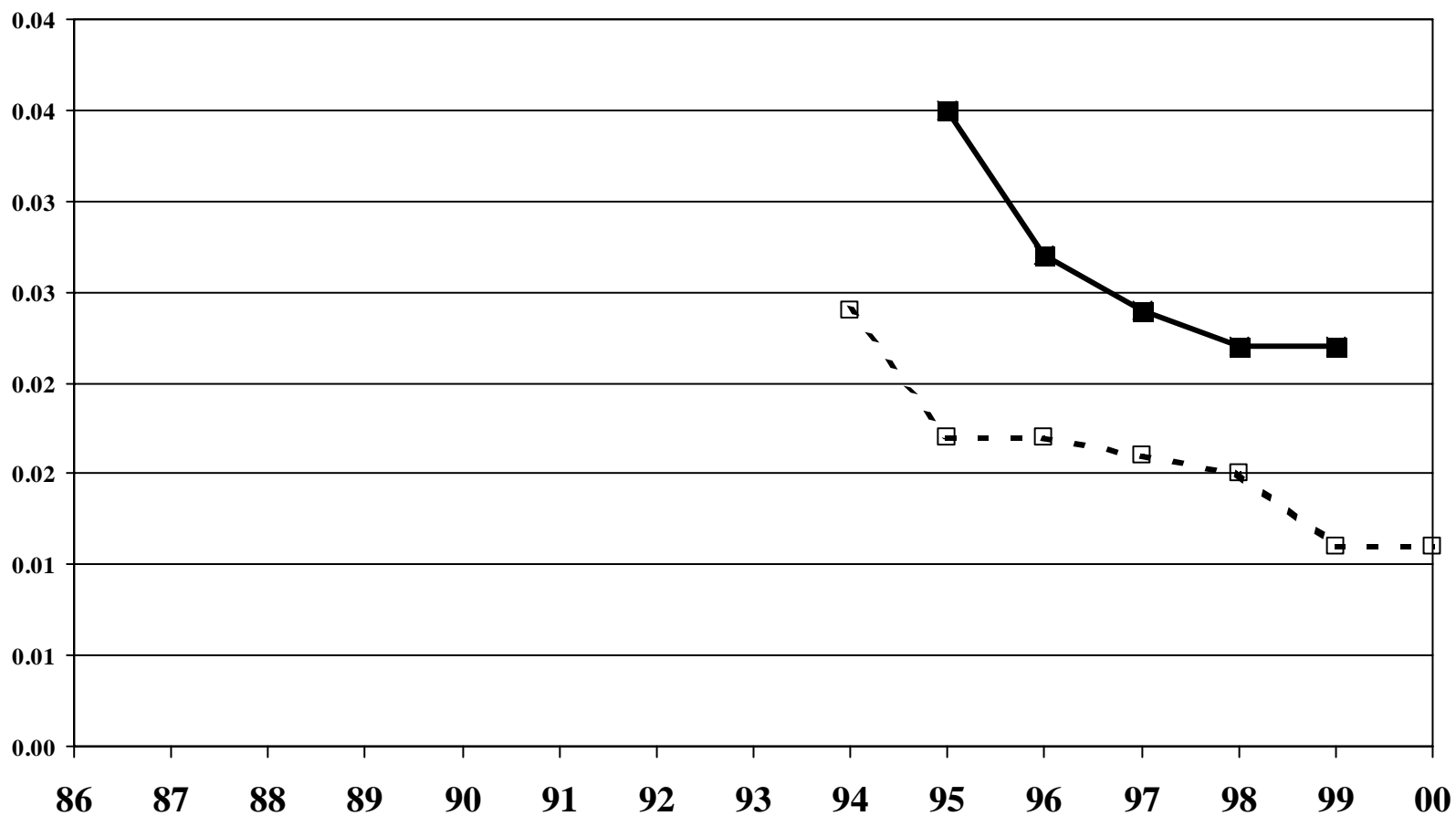


Nordeste - Price

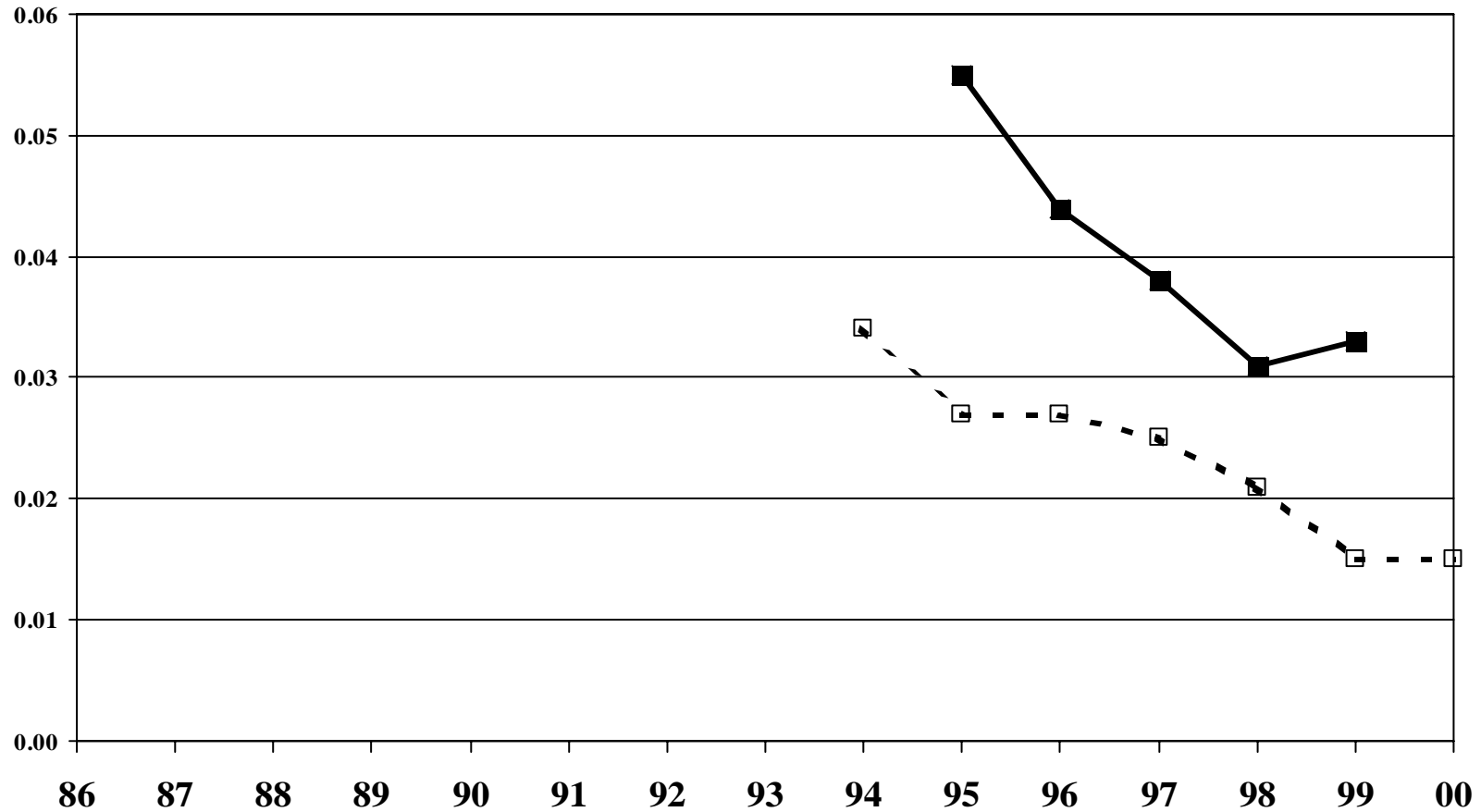


- ▲ - rev/pkm current \$ -▲- rev/pkm constant PPP
- □ - rev/ntkm current \$ -■- rev/ntkm constant PPP

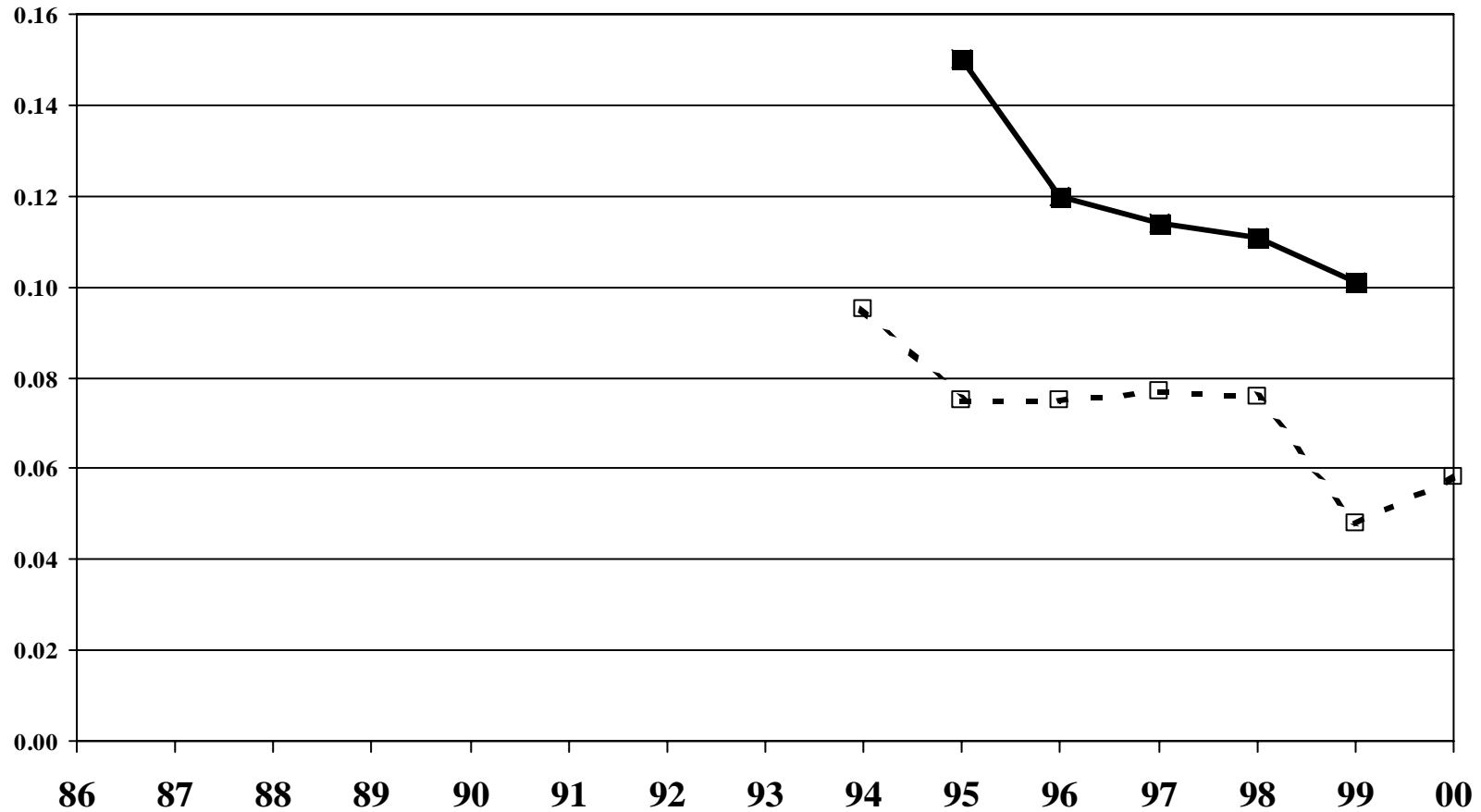
M.R.S. - Price



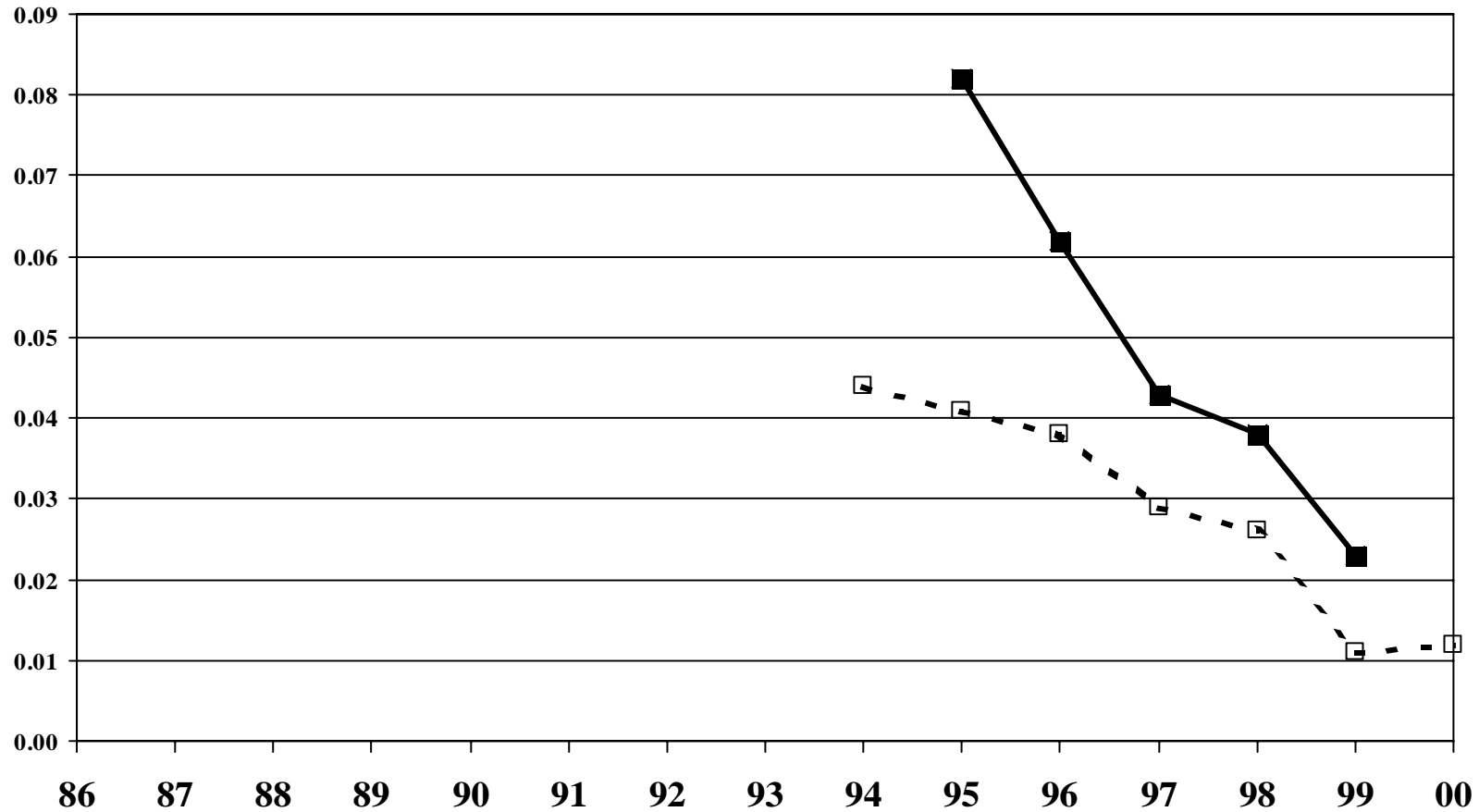
A.L.L. - Price



Tereza Cristina - Price

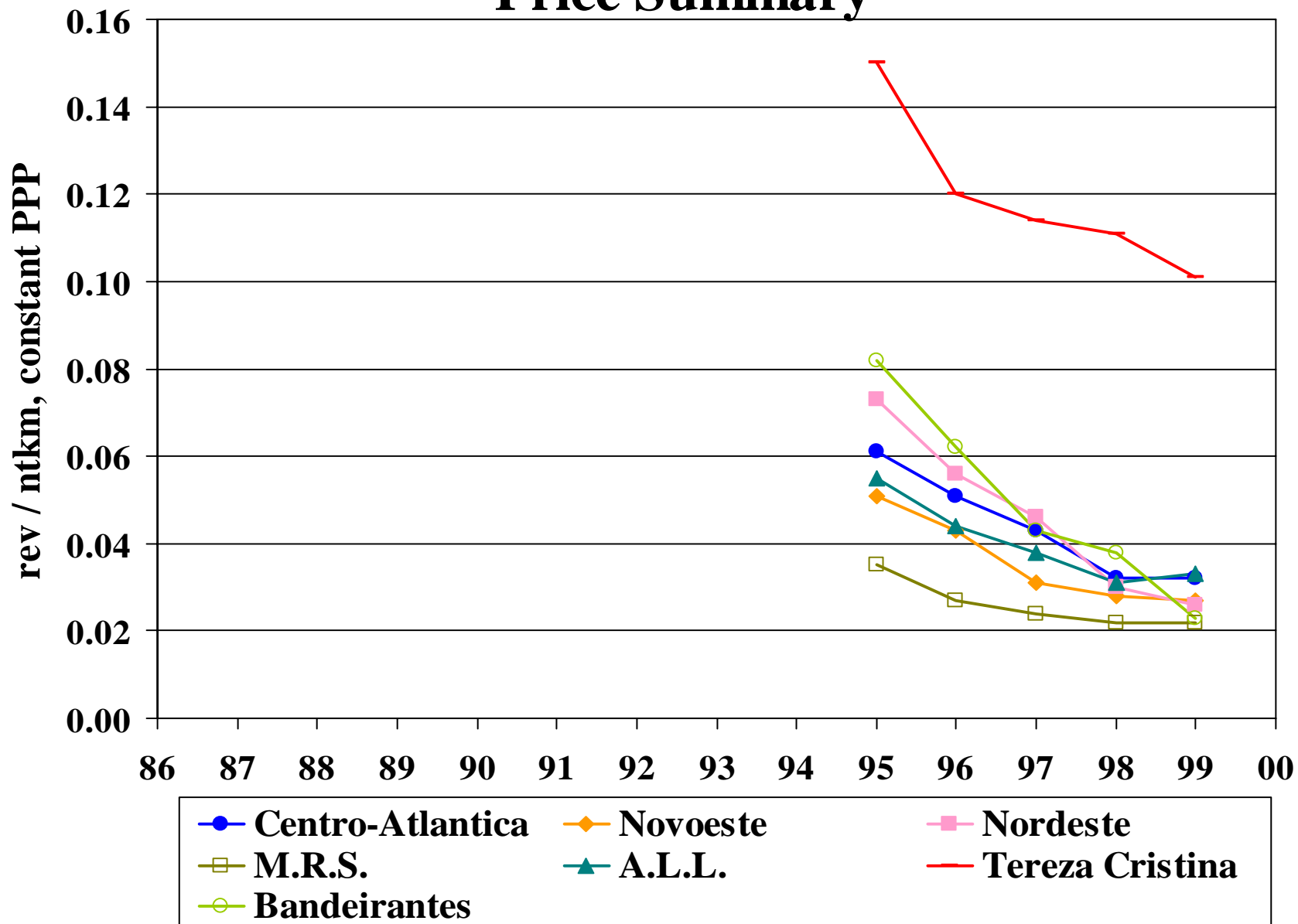


Bandeirantes - Price



- ▲ - rev/pkm current \$	—▲— rev/pkm constant PPP
- □ - rev/ntkm current \$	—■— rev/ntkm constant PPP

Price Summary



End