

# Railway Operations in Cote d'Ivoire

Private Railway Operations Database  
COTE D'IVOIRE

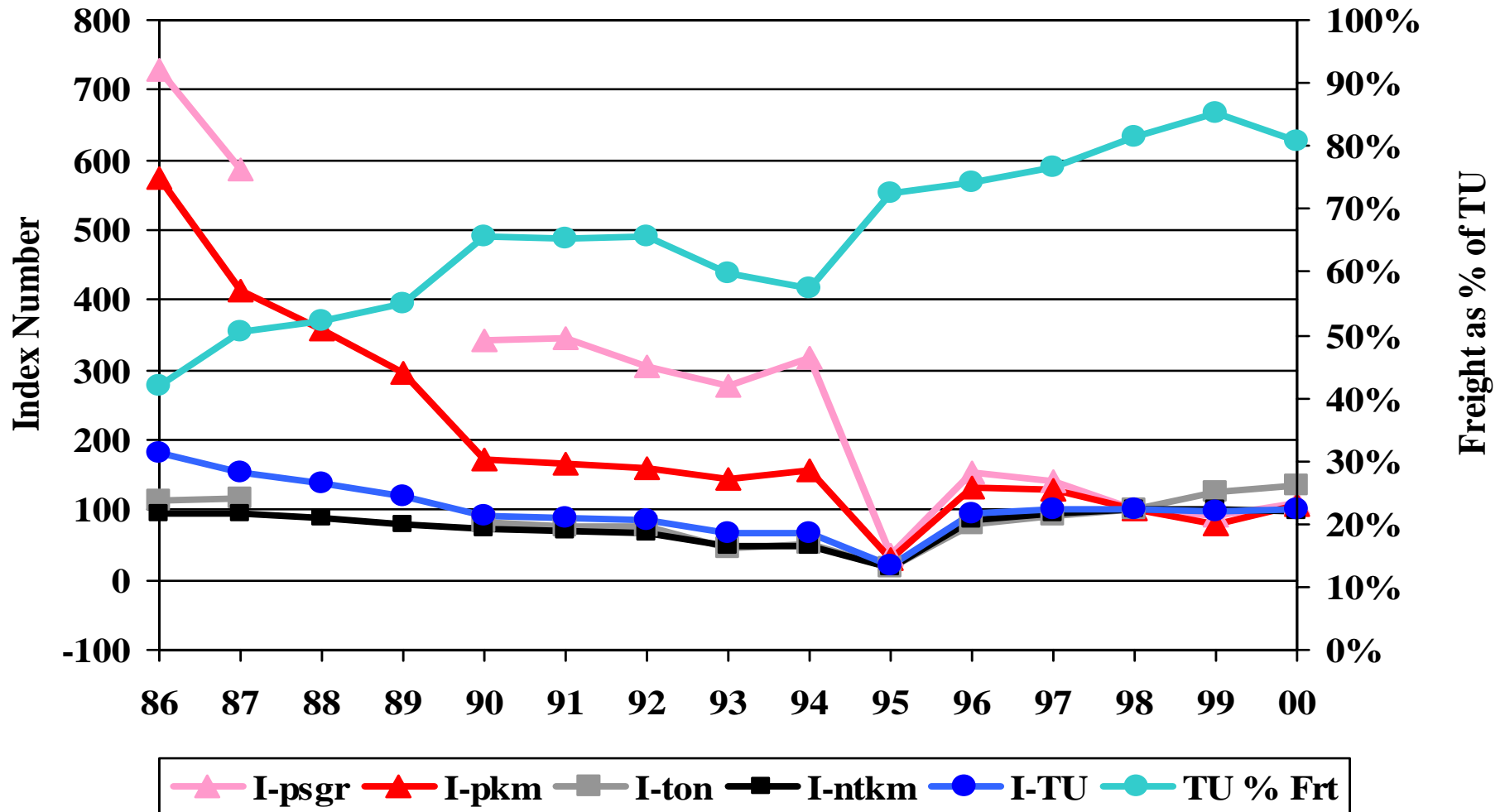
World Bank  
Infrastructure and Urban Department

# Railway Operations in Cote d'Ivoire

- Sitarail (SITA), 639 route km, metre gauge
- Private operation begins August 1995
- Bi-national concession encompassing Cote d'Ivoire and Burkina Faso.
- Comprises all of the former Societe Ivoirienne des Chemins de Fer (SICF) and the former Societe de Chemins de Fer du Burkina (SCFB).
- These in turn were formed in 1989 from the former Regie des Chemins de Fer Abidjan-Niger (RAN)

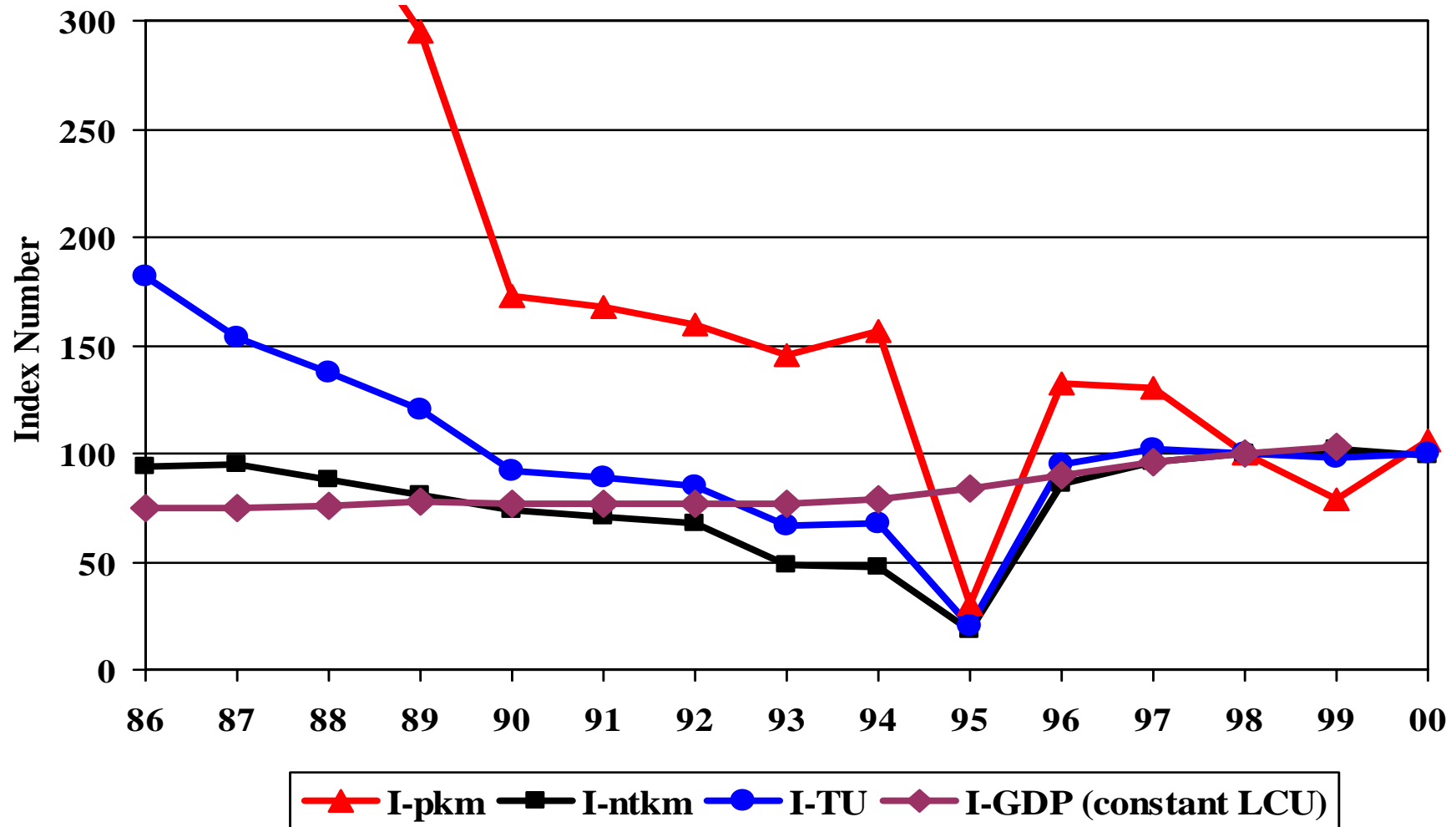
# SITA - Output Indices

(1998 = 100)

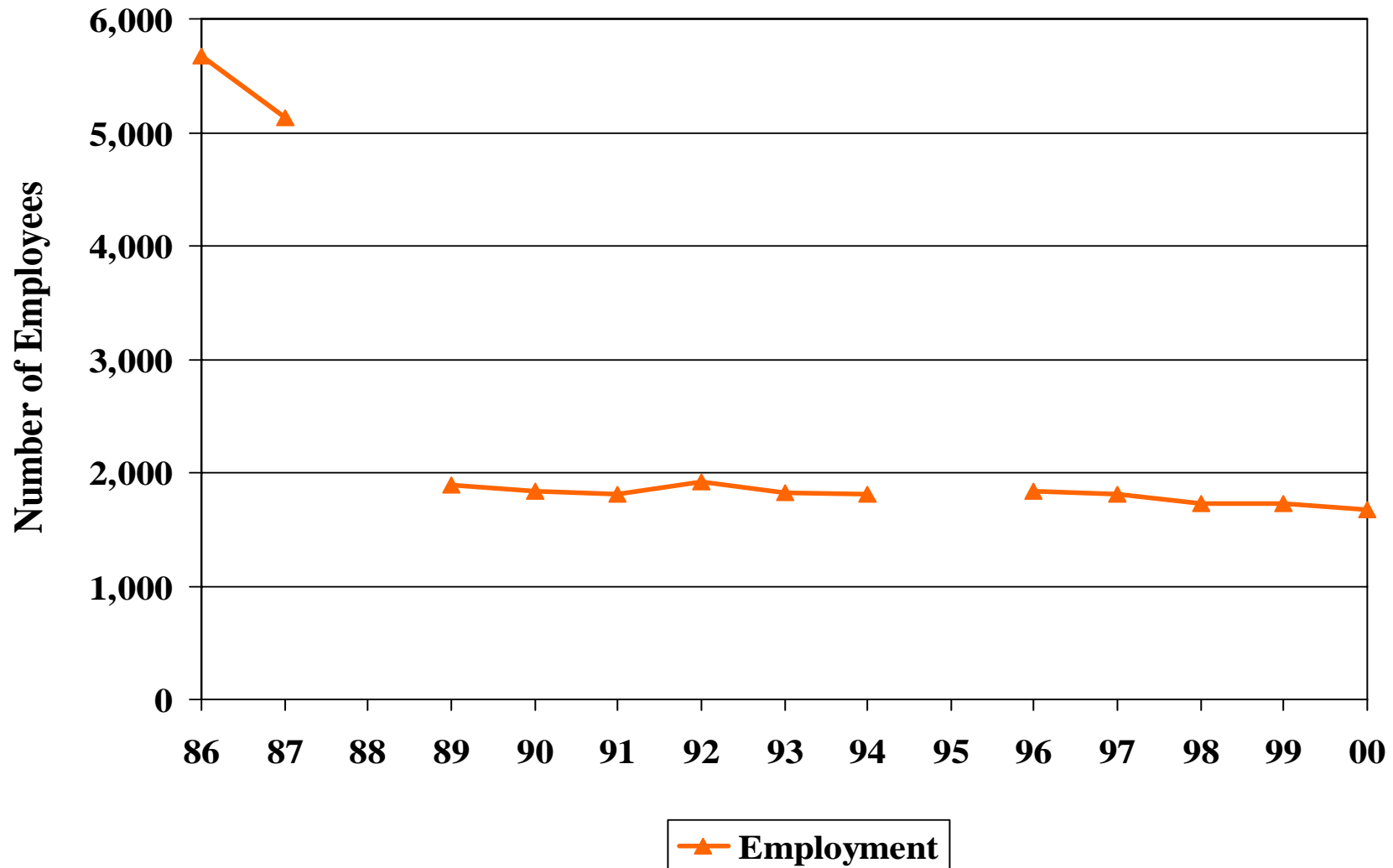


# SITA - Output (ntkm) and GDP

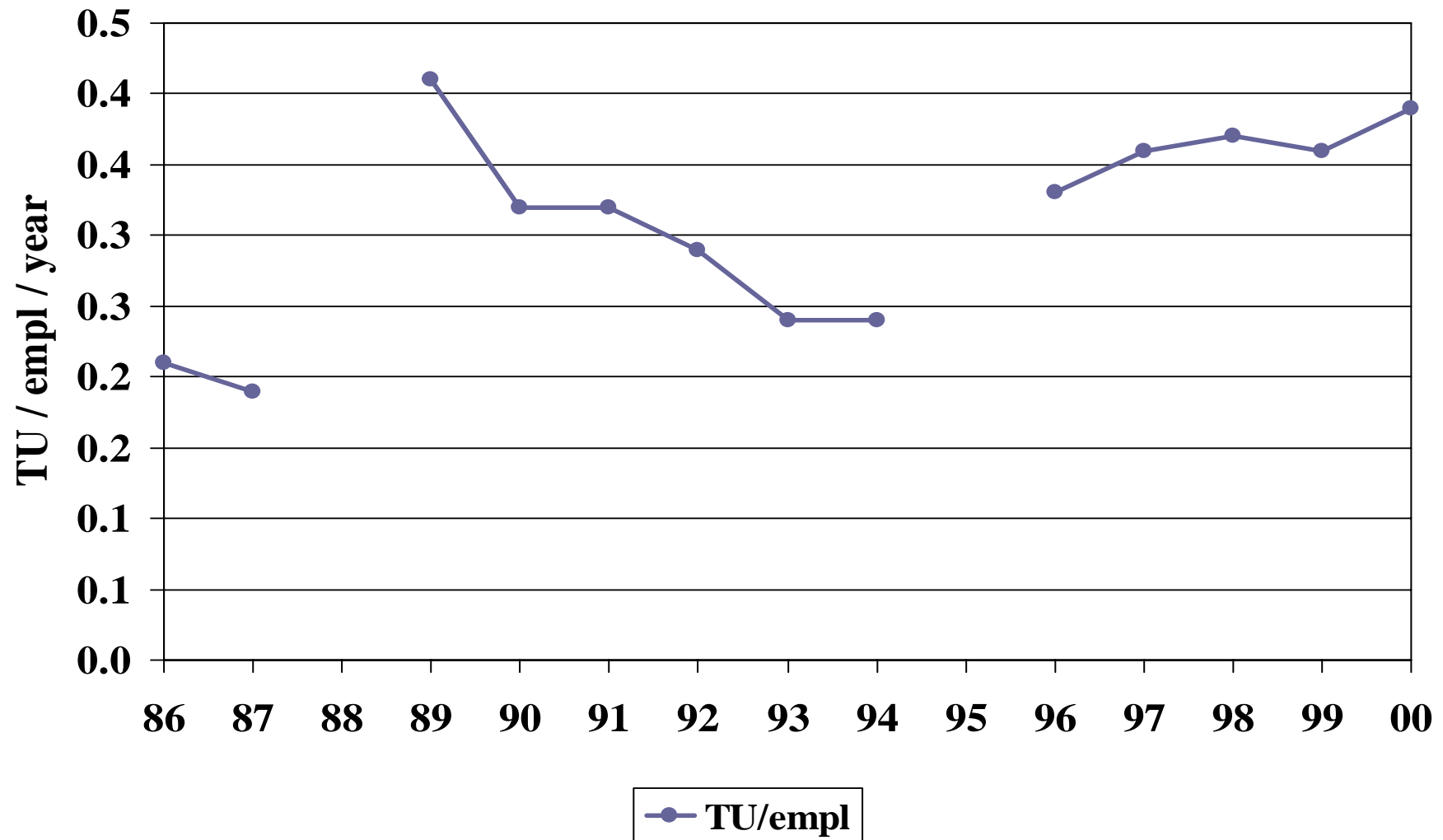
(1998 = 100)



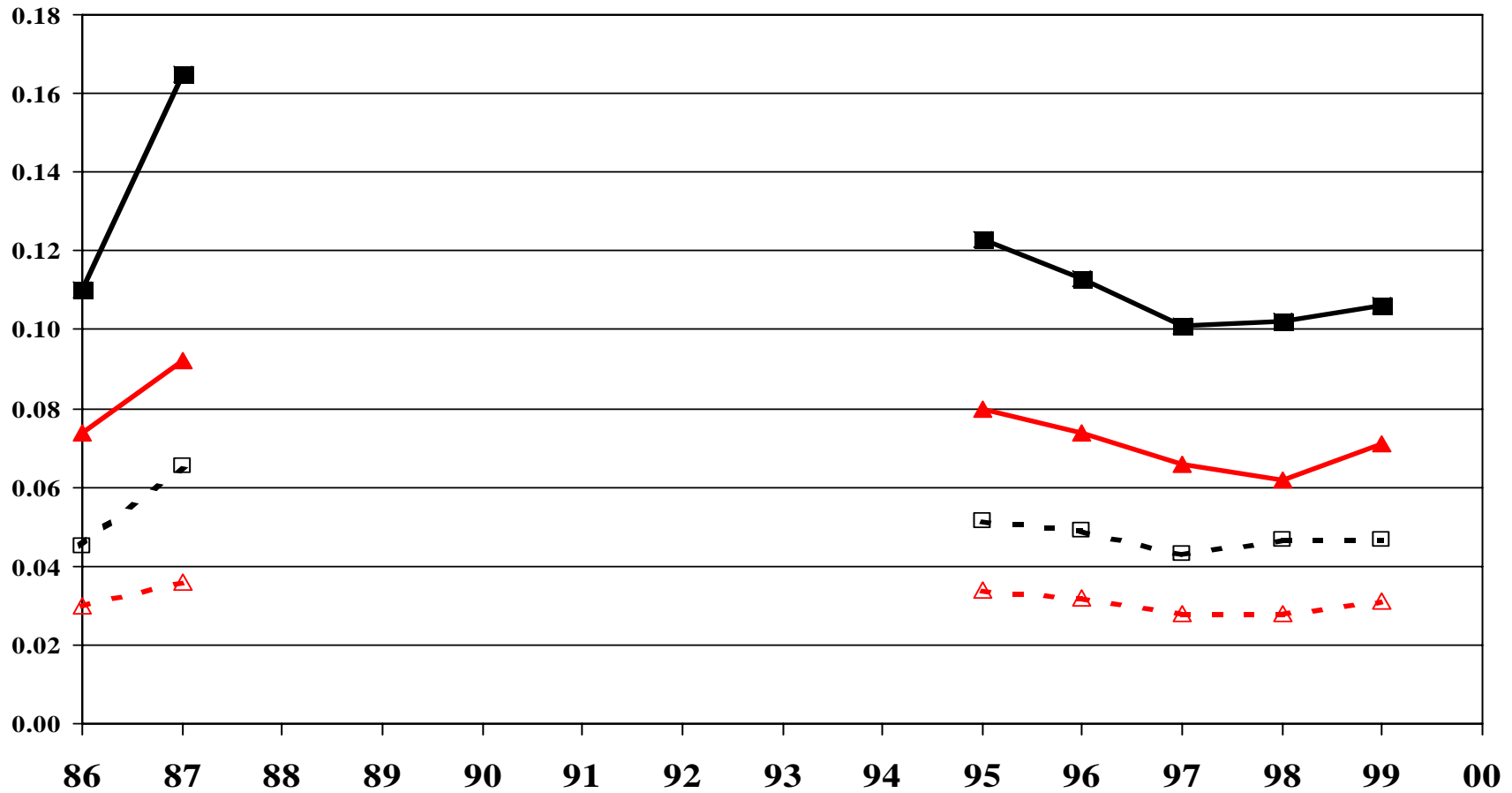
# SITA - Employment



# SITA - Labor Productivity



# SITA - Price



End