

Railway Operations in New Zealand

Private Railway Operations Database
NEW ZEALAND

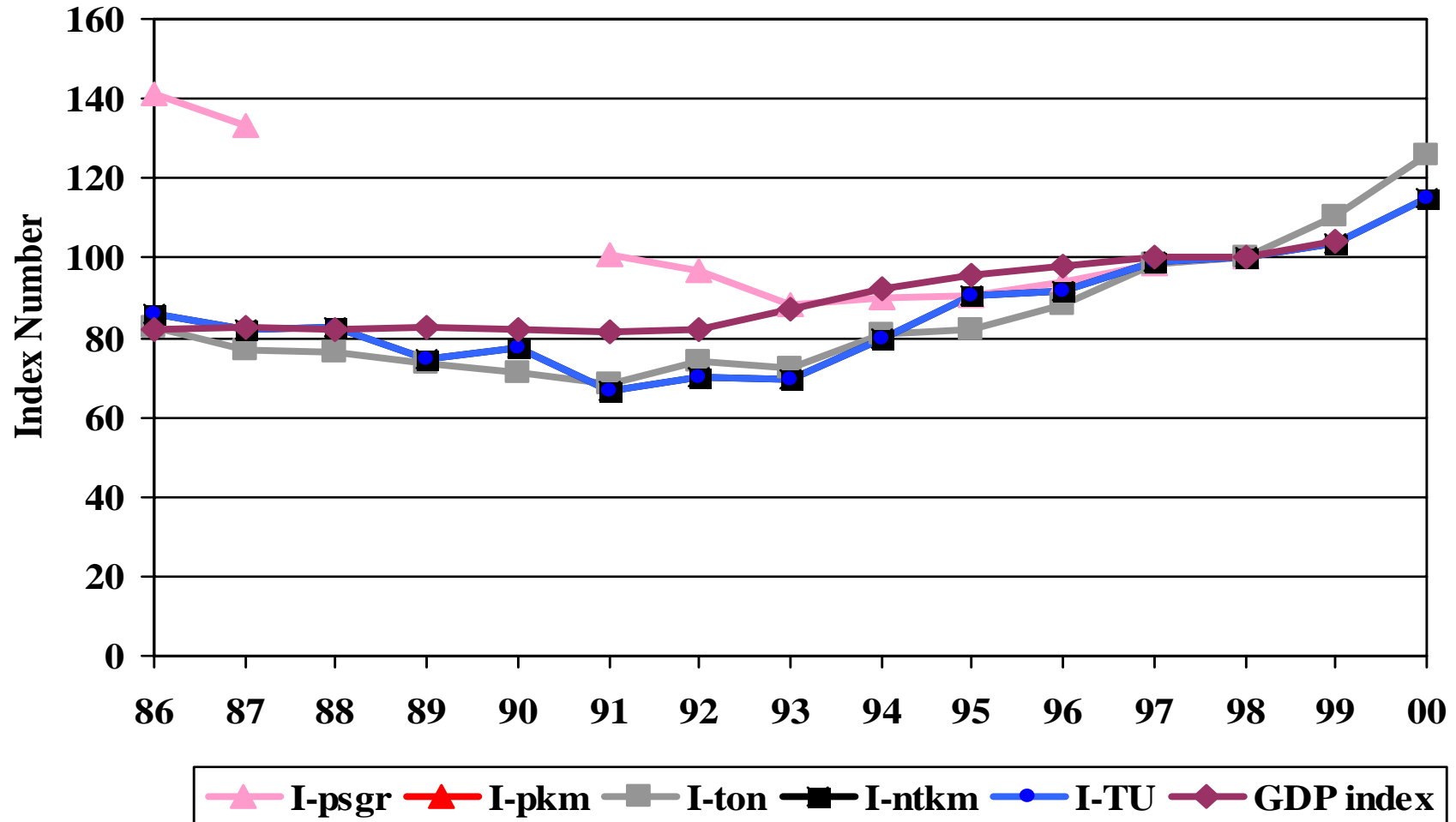
World Bank
Infrastructure and Urban Department

Railway Operations in New Zealand

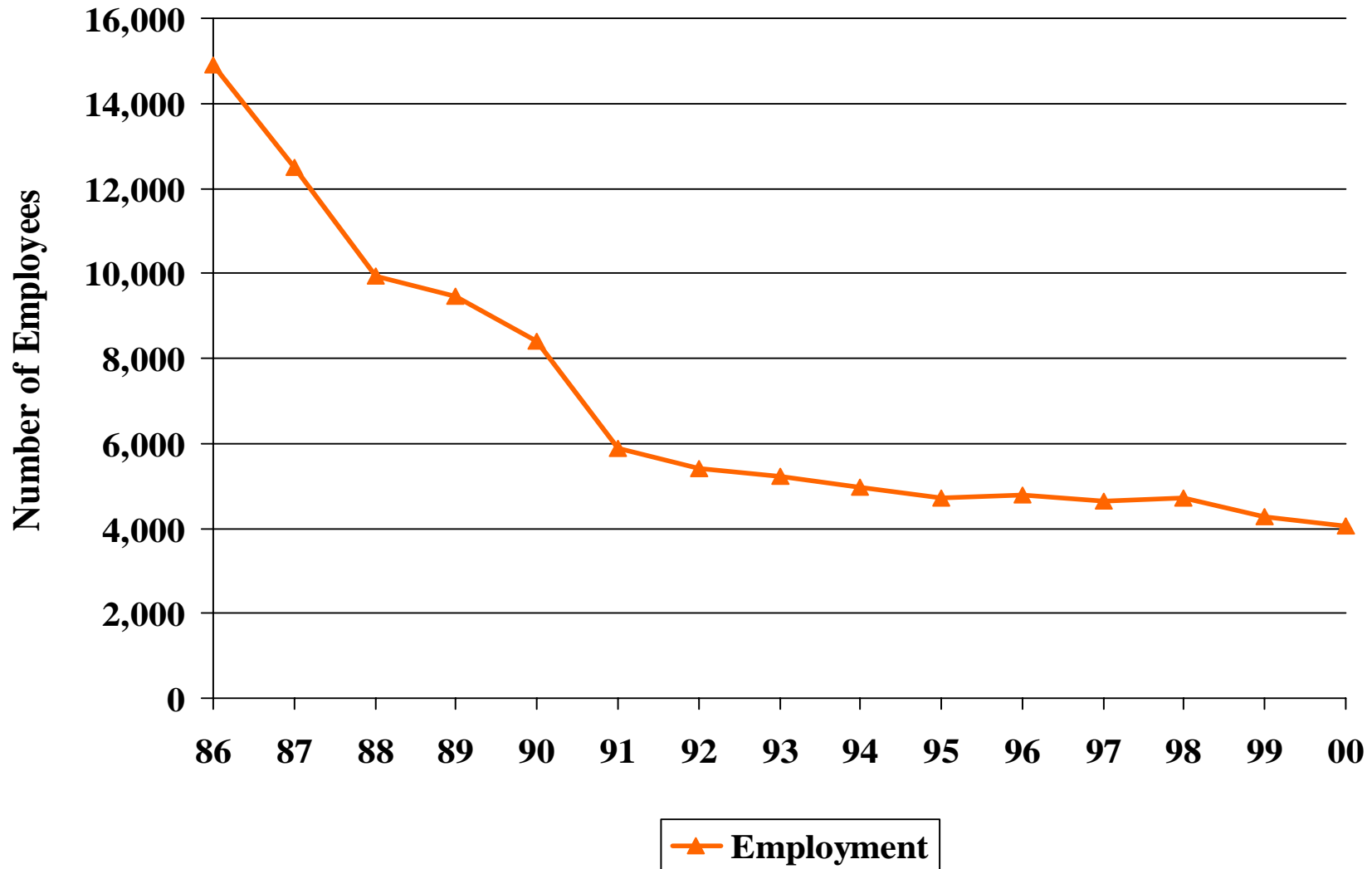
Tranzrail begins operations in 1993.

TranzRail - Output and GDP Indices

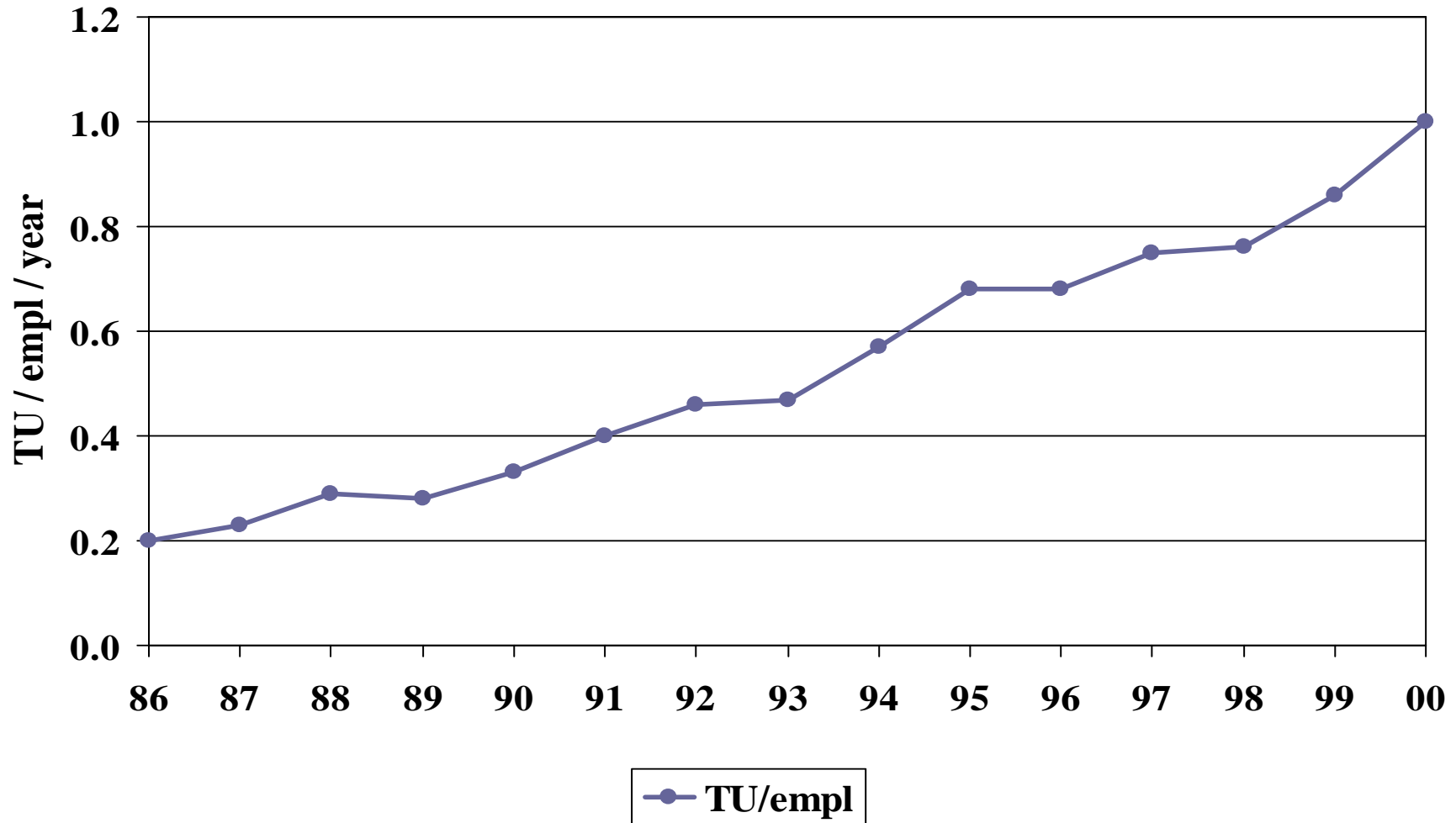
(1998 = 100)



TranzRail - Employment



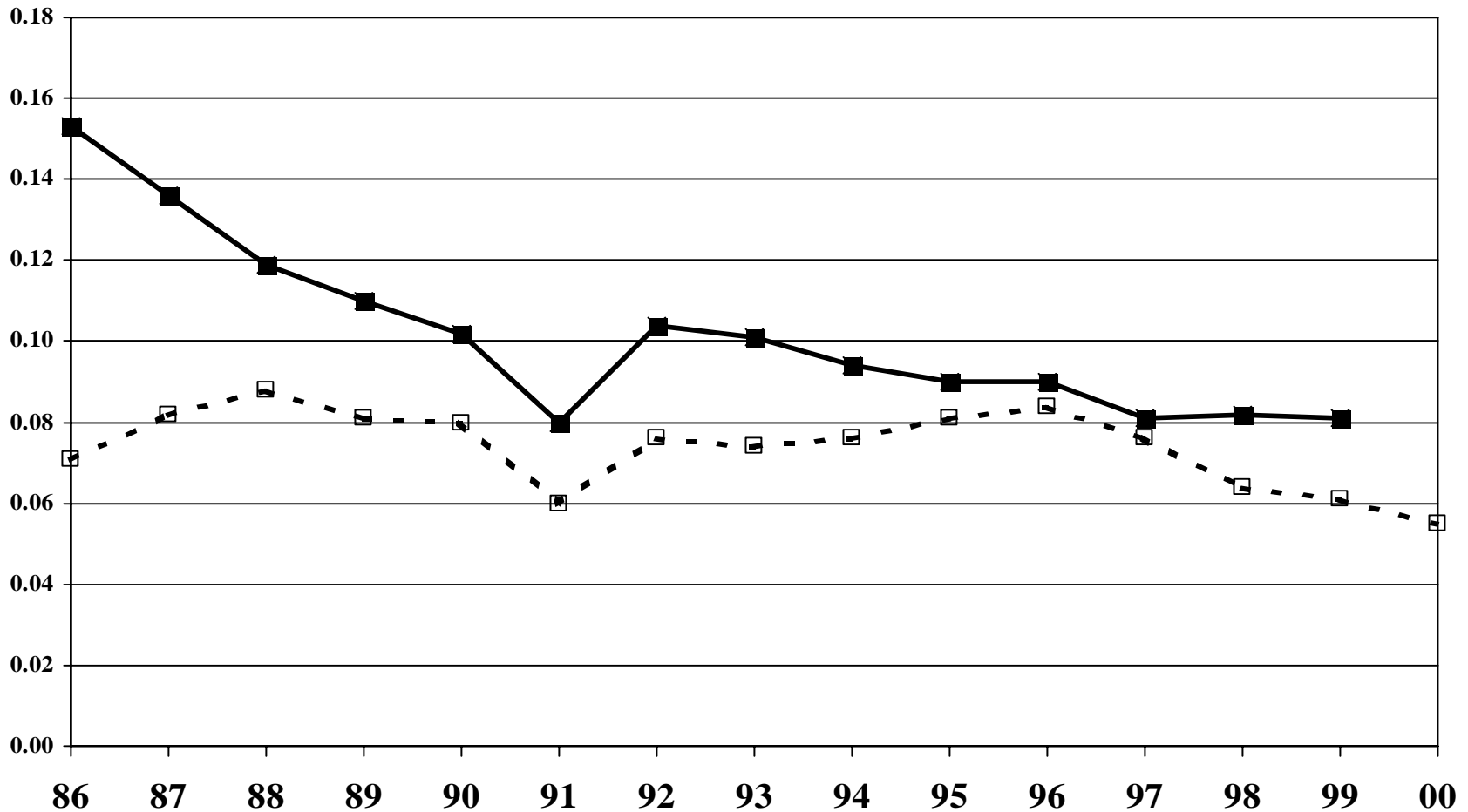
TranzRail - Labor Productivity



Private Railway Operations Database
NEW ZEALAND

World Bank
Infrastructure and Urban Department

TranzRail - Price



- ▲ - rev/pkm current \$ -▲- rev/pkm constant PPP
 - □ - rev/ntkm current \$ -■- rev/ntkm constant PPP

End