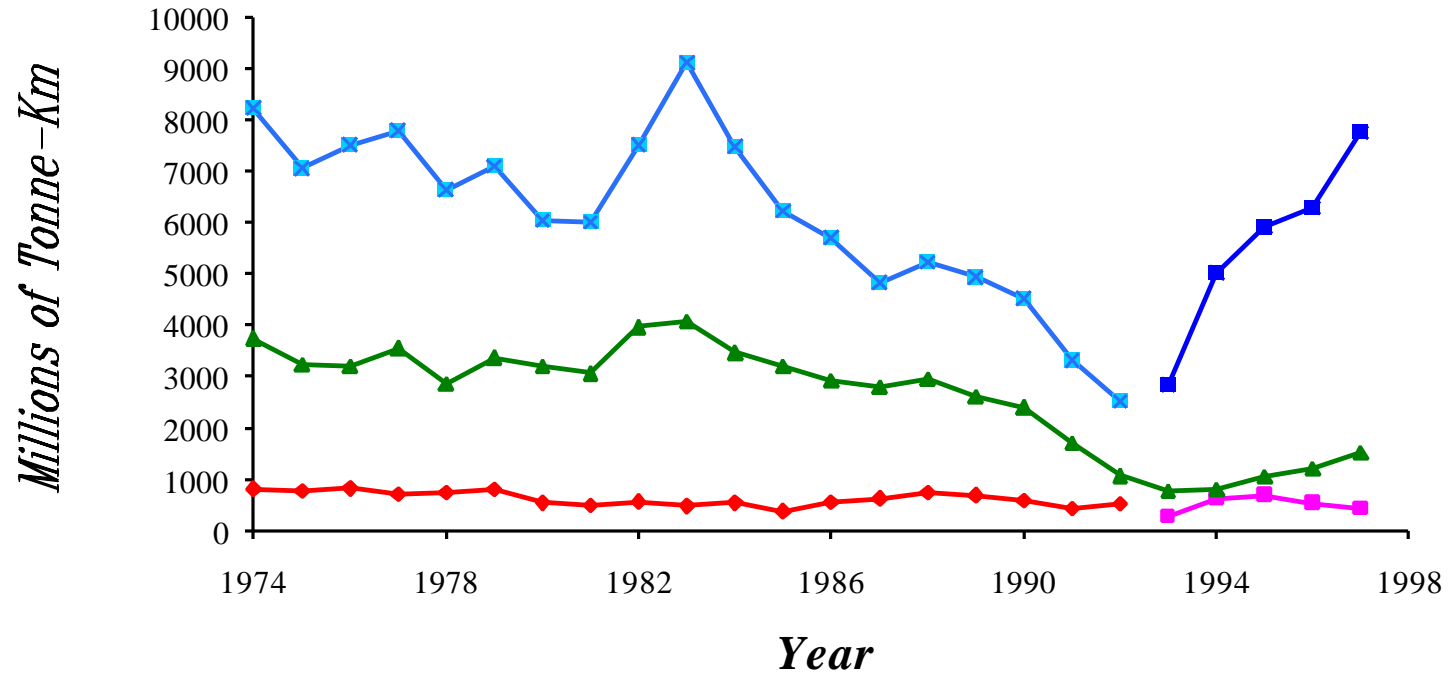


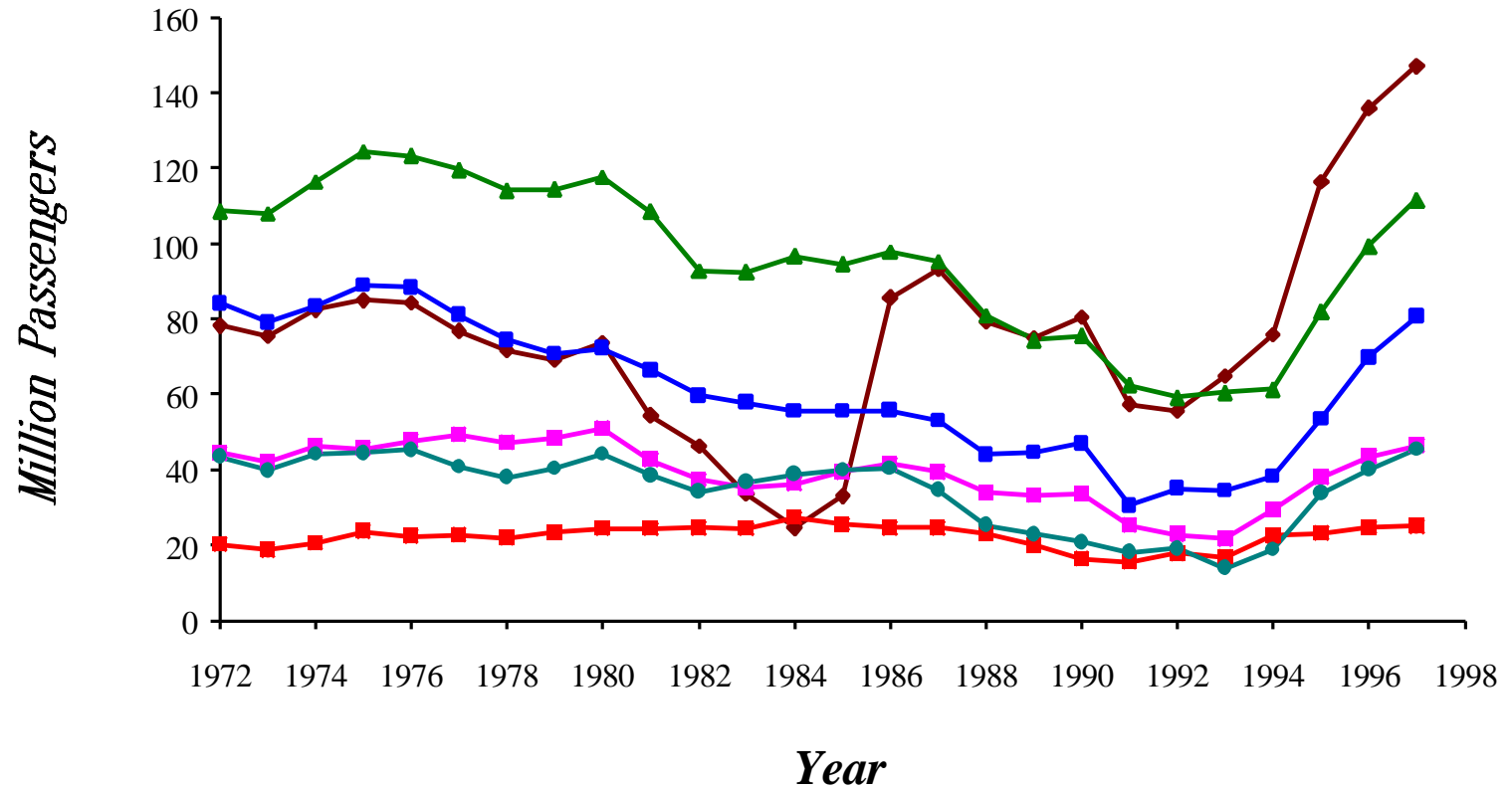


# Argentine Rail Freight



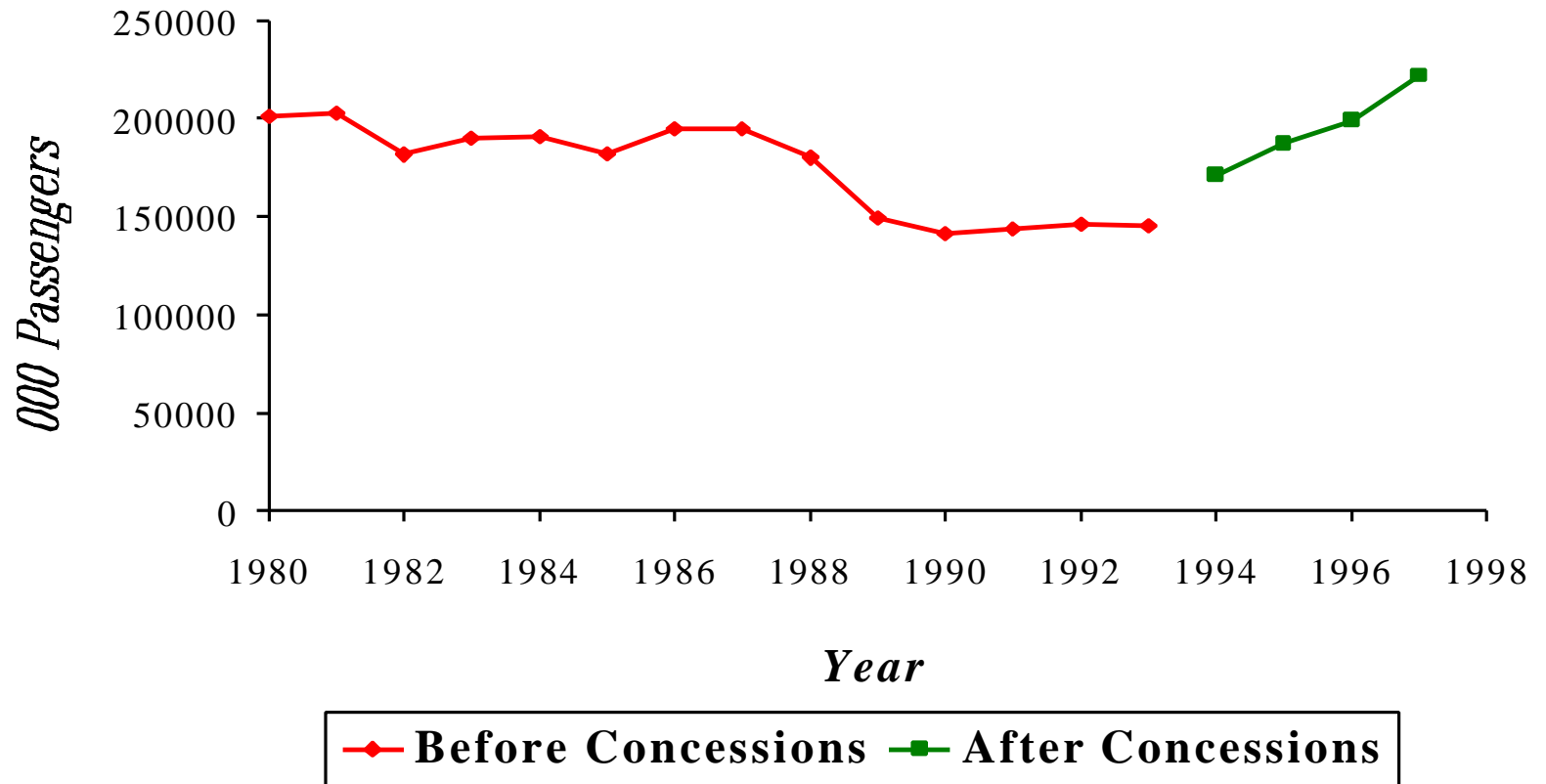


# Buenos Aires Suburban Passengers



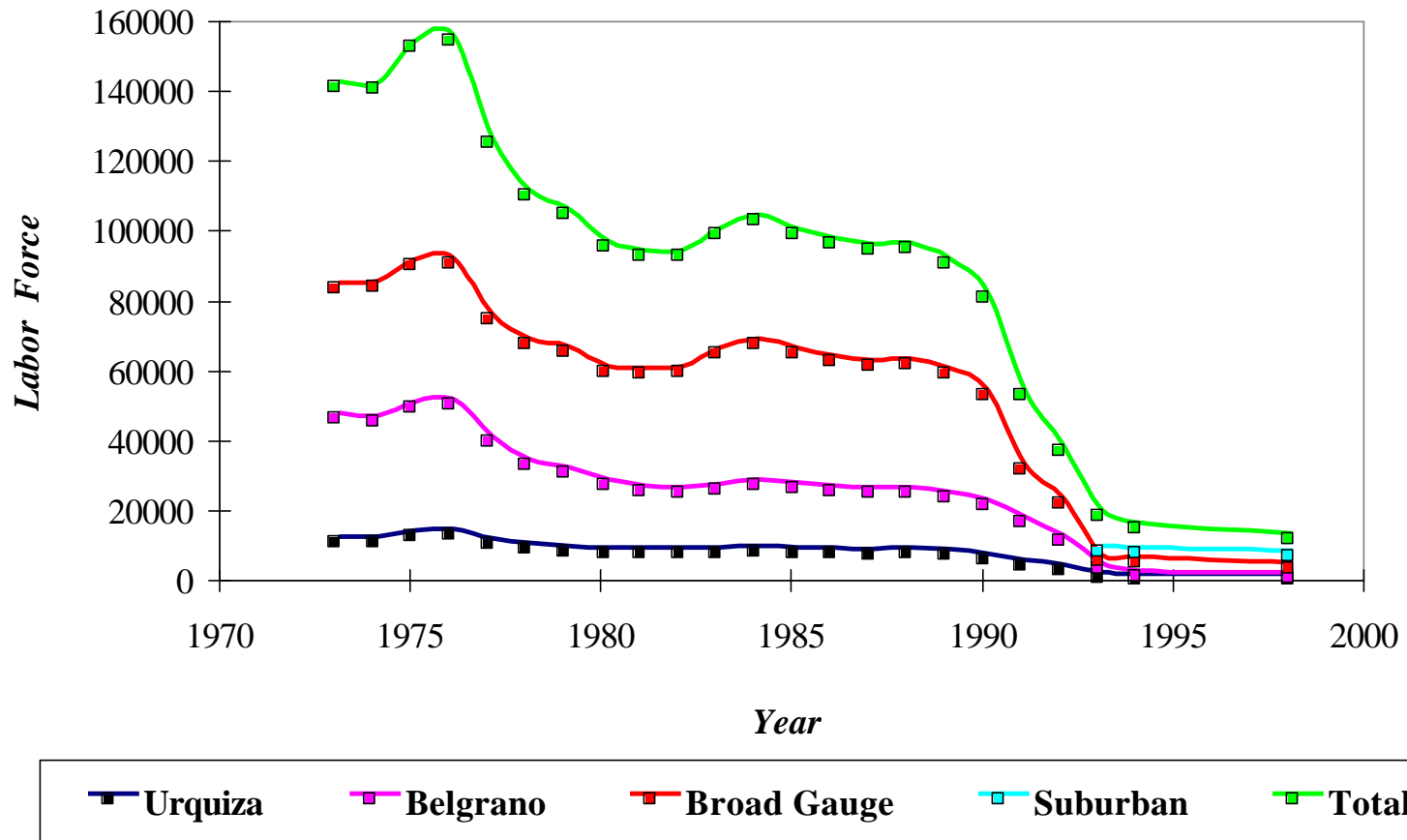


## *Passengers on Buenos Aires Metro: 1980 to 1997*





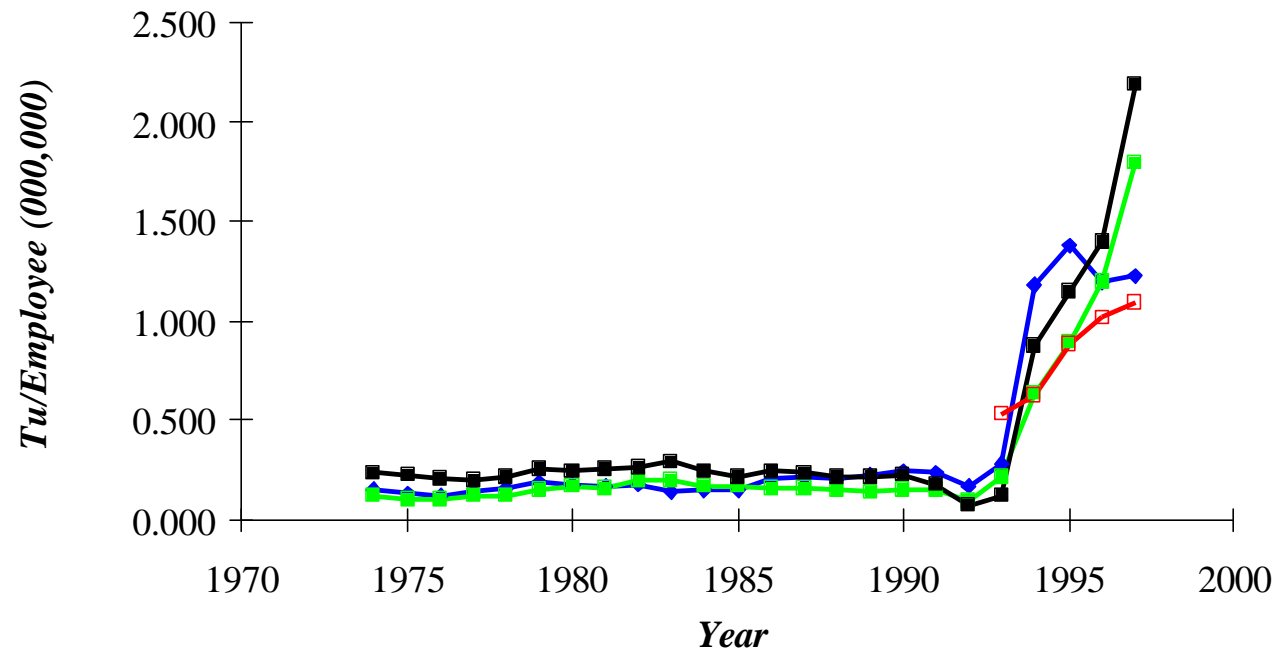
# *Labor on Argentina's Railways*



*Concessioning in Railways*

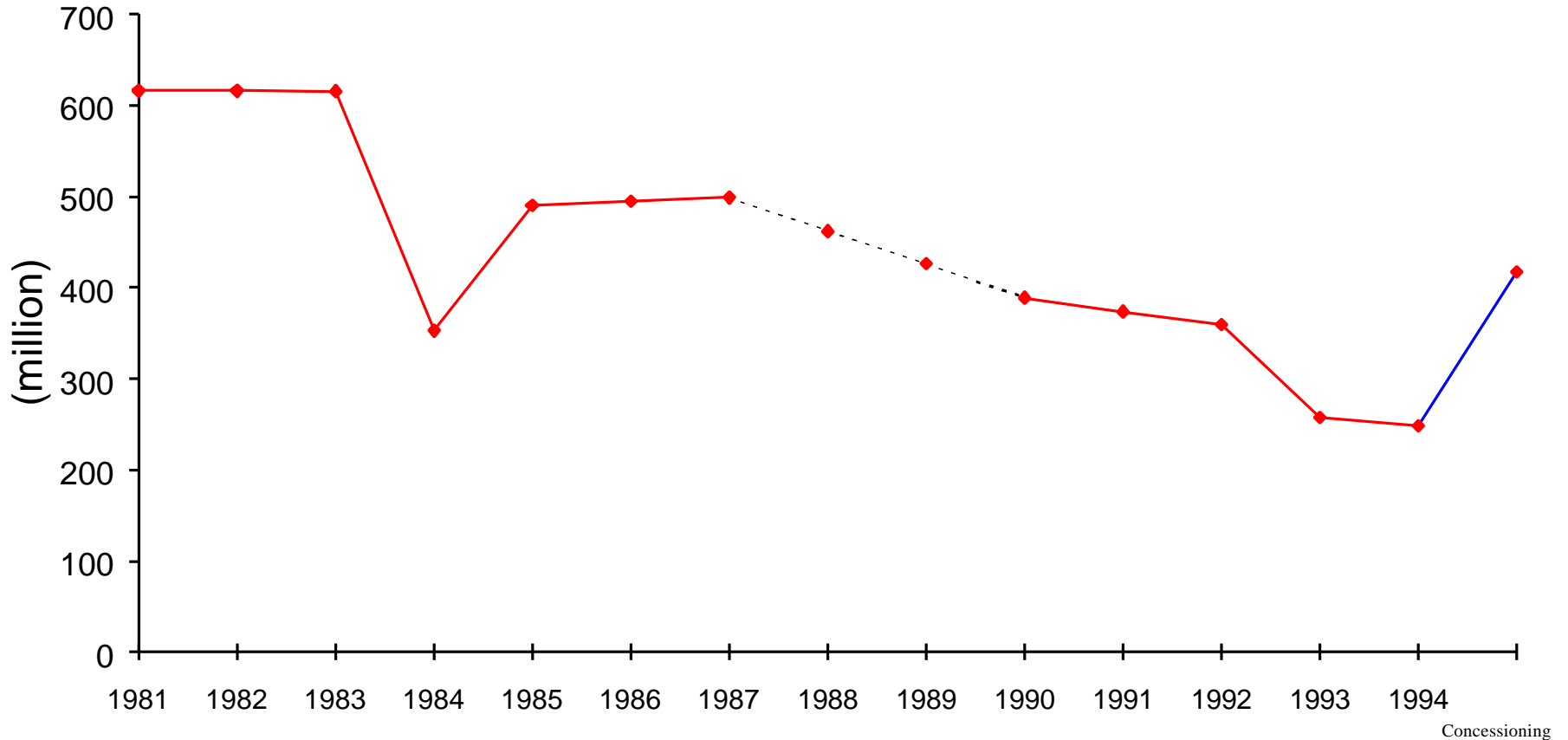


# *Labor Productivity on Argentine Railways*





## *Tonne-Km on Abidjan-Ouagadougou Railway*

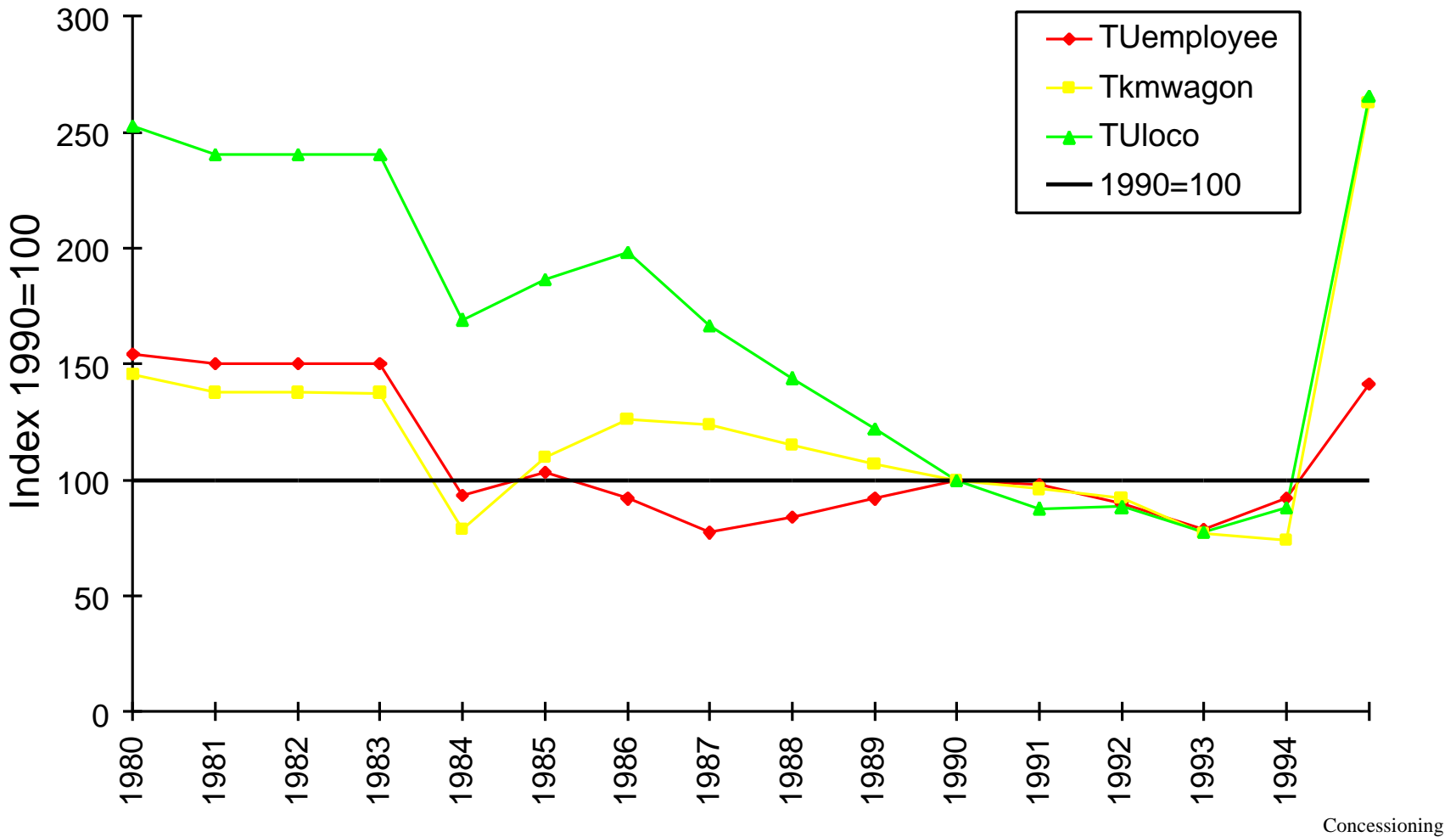


No data is available for 1988 and 1989

The concessionaire took over in October 1995 and a full year has been extrapolated from the first nine months.



## *Productivity on Abidjan-Ouagadougou Railway (1990=100)*



*Concessioning in Railways*



## *Labor productivity in Brazil and Bolivia and After Concessioning (000 TU/Employee)*

