



ERM



Red Sea-Dead Sea Water Conveyance Study Environmental and Social Assessment

Public Consultation and Communications Plan (PCCP)

September 2008

Prepared in collaboration with
COYNE ET BELLIER (France)

In association with Tractebel Engineering/Suez
(Belgium) and KEMA (The Netherlands)

Public Consultation and Communications Plan (PCCP)

Red Sea-Dead Sea Water Conveyance Study Environmental and Social Assessment

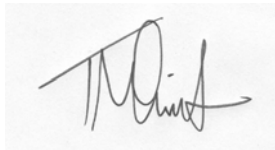
September 2008

Reference: 0084840

Prepared by: ERM in collaboration with the FS study
team led by Coyne et Bellier (France)

For and on behalf of
Environmental Resources Management

Approved by: Tim Smith



Signed:

Position: Project Director

Date: 18 September 2008

This report has been prepared by Environmental Resources Management the trading name of Environmental Resources Management Limited, with all reasonable skill, care and diligence within the terms of the Contract with the client, incorporating our General Terms and Conditions of Business and taking account of the resources devoted to it by agreement with the client.

We disclaim any responsibility to the client and others in respect of any matters outside the scope of the above.

This report is confidential to the client and we accept no responsibility of whatsoever nature to third parties to whom this report, or any part thereof, is made known. Any such party relies on the report at their own risk.

TABLE OF CONTENTS

1	INTRODUCTION	2
1.1	PREAMBLE	2
1.2	WHAT IS STAKEHOLDER CONSULTATION?	2
1.3	PURPOSE OF THE PCCP	3
1.4	STRUCTURE OF THE PCCP	3
2	BENEFICIARY PARTY AND WORLD BANK REQUIREMENTS FOR CONSULTATION AND DISCLOSURE	4
2.1	INTRODUCTION	4
2.2	BENEFICIARY PARTY REQUIREMENTS FOR CONSULTATION	4
2.3	WORLD BANK REQUIREMENTS FOR CONSULTATION	6
3	STAKEHOLDER IDENTIFICATION AND ANALYSIS	8
3.1	INTRODUCTION	8
3.2	STAKEHOLDER PROFILING AND MAPPING	8
4	ESA STAKEHOLDER ENGAGEMENT STRATEGY	12
4.1	OVERVIEW AND SCHEDULE	12
4.2	PHASE 1 CONSULTATION ACTIVITIES	12
4.3	PHASE 2 CONSULTATION ACTIVITIES	16
4.4	PHASE 3 CONSULTATION ACTIVITIES	16



1 INTRODUCTION

1.1 PREAMBLE

1.1 The following document is the *Public Consultation and Communications Plan (PCCP)* prepared for the Feasibility Study and Environmental and Social Assessment (collectively referred to as the ‘study program’) of the proposed Red Sea-Dead Sea Water Conveyance (RDP, or ‘Proposed Project’).

1.2 The PCCP has been developed as part of the scoping phase of the study program and will guide the study team and beneficiary parties in undertaking a robust public consultation program that fully supports and informs the detailed technical, economic, environmental and social analyses that will be carried out.

1.3 The PCCP is a working document, that will be updated and adjusted as the ESA progresses and project planning evolves. It thus provides a framework to manage effective and meaningful engagement with key stakeholders. There will be 3 Phases of consultation. At this stage, the PCCP contains details about Phase 1 consultation activities, with Phase 2 and 3 activities described in outline. At the end of each Phase of work, a consultation report will be produced which summarizes consultation activities undertaken to date, and presents the detailed engagement strategy for the next phase of work.

1.2 WHAT IS STAKEHOLDER CONSULTATION?

1.4 Stakeholder consultation is an inclusive and culturally appropriate process for sharing information and knowledge that seeks to understand the concerns of stakeholders, and to provide them with an opportunity to express their views. These views are then considered, responded to and incorporated into the decision making process.

1.5 Effective consultation therefore requires the prior disclosure of relevant and adequate project information to enable stakeholders to understand the risks, impacts and opportunities of the project. It also needs to be a two way communication process that imparts information to stakeholders, but also obtains additional information from them that would not be obtained through (for example) specialist studies. It therefore needs to take place at critical stages of the project, when there is important information to be shared with stakeholders and when it is necessary to obtain key information that may inform project design.



PURPOSE OF THE PCCP

1.6 The overall purpose of the PCCP is to ensure a consistent, comprehensive and coordinated approach to stakeholder consultation and disclosure throughout the study program that enables a free, prior and informed consultation of the affected communities in an inclusive and culturally appropriate manner.

1.7 The PCCP needs to demonstrate that the study team is fully committed to a 'best practice' approach to stakeholder engagement, and that the consultation process will be carried out in keeping with the policies and regulations of three beneficiary parties, as well as the environmental and social safeguard requirements of the World Bank.

1.8 In summary, the goals of the PCCP are to:

- Generate a good understanding of the proposed project;
- Manage expectations and misconceptions;
- Understand potential significant impacts;
- Develop effective mitigation measures and management plans;
- Optimise any local benefits that can be delivered through the proposed project; and
- Enable affected communities to be involved in the design process.

1.9 The stakeholder engagement activities need to be early, on-going and iterative, throughout the life of the study program. The PCCP is therefore a working document that will be updated and adjusted as the study program evolves.

STRUCTURE OF THE PCCP

1.10 The structure of this PCCP is as follows.

- **Section 1:** Introduction;
- **Section 2:** Beneficiary Party and World Bank Requirements for Consultation and Disclosure;
- **Section 3:** Stakeholder Identification and Analysis; and
- **Section 4:** ESIA Stakeholder Engagement Strategy.

Annexes:

- **Annex A:** Provisional Stakeholder Listings;
- **Annex B:** Provisional Schedule for Phase 1 Consultation Meetings;
- **Annex C:** Template for Consultation Log;
- **Annex D:** Template for Issue Tracking; and
- **Annex E:** Draft Questions and Answers (Q&As).



2.1**INTRODUCTION**

2.1 The following section outlines international good practice requirements for the consultation and disclosure that should be undertaken as part of environmental assessment procedures. The relevant requirements of the Environmental Impact Assessment (EIA) process within each of the beneficiary parties are also noted.

2.2 The scope of the consultation and disclosure process being undertaken as part of this Environmental and Social Assessment (ESA) will at least match and often exceed the requirements of the relevant beneficiary party's procedures. It should be noted, however, that the ESA is being conducted as part of a Feasibility Study into the project. The beneficiary EIA systems all locate the EIA study as part of an application for consent from the relevant planning/permitting authorities to site and construct a development. The level of detail that accompanies such an application is greater than that which is available during a feasibility assessment. If the RSDS option proves feasible and it is decided to implement the scheme, further design work will be undertaken and formal development planning applications will be submitted. Such applications will be accompanied by further consultations on more detailed environmental information, perhaps in the form of a full EIA carried out under beneficiary rules.

2.2**BENEFICIARY PARTY REQUIREMENTS FOR CONSULTATION****2.2.1****Israeli Requirements**

2.3 Environmental Impact Assessments have been used in Israel from the mid-1970s, although regulations governing the requirements of EIA documents were only promulgated under the Planning and Building Law in 1982 and revised in 2003.

2.4 The Environmental Impact Statement of 1982 and the Environmental Impact Assessment of 2003 do not explicitly provide for public consultation. However, public bodies and individuals are free to inspect plans that have been submitted to regional and local planning authorities and to file opposition during the deposition period of any given plan. There is also an appeal process in case an objection is rejected.



2.2.2

Jordanian Requirements

2.5 Jordan's Environmental Impact Assessment Regulation No 37, 2005 requires any project which may have a significant impact on the environment, to carry out an Environmental Impact Assessment (EIA), before permission to construct or operate is given. A Scoping Session is required, where potentially affected stakeholders and statutory bodies are consulted, and invited to comment on the draft terms of reference for the assessment. The process is governed by the Ministry of Environment, which convenes a technical committee to review the study and results and make recommendations to the Ministry. The EIA study must describe the pre-project baseline, examine project alternatives, identify and assess potential impacts, and develop an Environmental Management Plan (EMP) which includes mitigation and monitoring measures which should be agreed and implemented. There is presently no requirement for disclosure of the study results other than to the Ministry's technical committee, although this committee includes both technical and statutory members.

2.6 However, the Aqaba Special Economic Zone (ASEZ) is a separate jurisdiction, and has a separate environmental permitting regime, operating under the ASEZ Environmental Protection Regulation No 21. This also requires projects which may have a significant impact on the environment, to carry out a comprehensive Environmental Impact Assessment (EIA), before permission to construct or operate is given. This Regulation sets out the requirements of the EIA study, and has a particular focus on protection of the marine environment. There is a similar requirement for stakeholder consultation during scoping, but in the ASEZ, the study results must also be disclosed and discussed with the stakeholders. The Aqaba Special Economic Zone Authority (ASEZA) governs this process, and can involve any party it sees fit to be involved in the study review process.

2.7 Elements of the RSDSC will pass through both jurisdictions, and therefore will eventually require separate environmental clearances in each jurisdiction.

2.2.3

Palestinian Authority Requirements

2.8 The Palestinian Environmental Law of 1999 states that "Every person... may also obtain any necessary official information to discover the environmental impact of any industrial, agricultural, constructional or other activity within the development programs, in compliance with the law."

2.9 Additionally, the Palestinian Environmental Assessment Policy of 2000 states that "the Palestinian National Authority seeks to facilitate stakeholder consultation in the environmental assessment of development activities to be carried out within Palestine, and to provide public access to the information



on which those environmental assessments are based” Article 3 of the Policy states that “Stakeholder consultation is an essential component of EA policy”.

2.10 The Policy further stipulates 5 requirements for stakeholder consultation as follows:

1. Proponents are required to consult stakeholders during the scoping and conduct of Environmental Impact Assessments.
2. Stakeholder consultation may be required during Initial Environmental Evaluations as determined by the Ministry (currently the Environmental Quality Authority (EQA)).
3. The Ministry is empowered to conduct its own stakeholder consultation to verify the information provided, or extend the proponent’s consultations.
4. Initial Environmental Evaluation and Environmental Impact Assessment Reports shall be made available by proponents for stakeholder review and comment as specified by the Ministry.
5. The Ministry shall coordinate EA consultations with consultations by other authorities pursuant to other regulations and laws.

2.3 *WORLD BANK REQUIREMENTS FOR CONSULTATION*

2.3.1 *World Bank Group Operation Policies*

2.11 The World Bank Group’s Environmental Assessment Policy (OP 4.01, January 1999) provides that project-affected groups and local non-governmental organizations (NGOs) should be consulted about the project’s potential environmental and social impacts during the Environmental Assessment (EA) process. The purpose of this consultation is to consider local views when designing the environmental and social management plans as well as in the project structure.

2.12 Other relevant World Bank Group policies with provisions for public consultation are listed in *Box 2.1*.

Box 2.1 World Bank Operational Policies and Public Consultation

- Operational Policy 4.04: Natural Habitats
- Operational Policy 4.11: Safeguarding Cultural Property
- Operational Policy 4.12: Resettlement
- Revised Draft Operational Policy 4.10: Indigenous People (replaces Operational Directive 4.20 on Indigenous Peoples)
- Operational Policy 14.70: Involving Non-Government Organizations in Bank-Supported Activities



2.13 The World Bank Group requirements focus on:

- early consultation with affected people and NGOs;
- early information disclosure; and
- providing information in a way that allows informed consultation with stakeholders.

2.14 In addition to the requirement for consultation with stakeholders, the World Bank Group has specific requirements for disclosure of documentation resulting from the EIA process. These include preparation and publication of a Public Consultation and Disclosure Plan (PCDP) for consultation, disclosure of the draft EIA in public places, and preparation of an Environmental Action Plan (EAP).



3.1 INTRODUCTION

3.1 For the purposes of the PCCP, a stakeholder is defined as ‘*any individual or group who is potentially affected by the proposed Project or can themselves affect the proposed Project*’.

3.2 The objective of stakeholder identification process is therefore to establish which organizations and individuals may be directly or indirectly affected (positively or negatively) by the proposed project. Stakeholder identification is an ongoing process requiring regular review and updates.

3.2 STAKEHOLDER PROFILING AND MAPPING

3.3 Stakeholder profiling and mapping was initiated during the planning and scoping phase (Phase 1) of the Environmental and Social Assessment. For each of the three beneficiary parties (Israel, Jordan and the Palestinian Authority), a small group of knowledgeable parties or individuals was assembled to assist with the stakeholder profiling and mapping.

3.4 During this exercise it was found that the community level stakeholders were less well known, especially along the conveyance route in the Wadi Araba/Arava ⁽¹⁾. As such, a rapid survey of the Wadi Araba/Arava communities was commissioned in July 2008 whereby a consultant visited or documented each of the villages along the potential conveyance route to assess:

- Approximate population;
- Main livelihoods (men and women);
- Ethnic composition;
- Key meetings venues available; and
- Local community leaders (and their contact details).

3.5 This information fed into the stakeholder mapping as well as the plans for local level consultation outlined in *Sections 3 and 4*.

3.2.1 Stakeholder Identification

3.6 In order to develop an effective PCCP it was necessary to determine who the stakeholders are and understand their priorities and objectives in

(1) In Jordan the area in question is known as the “Wadi Araba” and in Israel as the “Arava Valley”, or simply “Arava”.



relation to the project. By classifying stakeholders it has been possible to develop a plan that is tailored to the needs of different stakeholder groups.

3.7 Recognizing the strategic importance of the project, a diverse range of stakeholders were identified that could be involved in the PCCP process. Different issues are likely to concern different stakeholders and so different types of stakeholder were grouped based on their connections to the project (see *Table 3.1*). Having an understanding of the connections of a stakeholder group to the project helps identify the key objectives of engagement.

Table 3.1 Stakeholder Groups and Connections to the Proposed Project

Stakeholder Groups and Types	Connections to the Project
Government	
Government – National	National, regional and local government individuals of primary political importance to the project.
Government – Local	
Communities/landowners	
Local Communities	Communities and other land owners that will receive impacts (positive or negative) as a result of the Project.
Community Based Organisations (CBOs)	
Land Owners/Users	
Private Sector	
Business organisations	Individuals or organisation with direct economic interest in the project. This may be through gaining contracts or other benefits or due to economic impacts caused by the project. They may also be potential business partners and finance institutions.
Companies - potential suppliers and contractors	
Companies – other	
Labour unions	
Financial community	
Tourism organisations	
Nongovernmental Organisations/Research Institutions	
International NGOs	Organisations with a direct interest in the project and might influence it directly or through public opinion. Such organisations often have useful data and insight and may become project partners in areas of common interest.
Local NGOs	
Research/Academic Institutions	
IFIs and Donors	
Multilateral and Bilateral Organisations	Potential financiers with requirements for international best practice.
Other (political parties, religious groups, media)	
Political Parties	Other international, regional and local groups with direct interest in the project.
Religious Organisations	
International and National Media	

3.8 Following the identification of stakeholder groups and connections, stakeholder details are being compiled for all three beneficiary parties. These lists are ‘living documents’ that will be updated as engagement progresses. Preliminary versions can be found in *Annex A* and updated versions will be annexed to the Phase 1 Consultation Report.



3.2.2

Stakeholder Mapping

3.9 For the purposes of this PCCP internal stakeholder mapping is being undertaken by the study team to identify the 'level of interest' and 'likely access to information' of each stakeholder. If it is known that certain stakeholders are broadly positive or negative towards the proposed Project this is also being identified, but at these early stages this is largely unknown.

3.10 This process of stakeholder mapping is useful so that:

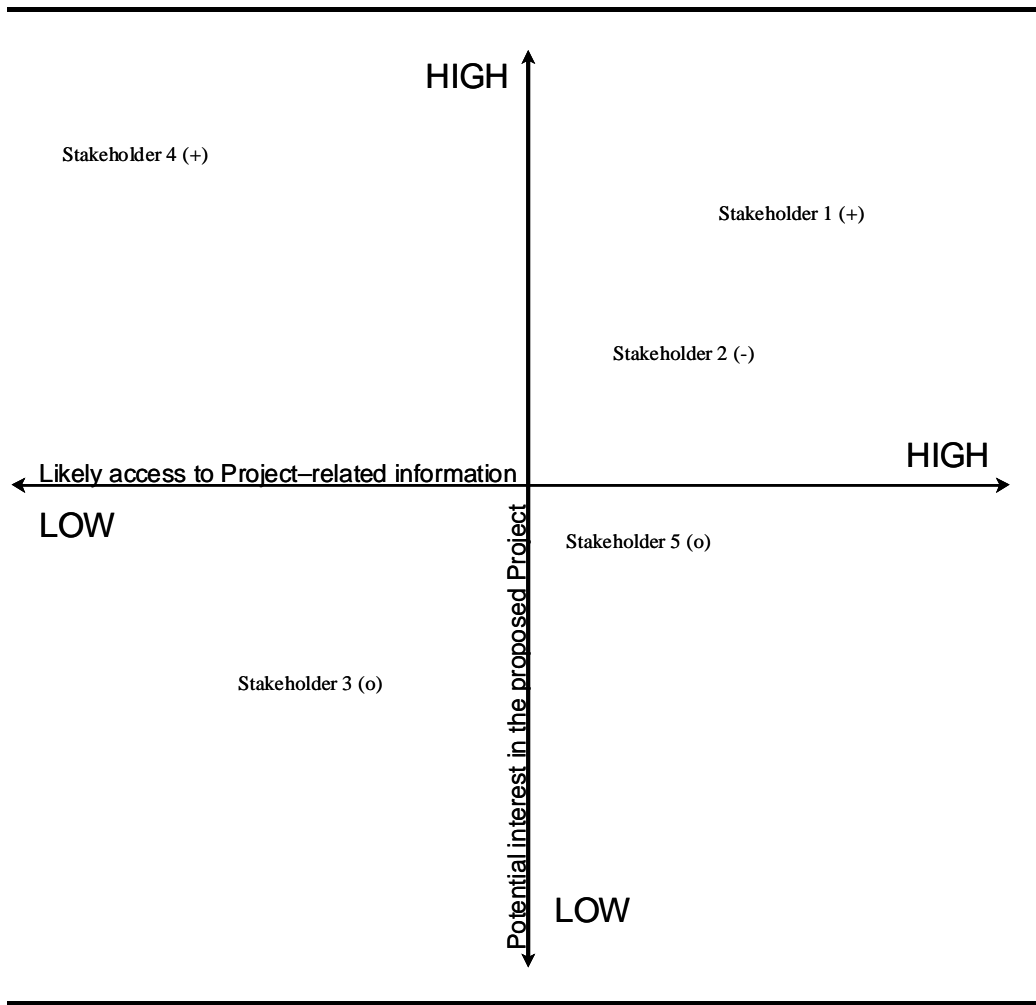
- the PCCP can be tailored to the interests and needs of different stakeholder groups; and
- available project resources for engagement activities can be prioritised appropriately.

3.11 Level of interest, access to information and stance (+, o, -) are combined using a matrix diagram. Positioning stakeholders in relative terms according to the broad criteria allows stakeholders to be positioned into the four quartiles of the matrix, as shown in *Figure 3.1*.

3.12 This mapping exercise will assist the study team in its planning of consultation activities. For example, those stakeholder positioned in the top, left quartile have a high interest in the proposed Project, but are likely to have limited access to Project-related information. It is therefore important that these stakeholders are engaged effectively during the ESA process.



Figure 3.1 Example Stakeholder Mapping



4.1 OVERVIEW AND SCHEDULE

4.1 *Figure 4.1* provides a preliminary schedule of PCCP activities that are to be undertaken in support of the RDP study program. As shown, the consultation activities will take place during three consecutive phases as follows:

- Phase 1 (Scoping);
- Phase 2 (Detailed Studies); and
- Phase 3 (ESA Finalisation and Disclosure).

4.2 A brief overview of each of these phases is provided in the following sections.

4.2 PHASE 1 CONSULTATION ACTIVITIES

4.2.1 Key Objectives

4.3 During Phase 1 (Scoping), the study team will carry out a series of consultations at the central and local level.

Key Objectives of Phase 1 Consultation:

- Introduce the proposed Project and inform stakeholders about the draft project design;
- Introduce the two study teams for the FS and ESA;
- Discuss the proposed ESA approach and methodologies;
- Outline the planned consultation activities;
- Discuss key issues identified during scoping that will likely be the focus of the ESA;
- Understand key sensitivities and concerns of stakeholders;
- Manage expectations and any misconceptions; and
- Develop formal working relationships with relevant authorities.

4.2.2 Central Level Public Meetings

4.4 Two-rounds of consultation meetings have already been held at the central-level. The first round was in 2007 when each of the beneficiaries parties, with assistance from the World Bank, held public meetings to invite comments on the RDP and its implications for the region. Comments received during these meetings fed into the design of the RDP study programme.



4.5 A second round of consultation meetings were held in July 2008, with FS and ESA consultants presenting and inviting comments on their study work plans and the proposed consultation and communications process. Questions and comments received during these meetings have fed into the design of the study programme and have been posted (with responses) on the World Bank website (www.worldbank.org/rds).

4.2.3 *Bilateral Consultation Meetings*

4.6 To compliment and follow up on issues raised at the central level public meetings, the FS and ESA teams will hold bilateral meetings in each of the beneficiary parties with key stakeholders who have been identified (through stakeholder mapping) as having a high interest in the Project and/or limited project-related information.

4.7 These meetings may comprise one-on-one meetings with individual stakeholders, or alternatively larger meetings to which several organisations are invited. Stakeholder groups currently identified for bilateral consultation meetings include:

- NGOs/research institutions;
- Regulatory/institutional organisations; and
- Business (industry/tourism).

4.8 Meetings currently planned during Phase 1 are shown in *Figure 4.1* (PCCP Activity Plan), with a provisional schedule presented in *Annex B*.

4.2.4 *Local Level Public Meeting*

4.9 Local level consultation will be conducted with communities, local businesses and NGOs that may be affected by the Project near the Red Sea, along the conveyance route, near the Dead Sea and along any water transmission routes. Potential water transmission line routes are unlikely to be known until Phase 2 of the study programme. As such, there will be no consultation with local level stakeholders along these routes during Phase 1.

4.10 The timing of local level meetings is presented in *Figure 4.1* (PCCP Activity Plan) with a provisional schedule presented in *Annex B*. Each meeting is planned to include the following:

- A short leaflet describing the proposed project will be prepared in the local language and sent out with an invitation letter 10 days in advance of the meeting;
- A neutral, accessible location will be chosen for each meeting, allowing participants to meet and speak freely;
- A short presentation will be made in the local language at the start of each meeting by the study team;



- Posters will be produced to support the presentation;
- Participants will be split into separate (male/female) groups for discussion with one male and one female facilitation team, to allow free discussion; and
- The proceedings will be recorded by a scribe, with all questions and answers posted on the RDS website.

4.2.5 *Other Engagement Activities*

4.11 In order to engage with the wider public at key intervals, the study team will use the following engagement mechanisms to keep them informed about the proposed project and to provide wider opportunity for comment. The following activities are planned during Phase 1:

- **Website:** The study team will make use of the dedicated RDP website hosted by the World Bank, uploading all relevant documents and engagement material; and
- **Email:** The study team has set up a dedicated email address for the study, which provides a forum for the public to send their comments about the proposed Project. All emails will be answered and the comments and replies kept on a regularly updated file on the website.

4.2.6 *Phase 1 Consultation Report*

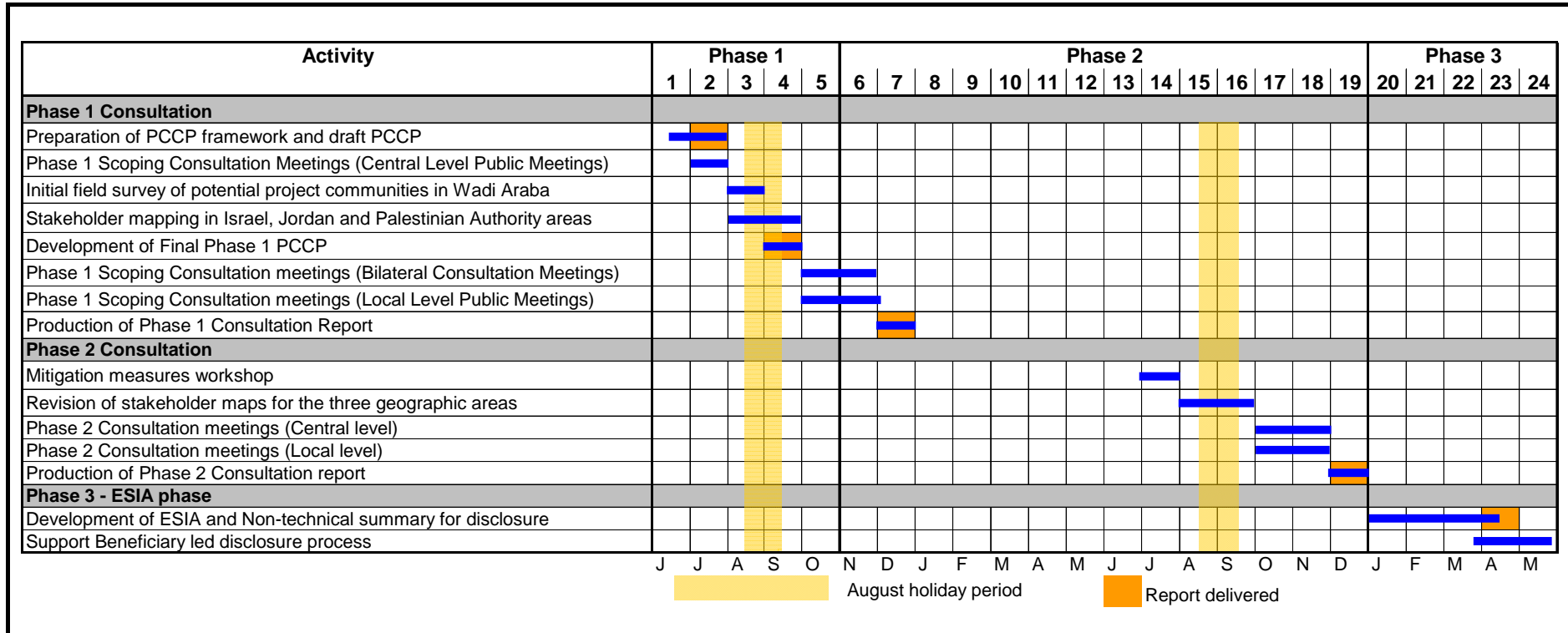
4.12 A report documenting all the engagement activities during Phase 1 will be produced in December 2008. This report will contain:

- Updated versions of the stakeholder lists;
- A consultation log of activities and an issues tracker, summarising issues raised during consultation; and
- A detailed engagement strategy for Phase 2.

4.13 The stakeholder lists and consultation tracking systems will be made available to the FS team on an ongoing basis so that they can add their updates, and use them to inform the RDP options analysis.



Figure 4.1 PCCP Activity Plan



4.14 During Phase 2 (Detailed Studies), the study team will carry out a series of consultations at the central and local level.

Key Objectives of Phase 2 Consultation:

- Introduce the proposed Project, where necessary;
- Continued management of local expectations, concerns and any misconceptions;
- Provide key stakeholders with information on the baseline for the assessment and obtain feedback;
- Inform stakeholders about the preferred option for the proposed Project;
- Focussed consultation on specific key issues and their proposed mitigation / enhancement measures to enable the study team to check the relative significance of potential impacts and obtain feedback on the proposed mitigation measures and alternatives;
- Enable affected communities to input into the Project design and management plans; and
- Update stakeholders on the activities and plan for engagement.

4.15 Prior to any Phase 2 engagement activities, the stakeholder lists and mapping will be reviewed and updated, to ensure that Phase 2 activities are tailored to the needs of different stakeholder groups.

4.16 The Phase 1 Consultation Report will outline the plan for consultation during Phase 2; and the Consultation Report produced at the end of this phase will describe the outcomes of the PCCP process to that point. This report will also provide a plan for activities during Phase 3 and detail how the results of consultation have been used to inform the detailed design and mitigation measures. An outline grievance mechanism for the proposed Project will also be presented at this stage.

Key Objectives of Phase 3 Consultation:

- Support the beneficiaries in undertaking public hearing(s) to disclose the Draft Final ESA and gain feedback on issues raised and mitigation and management measures proposed.

4.17 The beneficiary parties will have primary responsibility for consultation during the third (and final) phase of the study program (ESA Finalisation and Disclosure). In support, the study team will develop a draft ESA report as well as a non-technical executive summary for use during this phase. It is emphasised that the primary purpose of this phase of consultation is disclosure, and that consideration of design options and mitigation measures will have already been completed during the earlier phases of the study.



4.18 A Phase 3 Consultation Report will be produced towards the end of the phase, describing the final outcomes of the PCCP process undertaken for the study program, and outlining a proposed future program for consultation activities by the beneficiary parties following study completion.



Annex A

Provisional Stakeholder Listings

Table 1.1 Provisional Stakeholder List (Israel)

Category	Stakeholder
Government	
Central Government	Water Authority of Israel
	Ministry of Environment Protection
	Ministry of Agriculture
	Ministry of Infrastructure
	Ministry of Defence
	Ministry of Tourism
	Ministry of Interior
	Ministry of Labour
	National Parks Authority (NPA)
	Israel Antiquities Authority
Authorities or Municipalities	Eilat Municipality
	Southern Arava (Hevel Eilat) Regional Authority
	Central Arava (Arava Tihona) Regional Authority
	Tamar Regional Council of the Southern Dead Sea
	Megillot Regional Council of the Northern Dead Sea
	Port Authority in Eilat
	Nature Reserves Authority at the Dead Sea (Ein Gedi and Ein Fescha)
	Nature Reserves Authority in the Arava Region
	Mekorot Israel Water Utility
	Drainage Authorities project region
Communities/Landowners	
	Local Residents in Eilat
	Kibbutz Settlements in the Southern Arava
	Local communities in the project area
	Kibbutz and Moshav Settlements at the Dead Sea
	Land owners - public or private
Private Sector	
	Hotel Industry in Eilat
	Local Tourism in the Arava Region
	Nature Reserves in Eilat
	Hotel Industry in Dead Sea (Ein Bokeq)
	Cosmetics and medicinal Industry at the Dead Sea (e.g. Harva factory)
	Dead Sea Works
	Tourism and Cultural Sites at the Dead Sea (Masada, Ein Gedi)
NGOs/Research Institutions	
NGOs	Friends of the Earth ME (FOEME)
	Society for Protection of Nature in Israel (SPNI)
	Life and Environment
	Tzalul
Research Institutions	Geological Survey of Israel (GSI)
	Institute of Oceanographic & Limnological Research (IOLR)
	Tel Aviv University - Department of Geophysics and Planetary Sciences
	Dead Sea & Arava Institute for Environmental Studies
	Israeli Union for Environmental Defence (IUED)
	Agricultural R&D Stations in the Southern and Central Arava Kibbutz and Moshav Settlements (cooperative settlements) in the Central Arava
	The Inter-University Institute for Marine Science in Eilat
	Tel Aviv University - The Faculty of Exact Science

	The Hebrew University of Jerusalem – The Institute of Earth Sciences
	Dead Sea and the Arava Science Center
	The Geological Survey of Israel
	The Oceanographic and Limnological Research Ltd (IOLR)
IFIs and Donors	
	KKL/Jewish National Fund
Other (political parties, religious groups, media)	
	Israel Workers Association
Television media	Israeli Channel 1, 2, 10
	[WAI to advise on others]

Table 1.2 Provisional Stakeholder List (Jordan)

Category	Stakeholder
Government	
Central Government	Ministry of Water and Irrigation
	Jordan Valley Authority
	Water Authority of Jordan
	Ministry of Environment
	Ministry of Planning and International Cooperation
	Ministry of Agriculture
	Jordanian Armed Forces
	Ministry of Tourism and Antiquities
	Ministry of Municipal Affairs
	Ministry of Interior
	Ministry of Public Works and Housing
Local Government	Aqaba Special Economic Zone Authority
	Aqaba Development Corporation
	Local Municipalities in project area
	Local Governorates in project area (Aqaba, Tafila, Karak)
	Aqaba Water Company
	Jordanian Maritime Authority
	Aqaba Ports Corporation
Communities/Landowners	
	Farmers in Southern Ghors
	Local communities along conveyance route (names to be added)
	Local communities near desalination plant (names to be added)
	Local communities along transmission routes (names to be added)
Private Sector	
	Arab Potash Company (APC)
	Other Industrial entities at Dead Sea
	Dead Sea Hotels
	Ayla Development in Aqaba
	Jordanian Nuclear Agency
	King Hussein International Airport (Aqaba)
	Aqaba Thermal Power Plant
NGOs/Research Institutions	
	Marine Science Station (MSS)
	Royal Marine Ecological Diving Society
	Royal Society for the Conservation of Nature (RSCN)
	Friends of the Earth ME (Jordan)
	Jordan University: Centre for Strategic Studies
	Marine Science Station, Aqaba
	Jordan University: Water and Environment Research and Study Centre (WERSC)
	Jordan University of Science and Technology Queen Rania Al-

	Abdullah Centre for Environmental Science and Technology (QRACEST)
	Mutah University Prince Faisal Centre for Dead Sea, Environmental and Energy Research (PFC-DSEER)
	The Hashemite University Centre of Environmental Studies
	Balqa Applied University
	Royal Scientific Society
	Royal Jordanian Geographical Centre
	National Centre for Agricultural Research and Technology Transfer
	The Higher Council for Science Technology: Jordan Badia Research and Development Centre
	Jordan River Foundation
IFIs and Donors	
Other (political parties, religious groups, media)	
News Agencies	Petra News Agency
	Jordan Times
	[JVA to assist in providing contacts]

Table 1.3 Provisional Stakeholder List (Palestinian Authority)

Category	Stakeholder
Government	
Central Government	Palestinian Water Authority (PWA)
	Ministry of Agriculture
	Negotiations Support Unit
	Ministry of Planning
	Palestinian Investment Fund (PIF)
	Ministry of Labour
	Ministry of Finance
	Environmental Quality Authority (EQA)
	Ministry of Health
	Ministry of Local Government
	Ministry of Education
Local Government	Municipalities close to possible transmission route (to be determined)
	West Bank Water Department
	Other local water distribution utilities
	Governorates along transmission route (to be determined)
Communities/Landowners	
	Households and communities along pipeline route which may experience project-related impacts (positive or negative) - to be determined.
Private Sector	
	Chambers of Commerce
	Businessmen's Associations
	Engineers Union
NGOs/Research Institutions	
NGOs	EWASH forum (Environment Water, Sanitation and Hygiene)
	Environmental NGO Network (PENGON) (PHG to provide full list)
	Palestinian Hydrology Group for Water and Environmental Resources Development
	Applied Research Institute - Jerusalem
	Land Research Centre
	Palestinian Agricultural Relief Committees

	The Palestinian Association for Cultural Exchange
	The Society for Environmental Protection (Jenin)
	Palestinian Wildlife Society (Bethlehem)
	Palestinian Wastewater Engineers Group
	Water and Environmental Development Organisation (WEDO)
Research Institutions	Birzeit University - Institute of Water Studies
	Al Najah University: Water and Environment Studies Center
	Al Najah University: Earth Science and Seismic Engineering Center
	Bethlehem University: Water and Soil Environmental Research Unit
	Al Najah University: Energy Research Centre
	Al-Azhar University: Faculty of Science
	Al-Azhar University: Environmental Protection and Research Institute (EPRI) (Gaza)
	Applied Research Institute-Jerusalem (ARIJ) (Bethlehem)
	Hebron University: Engineering Dept
	Hebron Polytechnic
IFIs and Donors	
	World Bank
	JICA (Japan International Cooperation Agency)
	USAID
	GTZ
	European Commission
Other (political parties, religious groups, media)	
	The Independent Commission for Human Rights
Television media	Al Jazeera News Network
	El Arabia TV
	BBC Arabic
	MBC
Other media	Al Hayaa Newspaper
	Al Quds Newspaper
	Al Ayyam Newspaper

Annex B

Provisional Schedule for
Phase 1 Consultation
Meetings

Table 1.1 Provisional Consultation Schedule (Israel)

No	Type & Audience	Details	Location	Date
1.	Technical Briefing & Workshop – for MoEnv and 3 specific semi-governmental bodies.	A technical session, including presentation of project concept, outline of key environmental and social issues, and outline of study methodology. Presentations and most discussion will be in Hebrew. WAI to coordinate and organize this.	Tel Aviv	TBA by WAI
2.	Eilat Municipality and Eilat Regional Authority, marine environmental stakeholders, ports and tourism industry in Eilat, local communities.	A technical session, focused on the impacts to the GoA, including presentation of project concept, outline of key environmental and social issues related to GoA, and outline of Sub-Study A. Presentations and discussion will be in Hebrew.	Eilat	Mon 17 th Nov
3.	Local government and communities, agricultural groups in Central Arava.	This meeting will be in Hebrew, and the presentations will be in Hebrew. Refreshments to be provided.	Central Arava – TBA, perhaps Arava Research Station	Tue 18 th Nov
4.	Local government and communities in Dead Sea, northern Arava, including tourism entities in Dead Sea area.	This meeting will be in Hebrew, and the presentations will be in Hebrew. Refreshments to be provided.	Ein Bokek	Wed 19 th Nov

NB: We will also hold bilateral meetings in Israel on an ongoing basis with SIs, Dead Sea Works, and other technical groups. These will be written up as part of the Phase 2 Consultations Report.

Table 1.2 Provisional Consultation Schedule (Jordan)

No	Type & Audience	Details	Location	Date
1.	Technical Briefing & Workshop – for NGOs, Jordanian SIs, Ministry of Environment, other public sector entities.	A technical session, including presentation of project concept, outline of key environmental and social issues, and outline of study methodology. Split discussion into the 3 sub-study areas. Presentations and most discussion will be in English.	Amman	Mon 20 th Oct
2.	Aqaba Regional Authority, marine environmental stakeholders, ports and tourism industry in Aqaba, local communities.	A technical session, focused on the impacts to the GoA, including presentation of project concept, outline of key environmental and social issues related to GoA, and outline of Sub-Study A. Presentations and most discussion will be in English.	Aqaba	Tue 21 st Oct
3.	Local government and communities in Ghor Safi/Dead Sea area. Could include social development groups working in the area.	This meeting will be in Arabic, and the presentations will be in Arabic. Men and women will be separated for the discussion. Refreshments to be provided.	Ghor Safi	Wed 22 nd Oct
4.	Local government and communities in central and southern Wadi Araba. Could include social development groups working in the area.	This meeting will be in Arabic, and the presentations will be in Arabic. Men and women will be separated for the discussion. Refreshments to be provided.	Risha	Thu 23 rd Oct

Table 1.3 Provisional Consultation Schedule (Palestinian Authority)

No	Type & Audience	Details	Location	Date
1.	Technical Briefing & Workshop for environmental and water NGO network (EWASH) and local environmental NGO group, some local government agencies.	A technical session, including presentation of project concept, outline of key environmental and social issues, and outline of study methodology. Presentations and most discussion will be in English.	Ramallah	Sun 2 nd Nov
2.	Beir Zeit University – students and researchers (including SI group)	A technical session with presentation to students and others, including outline of project concept, outline of key environmental and social issues. Q&A on issues. PHG to lead, with ERM assistance. Followed by meeting with research teams, and informal discussion on issues, and briefing on research activities, and relevance.	Beir Zeit	Mon 3 rd Nov
3.	Al-Najah University – students and researchers (including SI group)	A technical session with presentation to students and others, including outline of project concept, outline of key environmental and social issues. Q&A on issues. PHG to lead, with ERM assistance. Followed by meeting with research teams, and informal discussion on issues, and briefing on research activities, and relevance.	Nablus	Tue 4 th Nov
4.	Bethlehem University – students and researchers (including SI group and ARIJ)	A technical session with presentation to students and others, including outline of project concept, outline of key environmental and social issues. Q&A on issues. PHG to lead, with ERM assistance. Followed by meeting with research teams, and informal discussion on issues, and briefing on research activities, and relevance.	Bethlehem	Wed 5 th Nov
5.	Hebron Universities (2 nr) – students and researchers (including SI group and)	A technical session with presentation to students and others, including outline of project concept, outline of key environmental and social issues. Q&A on issues. PHG to lead, with ERM assistance. Followed by meeting with research teams, and informal discussion on issues, and briefing on research activities, and relevance.	Hebron	Thu 6 th Nov

Annex C

Template for Consultation Log

C1 PCCP CONSULTATION LOG

C1.1 INTRODUCTION

This section presents an outline of the log that will be used to record and monitor PCCP activities for the study program. This log will be updated by both the FS and ESA study teams to ensure a comprehensive record of consultation activities.

C1.2 PCCP ACTIVITY LOG

Table 1.1 will be used to log the PCCP activities that are undertaken each month. It will act as a summary document and be supported with minutes and notes taken from each meeting or consultation event.

Table 1.1 Activity Log

Month	Engagement Activity	Activity Detail	Main Outcomes

C1.3 EVALUATION OF EFFECTIVENESS

The documenting of all consultation activities allows the study team to examine the extent to which activities were implemented in accordance with the PCCP.

Annex D

Template for Issue Tracking

Annex E

Provisional Questions and Answers (Q&As)

Red Dead Sea Water Conveyance Study Programme Questions & Answers

The Project

1. What is the Red Sea – Dead Sea project?

This is only a proposed project, to build a sea-water conveyance from the Gulf of Aqaba to the Dead Sea, in order to put water into the Dead Sea and reduce the ongoing drop in level. There is an option to construct a desalination plant and downstream pipelines to deliver desalinated freshwater to the region.

2. What is the purpose of the project?

Firstly – to stabilize the Dead Sea. There may be a secondary purpose – to provide desalinated freshwater for use in the region, but it has not been decided yet if either of these proposals will be implemented.

3. What is the pipeline route?

There are several possible pipeline routes which will be studied. No route has been selected yet, but the likely route will be from Aqaba to Ghor Fifa, on the Jordanian side of the border. If there is a desalination plant, it will probably be close to Ghor Fifa

4. Where will the intake be in the Gulf of Aqaba?

There are 3 proposed intake locations in the Gulf of Aqaba. These are being studied. The location decision will be based on both cost and environmental impact.

5. Where will the discharge pipeline in the Dead Sea be?

This will most likely be in the northern basin of the Dead Sea, but the location needs to be studied in detail, so that the impacts on the Dead Sea industries can be minimized. The location decision will be based on cost and environmental impact.

6. What will the final level of the Dead Sea be?

This is still being studied, but it is unlikely to be much higher than today's level, and may even be lower than today's level.

7. Who will get the freshwater?

No decision has yet been taken on whether there will be desalination or not. The final decision on who will benefit from the freshwater will not be taken until the economic feasibility has been studied in more detail. However, initial discussions indicated that most of the freshwater would be available to Jordan, with a smaller amount being made available to Israel and the Palestinian Authority.

8. How much freshwater will be provided?

This is currently being studied.

9. What about reports that the freshwater will be used to create a new city in the Wadi Araba/Arava?

There have been widely reported proposals from the Israeli private sector for the creation of a city in the desert, using the freshwater supplied by the water conveyance. However this is not part of the proposed project being studied by this study programme, and does not have the support of the Jordanian Government, the Palestinian Authority or the Water Authority of Israel.

The Study Programme

1. Why are there 2 studies?

The FS and ESA are being carried out by 2 separate teams, in accordance with the World Bank rules, to ensure independence of the ESA outputs. However, both teams will work closely together on data collection and analysis.

2. How long will the study take?

The Final Reports will be published in May 2010.

3. Will these be public?

Yes, and also some interim reports will be published on the World Bank Website www.worldbank.org/rds.

4. What about alternatives to the project?

The two studies (FS and ESA) will only be looking at the feasibility and environmental impacts of the proposed project discussed above. However, the World Bank will commission a 3rd independent study to look at Strategic Alternatives to this Project, including stabilizing the Dead Sea by delivery of water through the Jordan River. The Terms of Reference for this Study have not yet been published.

5. How can we comment on the proposed project?

There will be an extensive programme of consultations with i) government authorities, ii) NGOs and technical groups, iii) local communities on the pipeline routes, iv) other affected parties. This meeting is part of the first round of consultations. There will be a 2nd round of consultations in the 2nd half of 2009, when more project details will be known.

Comments and concerns can be emailed to rds@erm.com, or posted to RSDSC, PO Box 941400, Amman 11194, Jordan.