



Red Sea-Dead Sea Water Conveyance Study Environmental and Social Assessment

Inception Report

16 September 2008 (Revised)

www.erm.com



Inception Report (Revised)

Red Sea-Dead Sea Water Conveyance Study Environmental and Social Assessment

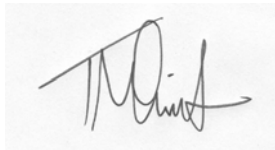
September 2008

Reference: 0084840

Prepared by: ERM in association with BRL
Ingenierie and EcoConsult

For and on behalf of
Environmental Resources Management

Approved by: Tim Smith



Signed:

Position: Project Director

Date: 17 September 2008

This report has been prepared by Environmental Resources Management the trading name of Environmental Resources Management Limited, with all reasonable skill, care and diligence within the terms of the Contract with the client, incorporating our General Terms and Conditions of Business and taking account of the resources devoted to it by agreement with the client.

We disclaim any responsibility to the client and others in respect of any matters outside the scope of the above.

This report is confidential to the client and we accept no responsibility of whatsoever nature to third parties to whom this report, or any part thereof, is made known. Any such party relies on the report at their own risk.

TABLE OF CONTENTS

	<i>TABLE OF ABBREVIATIONS</i>	2
1	<i>INTRODUCTION</i>	3
2	<i>PROJECT APPROACH</i>	4
2.1	<i>OVERALL APPROACH</i>	4
2.2	<i>APPROACH TO WORKING WITH THE SUB-STUDIES</i>	4
2.3	<i>APPROACH TO SCOPING</i>	5
2.4	<i>APPROACH TO OPTIONS ASSESSMENT</i>	5
2.5	<i>APPROACH TO CONSULTATIONS</i>	6
2.6	<i>CONSULTATIONS TO DATE</i>	7
3	<i>ISSUES TO BE ADDRESSED</i>	8
3.1	<i>CONTRACTING OF SUB-STUDIES</i>	8
3.2	<i>ANALYSIS OF STRATEGIC ALTERNATIVES</i>	10
4	<i>WORKPLAN</i>	11
4.1	<i>WORKPLAN OVERVIEW</i>	11
4.2	<i>PROGRESS TO DATE</i>	11
4.3	<i>SUMMARY PROGRESS AND PLANNING TABLES</i>	12
4.4	<i>UPCOMING DATES & EVENTS</i>	15
5	<i>RESOURCE PLAN</i>	16
5.1	<i>STAFFING SCHEDULE & LOE ESTIMATES</i>	16
5.2	<i>STAFF MISSION DATES</i>	16
6	<i>SCHEDULE OF DELIVERABLES AND INVOICES</i>	19
7	<i>ANNEX I -WORKPLAN</i>	20
8	<i>ANNEX II - SCOPES OF WORK</i>	22
8.1	<i>POLICY, LEGAL AND ADMINISTRATIVE FRAMEWORK</i>	22
8.2	<i>PHASE I COMMUNITY CONSULTATIONS IN JORDAN OR ISRAEL</i>	23
8.3	<i>ARCHAEOLOGICAL DATA COLLECTION AND REVIEW</i>	24



TABLE OF ABBREVIATIONS

DSW	Dead Sea Works
ERM	Environmental Resource Management
ESA	Environmental and Social Assessment
ESMP	Environmental and Social Management Plan
FoEME	Friends of Earth Middle East
FS	Feasibility Study
GSI	Geological Survey of Israel
HIV/ AIDS	Human Immunodeficiency Virus / Acquired Immunodeficiency Syndrome
IOLR	Israel Oceanographic and Limnological Research
IUI	Inter University Institute (for Marine Science at Eilat)
JUST	Jordan University of Science and Technology
JOHUD	Jordan Hashemite Fund for Human Development
MSP	Microsoft Project
PCC	Public Communications and Consultations
RSDSC	Red Sea Dead Sea Water Conveyance
SIs	Specialized Institutions
ToR	Terms of Reference
WAI	Water Authority of Israel



1.1 This Inception Report describes the activities carried out during the first 8 weeks of this assignment, and our approach and comments on implementing the assignment. A revised Workplan for the study is provided and discussed, together with a resource plan. Additionally, some specific issues that we feel need to be addressed in order to facilitate progress are also set out.

1.2 The proposed Red Sea-Dead Sea Water Conveyance (RSDSC) is an important and high profile initiative, to be undertaken by 3 beneficiary parties whose citizens sometimes have different interests, and who often have tense political relationships. The location, scope and political context of the initiative will ensure that it has a high profile amongst stakeholders, some of whom have already demonstrated an interest in lobbying for and against certain approaches and solutions. Apart from the complex technical issues which need to be disentangled and described, an open and serious engagement with stakeholders will be essential if the study program is to receive the trust and support necessary from the various players in the 3 jurisdictions.

1.3 The Environmental and Social Assessment (ESA) Team will engage seriously with the Feasibility Study (FS) Team and other technical parties to ensure that the issues are addressed as thoroughly and as competently as possible in an open and collaborative manner, given the constraints of funding and timing.

1.4 Progress Report number 3 was submitted on 28th August, following the original submission of this document.



2.1 OVERALL APPROACH

2.1 In broad terms, our approach will be to utilise and build upon the existing technical capacity and experience of the entities in the region (including the SIs) to describe and address the technical issues, and provide the analysis and recommendations required for the study.

2.2 Following the approach set out in the study program Terms of Reference (ToR), we will work with the FS Team who will commission the necessary Sub-Studies defined in the ToR and provide the data and technical analysis on the various issues. Although we will conduct our own due diligence on the Sub-Studies, we will work on the understanding that the outputs provided by the FS Team will provide the necessary level of detail and analysis at the project level for incorporation in the final ESA.

2.3 The added value of the ESA work will be to critique, then synthesise the technical output from the FS team into a comprehensive Assessment which provides recommendations on how the various environmental risks can be mitigated. It is also recognised that particular contributions will be made by the ESA Team towards describing the impacts on cultural heritage and archaeology, leading the assistance to the beneficiaries on the Public Communications and Consultations (PCC) activities, and developing the final Environmental and Social Management Plan (ESMP), incorporating both Resettlement and Indigenous Peoples action plans and frameworks as may be required. Some of these specific issues are outlined in more detail below.

2.2 APPROACH TO WORKING WITH THE SUB-STUDIES

2.4 The ToR is divided into a Feasibility Study (FS) and an ESA Study, where most of the data and analysis for the ESA study is provided by the 4 Sub-Studies contracted by the FS. Given this context, our overall approach is to work closely with the FS team to define the issues and design the TORs for the 4 Sub-Studies, and to communicate closely with the Sub-Study teams during their assessments. We will work collaboratively with the FS and the Sub-Studies to review their output.

2.5 The output of the Sub-Studies – the draft reports due in month 10, and the final reports in month 16 – will be used in our impact assessment. We will work on the understanding that their output will include baseline identification, impact identification and assessment, and recommendation of mitigation measures. We have allowed for a small amount of follow up with



the Sub-Study teams on clarification and follow up on issues of particular relevance to the ESA, during the latter part of Phase II.

2.6 So far, our working relationship with the FS team has been very positive, and our Workplans have been harmonised to demonstrate where inputs and outputs are required by each party. The close proximity of the 2 project offices in Amman will be an important enabling feature of the working arrangements.

2.3 *APPROACH TO SCOPING*

2.7 We have adopted a two phase approach of i) Scoping and ii) Assessment both for our study and (as suggested by the FS Team) for the design of the Sub-Studies. In accordance with basic ESA requirements, we intend to fully scope the issues using a variety of means, by:

- i. Drawing feedback from the Phase I Public Consultations Programme, which includes consultations at a number of levels with stakeholders and affected groups;
- ii. Assisting the FS Team in defining the information needed from the Sub-Study specialists in Phase I - effectively a means of technically scoping the issues within each of the Sub-Study areas; and
- iii. Conducting our own due diligence research on the available data and studies on the key issues, utilizing our own technical expertise.

2.8 We will deliver a Scoping Report by 18th December 2008, which highlights our understanding of the issues and their relative importance, and an agreed plan for assessment of each issue.

2.4 *APPROACH TO OPTIONS ASSESSMENT*

2.9 At the suggestion of the FS Team who are required to produce an Options Evaluation Report by 18th December, we have agreed to take the information available on the various options and alternatives - both information on the various engineering and location options, and information on the existing environment and likely environmental and social impacts - and produce an alternatives analysis which will complement the Options Analysis Report, and which will also be available on 18th December, along with the Scoping Report. We stress that this analysis will be based on the data and information available at the time - ie in advance of any detailed Sub-Study work - and may be a relative and qualitative assessment only.



2.10 Some of the important alternatives (eg the location and depth of intake in the Gulf of Aqaba, and the location and depth of the outfall in the Dead Sea) will be an important part of the ongoing assessment work in the Sub-Studies, and final quantitative data on these will not be available by the date of the Scoping Report. Qualitative judgements will therefore be made, where applicable, and a list of issues which need further investigation will be set out.

2.5

APPROACH TO CONSULTATIONS

2.11 The social and political aspects of this proposed project are of high importance. This will be reflected in our outline Public Consultations and Communications Plan (PCCP) to be delivered on 18th September 2008.

2.12 Consultations will be carried out in 2 phases:

- i The scoping phase, during which time the project proposals will be explained and comments and concerns invited, and
- ii The design phase, during which time the FS team's plans to address the concerns will be presented and consulted upon.

2.13 However, the consultations process should not only inform the study programs. It is imperative that the public and key stakeholders in all 3 jurisdictions are well informed about the potential project and the progress of the study program, in an open and transparent manner.

2.14 Given the history of the region and the proposed project itself, there is a need to provide up-front data and design plans, in order to dispel rumours and discourage mis-informed speculation. Apart from the technical issues which need to be solved, it is important that the non-technical implications of the proposed project are dealt with and addressed, on both local and international levels. Because of this, a robust PCCP is being developed, with significant effort being deployed in all 3 jurisdictions.

2.15 Input from the FS Team – in the form of the provision and occasional assistance with the presentation of design data, drawings, maps, analysis, justifications, etc – will be necessary for a successful PCCP to be implemented, and discussions have already begun on this.

2.16 However, Public Consultations and Communications are ultimately the responsibility of the 3 Beneficiary Parties, and must be owned by them. The Consultants can assist, but the ultimate success of this aspect of the study will depend on the engagement and cooperation of the Beneficiary Parties in the delivery of the PCCP over the course of the study program.



2.17 More details on the draft PCCP will be given in the outline to be delivered on 23rd July. Because of the importance of stakeholder buy-in, we have elected to present the key processes and approaches to be adopted in the PCCP at the Initial Public Meetings, and to consult on them.

2.6

CONSULTATIONS TO DATE

2.18 Meetings and consultations were held during the inception period with a number of entities and individuals in the 3 Beneficiary Party areas. In addition, close communications were maintained with the FS Team regarding the feedback from additional bi-lateral meetings held by them. A summary of meetings and discussions held up to the 20th July is given below.

Jordan

- a. Jordan Valley Authority
- b. Royal Society for the Conservation of Nature
- c. Jordan Hashemite Fund for Human Development (JOHUD)
- d. Local environmental consultants from ECO Consult
- e. Site Visit to Intake Sites and Conveyance Route
- f. Marine Science Station
- g. Ayla Tourism Development
- h. Friends of the Earth Middle East
- i. Jordanian archaeological consultants
- j. Coyne & Bellier Economist and Environmental Economist
- k. Coyne & Bellier Marine Biologist and Hydrodynamic Modeller

Palestinian Authority

- Palestinian Water Authority
- Palestinian Hydrology Group

Israel

- Water Authority of Israel
- Geological Survey of Israel
- IUI/IOLR
- Dead Sea and Arava Institute
- AVIV Consulting

2.19 We are aware that there was an initial focus on the Jordanian side of the border. Since these meetings were held, we have instigated a series of bi-lateral meetings with the Beneficiary Parties and others. We have designated the period up until the end November 2008 as a period of ongoing consultations and scoping, where bi-lateral meetings will be held with a number of institutions and individuals in all 3 beneficiary party areas in order to inform the study. The results of these will be written up in the Phase I Consultations Report, and fed into the Scoping Report, to be delivered by 18th December 2008.



3.1 The first 8 weeks of the assignment have been focused on mobilization, meeting the stakeholders and understanding the issues in order to develop a more detailed and effective Workplan. During this process, some issues have arisen which need to be addressed during the study.

3.1

CONTRACTING OF SUB-STUDIES

3.2 The design of the ToR has been mentioned above, where the ESA needs to use results from Sub-Studies that will in turn depend on work commissioned from local experts/SIs, and funded by the FS. We are working closely with the FS team to determine the scope of these studies and to prepare detailed ToR. It has been agreed with the FS team, in principle, that when the studies commence, management and technical specialists from the ESA team will participate in reviewing draft reports and in progress meetings with the Sub-Study teams.

3.3 We understand that there are difficulties in agreeing the scope of work and levels of input with some of the SIs, and that this has delayed the start of the initial data gathering and scoping phase of the various Sub-Studies. The ESA output and timetable clearly depends on the resolution of these issues as quickly as possible.

3.4 If the Sub-Study results are delayed, the ESA will be delayed commensurately. The areas where expertise is limited to a few SIs relate mainly to the ecological and limnological properties of the Red Sea and the Dead Sea. These are key issues that are central to a sound ESA that can serve as a decision-making instrument.

3.5 If the FS team produces Sub-Studies without being able to draw upon the specialist expertise of key SIs, the ESA will be able to assess impacts but the necessary caveats and level of uncertainty will be wider, depending on the detail of the studies and confidence with which the results can be presented. It is, however, possible that acceptably robust conclusions can be drawn from the existing data, provided that the FS and ESA experts have access to all existing research material, **including the unpublished findings of the specialised SIs.**

3.6 Looking at the studies individually we conclude the following:

- a. Sub-study A – some analysis could be done with existing data/assumptions and other modellers. This is not technically onerous but it would be expensive and time consuming. Information could probably



be developed in sufficient detail to support feasibility (particularly on marine ecology) but not detailed design, so the ESMP would necessarily be at a conceptual level.

- b. Sub-study B would probably not be affected since there is good understanding of the hydrology/hydrogeology and ecology of the valley amongst multiple sources including some that have already expressed a willingness to support the study.
- c. Sub-study C presents the main difficulty. There is some expertise in JUST, but it is doubtful that it would be of sufficient depth and detail to fully address impacts. The only real way forward would be to do a qualitative study through DSW. Almost certainly there would be a need to do post ESA work in support of detailed design, and so this approach effectively only introduces further delay.
- d. Sub-study D - the only difficulty could be in the study of seismic conditions, but again there are many regional sources of knowledge on this issue that should be sufficient for the ESA

3.7 It would be possible is to set these studies (both the FS and ESA) in the wider context of the schedule of work which needs to be done before construction would be able to begin, assuming the project were to go ahead. There are likely to be a number of steps subsequent to this 2 year study program – including the resolution of any outstanding technical issues, compensation discussions with affected parties (if any), detailed design, fund raising, political and technical agreements between the beneficiaries, etc. It may be useful to set the longer research programme envisaged by some SIs as required for the study, within this overall picture. Then we could itemize which elements can be carried out during the 2 year study, and which elements need more time and resources, and could conceivably be carried out subsequent to the 2 year studies, but before the detailed design was completed.

3.8 In any event, uncertainly in the assessment, whether caused by non-participation of key specialists or simply as a consequence of imperfect knowledge, may require that further studies and monitoring be undertaken. Such work might extend up to and beyond the possible construction of the conveyance.

3.9 These risks will be further managed by close coordination between the ESA and FS Teams, which is already taking place, and by continuous and open communication with all stakeholders in the process, in particular the Sub-Studies Teams.



3.10 The arrangement for dealing with analysis of macro-level Strategic Alternatives through an independent study separate from the ESA is acknowledged, although the ESA team would request further discussion in due course about how the results of the third party study are to be linked with the ESA findings. For example, we assume that the ESA consultants will be required to simply cross reference and summarise the findings, however would appreciate confirmation of this approach in due course. Moreover, we also assume that any consultation and disclosure process required for the Strategic Alternatives study would be incorporated within the specific terms of reference for that study.

3.11 We would request further discussion with the Bank about this issue, once the ToR for the Strategic Alternatives study are available.



4.1

WORKPLAN OVERVIEW

4.1 Our revised Workplan is provided in Annex I. The Workplan is grouped into 7 tasks; Project Management, Inception, Public Consultation and Disclosure Planning, Scoping, Preparatory Studies, Impact Assessment and Mitigation, and Reporting. However, the Workplan will be a dynamic document and will be revised and updated at various stages throughout the project. The first major updating will occur at the end of the Scoping Phase, when more details on the issues to be examined and the methodology for such examination are known.

4.2

PROGRESS TO DATE

4.2 The activities carried out to date are listed in detail below in the completed and planned activity charts. The following is an overview of the key efforts to date;

1. Initial meetings with the Bank, beneficiaries, and the FS team.
2. Initial research and meetings with local consultants and stakeholders regarding data collection and the state of existing knowledge (archaeology, socio-economics, terrestrial and marine ecology....)
3. Expert visit to the GSI, DSW and IOLR in conjunction with FS Team, to scope out the requirements for the Sub-Studies
4. Working with the FS Team on developing ToRs for the Sub-Studies (Phase I) on data collection and scoping of the issues.
5. PCCP – expert visit, coordination with the FS Team, local consultants, and stakeholders on the draft PCCP outline, and identification and design of work required on stakeholder analysis, baseline data collection, and Phase I consultations.
6. Development of internal scopes of work for archaeological data collection, legal and institutional review, initial consultations, stakeholder analysis – see Annex II.
7. Preparations for the Initial Public Stakeholder Meetings in July.
8. Initial scoping of environmental issues of concern.



4.3

SUMMARY PROGRESS AND PLANNING TABLES

4.3 In the following tables, the activities carried out during the first 8 weeks of the Study are highlighted, along with activities which are planned for the remainder of Phase 1 ending in October 2008. Under each sub-heading, progress during the reporting period (25th May – 20th July) is recorded in normal font. Actions planned for the planning period (20th June – 30th October) are listed in *italics*.

4.3.1 Project Management

1 Project Management Activity	Progress (25th May – 20th July) <i>Pending Actions (20th July to 30th October)</i>
1.1 Liaison with Independent Panel of Experts	None
1.2 Liaison with Technical Steering Committee	<i>Meeting scheduled for 31st July</i>
1.3 Planning & Coordination Meetings (World Bank, FS Team)	Introductory Meetings with FS Team 28 th May Initial meeting with World Bank (A McPhail) 29 th June Coordination meeting with World Bank and FS Team, 30 th June Subsequent meetings and coordination with FS Team on an ongoing basis. <i>Other meetings to be scheduled as necessary to produce outputs discussed below</i>
1.4 Progress Reports	Progress Report #1 delivered 26 th June Inception Report delivered 20 th July <i>Progress Report #3 due 9th October</i>

4.3.2

Inception

2 Inception Activity	Progress (25th May – 20th July) <i>Pending Actions (20th July to 30th October)</i>
2.1 Mobilisation and Project Familiarisation	Meeting with Jordanian Water Authority 29 th May Meeting with Israeli Water Authority (Ministry of Infrastructure) 1 st June Meeting with Palestinian Authority 2 nd June Meetings with SIs <ul style="list-style-type: none"> • 2nd June GSI • 2nd June Arava Institute • 3rd June Tel Aviv University • 3rd June ILOR • 3rd June WAI • 3rd June FoEME • 4th June Aviv <i>Other meetings with interested parties to be held on an ongoing basis</i>



2.2 ESA Inception Report	Delivered 20 th July
2.3 Input to Sub-Study Proposals	<p>Reviewing reports, data and proposals from SIs. Provided input to FS Team on Phase I TORs. Field Visit from Physical Oceanographer Ian Hanson (Marine Biologist took sick day before visit) along with FS Team 29th June – 6th July. De-briefing and discussions with FS Team following visit. Planning for Sub-Study Design Workshop in September, with FS Team.</p> <p><i>Input to Phase II TORs due before 25th September</i></p>
2.4 Prepare GIS Mapping System	<p>Discussions held with GIS resource, and FS Team regarding mapping. Initial discussions held with map sources regarding costs and availability.</p>
2.5 Prepare ESA Outline	<i>Due 30th October</i>

4.3.3

Public Consultation and Disclosure Planning

3 Public Consultation and Disclosure Planning Activities	<p>Progress (25th May – 20th July) <i>Pending Actions (20th July to 30th October)</i></p>
3.1 Development of Public Consultations and Communications Plan	<p>Visit of Social Assessment/PCCP Specialist (Tunde Morakinyo) to Amman 17th – 20th June</p> <p>Meetings held with FS Team</p> <p>Developed draft PCCP outline and consulted with local consultations experts and beneficiaries.</p> <p>Developed TORs for i) stakeholder mapping, ii) baseline survey and preparations, iii) social assessment</p> <p><i>Additional consultations with beneficiaries on PCCP in September</i></p> <p><i>Outline framework due 23rd July</i></p> <p><i>Draft PCCP due 18th September</i></p>
3.2 Attend Launch/Initial Consultations	<p>Coordinating with Beneficiaries and FS Team on these meetings, announcements, logistics, etc</p> <p><i>Due 27th July (Jordan), 29th July (Palestinian Authority), 30th July (Israel)</i></p>
3.3 Assist PMU with Public Consultations on ToR, Program and ESA Scope	<p>Drafted ToR for first phase consultations.</p> <p><i>Phase I Consultations to be held September – November. Report due on 18th December</i></p>
3.4 Joint Phase 1 Public Consultation Report	
3.5 Input to Implementation of Public Consultation Plan	See 3.3 and 3.6
3.6 Assist PMU with Public	



Consultations on Design and Mitigation Elements	<i>These Consultations are planned for September – November 2009</i>
3.7 Joint Phase 2 Public Consultation Report	<i>Report due on 21st December 2009</i>
3.8 Joint Phase 3 Public Consultation Report	<i>Report due on 31st May 2010</i>
3.9 PCCP for next Stage	<i>Due on 31st May 2010</i>

4.3.4

Scoping

4. Scoping Activities	Progress (25th May – 20th July) Pending Actions (20th July to 30th October)
4.1 Prepare initial Project Description with alternatives	<i>Will consult with FS Team in November.</i>
4.2 Collate Existing Environmental & Social Information	Begun updating lists of specialist expertise, meetings and experts, and reviewing data - ongoing <i>Due to receive inputs from stakeholder consultations September – November, and incorporate concerns into Scoping Report</i> TOR designed for social baseline data collection <i>Due to commission social baseline data collection in August</i>
4.3 Draft Scoping Report (includes Preliminary Appraisal of Project Alternatives)	None <i>Due 18th December</i>

4.3.5

Preparatory Studies

4.4 The activities that will contribute to the baseline, impact assessment etc, but will be started before the Sub-Studies are ready, have been grouped together as “preparatory studies”.

5. Preparatory Studies and Related Activities	Progress (25th May – 20th July) Pending Actions (20th July to 30th October)
5.1 Refine Project Description with alternatives	<i>Will take input from FS Team. To be completed and incorporated within Draft Scoping Report (due 18th December)</i>
5.2 Overview of Legal, Institutional and Policy Framework	TOR developed for legal review. <i>To commission studies on i) Outline Framework for Jordan, ii) Outline Framework for Israel, iii) Outline Framework for Palestinian Authority</i>
5.3 Undertake Supplementary Field Studies	Discussions held with archaeological team TOR for data collection designed. <i>To commission Archaeological Study in August</i> <i>To commission study on social and economic background in August</i> <i>To commission stakeholder identification and analysis survey in</i>



5.4 Archaeological Study	<i>August</i> Held discussions with archaeological experts. Drafted TOR for data collection and scoping assessment.
5.5 Assist in steering and technical support to Sub-Studies	Contribution to Phase I Sub-Studies TOR Discussions with FS Team on TORs
	<i>Review and comment on Sub-Study Phase I Reports</i> <i>Brainstorming workshop with FS Team to design Phase II Sub-Studies</i>

4.4

UPCOMING DATES & EVENTS

4.5 Distilling key upcoming events and dates from the Workplan, upcoming milestones until January include;

Event	Due date
Submission of Outline Joint Public Consultations and Communication Plan (PCCP)	23/07/08
Public Stakeholder Meeting - Jordan	27/07/08
Public Stakeholder Meeting - Palestinian Authority	29/07/08
Public Stakeholder Meeting - Israel	30/07/08
Technical Steering Committee Meeting	31/07/08
Progress Report No 2	28/08/08
Submission of Draft Public Consultations and Communications Plan (PCCP)	18/09/08
Input into Work Studies Program (by FS Team)	25/09/08
Progress Report No 3	03/10/08
Annotated Outline for ESA Report	30/10/08
Technical Steering Committee Meeting	17/11/08
Progress Report No 4	20/11/08
Scoping and Outline Assessment of Options Report	18/12/08
Progress Report No 5	08/01/09
Technical Steering Committee Meeting	12/01/09



5 *RESOURCE PLAN*

5.1 *STAFFING SCHEDULE & LOE ESTIMATES*

5.1 The following table illustrates our proposed staff schedule. This remains provisional in terms of both schedule and inputs required, since the full picture of what issues need to be addressed and what resources each issue will require are heavily dependent on further discussions to be held with stakeholders and experts during the scoping process.

5.2 A revised staff schedule will be prepared following the Scoping Report.

5.2 *STAFF MISSION DATES*

5.3 The above staff schedule shows the timing of the projected inputs from the various resources. One key involvement of technical experts will be during September, when the detailed design of the Sub-Studies will be conducted with the FS Team. Other staff will input from time to time as need arises. The Communications and Consultations Specialist will assist with the stakeholder and consultation work in September – November 2008, and also in the latter part of 2009. Other technical involvement will be particularly heavy during 2009, during the assessment and mitigation stages, as shown in the plan.



Staffing Schedule

Name of staff	Position	J	J	A	S	O	N	D	J	F	M	A	M	J	J	A	S	O	N	D	J	F	M	A	M	Staff-month input		
																											Hme	Fld
Core Team																												
Raymond Colley	Team Leader																									1.60	14.4	16.0
Steve McIlwaine	Deputy Team Leader																									8.80	2.20	11.0
Eric Dutrieux	Marine Biology																									1.40	2.10	3.50
Ian Hansen	Hydrology/Modelling																									1.40	2.10	3.50
Isabelle Ruben	Archaeology/Heritage																									1.20	1.80	3.00
A. Morakinyo	Communications/Consultation																									1.80	2.70	4.50
Neena Singh	Resettlement/Indigenous Peoples																									1.40	2.10	3.50
Ghazi Qussous	Cartography/GIS																									4.00	0.00	4.00
Additional Experts																												
Khaled Nassar	Terrestrial ecology																									1.50	1.00	2.50
Yves Barthelemy	Hydrology/Hydrogeology																									1.50	1.00	2.50
E. Chateauinois	Water quality/limnology																									1.50	1.00	2.50
Sébastien Chazot	Meteorology/climate change																									0.90	0.60	1.50
Ra'ed Daoud	Institutional/legal (environmental)																									1.20	0.30	1.50
Fady Hamade	Socio-economics																									1.50	0.00	1.50
Bernard Bousquet	Tourism and landscape																									0.90	0.60	1.50
François Boillot	Health impact specialist (HIV/AIDS)																									0.90	0.60	1.50
Huw Jones	Occupational health and safety																									1.50	0.00	1.50
Tim Geyer	Quantitative risk assessment																									2.00	0.00	2.00
Jacques Cambon	Process specialist																									1.00	0.00	1.00
E. van der Meer	Archaeological survey coordinator																									3.00	3.00	6.00
To be nominated	Social survey coordinator																									1.20	1.80	3.00
see below	Senior Strategic Advisors																									0.90	0.60	1.50
Various (junior)	Social/resettlement survey support																									1.20	4.80	6.00

6.1 The following is a summary of the schedule for the main study deliverables.

Deliverable	Due date
Inception Report	20/07/08
Public Communications and Consultations Plan (PCCP)	18/07/08
Annotated Outline of Environmental and Social Assessment (ESA) Report	30/10/08
Joint Phase I Public Consultations Report	18/12/08
Scoping and Options Analysis Report	18/12/08
Initial Assessment Report	28/05/10
Preliminary Draft ESA Report and Environmental and Social Management Plan (ESMP)	15/12/09
Joint Phase II Public Consultations Report	21/12/09
Final Draft ESA Report and ESMP	31/01/10
Final ESA Report and ESMP	31/05/10
Joint Phase III Consultations Report	31/05/10

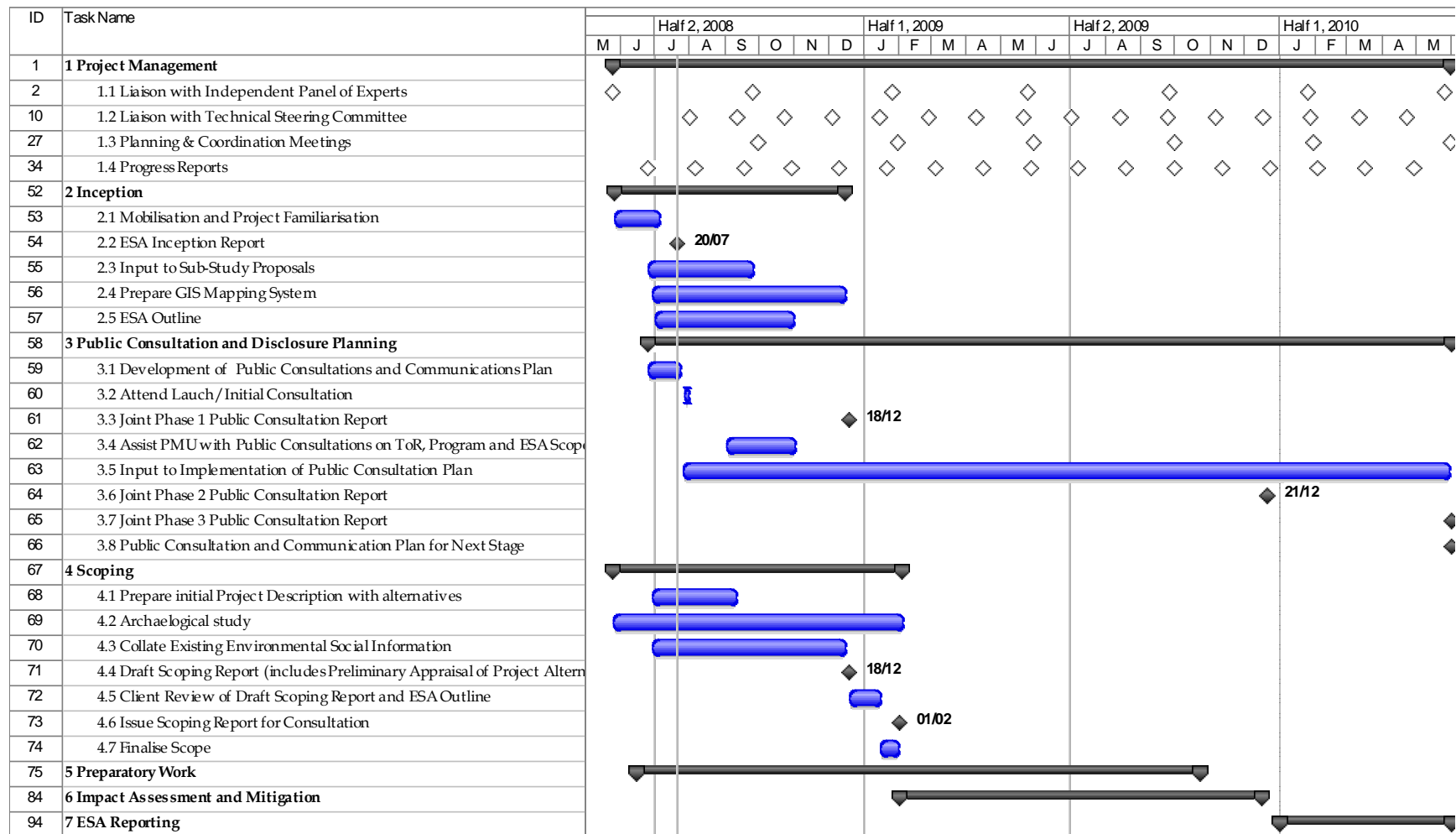
6.2 It is recognised that beneficiaries are interested to see whether the study can be completed more quickly. The study is, however, already compressed into a very narrow window of time. The technical work cannot realistically be completed faster. Opportunities for reducing the duration of the ESA therefore lie in the periods in which we are waiting for deliverables or comments from others. If, for example, the Sub-Studies were to be completed early, our initial prediction of impacts, and all subsequent steps could be moved up by a corresponding amount of time. It may also be possible to reduce the time allowed for the Bank and beneficiaries to make comments and for the team to respond to comments. Up to one month could thus be saved from phase three, depending on the nature of comments and the scale of inputs needed to incorporate them.

6.3 The following table sets out the ESA contract payment schedule, based on the due date for the various deliverables.

Inv #	Milestone	Submitted/ due date	Payment date
1	10% advance upon contract signature	23/06/08	25/07/08
2	15% upon acceptance of Inception Report	20/07/08	
3	5% upon acceptance of Annotated ESA Outline	30/10/08	
4	20% upon acceptance of Initial Assessment Report	28/05/09	
5	15% upon acceptance of Preliminary Draft ESA Report	15/12/09	
6	25% upon acceptance of Draft ESA Report	31/01/10	
7	10% upon acceptance of Final ESA Report	31/05/10	



7 ANNEX I -WORKPLAN



The following are 3 initial scopes of work for key experts developed for internal use within the ESA Team.

8.1 *POLICY, LEGAL AND ADMINISTRATIVE FRAMEWORK*

8.1.1 *Objective*

The overall objective of the assignment is provide an overview of the policy, legal and administrative framework in Israel/Jordan/ Palestinian Authority, under which the environmental and social aspects of the proposed project would be evaluated and implemented. Note that the Conveyance line will probably be on Jordanian territory between the Gulf of Aqaba and the Desalination Plant (in Jordan, close to Fifa, south of the Dead Sea), but the freshwater transmission pipeline(s) will pass through Israeli and Palestinian Authority territory to a final destination to be decided – possibly in Jerusalem or Hebron.

8.1.2 *Activities and outputs*

The expert will;

- Prepare a review of applicable regulations and standards governing environmental permitting and/or clearance, environmental impact assessment, protection of sensitive areas, protection of endangered species, protection of groundwater, land use controls, and social issues such as planning approvals, involuntary resettlement and land acquisition, etc.
- List the various Government (central and local) institutions which are relevant to environmental permitting, planning, management, protection or planning and/or social issues, and explain their role and responsibility.
- List the various local authorities (municipalities, regional administrations, etc) through which the project pipeline will pass. Note where areas are under the control of other entities (eg Israeli military, Palestinian Authority, etc). Include clear, coloured figure(s) or map(s) of the various jurisdiction boundaries.
- List the various environment-related licenses, permits and approvals from public authorities that would likely be required from public authorities (government, regional and/or municipal jurisdictions in which the Project is located should be identified. Detailed annexes should be included where needed.



- Above to be delivered in a draft soft copy report to be emailed to ERM upon completion. One revision following comments. No hard copies required.

8.2 *PHASE I COMMUNITY CONSULTATIONS IN JORDAN AND ISRAEL*

8.2.1 *Objective*

The overall objective of the assignment is to conduct local community consultation for the RDS study programme as part of the Public Consultation and Communications Programme (PCCP). Phase 1 consultations are expected to take place in October and November 2008, while future Phase 2 consultations should take place between September and November 2009.

8.2.2 *Activities and outputs*

The expert will formulate and coordinate a team which will comprise a presenter, a note taker and a technical specialist. The team will be required to organize a meeting/consultation at the following locations:

- On the conveyance route:
 - Location 1 – to be decided following agreement on the PCCP.
 - Location 2 – to be decided following agreement on the PCCP.
 - Dead Sea Tourism
 - Dead Sea Industries
- On the transmission route, additional location(s) for consultation on the freshwater transmission network will be determined once more information about the proposed route becomes known.

For each location, the expert will be required to:

- Arrange a suitable time and venues for the men and women with community leaders for the consultations .
- Distribute a leaflet describing the project in Arabic/Hebrew three weeks in advance of the meeting and inviting men and women to locations that are easily accessible for them, at specific times. The leaflet will be drafted by ERM.
- Show a simple presentation in Arabic/Hebrew on the project – either in Powerpoint or on printed sheets – to be determined. Presentation material to be developed by the consultant with assistance from ERM.



Each team will present the RDS study programme, ask questions of the stakeholders and record their responses. These will be typed up into a report for submission as part of the wider project ESA report. A report outline will be agreed with ERM.

8.3 *ARCHAEOLOGICAL DATA COLLECTION AND REVIEW*

8.3.1 *Objective*

The objective of this task is to provide a mapping and description, of the cultural properties (including archaeological sites, historical sites, heritage sites, graveyards and burial sites) which might be impacted by the saline water conveyance and/or the desalination plant of the RDS study programme, based on previously collected and already existing and available data.

Note that the conveyance line will probably be on Jordanian territory between the Gulf of Aqaba and the desalination plant close to Ghor Fifa. The extent of the study under this Assignment Notice will extend from the Jordanian/Israeli border eastwards to around 1 km east of the wadi/foothills interface, and from the coastline at Aqaba to the Dead Sea, as far as and including Ghor Haditha. Impacts from the freshwater transmission pipelines passing from Fifa to Amman and from Fifa to Hebron or Jerusalem will be the subject of a separate Scope of Work.

Note that this assignment is designed to scope out the properties and sites, using available data, without field surveys. The results of this study will be used to design a more detailed survey of key areas which will be identified in the study.

8.3.2 *Activities and outputs*

The expert will:

- Review the various conveyance pipeline routes, possible desalination plant locations and transmission pipeline routes, made available by ERM.
- Assemble, review and evaluate the existing data sources relating to possible cultural sites in the study area, including collection of existing data from local authorities and other sources where necessary. These may be available in different formats, locations, etc.
- Identify areas along the study area where cultural sites are known to be present. Provide location maps and concise information on these sites, with an assessment of the significance/importance of the site.



- Make recommendations on the relative risk to the sites, from the 2 or 3 alternative route alignments which will be provided by ERM.
- Make recommendations and a costed work plan for the collection of additional data/ gap filling in areas of particular interest/ risk along the pipeline route.

The expert should:

- Provide a concise report listing and describing the areas of cultural sites which might be impacted by the project, with map.
- Provide a concise GIS map/ database of the cultural sites, showing location, information about the site and its significance.

