

***RUSSIAN ECONOMIC  
REPORT #19***

***From Crisis to Recovery –  
Policies Matter***



**WORLD BANK**  
IN THE RUSSIAN FEDERATION

Zeljko Bogetic

Lead Economist for Russia

*World Bank Moscow Office*

*Moscow*

*June 24, 2009*



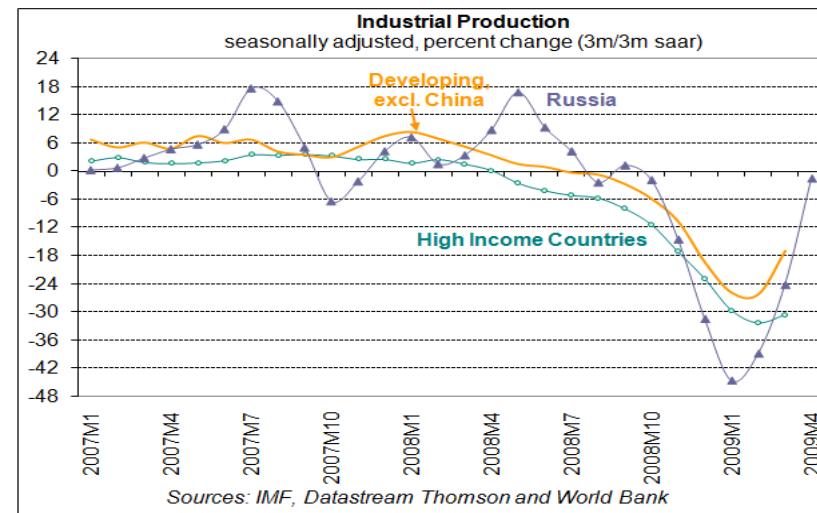
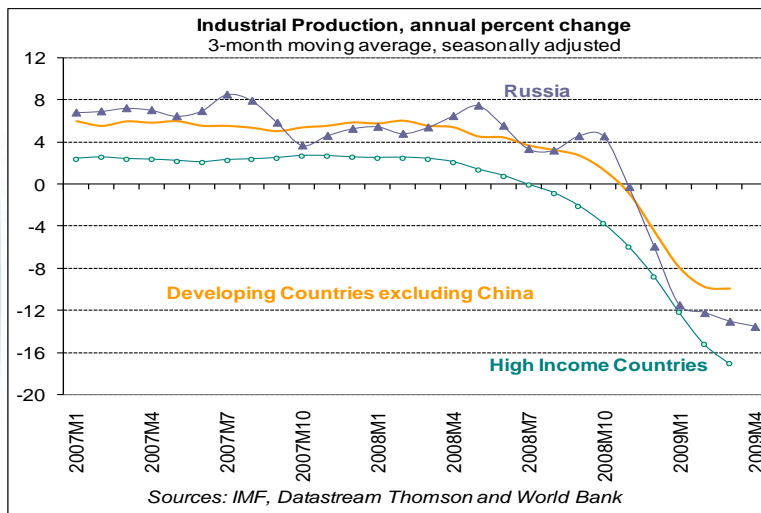
- I. External environment
- II. Recent developments in Russia
- III. Economic and social outlook for 2009-2010
- IV. Policy challenges



**WORLD BANK**  
IN THE RUSSIAN FEDERATION

# I. External Environment: global crisis escalates in Q1 2009

The impact of the global financial crisis escalated throughout the first quarter of 2009 with sharp contractions in developed and emerging markets



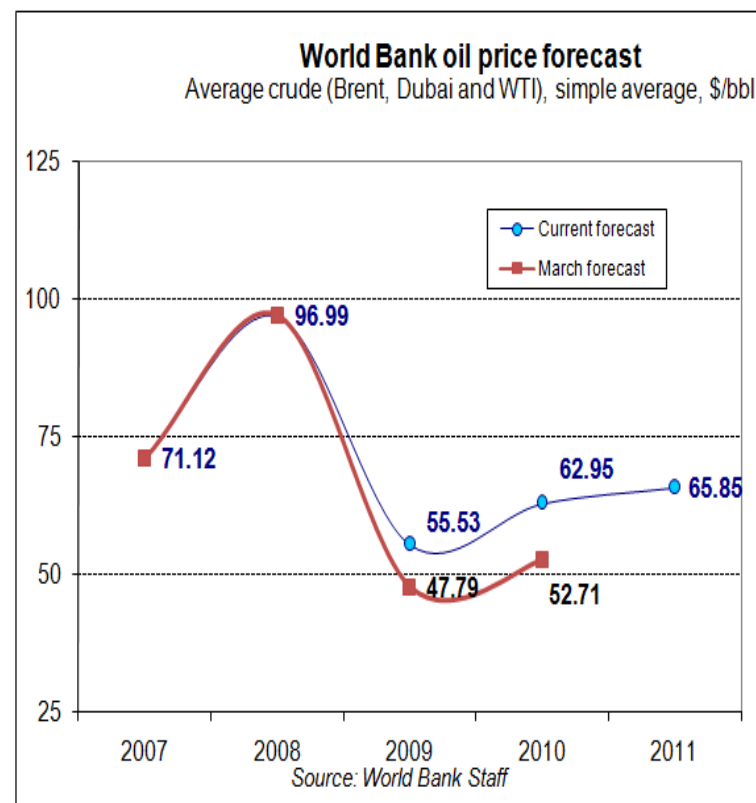
**WORLD BANK**  
IN THE RUSSIAN FEDERATION

## ...on the other hand, there are some positive signs – “green shoots” – at the global level

**Box table 1. Capital flows to emerging markets down sharply in Q1 2009, but show some recovery in April-May**

Gross capital flows to emerging markets									
\$ billion	2007		2008			2009			
	Q1	Total	Q1	Jan-May	Total	Q1	Apr	May	YTD
Total	156	652	103	194	389	45	13	22	80
Bonds	58	146	12	36	65	18	5	8	31
Banks	72	312	71	115	257	19	2	8	29
Equity	26	194	20	43	68	9	5	6	20
Lat. America	42	156	19	46	90	21	2	4	27
Bonds	20	45	5	16	20	10	2	1	13
E. Europe	79	247	36	66	157	5	4	7	16
Bonds	27	64	2	15	35	3	3	5	10
Asia	24	188	38	57	98	17	7	9	32
Bonds	8	23	3	3	7	5	1	1	6
Others	11	61	11	24	44	2	0	3	5

**Box figure 2. Oil prices projected to moderate on slowing demand and weak supply response**



**WORLD BANK**  
IN THE RUSSIAN FEDERATION

# Global Economic Outlook for 2009-10 remains grim

- Real GDP growth
  - -2.9% (2009)
  - +2.0% (2010) (recovery possible but uncertain)
  - High-income countries about -4.5% (2009) and developing countries +1.3% (2009), downward revisions from previous forecasts in March
- World trade
  - -9.7% (2009)
  - +3.8% (2010)
- Oil prices
  - USD 55.53 (2009) [ Urals: \$50-53 ]
  - USD 62.95 (2010) [ Urals: \$55 -\$60 ]



# II Recent Developments in Russia: Output and investment—contracting sharply

A worsening global environment—contracting global demand, falling commodity prices, and tightening of credit—has accelerated Russia’s economic downturn in the first quarter of 2009

## Main macroeconomic indicators, 2006-09

	2006	2007	2008	Q1-2009	Jan-Apr 09	Jan- May 09
GDP growth, %	7.7	8.1	5.6	-9.8	-9.8*	-10.1**
Industrial production growth, y-o-y, %	6.3	6.3	2.1	-14.3	-14.9	-15.4
Fixed capital investment growth, %, y-o-y	16.7	21.1	9.8	-15.6	-15.8	-17.7
Federal government balance, % GDP	7.4	5.5	4.0	-0.6	-3.3	-3.1
Inflation (CPI), % change, e-o-p	9.0	11.9	13.3	5.4	6.2	6.8
Current account, billion USD	95.6	76.6	98.9	11.1	n/a	n/a
Unemployment, % (ILO definition) (period average)	7.2	6.1	6.4	9.4	9.6	9.7
Memo: Oil prices, Urals (USD a barrel)	61.2	69.5	95.1	44.1	45.5	47.8
Reserves (including gold) billion USD, e-o-p	303.7	478.8	427.1	383.9	383.9	404.2

Source: Rosstat, CBR, Ministry of Finance, Bloomberg.

\* Preliminary estimate by Ministry of Economic Development.

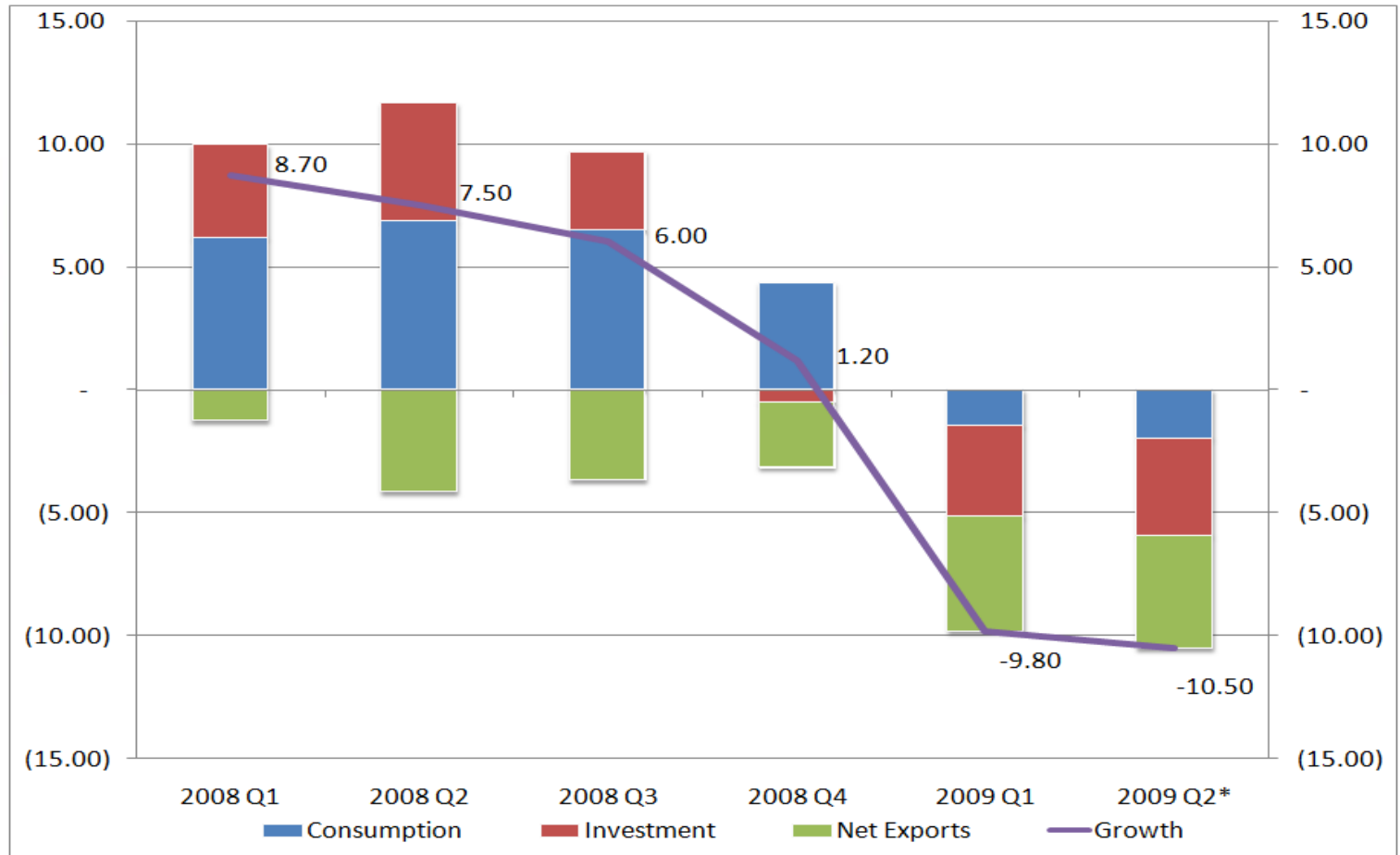
\*\* Preliminary World Bank staff estimate.



**WORLD BANK**  
IN THE RUSSIAN FEDERATION

# Domestic demand - collapsing

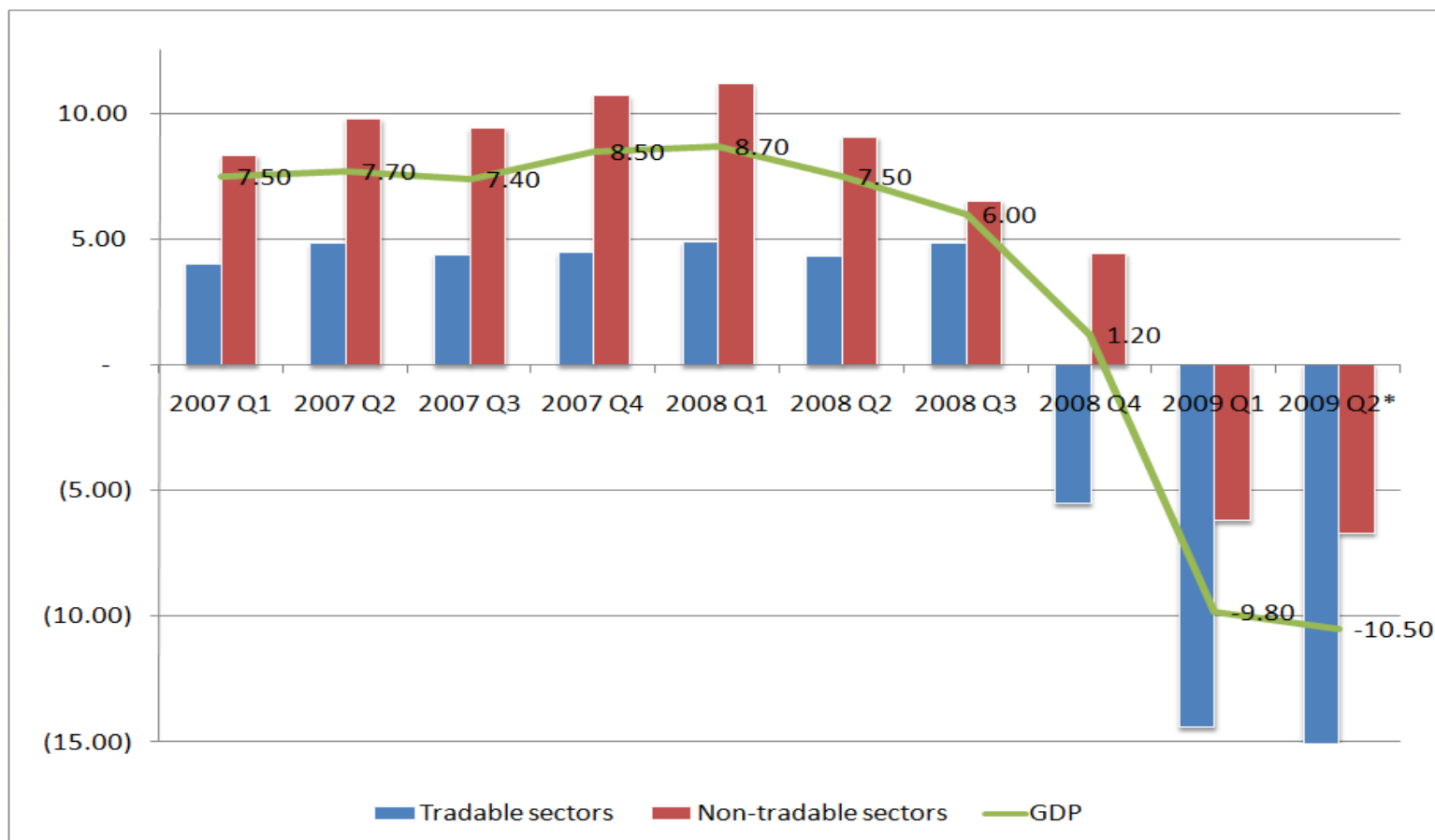
Weak global demand and uncertainties combined with tighter credit and rising unemployment constrain both consumption and investment in Russia



**WORLD BANK**  
IN THE RUSSIAN FEDERATION

## *No visible signs of recovery – decline in tradable sector worsening*

The Russian economy continued an across-the-board decline in output in the first quarter of 2009



**WORLD BANK**  
IN THE RUSSIAN FEDERATION

# Labor markets—adjusting downward sharply

A sharp downward adjustment in the labor market continued in the first quarter of 2009, following the dramatic decline in output

## Labor productivity, disposable income, wages, and unemployment

	2006	2007	2008	Q4-2008	Q1-2009	Jan-May 2009
GDP growth, %, y-o-y	7.7	8.1	5.6	1.2**	-9.8	-10.1
Total employment, million people	68.8	70.5	70.9	70.4	67.8	68.0
Employment growth, %, y-o-y	0.8	2.4	0.5	-0.4	-2.9	-3.4
Labor productivity growth, %, y-o-y	6.9	5.5	5.0	1.8	-6.7	-6.6***
Real disposable income growth, %, y-o-y	13.5	12.1	2.9	-5.8	-1.3	-0.4
Real wage growth, %, y-o-y	13.3	17.2	10.3	5.0	-0.8	-2.0
Average monthly wage, USD	391.9	532.0	694.3	668.2	490.8	531.0
Unemployment (% , ILO definition, e-o-p)	6.9	6.1	7.8	7.8	10.0	9.9

Source: Rosstat.

\* Preliminary estimate by Ministry of Economic Development.

\*\* Preliminary estimate by the World Bank staff.

\*\*\* Jan-Apr 2009



**WORLD BANK**  
IN THE RUSSIAN FEDERATION

# Balance of payments—improving with rising oil prices

A drastic downward adjustment in the current account, caused by terms-of-trade shock and shrinking demand for Russian exports, appears to have ended in Q1-2009

## Balance of payments (USD billions)

	2006	2007	Q1-08	Q4-08	2008 <sup>a</sup>	Q1-09
Current Account Balance	94.7	77.0	38.0	8.6	102.3	11.1
<i>Trade Balance</i>	139.3	130.9	49.9	24.7	179.7	21.7
Capital and Financial Account	3.3	85.7	-25.7	-136.9	138.8	-29.9
Errors and Omissions	9.5	-13.8	-5.8	-2.8	-8.9	-12.3
Change in Reserves (+ = increase)	107.5	148.9	6.4	-131.1	-45.3	-31.1

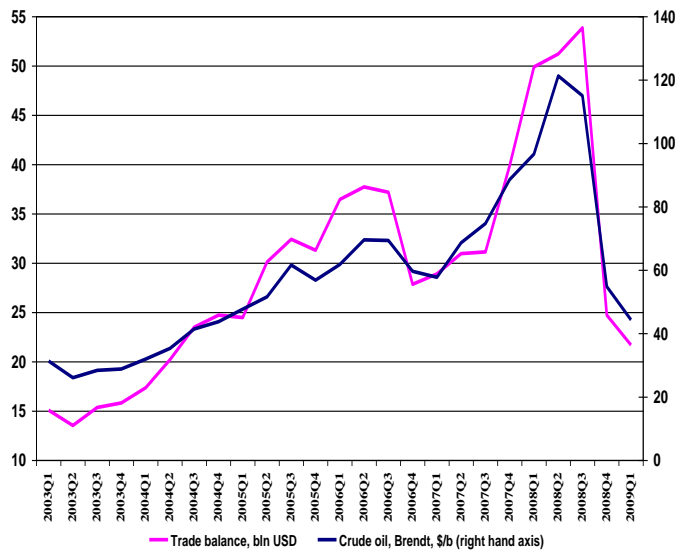
Source: CBR. <sup>a</sup> Preliminary estimates.



**WORLD BANK**  
IN THE RUSSIAN FEDERATION

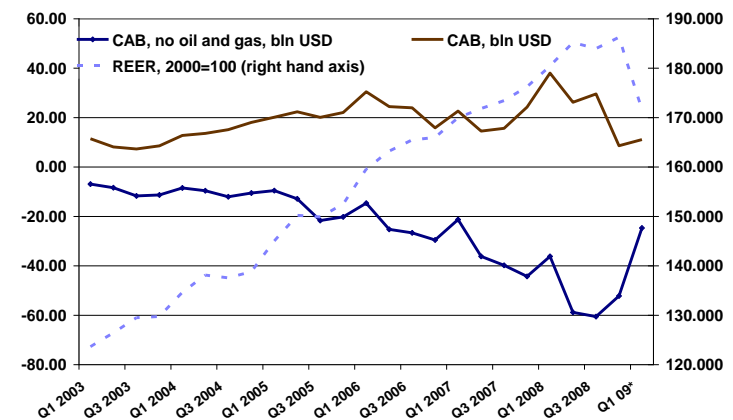
# The trade balance, on the other hand, continued to deteriorate as a decline in exports outpaced import contraction

Figure 1.4. Oil prices and the trade balance



Source: CBR and World Bank staff.

Figure 1.5. Current account balances and the real effective exchange rate



Source: World Bank staff calculations based on Rosstat and CBR data. Note: Real effective exchange rates for 2009 Q1 include only January-February

# Capital outflows have moderated considerably

A massive reversal of private capital inflows in the last two quarters of 2008 and January 2009 ended in mid February 2009 as CBR tightened monetary conditions and oil prices started to recover



**WORLD BANK**  
IN THE RUSSIAN FEDERATION

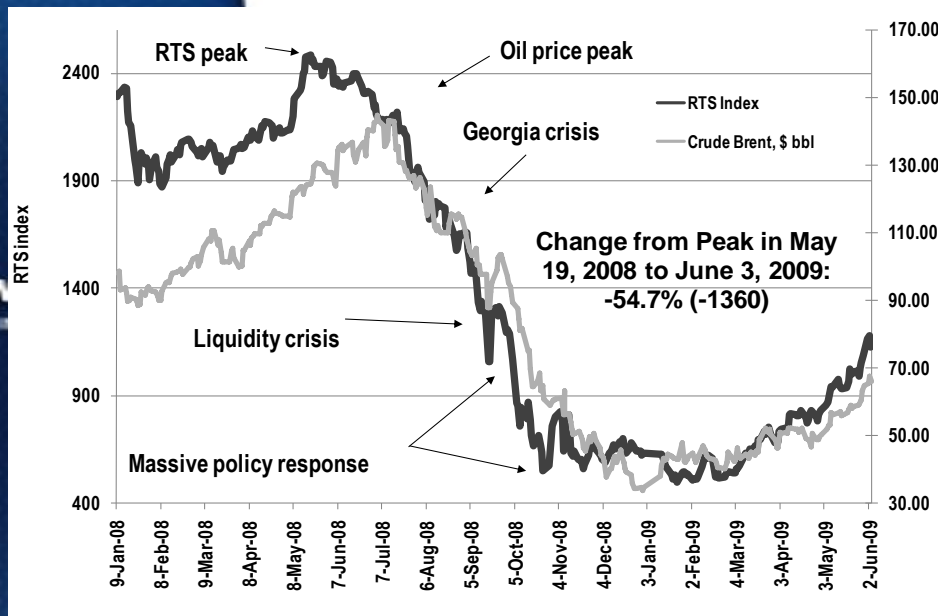
## Net capital flows (USD billions), 2006-Q1 2009.

	2006	2007	2008	Q1- 2008	Q4- 2008	Q1- 2009
Total net capital flows to the private sector	41.4	82.4	-132.7	-23.6	-130.6	-38.8
Net capital flows to the banking sector	27.5	45.8	-57.6	-9.9	-56.3	-5.8
Net capital flows to the non banking sector	13.9	36.6	-75.1	-13.7	-74.3	-32.9

*Source: CBR.*

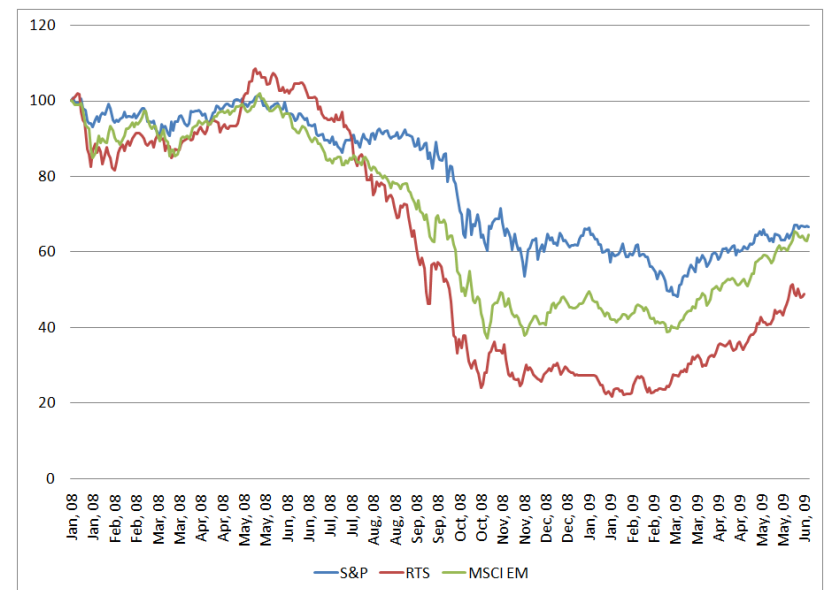
# The Russian stock market—an important transmission channel of the crisis to the real economy—rebounded strongly on the back of a recent rise in oil prices

**Figure 1.6. Recent Changes in the Russian Stock Market and Oil Prices**



Source: RTS, Thompson Datastream, World Bank staff calculations

**Figure 1.7 RTS, S&P 500, MSCI Emerging Market stock indices 2008-2009 (Jan 1 2008=100)**



# Monetary and exchange rate policy -easing monetary conditions, higher exchange rate volatility

---

- At the end of April 2009 the CBR started to loosen monetary conditions, lowering its policy rates—by 50 basis points at the end of April and by another 50 basis points in May and June—to 11.5 percent
- CBR is exercising more flexible exchange rate policy. With higher oil prices putting upward pressure on ruble, the CBR can increase its foreign exchange reserves to avoid excessive appreciation of the currency that might undermine the economic recovery
- Meanwhile the liquidity conditions remain fairly tight, while the interbank market continues to be constrained by escalating problems with non-performing loans and worsening balance sheets of banks



# Fiscal policy—rising deficit and declining fiscal reserves as fiscal stimulus plans are implemented

## Consolidated budget: revenues, expenditures, and the fiscal surplus, 2007-09

	2007 (actual)	2008 (actual)	Federal Budget Law (Nov)	Federal Budget Law Revised (Apr)	2009 Jan- April (actual)
<b>Consolidated budget</b>					
Revenues, % GDP	40.2	38.5	n/a	n/a	32.6
Expenditure, % GDP	34.1	33.7	n/a	n/a	33.0
Surplus, % GDP	6.1	4.8	n/a	n/a	-0.4
Non-oil balance, % GDP	-2.9	-5.8	n/a	n/a	
<b>Federal budget</b>					
Revenues, % GDP	23.6	22.3	21.2	16.6	19.8
Expenditure, % GDP	18.1	18.2	17.5	24.0	23.1
Surplus, % GDP	5.4	4.1	3.7	-7.4	-3.3
Non-oil balance, % GDP	0.6	-6.4	-5.4	-12.5	-11.9

Source: Ministry of Finance, Economic Expert Group (EEG).



**WORLD BANK**  
IN THE RUSSIAN FEDERATION

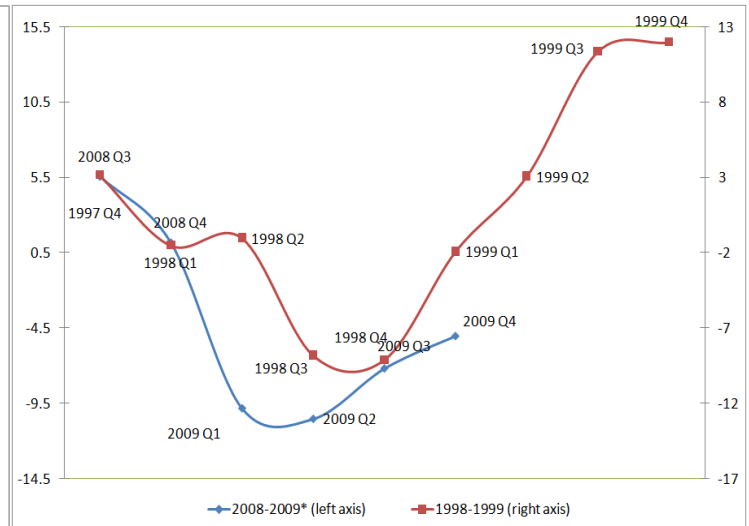
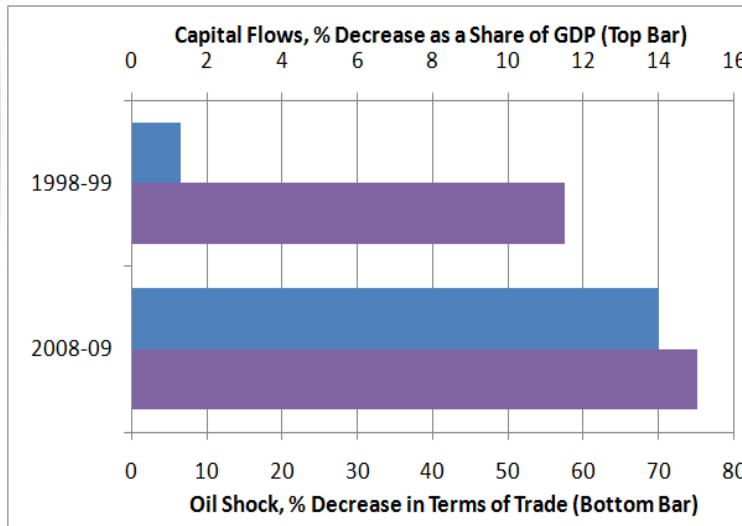
# Fraternal twins: Russia's two crises 1997-98 and 2008-09

**Oil Price Drop and Capital Outflows Were Much Deeper in 2008**

**Comparing Recovery Paths, 1998-99 vs 2008-09**



**WORLD BANK**  
IN THE RUSSIAN FEDERATION



# III Outlook for Russia, 2009-10

Given a much larger GDP contraction in the first quarter of 2009 than anticipated, Russia's economy is likely to contract by 7.9 percent in 2009, despite higher oil prices assumed in the current forecast



**WORLD BANK**  
IN THE RUSSIAN FEDERATION

	2009	2010
World growth, %	-2.9	2.0
Oil prices, World crude average, USD/bbl	56	63
GDP growth, %	-7.9	2.5
Federal government balance, %	-7.2	-6.0
Current account, USD bln.	32	36
<i>Capital account, USD bln.</i>	-60	-30

*Source:* World Bank projections.

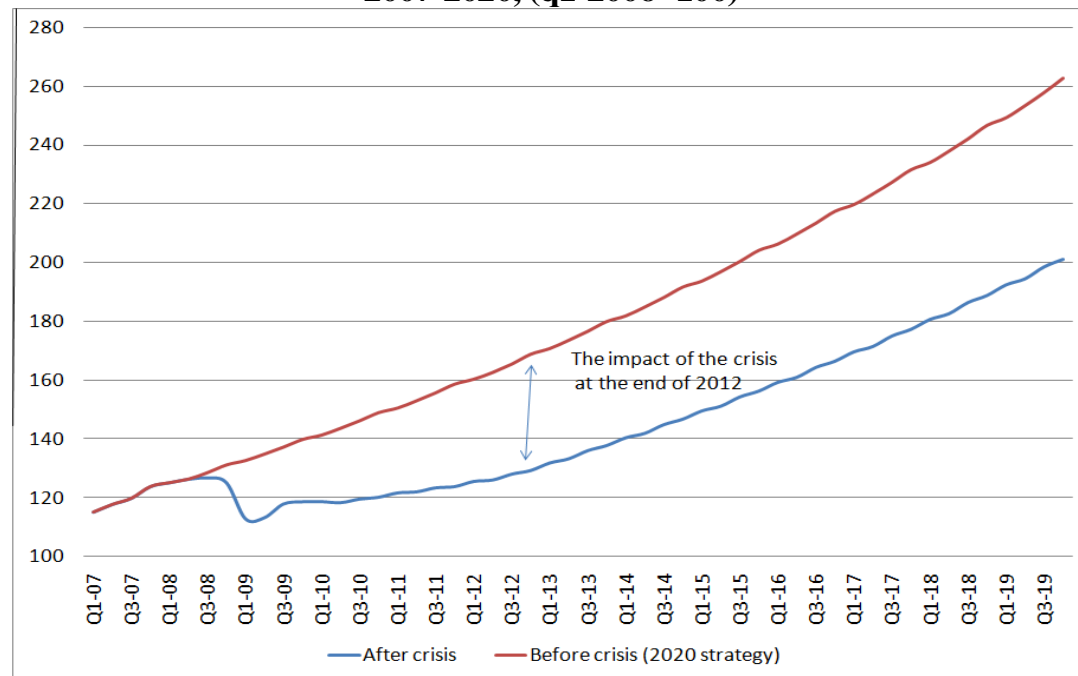
# The impact of the crisis on the long-term development objectives in Russia

Looking into medium term, with the current growth profile and possible growth of 3.5 percent in 2011 and 2012, real GDP levels in Russia will reach pre-crisis high only at the end of third quarter of 2012



**WORLD BANK**  
IN THE RUSSIAN FEDERATION

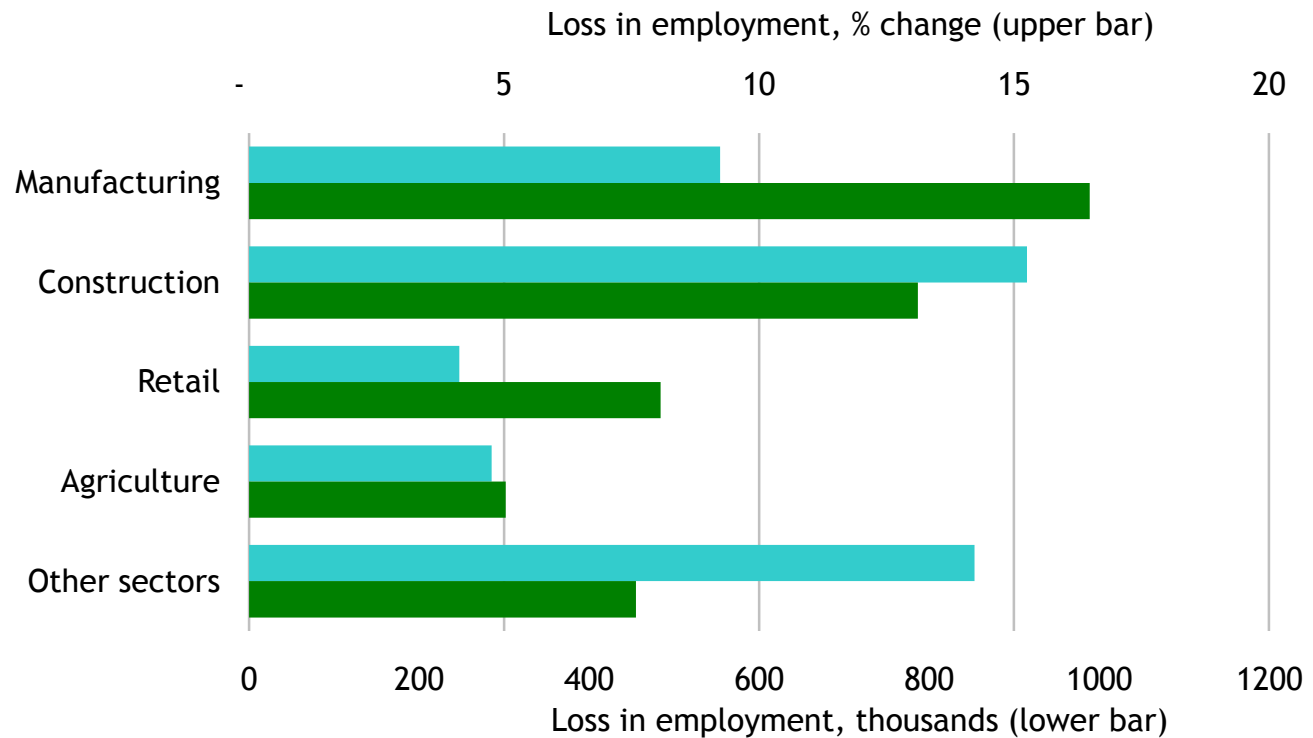
**The impact of the crisis on the long-term development objectives in Russia: dynamics of GDP level in Russia 2007-2020, (q1-2006=100)**



Source: world bank projections. Strategy 2020

# Labor markets—adjusting downward sharply

Figure 1.4 Projected loss of employment in Russia in 2009



Source: World Bank staff estimates.



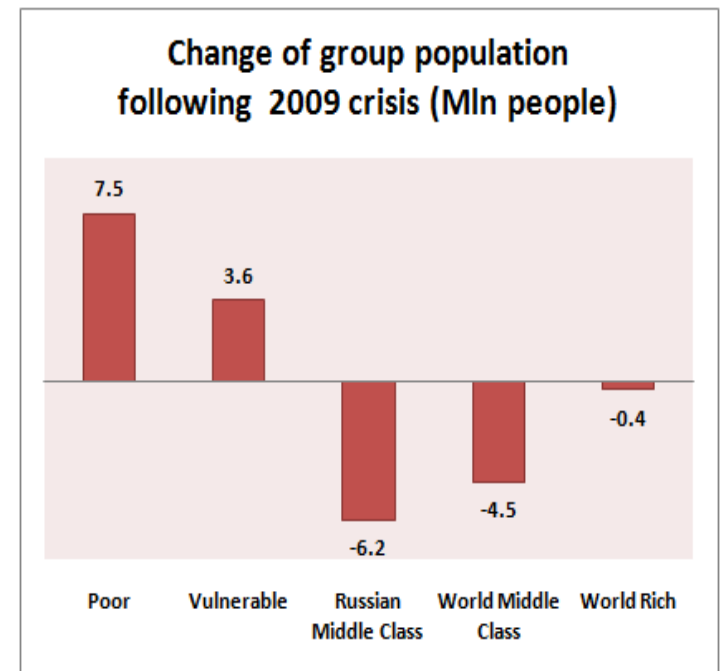
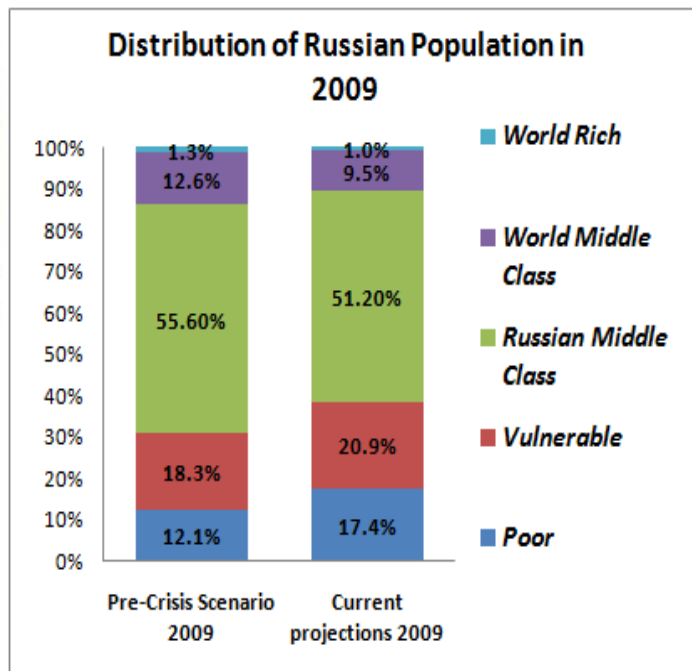
**WORLD BANK**  
IN THE RUSSIAN FEDERATION

## *The social indicators are expected to continue deteriorating*

- Real incomes are likely to fall further and the number of unemployed is expected surpass 13 percent by year-end.
- Larger economic contraction in 2009 will result in additional increase in the number of poor and shrinking of the middle class.



**WORLD BANK**  
IN THE RUSSIAN FEDERATION



## IV. Policy challenges going forward

---

- *Russia faces a balancing act of limiting the larger-than-anticipated social impact of the crisis while not losing control of the public finances and supporting economic recovery.*
- *As indicated in the previous economic report on Russia, in the short-term the focus economic policy should be on increasing social protection, support for infrastructure and small and medium enterprises*
- *Fiscal sustainability requires that additional increases in expenditures are also followed by reforms aimed at broadening the revenue base and ensuring greater efficiency in public programs.*
- *In addition, the authorities need to address fundamental weakness that have been brought to the fore in the banking sector, including acceleration of consolidation in the banking sector*



Thank you!



**WORLD BANK**  
IN THE RUSSIAN FEDERATION



Saint Basil's Cathedral, Red Square  
by Harry Kikstra