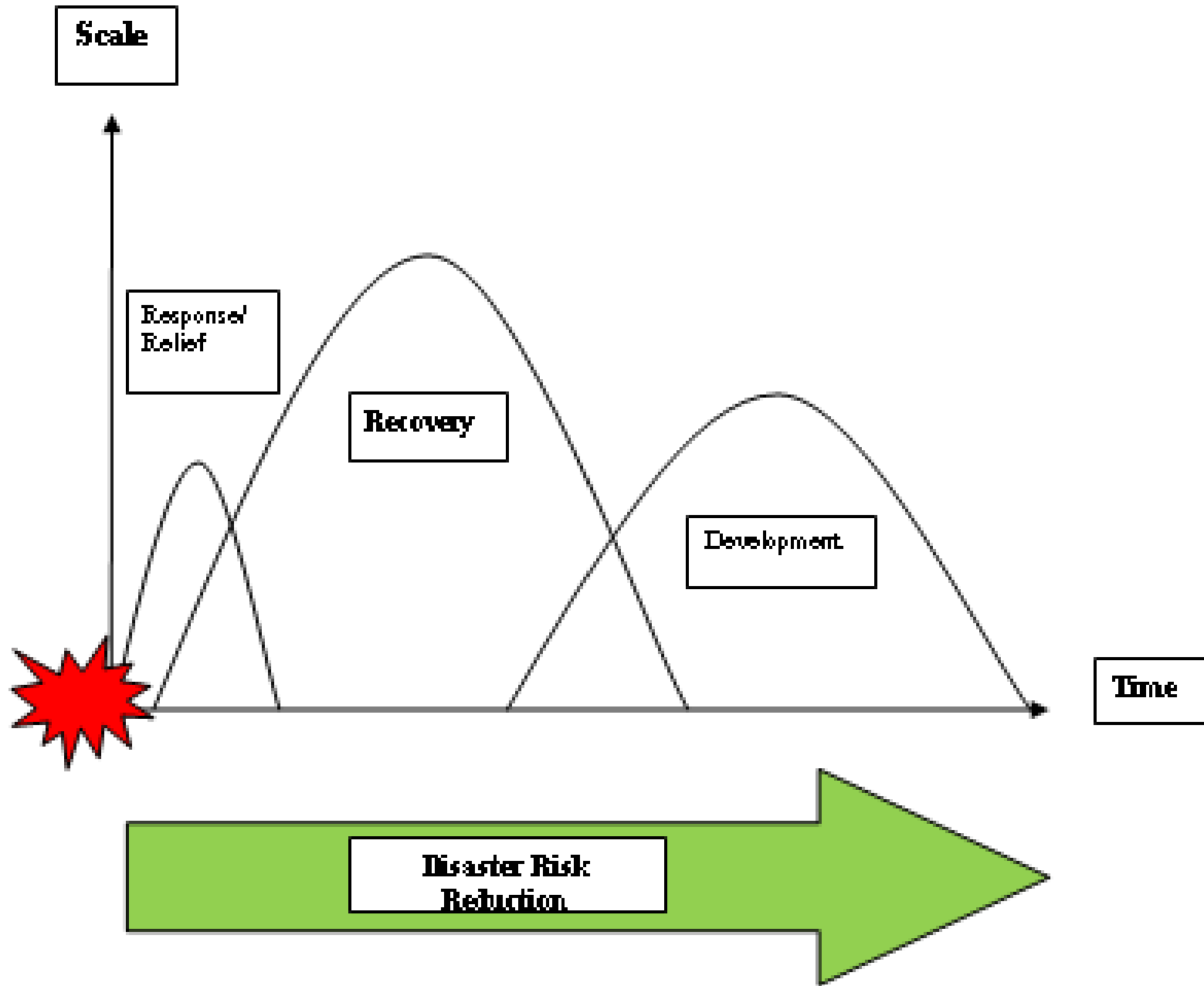




POST-DISASTER DAMAGE, LOSS AND NEEDS ASSESSMENT

PMI-IFRC Experience

Yogyakarta & Central Java Earthquake











INITIAL ASSESSMENT



- PMI/IFRC did 24 & 72 hour assessments
- Emergency Response Units continued gathering information while distributing relief:
 - WASH; health; shelter; relief; security



RAPID ASSESSMENT



- Day 5: two week assessment begins
- Simultaneous participation in GOI-World Bank led joint damage, loss & needs assessment
- Site selection: poverty data + severe damage and loss – not covered by others
- Team: multi-disciplinary; gender and ethnic balance; university students (UGM)
- Coverage: relief feedback; vulnerability & coping strategies; priorities; market analysis



FINDINGS



- 2 vulnerable sub-districts not well covered by other agencies
- Shelter highest priority
- Preferred neighbourhood groups to coordinate assistance – corruption and leadership issues



KEY APPROACH:

IT IS NOT
ABOUT BUILDING STRUCTURES
IT IS ABOUT
BUILDING TRUST WITH COMMUNITIES



In-depth Assessment



- Commenced week 4 (3 weeks)
- Detailed discussions with targeted communities on shelter needs and design
- Vulnerability targeting
 - PMI/IFRC criteria
 - Community criteria
- Establishment of financial management committees



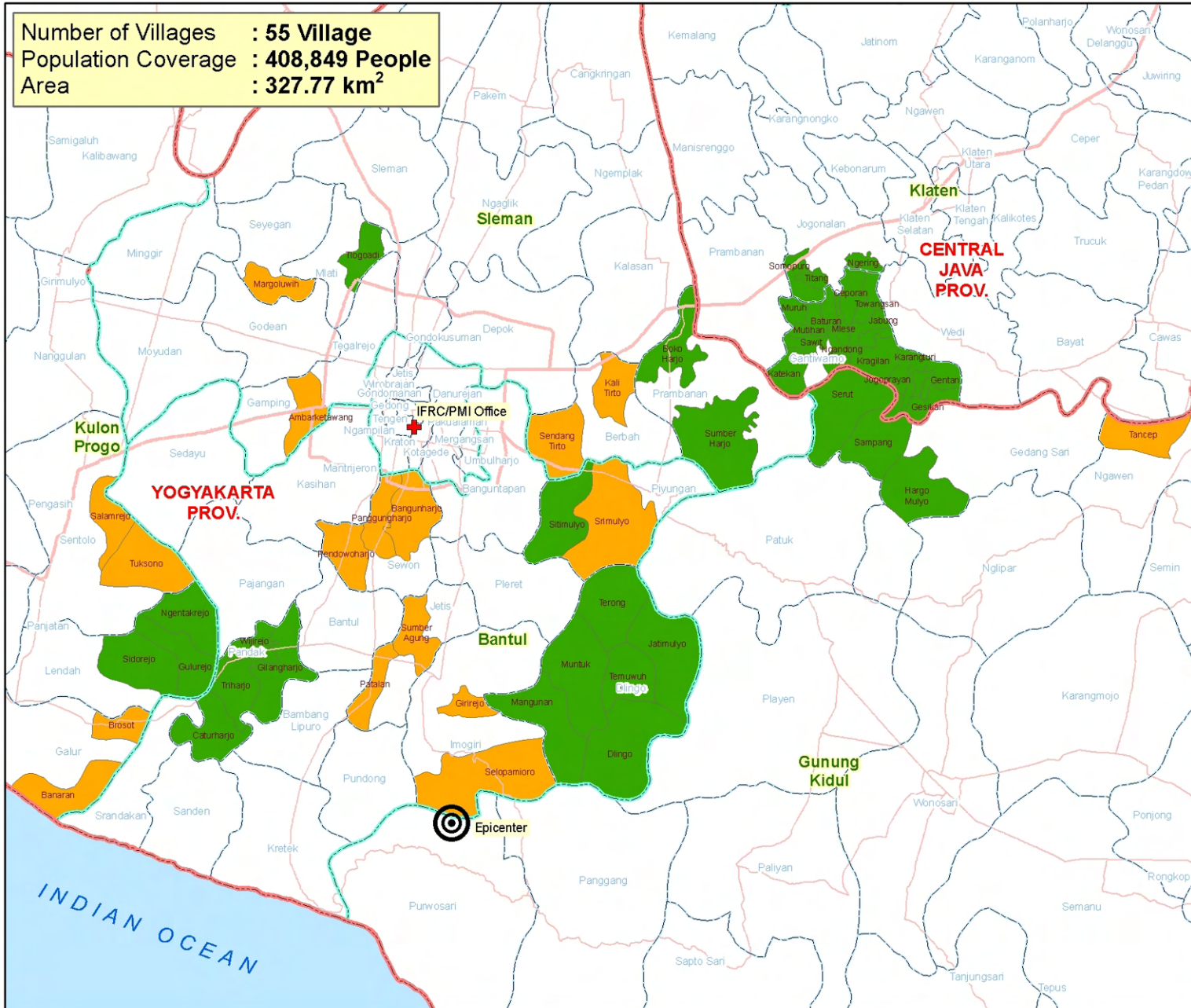
PROGRAM



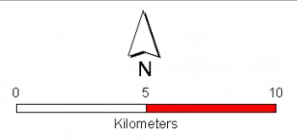
Small Cash Grants Via Traditional Mutual Support Mechanism

- To neighborhood groups to buy tools & basic materials and build temporary shelters (17,000 over 6-8 months)
- Funds delivered through group bank account in tranches
- Community contributes labour and materials recovered from rubble

Number of Villages : **55 Village**
 Population Coverage : **408,849 People**
 Area : **327.77 km²**



**EARLY RECOVERY
 COVERAGE AREA
 NOVEMBER 2006**



Datum WGS 84
 Projection UTM Zone 49
 Grid Unit Long/Lat

- Primary Road
- Secondary Road
- ▭ Province Boundary
- ▭ District Boundary
- ▭ Sub-District Boundary
- T-Shirt
- Complete on Aug - Oct 06
- November 06

YOGYA Province
Bantul District
Playen Sub-District
 Jatimulyo Village



GIS Officer - IFRC Yogya : <yudho.indardjo@ifrc.org>
 c/o Palang Merah Indonesia
 Jalan Jend. Gatot Subroto, Kav. 96,
 Jakarta 12790, INDONESIA
 Tel: +62-21-7919-1841
 Fax: +62-21-7919-0906
 E-mail: ifrcid@ifrc.org
 Web: www.ifrc.org





CONTINUOUS ASSESSMENT



- Live-in volunteers
- Regular community consultation and use of established grievance mechanisms
 - (*Musyawah*)
- Weekly volunteer/staff reflection meetings
- Mid-term review (3 months)
 - gender issues









OUTCOMES



- Around 17,000 families were provided with tools, funds and/or transitional shelters.
- 12,250 shelters built, covering 938 neighbourhood groups in 55 villages in Yogyakarta and Central Java.
- An estimated 60,000 people were involved in building the shelters.