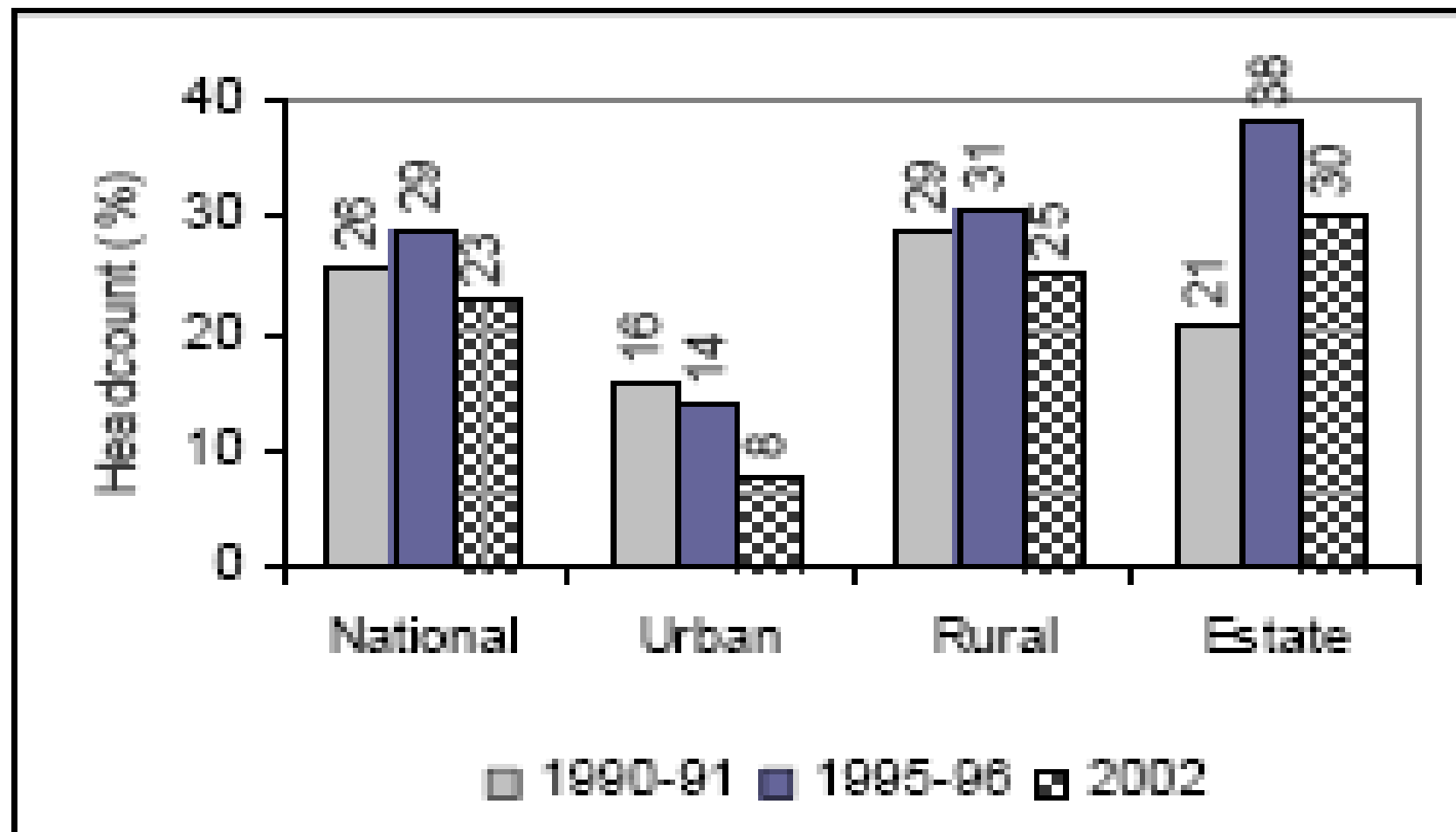


Inequity, Poverty and Development

August 10, 2007

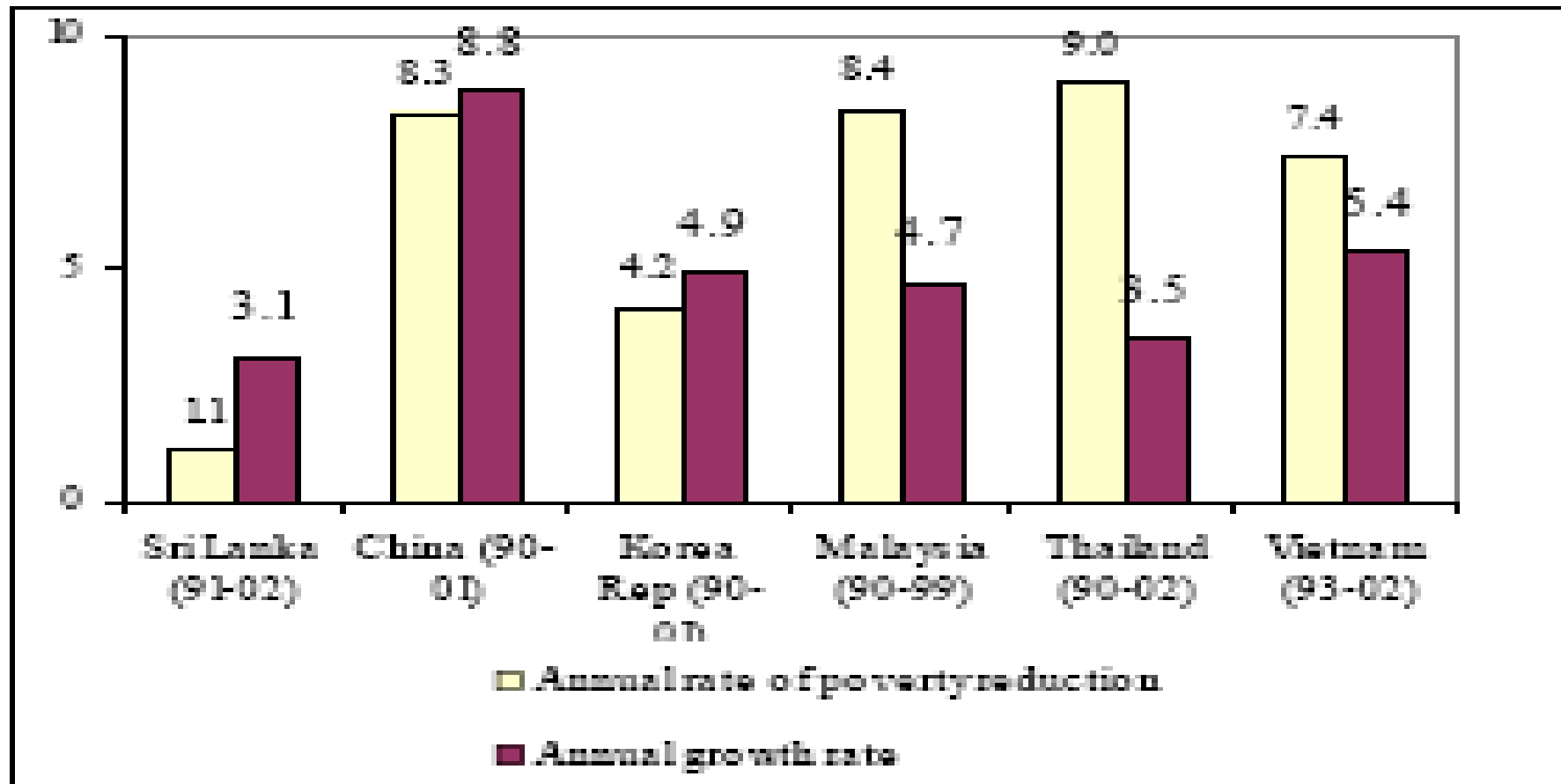
**Naoko Ishii
Country Director, World Bank**

Figure 1-1: Poverty headcount trends in Sri Lanka, 1990–2002



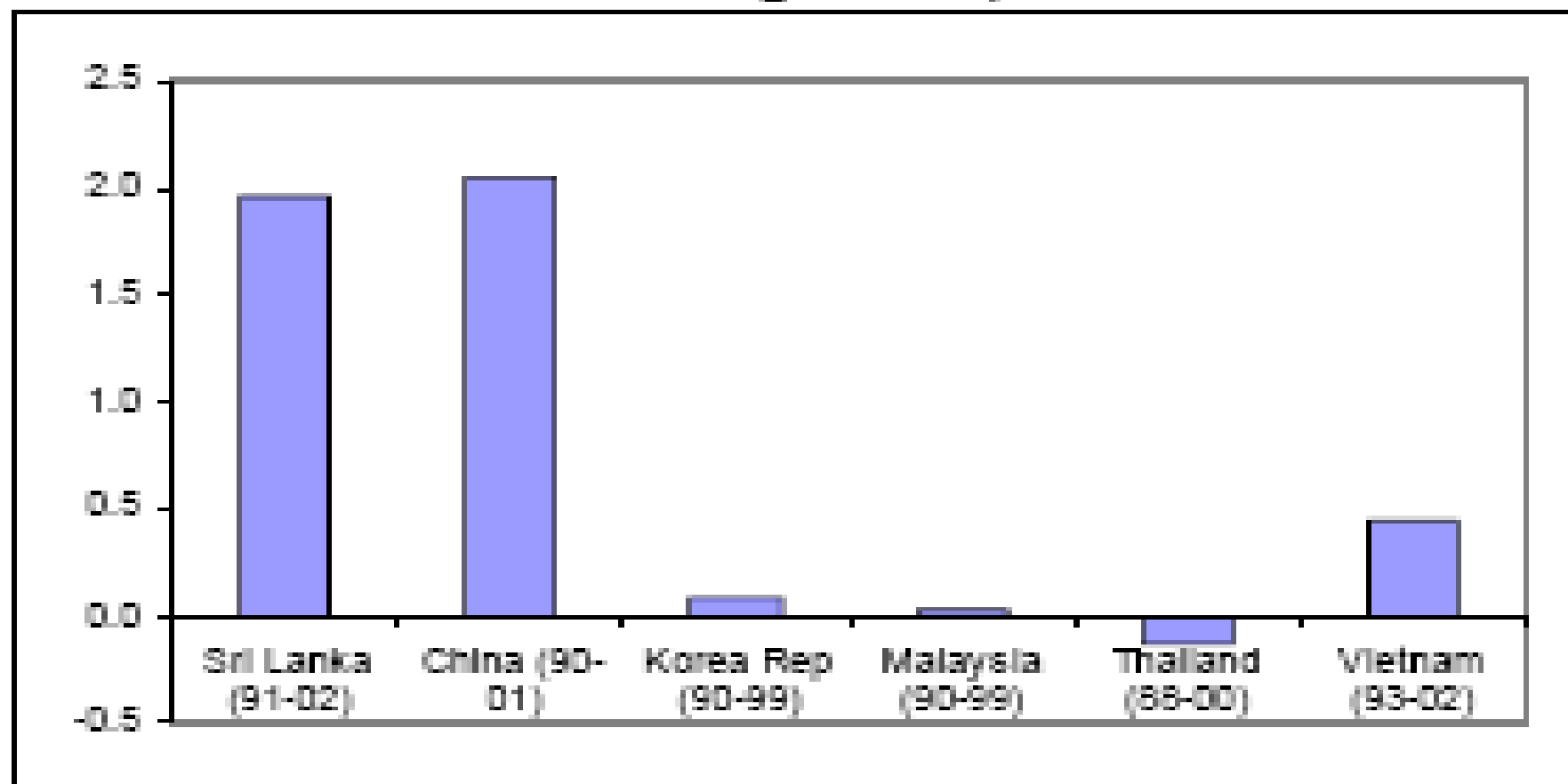
Source: HIES for different years, using official poverty lines for Sri Lanka (data excludes North & East)

Figure 1-4: Annual rates of growth and poverty reduction in the 1990s (percent)



Source: Real per capita GDP data:- World Bank, WDI, (2005a). Poverty headcount ratios: Sri Lanka:-DCS (2004); China:- Ravallion and Chen (2004); Korea:-World Bank (2004a); Malaysia:-World Bank (2004b); Thailand:-S. Jitsuchon (2004); and Vietnam:-Glewwe et al (2000) and Carolyn Turk (2005).⁴

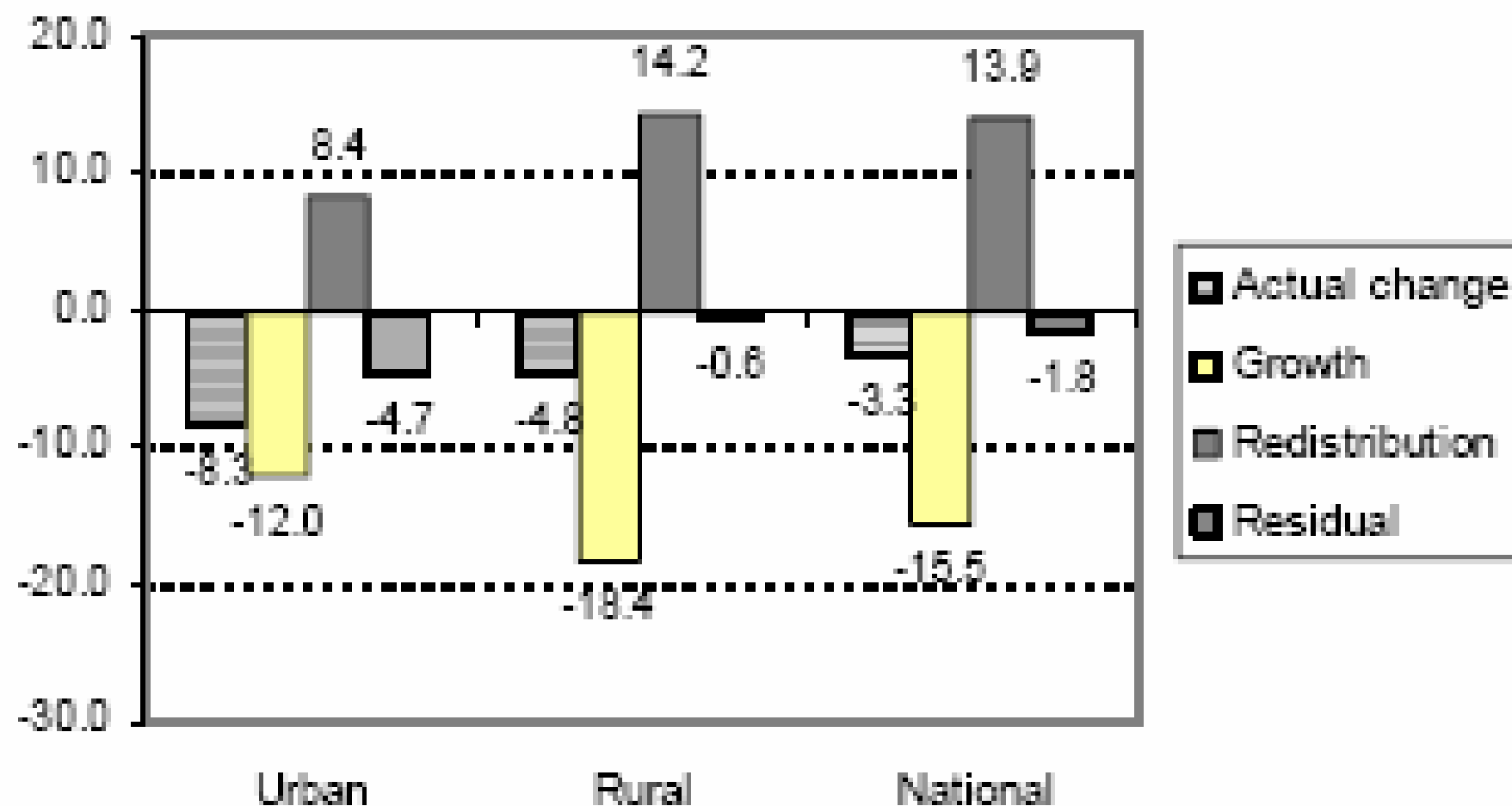
Figure 1-5: Average annual growth rate of Gini coefficient in the 1990s (percent)



Note: Gini coefficients of per capita consumption for China and Sri Lanka, of per capita income for the rest.

Source: China—Ravallion and Chen (2004); Korea—World Bank (2004); Malaysia—Government of Malaysia (2001); Thailand, Vietnam—PovCalNet at the World Bank (various years); Sri Lanka—HIES (2002).

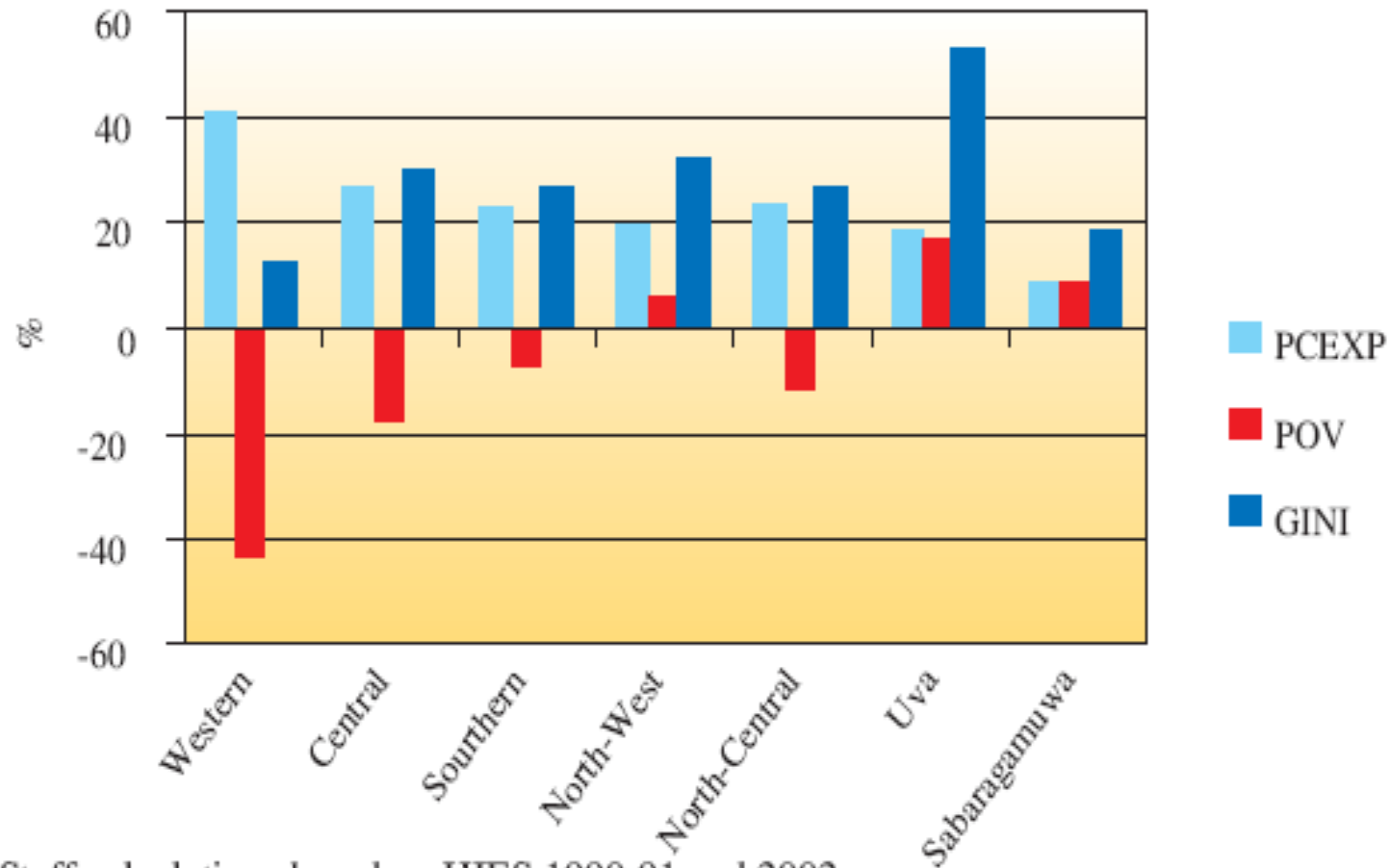
Figure 2-3: Growth-inequality decomposition between 1990–91 and 2002



Source: World Bank staff calculations using HIES

Figure 2.1: Regional Variations, 1990/91-2002

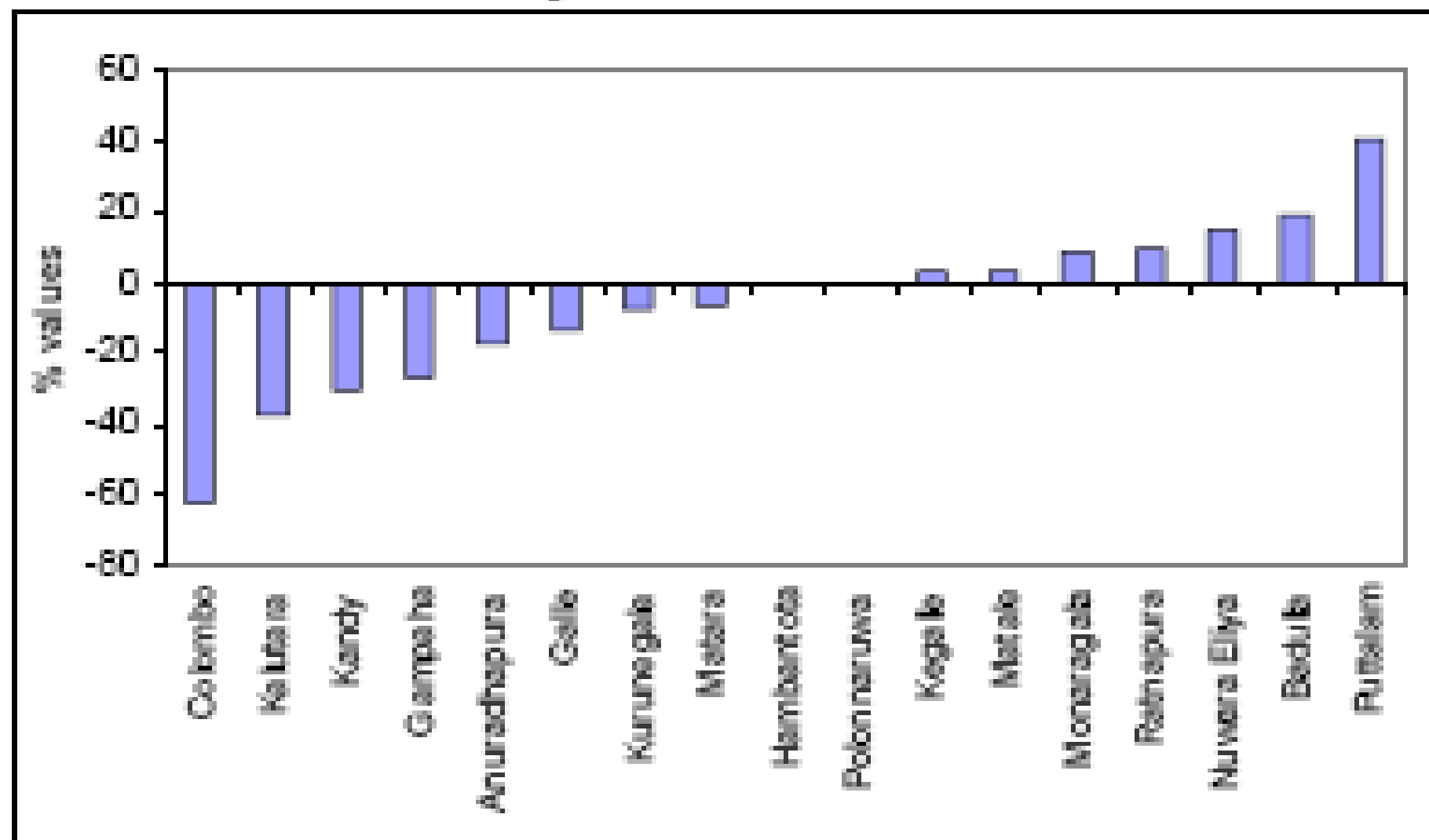
Growth rates of Poverty, GINI, and Expenditure



Source: Staff calculations based on HIES 1990-91 and 2002

Notes: "PCEXP" refers to "real per capita consumption expenditure (at 2002 prices)"; "POV" refers to "poverty headcount rates"; "GINI" refers to "Gini coefficients of real per capita consumption expenditure".

Figure 2-2: Percent change in headcount between 1990–91 and 2002 by district



Source: HIES (1990–91 and 2002).

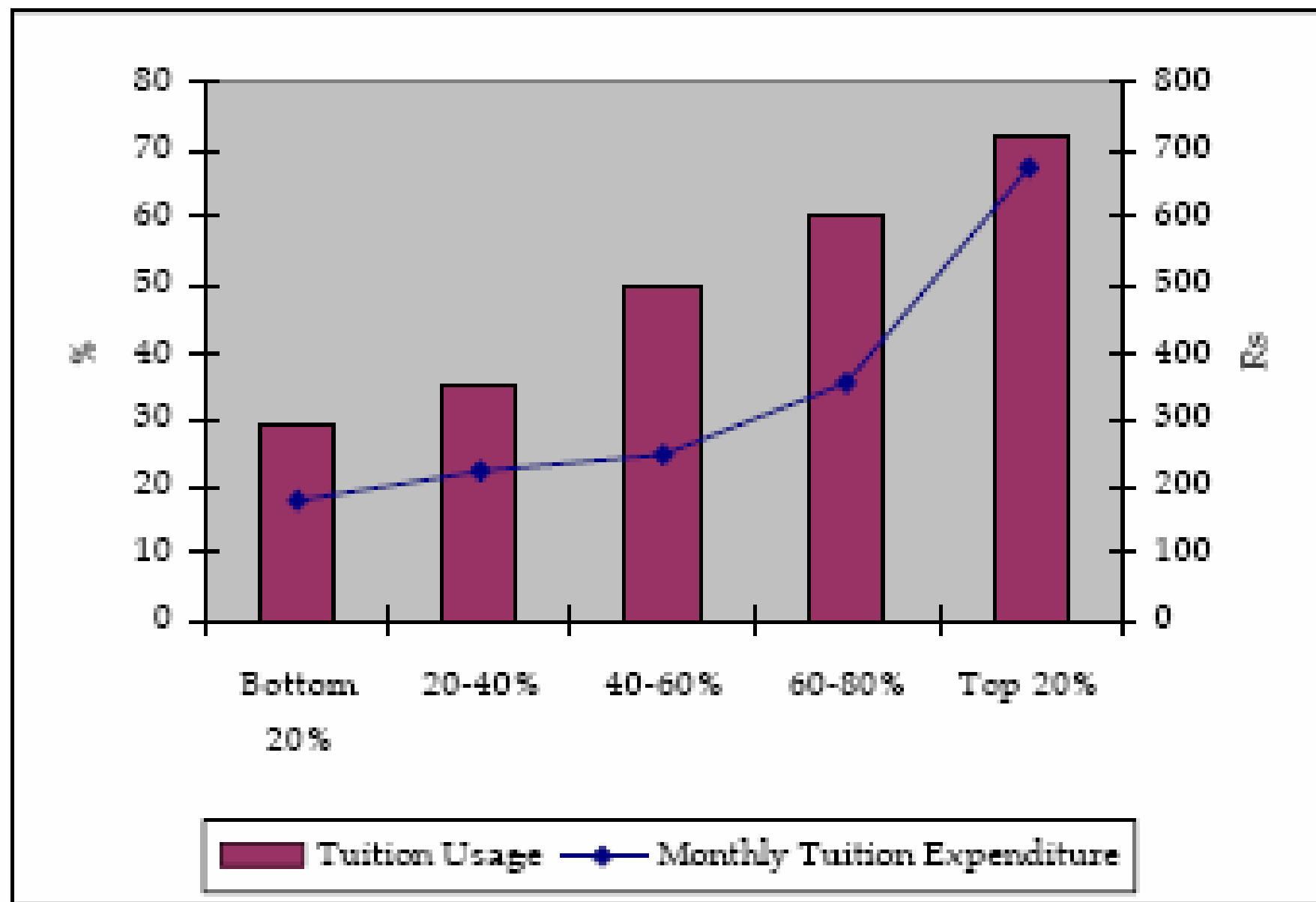
Table 5-6: Mastery skills at grade 4, 2003

(percent)

<i>Mastery skill</i>	<i>Sri Lanka</i>	<i>Urban</i>	<i>Rural</i>
First language	37	51	34
English	10	23	7
Mathematics	38	52	35

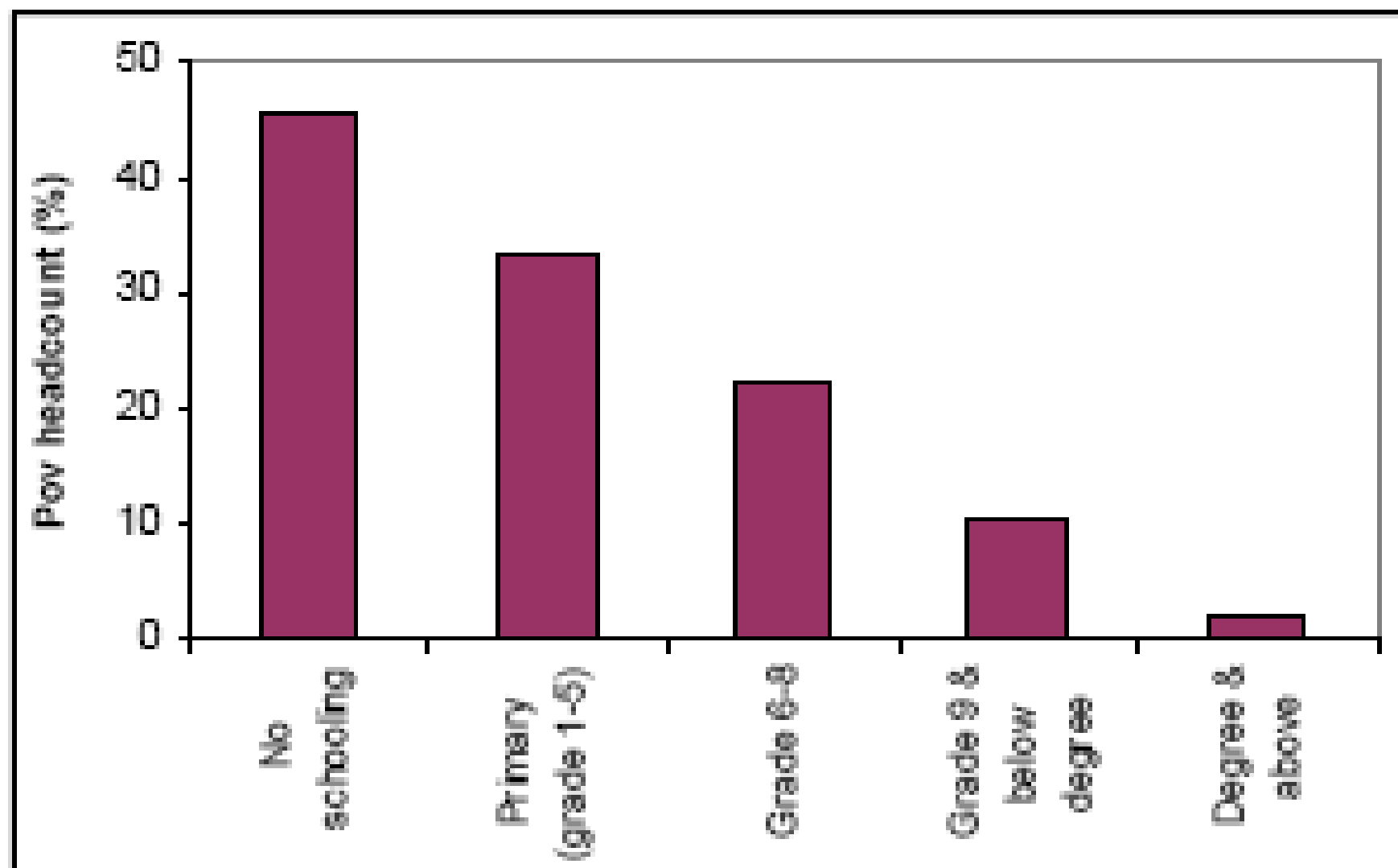
Source: National Education Research and Evaluation Centre, University of Colombo.

Figure 5-3: Private tuition usage by quintile, 2003/04



Source: CFSES 2003/04.

Figure 5-4: Poverty and educational attainment of household head, 2002



Source: HIES 2002.

Table 5-3: Child nutrition and health status, by wealth quintiles and by sector, 2000

	<i>Percent children with low birth weight (<2.5 kg)</i>	<i>Percent children stunted (low height for age)</i>	<i>Percent children wasted (low weight for height)</i>	<i>Percent children underweight (low weight for age)</i>
<i>By wealth quintiles</i>				
Poorest	24.7	29.0	20.1	47.4
Richest	9.2	3.5	9.5	11.1
<i>By sector</i>				
Urban	13.7	8.3	8.9	17.8
Rural	17.3	14.1	16.8	31.0
Estate	30.0	37.0	12.5	45.7
Population average	17.4	14.6	14.8	29.3

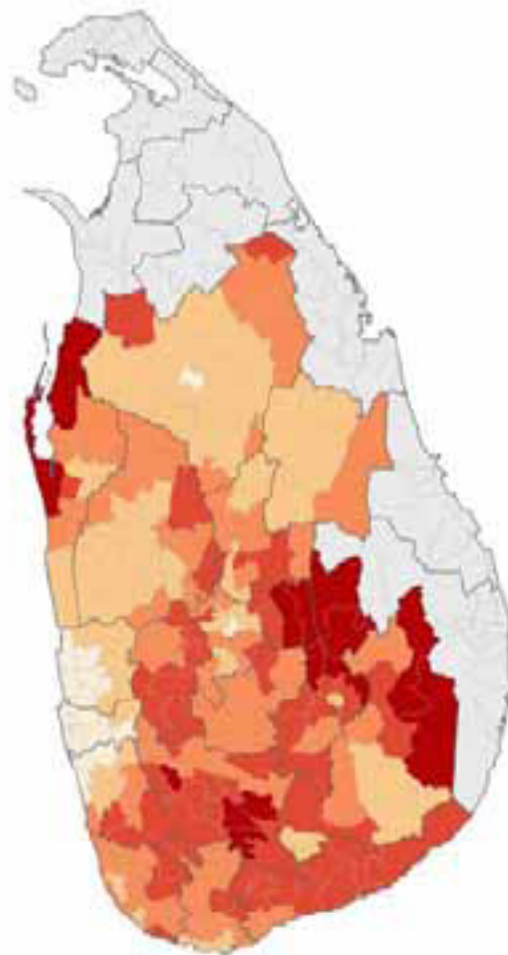
Notes: Refers to children aged 3-59 months whose heights and weights were measured.

Sources: World Bank staff calculations using Sri Lanka Demographic and Health Survey (2000).

Figure 6: (a) Poverty estimates for DS divisions

Headcount (%)

2.1 - 12.5
12.5 - 21.5
21.5 - 28.3
28.3 - 36.4
36.4 - 51.8



(b) Accessibility index at DS division level

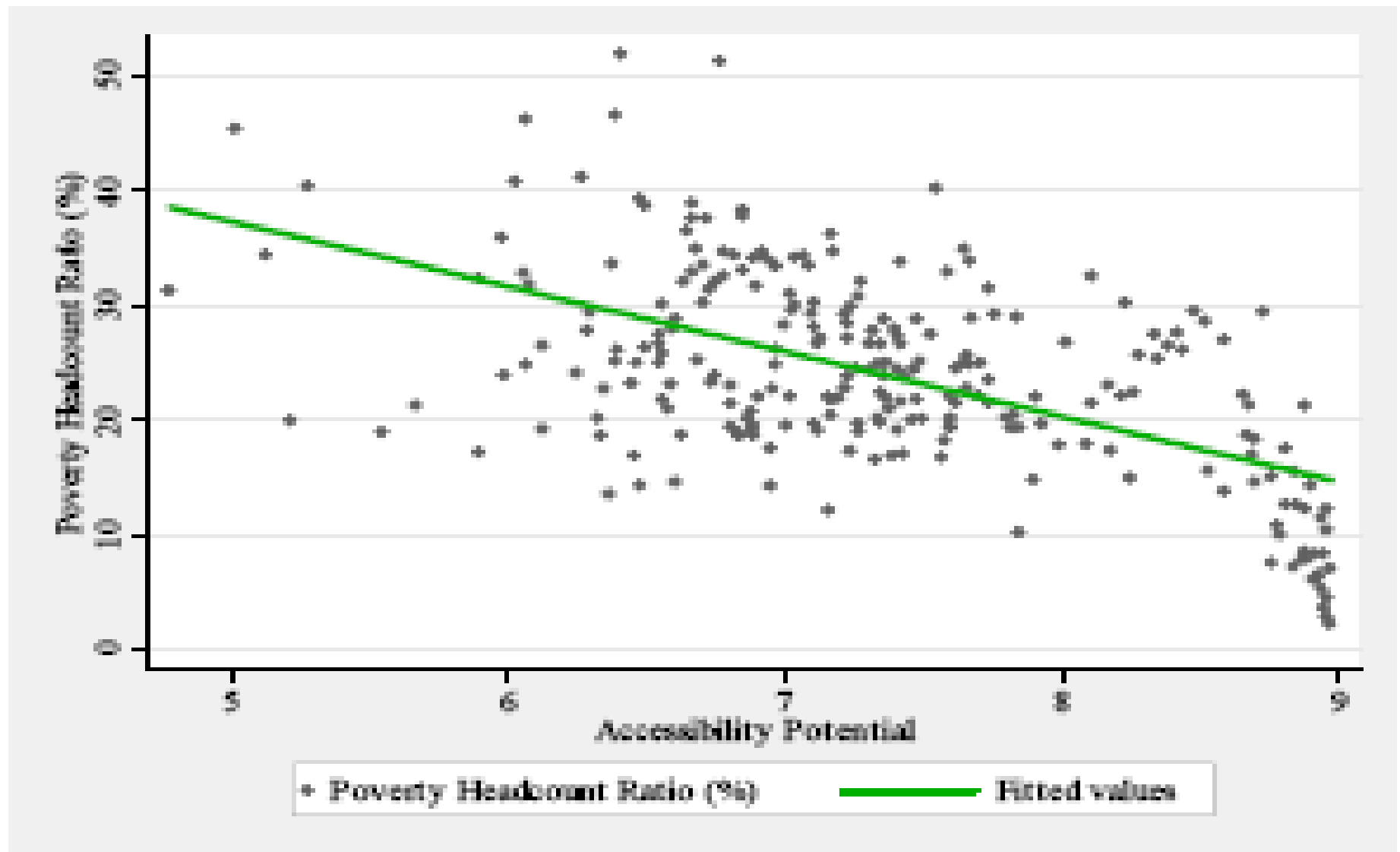
low

high

Note: The accessibility index is calculated for every point as the sum of the population totals of surrounding cities and towns inversely weighted by the road network travel time to each town. This map shows the mean of the access values for all points that fall into a given DS unit. The index is a measure of potential market integration reflecting the quality and density of local transportation infrastructure, including 185 cities and towns in the analysis.

Source: Poverty map from DCS 2004; accessibility map based on staff calculations.

Figure 3-7: Poverty headcount and access to urban centers at DS division level



Source: DCS (2004); World Bank staff calculations

Thank You