

Community Based Social Protection in Thailand: Innovation and Opportunity

Workshop on Financial Crisis and
Social Protection in Thailand

11 September 2009

Community Based Social Protection (CBSP)

- Social protection globally means protection of families against risk from harmful events
- Community-based means communities take the lead, in Thailand and globally, as opposed to the government or non government organizations
- “Community based” known elsewhere as “community driven development”
- Communities design their SP program, they mobilize resources for it, and they implement and monitor it
- Funds for community based social protection can come from governments, civil society organizations, international donors, or from the community itself

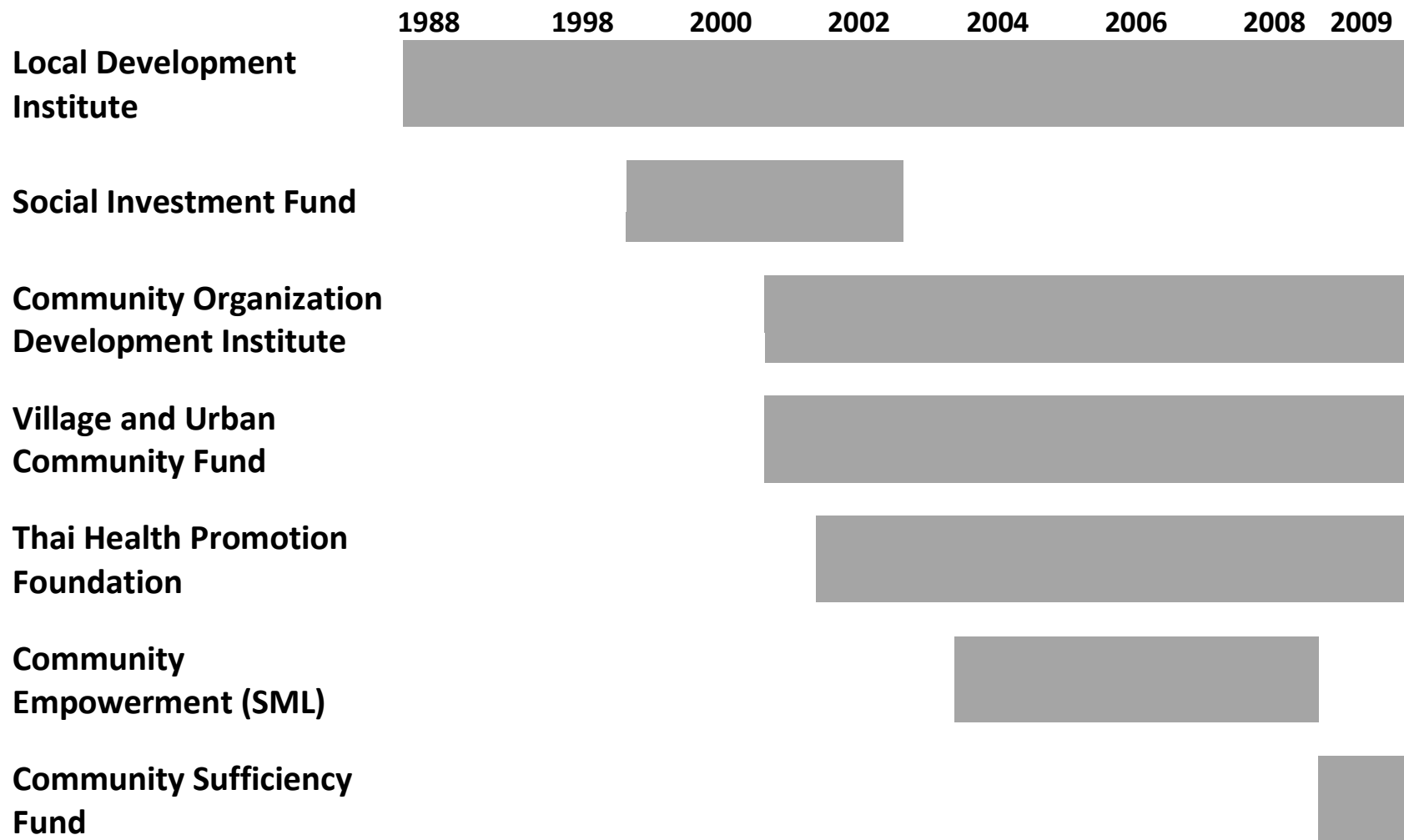
Community Based Social Protection Mechanisms

- Communities globally manage a wide range of social protection mechanisms:
 1. Cash transfers to indigent, disabled, poor students, elderly poor in hard times
 2. Credit schemes and revolving funds, micro and larger
 3. Insurance schemes to protect against poverty in old age, catastrophic health costs, crop failures, natural disaster
 4. Project grants to provide jobs for unemployed and assets for the community during crisis
 5. Rescue and relief of hard hit families with shelter, clothing, food

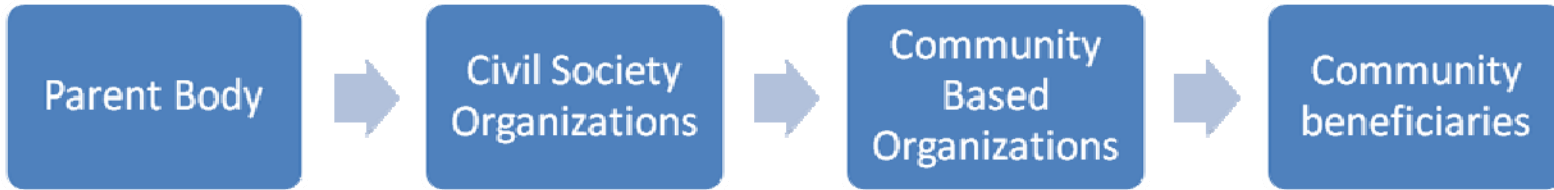
Community Based Social Protection in Thailand

- In Thailand the government has financed different institutions and programs to undertake community based social protection
- What to include and exclude from CBSP is not a simple question in Thailand
- Many community oriented agricultural projects have strong elements of CBSP, so do local infrastructure projects
- Here we will focus on several Thai programs that have been “community-based”, national in scale, and aimed at short and long term protection

Evolution of Community Based Social Protection



MODEL A: High Intermediation (Social Investment Fund, CODI)



MODEL B: Low Intermediation (Village Fund, SML)



MODEL C: Capacity Building (LDI, CODI)



Results - Disbursements

- Model A expected to disburse slowly (too many layers), but has beat expectations
- Model B expected to disburse (VF), but overwhelm village management, also beat expectations
- Model C supports both Model A and B

Results – Pro-poor, pro- governance?

- Model A may be pro-poor, but not evaluated
- Model B (VF) evaluated formally and strongly pro-poor
- Model A strong governance performance, high transparency, high CSO/CBO vigilance
- Model B questions on beneficiary selection, use of funds

Results - Protection

- Model A and B mostly focused on longer term strengthening of community economy and social capital
- Short term protection undertaken by SIF (Menu 5) with revolving beneficiary payments to people hard hit by crisis
- Menu 5 expanded rapidly, may have done well on targeting, and actually revolved the payments from one beneficiary to the next (highly innovative globally)

CBSP and Crisis

- CBSP should fit within overall SP strategy in Thailand and globally - complementarity
- Absence of short term protection in current CBSP programs – no social assistance
- Government based SP programs offer short term social assistance and unemployment insurance, but weighted heavily to formal sector workers

Opportunities

- SP strategic framework - revision and renewal?
- CBSP – revival of Model A? Short term social assistance?
- Sufficiency Community program – vehicle for CBSP reforms?
- Government based SP – safety net enhancements?