

# **Landlocked or Policy Locked?**

## **– Services Trade Policies and Economic Isolation**

Ingo Borchert, Batshur Gootiiz, Arti Grover and Aaditya Mattoo

The World Bank

Development Research Group –  
Trade and International Integration

**5<sup>th</sup> Midwest International Economic Development Conference**

**16 April 2011**

# Motivation

---

- Telecom, air transport are “linkage” sectors vital for a country’s international connectedness
- Many landlocked countries exhibit sub-average teledensity and air connectivity
  - Nepal telecommunications: 5<sup>th</sup> lowest teledensity / world
    - Duopolies in both fixed line and mobile segment
    - Weak regulatory framework
  - Zambia air transportation:
    - partial YD implementation, denial 5<sup>th</sup> freedom rights
    - jet fuel prices

# Research Questions

---

Such outcomes depend on geography, infrastructure, trade policies and other fundamentals

- ⇒ Can concentrated markets and poor performance be attributed to poor policy?
- ⇒ If so, why do policies seem to reinforce geographic disadvantages?

# Agenda

---

1. Services Trade Policies and Performance
  - a. Motivation
  - b. Literature
  - c. New WB Services Policy Restrictiveness Database
2. Political Economy of Trade Openness
3. Empirical Results
  - a. Telecommunications
  - b. Air Transportation
4. Conclusions

# Literature

---

- 1) Effect of infrastructure on LLC trade costs
  - Limao and Venables (2001)
  
- 2) Competitiveness, pricing and market regulation in African trucking sector
  - Arvis, Marteau and Raballand (2010)
  - Raballand and Macchi (2009)
  - Raballand, Kunaka and Giersing (2008)
  - Dihel and Shepherd (2007)

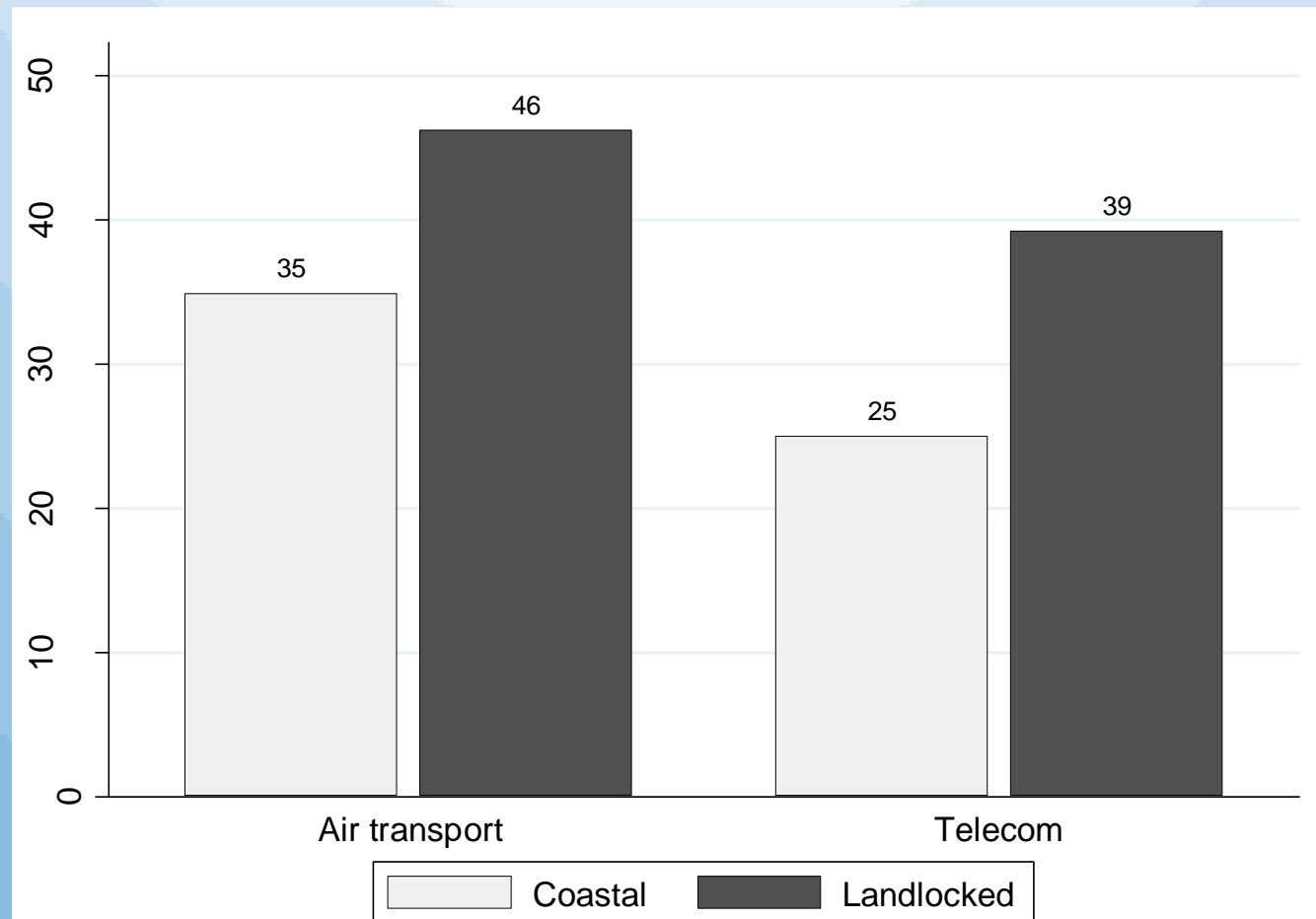
# Data on Services Policies

---

- 103 countries (81 coastal, 22 landlocked)
- Services sectors:
  - Fixed and mobile telecom (commercial presence)
  - International air transport (cross-border trade)
  - [financial, insurance, maritime, road, retail, prof serv]
- Multiple policy dimensions but focus on discriminatory policy measures
  - Market entry and ownership
  - Operations and regulatory environment
  - Provisions of Bilateral Air Service Agreements (BASAs)
- WB “Services Trade Restrictiveness Index” (STRI)

# The Policy Wedge

Landlocked countries potentially reinforce rather than compensate their geographic disadvantages:



# Political Economy

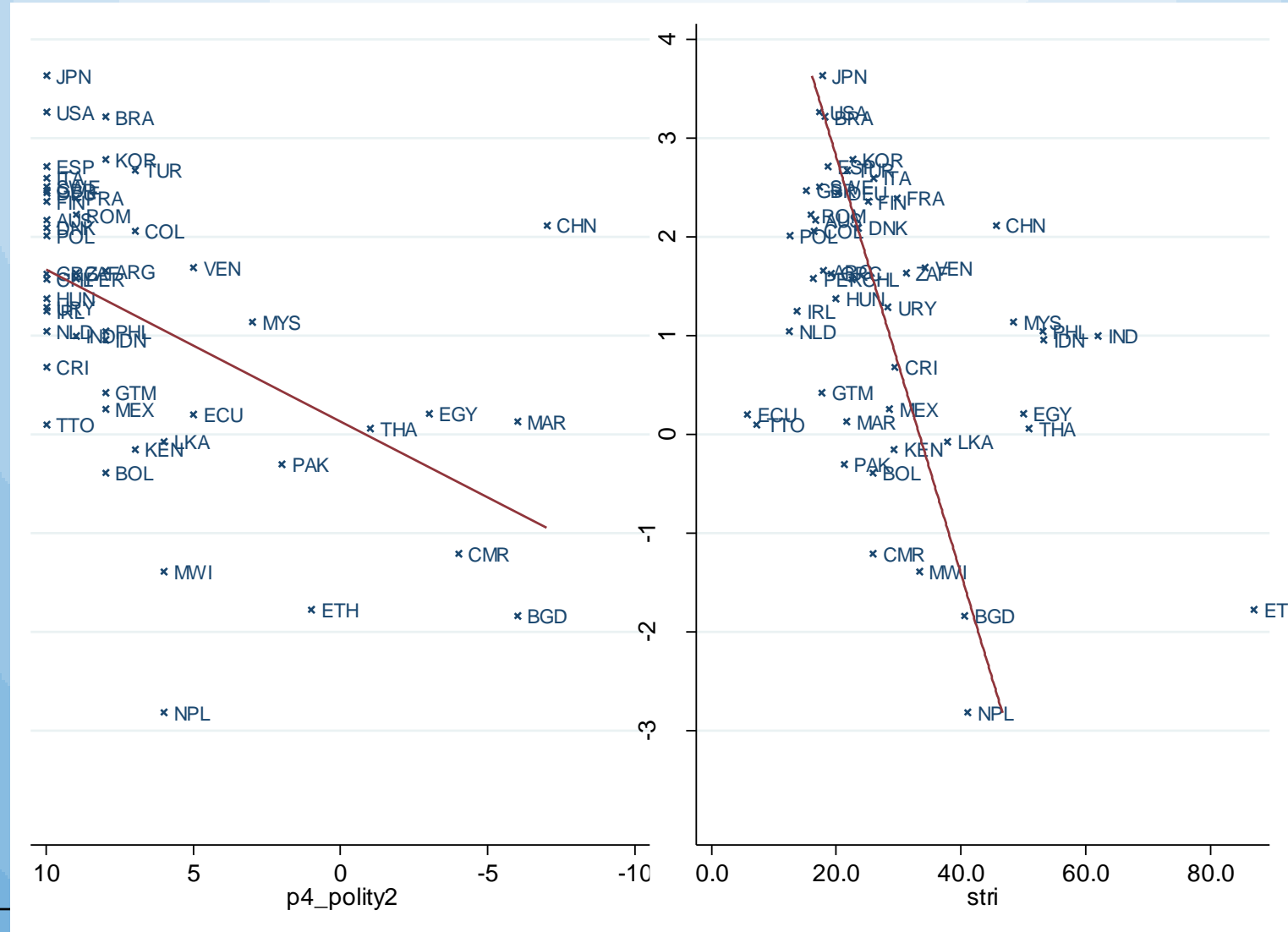
---

- Grossman and Helpman (1994) ‘protection for sale’
  - Producer concentration and lobbying power
  - Low demand elasticity (and its link to geography)
  - Baldwin/Robert-Nicoud (2007) on sunk costs, contestability

→ Reverse causality
- Political institutions constrain responsiveness to lobbying:  
GH measure of gov’t ‘welfare-mindedness’
  - Institutions affect policy choices through accountability:  
Democracy index (Polity IV project)
    - Mitra, Thomakos and Ulubaşoğlu (2002) on Turkey
    - Gawande, Krishna and Olarreaga (2009) estimations



# Political Economy



# Results: Telecom Market Structure

	(1)	(2)	(3)	(4)	(5)	(6)
		Fixed line			Mobile	
	OLS	OLS	IV	OLS	OLS	IV
Log GDP (2007)	-743.4872*** (144.0017)	-798.2878*** (133.2533)	-809.0922*** (144.2164)	-375.9854*** (108.2153)	-430.3521*** (116.0360)	-434.3159*** (113.7538)
Log GDP p.c. (2007)	337.5251 (290.1874)	408.2233 (261.1358)	594.7895* (309.7016)	453.5335** (173.6483)	583.2758*** (182.1849)	658.5521*** (184.0177)
Urban population (% of total)	-4.6006 (13.5589)	-4.2191 (14.1653)	-10.0375 (15.8076)	-3.3924 (8.1750)	-6.7183 (8.6059)	-7.4386 (9.6040)
Population Density (people/sqkm)	-0.4287 (0.8240)	-0.2019 (0.6933)	-0.7863 (0.9776)	-0.1279 (0.4793)	-0.3848 (0.5504)	-0.5329 (0.6303)
LLC Dummy	-1209.7363*** (455.2252)	-728.4651 (465.9156)	-1042.8145** (495.3117)	281.7894 (336.2588)	-10.0693 (377.2240)	-101.0782 (389.1188)
Africa Dummy	851.3010 (553.7653)	909.5038* (526.0141)	741.3573 (572.6307)	674.7607* (398.9616)	632.0786 (438.5653)	434.1480 (504.4995)
License Limit	1636.2611*** (454.2623)			494.1309 (408.7319)		
Public Lic Criteria	-948.1628* (485.0377)			-2543.2939*** (810.1150)		
Foreign Ownership Limit	-15.1185* (7.6787)			-15.4296** (6.7105)		
Indep Regulator	552.6018 (477.1015)			-125.5950 (335.9401)		
STRI Fixed Line		1338.7055** (564.5126)	3787.6651*** (1.4e+03)			
STRI Mobile					2830.4262*** (798.9577)	4434.4475*** (1.6e+03)
Constant	10423.0639*** (1.9e+03)	8018.9008*** (1.8e+03)	6199.9453*** (2.2e+03)	6154.8811*** (1.5e+03)	1099.5716 (1.5e+03)	165.6405 (1.7e+03)

# Results: Telecom Access

	(1)	(2)	(3)	(1)	(2)	(3)
	F-OLS	F-OLS	F-IV	M-OLS	M-OLS	M-IV
Log GDP (2007)	2.4746*** (0.6573)	2.3557*** (0.6778)	2.4097*** (0.6719)	-2.1839 (1.5264)	-2.2545 (1.4774)	-2.2555 (1.4775)
Log GDP p.c. (2007)	9.6955*** (1.7905)	10.0248*** (1.8087)	9.0947*** (1.7524)	23.0129*** (2.9013)	24.1328*** (2.6189)	24.1509*** (2.7118)
Urban population (% of total)	0.0085 (0.0647)	-0.0024 (0.0714)	0.0267 (0.0799)	0.1778 (0.1331)	0.1558 (0.1372)	0.1556 (0.1379)
Population Density (people/sqkm)	0.0032 (0.0035)	0.0052 (0.0038)	0.0082** (0.0038)	0.0072 (0.0121)	0.0072 (0.0120)	0.0071 (0.0120)
Africa Dummy	3.4644 (2.7466)	2.5261 (2.8603)	3.3690 (3.0360)	0.0528 (4.9500)	-0.4793 (4.6949)	-0.5268 (5.0101)
LLC Dummy	2.3882 (2.4563)	4.6915* (2.3725)	6.3080** (2.9229)	-2.0470 (3.9509)	-0.4325 (4.1121)	-0.4543 (4.2005)
Log HHI residual	0.0002 (0.0004)	-0.0001 (0.0005)	-0.0007 (0.0006)	-0.0041*** (0.0015)	-0.0036** (0.0015)	-0.0036** (0.0016)
STRI (F) = 0.25	-5.5564** (2.4903)			-12.9708** (5.6347)		
STRI (F) = 0.50	-1.1689 (2.5797)			-16.2788*** (5.5890)		
STRI (F) = 0.75	2.5276 (8.2894)			-28.9742*** (10.4050)		
STRI (F) = 1.00	-5.7834 (4.5554)			-17.3247** (8.3479)		
STRI Fixed Line		-4.0226 (4.0397)	-16.4599** (7.8692)		-27.9711*** (7.8014)	-27.5863 (18.7148)
Constant	-77.6332*** (13.7494)	-80.8423*** (13.2233)	-71.7368*** (13.0698)	-124.8579*** (22.2814)	-135.9442*** (19.7363)	-136.1684*** (21.7501)

# Results: Air Transportation

	(1)	(2)	(3)
	OLS-STRI	OLS-STRI	IV-STRI
Log GDP (2007)	0.5804*** (0.0381)	0.5903*** (0.0393)	0.6033*** (0.0460)
Log GDP p.c. (2007)	0.2824** (0.1255)	0.2757** (0.1224)	0.2510** (0.1233)
Urban population (% of total)	-0.0056 (0.0049)	-0.0056 (0.0049)	-0.0063 (0.0053)
Population Density (people/sqkm)	-0.0000 (0.0003)	-0.0001 (0.0003)	-0.0001 (0.0002)
Percent Tourists/Population	0.3151** (0.1359)	0.3282** (0.1325)	0.3313** (0.1321)
LLC Dummy	-0.1526 (0.1602)	-0.1657 (0.1585)	-0.1075 (0.1655)
Africa Dummy	0.1004 (0.1666)	0.0885 (0.1673)	0.1161 (0.1702)
airports paved runways	0.0000 (0.0001)	0.0000 (0.0001)	0.0000 (0.0001)
STRI intermed	-0.1486 (0.1319)		
STRI high	-0.4234*** (0.1317)		
STRI AirPass MO		-0.7003** (0.2738)	-1.4157* (0.8168)
Constant	5.8828*** (0.9141)	5.9809*** (0.8780)	6.4229*** (0.9164)

# Results: Air Transport (Decomp)

Intensive margin vs extensive margin:

	(1)	(2)	(3)
	OLS		
	F-STRI	F/A-STRI	A-STRI
Log GDP (2007)	0.5804*** (0.0381)	0.2000*** (0.0328)	0.3804*** (0.0346)
Log GDP p.c. (2007)	0.2824** (0.1255)	0.2427*** (0.0723)	0.0397 (0.0866)
Urban population (% of total)	-0.0056 (0.0049)	-0.0039 (0.0030)	-0.0017 (0.0033)
Population Density (people/sqkm)	-0.0000 (0.0003)	-0.0001 (0.0002)	0.0000 (0.0003)
Percent Tourists/Population	0.3151** (0.1359)	0.1126* (0.0570)	0.2026* (0.1042)
LLC Dummy	-0.1526 (0.1602)	0.0443 (0.1269)	-0.1967 (0.1590)
Africa Dummy	0.1004 (0.1666)	0.2669* (0.1468)	-0.1667 (0.1771)
airports paved runways	0.0000 (0.0001)	0.0001** (0.0000)	-0.0001 (0.0000)
STRI intermed	-0.1486 (0.1319)	-0.2907*** (0.0961)	0.1420 (0.1127)
STRI high	-0.4234*** (0.1317)	-0.4941*** (0.1106)	0.0707 (0.1346)

# Conclusions

---

- In telecom and air transport services, applied trade policies in landlocked countries almost twice as restrictive as in coastal countries.
- More restrictive policies lead to higher market concentration and more limited access to services.
- For best results on aid for trade effectiveness, addressing imperfect competition in services sectors could be as important as alleviating infrastructure bottlenecks.
- But countries (including landlocked) cannot unilaterally reform international transport

**Thank you for your attention!**