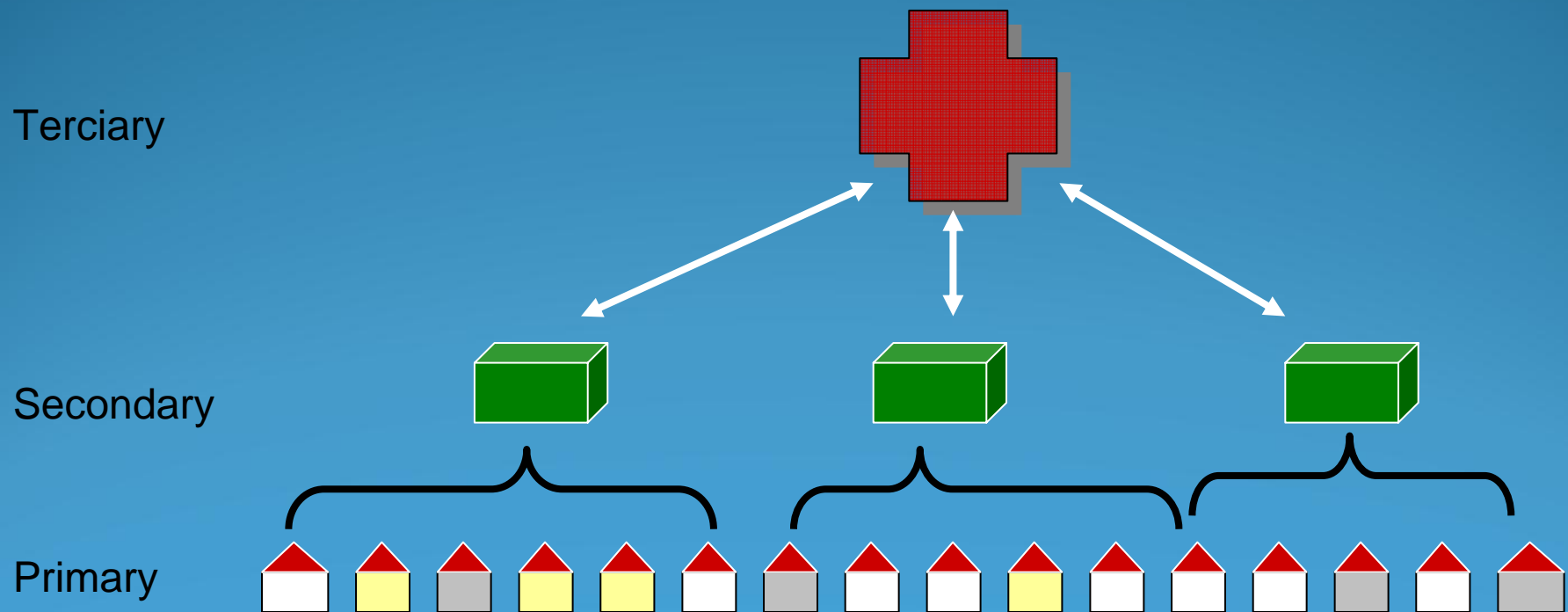
The image features a dark blue background with a decorative header at the top consisting of several overlapping, wavy lines in shades of light blue and cyan. The text is centered and presented in a clean, white, sans-serif font. The text is arranged in three lines: the first line reads "World Bank experience from", the second line reads "various health projects in Latin", and the third line reads "America".

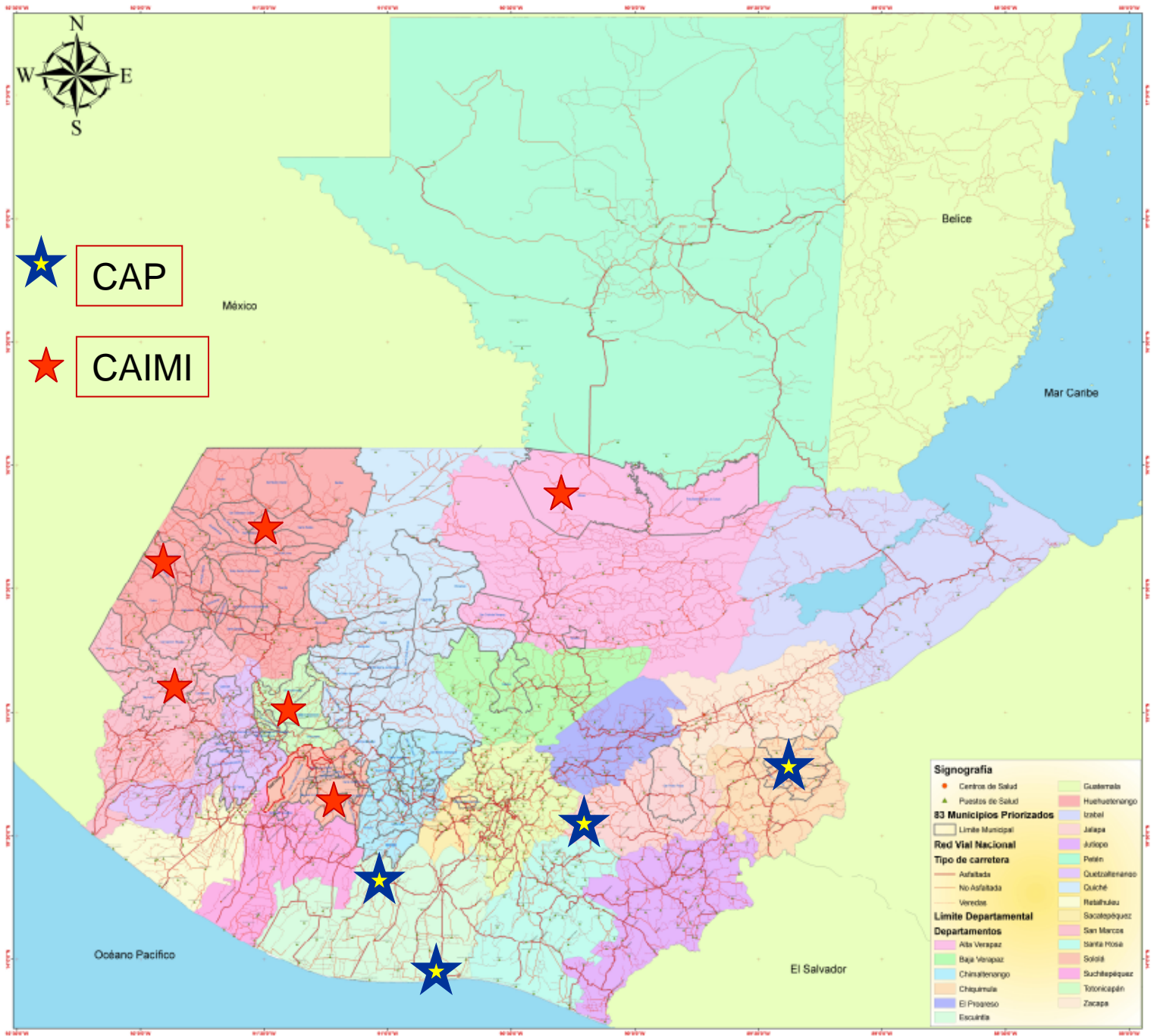
World Bank experience from
various health projects in Latin
America

Supporting Health Referral Networks



Supporting Health Referral Networks

**Ministerio de Salud Pública y Asistencia Social
Guatemala mayo 2008**



★ CAP

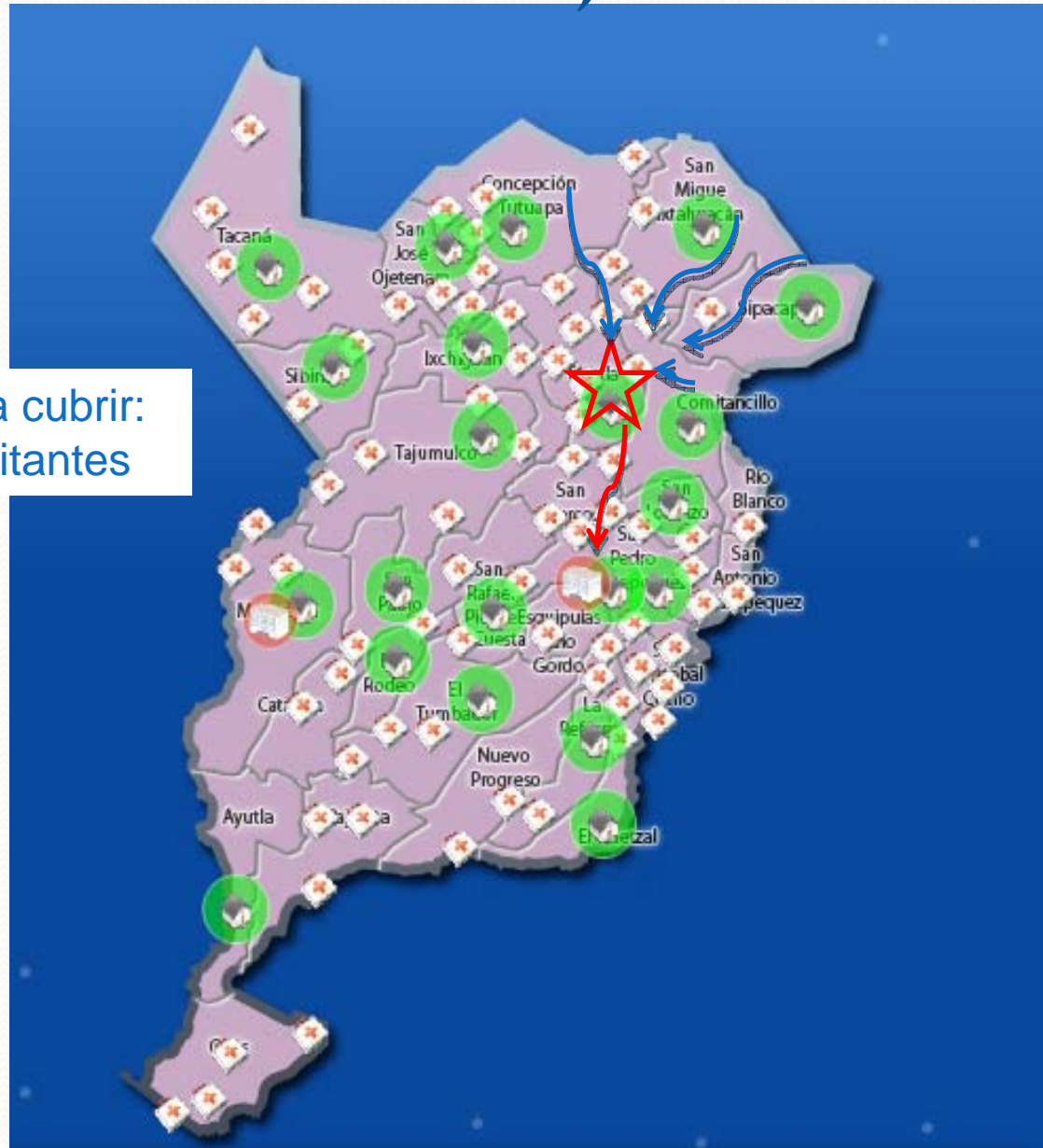
★ CAIMI

Signografía

- Centros de Salud
- ▲ Puestos de Salud
- 83 Municipios Priorizados
- ▭ Límite Municipal
- Red Vial Nacional
- Tipo de carretera
 - Asfaltada
 - No Asfaltada
 - Veredas
- Límite Departamental
- Departamentos
 - Alta Verapaz
 - Baja Verapaz
 - Chimaltenango
 - Chiquimula
 - El Progreso
 - Escuintla
 - Guatemala
 - Huehuetenango
 - Izabal
 - Jalapa
 - Jutiapa
 - Peten
 - Quetzaltenango
 - Quiché
 - Retalhuleu
 - Sacatepéquez
 - San Marcos
 - Santa Rosa
 - Solaná
 - Suchitepéquez
 - Totonicapán
 - Zacapa

SAN MARCOS CAIMI de Tejutla

Población a cubrir:
72,988 habitantes



TOTONICAPAN

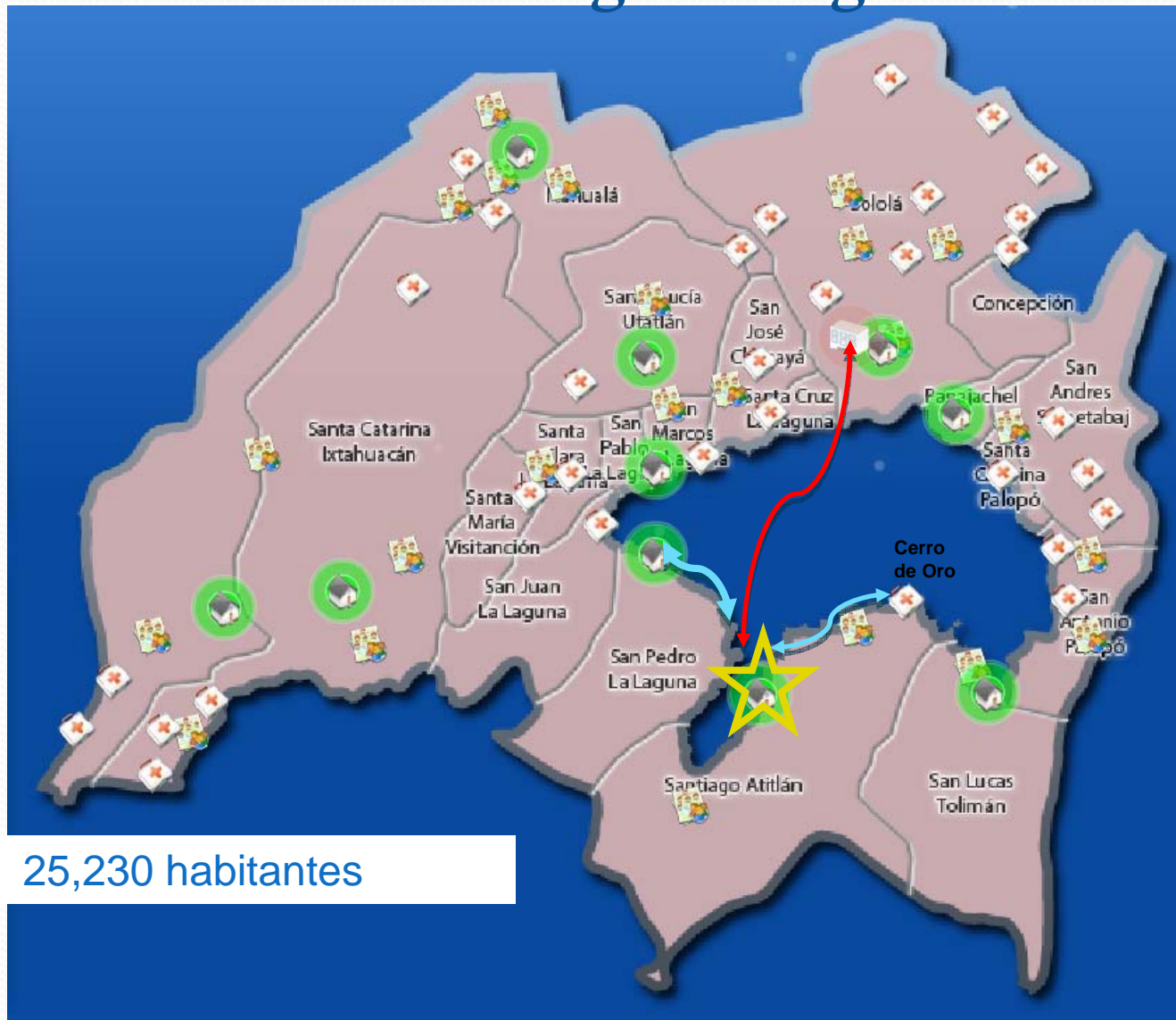
CAIMI de Momostenango



Población a cubrir:
44,413 habitantes

SOLOLA

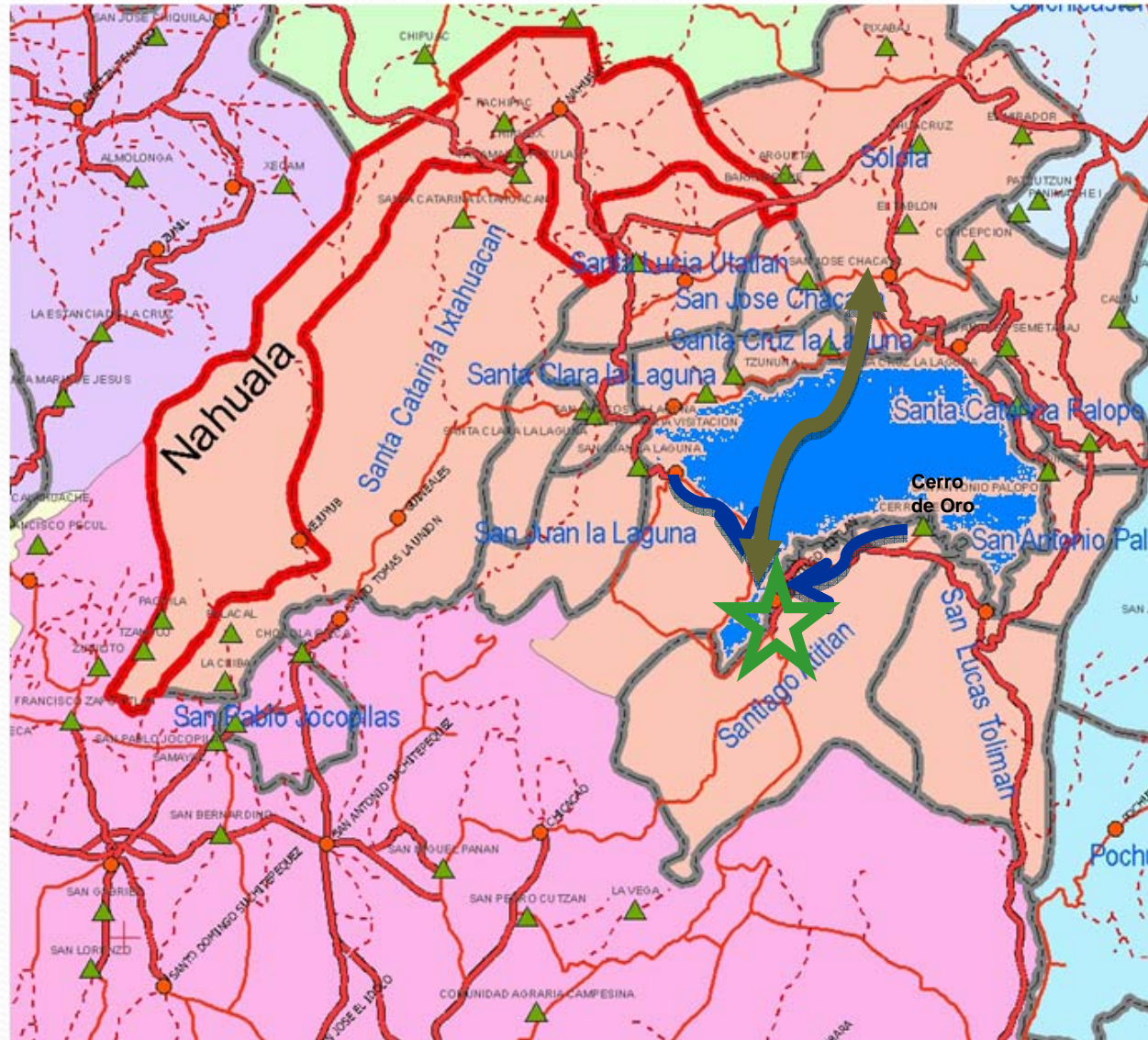
CAP de Santiago la Laguna



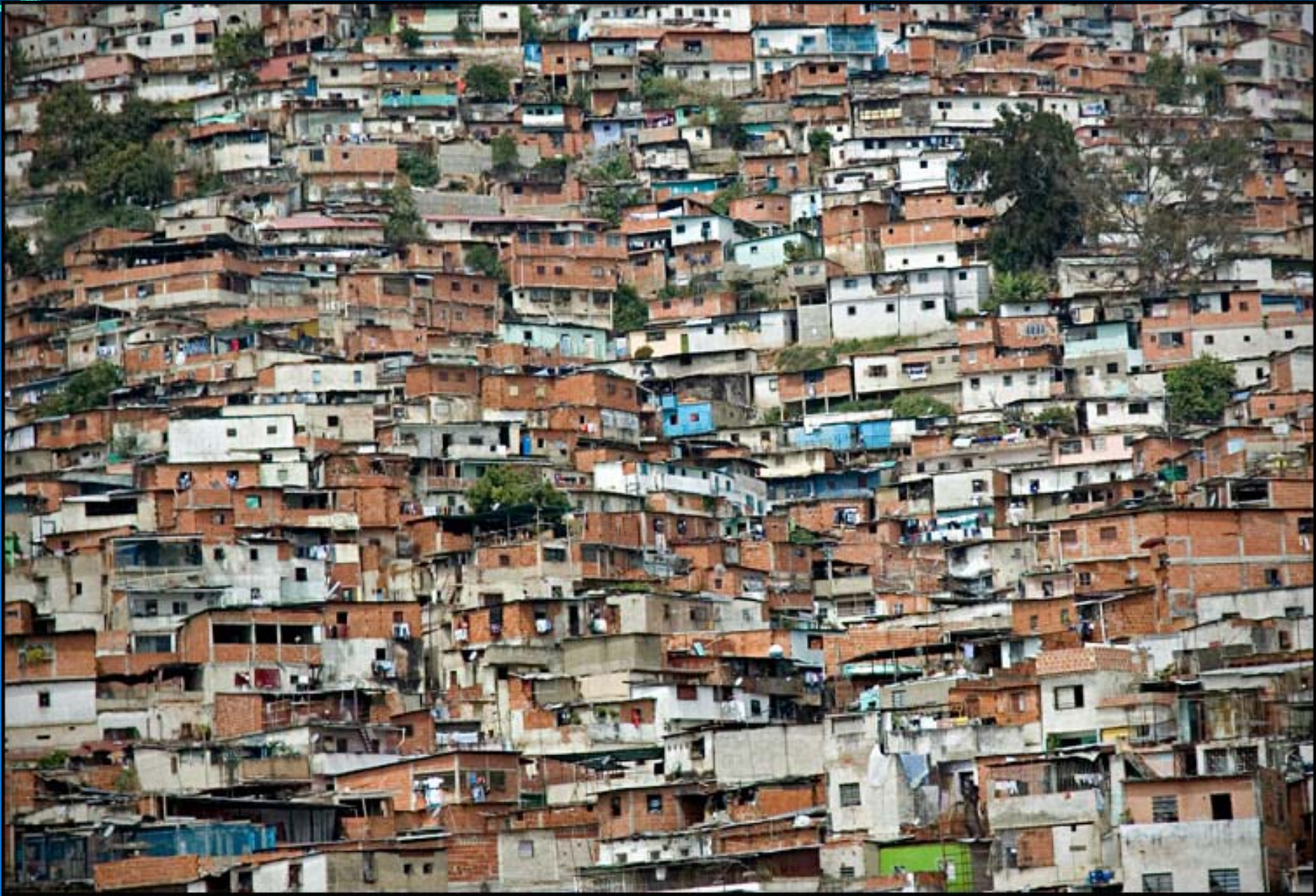
25,230 habitantes

SOLOLA

CAP de Santiago la Laguna





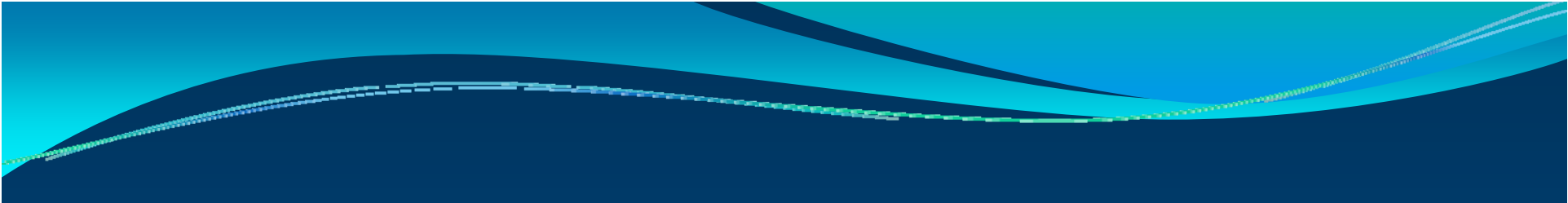


Improving timely Access

Health Emergencies

Caracas, Venezuela





Accessing the inaccessible

Amazonas, Ecuador

