

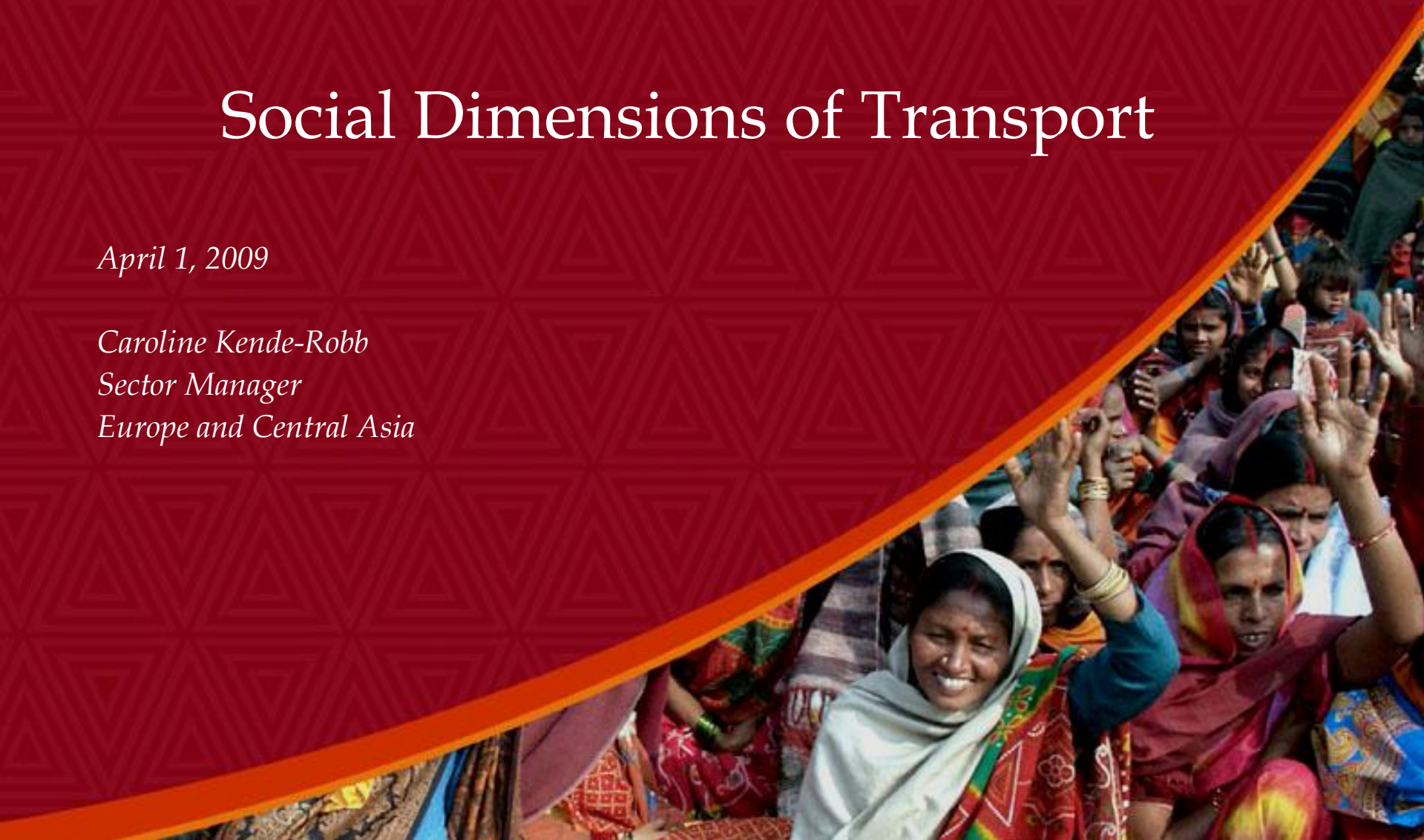


SOCIAL DEVELOPMENT
The World Bank

Social Dimensions of Transport

April 1, 2009

*Caroline Kende-Robb
Sector Manager
Europe and Central Asia*



Social Development at the World Bank

- In the World Bank, social development ensures that programs respond to social context and priorities of poor people, thus making programs more equitable and sustainable.
- Expanding Social Development from “do no harm” to “doing good”
 - 1985-1994
 - Originally about safeguards with a primary focus on minimizing negative social impacts on indigenous peoples and involuntary resettlement.
 - 1995-present
 - Social development contributes toward sustainable development, social justice, and peaceful societies.
 - Emphasis on the triple bottom line for sustainability – economic/financial, environmental and social.
 - Achieving a balance between promoting growth and providing access for poor and vulnerable populations.

Social aspects of transport

- Improve people's access and promote social inclusion
- Mitigate adverse impacts and manage political and social risk (PSIA)
- Enhance the demand for good governance through voice and participation
- Promote inclusion of most vulnerable and protect involuntarily displaced and Indigenous Peoples
- Support transport operations in conflict affected and fragile states

Improve people's access and promote social inclusion

- Social development approaches help
 - identify the needs of vulnerable, excluded and poor groups,
 - target interventions to meet their priorities, and
 - involve them in design, implementation and monitoring and evaluation to lower costs, enhance impact and promote local ownership.

Mitigate adverse impacts and manage political and social risks

- Analytic tools to
 - enhance understanding of the social and political risks that can obstruct operational progress and prevent investments (PSIA)
 - identify adverse impacts during the construction and operation of projects.
- Based on this analysis, Social Management Plans can be designed to mitigate these adverse impacts and manage risks thereby diminishing conflicts that could emerge if negative impacts are not addressed properly and on time.

Enhance governance and reduce corruption through voice and participation

- Social development helps improve governance and fight corruption by enhancing the capacity of citizens to demand good governance.
- Citizens need to know what resources are available, have a say in their allocation, and obtain the information they need to hold government accountable for delivering results.

Governance and anti-corruption

- The Bank traditionally focused public sector reforms – *the supply-side of governance*
- Social Development has developed approaches that emphasize civic engagement – *the demand-side of governance*
 - Participation in service delivery (community development)
 - Social accountability (score cards, expenditure tracking, social audits, participatory budgeting)
 - Rights and local governance
 - Combining supply and demand sides at local level

Promote inclusion of most vulnerable and protect involuntarily displaced and Indigenous Peoples

- Through the application of the Social Safeguard Policies, two of the most affected groups by transport projects – indigenous peoples and involuntarily displaced persons – are protected and included in the development process.

Support transport operations in conflict affected and fragile states

- Social development helps identify
 - risks to transport operations stemming from the socio-political context
 - the way that transport operations impact conflict dynamics
 - opportunities transport operations can offer to promote more cohesive and peaceful societies

Challenges

- Infrastructure portfolio tripled since 2003. The challenge is to ensure that these new investments are socially sustainable.
- In Africa, the necessary expansion of infrastructure and extractive industries will create additional pressure on weak governance structures.
- In addition, the global financial crisis presents new challenges.

Challenges

- This means doing business differently and going beyond social safeguards to include other key social development aspects:
 - **Access:** Promote social inclusion
 - **Risk:** Manage political and social risk (PSIA)
 - **Governance:** Increase the demand for good governance
 - **Conflict:** Support operations in conflict affected and fragile states