

Border Planning: Ciudad Juarez

Luis Felipe Siqueiros

- A divided and afflicted environment, community and urban space

- Without planning, or without tying planning to actions
- Unaware of their own reality
- Without consensus, decisions from the top
- Irrelevant weigh of natural resources
- Individual initiatives driven growth
- Short term vision
- Business oriented policies
- Without funds for infrastructure
- Poor and unstable public institutions: education, health, security, safety, child and age protection...
- Weak independent civic organizations and leaderships.
- Disrupted cultural references
- Unsolved property rights

Growth pattern

The 'Growth pattern' section contains four photographs. The top left shows a dirt road with a truck in a hilly area. The top right shows a fenced-in parking lot with several cars. The middle left shows a hillside densely packed with small, simple buildings. The bottom right shows a large, sprawling industrial or commercial area with many buildings and structures.

IN THE TERRITORY

- Infrastructure deficits
- Public facilities
- Transportation
- Sprawl
- Unregulated growth and Illegal settlements
- Lack of public and open spaces



EFFECTS

IN THE SOCIAL AND ECONOMIC CONDITIONS

- Poverty, low wages
- Untrained and uneducated population
- Raging crime, impunity
- Uprooted and disintegrated communities
- Incredibly low public investment (compared to private)
- Informal activities (+50% of the population)
- Improvisation, corruption and extensive illegal practices
- Inefficient public Administration

THE PLANNING EFFORTS

GOAL:

To generate hope for the border city

A

- participatory
- scientific
- innovative
- sustainable

planning practice

SOCIAL INFRASTRUCTURE

INSTITUTIONAL REFORM to cope with:

- Complex social and economic dynamics
- Accumulated deficits at an alarming level
- Planning and research downplayed or ignored, not considered essential to achieve social development
- Improvised public actions and works.
- Valuable resources wasted
- Unqualified personnel at local level, lacking a technical or professional profile.

And achieve:

- Continuity and efficiency in the planning process.
- Trained professional and highly qualified personnel.
- Technical authority for decision making. Reclaim the planning activity as a tool for development.
- Sustainable development.

OPERATIONAL SCHEME for the Planning Agency

BOARD

- Government: Federal, State, Municipal
- Private sector
- Civic organizations
- Professional associations
- Universities

PERMANENT STAFF

- Planning and Urban Design
- Transportation
- GIS
- Administration



Community

FEDERAL
STATE
LOCAL

CIVIL AND PRIVATE
ORGANIZATIONS

REGIONAL ENTITIES
(INTERNATIONAL)

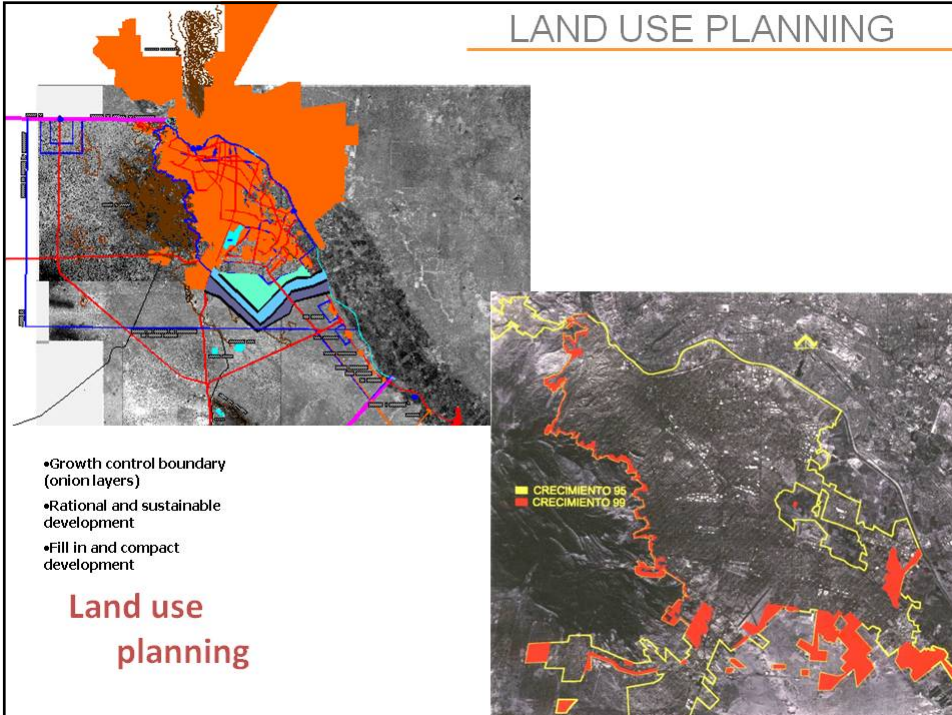
RESEARCH
INSTITUTIONS

RESULTS

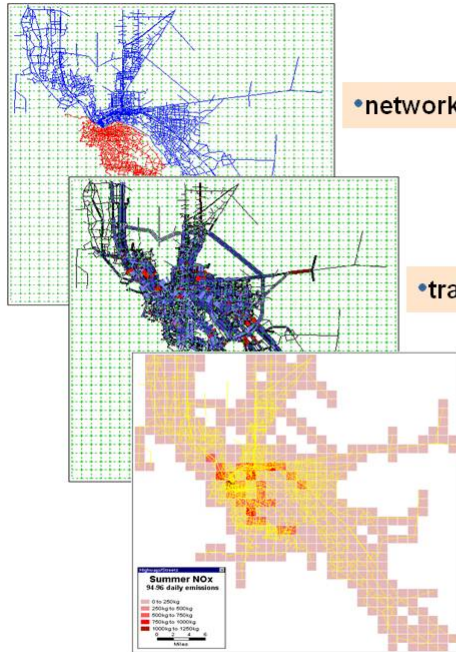
•EXAMPLES



LAND USE PLANNING



REGIONAL MODELING



•networks

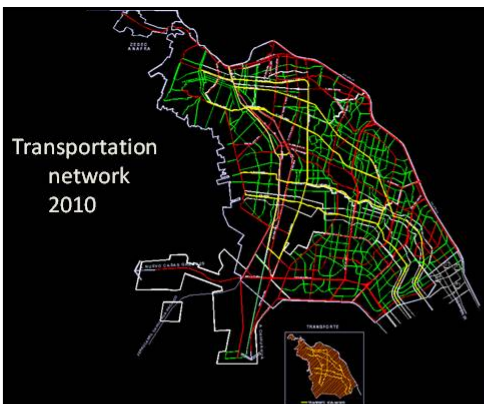
•travel models

•mobile source emissions

- 1997-2005
- Development of Travel demand Model.
- Travel model Summary
- Mobile Source Emissions Model
- Juarez roadway improvement survey (PM10, PM2.5 modeling from unpaved roadways).
- (Personalized Rapid Transit). Transborder travel model
- Juarez Truck model

Progresión de modelos: redes, tráfico, emisiones.

TRANSPORTATION PROJECTS



Projected and paved Roads 1996-2004



TRANSPORTATION PROJECTS

Planning efforts

NEIGHBORHOODS PARTICIPATIVE PLANNING

<p>2000</p>	<p>2004</p>
<p>2000</p>	<p>2004</p>

NEIGHBORHOODS PARTICIPATIVE PLANNING



URBAN RENEWAL: Downtown

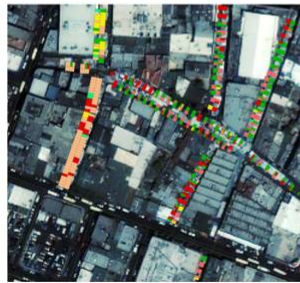
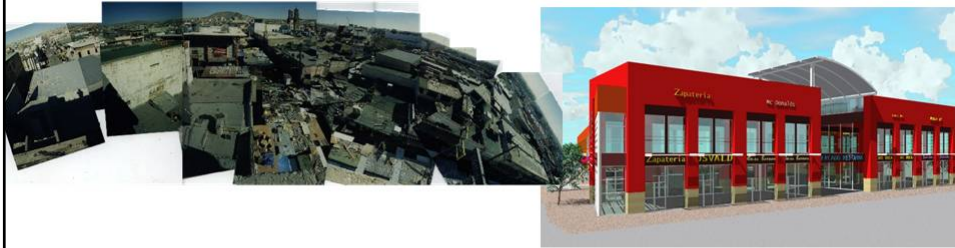


Historical Center rehabilitation and conservation

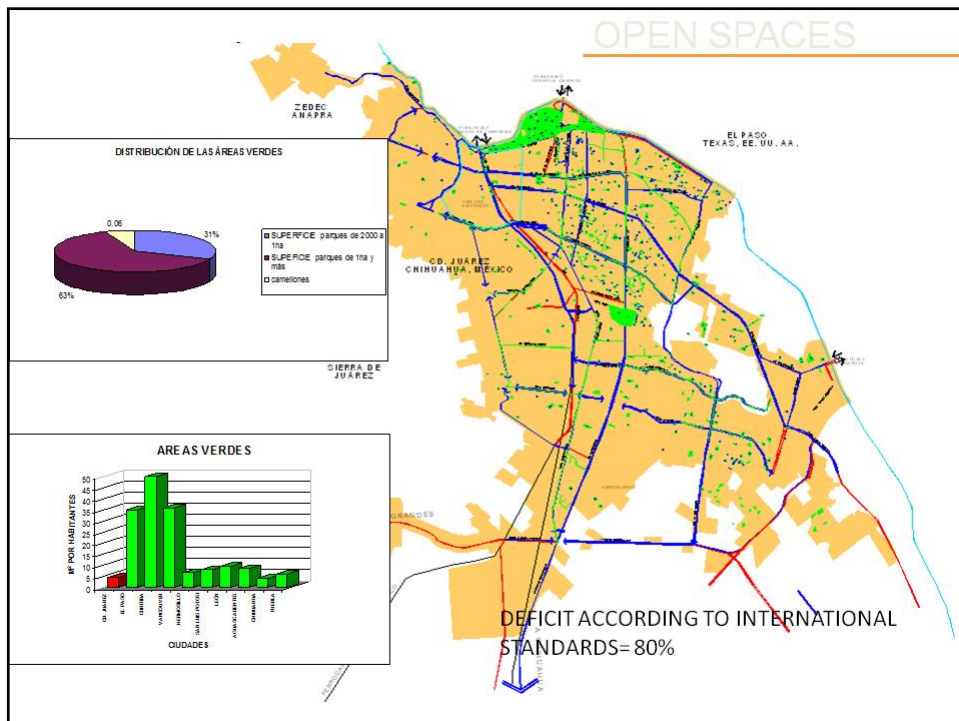
Protect missions, historical districts/sites



URBAN RENEWAL: Downtown



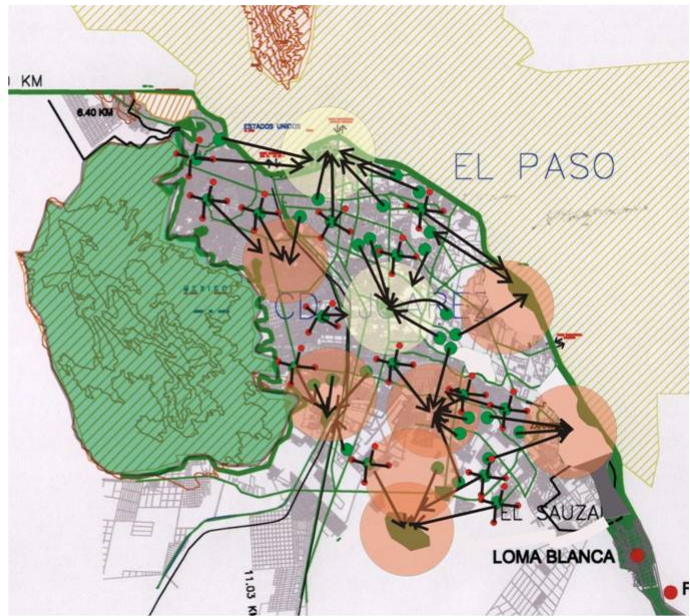
Final proposal:
Rebuilding Old Reforma
Theater (to relocate vendors)
(built 2003-04)



OPEN SPACES

**GREEN NETWORK
PROPOSED**

- Sierra,
- Desert,
- River bank,
- Metropolitan parks
- District parks
- Barrio parks



OPEN SPACES

District parks



WEAKNESS:

Approachable

- Lack of follow-up and implementation of plans and projects
- Poor capacities in the Local Administration for: regulation, promotion and enforcement
- Insufficient knowledge of IMIP's plans and projects by the common citizen
- Unsustainable Cultural practices
- Difficulties in making technical and consensus based decisions to prevail over interests
- Need of legal reforms: duplicity of functions and inexistent legal references.

High Complexity

- Economical and legal dependence of unstable political entities
- Lack of Civil Service (merit and commitment based)

