

WORLD BANK 2000

Entering
the **21st** Century
World Development Report 1999/2000

二十一世纪

THE
WORLD
BANK



Changing Development Landscape

(Integration of world economy)

Global



Nation-states

Local

(Dispersion of political power)



Changing Development Landscape

(Integration of world economy)

Global



Nation-states

Local

(Dispersion of political power)



Changing Development Landscape

(Integration of world economy)

Global



Nation-states

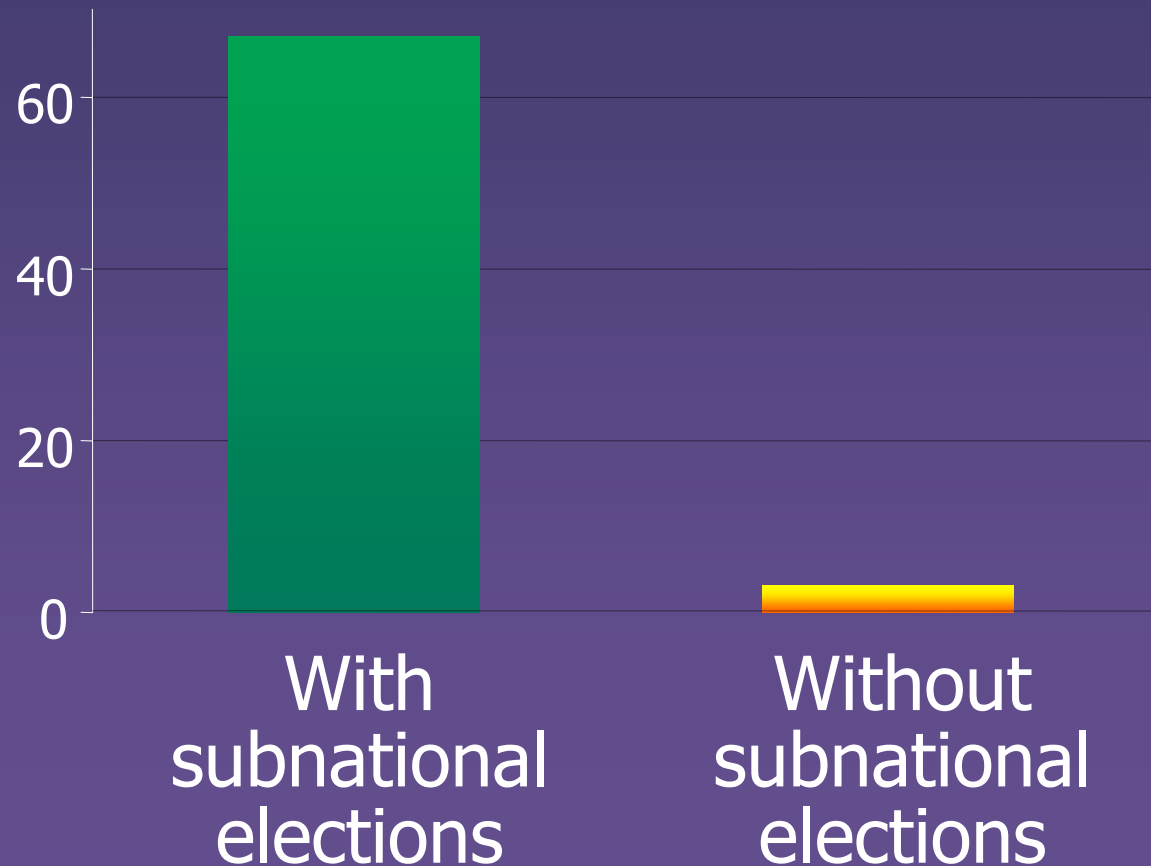
Local

(Dispersion of political power)



Democracies with Local Elections in 1998

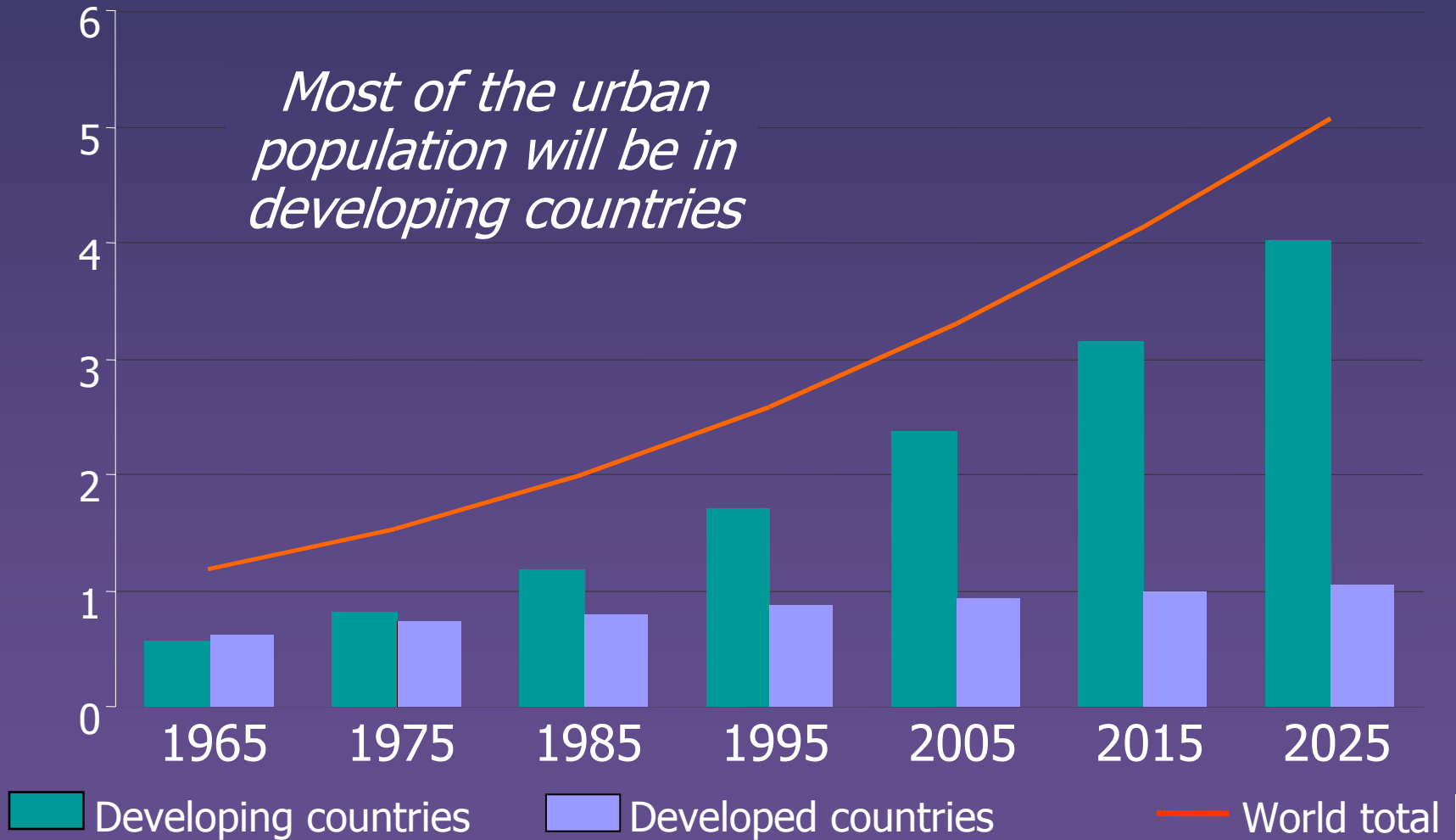
Number of democracies



Urban Population Growth

Urban population (billions)

Most of the urban population will be in developing countries

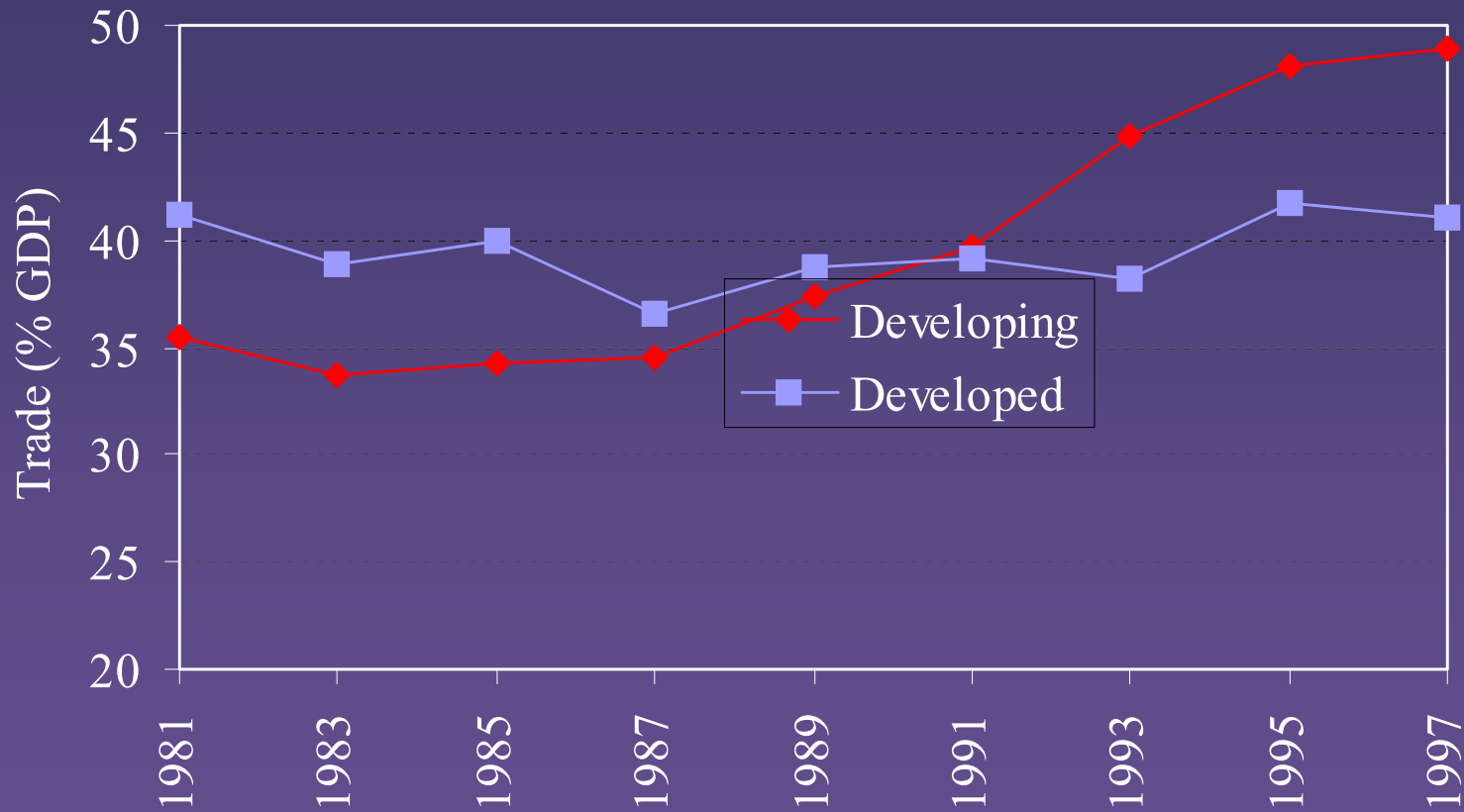


Urban Partnerships

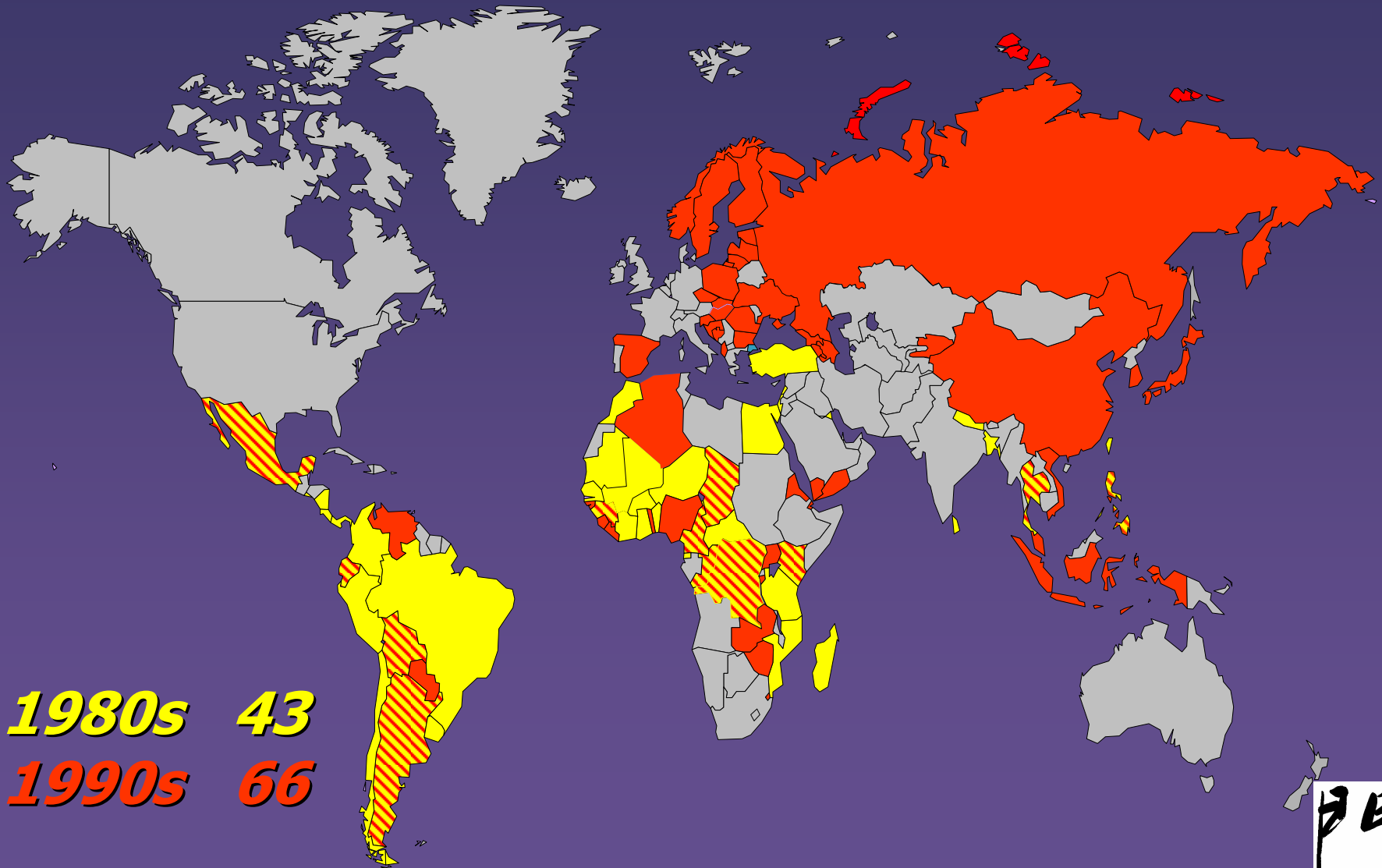
- Paraguay: water supply
- Pakistan: Orangi community sewerage project
- Philippines: transportation
- Indonesia: Kampung slum upgrading



Trade is Growing Much Faster Than Income in Developing Countries

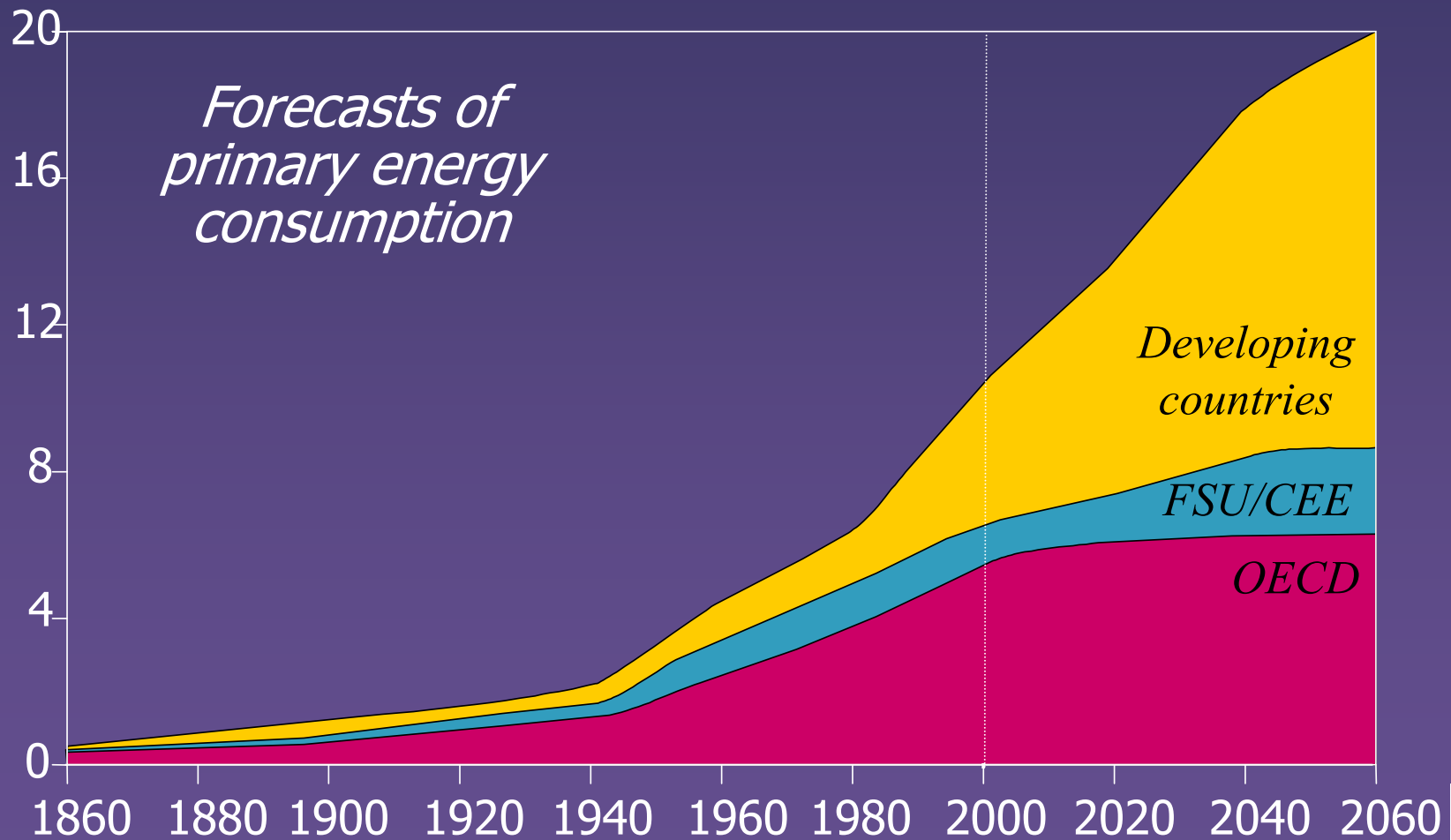


Incidence of Banking Crises



Participation of Developing Countries is a Must to Prevent Environmental Damage

Gigaton Oil Equivalents



WORLD BANK 2000

Entering
the **21st** Century
World Development Report 1999/2000

二十一世纪

THE
WORLD
BANK

