

August

2008



PALTRADE

PALESTINE TRADE CENTER

**Gaza Terminals
Movement Monitoring
Monthly Report**

Published by PalTrade on: Sep23, 2008

**"Cargo Movement and Access Monitoring
and Reporting" Project**

October 1st, 2007 – October 30th, 2008

Contract No. 7144585



Financed by:
Norwegian Consultant Trust Fund



Under the supervision of:
The World Bank
(MNSD) Finance and Private Sector Unit

Head Quarter Office
P.O Box 883
Ramallah, Palestine
Tel. +970 2 240 8383
Fax. +970 2 240 8370

Gaza Office
P.O Box 5180
Gaza, Palestine
Tel. +970 8 283 3539
Fax. +970 8 283 3549

info@paltrade.org

www.paltrade.org

© Palestine Trade Center, PalTrade, 2008

OUTLINE

SECTION 1: GAZA TERMINALS PERFORMANCE

A. Performance Summary	<i>page 3</i>
B. Operations Performance (Days & Hours)	<i>page 4</i>
C. Export Performance	<i>page 4</i>
D. Import Performance	<i>page 5</i>
E. Terminals Performance Trends	<i>page 6</i>
F. Nahal Oz Entry Point Performance	<i>page 8</i>

SECTION 2: SECTOR PERFORMANCE

A. Summary of Sectors Performance	<i>page 10</i>
B. Terminals Closure Impact on Furniture Sector	<i>page 10</i>
C. Terminals Closure Impact on Garment Sector	<i>page 11</i>
D. Terminals Closure Impact on Cash Crops Sector	<i>page 11</i>
F. Terminals Closure Impact Construction Sector	<i>page 11</i>

SECTION 3: ISSUE OF THE MONTH

Imminent Shutdown Threatens The Only Pharmaceutical Company In Gaza	<i>page 12</i>
--	----------------

SECTION 4: TERMINALS UPDATES FOLLOWING THE TRUCE *page 13*

ANNEXES

Annex 1:	<i>page 14</i>
Project Overview	
Annex 2:	<i>page 15</i>
Gaza Terminals Overview	
Annex 3:	<i>page 16</i>
Classification of Imports Through AlMontar/Karni,Sufa and Karem Abu Salem/ Kerem Shalom - August 2008	
Annex 4:	<i>page 17</i>
Fuel Imports through Nahal Oz-August 2008	
References & Sources:	<i>page 18</i>

SECTION I: GAZA TERMINALS PERFORMANCE

A. PERFORMANCE SUMMARY

As a result of the closure imposed on the Gaza Strip starting June 12, 2007: **AIMontar / Karni Terminal** was officially closed for both imports and exports. However the terminal re-opened on June 28, 2007 for limited imports of goods such as wheat and animals feed. Since then, **Sufa and Karem Abu Salem / Kerem Shalom Terminals** are used as alternative terminals for the limited imports of goods classified as humanitarian needs, which consist of basic food (e.g. wheat flour, rice, pulses, cooking oil), animal feed and medical equipment, in addition to humanitarian aids delivered by UNWRA, the World Food Program (WFP), Red Cross, WHO, and others. These commodities are distributed to pre-identified beneficiaries of these organizations. **Beit Hanoun/ Erez Terminal** is rarely used for entry of medical supplies (humanitarian aids). **Rafah** commercial operations were completely halted.

This month **AIMontar / Karni Terminal** was opened for 14 days to allow the crossing of 1588 truckloads of aggregates, silo cement, grains and animals feed which were transferred via a conveyor belt. **Sufa** was operated for 19 days to allow crossing of 1314 truckloads of imports into the Gaza Strip. **Karem Abu Salem/Kerem Shalom crossing** was opened for 6 days to allow the crossing of 321 truckloads of imports. **Nahal Oz Entry Point** was opened for imports of liquid fuels, however this month, despite the trivial improvement on the fuel and gas quantities were insufficient, where fuel supplies (benzene and diesel – excluding industrial gasoline) are about 51% below the current estimated need*, and the cooking gas supply is also about 48% below the current estimated need.

Despite the announcement of the truce "hudna" that was agreed upon on June 19, 2008 and took effect on June 22, 2008, new commercial goods were allowed to enter Gaza Strip including aggregates, cement, construction metal (2 truckload only), wood, car tires, clothes, shoes, and juice. The quantities of imported goods are very limited that fall below the minimum estimated needs of Gaza Strip.

*Reference: Petroleum & Gas Station Owners Association-Gaza Strip.

B. TERMINALS OPERATION

AlMontar/Karni was opened for only 14 days, Sufa terminal was opened for 19 days, and Karem Abu Salem/Kerem Shalom crossing was opened for only 6 days, the table below shows performance of all commercial terminals in terms of operation times and cargo movement capacity during July and August 2008.

Terminal	AlMontar / Karni		Sufa		Karem Abu Salem / Kerem Shalom	
	July	August	July	August	July	August
Indictors / Month						
Available opening days	27	26	27	26	27	26
Actual opening days	20	14	25	19	0	6
Closure days	7	12	2	7	27	20
Total imports (truckloads)	2886	1588	1829	1314	0	321
Daily average of imports of opened days	144	113	73	77	0	54
Daily average of imports of available days	107	61	68	51	0	12

C. EXPORT PERFORMANCE*

Approximately 8500 truckloads used to be exported every year through AlMontar/Karni terminal, since June 12, 2007 only 124 truckloads of agricultural crops were exported through Karem Abu Salem/Kerem Shalom crossing. The last exported shipment from the Gaza Strip was on January 17, 2008 and included cut flowers, and since then all export operations were halted.

* Export term is used for shipments that cross out of the Gaza Strip through any of the official trade terminal, regardless of destination.

D. IMPORT PERFORMANCE *

A total of 3,223 truckloads were entered into the Gaza Strip, the imported goods were aggregates (25%), foodstuff including basic commodities (23%), fruit and vegetables (11%), animals feed(12%), and dairy and frozen products (8%). About 1% were humanitarian aids and 99% were commercial goods that are classified as humanitarian needs for the people in Gaza Strip.

Terminal	Imports (Truckload)	Percentage
AlMontar / Karni	1588	49%
Sufa	1314	41%
Karem Abu Salem / Kerem Shalom	321	10%
Total Imports	3223	100%

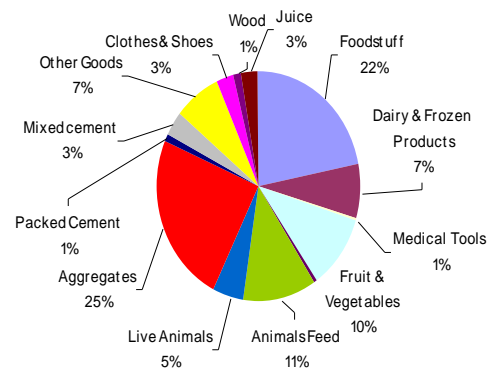


Figure (1): Imported goods through all terminals in August 2008

Following the announcement of the truce, limited types of consumption and industrial goods have been allowed to enter Gaza Strip for the second consecutive month. The types of newly allowed industrial goods are very limited in terms of types and quantities where most of these goods are construction materials including aggregates, and cement which are considered insufficient to prompt the halted construction activities. For instance this month, only 2 truckloads of metal were imported versus 757 truckloads of aggregates and 144 of cement. Other types of goods such as auto parts and utensils were formally allowed to enter Gaza Strip, but yet none of these goods have entered for unknown reasons.

The table below shows the newly allowed goods and their quantities:

New Types	Truckloads	Volume (ton)
Wood	36	3250
Car tires	9	2888 tire
Cement	36	1504
Mixed cement	109	3294
Aggregates (Gravels)	757	28000
Construction metal	2	80
Clothes and shoes	150	3671
Juices	109	2557

* Import term is used for shipments that cross into the Gaza Strip through any of the official trade terminals regardless of their origin.

E. TERMINALS PERFORMANCE TRENDS

E.1- AIMontar/Karni Terminal

Statistical trend for the months from May 2007 to August 2008 shows that *May 2007* was considered as the best month regarding **export** levels, started to decline in June 2007 and totally halted in July onwards. The **import** levels were fluctuating, steeply declined in June 2007, drastically declined from July 2007 to June 2008, and finally decreased during August by about 45% in comparison with July 2008. In terms of **operation days**, the trend sharply dropped from June 2007 to June 2008, increased in July 2008 after the truce took effect, and dropped in August 2008.

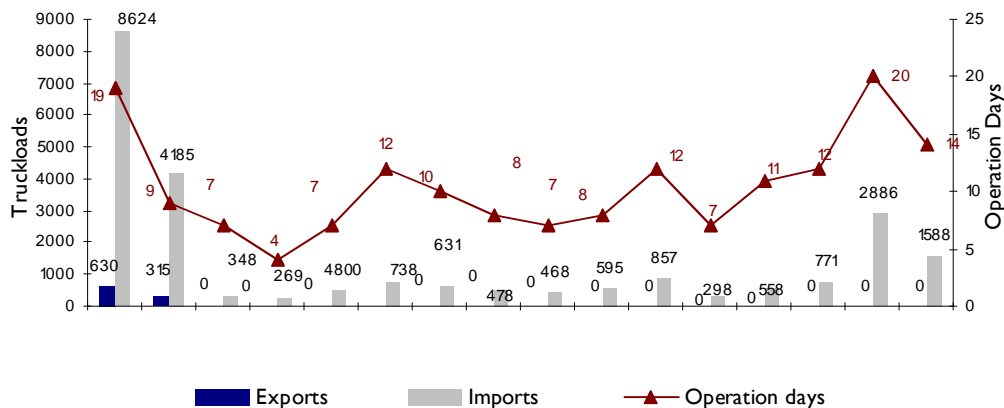


Figure (2): Trade activity and operation days at AIMontar/Karni terminal (May 2007 - August 2008)

E.2- Sufa Terminal

Between June 2007 and August 2008, the **import** levels were fluctuating, drastically decreased from September 2007 to January 2008, slightly improved from February to June 2008, and noticeably increased in the last two months after the truce . With regard to **operation days**, the trend was slightly fluctuating from June 2007 to January 2008, and improved in February 2008

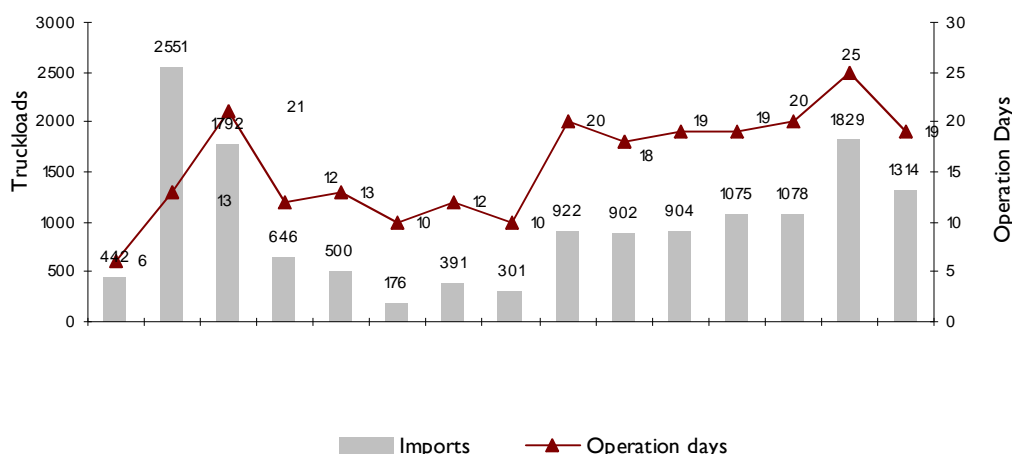
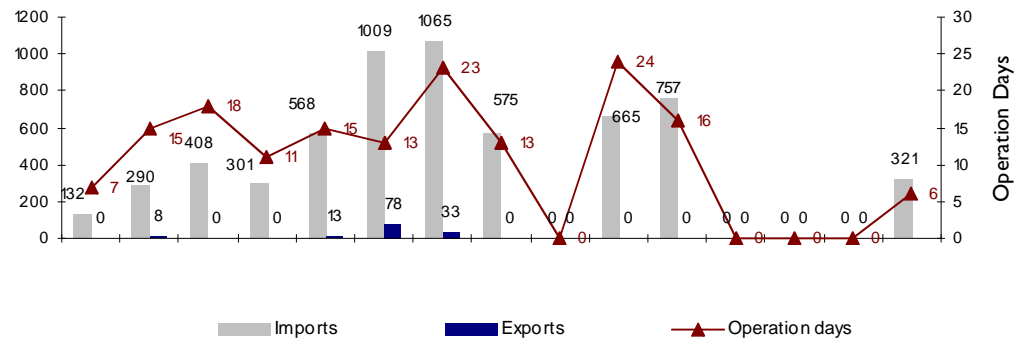


Figure (3) : Trade activity and operation days at Sufa terminal (June 2007– August 2008)

E.3-Karem Abu Salem/ Kerem Shalom Crossing

During the study period from June 2007 to August 2008, the **imports** trend was increasing until December 2007, drastically dropped in January 2008, totally halted in February 2008, and improved in March and April 2008, and totally halted from May to July and then the crossing resumed operations during August. With regard to **exports**, 8 truckloads of potatoes were exported in August 2007, 13 truckloads of cash crops (strawberries and flowers) were exported in November, 78 truckloads were exported in December 2007, and 33 truckloads were exported Since January 17, 2008, no export activities were reported . With regard to **operation days**, the trend was fluctuating, improved in December 2007, dropped in January, halted in February, increased in March , and halted again in May until it resumed operations in August.



Figure(4): Trade activity and operation days trend at Karem Abu Salem/Kerem Shalom (June 2007 - August 2008).

E.4– Trend of Imports Through All Terminals

The trend of imports drastically dropped by about 50% of its monthly average in June 2007, and continued steadily decreasing from July onwards, where the trend stabilized around an average of 20% of the monthly imports average of the previous two years (June2005– May2007), then the trend increased in July to reach 50% (22.5% if the aggregates excluded), and dropped to 34% in August due to the frequent terminals' closure.

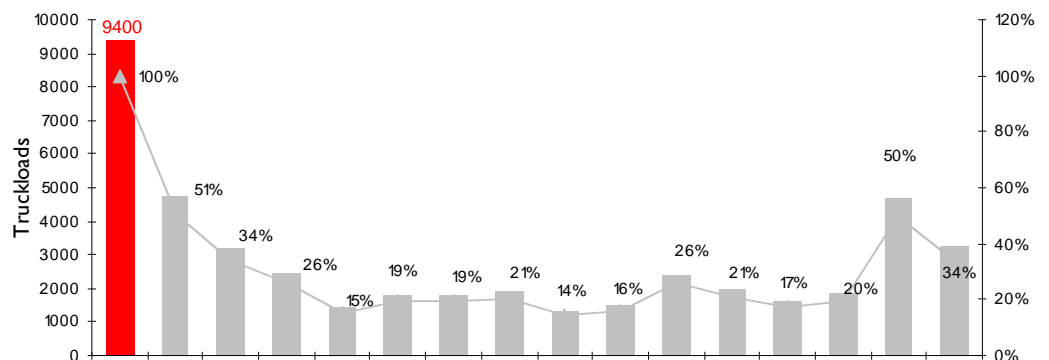


Figure (5): Imported truckloads through all terminals in the period from June 2007– August2008 .

F- Nahal Oz Entry Point Performance

F.1– Terminal Operation (Days & Hours)

Nahal Oz	Operating Days	Imported Truckloads	Notes
Industrial gasoline only	18	293	Working hours From 8:00 am to 4:00 pm
Diesel	18	150	
Benzene	12	17	
White gasoline	0	0	
Cooking gas	18	175	

F.2– Imports

A total of 18,341,230 liter of fuel, and 4,165,080 Kg of gas were imported to Gaza Strip through Nahal Oz entry point; about 63% of the imported fuel was industrial gasoline needed for the power generation station, 33% diesel, and 4% benzene (petrol).

F.3– Terminal Trends

During June 2007 - August 2008, the import levels of the **fuel** were fluctuating around its average until October 2007 and then it decreased below the average from November onwards. The fuel imports dropped by about 25% of its average in November 2007, 14% in December, 20% in January 2008, 38% in February, 25% in March, 57% in April, 37% in May, 22% in June, 10% in July, and the fuel imports were around the normal average (approximately 18 million liters) in August due to the increase in the industrial gasoline.

The import levels of the **gas** dropped in December 2007 to its lowest level causing a shortage in the gas supply in Gaza Strip but the gas supply increased in the first three months of this year to reach its average level while drastically dropped by about 51% in April of its normal average, 34% in May, 33% in June, 9% in July and 8% in August.

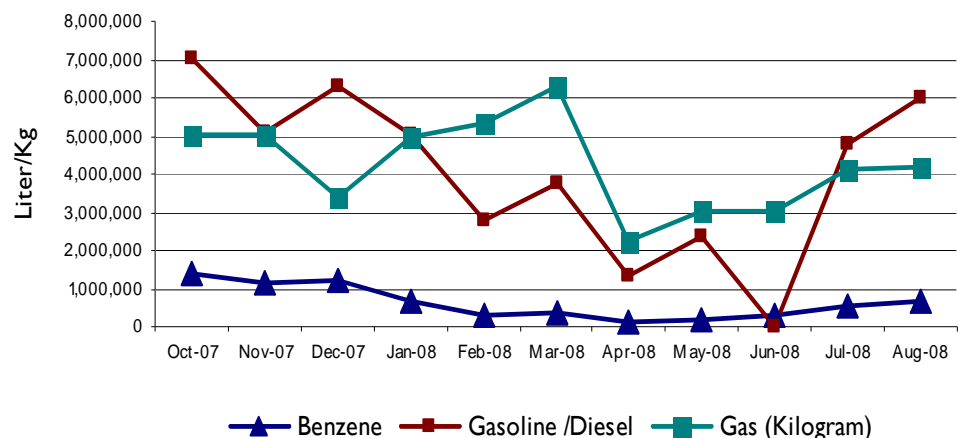


Figure (6): Benzene, gasoline/diesel, and cooking gas supplies in the period from June 2007– August 2008.

Fuel & Gas Imports

Despite a slight improvement in the last two months following the announcement of the truce, the fuel and gas supplies are still way below the minimum needs. The current needs of fuel are estimated to be over the normal monthly averages due to the accumulation of monthly deficit for more than 9 months. The imports of benzene, gasoline, and cooking gas are below current needs by 62%, 40%, and 48% respectively .

Type	Monthly Current Needs	Jul-08	Aug-08	Improvement in August	Current Deficit Rate
Benzene	1700000	540620	652490	17%	62%
Diesel	10000000	4787460	6007530	20%	40%
Cooking Gas	8000000	4118444	4165080	2%	48%

The reduction of fuel supplies has started at the end of October 2007, as part of the sanctions imposed on Gaza Strip by the Government of Israel, and has been accelerating since January 2008 until present. The insufficient fuel and gas supply has caused major problems and negative effects on many aspects of the life in Gaza Strip. To illustrate, the sewage treatment pumps inefficiently operate under frequent electricity cuts and fuel shortage which has led to serious pollution and health crisis. In addition, the lack of fuel has impeded the movement of people and goods, where very limited amount of fuel is distributed by the Registration and Transportation Department to the registered private and commercial vehicles through fuel coupons, compelling taxi drivers to use cooking oil instead . Furthermore, too many private cars have switched from benzene to gas, since the benzene reduction has started 2 months before the reduction of cooking gas supplies, which intensified the cooking gas shortage.

SECTION 2: SECTORS PERFORMANCE

A– Closure Impact On Key Sectors

According to the related Industrial Associations, and despite the entry of limited quantities of garments and wood, most of import and all export operations were halted for industrial products since the mid of June 2007 and this in turn resulted in a suspension of 95% of industrial sector operations, and laying off about 33,000 workers. The chart below illustrates the impact of the closure on the **industrial sector**:



Figure (7): The impact of the closure on the industrial sector .

B– Terminals Closure Impact on Furniture Sector:

According to the Wood Industries Union (WIU), and as a result of the closure, the furniture sector suffered considerable losses of about \$30 million as direct export sales losses, and about 90% of establishments were temporarily closed due to the continued absence of raw materials. The remaining establishments (approximately 10%) partially resumed operations despite lacking the complementary materials after allowing the entry of limited quantities of wood in August 2008. Recently three companies have relocated to West Bank.

	June 2005	August 2008
Number of working establishments	600	60
Number of working employees	5500	400
Relocated establishments	0	3
Export sales losses (US million dollar)	NA	30
Export (truckloads)	168	0

C – Terminals Closure Impact on Garment Sector:

According to the Sewing Factories Owners' Unions (SFOU), and as a result of the closure, the garment sector is paralyzed. Recently 5 companies have relocated to West Bank and Jordan, and about 50 companies have partially resumed operations for the local market after allowing the entry of some materials such as fabrics and some cloths accessories . The sector losses are estimated at US\$26 million as direct export sales losses.

Indicator	June-2005	August 2008
Number of working establishments	960	50
Number of working employees	16000	500
Relocated establishments	0	5
Export sales losses(US million dollar)	NA	26
Export (truckloads)	172	0

D – Terminals Closure Impact on Cash Crops Sector:

The Cash Crops sector was rigorously affected by the closure. Approximately 109 tons of strawberry out of 2500 tons produced (4% of production) last season (2007-2008) were exported through Karem Abu Salem/Kerem Shalom. This in turn, resulted in an estimated loss of about \$7 million. Also, out of 53 million flowers, farmers were able to export 9,300,000 flowers (17.5% of production) resulting in an estimated loss of about \$6.5 million. While nothing of cherry tomatoes was exported this season causing a loss of \$1.5 million. According to the Agricultural Associations, the direct losses are estimated at \$15 million, and about 7500 workers were laid off.

The preparations for the upcoming cash crops season have started already in April despite lacking of seedlings, pesticides, sterilization gas, and other cultivation and raw (packing) materials. Farmers fear that the closure may persist till the end of the season, in which the sector will suffer huge losses for the second consecutive season, hence, the sector will be overburdened to cope with such a situation or pursue growing in the future.

F – Terminals Closure Impact on Construction Sector

As a result of the closure, all the construction and development projects estimated at US\$240 million, including those for UNDP and UNRWA which are valued at more than US\$116 million, were halted due to the absence of construction materials such as cement, metal, and aggregates, in addition to the infrastructure projects. Moreover, the construction-related industries such as tiles, blocks, ready-mix concrete, infrastructure, etc. were also halted, leading to shutting down about 120 establishments, and laying off about 42 thousand employees.

The construction materials quantities that were allowed to enter Gaza Strip this month are deemed trivial when compared to the quantities that were entering Gaza Strip during various periods.

The following table illustrates the variation of the construction materials quantities that entered Gaza Strip from December 2005 to August 2008:

Period	Month	Cement		Aggregates / Gravel		Metal	
		Truckloads	Tons	Truckloads	Tons	Truckloads	Tons
After AMA	Dec-05	1496	256065	6905	241675	88	3344
Before Crisis	May-07	930	35064	4710	164850	73	2834
During Crisis	Jun-07 to Jun-08	0	0	0	0	0	0
Truce	Aug-08	145	4798	757	28000	2	80

SECTION 3: ISSUE OF THE MONTH**Imminent Shutdown Threatens The Only Pharmaceutical Company In Gaza Strip**

The Middle East Pharmaceutical and Cosmetics Laboratories Ltd.(MEGAPHARM) is the only pharmaceutical manufacturer in Gaza Strip. It was established in 1993 in Beit Hanoun/Erez Industrial Zone (north of Gaza) with a working capital of US\$4 million and employs around 30 people. The company is certified for ISO 9001 and in compliance with the American Good Manufacturing Practices (GMP). The company produces 45 types of pharmaceuticals which include solid dosage forms (tablets and capsules), semi solids (ointments and creams), liquids and dry suspensions. Nearly, 60% of the production is marketed in Gaza Strip which covers about 20% of the medical needs. The other 40% is marketed in the West Bank.

Currently, the company works only at 3% capacity as input materials have not been allowed to enter Gaza Strip since the prolonged closure imposed in June 2007. Accordingly, the company is unable to meet its commitment of supplying medicines to third parties. Last year, the company contracted with the World Health Organization (WHO) to supply medicines in the amount of US\$900,000 to the organization. Half of the quantity has been already delivered before the eruption of the crisis, and the rest couldn't be produced due to the absence of raw materials. In addition, another commitment to Palestine Ministry of Health couldn't be fulfilled for the same reason.

According to MEGAPHARM, the accumulated net losses since the closure are estimated at approximately US\$500,000 resulting in sales losses of about US\$2 million. In addition, the company's products are banned from reaching the West Bank for more than two years. As a result, MEGAPHARM become less competitive in the local market. Nevertheless, the company still retains its entire professional staff but, unfortunately, they might be laid off in the near future if the current situation persists. Consequently, the company will be completely shut down.

So the ultimate question is: why imports of pharmaceuticals are allowed, either as aids or commercial, while the imports of pharmaceutical raw materials are banned????!!

SECTION 4: TERMINALS UPDATES FOLLOWING THE TRUCE

Following the announcement of the truce "hudna" on June 19, 2008 and took effect on June 22, a slight improvement occurred in terms of terminals operation times, types of goods, and truckloads volume that allowed to enter Gaza Strip. The following table summarizes a comparison between quantities of vital goods imported after truce with quantities of the same goods that used to be imported during the closure and before the closure :

Indicators	Before closure Jan-Jun12, 2007	Before Truce Jun12,2007 -Jun 22,2008	After Truce Jun 22-Aug31, 2008
Total monthly average imports through all terminals (truckloads)	9,400	1,930	3,970
Total monthly average exports	1,440	0*	0
Total Monthly average aggregates imports (truckloads)	4,500	0	1,450
Total Monthly average cement imports (truckloads)	1,000	0	133
Total Monthly average metal imports (truckloads)	80	0	2
Total Monthly average cooking gas supply (Kg)	5,000,000	4,525,000	4,420,000
Total Monthly average diesel supply	8,500,000	4,138,000	5,400,000
Total Monthly average benzene supply (liter)	1,500,000	1,463,000	600,000

* During the closure, only 124 truckloads of cash crops were allowed to cross out from the Gaza Strip, as a result of winning a court case at the Israeli courts, called by the Palestinian agricultural cooperatives to allow the exports of the crops.

ANNEX I**Gaza Terminals Overview**

There are six trade terminals at the Gaza strip borderlines, these terminals are utilized for the crossing in and out of imported commodities and exported goods. Four of the terminals are controlled by the Israeli government, while Rafah terminal is partially controlled by the Palestinian Authority and under the European supervision. The newly considered Karem Abu Salem /Kerem Shalom crossing is a temporary trade

AlMontar/ Karni Terminal:

AlMontar/ Karni terminal is considered the major commercial terminal of Gaza Strip, where it connects the Gaza Strip with the West Bank, Israel and the rest of the world, the terminal is located at the east of Gaza City and is deemed the lifeline for the inhabitants of the Gaza Strip, but is marred by inefficiency and insecurity. Based on the November 2005 AMA, the number of export trucks per day to be processed through Karni should be 150, and should reach 400 by end-2006; however the average daily exports reached only 70 trucks before June 12th 2007.

Sufa Terminal:

Sufa terminal is located in the south of the Gaza Strip (east of Rafah City) used for the imports of construction materials only and in case of the closure of AlMontar/ Karni terminal, Sufa is used for the imports of some goods.

Karem Abu Salem/Kerem Shalom Crossing:

Karem Abu Salem/Kerem Shalom crossing is located in the south east of Gaza strip, it's 3.6 Km away from Rafah Terminal. Karem Abu Salem/Kerem Shalom is a temporary trade terminal "as classified in the AMA", the terminal is ought to be utilized for the crossing of imports coming from or through Egypt.

Nahal Oz Entry Point:

Nahal Oz Entry Point is located east of Gaza Strip and is considered a transit terminal restricted for the imports of Liquid Fuels and Gas, only from Israel. The point consists of storage petrol tanks and Gas tanks linked directly with pipelines, with the Israeli side.

Beit Hanoun/ Erez Terminal:

Beit Hanoun/ Erez terminal is located in the north of Gaza Strip; it is the border crossing between Gaza Strip and Israel/West Bank. It primarily serves civilians, (diplomats, businessmen, international organizations staff, laborers, medical cases) with permits in and out of Gaza Strip. The terminal is also used for the imports of cars.

Rafah Border Terminal:

Rafah Border terminal is located in the south of Gaza Strip (south of Rafah City); it is the border crossing between Gaza Strip and Egypt. It serves travelers in and out of Gaza Strip, and was also used as a cargo crossing point for imports from Egypt (until 2005), mainly aggregates and food items. Jurisdiction over the border crossing was transferred to the Palestinian Authority in November 2005, after Israel's disengagement from the Gaza Strip.



ANNEX 2

Project Overview

As the National Trade Development Organization, PalTrade is the private sector institution with a direct mandate in trade development. PalTrade is a founder and member of the Private Sector Coordinating Council (PSCC), a consortium of all major private sector institutions, and an important partner of industry and service associations. As such, PalTrade has been a member of the Gaza withdrawal technical committees and negotiations team; especially providing the private sector perspectives of the Access and Movement Agreement (AMA) for the cargo movement at the terminals. PalTrade is also a private sector representative in the Terminals' Steering Committee which was formed by the president to act as the coordination body for the reform and development of the border crossings.

As part of the World Bank project "Facilitating Trade Flows between WBGS and Israel" and the previous "Private Sector Participation in Gaza Withdrawal Coordination Process" project, PalTrade has maintained a physical presence at AlMontar/ Karni since August 24th, 2005. As such, PalTrade is the only independent source of trade terminals information which is used by the Quartet, the World Bank, the US Security Coordinator, UN OCHA and others to report on terminal operations. The scope of operations including the monitoring, collection and analysis of statistics for Gaza trade terminals operations.

Financing for the border monitoring activities in the first year was through a World Bank grant to the PA in association with emergency support during the Gazan disengagement. In the second year, financing was through a Post Conflict Fund grant which was closed in September 2007.

Financing for the **"Cargo Movement and Access Monitoring and Reporting" Project** from October 2007—October 2008, is provided by the Norwegian Consultant Trust Fund under the supervision of the World Bank (MNSED Finance and Private Sector Unit).



ANNEX 3**Imports Movement Through AIMontar/Karni, Sufa, and Karem Abu Salem/ Kerem Shalom in August 2008.**

Day	Date	AIMontar/Karni	Sufa	Karem Abu Salem/ Kerem Shalom
Friday	01/08/2008	0	0	0
Sunday	03/08/2008	0	88	0
Monday	04/08/2008	223	86	0
Tuesday	05/08/2008	0	82	0
Wednesday	06/08/2008	105	88	0
Thursday	07/08/2008	97	71	0
Friday	08/08/2008	0	46	0
Sunday	10/08/2008	61	47	0
Monday	11/08/2008	265	79	0
Tuesday	12/08/2008	0	0	0
Wednesday	13/08/2008	93	84	0
Thursday	14/08/2008	83	86	0
Friday	15/08/2008	0	37	0
Sunday	17/08/2008	22	88	0
Monday	18/08/2008	237	69	25
Tuesday	19/08/2008	16	61	47
Wednesday	20/08/2008	0	0	0
Thursday	21/08/2008	61	32	41
Friday	22/08/2008	0	38	50
Sunday	24/08/2008	100	0	73
Monday	25/08/2008	123	0	85
Tuesday	26/08/2008	0	0	0
Wednesday	27/08/2008	0	0	0
Thursday	28/08/2008	102	78	0
Friday	29/08/2008	0	67	0
Sunday	31/08/2008	0	77	0
	Total	1588	1314	321

ANNEX 4

Fuel Imports Through Nahal Oz Entry Point-August 2008

Day	Date	Benzene 95	Benzene 96	Gasoline (Diesel)	Industrial Gasoline	White Gasoline	Gas
		Liter	Liter	Liter	Liter	Liter	Kilograms
Friday	01/08/2008	0	0	0	0	0	0
Sunday	03/08/2008	0	0	0	0	0	0
Monday	04/08/2008	38,000	0	327,010	697,800	0	110,250
Tuesday	05/08/2008	38,020	0	266,000	782,200	0	105,010
Wednesday	06/08/2008	45,010	0	251,480	643,800	0	125,480
Thursday	07/08/2008	0	0	383,460	788,800	0	209,530
Friday	08/08/2008	0	0	0	0	0	0
Sunday	10/08/2008	45,000	0	173,400	541,400	0	229,310
Monday	11/08/2008	38,410	0	304,460	592,400	0	200,150
Tuesday	12/08/2008	0	0	0	0	0	0
Wednesday	13/08/2008	68,010	0	302,070	580,200	0	223,250
Thursday	14/08/2008	20,000	0	377,080	1,033,200	0	282,150
Friday	15/08/2008	0	0	0	0	0	0
Sunday	17/08/2008	45,010	0	260,480	560,800	0	172,390
Monday	18/08/2008	0	0	260,400	780,800	0	286,760
Tuesday	19/08/2008	0	0	246,450	843,830	0	325,020
Wednesday	20/08/2008	0	0	0	0	0	0
Thursday	21/08/2008	38,000	0	167,040	362,000	0	146,200
Friday	22/08/2008	38,000	0	472,560	125,400	0	182,760
Sunday	24/08/2008	0	0	255,400	553,820	0	279,180
Monday	25/08/2008	0	0	298,400	759,820	0	336,980
Tuesday	26/08/2008	0	0	0	0	0	0
Wednesday	27/08/2008	0	0	0	0	0	0
Thursday	28/08/2008	0	0	208,430	1,131,230	0	332,380
Friday	29/08/2008	119,000	0	772,170	289,410	0	242,370
Sunday	31/08/2008	120,030	0	681,240	614,300	0	375,910
Total		652,490	0	6,007,530	11,681,210	0	4,165,080

References & Sources:

- ◆ United Nations Office for the Coordination of Humanitarian Affairs (OCHA)
- ◆ United Nation Special Coordinator Office (UNSCO)
- ◆ The Borders and Passages General Department
- ◆ Agricultural Marketing Cooperatives/Associations
- ◆ Wood Industries Union (WIU)
- ◆ The Sewing Factory Owners Union (SFOU)
- ◆ Informal sources
- ◆ The Palestinian General Petroleum Company (PGPC)
- ◆ Petroleum & Gas Station Owners Association-Gaza