

Maps

Map 1a **Gaza Strip:**
Settlement Evacuation - Groups A, C and D

Map 1b **Northern West Bank**
Settlement Evacuation - Groups B

Map 2 **West Bank:**
Road rehabilitation projects proposed to the international community to assist Palestinian transportation contiguity

Map 3a **North West Bank:**
Road rehabilitation projects proposed to the international community to assist Palestinian transportation contiguity

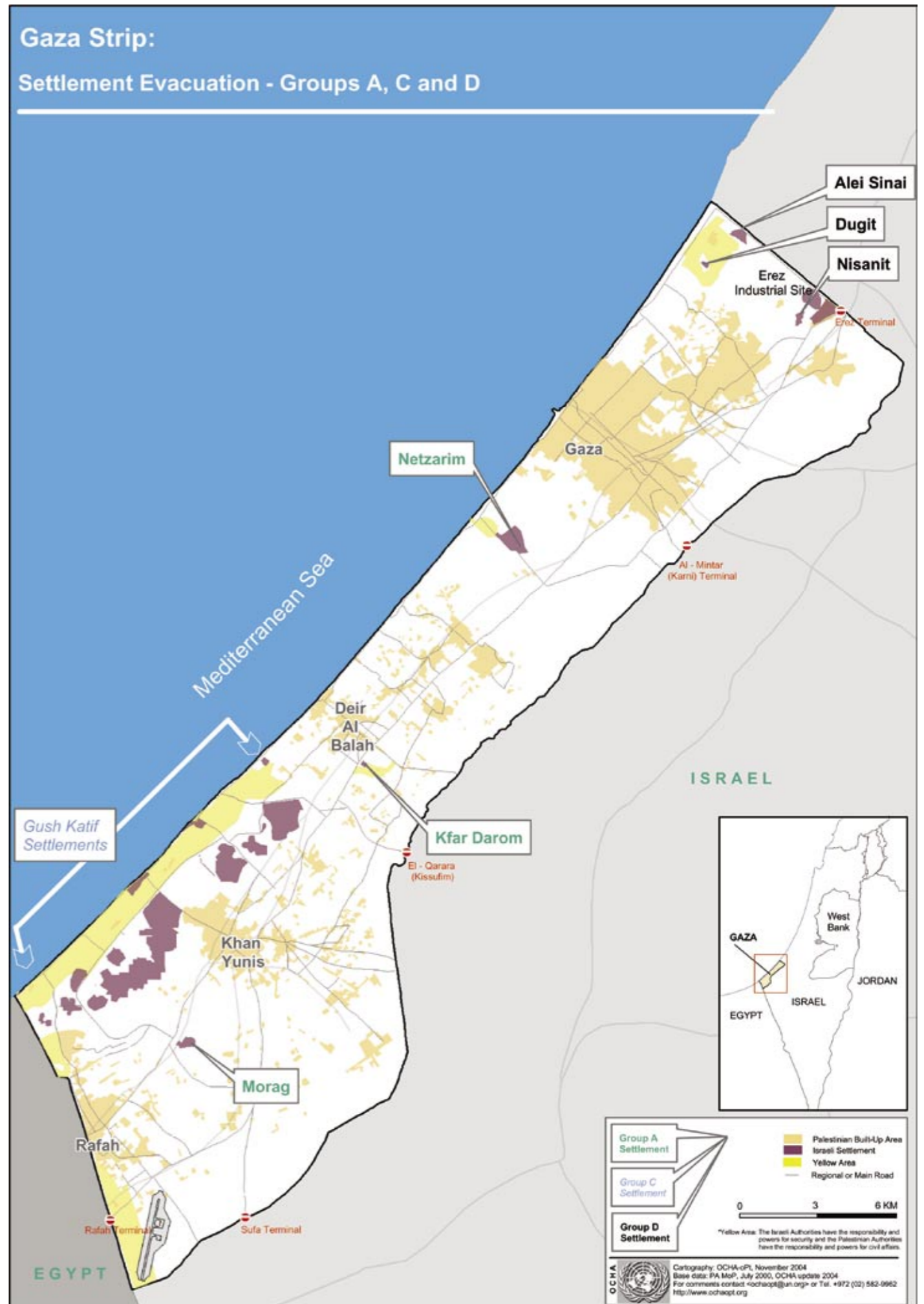
Map 3b **Middle West Bank:**
Road rehabilitation projects proposed to the international community to assist Palestinian transportation contiguity

Map 3c **South West Bank:**
Road rehabilitation projects proposed to the international community to assist Palestinian transportation contiguity

Map 4 **West Bank and Gaza:**
Pre 2000 Checkpoints and Planned Safe Passage

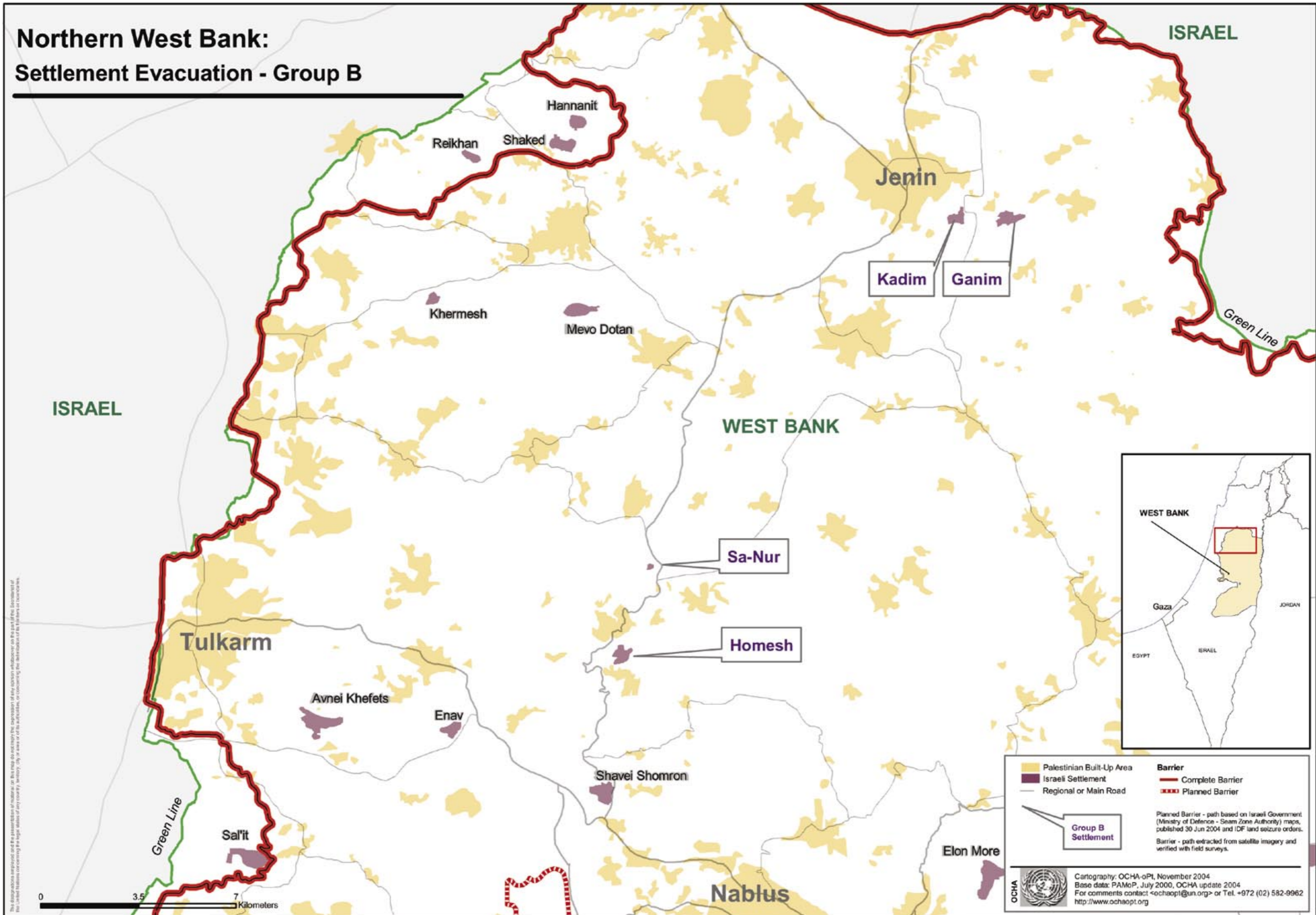
Map 5a **Gaza Closures**

Map 5b **West Bank Closures**



MAP 1a

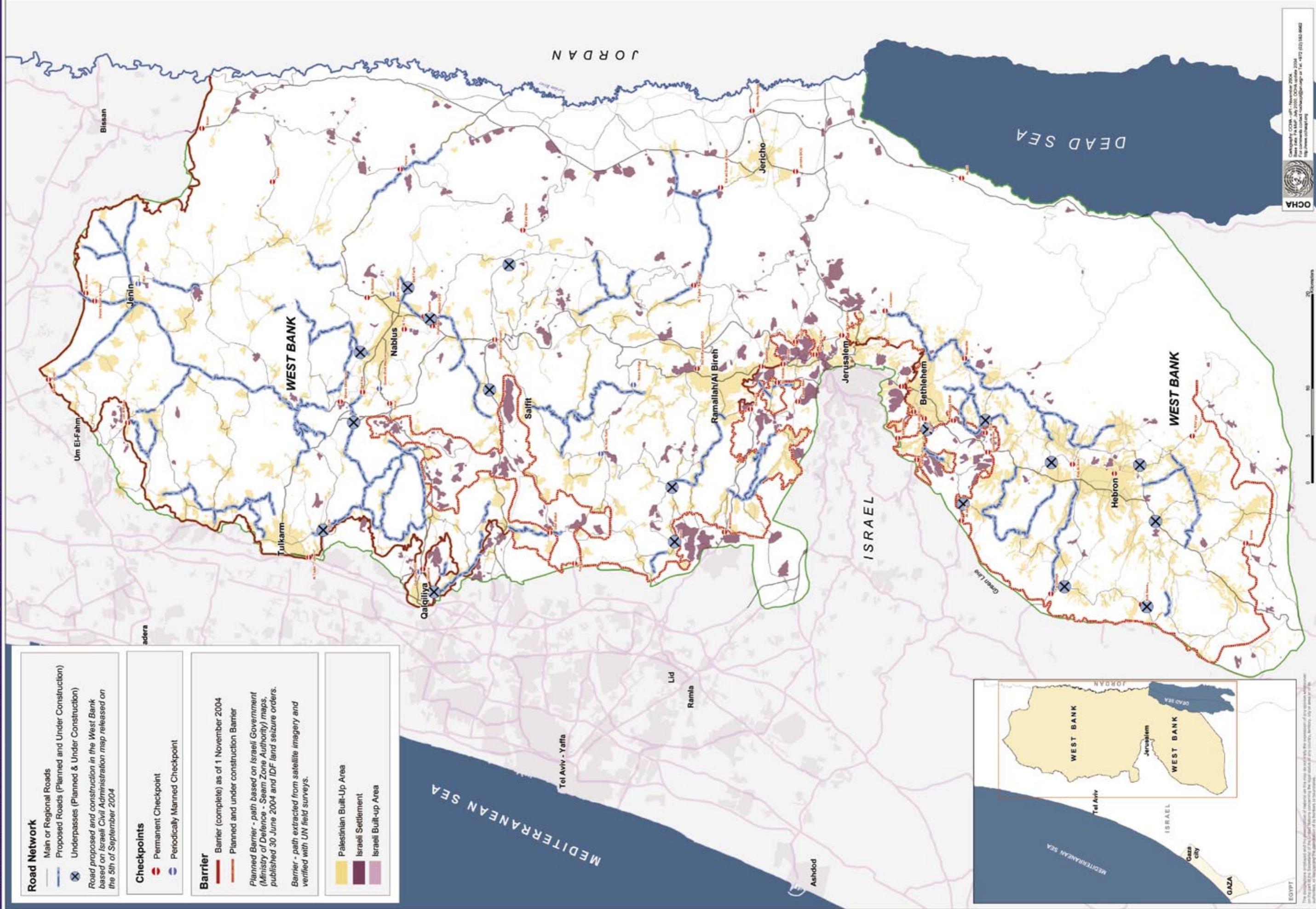
Northern West Bank: Settlement Evacuation - Group B



MAP 1b

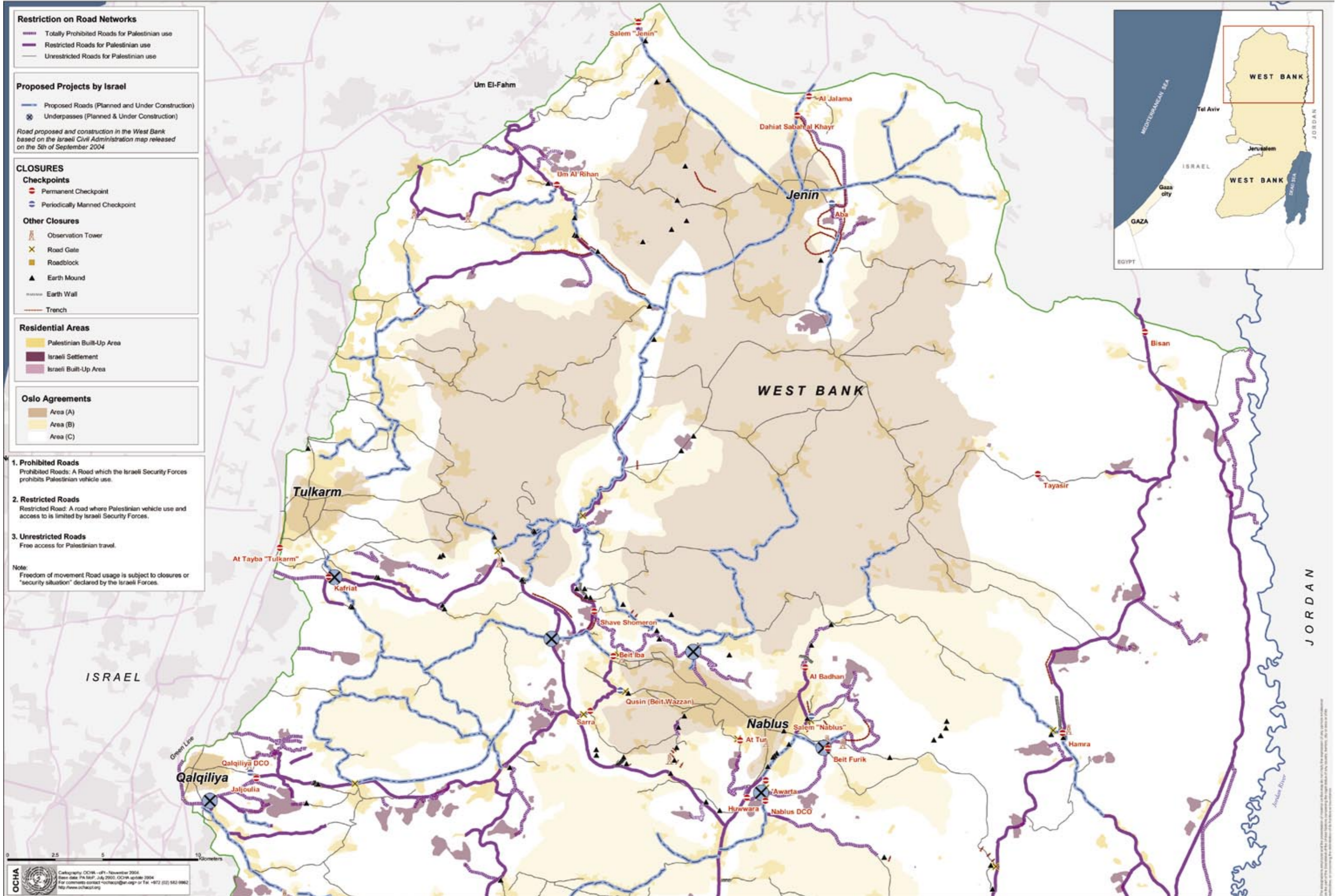
WEST BANK: Road rehabilitation projects proposed to the international community to assist Palestinian transportation contiguity

Prepared at the request of the Humanitarian Emergency Policy Group (HEPG) 28 September 2004



NORTH WEST B A N K: Road rehabilitation projects proposed to the international community to assist Palestinian transportation contiguity

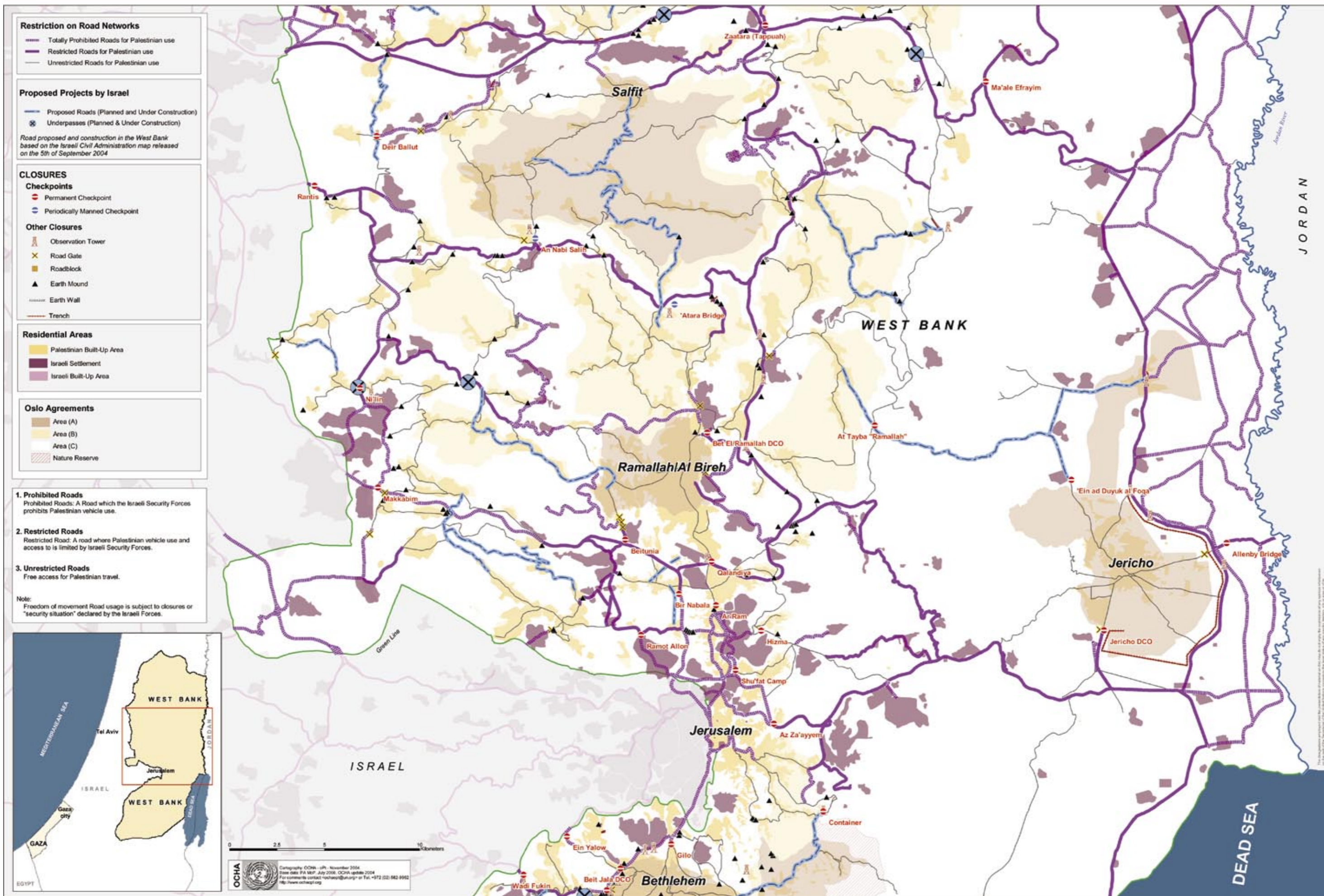
Prepared at the request of the Humanitarian Emergency Policy Group (HEPG) 28 September 2004



MAP 3a

MIDDLE WEST B A N K: Road rehabilitation projects proposed to the international community to assist Palestinian transportation contiguity

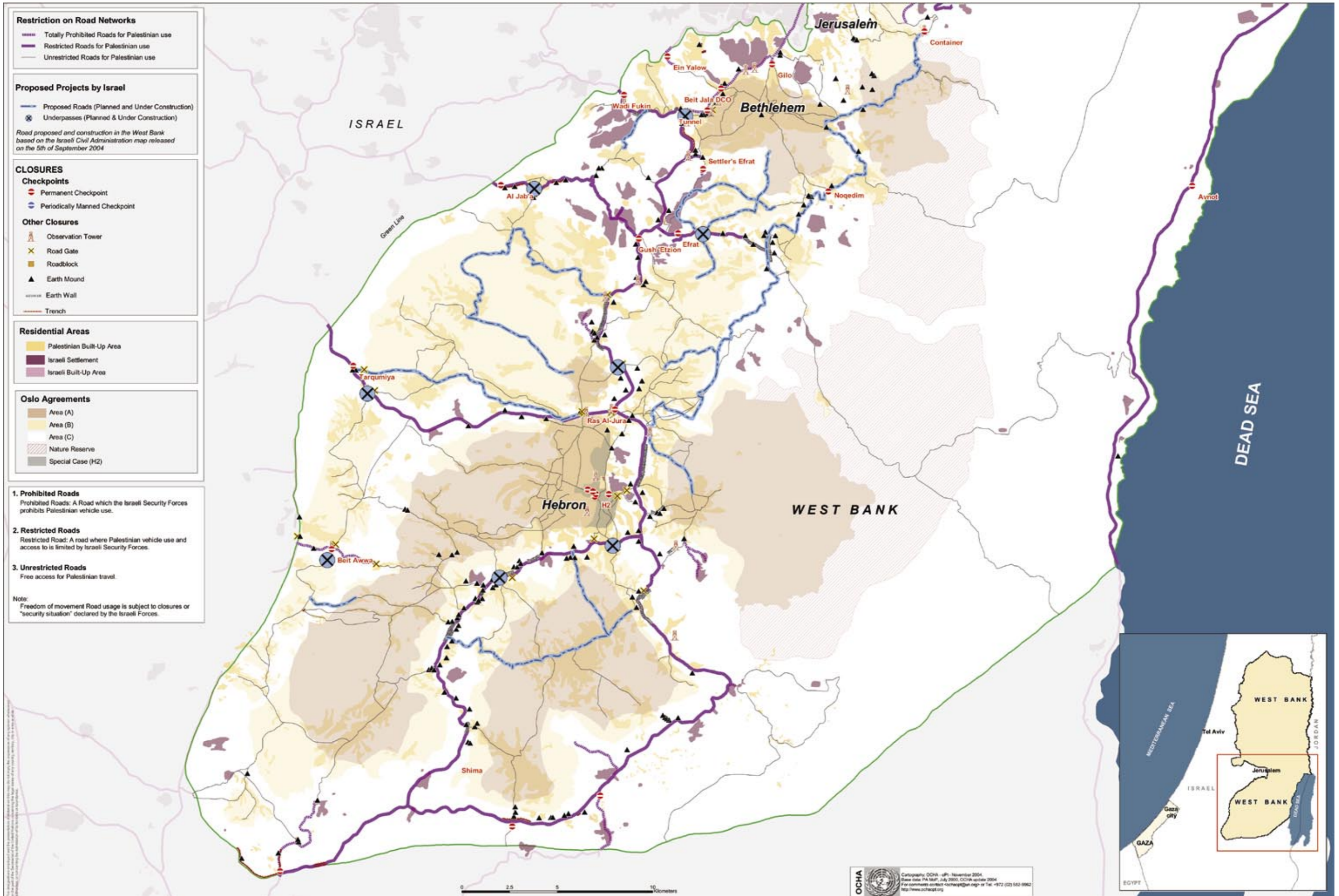
Prepared at the request of the Humanitarian Emergency Policy Group (HEPG) 28 September 2004



MAP 3b

SOUTH WEST B A N K: Road rehabilitation projects proposed to the international community to assist Palestinian transportation contiguity

Prepared at the request of the Humanitarian Emergency Policy Group (HEPG) 28 September 2004



WEST BANK and GAZA

Pre 2000 Checkpoints and Planned Safe Passage

Legend

- Pre 2000 Checkpoint
- Planned Safe Passage
- Palestinian Built-Up Area
- Israeli Settlement
- Israeli Built-Up Area
- Regional or Main Road

Oslo Agreements

- Area (A)
- Area (B)
- Area (C)
- Nature Reserve
- Special Case (H2)
- Yellow Areas - Gaza



The designations employed and the presentation of material on this map do not imply the expression of any opinion whatsoever on the part of the Secretariat of the United Nations concerning the legal status of any country, territory, city or area or of its authorities, or concerning the delimitation of its frontiers or boundaries.

OCHA
 Cartography: OCHA-IPF, November 2004.
 Base data: PA Map, July 2000, OCHA update 2004.
 For comments contact: ochaipf@un.org
 Tel: +972 (0) 583 6042
 http://www.ochaopt.org

MAP 4

GAZA CLOSURES

July 2004

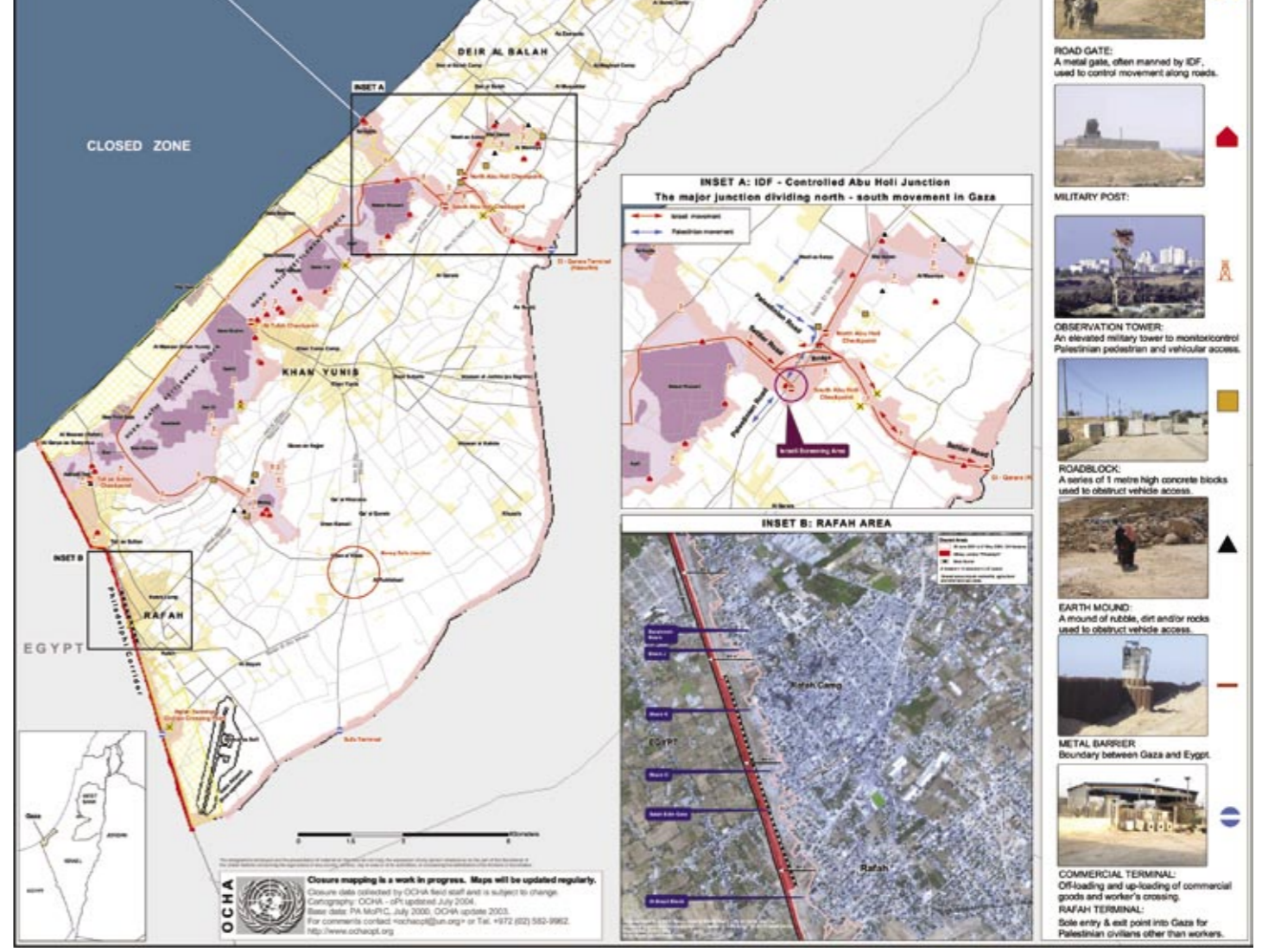
Closure Summary, June 2004

Checkpoint	5
Terminal	5
Road Gate	10
Military Post	45
Observation Tower	87
Roadblock	9
Earth Mound	12
Total	154

Demographic Statistics

Area	Settlement Area	Population	Population Density
Settlement Area	54 km ²	11,700	215 per km ²
Buildup Area	11,700 km ²	7,781	665 per km ²
Settlements	23		
Population Density			655 per km ²

Area	Settlement Area	Population	Population Density
Settlement Area	205 km ²	23,000	112 per km ²
Buildup Area	23,000 km ²	1,451,858	63 per km ²
Settlements	14		
Population Density			25,430 per km ²
Population Density of refugee camps			55,500 per km ²



CHECKPOINT:
A barrier manned by IDF and/or Border Police used to control pedestrian and vehicular access.

ROAD GATE:
A metal gate, often manned by IDF, used to control movement along roads.

MILITARY POST:

OBSERVATION TOWER:
An elevated military tower to monitor/control Palestinian pedestrian and vehicular access.

ROADBLOCK:
A series of 1 metre high concrete blocks used to obstruct vehicle access.

EARTH MOUND:
A mound of rubble, dirt and/or rocks used to obstruct vehicle access.

METAL BARRIER:
Boundary between Gaza and Egypt.

COMMERCIAL TERMINAL:
Off-loading and up-loading of commercial goods and worker's crossing.

RAFAH TERMINAL:
Sole entry & exit point into Gaza for Palestinian civilians other than workers.

MAP 5a

West Bank Closures

Current internal closure system and planned cargo terminals to Israel

CLOSURES

Checkpoints

- Permanent Checkpoint
- Partial Checkpoint

Other Closures

- Observation Tower
- Road Gate
- Roadblock
- Earth Mound
- Earth Wall
- Trench

Barrier

- Barrier (complete) as of 1 November 2004
- Planned Barrier
- Planned Barrier (under construction)

Planned Barrier - path based on Israeli Government (Ministry of Defence - Seam Zone Authority) maps, published 23 Oct 2003, 30 June 2004 and IDF land seizure orders.

Barrier - path extracted from satellite imagery and verified with field surveys as of 1 November 2004.

Barrier Gates

- Currently inaccessible for Palestinians
- Restricted access to Palestinians

Barrier Gates classified as inaccessible if they haven't been open for Palestinian use for the last month or longer.

Restriction on Road Networks

- Totally Prohibited Roads for Palestinian use
- Restricted Roads for Palestinian use
- Unrestricted Roads for Palestinian use

1. Prohibited Roads

Prohibited Roads: A Road which the Israeli Security Forces prohibits Palestinian vehicle use.

2. Restricted Roads

Restricted Road: A road where Palestinian vehicle use and access to is limited by Israeli Security Forces.

3. Unrestricted Roads

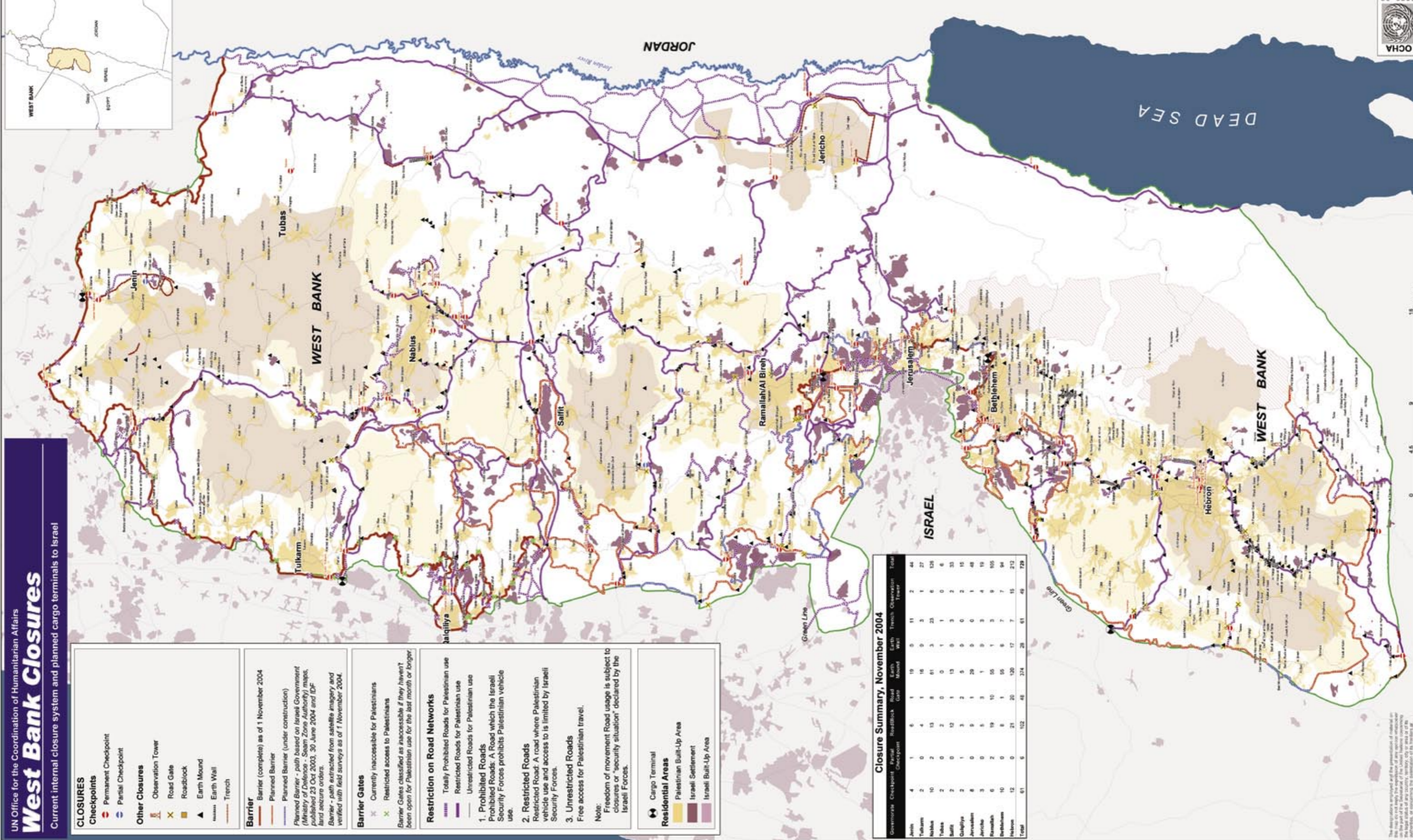
Free access for Palestinian travel.

Note: Freedom of movement Road usage is subject to closures or "security situation" declared by the Israeli Forces.

Cargo Terminal

Residential Areas

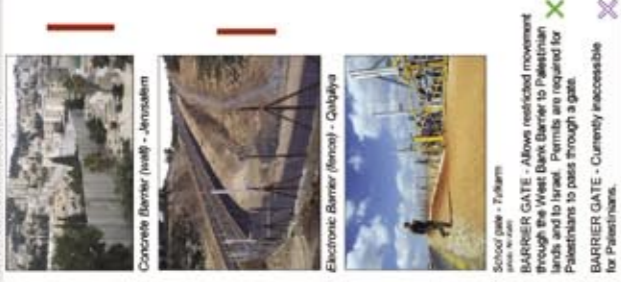
- Palestinian Built-Up Area
- Israeli Settlement
- Israeli Built-Up Area



Closure Summary, November 2004

	Permanent Checkpoint	Partial Checkpoint	Roadblock	Road Gate	Earth Mound	Earth Wall	Trench	Observation Tower	Total
Jerusalem	4	1	6	1	19	0	11	2	44
Tulkarm	2	0	4	1	16	0	3	1	27
Nablus	10	2	13	8	61	3	23	6	128
Tubas	2	0	2	0	0	1	1	0	6
Salfit	2	0	12	1	13	0	3	2	35
Qalqilya	2	1	3	2	5	0	0	2	15
Jerusalem	8	0	9	1	29	0	0	1	48
Jericho	3	0	5	3	1	0	3	4	19
Ramallah	6	2	19	10	95	1	3	9	155
Bethlehem	10	0	8	1	55	6	7	7	94
Hebron	12	0	21	20	120	17	7	15	212
Total	61	6	102	48	374	26	61	49	729

The West Bank Barrier:
A complex series of concrete walls, electronic fences, observation towers, trenches, patrol roads and razor wire, used to control Palestinian pedestrian and vehicular movement.



Barrier Gate: - Allow restricted movement through the West Bank Barrier to Palestinian lands and to Israel. Permits are required for Palestinians to pass through a gate.
Barrier Gate: - Currently inaccessible for Palestinians.

Closure:
A policy of physical barriers and permit requirements used to control Palestinian pedestrian and vehicular movement.

Checkpoint: - A barrier manned by IDF and/or Border Police used to control pedestrian and vehicular access. (Nablus)

Partial Checkpoint: - An established checkpoint operating periodically.

Observation Tower: - An elevated military tower to monitor/control Palestinian pedestrian and vehicular access. (Hebron)

Earth Mound: - A mound of rubble, dirt and/or rocks used to obstruct vehicle access. (Nablus)

Earth Wall: - A continuous wall or series of earth mounds used to restrict access. (Nablus)

Roadblock: - A series of 1 metre high concrete blocks used to obstruct vehicle access. (Ramallah)

Trench: - A ditch used to prevent vehicle crossing. (Nablus)

Road Gate: - A metal gate, often manned by IDF, used to control movement along roads. (Nablus)