

**Cooperation between
KDI School (KDIS) and World Bank Institute (WBI):
Building Capacity for Development in Asia**

September 21, 2005

Ji-Hong Kim

World Bank Institute
KDI School of Public Policy and Management



I. Introduction of KDI

I-1. Organization of KDI

I-2. Research Divisions

II. Introduction of KDI School

II-1. KDIS Mission & Unique Programs

II-2. Center for Knowledge Cooperation

III. Korea and KDIS's Experience on Technical Assistance

III-1. Status of Technical Assistance Activities

III-2. KDIS's Expertise

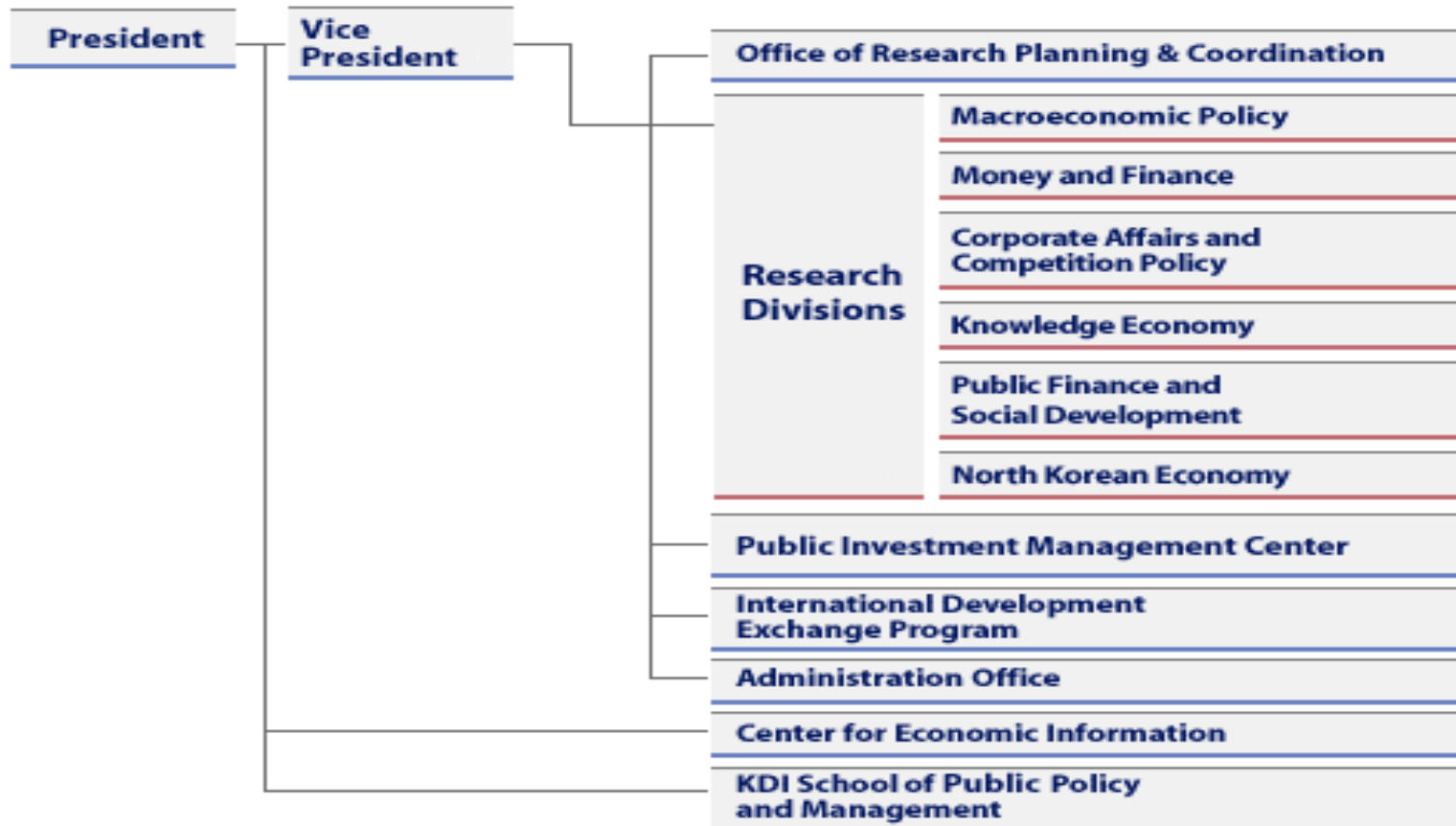
III-3. Extension of Joint Project between WBI and KDIS

III-4. Programs of Asia Training Center



I-1. Introduction of KDI

- Autonomous Policy Oriented Research Organization founded in 1971
- Think Tank for Economic and Social Development



(1) Macroeconomic Policy

- Short-term macroeconomic analysis and forecast
- Domestic and international macroeconomic trend analysis and forecast
- Macroeconomic policy formulation and operational policy alternatives

(2) Money and Finance

- Analysis of domestic and international money market trends and policy measures of current monetary issues
- Broad finance research topics including financial system, financial credit policy, and financial supervision

(3) Corporate Affairs & Competition Policy

- Policy alternatives for modernizing Korean economy and enhancing efficiency of economic system
- Studies on competition policy, restructuring public enterprises, and other business related laws and systems

(4) Knowledge Economy

- Analysis of determinants and trend of national competitiveness
- Studies for expansion of knowledge bases and for nurturing innovation capability towards the 21st century
- Studies for efficient utilization of science, technology, and human resources

(5)Public Finance and Social Development

- **Studies on public financial management and public sector productivity**
- **Studies for improving social welfare systems including pension and health insurance**
- **Studies on labor market and income distribution**

(6)North Korean Economy

- **Studies on the economic situation of North Korea**
- **Policy issues for inter-Korean economic cooperation**
- **Exploration of system transformation process and economic integration**

(7)Public Investment Management Center

- **Founded in January 2000**
- **Responsible for preliminary feasibility studies of public projects**
- **Studies of improving efficiency of public projects financial management.**
- **Methodology for post evaluation of public projects.**

II-1. KDIS's Mission & Unique Programs

KDI School was established by KDI in 1997

Missions:

1. Educating the future **leaders in government, business, and civic organizations** that can effectively meet the challenges of the globalizing world
2. Conducting academic research and disseminating the results in order to contribute to the prosperous and peaceful world
3. Providing professional services to public sector and private organizations to facilitate democratic processes and market mechanisms.

Educational Programs

Master of Public Policy(MPP) / Master of Business Administration(MBA)

Master of Foreign Direct Investment / Executive Education Program

Ph. D. in Public Policy / Ph. D. in Management

II-2. Center for Knowledge Cooperation

International Development Exchange Program

- **Knowledge Sharing since 1982**(3,800 policy makers from 148 countries)
- **International Development Forum (IDF)** on National Vision and Strategy Program on Korean Economic Development
- **Regional Cooperation Program (RCP)** on Forum on Public Sector Reform Workshop on International Trade and WTO Agreements
- **Development Consulting Services (DCS)**; Knowledge Sharing Project
- **Korea Knowledge partnership Program (KKPP)** in collaboration with WB
- **Global Development Learning Network (GDLN)** Project
- **Inter-Korean Knowledge Cooperation**

National Knowledge Cooperation

- Special Program on Economic Policy Making, Brownbag Meetings, MBPA
- KDI School-KorAm Bank Finance MBA Program
- Real Estate Finance for Korea Land Corporation
- KDI-Maekyung Public Policy Forum
- Korea's Economic Development & Economic Crisis Management
- Pre-MBA Course
- E-learning programs

Center for Conflict Resolution and Negotiation

- Educational Programs for the Public and Private Sectors
- Consulting services
- Leading-edge Research
- International Workshops on Conflict Resolution and Negotiation

(1) Macro Finance Economy Policy

Major policy issues

- Role of Government
- Foreign Aid, Improvement of Organization
- Macro economy policies & Export Promotion Policy
- Finance & Taxation for price stabilization
- Fiscal Policy
- Management of International Balance of Payments
- Economic Crisis and Management

Recent Activities (Policy Consultation and Seminar)

1. **Enhancing Tax Administration and Tax Policy (Mongolia, 2001. 8~9, 2003. 7, 2003. 9)**
2. **Public Finance and Tax/Customs Reform (Laos, 2003. 7~8, 2003. 12)**
3. **Enhancing Economic Policy Planning and Management (Mongolia, 2003. 12)**
4. **Myanmar's Economic Management for Sustainable Development (Myanmar, 2003.11, Seminar)**
5. **Joint Seminar on Korea's Economic Development and Crisis Management (Argentina 2003. 9, Egypt 2003. 1, Seminar)**
6. **Policy Advice on Economic Development of Cambodia (Cambodia, 2003. 7~8, 2003)**

(2) Industrial Policy

Major policy issues

- Export-lead development policy of manufacturing industry
- Heavy Chemical Industry Development policy
- Industry Restructuring Policy

Recent Activities (Policy Consultation and Seminar)

1. **Knowledge Sharing Project/Policy Consultation (Vietnam, Uzbekistan, 2004. 8~2005. 12)**
2. **Vietnam : Major Policy Agenda and Policy Responses toward a Global Market Economy**
3. **Uzbekistan : Strategy of Developing the Manufacturing Sector and Export Promotion**
4. **Joint Seminar on Korea's Development Policy of SME and Its Lessons (Cambodia, 2002.12, Seminar)**
5. **White Paper on Managing Industrial Restructuring (Indonesia, 2003. 8~11, Policy Consultation)**
6. **Capacity Building of SSC (Vietnam, 2003. 6.~7, 2003.10)**
7. **Preparing Vietnam's Entry to WTO (Vietnam, 2003. 11, Roving Seminar)**
8. **Asset Management Corporation Project for Thailand (Thailand, 2001.2, Policy Consultation)**

(3) Social Development Policy

Major policy issues

- Technology education Development policy
- Expansion of Social Overhead Capital
- Regional Development
- Saemaeul Movement

Recent Activities (Policy Consultation and Seminar)

1. **Strategies for Improvement of Agricultural Marketing Systems and Promotion of Agricultural Exports (Myanmar, 2002.1.~ 4)**
2. **Seminar on Exchanging Experience of Financial and Monetary Policy (Laos, 2002. 4)**
3. **Seminar on Strengthening the Research Capacity of Development Strategy Institute of Vietnam (2002.5.27-31)**
4. **The New Community Program: A Response to Poverty Reduction in Indonesia (2002. 6, 2002. 10~11, Policy Consultation)**
5. **The Case of Cikarang and Bitung in Indonesia (2002. 7, 2002. 9)**
6. **Competition Policy Seminar for Philippine(2002. 6, Seminar)**
7. **Policy for Regional Management and Regional Planning in Vietnam (2003. 8, 2003. 11, Policy Consultation and Seminar)**

(4) Economic Reform & New Growth Policy

Major policy issues

- Establish national vision & long-term development policy
- Public sector Reform
- Knowledge based Industry policy

Recent Activities (Policy Consultation and Seminar)

1. **KDI/WB Joint Seminar Using Knowledge and Information for Mongolia Development (Mongolia, 2001.8, Seminar)**
2. **Seminar and Consulting on E-learning System (Vietnam, 2002. 12~2003. 2)**
3. **Technical Assistance on Strengthening Export Competitiveness: Joint Seminar on the Role of Knowledge and Innovation in Improving Competitiveness(El Salvador 2003.11)**
4. **International Conference on Public Investment Evaluation (Vietnam, Mongolian, Sri Lanka, Laos, Thailand, Cambodia, '03.7)**
5. **Study Tour on Innovation Policy and Institutions in Korea (Seoul, '04.12)**
6. **Laos National Organization for the Study of Politics and Administration (NOSPA) Capacity Building (Laos, 2005. 5, 2005. 9, Seminar and Consultation)**
7. **Workshop on reforming technical education in Russia ('05.7, Seminar)**

Issues of International KS

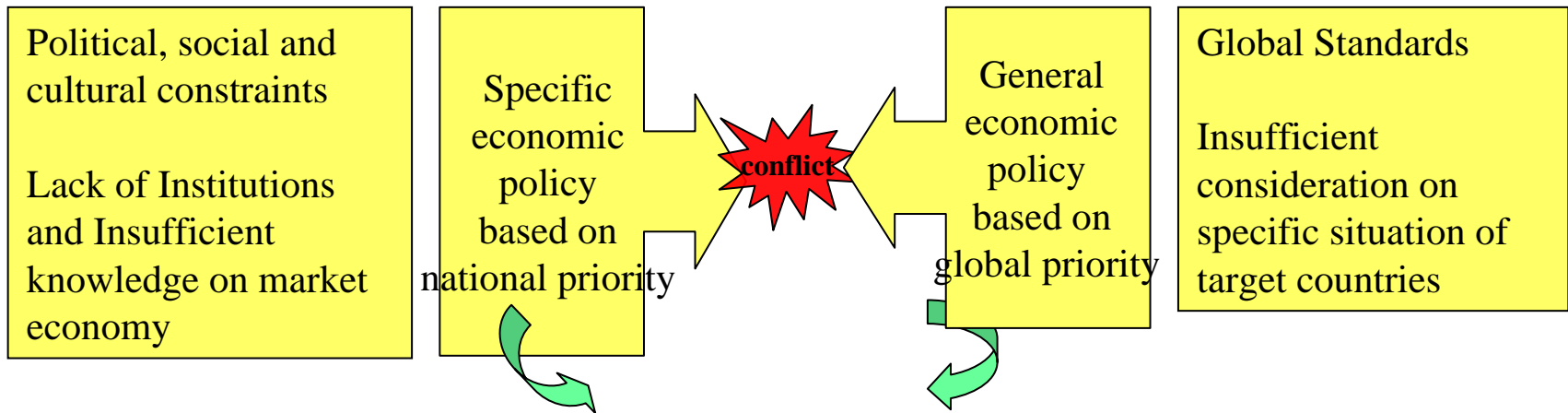
- KS highlights reducing the knowledge gap between advanced country and developing country.
- An absorption capacity of target counties fairly exerts an influence on KS's outcome.
- Many countries in Asia are the Least Developed Countries (LDCs) and transition countries.
- These countries have a different absorption capacity.
- Accordingly, KS needs to be conducted with comprehensive development framework..

Korea's Knowledge and Experiences

1. With the assistance from the World Bank, Korea has achieved remarkable economic success and social development during the last 50 years (from \$100 to \$16,000)
2. Coexistence of diverse industry; IT, Bio, Steel, Shipbuilding, Electronics, garment, service sectors, agriculture, mining, etc.
3. In addition, Korea has established a knowledge-based economy in a short period through innovation and absorption of advanced technology from abroad.
4. Korea made its share of mistakes; bumpy economic management such as major restructuring, Financial Crisis, subsidy on agricultural products, etc
5. Mid-sized economy with 46 mil people without political hegemony (China & Japan)

Developing economies & Transition countries

International KS



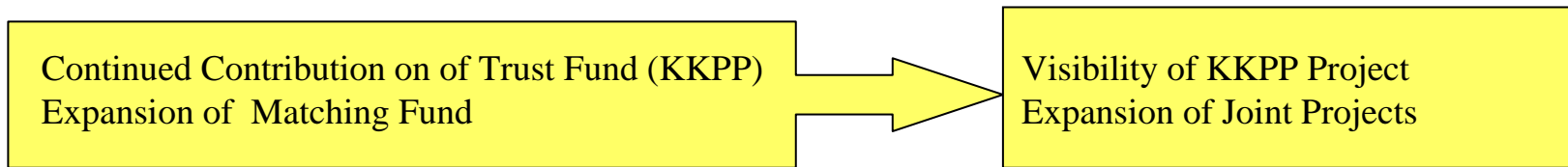
Integrated approach and comprehensive development framework

- Consideration of transition period to market economy
- Deliberation of political, social and cultural constraints and environments
- Comprehension of relationship with neighboring countries and international organization such as WTO, IMF, etc.

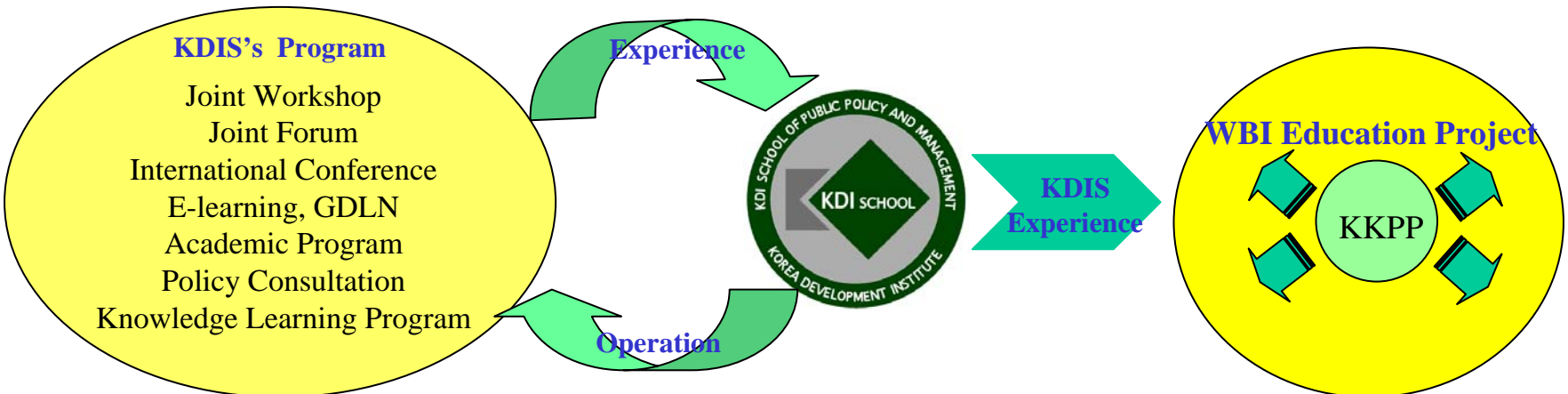
III-2. Cooperation between WBI and KDIS

Operation

- Maximum utilization of the human resource and knowledge of WBI and KDI School
- Basic training of government officials is conducted by WBI local officers
- Intermediate and advanced training is provided by KDI School in Korea



- Capacity-building Projects in Blended Delivery Mode



Target Countries

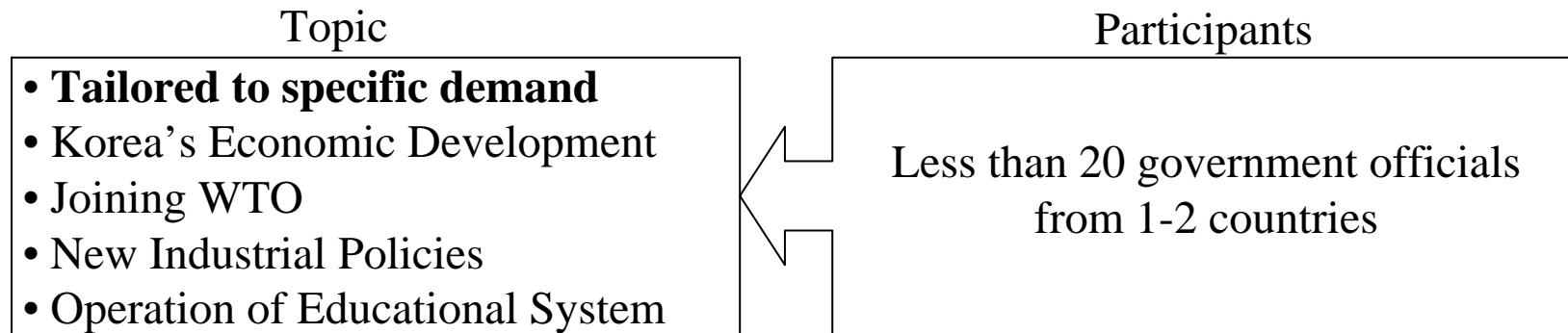
1. World Bank Target Countries in Asia
2. Transition Economies in Asia (Cambodia, Mongolia, Uzbekistan, Laos, Myanmar)
3. WB Target Countries in Non-Asian region ; Country with strong interests in Korea's development experience (Egypt, Brazil, Turkey, CIS countries)

Target Areas

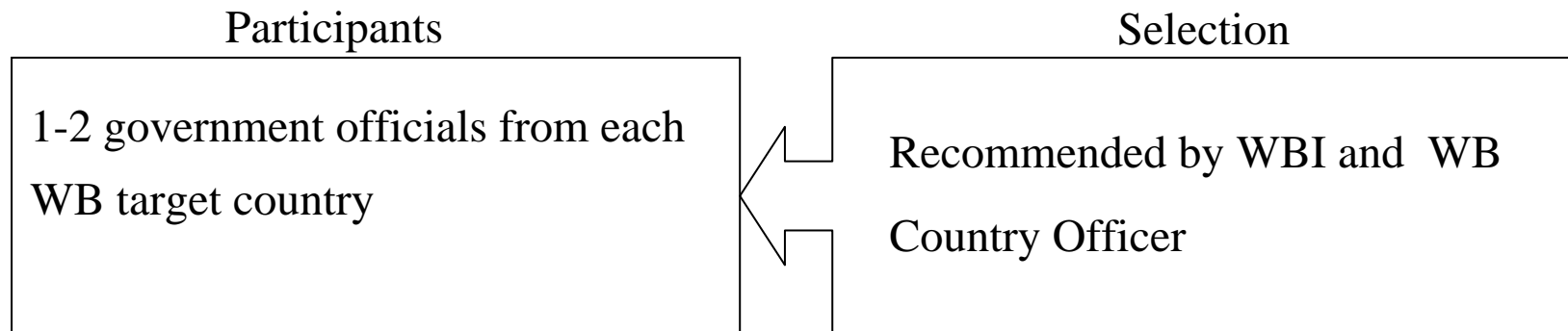
- Industrial Policy
 - Export-lead manufacturing industry policy
 - Heavy & chemical industry policy
 - Industry structure adjustment policy
- Social Development Policy
 - Korea's education policy
 - Regional development
 - Anti Corruption
- Economic Reform and New Growth Strategy
 - Establish national vision and middle · long-term development strategy
 - Public sector reform
 - Knowledge based industry policy
 - Financial sector

I. Expansion of KKPP

1. Workshop & Policy Consultation



2. Linkage with Academic Program of KDIS (Long-term Training)

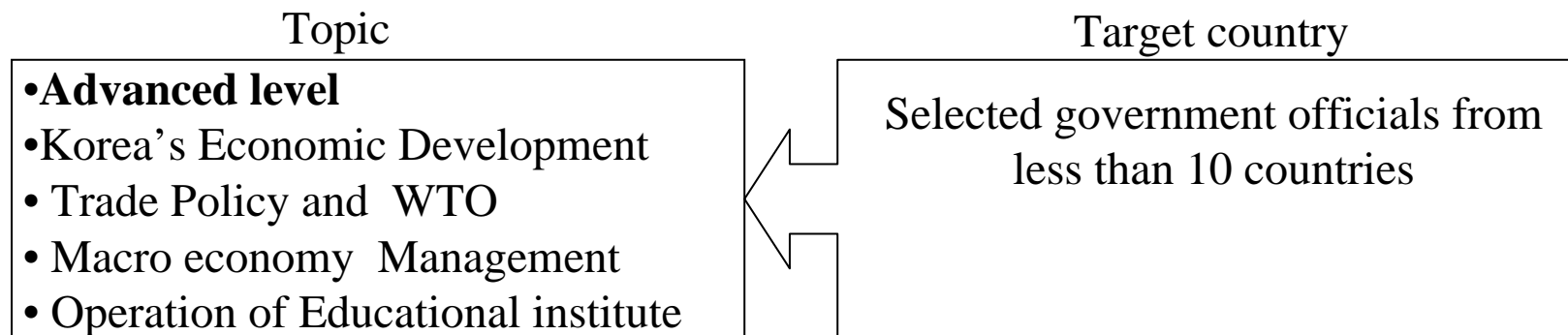


III-3. Action Plan for Cooperation

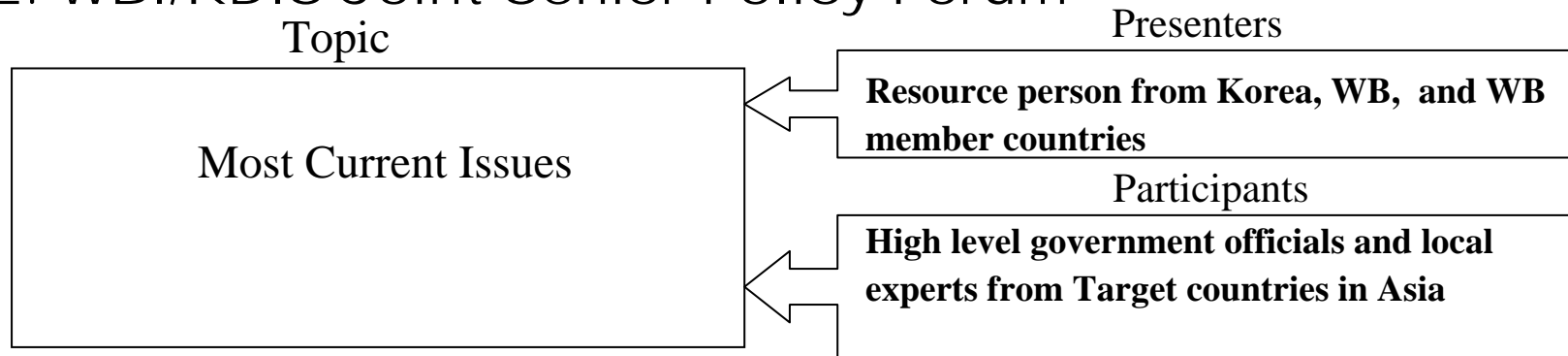


II. Co-sponsored Advanced Training Program in Asia

1. Regular Joint Workshop/Training for Asian region



2. WBI/KDIS Joint Senior Policy Forum





III. Training Center in Asia

KDIS

- Design of Training Program & Topics
- Selection of Lecturer
- Share costs of training program

WBI

- Joint design of Training program
- Recommendation of participants and Resource Persons
- Share costs of Program