

The background of the slide is a photograph of a tropical sunset. The sky is filled with soft, orange and yellow clouds, with the sun low on the horizon. In the foreground, there is a calm body of water reflecting the colors of the sky. On the right side, the silhouettes of palm trees are visible against the bright sky. The overall mood is serene and peaceful.

# Mainstreaming of Climate Change Adaptation into National Development Strategies in Kiribati

By Tiimi Kaiekieki

Ministry of Finance & Economic Development  
Kiribati

Small Island States Forum, 21 October 2007  
WBG & IMF Annual Meetings, Washington, D.C.

# OUTLINE

## 1. COUNTRY BACKGROUND

## 2. CLIMATE CHANGE IMPACTS

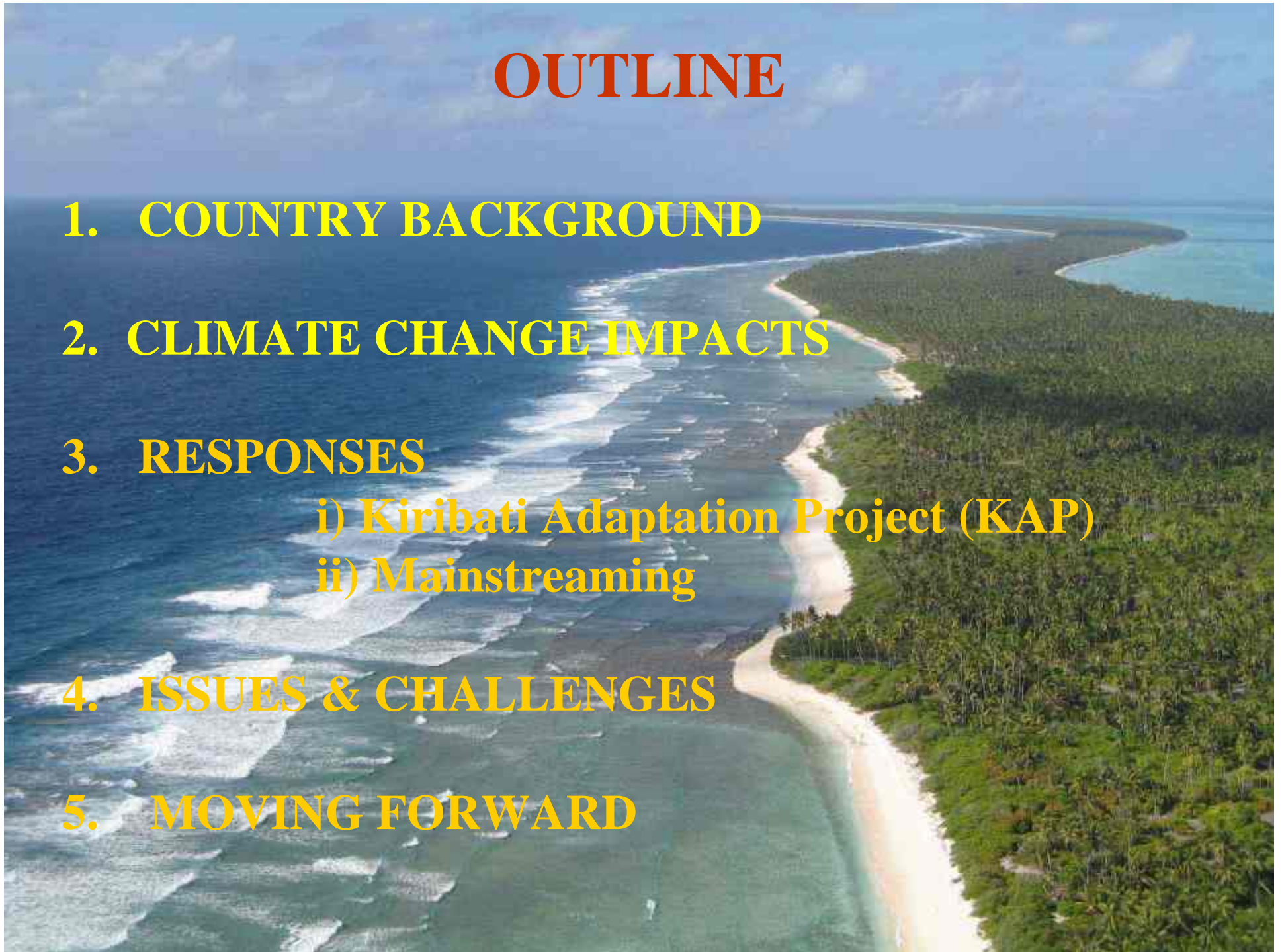
## 3. RESPONSES

i) Kiribati Adaptation Project (KAP)

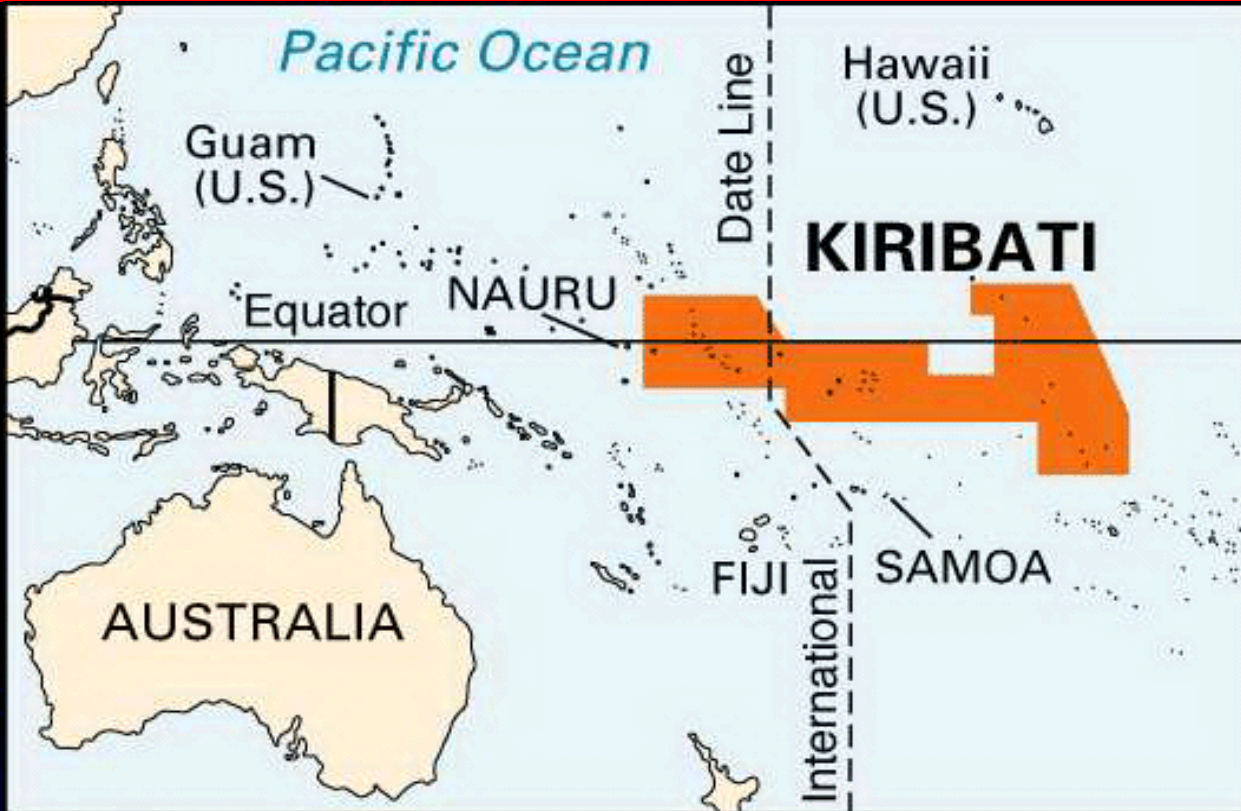
ii) Mainstreaming

## 4. ISSUES & CHALLENGES

## 5. MOVING FORWARD



# 1. COUNTRY BACKGROUND



- Total area: 3.5 million sq. km;
  - of which about 860 sq. km is land
- Comprises 33 low-lying coral atolls (rarely 3 m above sea level)

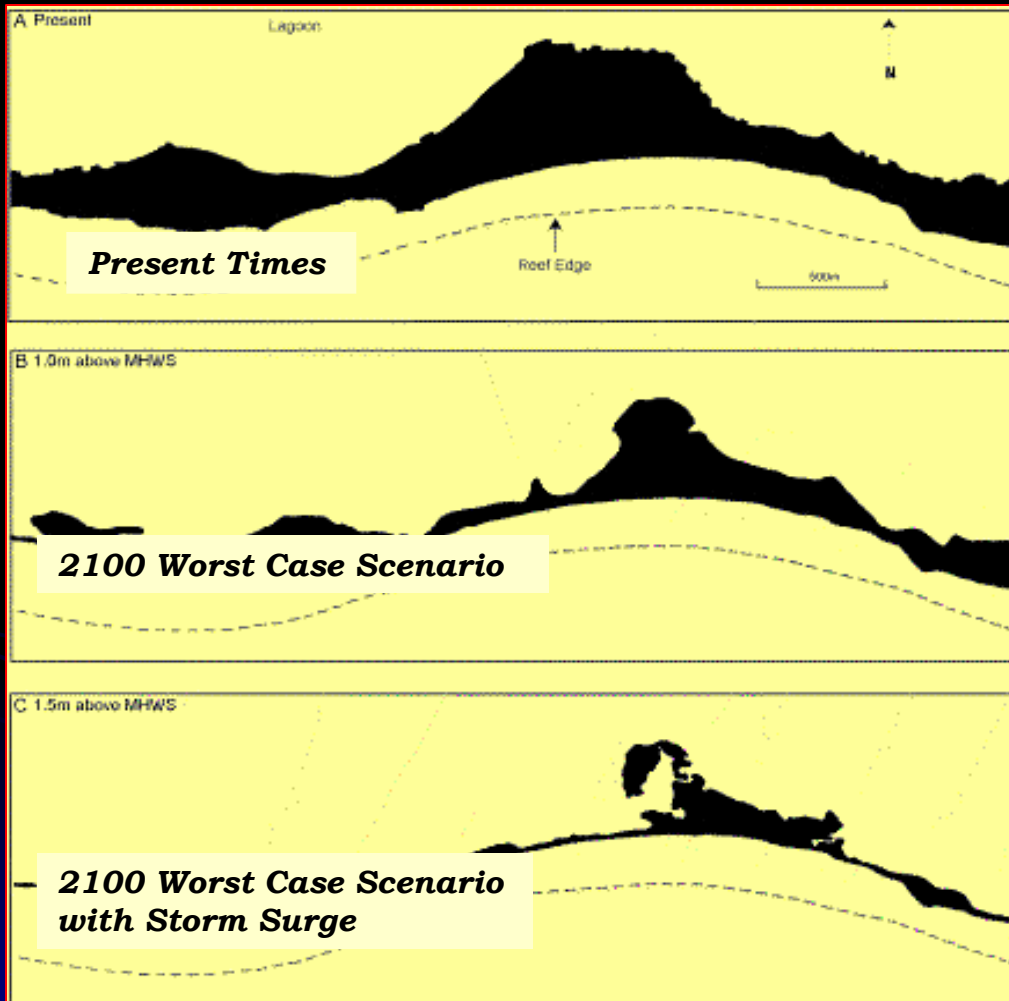


## 1. COUNTRY BACKGROUND cont.



- Total population: 92,533 (2005)
- Majority of population live in the rural outer-islands, heavily dependent on fish, coconut, and taro (bwabwai) for livelihoods;
- High population growth, urban migration, and pollution also contribute to Kiribati's vulnerability;

## 2. CLIMATE CHANGE estimated IMPACTS



A World Bank-funded study (2000) found that in the absence of adaptation, up to 55-80 % of land areas in North Tarawa, and 25-54 % of areas in South Tarawa could be inundated by 2050 due to sea level rise and storm surge



- Inundation of Nth & Sth Tarawa
- Sth Tarawa would be underwater by 2100

## 2. IMPACTS cont.



*Flash Floods*



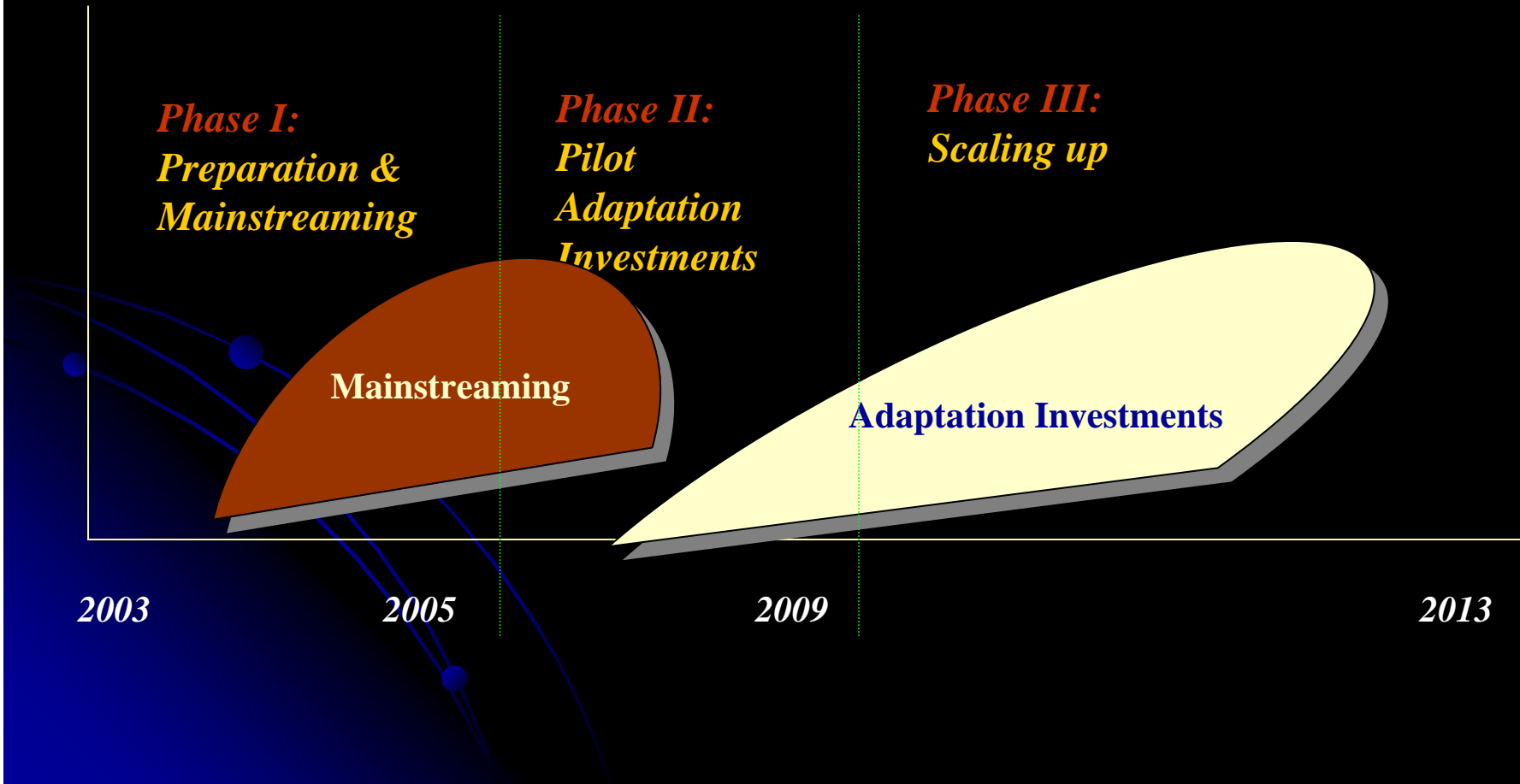
*Saltwater intrusion*



*Storm damage*

# 3. RESPONSES

## Kiribati Adaptation Project (KAP)



## 3(i). Kiribati Adaptation Project (KAP II)

---

### **5 Components:**

1. Policy, planning, and information (AUD1.517m).
2. Land use, physical structures and ecosystems (AUD2.835)
3. Freshwater Resources (AUD2.845m)
4. Capacity at island and community level (AUD0.786m)
5. Project management (AUD0.517m)

### 3(i). Kiribati Adaptation Project II Financing (AUD'000) cont.

Component	GEF	AusAID	NZAID	Sub-Total	Kiribati Govt.	Total	%
1. Policy, planning, information	1067	0	0	1067	450	1517	18
2. Land use, works, ecosystems	523	0	1012	1535	1300	2835	33
3. Freshwater resources	0	1895	0	1895	950	2845	33
4. Island and local capacity	404	0	75	479	307	786	9
5. Program management	300	0	217	517	0	517	6
Unallocated	74	65	11	150	0	150	2
<b>Project total</b>	<b>2368</b>	<b>1960</b>	<b>1315</b>	<b>5643</b>	<b>3007</b>	<b>8650</b>	<b>100</b>
<i>percentage share (rounded)</i>	<i>27</i>	<i>23</i>	<i>15</i>	<i>65</i>	<i>35</i>	<i>100</i>	

### 3(ii). MAINSTREAMING

Consultations  
for Preparation of  
NDS 2004-07

Consultations for  
KAP

**NDS**

- KPA 1:  
Issue 3

#### Coordinating Bodies:

- Office of Beretitenti (OB)
  - NASC (Steering Com)
  - PMU
- MFED

**MOPs**  
(Ministry  
Operational Plans)

#### Implementing Agencies:

- MPWU (Public Works)
- MELAD (Environment)
- MISA (Internal Affairs)
  - Island Council Operational Plan (ICOP)
- MCTTD (Transport & Comm.)
  - Met Office (Weather monitoring)

**BUDGET**

RECURRENT

DEVELOPMENT

## 4. KEY ISSUES & CHALLENGES

---

- i. Inadequate/unsustained commitments needed for timely implementation of the project (especially KAP II) due mainly to:
  - Change in key staff (Administrative and technical staff)
  - Political transition
  - Climate change - a long term issue
  
- ii. With (i) in part, the implementation of KAP II is behind schedule leading to:
  - Extension of project timeframe and cost increment;
  
- iii. Inadequate institutional capacity (esp. the monitoring and reporting system – MOPs and the capacity of implementing agencies – e.g. Ministry of Works - MPWU and Ministry of Environment - MELAD);
  
- iv. Add load to the implementing agencies.

## 5. Moving Forward

---

- ✓ Awareness on climate change and its possible impacts should be ;
  - a continuous process ;
  - incorporated into the school curriculum;
  
- ✓ Participatory process for mainstreaming of climate change issues in national and sectoral development planning should also be maintained and improved where needed;
- ✓ Strengthen capacities of implementing agencies;
- ✓ Lessons learned from KAP II and other regional adaptation projects shall form the foundation of the future KAP III;
- ✓ What will happen after Phase III at the end of 2013?

*Kam Rabwa*  
(Thank You)

