

# At A Glance

2/20/03

## POVERTY and SOCIAL

### 2001

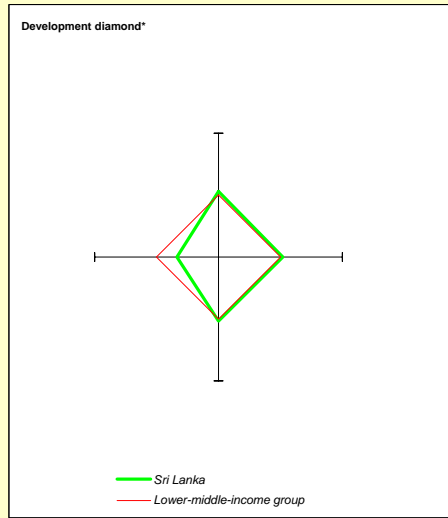
	Sri Lanka	South Asia	Lower-middle-income
Population, mid-year (millions)	19.6	1,380	2,164
GNI per capita (Atlas method, US\$)	830	450	1,240
GNI (Atlas method, US\$ billions)	16.3	616	2,677

### Average annual growth, 1995-01

	Sri Lanka	South Asia	Lower-middle-income
Population (%)	1.3	1.9	1.0
Labor force (%)	2.2	2.4	1.2

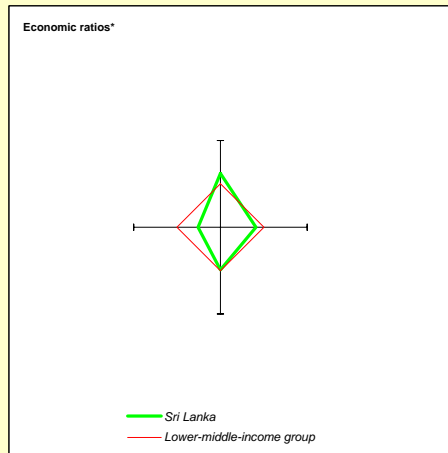
### Most recent estimate (latest year available, 1995-01)

	Sri Lanka	South Asia	Lower-middle-income
Poverty (% of population below national poverty line)	25	..	..
Urban population (% of total population)	23	28	46
Life expectancy at birth (years)	73	62	69
Infant mortality (per 1,000 live births)	15	73	33
Child malnutrition (% of children under 5)	33	49	11
Access to an improved water source (% of population)	83	87	80
Illiteracy (% of population age 15+)	8	44	15
Gross primary enrollment (% of school-age population)	111	101	107
Male	112	109	107
Female	110	93	107



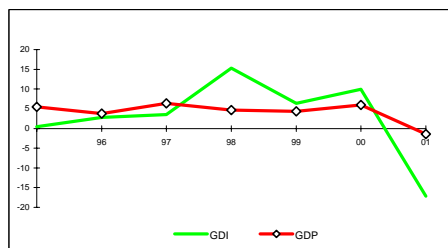
## KEY ECONOMIC RATIOS and LONG-TERM TRENDS

	1981	1991	2000	2001	
GDP (US\$ billions)	4.4	9.0	16.3	15.7	
Gross domestic investment/GDP	27.8	22.9	28.1	22.0	
Exports of goods and services/GDP	30.5	28.2	39.7	37.0	
Gross domestic savings/GDP	11.7	13.9	17.2	15.3	
Gross national savings/GDP	17.8	17.1	21.4	19.5	
Current account balance/GDP	-10.0	-5.8	-6.5	-1.7	
Interest payments/GDP	1.1	1.4	1.3	1.3	
Total debt/GDP	50.6	73.1	55.3	54.4	
Total debt service/exports	..	13.7	10.0	9.7	
Present value of debt/GDP	..	..	42.8	..	
Present value of debt/exports	..	..	89.6	..	
	<b>1981-91</b>	<b>1991-01</b>	<b>2000</b>	<b>2001</b>	
(average annual growth)					
GDP	3.9	4.9	6.0	-1.4	5.6
GDP per capita	2.4	3.6	4.3	-2.9	4.4
Exports of goods and services	4.9	6.9	18.0	-6.5	2.4



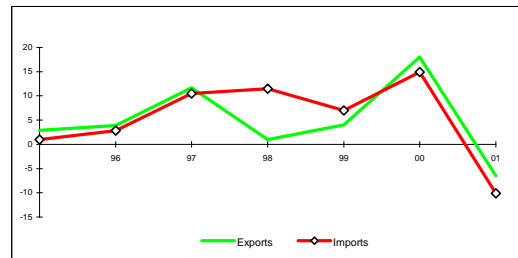
## STRUCTURE of the ECONOMY

(% of GDP)	1981	1991	2000	2001
Agriculture	27.7	26.8	19.5	19.5
Industry	28.0	25.6	27.5	26.7
Manufacturing	16.2	14.8	16.9	15.8
Services	44.3	47.7	53.0	53.8
Private consumption	80.9	76.3	72.4	74.6
General government consumption	7.4	9.8	10.4	10.1
Imports of goods and services	46.5	37.2	50.5	43.7



### (average annual growth)

	1981-91	1991-01	2000	2001
Agriculture	2.0	1.7	1.7	-2.9
Industry	4.9	6.5	7.5	-2.0
Manufacturing	6.5	7.4	9.2	-4.0
Services	4.4	5.6	6.8	-0.3
Private consumption	3.5	4.1	4.4	18.6
General government consumption	6.6	8.1	24.4	-18.8
Gross domestic investment	0.7	5.5	10.0	-17.1
Imports of goods and services	3.4	7.8	14.9	-10.1

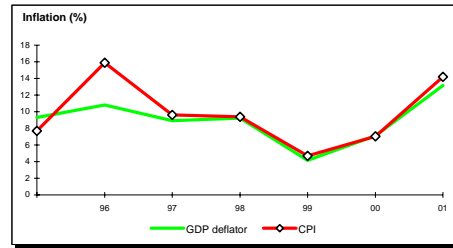


Note: 2001 data are preliminary estimates. Debt Data is from the World Bank Global Development Finance Database.

\* The diamonds show four key indicators in the country (in bold) compared with its income-group average. If data are missing, the diamond will be incomplete.

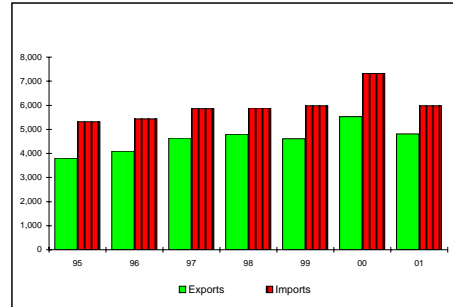
**PRICES and GOVERNMENT FINANCE**

	1981	1991	2000	2001
<b>Domestic prices</b>				
<i>(% change)</i>				
Consumer prices	..	12.2	6.2	14.2
Implicit GDP deflator	20.9	10.6	6.2	13.2
<b>Government finance</b>				
<i>(% of GDP, includes current grants)</i>				
Current revenue	..	22.6	17.2	16.9
Current budget balance	..	0.1	-3.0	-4.5
Overall surplus/deficit (including grants)	-12.4	-9.5	-9.5	-10.5



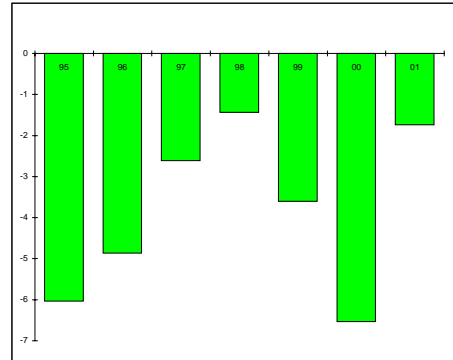
**TRADE**

	1981	1991	2000	2001
<i>(US\$ millions)</i>				
Total exports (fob)	..	1,987	5,522	4,817
Tea	..	432	700	690
Other agricultural goods	..	261	442	330
Manufactures	..	804	2,982	2,543
Total imports (cif)	1,694	2,894	7,320	5,974
Food	..	485	693	654
Fuel and energy	..	234	901	731
Capital goods	..	720	1,737	1,081
Export price index (1995=100)	..	..	151	140
Import price index (1995=100)	..	..	132	125
Terms of trade (1995=100)	..	..	115	112



**BALANCE of PAYMENTS**

	1981	1991	2000	2001
<i>(US\$ millions)</i>				
Exports of goods and services	..	2,534	6,475	6,183
Imports of goods and services	2,054	3,345	8,235	7,135
Resource balance	..	-811	-1,760	-952
Net income	-96	-180	-305	-280
Net current transfers	363	469	998	960
Current account balance	-442	-521	-1,066	-272
Financing items (net)	404	942	447	542
Changes in net reserves	38	-421	619	-270
<b>Memo:</b>				
Reserves including gold (US\$ millions)	..	704	915	1,187
Conversion rate (DEC, local/US\$)	19.2	41.4	77.0	89.4



**EXTERNAL DEBT and RESOURCE FLOWS**

	1981	1991	2000	2001
<i>(US\$ millions)</i>				
Total debt outstanding and disbursed	2,235	6,580	9,019	8,529
IBRD	29	76	13	8
IDA	126	1,058	1,610	1,570
Total debt service	212	416	777	716
IBRD	4	15	7	5
IDA	1	11	31	39
Composition of net resource flows				
Official grants	178	173	109	94
Official creditors	163	563	154	184
Private creditors	182	36	133	71
Foreign direct investment	49	63	176	172
Portfolio equity	0	32	-45	-11
World Bank program				
Commitments	159	242	18	37
Disbursements	28	187	47	39
Principal repayments	2	12	24	31
Net flows	26	174	23	8
Interest payments	3	14	14	13
Net transfers	23	161	10	-5

